



OFFICE OF THE
SECRETARY
2016 OCT 11 PM 4:09

MURIEL BOWSER

MAYOR

OCT 11 2016

The Honorable Phil Mendelson
Chairman
Council of the District of Columbia
John A. Wilson Building
1350 Pennsylvania Avenue, NW, Suite 504
Washington, DC 20004

Dear Chairman Mendelson:

In accordance with section 4 of the Office on Ex-Offender Affairs and Commission on Re-Entry and Ex-Offender Affairs Establishment Act of 2006, effective March, 2007 (D.C. Law 16-243; D.C. Official Code § 24-1303), which established the Commission on Re-Entry and Ex-Offender Affairs ("Commission"), re-designated by Mayor's Order 2012-31, dated February 12, 2012, as the Commission on Re-Entry and Returning Citizen Affairs, I am pleased to nominate the following person for appointment to the Commission on Re-Entry and Returning Citizen Affairs:

Mr. Alan Hanson
2351 24th Street, S.E.
Washington, DC 20020
(Ward 8)

for appointment as a member, replacing Peter Willner, for a term to end August 4, 2017.

Enclosed, you will find biographical information detailing the experience of the above-mentioned nominee, together with a proposed resolution to assist the Council during the confirmation process.

I would appreciate the Council's earliest consideration of this nomination for confirmation. Please do not hesitate to contact me, or Steven Walker, Director, Mayor's Office of Talent and Appointments, should the Council require additional information.

Sincerely,

A handwritten signature in black ink, appearing to read "Muriel Bowser", written over a large, stylized flourish.

Muriel Bowser


Chairman Phil Mendelson
at the request of the Mayor

A PROPOSED RESOLUTION

IN THE COUNCIL OF THE DISTRICT OF COLUMBIA

Chairman Phil Mendelson, at the request of the Mayor, introduced the following resolution
which was referred to the Committee on _____.

To confirm the appointment of Mr. Alan Hanson to the Commission on Re-Entry and Returning
Citizen Affairs.

RESOLVED, BY COUNCIL OF THE DISTRICT OF COLUMBIA, that this resolution
may be cited as the “Commission on Re-Entry and Returning Citizen Affairs Alan Hanson
Confirmation Resolution of 2016”.

Sec. 2. The Council of the District of Columbia confirms the appointment of:

Mr. Alan Hanson
2351 24th Street, S.E.
Washington, DC 20020
(Ward 8)

as a member of the Commission on Re-Entry and Returning Citizen Affairs, established by
section 4 of the Office on ex-Offender Affairs and Commission on Re-Entry and Ex-Offender
Affairs Establishment Act of 2006, effective March, 2007 (D.C. Law 16-243; D.C. Official Code
§ 24-1303), and re-designated by Mayor’s Order 2012-31, dated February 12, 2012, as the
Commission on Re-Entry and Returning Citizen Affairs, replacing Peter Willner, for a term to
end August 4, 2017.

Sec. 3. The Council of the District of Columbia shall transmit a copy of this resolution,
upon its adoption, to the nominee and to the Office of the Mayor.

Sec. 4. This resolution shall take effect immediately.

ALAN HANSON

EXPERIENCE

UNITED FOOD AND COMMERCIAL WORKERS LOCAL 400, LANDOVER, MD

2016 - present

As Mobilization Director I am responsible for increasing Local 400 member activism and leadership.

UNITED FOOD AND COMMERCIAL WORKERS, WASHINGTON, DC

2005 - 2015

As Assistant to the Organizing Director I supervised a team of 15-20 field organizers and led large scale organizing campaigns involving workers at Walmart, IKEA, Kroger and regional grocery chains. I led the first ever strike of Walmart workers in Los Angeles, CA.

CALIFORNIA NURSES ASSOCIATION, OAKLAND, CA

2002 - 2004

As Lead Organizer I led a team of 3-5 organizers in hospital organizing efforts in California and Arizona

UNITE! NEW YORK, NY

1999 - 2001

As an organizer I ran worker organizing campaigns in industrial laundries, textile mills, and distribution centers

UNITED PARCEL SERVICE, LOS ANGELES, CA

1994 - 1999

EDUCATION

UNIVERSITY OF CALIFORNIA, LOS ANGELES, ANTHROPOLOGY, B.A.

- Summa cum laude, departmental highest honors
- 3.819 overall GPA

UNIVERSITY OF MASSACHUSETTS, AMHERST, LABOR STUDIES, M.S.

- Degree anticipated July 2017

COMMUNICATION

Delivered talk on new models of worker organizing to Irish Congress of Trade Unions annual conference in Dublin, Ireland

Delivered UFCW report on IKEA to Union Network International executive board in Milan, Italy

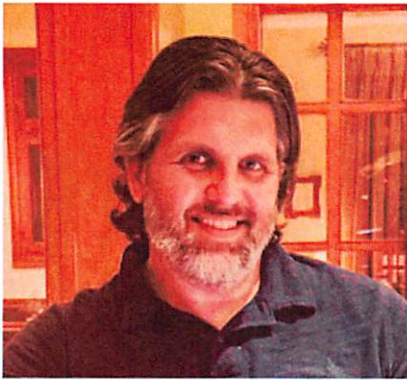
New organizer teaching fellow at AFL-CIO Organizing Institute

Delegate, Metropolitan Washington, D.C. Central Labor Council



Executive Office of the Mayor - Office of Talent and Appointments
John A. Wilson Building | 1350 Pennsylvania Avenue, Suite 600 | Washington, DC 20004

Alan Hanson



Alan Hanson is a Mobilization Director for United Food and Commercial Workers Local 400.

Mr. Hanson's passion to serve on the Commission for Re-Entry and Returning Citizen Affairs is driven by his own personal experience and the knowledge that most returning citizens do not have strong support networks or forgiving employers. As such, his experience as a returning citizen and an organizer makes him uniquely qualified.

A Ward 8 resident, Mr. Hanson graduated from UCLA with a degree in Anthropology and is scheduled to earn a Master of Science in Labor Studies from the University of Massachusetts in 2017.

GOVERNMENT OF THE DISTRICT OF COLUMBIA
Executive Office of Mayor Muriel Bowser



Office of the General Counsel to the Mayor

To: Lauren C. Vaughan, Steve Walker
From: Betsy Cavendish
Date: September 22, 2016
Subject: Legal sufficiency review of Resolutions appointing Al Hanson, Clarence Johnson, Corwin Knight, Esther Ford, Marcus Bullock, Paula Thompson, Stenise Sanders, Tanisha Murden, and Tony Lewis to the Commission on Re-Entry and Returning Citizen Affairs

This is to Certify that this office has reviewed the above-referenced Resolutions and found them to be legally unobjectionable. If you have any questions in this regard, please do not hesitate to call Alana Intrieri, Deputy General Counsel, Executive Office of the Mayor, at 202-724-1303, or me at 202-724-7681.

A handwritten signature in cursive script that reads 'Elizabeth A. Cavendish'.

Elizabeth Cavendish