

FOR OFFICE USE ONLY	

HOUSE FLOOR AMENDMENTS

2022 First Extraordinary Session

Amendments proposed by Representative Wilford Carter to Engrossed House Bill No. 3 by Representative Thomas

1 AMENDMENT NO. 1

2 On page 3, delete lines 23 through 28 and on page 4, delete lines 1 and 2 and insert the
3 following:

4 "(4) District 4 is composed of Avoyelles Parish; Precincts 4-1, 4-2, 4-4, 5-1,
5 5-2, 5-3, 5-4, 6-1, 6-2, 6-3, 6-4, and 7-5 of Bienville Parish; Precincts 1-3A, 2-1, 2-2,
6 2-4, 2-18B, 2-18C, 2-18D, 2-18E, 2-18F, 2-18G, 2-21A, 2-21B, 2-21C, 2-21D,
7 2-22A, 2-22B, 2-22C, 3-1, 3-2, 3-3, 3-4, 4-1A, 4-2, 4-3A, 4-3B, 4-3C, 4-3D, 4-4A,
8 4-7A, 4-7B, 4-8A, 4-8B, 4-8E, 4-8G, 4-9, 4-10, 4-11A, and 4-11B of Bossier Parish;
9 Precincts 9, 10, 11, 12, 13, 14, 16, 20, 21, 22, 48, 49, 56, 72, 75, 76, 77, 97, 101, 102,
10 104, 105, 107, 108, 109, 110, 112, 113, 115, 126, 127, 128, 129, 132, 133, 134,
11 136A, 136B, 137, 138, 139, 140, 142, 143, 144, 145, 146, 149, 151, 154, 155, 156,
12 157, 158, 161, 162, 163, and 165 of Caddo Parish; Caldwell Parish; Precincts 1-3,
13 1-4, 2-2, 3-1, 3-2, 3-3, 3-4, 4-1, 4-2, 5-1, 6-1, 6-2, 6-3, 9-1, 9-2, 9-3, and 9-4 of
14 Catahoula Parish; Precincts 2-1, 3-1, 3-2, 3-3, 3-4, 5-3, 5-5, and 5-6 of Concordia
15 Parish; Precincts 10, 11, 21, 28, 35, 46, 48, 49, and 51 of De Soto Parish; Franklin
16 Parish; Grant Parish; Precincts 6, 7, 8, 8A, 9, 10, 10A, 11, and 11A of Jackson
17 Parish; La Salle Parish; Precinct 3 of Madison Parish; Natchitoches Parish; Precincts
18 32, 33, 38, 39, 40, 41, 42, 43, 44, 44A, 45, 46, 48, 49, 51, 51A, 52, 52A, 53, 54, 55,
19 56, 56A, 57, and 58 of Ouachita Parish; Rapides Parish; Precincts 1-1, 1-2, 2-1, 2-3,
20 3-1, 3-2, and 3-3 of Red River Parish; Precincts 1, 2, 3, 4, 8, 23, 25, 26, 27, 28, and
21 30 of Richland Parish; Sabine Parish; Precincts 1-1, 1-1B, 1-2, 1-2A, 1-3, 1-3B,
22 1-3C, 1-3D, 1-4, 1-4A, 1-4B, 1-4C, 1-4D, 1-5, 1-5A, 1-6, 1-6A, 1-6B, 1-7, 1-7A,
23 1-7B, 1-8, 1-8A, 1-8C, 1-8E, 1-8F, 1-9, 2-1, 2-1A, 2-2, 2-2A, 2-3, 2-3A, 2-4, 2-4E,
24 3-1, 3-4, 4-1, 4-2, 4-3, 4-3C, 4-3E, 4-3F, 4-3G, 4-3J, 4-3K, 4-3L, 4-3M, 4-3N, 5-1,
25 5-1A, 5-2, 5-2A, 6-1, 6-2, 6-3, 6-4, 7-3, 7-4A, 8-1, 8-2, and 8-3 of Vernon Parish;
26 and Winn Parish.

27 (5) District 5 is composed of Precincts 1-1, 1-2, 1-3, 1-4, 2-1, 2-2, 2-3, 2-4,
28 2-5, 2-6, 3-1, 3-2, 3-3, 3-4, 3-5, 3-6, 3-7, 7-1, 7-2, 7-3, and 7-4 of Bienville Parish;
29 Precincts 1-1, 1-2, 1-3, 1-3B, 1-4, 1-5, 2-3, 2-3A, 2-5A, 2-6, 2-7, 2-8, 2-9, 2-10,
30 2-11, 2-11A, 2-12A, 2-12B, 2-12C, 2-13, 2-14, 2-15, 2-16, 2-17A, 2-17B, 2-19, 2-20,
31 2-23, 4-4B, 4-5A, 4-6A, 4-6B, 4-8C, 4-8D, and 4-11C of Bossier Parish; Precincts
32 1, 2, 3, 4, 5A, 5B, 6, 7, 8, 15, 17, 23, 24, 25, 26, 27, 28, 29, 30, 31, 32, 34, 35, 36, 37,
33 38, 39, 40, 41, 43, 44, 45, 46, 47, 50, 51, 52, 53, 54, 55, 57, 58, 59, 60, 61, 62, 63, 64,
34 65, 66, 67, 68, 69, 70, 71, 73, 74, 78, 79, 80, 81, 82, 83, 84, 85, 86, 87, 88, 89, 90, 91,
35 92, 93, 94, 95, 98, 99, 100, 103, 106, 111, 114, 122, 123, 125, 135, 160, and 166 of
36 Caddo Parish; Precincts 1-1, 1-2, 2-1, 6-5, 7-1, 7-3, 7-5, and 8-1 of Catahoula Parish;
37 Claiborne Parish; Precincts 1-1, 1-2, 1-3, 1-4, 4-1, 4-2, 4-3, 4-4, 5-1, 5-2, 5-2B, and
38 5-4 of Concordia Parish; Precincts 1, 4, 5, 6, 9, 16, 22, 23, 26, 30, 31, 32, 33, 34, 37,
39 38, 42, 44, 53, 55, 56, 59, 60, and 63 of De Soto Parish; East Carroll Parish;
40 Precincts 1, 2, 3, 4, 5, 5A, 6A, 13, 13A, 15, 16, 17, 17A, 18, 19A, 19AI, 20, 20A, 22,
41 25, 25A, and 25B of Jackson Parish; Lincoln Parish; Precincts 1, 2, 4, 5, 6, 7, 8, 9,
42 10, 11, 12, 13, 14, 15, 16, 17, 18, 19, 20, 21, 22, 23, 24, 25, and 26 of Madison
43 Parish; Morehouse Parish; Precincts 1, 1A, 2, 3, 4, 5, 6, 7, 8, 9, 9A, 10, 11, 12, 13,
44 14, 15, 16, 17, 18, 19, 20, 21, 22, 23, 24, 25, 26, 27, 27A, 28, 29, 30, 31, 34, 35, 36,
45 37, 47, 50, 59, 60, 61, 62, 63, 64, 65, 65A, 66, 67, 68, 69, 70, 71, 72, 73, 74, 75, 76,

1 77, 78, and 79 of Ouachita Parish; Precincts 4-1, 4-2, 4-3, 4-5, 5-1, 5-2, 6-1, 6-2, 7-1,
2 7-2, and 7-3 of Red River Parish; Precincts 10, 11, 12, 12A, 13, 17, 18, 31, 32, 33,
3 34, and 35 of Richland Parish; Tensas Parish; Union Parish; Webster Parish; and
4 West Carroll Parish."

5 AMENDMENT NO. 2

6 On page 4, delete lines 19 through 27, and insert the following:

7 "(7) District 7 is composed of Acadia Parish; Allen Parish; Beauregard
8 Parish; Calcasieu Parish; Cameron Parish; Jefferson Davis Parish; Precincts 1, 2, 3,
9 6, 8, 12, 26, 27, 28, 29, 30, 31, 32, 33, 34, 35, 36, 37, 38, 39, 40, 41, 42, 43, 44, 45,
10 46, 47, 48, 49, 65, 66, 67, 69, 70, 71, 72, 73, 74, 75, 76, 77, 78, 79, 80, 81, 82, 83, 84,
11 85, 86, 87, 88, 89, 90, 91, 92, 93, 94, 95, 96, 97, 98, 99, 100, 101, 102, 103, 104, 105,
12 106, 107, 108, 109, 110, 111, 114, 115, 116, 117, 118, 119, 120, 121, 122, 123, 124,
13 125, 126, 127, and 128 of Lafayette Parish; Precincts 41, 42, and 43 of St. Landry
14 Parish; Precincts 1, 2, 5A, 6, 7A-1, 7B, 8B, 9, 10A, 11, 12, 14, 18, 19A, 19B, 20A-2,
15 20B-1, 24, 25, 25A, and 26 of Vermilion Parish; and Precincts 3-2, 3-3, 3-5, 4-3A,
16 7-1, 7-2, 7-2A, 7-4, 7-5, 7-5A, and 7-5C of Vernon Parish."

Differing Assignments



DB: LA 2020 12 - CENSUS
Plan Type: BESE

Plan: HFAHB3 474 54

Page: 1 of 13

	HFAHB3 474 54	HB3 Engrossed (Thomas) 221ES-14
Avoyelles		
1-1	4	5
1-2	4	5
1-3	4	5
2-1	4	5
2-2	4	5
2-2A	4	5
2-2B	4	5
2-2C	4	5
2-2D	4	5
2-2F	4	5
2-3A	4	5
2-4	4	5
2-4A	4	5
2-5	4	5
2-5E	4	5
2-7	4	5
2-8	4	5
3-1	4	5
3-1B	4	5
3-3	4	5
4-1	4	5
4-2	4	5
4-2A	4	5
5-1	4	5
5-1A	4	5
6-1A	4	5
6-2	4	5
6-2A	4	5
7-1	4	5
7-3	4	5
7-3B	4	5
8-1	4	5
8-2A	4	5
8-2B	4	5
8-3	4	5
8-3A	4	5
9-1A	4	5
9-2	4	5
9-2A	4	5
9-3	4	5
9-4	4	5
9-4B	4	5
9-5B	4	5
10-2	4	5

Differing Assignments



DB: LA 2020 12 - CENSUS
Plan Type: BESE

Plan: HFAHB3 474 54

	HFAHB3 474 54	HB3 Engrossed (Thomas) 221ES-14
10-2A	4	5
10-3A	4	5
10-4	4	5
11-1	4	5
11-2A	4	5
Bienville		
1-1	5	4
1-2	5	4
1-3	5	4
1-4	5	4
2-1	5	4
2-2	5	4
2-3	5	4
2-4	5	4
2-5	5	4
2-6	5	4
3-1	5	4
3-2	5	4
3-3	5	4
3-4	5	4
3-5	5	4
3-6	5	4
3-7	5	4
7-1	5	4
7-2	5	4
7-3	5	4
7-4	5	4
Bossier		
1-1	5	4
1-2	5	4
1-3	5	4
1-3B	5	4
1-4	5	4
1-5	5	4
2-3	5	4
2-3A	5	4
2-5A	5	4
2-6	5	4
2-7	5	4
2-8	5	4
2-9	5	4
2-10	5	4
2-11	5	4
2-11A	5	4
2-12A	5	4

Differing Assignments



DB: LA 2020 12 - CENSUS
Plan Type: BESE

Plan: HFAHB3 474 54

	HFAHB3 474 54	HB3 Engrossed (Thomas) 221ES-14
2-12B	5	4
2-12C	5	4
2-13	5	4
2-14	5	4
2-15	5	4
2-16	5	4
2-17A	5	4
2-17B	5	4
2-19	5	4
2-20	5	4
2-23	5	4
4-4B	5	4
4-5A	5	4
4-6A	5	4
4-6B	5	4
4-8C	5	4
4-8D	5	4
4-11C	5	4
Caddo		
1	5	4
2	5	4
3	5	4
4	5	4
5A	5	4
5B	5	4
6	5	4
7	5	4
8	5	4
15	5	4
17	5	4
23	5	4
24	5	4
25	5	4
26	5	4
27	5	4
28	5	4
29	5	4
30	5	4
31	5	4
32	5	4
34	5	4
35	5	4
36	5	4
37	5	4
38	5	4

Differing Assignments



DB: LA 2020 12 - CENSUS
Plan Type: BESE

Plan: HFAHB3 474 54

	HFAHB3 474 54	HB3 Engrossed (Thomas) 221ES-14
39	5	4
40	5	4
41	5	4
43	5	4
44	5	4
45	5	4
46	5	4
47	5	4
50	5	4
51	5	4
52	5	4
53	5	4
54	5	4
55	5	4
57	5	4
58	5	4
59	5	4
60	5	4
61	5	4
62	5	4
63	5	4
64	5	4
65	5	4
66	5	4
67	5	4
68	5	4
69	5	4
70	5	4
71	5	4
73	5	4
74	5	4
78	5	4
79	5	4
80	5	4
81	5	4
82	5	4
83	5	4
84	5	4
85	5	4
86	5	4
87	5	4
88	5	4
89	5	4
90	5	4
91	5	4

Differing Assignments



DB: LA 2020 12 - CENSUS
Plan Type: BESE

Plan: HFAHB3 474 54

	HFAHB3 474 54	HB3 Engrossed (Thomas) 221ES-14
92	5	4
93	5	4
94	5	4
95	5	4
98	5	4
99	5	4
100	5	4
103	5	4
106	5	4
111	5	4
114	5	4
122	5	4
123	5	4
125	5	4
135	5	4
160	5	4
166	5	4
Caldwell		
1-1	4	5
1-2	4	5
2-1	4	5
2-2	4	5
3-1	4	5
3-2	4	5
3-3	4	5
4-1	4	5
4-1A	4	5
4-2	4	5
5-1	4	5
5-2	4	5
5-3	4	5
6-1	4	5
6-2	4	5
6-3	4	5
7-1	4	5
7-2	4	5
7-3	4	5
Catahoula		
1-3	4	5
1-4	4	5
2-2	4	5
3-1	4	5
3-2	4	5
3-3	4	5
3-4	4	5

Differing Assignments



DB: LA 2020 12 - CENSUS
Plan Type: BESE

Plan: HFAHB3 474 54

	HFAHB3 474 54	HB3 Engrossed (Thomas) 221ES-14
4-1	4	5
4-2	4	5
5-1	4	5
6-1	4	5
6-2	4	5
6-3	4	5
9-1	4	5
9-2	4	5
9-3	4	5
9-4	4	5
Concordia		
2-1	4	5
3-1	4	5
3-2	4	5
3-3	4	5
3-4	4	5
5-3	4	5
5-5	4	5
5-6	4	5
De Soto		
1	5	4
4	5	4
5	5	4
6	5	4
9	5	4
16	5	4
22	5	4
23	5	4
26	5	4
30	5	4
31	5	4
32	5	4
33	5	4
34	5	4
37	5	4
38	5	4
42	5	4
44	5	4
53	5	4
55	5	4
56	5	4
59	5	4
60	5	4
63	5	4
Franklin		
1	4	5

Differing Assignments



DB: LA 2020 12 - CENSUS
Plan Type: BESE

Plan: HFAHB3 474 54

	HFAHB3 474 54	HB3 Engrossed (Thomas) 221ES-14
2	4	5
3	4	5
4	4	5
4A	4	5
4B	4	5
6	4	5
12	4	5
13	4	5
13A	4	5
14	4	5
16	4	5
18	4	5
19	4	5
20	4	5
21	4	5
22	4	5
24	4	5
26	4	5
27	4	5
30	4	5
31	4	5
32	4	5
33	4	5
Grant		
1-1	4	5
1-2	4	5
1-3	4	5
2-1	4	5
2-2	4	5
2-3	4	5
2-5	4	5
3-1	4	5
3-2	4	5
3-3	4	5
4-1	4	5
4-2	4	5
4-3	4	5
5-1	4	5
5-2	4	5
5-3	4	5
6-1	4	5
6-2	4	5
6-3	4	5
6-4	4	5
7-1	4	5

Differing Assignments



DB: LA 2020 12 - CENSUS
Plan Type: BESE

Plan: HFAHB3 474 54

	HFAHB3 474 54	HB3 Engrossed (Thomas) 221ES-14
7-2	4	5
7-3	4	5
7-4	4	5
8-1	4	5
8-2	4	5
8-3	4	5
8-4	4	5
Jackson		
6	4	5
7	4	5
8	4	5
8A	4	5
9	4	5
10	4	5
10A	4	5
11	4	5
11A	4	5
La Salle		
1-1	4	5
1-2	4	5
1-3	4	5
2-1	4	5
3-1	4	5
3-2	4	5
4-2	4	5
4-3	4	5
5-1	4	5
6-1	4	5
6-2	4	5
7-1	4	5
7-2	4	5
8-2	4	5
8-3	4	5
8-5	4	5
8-6	4	5
8-7	4	5
9-1	4	5
9-2	4	5
9-3	4	5
9-4	4	5
9-5	4	5
10-1	4	5
Madison		
3	4	5
Ouachita		
32	4	5

Differing Assignments



DB: LA 2020 12 - CENSUS
Plan Type: BESE

Plan: HFAHB3 474 54

	HFAHB3 474 54	HB3 Engrossed (Thomas) 221ES-14
33	4	5
38	4	5
39	4	5
40	4	5
41	4	5
42	4	5
43	4	5
44	4	5
44A	4	5
45	4	5
46	4	5
48	4	5
49	4	5
51	4	5
51A	4	5
52	4	5
52A	4	5
53	4	5
54	4	5
55	4	5
56	4	5
56A	4	5
57	4	5
58	4	5
Rapides		
C1	4	5
C2	4	5
C3	4	5
C4	4	5
C5	4	5
C6	4	5
C7	4	5
C8	4	5
C9	4	5
C10	4	5
C11-A	4	5
C11-B	4	5
C13	4	5
C14	4	5
C15	4	5
C17	4	5
C18	4	5
C19	4	5
C20	4	5
C21	4	5

Differing Assignments



DB: LA 2020 12 - CENSUS
Plan Type: BESE

Plan: HFAHB3 474 54

	HFAHB3 474 54	HB3 Engrossed (Thomas) 221ES-14
C22	4	5
C23	4	5
C24	4	5
C25	4	5
C26	4	5
C27	4	5
C28	4	5
C30	4	5
C31	4	5
C32	4	5
C33	4	5
C34	4	5
C35	4	5
C36	4	5
C37-A	4	5
C37-B	4	5
C38-A	4	5
C38-B	4	5
C39	4	5
C40	4	5
C41	4	5
C42	4	5
N1	4	5
N2	4	5
N3	4	5
N4	4	5
N5	4	5
N6	4	5
N7	4	5
N8	4	5
N9	4	5
N10	4	5
N11	4	5
N12	4	5
N13-A	4	5
N13-B	4	5
N14-A	4	5
N14-B	4	5
N15	4	5
N16	4	5
N17	4	5
N18-A	4	5
N18-B	4	5
N19	4	5
N20	4	5

Differing Assignments



DB: LA 2020 12 - CENSUS
Plan Type: BESE

Plan: HFAHB3 474 54

	HFAHB3 474 54	HB3 Engrossed (Thomas) 221ES-14
N21	4	5
N22	4	5
N23	4	5
N24	4	5
N25	4	5
N26	4	5
N27	4	5
N28	4	5
N29	4	5
S1	4	5
S2	4	5
S4	4	5
S5	4	5
S6A	4	5
S6B	4	5
S7	4	5
S8	4	5
S9	4	5
S10	4	5
S11	4	5
S13	4	5
S14	4	5
S15	4	5
S16	4	5
S17	4	5
S18	4	5
S19	4	5
S20	4	5
S21	4	5
S22	4	5
S23	4	5
S24	4	5
S25	4	5
S26	4	5
S27	4	5
S28	4	5
S29	4	5
Red River		
4-1	5	4
4-2	5	4
4-3	5	4
4-5	5	4
5-1	5	4
5-2	5	4
6-1	5	4

Differing Assignments



DB: LA 2020 12 - CENSUS
Plan Type: BESE

Plan: HFAHB3 474 54

	HFAHB3 474 54	HB3 Engrossed (Thomas) 221ES-14
6-2	5	4
7-1	5	4
7-2	5	4
7-3	5	4
Richland		
1	4	5
2	4	5
3	4	5
4	4	5
8	4	5
23	4	5
25	4	5
26	4	5
27	4	5
28	4	5
30	4	5
Vernon		
3-2	7	4
3-3	7	4
3-5	7	4
4-3A	7	4
7-1	7	4
7-2	7	4
7-2A	7	4
7-4	7	4
7-5	7	4
7-5A	7	4
7-5C	7	4
Webster		
1	5	4
2	5	4
2B	5	4
3	5	4
4	5	4
5	5	4
6	5	4
8	5	4
9	5	4
10	5	4
11	5	4
12	5	4
13	5	4
14	5	4
15	5	4
16	5	4
17	5	4

Differing Assignments



DB: LA 2020 12 - CENSUS
Plan Type: BESE

Plan: HFAHB3 474 54

	HFAHB3 474 54	HB3 Engrossed (Thomas) 221ES-14
17A	5	4
18	5	4
22	5	4
24	5	4
25	5	4
25A	5	4
26	5	4
27	5	4
28	5	4
29	5	4
31	5	4
32	5	4
33	5	4
34	5	4
35	5	4
36	5	4
38	5	4
39	5	4
40	5	4
41	5	4
42	5	4
43	5	4

Plan Statistics

Plan: HFAHB3 474 54

<u>Districts:</u>	<u># of Members</u>	<u>Actual Population</u>	<u>Ideal Population</u>	<u>Absolute Deviation</u>	<u>Relative Deviation</u>
District 1	1	582,430	582,219	211	0.036%
District 2	1	567,081	582,219	-15,138	-2.600%
District 3	1	574,499	582,219	-7,720	-1.326%
District 4	1	608,897	582,219	26,678	4.582%
District 5	1	556,362	582,219	-25,857	-4.441%
District 6	1	597,477	582,219	15,258	2.621%
District 7	1	596,868	582,219	14,649	2.516%
District 8	1	574,143	582,219	-8,076	-1.387%

Grand Total:	8	4,657,757	4,657,752
--------------	---	-----------	-----------

Ideal Population Per Member:	582219			
Number of Districts for Plan Type:	8			
Range of District Populations:	556,362	to	608,897	
Absolute Mean Deviation:	6,567			
Absolute Range:	-25,857	to	26,678	
Absolute Overall Range:	52,535			
Relative Mean Deviation:	2.44%			
Relative Range:	-4.44%	to	4.58%	
Relative Overall Range:	9.02%			

<i>Ideal - Actual:</i>	-5
<i>Remainder:</i>	5
<i>Unassigned Population:</i>	0

District Population

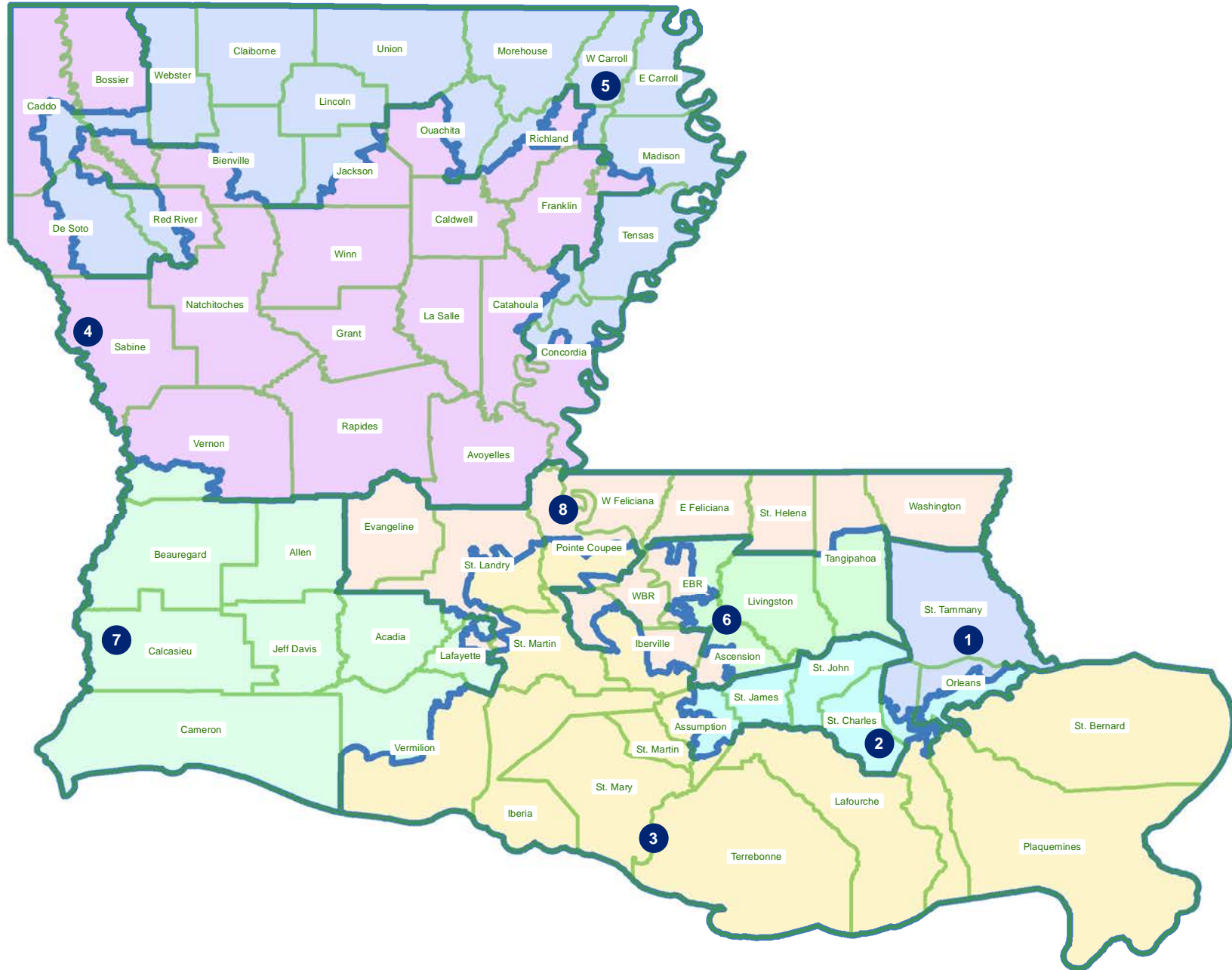
	Total Population	Total White	Total Black	Total Asian	Total Other	Total Hispanic	VAP Total	VAP White	VAP Black	VAP Asian	VAP Other	VAP Hispanic Total	Reg Total Dec 2021	Reg White Dec 2021	Reg Black Dec 2021	Reg Other Dec 2021
District 4																
Avoyelles	39,693	25,625	11,678	434	1,189	1,485	30,578	20,269	8,311	379	1,049	1,257	23,426	16,534	6,294	598
Bienville	6,053	4,279	1,527	36	67	91	4,547	3,288	1,083	18	48	59	3,884	2,902	937	45
Bossier	73,034	53,864	12,216	1,896	3,125	3,806	54,740	41,079	8,886	1,275	2,070	2,381	44,085	35,291	6,506	2,288
Caddo	88,515	65,164	15,302	2,731	3,201	3,593	69,627	52,633	11,123	1,973	2,265	2,397	59,189	47,121	8,813	3,255
Caldwell	9,645	7,646	1,632	51	166	221	7,478	5,969	1,224	46	123	163	6,031	5,124	818	89
Catahoula	5,964	4,841	482	36	521	557	4,759	3,785	379	24	505	525	4,270	3,874	357	39
Concordia	8,255	6,126	1,781	53	164	214	6,146	4,600	1,324	36	94	123	5,786	4,455	1,220	111
De Soto	6,410	4,695	1,359	7	180	168	5,005	3,744	1,023	5	108	99	4,748	3,642	985	121
Franklin	19,774	12,492	6,802	70	205	276	15,028	9,901	4,779	44	151	183	13,159	9,015	4,034	110
Grant	22,169	17,709	3,335	133	348	1,333	17,527	13,964	2,717	97	242	1,179	12,688	11,174	1,176	338
Jackson	4,589	3,936	470	21	66	72	3,671	3,189	346	10	47	47	3,158	2,795	290	73
La Salle	14,791	11,348	1,422	283	1,366	1,402	11,563	8,636	1,065	264	1,327	1,325	8,792	7,978	637	177
Madison	332	302	26	0	0	0	276	257	17	0	0	0	237	233	1	3
Natchitoches	37,515	19,361	15,725	255	1,313	1,490	29,349	16,010	11,415	198	1,043	1,140	23,107	12,850	9,224	1,033
Ouachita	55,069	46,748	4,137	782	1,920	1,922	41,543	35,798	2,716	536	1,342	1,238	35,426	32,375	1,900	1,151
Rapides	130,023	77,510	42,592	2,428	4,391	5,090	98,792	61,373	30,205	1,786	3,094	3,442	80,176	52,832	23,775	3,569
Red River	3,529	2,913	439	10	58	86	2,696	2,294	286	2	48	49	2,469	2,184	251	34
Richland	6,573	5,407	955	24	91	117	4,990	4,168	667	22	58	77	4,620	3,893	648	79
Sabine	22,155	15,036	3,861	94	441	710	17,064	12,054	2,655	66	319	502	14,547	11,023	2,184	1,340
Vernon	41,054	28,810	6,894	1,303	2,709	3,705	30,649	22,099	4,669	985	1,922	2,461	19,496	15,215	2,708	1,573
Winn	13,755	8,594	3,727	210	961	1,023	10,906	6,932	2,695	170	902	941	8,406	5,988	2,292	126
District 4	608,897	422,406	136,362	10,857	22,482	27,361	466,934	332,042	97,585	7,936	16,757	19,588	377,700	286,498	75,050	16,152
	100.000%	69.372%	22.395%	1.783%	3.692%	4.494%	100.000%	71.111%	20.899%	1.700%	3.589%	4.195%	80.889%	75.853%	19.870%	4.276%
District 5																
Bienville	6,928	2,671	4,073	21	100	120	5,526	2,198	3,201	12	63	82	4,963	1,941	2,980	42
Bossier	55,712	27,188	20,335	1,596	5,253	6,431	41,136	21,852	13,554	1,173	3,510	4,238	25,658	15,570	8,332	1,756
Caddo	149,333	38,293	104,002	1,303	4,012	4,788	112,780	32,426	75,236	1,035	2,758	3,221	92,107	25,992	62,436	3,679
Catahoula	2,942	935	1,913	10	49	57	2,192	772	1,357	9	33	33	2,197	765	1,413	19
Claiborne	14,170	7,263	6,360	88	274	479	11,507	6,258	4,824	55	230	403	8,598	4,632	3,820	146
Concordia	10,432	4,149	5,944	69	168	245	8,071	3,508	4,289	64	135	187	6,178	2,767	3,320	91
De Soto	20,402	10,589	8,614	110	518	594	15,435	8,165	6,402	81	355	396	13,965	7,688	5,825	452
East Carroll	7,459	2,054	5,272	29	61	115	5,901	1,773	4,043	19	39	80	4,709	1,306	3,359	44
Jackson	10,442	6,031	3,696	154	402	396	8,112	4,778	2,779	130	330	325	6,291	3,852	2,320	119
Lincoln	48,396	26,034	19,364	892	1,444	1,754	38,655	21,306	15,119	744	960	1,187	25,649	15,672	9,016	961
Madison	9,685	3,173	6,337	20	100	204	7,159	2,649	4,374	9	81	149	7,041	2,261	4,673	107

District Population

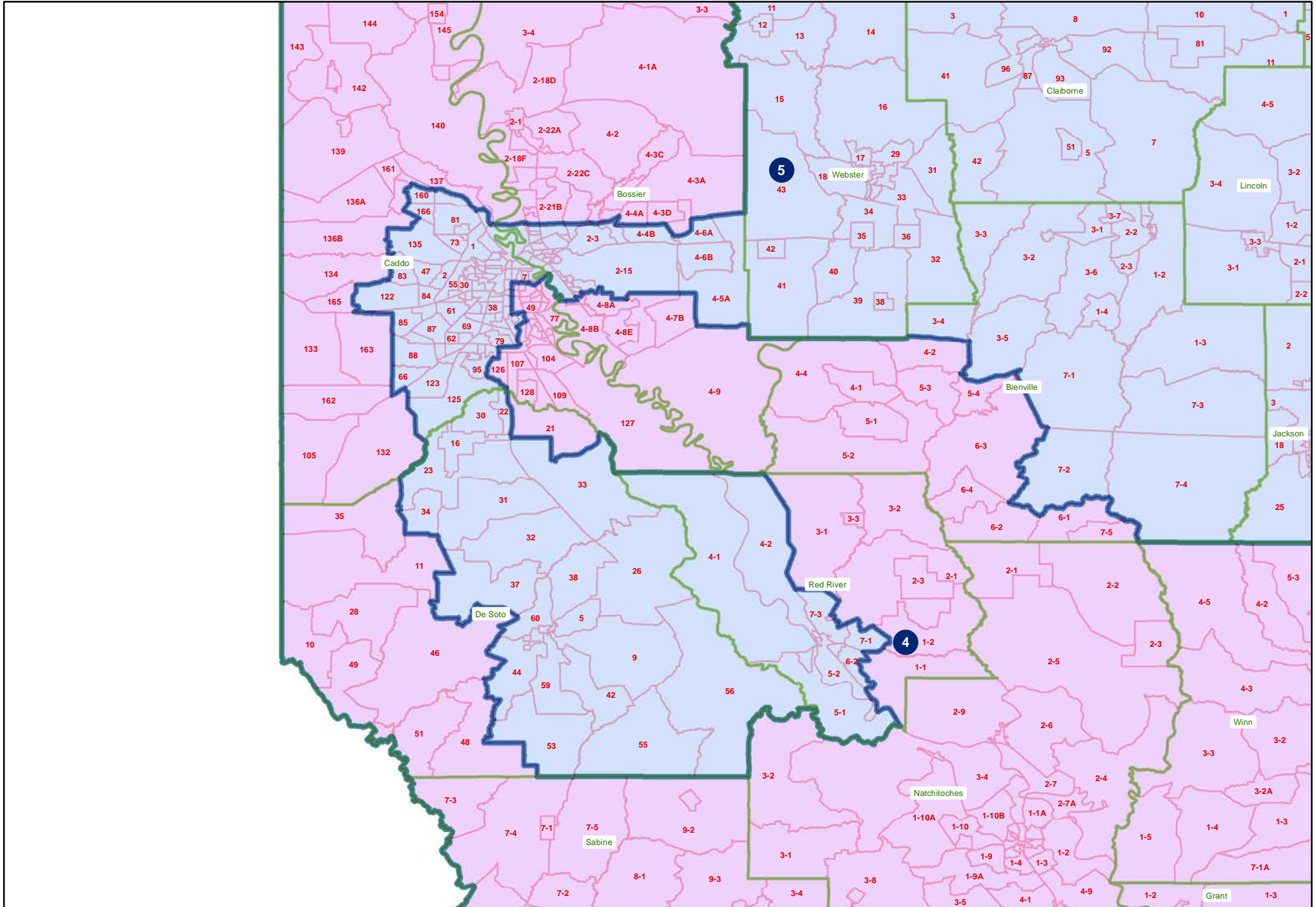
	Total Population	Total White	Total Black	Total Asian	Total Other	Total Hispanic	VAP Total	VAP White	VAP Black	VAP Asian	VAP Other	VAP Hispanic Total	Reg Total Dec 2021	Reg White Dec 2021	Reg Black Dec 2021	Reg Other Dec 2021
District 5																
Morehouse	25,629	12,281	12,484	160	334	381	20,062	10,095	9,300	117	271	292	16,922	8,505	8,131	286
Ouachita	105,299	41,797	57,080	2,006	3,237	3,736	78,657	34,176	39,574	1,582	2,417	2,708	64,326	28,140	33,758	2,428
Red River	4,091	1,282	2,667	15	65	102	3,018	1,044	1,878	1	45	64	3,162	946	2,167	49
Richland	13,470	6,378	6,648	59	223	283	10,393	5,170	4,879	44	172	216	9,042	4,577	4,313	152
Tensas	4,147	1,744	2,312	23	42	67	3,235	1,446	1,728	12	26	46	3,455	1,503	1,917	35
Union	21,107	14,460	5,224	62	1,023	1,135	16,632	11,807	3,861	39	671	709	15,221	11,066	3,692	463
Webster	36,967	22,735	12,679	208	658	688	28,753	18,144	9,464	154	433	434	22,737	14,938	7,339	460
West Carroll	9,751	7,894	1,425	27	225	325	7,532	6,223	1,010	20	143	192	7,038	5,913	1,040	85
District 5	556,362	236,951	286,429	6,852	18,188	21,900	424,756	193,790	206,872	5,300	12,672	14,962	339,259	158,034	169,851	11,374
	100.000%	42.589%	51.482%	1.232%	3.269%	3.936%	100.000%	45.624%	48.704%	1.248%	2.983%	3.522%	79.872%	46.582%	50.065%	3.353%
District 7																
Acadia	57,576	44,480	10,864	238	1,421	1,641	42,943	34,071	7,383	173	916	1,026	37,678	30,555	6,407	716
Allen	22,750	16,327	4,490	246	740	1,893	17,510	12,751	3,275	182	656	1,755	12,201	9,478	2,217	506
Beauregard	36,549	29,529	4,649	402	917	1,271	27,489	22,304	3,495	269	648	828	22,294	18,771	2,369	1,154
Calcasieu	216,785	139,772	59,386	4,702	9,389	11,384	163,166	108,789	41,898	3,359	6,516	7,570	120,511	85,659	29,513	5,339
Cameron	5,617	5,232	125	30	155	197	4,358	4,100	79	23	109	130	4,789	4,610	88	91
Jefferson Davis	32,250	25,066	5,837	183	692	734	24,039	19,121	4,006	111	476	489	20,013	16,350	3,202	461
Lafayette	188,892	137,649	31,542	6,037	10,888	12,814	144,039	108,453	21,545	4,363	7,576	8,830	120,727	98,255	15,500	6,972
St. Landry	3,858	3,131	464	18	184	245	2,825	2,328	339	11	100	122	2,184	1,860	250	74
Vermilion	24,895	21,806	1,839	316	694	751	18,593	16,499	1,222	212	466	482	16,296	14,887	1,002	407
Vernon	7,696	6,277	717	139	301	470	5,612	4,666	464	89	207	279	4,564	3,967	303	294
District 7	596,868	429,269	119,913	12,311	25,381	31,400	450,574	333,082	83,706	8,792	17,670	21,511	361,257	284,392	60,851	16,014
	100.000%	71.920%	20.090%	2.063%	4.252%	5.261%	100.000%	73.924%	18.578%	1.951%	3.922%	4.774%	80.177%	78.723%	16.844%	4.433%
Grand Total	1,762,127	1,088,626	542,704	30,020	66,051	80,661	1,342,264	858,914	388,163	22,028	47,099	56,061	1,078,216	728,924	305,752	43,540
	100.000%	61.779%	30.798%	1.704%	3.748%	4.577%	100.000%	63.990%	28.919%	1.641%	3.509%	4.177%	80.328%	67.605%	28.357%	4.038%

HFAHB3 474 54

Statewide

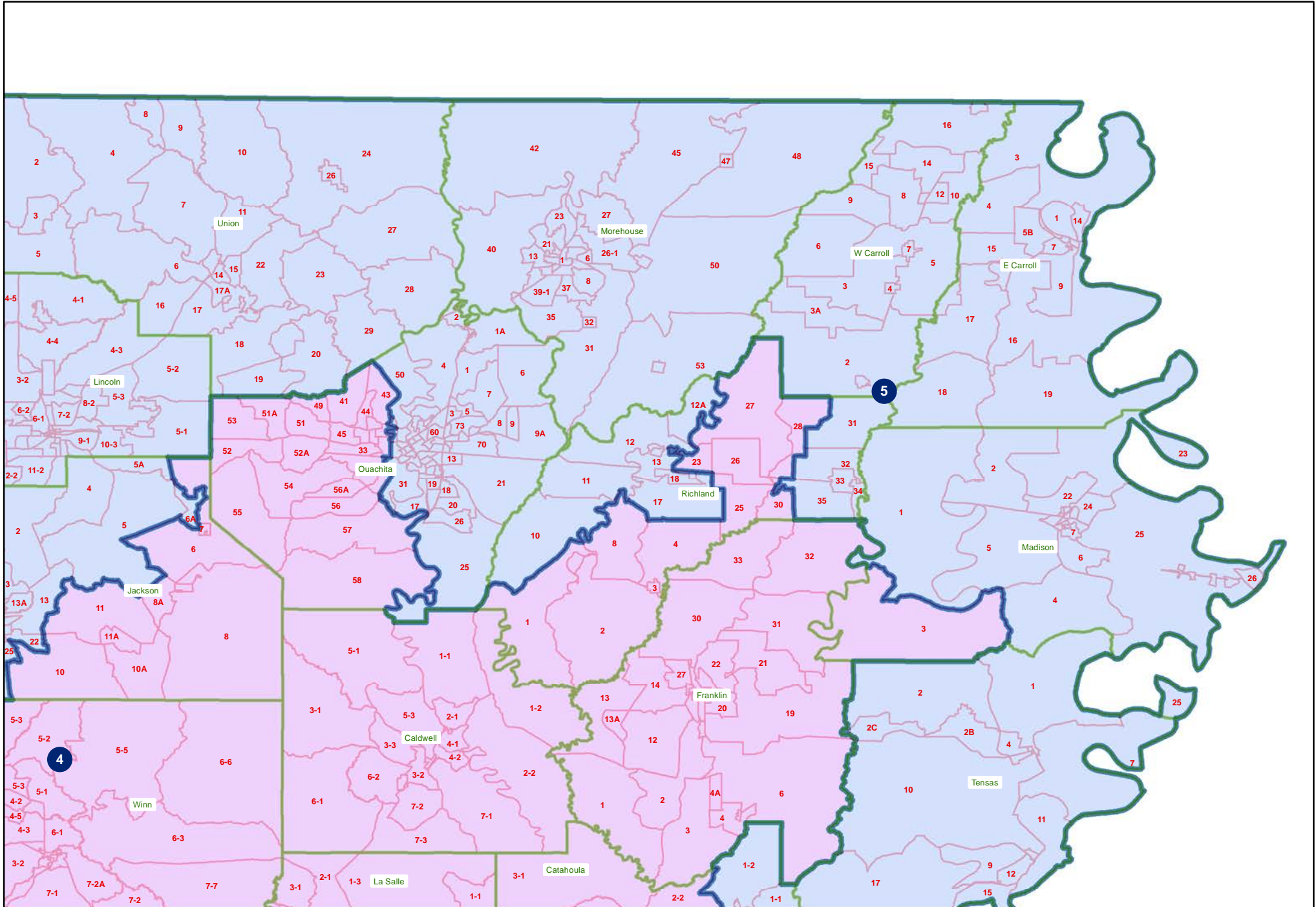


HFAHB3 474 54
Northwest



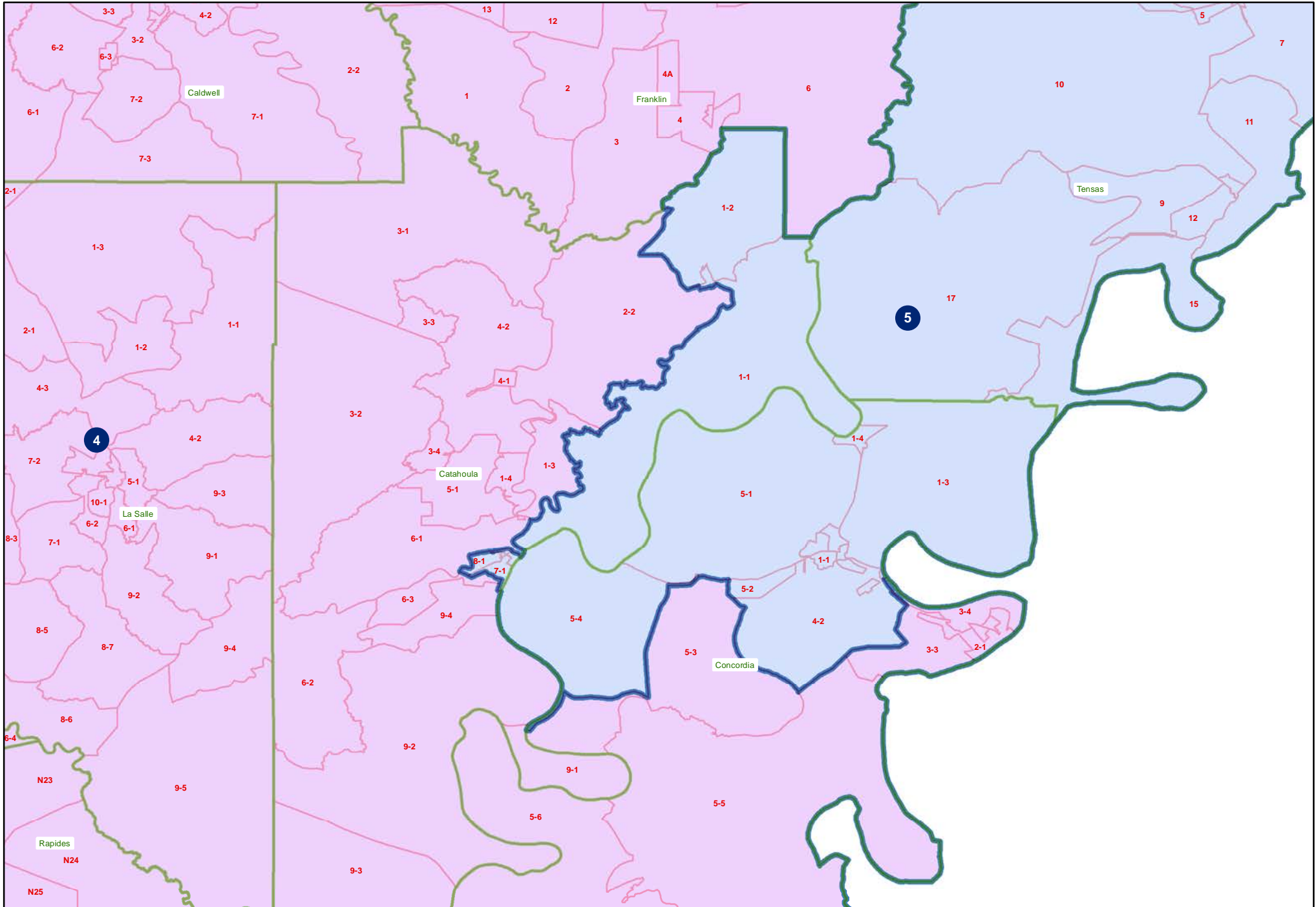
HFAHB3 474 54

Northeast



HFAHB3 474 54

Concordia and Catahoula Parishes



HFAHB3 474 54

Vernon Parish

