

2022 First Extraordinary Session

HOUSE BILL NO. 19

BY REPRESENTATIVE GADBERRY

REAPPORTIONMENT/CONGRESS: Provides relative to the districts for members of the United States Congress (Item #3)

1 AN ACT

2 To enact R.S. 18:1276 and to repeal R.S. 18:1276.1, relative to congressional districts; to
3 provide for the redistricting of Louisiana's congressional districts; to provide with
4 respect to positions and offices, other than congressional, which are based upon
5 congressional districts; to provide for the effectiveness; and to provide for related
6 matters.

7 Be it enacted by the Legislature of Louisiana:

8 Section 1. R.S. 18:1276 is hereby enacted to read as follows:

9 §1276. Congressional districts

10 Louisiana shall be divided into six congressional districts, and the qualified
11 electors of each district shall elect one representative to the United States House of
12 Representatives. The districts shall be composed as follows:

- 13 (1) District 1 is composed of Precincts 1, 2, 3, 4, 5, 7, 8, 9, 10, 11, 12, 13, 14,
- 14 15, 16, 17, 18, 19, 20, 21, 22, 23, 24, 25, 26, 27, 28, 29, 30, 31, 32, 33, 34, 35, 36, 37,
- 15 38, 39, 40, 41, 42, 43, 44, 45, 46, 51, 52, 53, 54, 55, 56, 58, 59, 60, 61, 62, 63, 64, 65,
- 16 66, 67, 68, 69, 70, 71, 72, 73, 74, 75, 76, 77, 78, 79, 80, 81, 82, 83, 84, 85, 86, 87, 88,
- 17 89, 90, 91, 92, 93, 94, 95, 96, 97, 98, 99, 100, 101, 102, 103, 105, 106, 117, 118, 119,
- 18 120, 121, 122, 123, 124, 125A, 125B, 126, 127, 128, 129, 130, 132, 134, 136, 192,
- 19 198, 199, 246, 247, 248, 1-GI, 1-H, 2-H, 3-H, 4-H, 5-H, 6-H, 7-H, 8-H, 9-H, 1-K,
- 20 2-K, 3-K, 4-K, 5-K, 6-KA, 6-KB, 7-KA, 7-KB, 8-K, 9-K, 10-K, 11-K, 12-K, 13-KA,

1 14-K, 16-K, 17-K, 18-K, 19-K, 20-K, 25-K, 27-K, 28-K, 34-K, 35-K, and 1-L of
2 Jefferson Parish; Precincts 3-6, 4-1, 4-2, 4-3, 4-4, 4-5, 4-6, 9-1, 9-2, 10-1, 10-2, 10-3,
3 10-4, 10-5, 10-6, 10-7, 10-8, 10-9, 10-10, 10-11, 10-12, 10-13, 10-14, 10-15, 10-16,
4 11-1, and 11-2 of Lafourche Parish; Precincts 3-20, 4-7, 4-8, 4-9, 4-11, 4-14, 4-15,
5 4-17, 4-17A, 4-18, 4-20, 4-21, 4-22, 4-23, 5-15, 5-16, 5-17, 5-18, 7-41, 7-42, 14-2,
6 14-3, 14-4, 14-5, 14-6, 14-7, 14-8, 14-9, 14-10, 14-11, 14-12, 14-13A, 14-14, 14-15,
7 14-16, 14-18A, 14-19, 14-21, 16-2, 16-3, 17-1, 17-17, 17-18, 17-18A, 17-19, and
8 17-20 of Orleans Parish; Plaquemines Parish; St. Bernard Parish; Precincts 101, 102,
9 103, 104, 105, 106, 107, 108, 110, 111, 112, 113, 114, 115, 116, 118, 301, 302, 303,
10 304, 305, 306, 307, 308, 309, 310, 312, 313, 314, 401, 402, 403, 404, 405, 406, 407,
11 408, 409, 410, 411, 412, 413, 414, 415, 416, 417, 418, 419, 420, 421, 422, 426, 427,
12 429, 430, 501, 502, 503, 504, 505, 601, 602, 603, 604, 605, 606, 609, 701, 702, 703,
13 704, 705, 706, 801, 802, 803, 804, 805, 806, 807, 808, 809, 810, 811, 812, 813, 814,
14 815, 816, 817, 818, 901, 902, 903, 904, 905, 906, 907, 909, 910, 911, 912, 913, 914,
15 915, 916, 917, 918, 921, 922, A01, A02, A03, A04, C01, C02, C03, C04, C05, C06,
16 C07, C08, C09, C10, C11, M01, M02, M03, M04, M05, M06, M07, M08, M09,
17 M10, M11, M12, MD1, P01, S01, S02, S03, S04, S05, S06, S07, S08, S09, S10, S11,
18 S13, S15, S16, S17, S18, S19, S20, S21, S22, S23, S24, and S25 of St. Tammany
19 Parish; Precincts 43, 45, 45A, 46, 47, 48, 49, 70, 70A, 71, 72, 72A, 73, 74, 122,
20 122A, 122B, 124, 124A, 133A, 137, 137A, 137B, 137C, 137D, 139, 141, 141A, 143,
21 143A, 145, 147, 149, 149A, and 151 of Tangipahoa Parish; Precincts 15, 19, 20, 21,
22 23, 25, 27, 29, 31, 32, 34, 35, 36, 38, 41, 43, 45, 46, 48, 49, 52, 53, 54, 55, 56, 57, 58,
23 59, 60, 61, 63, 69, 71, 72, 73, 83, 84, 85, 88, 89, 90, 110, and 111 of Terrebonne
24 Parish; and Precinct 4-11 of Washington Parish.

25 (2) District 2 is composed of Precincts 36, 37, 39, 42, 44, 45, 47, 48, 50, 51,
26 52, 53, 54, 55, 57, and 65 of Ascension Parish; Precincts 1-1, 1-2, 2-2, 4-3, 5-5, 6-1,
27 6-2, 6-3, and 7-1 of Assumption Parish; Precincts 1-2, 1-3, 1-4, 1-5, 1-6, 1-10, 1-11,
28 1-13, 1-14, 1-15, 1-16, 1-17, 1-18, 1-19, 1-21, 1-22, 1-23, 1-24, 1-25, 1-26, 1-27,
29 1-28, 1-29, 1-30, 1-31, 1-32, 1-36, 1-45, 1-50, 1-51, 1-58, 1-61, 1-62, 1-63, 1-67,

1 1-77, 1-84, 1-85, 1-86, 1-91, 1-92, 1-93, 1-94, 1-95, 1-100, 1-101, 1-104, 2-1, 2-9,
2 2-11, 2-13, 2-16, 2-20, 2-22, 2-23, 2-24, and 2-30 of East Baton Rouge Parish;
3 Precincts 1, 3, 7, 9, 10, 11, 12, 13C, 14, 14A, 15, 16, 17, 18, 19, 20, 21, 22, and 23
4 of Iberville Parish; Precincts 57, 104, 108, 115, 116, 131, 133, 138, 150, 151, 152,
5 153, 154, 155, 156, 157A, 157B, 170, 171, 172, 173, 174, 175, 176, 177, 178, 179A,
6 179B, 180, 181, 182, 183, 184, 185A, 185B, 187, 188, 189, 190, 191, 193A, 193B,
7 194A, 194B, 195, 196, 197A, 197B, 200, 201, 202, 203, 204, 205, 210, 211, 212,
8 213A, 213B, 213C, 214A, 214B, 215, 216A, 216B, 216C, 217, 225, 226, 227, 228,
9 229, 230, 231, 232A, 232B, 234, 235, 236, 237, 238A, 238B, 1-G, 2-G, 3-G, 4-G,
10 5-G, 6-G, 7-G, 8-G, 9-G, 10-G, 11-G, 12-G, 13-G, 13-KB, 15-K, 21-K, 22-K, 23-K,
11 24-K, 26-K, 29-K, 30-K, 31-K, 33-K, 1-W, 2-W, 3-W, 4-W, 5-W, 6-W, and 7-W of
12 Jefferson Parish; Precincts 1-1, 1-2, 1-5, 1-6, 2-1, 2-2, 2-4, 2-6, 2-7, 3-1, 3-8, 3-9,
13 3-12, 3-14, 3-15, 3-18, 3-19, 4-2, 4-3, 4-5, 4-6, 5-1, 5-2, 5-3, 5-5, 5-7, 5-8, 5-9, 5-10,
14 5-11, 5-12, 5-13, 6-1, 6-2, 6-4, 6-6, 6-7, 6-8, 6-9, 7-1, 7-2, 7-4, 7-5, 7-6, 7-7, 7-8,
15 7-9A, 7-10, 7-11, 7-12, 7-13, 7-14, 7-15, 7-16, 7-17, 7-18, 7-19, 7-20, 7-21, 7-23,
16 7-24, 7-25, 7-25A, 7-26, 7-27, 7-27B, 7-28, 7-28A, 7-29, 7-30, 7-32, 7-33, 7-35,
17 7-37, 7-37A, 7-40, 8-1, 8-2, 8-4, 8-6, 8-7, 8-8, 8-9, 8-12, 8-13, 8-14, 8-15, 8-19,
18 8-20, 8-21, 8-22, 8-23, 8-24, 8-25, 8-26, 8-27, 8-28, 8-30, 9-1, 9-3, 9-4, 9-5, 9-6, 9-7,
19 9-8, 9-9, 9-10, 9-11, 9-12, 9-13, 9-14, 9-15, 9-16, 9-17, 9-19, 9-21, 9-23, 9-25, 9-26,
20 9-28, 9-28C, 9-29, 9-30, 9-30A, 9-31, 9-31A, 9-31B, 9-31D, 9-32, 9-33, 9-34A,
21 9-35, 9-35A, 9-36, 9-36B, 9-37, 9-38, 9-38A, 9-39, 9-39B, 9-40, 9-40A, 9-40C, 9-41,
22 9-41A, 9-41B, 9-41C, 9-41D, 9-42, 9-42C, 9-43A, 9-43B, 9-43C, 9-43E, 9-43F,
23 9-43G, 9-43H, 9-43I, 9-43J, 9-43K, 9-43L, 9-43M, 9-43N, 9-44, 9-44A, 9-44B,
24 9-44D, 9-44E, 9-44F, 9-44G, 9-44I, 9-44J, 9-44L, 9-44M, 9-44N, 9-44O, 9-44P,
25 9-44Q, 9-45, 9-45A, 10-3, 10-6, 10-7, 10-8, 10-9, 10-11, 10-12, 10-13, 10-14, 11-2,
26 11-3, 11-4, 11-5, 11-8, 11-9, 11-10, 11-11, 11-12, 11-13, 11-14, 11-17, 12-1, 12-2,
27 12-3, 12-4, 12-5, 12-6, 12-7, 12-8, 12-9, 12-10, 12-11, 12-12, 12-13, 12-14, 12-16,
28 12-17, 12-19, 13-1, 13-2, 13-3, 13-4, 13-5, 13-6, 13-7, 13-8, 13-9, 13-10, 13-11,
29 13-12, 13-13, 13-14, 13-15, 13-16, 14-1, 14-17, 14-20, 14-23, 14-24A, 14-25, 14-26,

1 15-1, 15-2, 15-3, 15-5, 15-6, 15-8, 15-9, 15-10, 15-11, 15-12, 15-12A, 15-13,
2 15-13A, 15-13B, 15-14, 15-14A, 15-14B, 15-14C, 15-14D, 15-14E, 15-14F, 15-14G,
3 15-15, 15-15A, 15-15B, 15-16, 15-17, 15-17A, 15-17B, 15-18, 15-18A, 15-18B,
4 15-18C, 15-18D, 15-18E, 15-18F, 15-19, 15-19A, 15-19B, 15-19C, 16-1, 16-1A,
5 16-4, 16-5, 16-6, 16-7, 16-8, 16-9, 17-2, 17-3, 17-4, 17-5, 17-6, 17-7, 17-8, 17-9,
6 17-10, 17-11, 17-12, 17-13, 17-13A, 17-14, 17-15, and 17-16 of Orleans Parish;
7 Precincts 1-1, 1-2, 1-3, 1-5, 2-1, 2-2, 2-3, 2-4, 2-5, 4-1, 4-2, 4-3, 4-4, 5-1, 5-4, 6-6,
8 6-7, 6-8, 7-1, 7-2, 7-3, and 7-4 of St. Charles Parish; St. James Parish; Precincts 1-1,
9 1-2, 1-3, 1-4, 1-5, 2-1, 2-2, 2-3, 2-4, 3-1, 3-2, 3-4, 4-1, 4-2, 4-3, 4-14, 5-1, 5-8, 6-1,
10 6-3, 6-4, and 7-7 of St. John the Baptist Parish; and Precincts 1A, 1C, 6, 8, 10A, 10B,
11 11A, 11B, 13A, 13B, 14, and 15 of West Baton Rouge Parish.

12 (3) District 3 is composed of Acadia Parish; Precinct 9-1 of Assumption
13 Parish; Precincts 160E, 162E, 162W, 163, 164, 165, 166E, 166W, 167, 260, 261,
14 262, 300, 301, 302, 303, 304, 305, 306, 307, 308, 309E, 309W, 310, 311, 312, 313E,
15 313W, 314, 315E, 315W, 316E, 316W, 317, 318, 319N, 319S, 320E, 320W, 321,
16 322, 323, 324, 325, 326, 327, 328, 329, 330, 331, 332N, 332S, 333, 334, 335, 336,
17 337, 338, 339, 340, 360, 361, 362, 363, 364, 365, 366, 367, 368, 369, 370, 371N,
18 371S, 372, 400, 401, 402, 403, 404, 405, 406, 407, 408, 440, 441, 460E, 460W, 461,
19 463, 464, 465, 466E, 466W, 467, 468, 469, 561, 562, 663, 664, 700, 701, 702, 703,
20 760, 761, 762, 800, 801, 860N, 860S, 861E, and 861W of Calcasieu Parish; Cameron
21 Parish; Iberia Parish; Precincts 5, 25, and 31 of Iberville Parish; Jefferson Davis
22 Parish; Lafayette Parish; Precincts 38, 41, 42, and 43 of St. Landry Parish; Precincts
23 1, 2, 3, 4, 5, 6, 7, 8, 9, 10, 11, 12, 13, 14, 15, 16, 17, 18, 19, 20, 21, 22, 23, 24, and
24 25 of St. Martin Parish; St. Mary Parish; Precincts 65, 68, and 82 of Terrebonne
25 Parish; and Vermilion Parish.

26 (4) District 4 is composed of Allen Parish; Beauregard Parish; Precincts 1-1,
27 1-2, 1-4, 2-1, 2-2, 2-3, 2-4, 2-5, 2-6, 3-1, 3-2, 3-3, 3-4, 3-5, 3-6, 3-7, 4-1, 4-2, 4-4,
28 5-1, 5-2, 5-3, 5-4, 6-1, 6-2, 6-3, 6-4, 7-1, 7-2, and 7-5 of Bienville Parish; Bossier
29 Parish; Caddo Parish; Precincts 160W, 161, 560, 600, 601, 602, 603, 660, 661, and

1 662 of Calcasieu Parish; Claiborne Parish; DeSoto Parish; Evangeline Parish;
 2 Precincts 1-1, 1-2, 2-1, and 2-2 of Grant Parish; Natchitoches Parish; Precincts S1,
 3 S2, S5, S7, S8, S9, S10, S22, S24, S25, S26, S27, S28, and S29 of Rapides Parish;
 4 Red River Parish; Sabine Parish; Precincts 1, 2, 3, 4, 5, 6, 7, 7A, 8, 9, 10, 11, 12, 13,
 5 14, 15, 16, 17, 18, 19, 20, 21, 22, 23, 24, 25, 26, 27, 28, 29, 30, 31, 32, 33, 34, 35, 36,
 6 37, 39, 40, 44, 45, 46, 47, 48, 49, 50, 51, and 52 of St. Landry Parish; Precincts 26,
 7 27, 28, and 29 of St. Martin Parish; Vernon Parish; Webster Parish; and Precinct 1-5
 8 of Winn Parish.

9 (5) District 5 is composed of Avoyelles Parish; Precincts 1-3, 7-3, and 7-4
 10 of Bienville Parish; Caldwell Parish; Catahoula Parish; Concordia Parish; Precinct
 11 2-6 of East Baton Rouge Parish; East Carroll Parish; East Feliciana Parish; Franklin
 12 Parish; Precincts 1-3, 2-3, 2-5, 3-1, 3-2, 3-3, 4-1, 4-2, 4-3, 5-1, 5-2, 5-3, 6-1, 6-2, 6-3,
 13 6-4, 7-1, 7-2, 7-3, 7-4, 8-1, 8-2, 8-3, and 8-4 of Grant Parish; Jackson Parish;
 14 LaSalle Parish; Lincoln Parish; Precincts 1 and 3B of Livingston Parish; Madison
 15 Parish; Morehouse Parish; Ouachita Parish; Precincts 1, 2, 3, 4, 5, 6, 7, 8, 9, 10, 11,
 16 13, and 14 of Pointe Coupee Parish; Precincts C1, C2, C3, C4, C5, C6, C7, C8, C9,
 17 C10, C11-A, C11-B, C13, C14, C15, C17, C18, C19, C20, C21, C22, C23, C24, C25,
 18 C26, C27, C28, C30, C31, C32, C33, C34, C35, C36, C37-A, C37-B, C38-A, C38-B,
 19 C39, C40, C41, C42, N1, N2, N3, N4, N5, N6, N7, N8, N9, N10, N11, N12, N13-A,
 20 N13-B, N14-A, N14-B, N15, N16, N17, N18-A, N18-B, N19, N20, N21, N22, N23,
 21 N24, N25, N26, N27, N28, N29, S4, S6A, S6B, S11, S13, S14, S15, S16, S17, S18,
 22 S19, S20, S21, and S23 of Rapides Parish; Richland Parish; St. Helena Parish;
 23 Precincts 201, 202, 203, 204, 205, 206, 207, and F01 of St. Tammany Parish;
 24 Precincts 1, 2, 6, 11, 15, 16, 17, 18, 26, 27, 28, 33, 40, 40A, 41, 42, 42A, 44, 101,
 25 102, 104, 104A, 105, 106, 106A, 107, 108, 109, 110, 111A, 112, 114, 115B, 116,
 26 117, 118, 119, 120, 120A, 120B, 121, 121A, 123, 125, 127, 127A, 129, 129A, and
 27 133 of Tangipahoa Parish; Tensas Parish; Union Parish; Precincts 1-1, 1-2, 2-1, 3-1,
 28 3-2, 3-3, 3-3A, 3-3B, 3-3C, 4-1, 4-1A, 4-2A, 4-3, 4-3B, 4-4, 4-5, 4-5B, 4-6, 4-7,
 29 4-7B, 4-8, 4-9, 4-9A, 4-10, 4-10A, 5-1, 5-2, 5-3, 6-1, 6-2, 6-3, 6-4, 7-1, 7-1A, 7-2,

1 7-3, 8-1, 8-2, 8-3, and 9-1 of Washington Parish; West Carroll Parish; West Feliciana
 2 Parish; and Precincts 1-1, 1-3, 1-4, 2-1, 2-2, 2-3, 3-1A, 3-1B, 3-1C, 3-2, 3-2A, 3-3,
 3 4-1, 4-2, 4-2A, 4-3, 4-5, 5-1, 5-2, 5-3, 5-5, 6-1, 6-1A, 6-3, 6-6, 7-1, 7-1A, 7-2, 7-2A,
 4 and 7-7 of Winn Parish.

5 (6) District 6 is composed of Precincts 1, 2, 3, 4, 5, 6, 7, 8, 9, 10, 11, 12, 13,
 6 14, 15, 16, 17, 18, 20, 21, 22, 23, 24, 25, 26, 27, 28, 30, 31, 32, 33, 34, 35, 40, 41, 43,
 7 58, 61, 62, 63, 64, 66, 71, 72, 73, 76, 77, and 78 of Ascension Parish; Precincts 2-1,
 8 2-3, 2-4, 2-5, 3-1, 3-2, 4-1, 4-2, 5-1, 5-2, 5-3, 7-2, 7-3, and 8-1 of Assumption Parish;
 9 Precincts 1-1, 1-7, 1-8, 1-9, 1-12, 1-20, 1-33, 1-34, 1-35, 1-37, 1-38, 1-39, 1-40,
 10 1-41, 1-42, 1-43, 1-44, 1-46, 1-47, 1-48, 1-49, 1-52, 1-53, 1-54, 1-55, 1-56, 1-57,
 11 1-59, 1-60, 1-64, 1-65, 1-66, 1-68, 1-69, 1-70, 1-71, 1-72, 1-73, 1-74, 1-75, 1-76,
 12 1-78, 1-79, 1-80, 1-81, 1-82, 1-83, 1-87, 1-88, 1-89, 1-90, 1-97, 1-98, 1-99, 1-102,
 13 1-103, 1-105, 1-107, 2-2, 2-3, 2-4, 2-5, 2-7, 2-8, 2-10, 2-12, 2-14, 2-15, 2-17, 2-18,
 14 2-19, 2-21, 2-25, 2-26, 2-27, 2-28, 2-29, 2-31, 2-32, 2-33, 2-34, 2-35, 2-36, 2-37, 3-1,
 15 3-2, 3-3, 3-4, 3-5, 3-6, 3-7, 3-8, 3-9, 3-10, 3-11, 3-12, 3-13, 3-14, 3-15, 3-16, 3-17,
 16 3-18, 3-19, 3-20, 3-21, 3-22, 3-23, 3-24, 3-25, 3-26, 3-27, 3-28, 3-29, 3-30, 3-31,
 17 3-32, 3-33, 3-34, 3-35, 3-36, 3-37, 3-38, 3-39, 3-40, 3-41, 3-43, 3-44, 3-45, 3-46,
 18 3-47, 3-48, 3-49, 3-50, 3-51, 3-52, 3-53, 3-54, 3-55, 3-56, 3-57, 3-58, 3-59, 3-60,
 19 3-61, 3-62, 3-63, 3-64, 3-65, 3-66, 3-67, 3-68, 3-69, 3-70, 3-71, and 3-72 of East
 20 Baton Rouge Parish; Precincts 4, 6, 13, 15B, 24, 26, 27, 28, 29, and 32 of Iberville
 21 Parish; Precincts 1-1, 1-2, 1-3, 1-4, 1-5, 2-1, 2-1A, 2-2, 2-3, 2-3A, 2-4, 2-5, 2-6, 2-7,
 22 2-8, 2-9, 2-10, 2-11, 2-12, 2-13, 2-14, 3-1, 3-2, 3-3, 3-4, 3-5, 5-1, 5-1A, 5-1B, 5-2,
 23 6-1, 6-2, 6-3, 6-4, 6-5, 7-1, 7-2, 7-3, 7-4, 8-1, 11-3, 11-4, and 11-5 of Lafourche
 24 Parish; Precincts 1A, 1B, 1C, 1D, 2, 2A, 3, 3A, 4, 4A, 4B, 5, 5A, 5B, 5C, 6, 6A, 6B,
 25 7, 7A, 7B, 7C, 7D, 8A, 8B, 9, 10, 11, 11A, 12, 13A, 13B, 14, 15, 16, 17, 18, 18A, 19,
 26 19A, 20, 21, 21A, 22, 23, 23A, 23B, 23C, 24, 24B, 24C, 25, 26, 26A, 26B, 26C, 27,
 27 28A, 28B, 29, 30, 31, 32, 33, 34, 35, 35A, 36, 36A, 38, 39, 39A, 39B, 40, 40A, 41,
 28 and 43 of Livingston Parish; Precincts 12, 15, 16, 17, 18, 19, and 20 of Pointe
 29 Coupee Parish; Precincts 1-6, 2-6, 3-1, 3-2, 3-3, 5-3, 5-5, 6-1, 6-2, and 6-4 of

1 St. Charles Parish; Precincts 4-13, 5-4, 5-7, 7-2, 7-3, and 7-5 of St. John the Baptist
2 Parish; Precincts 1, 4, 5, 7, 8, 9, 10, 11, 12, 13, 14, 16, 17, 18, 51, 64, 67, 74, 76, 86,
3 and 87 of Terrebonne Parish; and Precincts 1B, 2A, 2B, 3, 4, 5, 7A, 7B, 9, 12, 16, 17,
4 18, 19, 20, 21, and 22 of West Baton Rouge Parish.

5 Section 2. R.S. 18:1276.1 is hereby repealed in its entirety.

6 Section 3.(A) The precincts referenced in this Act are those precincts identified as
7 Voting Districts (VTDs) in the 2020 Census Redistricting TIGER/Line Shapefiles for the
8 State of Louisiana as validated through the data verification program of the Louisiana House
9 of Representatives and the Louisiana Senate and available on the legislature's website on the
10 effective date of this Section.

11 (B) When a precinct referenced in this Act has been subdivided by action of the
12 parish governing authority on a nongeographic basis or subdivided by action of the parish
13 governing authority on a geographic basis in accordance with the provisions of R.S.
14 18:532.1, the enumeration in this Act of the general precinct designation shall include all
15 nongeographic and all geographic subdivisions thereof, however such subdivisions may be
16 designated.

17 (C) The territorial limits of the districts as provided in this Act shall continue in
18 effect until changed by law regardless of any subsequent change made to the precincts by
19 the parish governing authority.

20 Section 4. The provisions of this Act shall not reduce the term of office of any
21 person holding any position or office on the effective date of this Section for which the
22 appointment or election is based upon a congressional district as composed pursuant to R.S.
23 18:1276.1. Any position or office that is filled by appointment or election based on a
24 congressional district and that is to be filled after January 3, 2023, shall be appointed or
25 elected from a district as it is described in Section 1 of this Act.

26 Section 5.(A) Solely for the purposes of qualifying for election and the election of
27 representatives to the United States Congress at the regularly scheduled election for
28 representatives to the congress in 2022, the provisions of Section 1 of this Act shall become
29 effective upon signature of this Act by the governor or, if not signed by the governor, upon

1 expiration of the time for bills to become law without signature by the governor, as provided
2 in Article III, Section 18 of the Constitution of Louisiana. If this Act is vetoed by the
3 governor and subsequently approved by the legislature, the provisions of Section 1 of this
4 Act shall become effective on the day following such approval for the purposes established
5 in this Subsection.

6 (B) For subsequent elections of representatives to the United States Congress and
7 for all other purposes, the provisions of Section 1 of this Act shall become effective at noon
8 on January 3, 2023.

9 (C) The provisions of Section 2 of this Act shall become effective at noon on
10 January 3, 2023.

11 (D) The provisions of this Section and Sections 3 and 4 of this Act shall become
12 effective upon signature of this Act by the governor or, if not signed by the governor, upon
13 expiration of the time for bills to become law without signature by the governor, as provided
14 in Article III, Section 18 of the Constitution of Louisiana. If this Act is vetoed by the
15 governor and subsequently approved by the legislature, the provisions of this Section and
16 Sections 3 and 4 of this Act shall become effective on the day following such approval.

DIGEST

The digest printed below was prepared by House Legislative Services. It constitutes no part of the legislative instrument. The keyword, one-liner, abstract, and digest do not constitute part of the law or proof or indicia of legislative intent. [R.S. 1:13(B) and 24:177(E)]

HB 19 Original

2022 First Extraordinary Session

Gadberry

Abstract: Provides for the redistricting of the state's congressional districts and provides for the composition of each of the six congressional districts. Effective for election purposes only for the regular congressional elections in 2022 and for all other purposes at noon on Jan. 3, 2023.

Statistical summaries of proposed law, including district variances from the ideal population of 776,292 and the range of those variances, as well as maps illustrating proposed district boundaries accompany this digest. (*Attached to the bill version on the internet.*)

Present U.S. Constitution (14th Amendment) provides that representatives in congress shall be apportioned among the several states according to their respective numbers, counting the whole number of persons in each state. The U.S. Supreme Court has held that the population of congressional districts in the same state must be as nearly equal in population as practicable.

Proposed law redraws district boundaries for the six congressional districts, effective upon signature of governor or lapse of time for gubernatorial action for purposes of the 2022 election.

Proposed law retains present districts until noon on Jan. 3, 2023, at which time present law is repealed and proposed districts are effective for all other purposes.

Proposed law specifies that precincts referenced in district descriptions are those precincts identified as Voting Districts (VTDs) in the 2020 Census Redistricting TIGER/Line Shapefiles for the state of La. as validated through the data verification program of the La. legislature. Also specifies that if any such precinct has been subdivided by action of the parish governing authority on a nongeographic basis or subdivided by action of the parish governing authority on a geographic basis in accordance with present law, the enumeration of the general precinct designation shall include all nongeographic and all geographic subdivisions thereof. Further provides that the territorial limits of the districts as enacted shall continue in effect until changed by law regardless of any subsequent change made to the precincts by the parish governing authority.

Proposed law specifies that proposed law does not reduce the term of office of any person holding any position or office on the effective date of proposed law for which the appointment or election is based upon a congressional district as composed pursuant to present law. Specifies that any position or office filled after Jan. 3, 2023, for which the appointment or election is based on a congressional district shall be appointed or elected from a district as it is described in proposed law.

Population data in the summaries accompanying this digest are derived from 2020 Census Redistricting Data (Public Law 94-171), Summary File for Louisiana. Population data, statistical information, and maps are supplied for purposes of information and analysis and comprise no part of proposed law.

Effective for election purposes only for the regular congressional elections in 2022; effective for all other purposes at noon on Jan. 3, 2023.

(Adds R.S. 18:1276; Repeals R.S. 18:1276.1)

Plan Statistics

Plan: 21ES-51 (Gadberry)

<u>Districts:</u>	<u># of Members</u>	<u>Actual Population</u>	<u>Ideal Population</u>	<u>Absolute Deviation</u>	<u>Relative Deviation</u>
District 1	1	776,308	776,292	16	0.002%
District 2	1	776,253	776,292	-39	-0.005%
District 3	1	776,257	776,292	-35	-0.005%
District 4	1	776,301	776,292	9	0.001%
District 5	1	776,311	776,292	19	0.002%
District 6	1	776,327	776,292	35	0.005%
Grand Total:	6	4,657,757	4,657,752		

Ideal Population Per Member:	776292		
Number of Districts for Plan Type:	6		
Range of District Populations:	776,253	to	776,327
Absolute Mean Deviation:	12		
Absolute Range:	-39	to	35
Absolute Overall Range:	74		
Relative Mean Deviation:	0.00%		
Relative Range:	-0.01%	to	0.00%
Relative Overall Range:	0.01%		

<i>Ideal - Actual:</i>	-5
<i>Remainder:</i>	5
<i>Unassigned Population:</i>	0

Total Population

Plan: 21ES-51 (Gadberry)

	Total Population	Total White	Total Black	Total Asian	Total American Indian	Total Other	Total Hispanic	VAP Total	VAP White	VAP Black	VAP Asian	VAP American Indian	VAP Other	VAP Hispanic Total
District 1	776,308	533,352	122,174	24,515	22,590	73,677	92,140	601,057	429,086	85,313	18,022	16,038	52,598	64,906
	100.000%	68.704%	15.738%	3.158%	2.910%	9.491%	11.869%	100.000%	71.389%	14.194%	2.998%	2.668%	8.751%	10.799%
District 2	776,253	218,669	473,165	23,769	8,227	52,423	67,842	600,366	185,477	352,101	18,971	6,401	37,416	47,441
	100.000%	28.170%	60.955%	3.062%	1.060%	6.753%	8.740%	100.000%	30.894%	58.648%	3.160%	1.066%	6.232%	7.902%
District 3	776,257	506,707	205,647	16,557	11,373	35,973	42,418	586,821	397,643	144,342	11,898	8,339	24,599	28,312
	100.000%	65.276%	26.492%	2.133%	1.465%	4.634%	5.464%	100.000%	67.762%	24.597%	2.028%	1.421%	4.192%	4.825%
District 4	776,301	444,434	274,062	11,448	18,215	28,142	35,176	590,414	351,680	196,993	8,292	13,640	19,809	24,085
	100.000%	57.250%	35.304%	1.475%	2.346%	3.625%	4.531%	100.000%	59.565%	33.365%	1.404%	2.310%	3.355%	4.079%
District 5	776,311	460,674	269,293	9,173	12,984	24,187	29,260	598,033	368,273	194,712	7,068	9,841	18,139	21,419
	100.000%	59.341%	34.689%	1.182%	1.673%	3.116%	3.769%	100.000%	61.581%	32.559%	1.182%	1.646%	3.033%	3.582%
District 6	776,327	493,816	198,778	21,826	13,671	48,236	55,713	593,857	392,352	142,308	16,165	9,981	33,051	37,499
	100.000%	63.609%	25.605%	2.811%	1.761%	6.213%	7.176%	100.000%	66.068%	23.963%	2.722%	1.681%	5.565%	6.314%
Grand Total	4,657,757	2,657,652	1,543,119	107,288	87,060	262,638	322,549	3,570,548	2,124,511	1,115,769	80,416	64,240	185,612	223,662
	100.000%	57.059%	33.130%	2.303%	1.869%	5.639%	6.925%	100.000%	59.501%	31.249%	2.252%	1.799%	5.198%	6.264%

Voter Registration

Plan: 21ES-51 (Gadberry)

	Reg Total Dec 2021	Reg White Dec 2021	Reg Black Dec 2021	Reg Other Dec 2021	Reg Dem Total Dec 2021	Reg Rep Total Dec 2021	Reg Other Total Dec 2021
District 1	487,623	384,877	59,368	43,378	138,168	202,468	146,987
	81.128%	78.929%	12.175%	8.896%	28.335%	41.521%	30.144%
District 2	495,455	152,122	304,077	39,256	313,715	58,288	123,452
	82.525%	30.703%	61.373%	7.923%	63.319%	11.765%	24.917%
District 3	479,331	344,120	114,731	20,480	169,015	179,862	130,454
	81.683%	71.792%	23.936%	4.273%	35.261%	37.524%	27.216%
District 4	475,366	294,816	159,898	20,652	190,665	166,830	117,871
	80.514%	62.019%	33.637%	4.344%	40.109%	35.095%	24.796%
District 5	482,295	310,955	157,337	14,003	189,562	176,221	116,512
	80.647%	64.474%	32.623%	2.903%	39.304%	36.538%	24.158%
District 6	474,276	341,099	107,337	25,840	159,879	185,111	129,286
	79.864%	71.920%	22.632%	5.448%	33.710%	39.030%	27.260%
Grand Total	2,894,346	1,827,989	902,748	163,609	1,161,004	968,780	764,562

Splits

Plan: 21ES-51 (Gadberry)

	Total Population	Total White	Total Black	Total Asian	Total American Indian	Total Other	VAP Total	VAP White	VAP Black	VAP Asian	VAP American Indian	VAP Other	Reg Total Dec 2021	Reg White Dec 2021	Reg Black Dec 2021	Reg Other Dec 2021
District 1																
*Jefferson	238,491	154,648	30,511	11,815	4,323	37,194	190,889	129,265	22,307	8,910	3,269	27,138	147,035	115,580	12,565	18,890
*Lafourche	38,853	31,206	1,664	517	2,823	2,643	29,521	24,609	943	379	1,869	1,721	22,689	20,724	503	1,462
*Orleans	49,479	39,377	4,042	1,971	593	3,496	40,805	32,771	3,409	1,510	466	2,649	33,732	28,688	1,570	3,474
Plaquemines	23,515	14,287	5,428	1,317	697	1,786	17,334	10,856	3,857	925	500	1,196	13,908	9,513	3,134	1,261
St. Bernard	43,764	24,497	12,309	1,381	947	4,630	31,775	18,992	7,944	982	688	3,169	25,653	18,233	5,497	1,923
*St. Tammany	252,609	186,444	37,854	5,706	5,411	17,194	192,773	146,466	26,175	4,032	3,979	12,121	169,862	137,702	20,616	11,544
*Tangipahoa	61,875	40,546	16,435	785	1,258	2,851	46,869	32,227	11,183	539	919	2,001	36,455	26,587	8,360	1,508
*Terrebonne	66,861	41,557	13,908	1,021	6,517	3,858	50,420	33,277	9,485	743	4,333	2,582	37,690	27,266	7,120	3,304
*Washington	861	790	23	2	21	25	671	623	10	2	15	21	599	584	3	12
District 1	776,308	533,352	122,174	24,515	22,590	73,677	601,057	429,086	85,313	18,022	16,038	52,598	487,623	384,877	59,368	43,378
	100.000%	68.704%	15.738%	3.158%	2.910%	9.491%	100.000%	71.389%	14.194%	2.998%	2.668%	8.751%	81.128%	78.929%	12.175%	8.896%
District 2																
*Ascension	19,491	5,102	13,211	115	149	914	14,340	4,229	9,308	86	99	618	12,440	3,566	8,424	450
*Assumption	6,710	2,870	3,622	23	44	151	5,270	2,334	2,764	15	33	124	4,756	1,997	2,702	57
*East Baton Rouge	95,000	5,632	86,432	495	374	2,067	71,475	5,099	64,120	392	294	1,570	59,558	2,996	54,811	1,751
*Iberville	20,831	8,400	11,142	172	142	975	16,449	7,144	8,234	124	109	838	13,442	5,322	7,800	320
*Jefferson	202,290	66,287	95,706	11,209	3,363	25,725	153,765	54,870	69,868	8,782	2,566	17,679	116,066	44,036	57,011	15,019
*Orleans	334,518	87,085	214,927	10,885	3,073	18,548	265,391	77,481	162,659	9,010	2,482	13,759	222,512	63,298	139,955	19,259
*St. Charles	33,689	20,298	10,702	475	582	1,632	25,323	15,792	7,666	286	435	1,144	22,422	14,559	6,838	1,025
St. James	20,192	9,973	9,762	60	82	315	15,505	7,883	7,297	31	64	230	14,966	7,254	7,501	211
*St. John the Baptist	32,678	8,833	21,557	244	303	1,741	24,826	7,363	15,831	183	235	1,214	22,433	6,282	15,109	1,042
*West Baton Rouge	10,854	4,189	6,104	91	115	355	8,022	3,282	4,354	62	84	240	6,860	2,812	3,926	122
District 2	776,253	218,669	473,165	23,769	8,227	52,423	600,366	185,477	352,101	18,971	6,401	37,416	495,455	152,122	304,077	39,256
	100.000%	28.170%	60.955%	3.062%	1.060%	6.753%	100.000%	30.894%	58.648%	3.160%	1.066%	6.232%	82.525%	30.703%	61.373%	7.923%
District 3																
Acadia	57,576	44,480	10,864	238	573	1,421	42,943	34,071	7,383	173	400	916	37,678	30,555	6,407	716
*Assumption	2,210	2,129	16	4	14	47	1,815	1,760	2	4	11	38	1,582	1,562	4	16
*Calcasieu	205,843	130,574	58,203	4,637	3,264	9,165	155,024	101,871	41,066	3,316	2,409	6,362	114,070	79,992	28,920	5,158
Cameron	5,617	5,232	125	30	75	155	4,358	4,100	79	23	47	109	4,789	4,610	88	91
Iberia	69,929	39,206	24,556	2,123	794	3,250	52,791	31,295	17,069	1,562	581	2,284	44,526	28,287	14,352	1,887
*Iberville	2,443	1,940	424	2	31	46	2,013	1,610	342	2	23	36	1,768	1,418	323	27
Jefferson Davis	32,250	25,066	5,837	183	472	692	24,039	19,121	4,006	111	325	476	20,013	16,350	3,202	461
Lafayette	241,753	153,363	65,136	6,454	3,210	13,590	183,875	121,608	45,917	4,664	2,387	9,299	153,493	108,645	36,481	8,367
*St. Landry	4,766	3,756	723	20	70	197	3,492	2,803	516	11	53	109	2,714	2,251	371	92

Splits

Plan: 21ES-51 (Gadberry)

	Total Population	Total White	Total Black	Total Asian	Total American Indian	Total Other	VAP Total	VAP White	VAP Black	VAP Asian	VAP American Indian	VAP Other	Reg Total Dec 2021	Reg White Dec 2021	Reg Black Dec 2021	Reg Other Dec 2021
District 3																
*St. Martin	44,299	27,682	14,308	554	445	1,310	33,761	21,952	10,186	383	345	895	30,022	20,008	9,316	698
St. Mary	49,406	26,949	15,991	835	1,670	3,961	37,521	21,594	11,520	593	1,173	2,641	30,210	18,712	9,891	1,607
*Terrebonne	2,806	1,853	654	30	132	137	2,177	1,495	469	19	97	97	1,697	1,225	382	90
Vermilion	57,359	44,477	8,810	1,447	623	2,002	43,012	34,363	5,787	1,037	488	1,337	36,769	30,505	4,994	1,270
District 3	776,257	506,707	205,647	16,557	11,373	35,973	586,821	397,643	144,342	11,898	8,339	24,599	479,331	344,120	114,731	20,480
	100.000%	65.276%	26.492%	2.133%	1.465%	4.634%	100.000%	67.762%	24.597%	2.028%	1.421%	4.192%	81.683%	71.792%	23.936%	4.273%
District 4																
Allen	22,750	16,327	4,490	246	947	740	17,510	12,751	3,275	182	646	656	12,201	9,478	2,217	506
Beauregard	36,549	29,529	4,649	402	1,052	917	27,489	22,304	3,495	269	773	648	22,294	18,771	2,369	1,154
*Bienville	11,729	6,225	5,109	48	190	157	9,072	4,925	3,869	24	147	107	7,947	4,362	3,506	79
Bossier	128,746	81,052	32,551	3,492	3,273	8,378	95,876	62,931	22,440	2,448	2,477	5,580	69,743	50,861	14,838	4,044
Caddo	237,848	103,457	119,304	4,034	3,840	7,213	182,407	85,059	86,359	3,008	2,958	5,023	151,296	73,113	71,249	6,934
*Calcasieu	10,942	9,198	1,183	65	272	224	8,142	6,918	832	43	195	154	6,441	5,667	593	181
Claiborne	14,170	7,263	6,360	88	185	274	11,507	6,258	4,824	55	140	230	8,598	4,632	3,820	146
De Soto	26,812	15,284	9,973	117	740	698	20,440	11,909	7,425	86	557	463	18,713	11,330	6,810	573
Evangeline	32,350	21,354	9,235	241	280	1,240	24,408	16,460	6,483	187	217	1,061	20,553	14,566	5,643	344
*Grant	2,266	1,756	399	8	67	36	1,740	1,380	284	4	50	22	1,496	1,288	179	29
Natchitoches	37,515	19,361	15,725	255	861	1,313	29,349	16,010	11,415	198	683	1,043	23,107	12,850	9,224	1,033
*Rapides	13,519	11,014	886	158	649	812	10,433	8,635	629	124	509	536	8,834	7,752	609	473
Red River	7,620	4,195	3,106	25	171	123	5,714	3,338	2,164	3	116	93	5,631	3,130	2,418	83
Sabine	22,155	15,036	3,861	94	2,723	441	17,064	12,054	2,655	66	1,970	319	14,547	11,023	2,184	1,340
*St. Landry	77,774	39,855	35,113	479	566	1,761	58,319	31,406	24,981	342	398	1,192	51,768	27,842	22,634	1,292
*St. Martin	7,468	5,577	1,613	43	94	141	5,643	4,326	1,107	24	68	118	5,098	3,926	1,065	107
Vernon	48,750	35,087	7,611	1,442	1,600	3,010	36,261	26,765	5,133	1,074	1,160	2,129	24,060	19,182	3,011	1,867
Webster	36,967	22,735	12,679	208	687	658	28,753	18,144	9,464	154	558	433	22,737	14,938	7,339	460
*Winn	371	129	215	3	18	6	287	107	159	1	18	2	302	105	190	7
District 4	776,301	444,434	274,062	11,448	18,215	28,142	590,414	351,680	196,993	8,292	13,640	19,809	475,366	294,816	159,898	20,652
	100.000%	57.250%	35.304%	1.475%	2.346%	3.625%	100.000%	59.565%	33.365%	1.404%	2.310%	3.355%	80.514%	62.019%	33.637%	4.344%
District 5																
Avoyelles	39,693	25,625	11,678	434	767	1,189	30,578	20,269	8,311	379	570	1,049	23,426	16,534	6,294	598
*Bienville	1,252	725	491	9	17	10	1,001	561	415	6	15	4	900	481	411	8
Caldwell	9,645	7,646	1,632	51	150	166	7,478	5,969	1,224	46	116	123	6,031	5,124	818	89
Catahoula	8,906	5,776	2,395	46	119	570	6,951	4,557	1,736	33	87	538	6,467	4,639	1,770	58
Concordia	18,687	10,275	7,725	122	233	332	14,217	8,108	5,613	100	167	229	11,964	7,222	4,540	202
*East Baton Rouge	2,620	1,780	738	6	46	50	2,092	1,416	597	6	35	38	1,995	1,387	581	27

Splits

Plan: 21ES-51 (Gadberry)

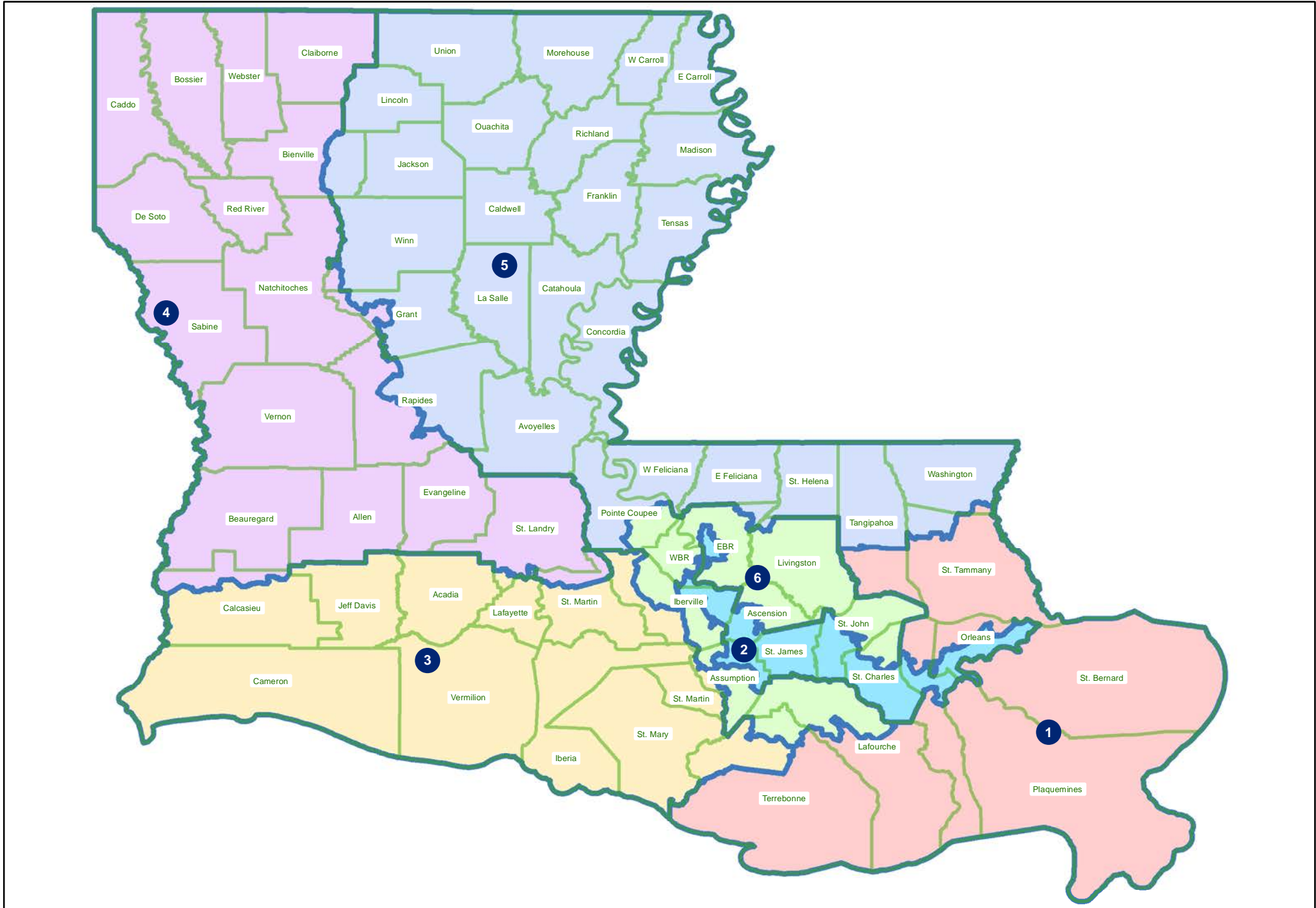
	Total Population	Total White	Total Black	Total Asian	Total American Indian	Total Other	VAP Total	VAP White	VAP Black	VAP Asian	VAP American Indian	VAP Other	Reg Total Dec 2021	Reg White Dec 2021	Reg Black Dec 2021	Reg Other Dec 2021
District 5																
East Carroll	7,459	2,054	5,272	29	43	61	5,901	1,773	4,043	19	27	39	4,709	1,306	3,359	44
East Feliciana	19,539	11,516	7,341	91	262	329	16,183	9,740	5,918	61	198	266	13,600	7,959	5,186	455
Franklin	19,774	12,492	6,802	70	205	205	15,028	9,901	4,779	44	153	151	13,159	9,015	4,034	110
*Grant	19,903	15,953	2,936	125	577	312	15,787	12,584	2,433	93	457	220	11,192	9,886	997	309
Jackson	15,031	9,967	4,166	175	255	468	11,783	7,967	3,125	140	174	377	9,449	6,647	2,610	192
La Salle	14,791	11,348	1,422	283	372	1,366	11,563	8,636	1,065	264	271	1,327	8,792	7,978	637	177
Lincoln	48,396	26,034	19,364	892	662	1,444	38,655	21,306	15,119	744	526	960	25,649	15,672	9,016	961
*Livingston	4,380	3,769	314	29	100	168	3,049	2,665	180	18	65	121	2,638	2,425	124	89
Madison	10,017	3,475	6,363	20	59	100	7,435	2,906	4,391	9	48	81	7,278	2,494	4,674	110
Morehouse	25,629	12,281	12,484	160	370	334	20,062	10,095	9,300	117	279	271	16,922	8,505	8,131	286
Ouachita	160,368	88,545	61,217	2,788	2,661	5,157	120,200	69,974	42,290	2,118	2,059	3,759	99,752	60,515	35,658	3,579
*Pointe Coupee	11,210	5,019	5,756	72	67	296	8,707	4,128	4,252	63	45	219	8,116	3,933	4,084	99
*Rapides	116,504	66,496	41,706	2,270	2,453	3,579	88,359	52,738	29,576	1,662	1,825	2,558	71,342	45,080	23,166	3,096
Richland	20,043	11,785	7,603	83	258	314	15,383	9,338	5,546	66	203	230	13,662	8,470	4,961	231
St. Helena	10,920	4,527	6,031	39	134	189	8,463	3,805	4,371	28	109	150	8,321	3,628	4,565	128
*St. Tammany	11,961	10,197	789	68	249	658	9,455	8,155	586	43	182	489	8,917	8,022	526	369
*Tangipahoa	71,282	40,790	25,444	689	1,196	3,163	54,622	32,978	18,034	561	908	2,141	39,801	26,325	12,165	1,311
Tensas	4,147	1,744	2,312	23	26	42	3,235	1,446	1,728	12	23	26	3,455	1,503	1,917	35
Union	21,107	14,460	5,224	62	338	1,023	16,632	11,807	3,861	39	254	671	15,221	11,066	3,692	463
*Washington	44,602	29,153	13,411	214	715	1,109	34,280	23,120	9,722	152	546	740	26,988	18,251	8,099	638
West Carroll	9,751	7,894	1,425	27	180	225	7,532	6,223	1,010	20	136	143	7,038	5,913	1,040	85
West Feliciana	15,310	10,883	3,740	89	225	373	12,783	9,283	2,951	56	174	319	7,407	5,092	2,180	135
*Winn	13,384	8,465	3,512	207	245	955	10,619	6,825	2,536	169	189	900	8,104	5,883	2,102	119
District 5	776,311	460,674	269,293	9,173	12,984	24,187	598,033	368,273	194,712	7,068	9,841	18,139	482,295	310,955	157,337	14,003
	100.000%	59.341%	34.689%	1.182%	1.673%	3.116%	100.000%	61.581%	32.559%	1.182%	1.646%	3.033%	80.647%	64.474%	32.623%	2.903%
District 6																
*Ascension	107,009	76,039	19,005	2,185	1,855	7,925	77,617	56,907	12,831	1,428	1,291	5,160	67,477	53,234	10,390	3,853
*Assumption	12,119	8,723	2,582	69	200	545	9,531	7,051	1,941	38	153	348	8,101	6,141	1,804	156
*East Baton Rouge	359,161	188,657	126,228	15,924	4,307	24,045	282,045	157,366	92,073	12,201	3,418	16,987	217,711	133,849	69,283	14,579
*Iberville	6,967	4,493	2,164	28	101	181	5,624	3,708	1,656	23	89	148	5,252	3,392	1,774	86
*Lafourche	58,704	40,504	14,191	508	1,401	2,100	45,098	32,229	10,134	359	908	1,468	35,589	27,743	6,661	1,185
*Livingston	137,902	113,086	12,344	1,668	3,011	7,793	102,092	85,767	7,956	1,081	2,246	5,042	81,930	73,637	5,301	2,992
*Pointe Coupee	9,548	7,376	1,748	35	92	297	7,543	5,980	1,250	28	74	211	6,559	5,387	1,037	135
*St. Charles	18,860	13,252	3,226	362	343	1,677	14,218	10,362	2,224	243	232	1,157	12,563	9,750	1,959	854

Splits

Plan: 21ES-51 (Gadberry)

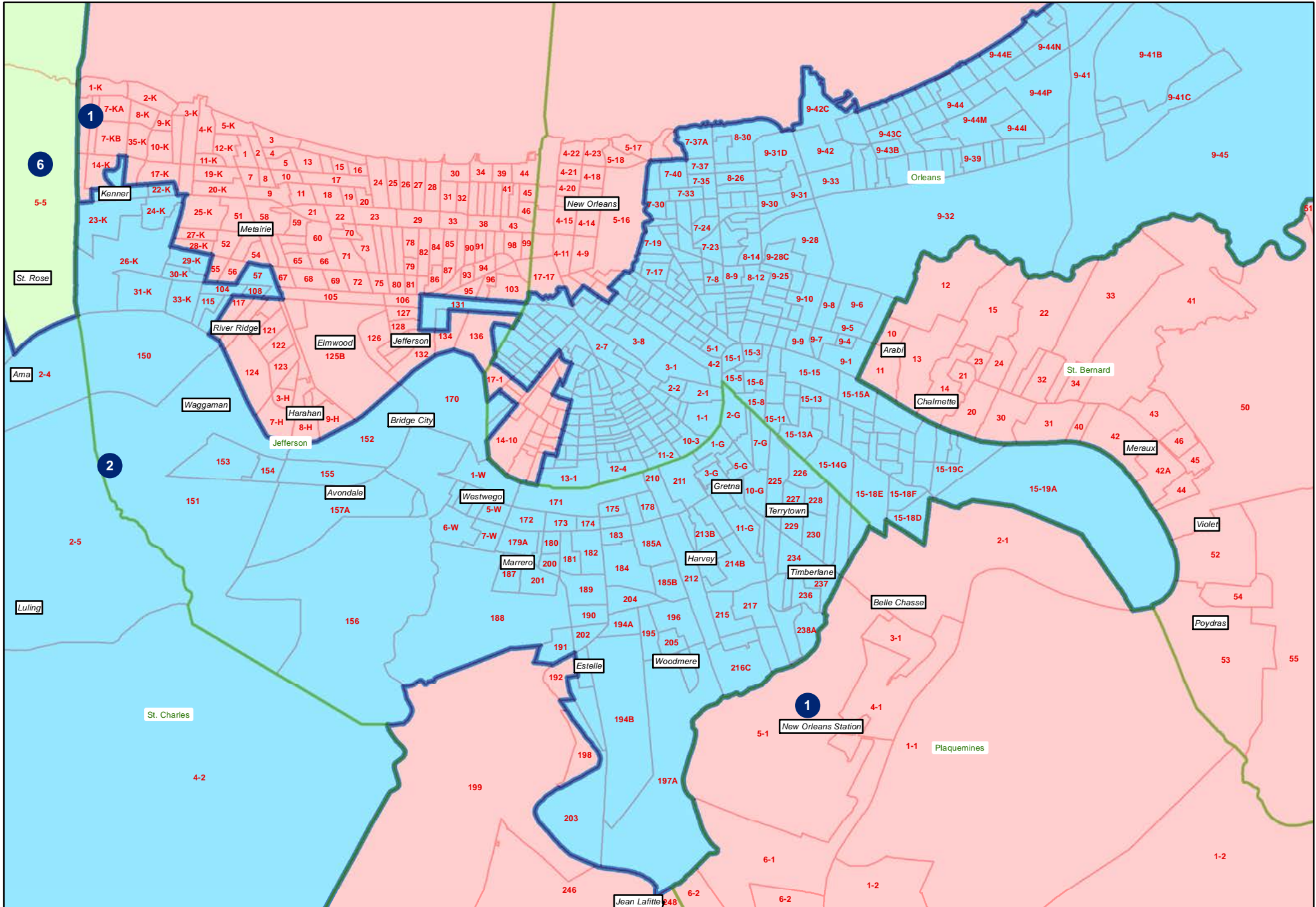
	Total Population	Total White	Total Black	Total Asian	Total American Indian	Total Other	VAP Total	VAP White	VAP Black	VAP Asian	VAP American Indian	VAP Other	Reg Total Dec 2021	Reg White Dec 2021	Reg Black Dec 2021	Reg Other Dec 2021
District 6																
*St. John the Baptist	9,799	5,044	3,639	159	162	795	7,677	4,259	2,606	140	115	557	6,480	3,937	2,125	418
*Terrebonne	39,913	26,524	8,585	692	1,988	2,124	29,908	20,859	5,842	477	1,320	1,410	22,333	16,904	4,064	1,365
*West Baton Rouge	16,345	10,118	5,066	196	211	754	12,504	7,864	3,795	147	135	563	10,281	7,125	2,939	217
District 6	776,327	493,816	198,778	21,826	13,671	48,236	593,857	392,352	142,308	16,165	9,981	33,051	474,276	341,099	107,337	25,840
	100.000%	63.609%	25.605%	2.811%	1.761%	6.213%	100.000%	66.068%	23.963%	2.722%	1.681%	5.565%	79.864%	71.920%	22.632%	5.448%

21ES-51 (Gadberry)
Statewide

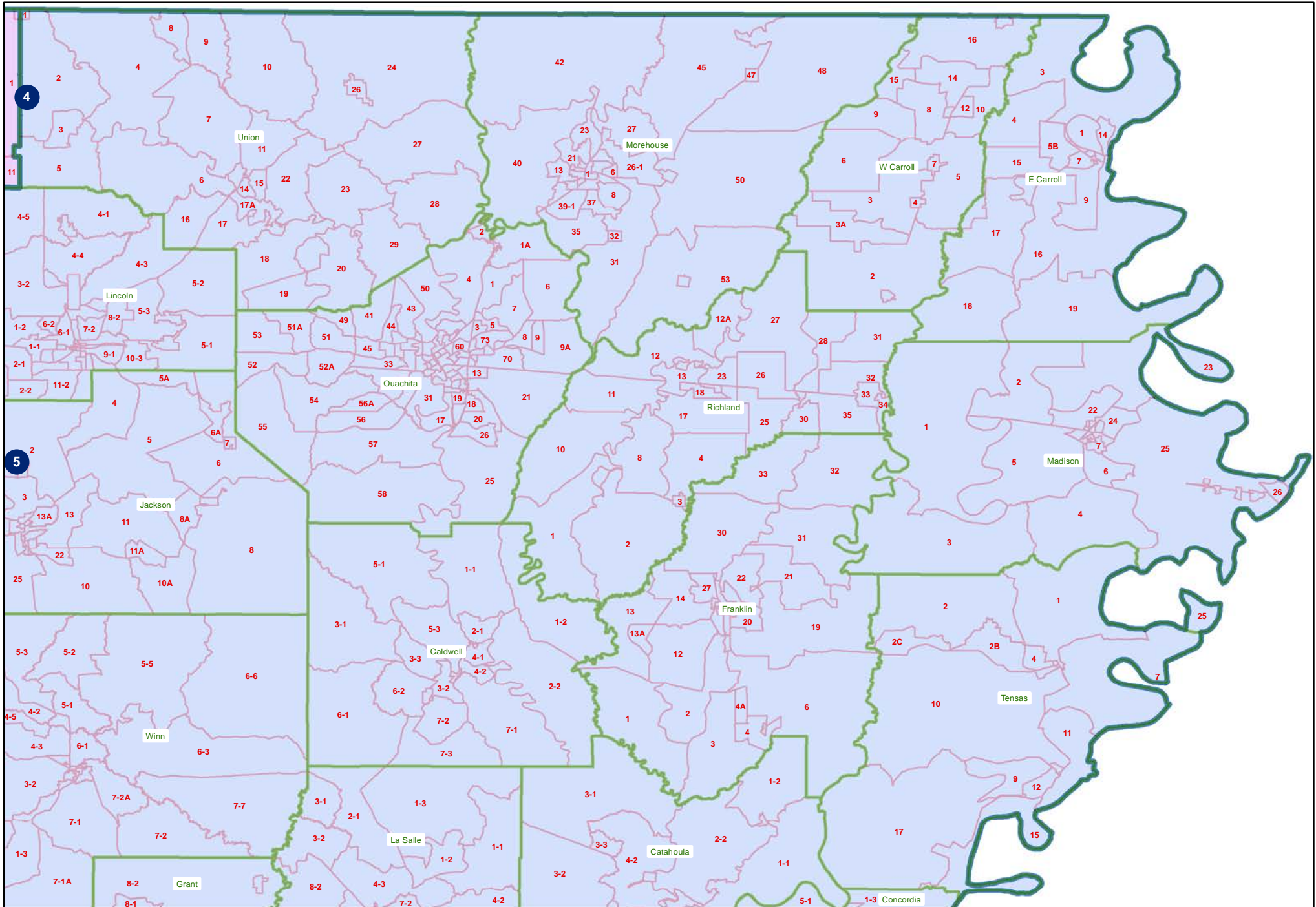


21ES-51 (Gadberry)

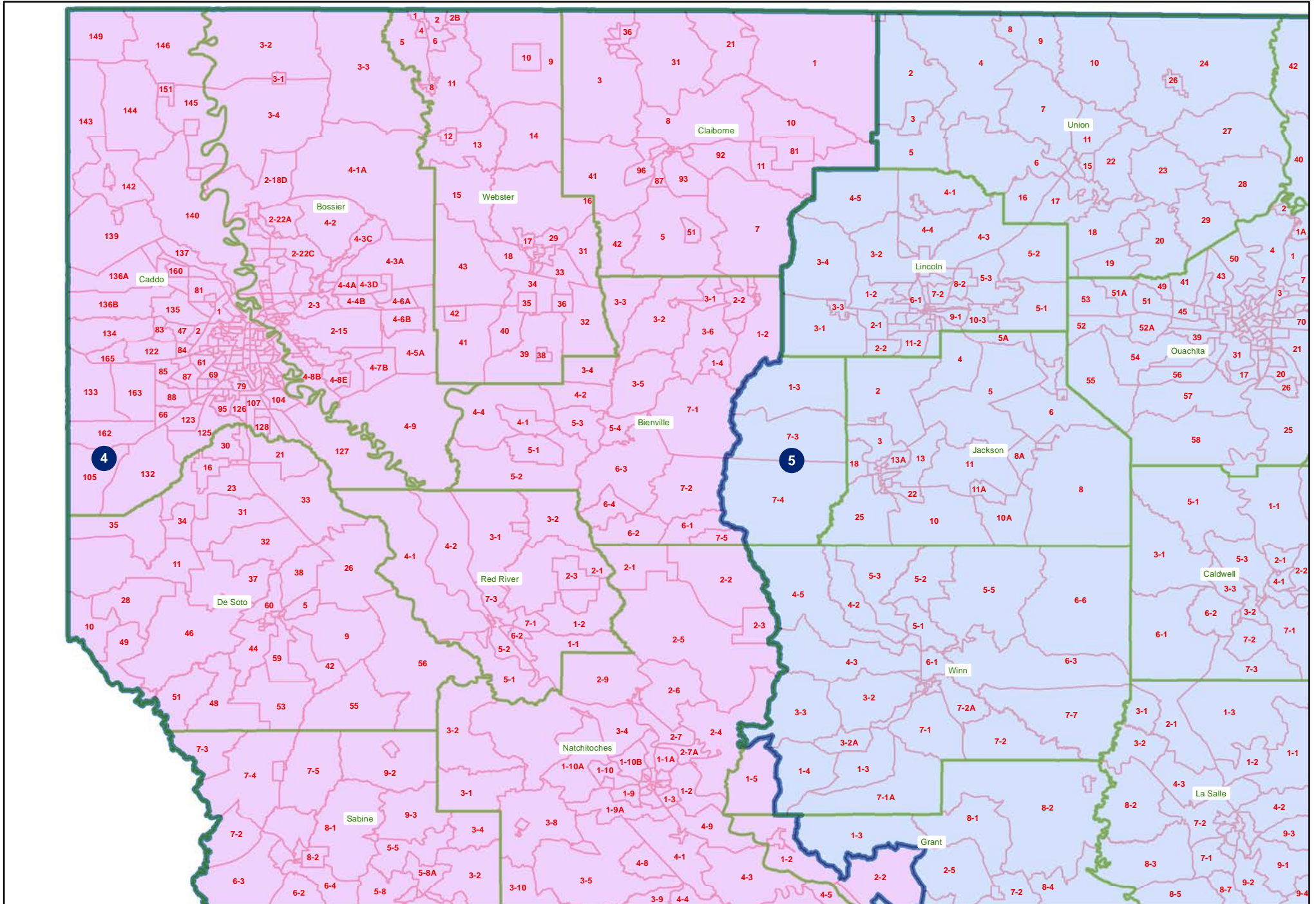
Jefferson/Orleans



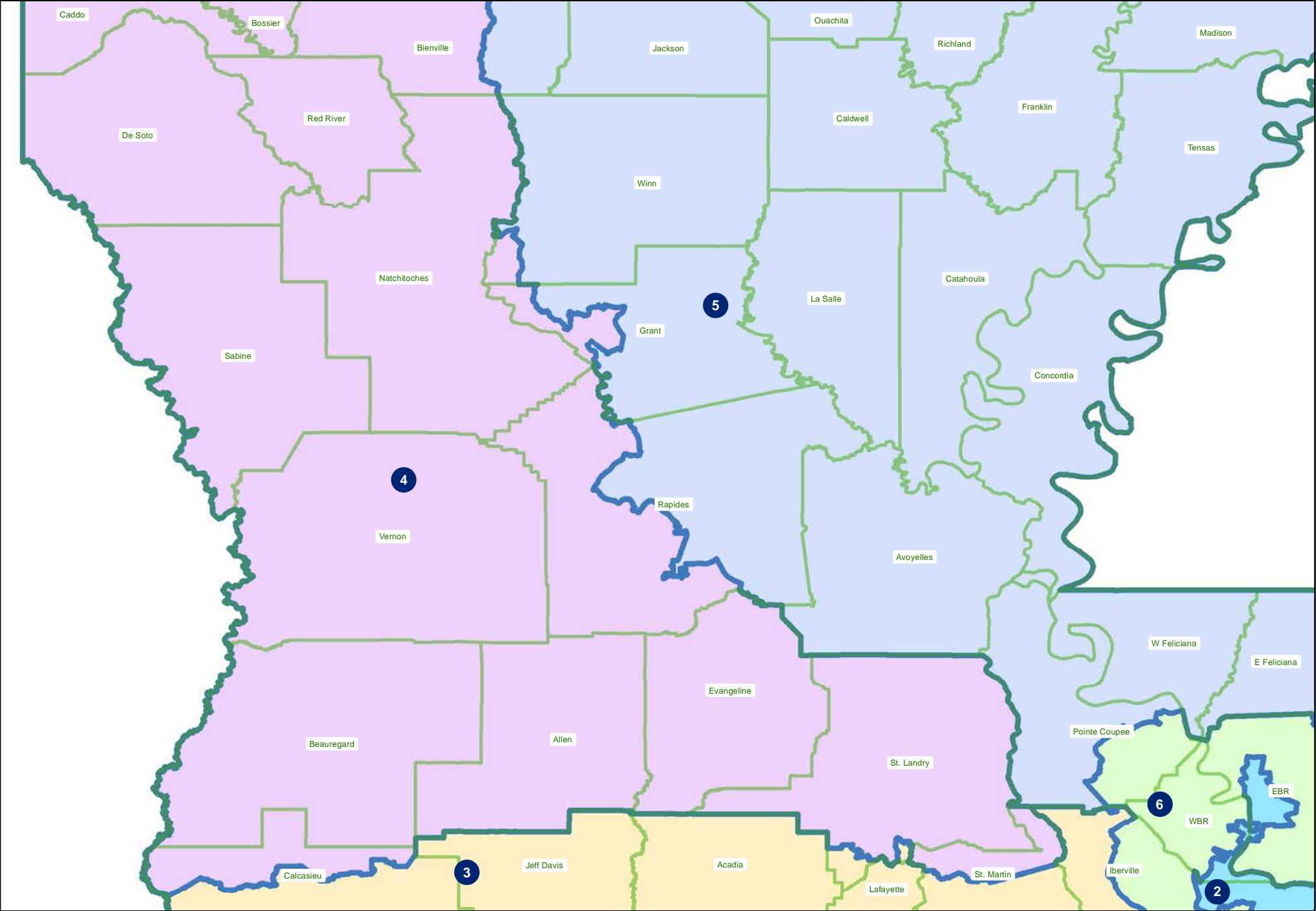
21ES-51 (Gadberry) Northeast



21ES-51 (Gadberry) Northwest

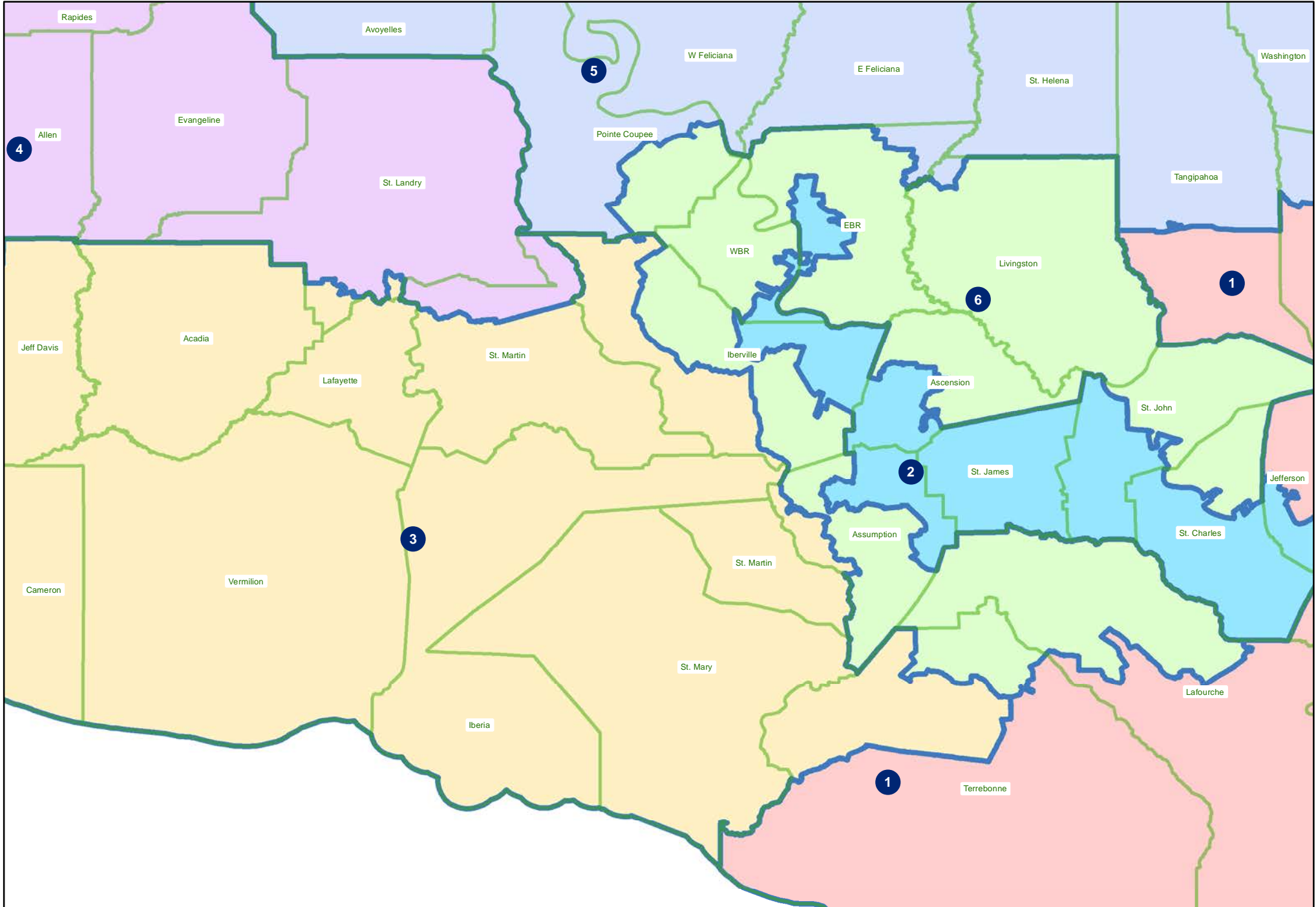


21ES-51 (Gadberry)
Central

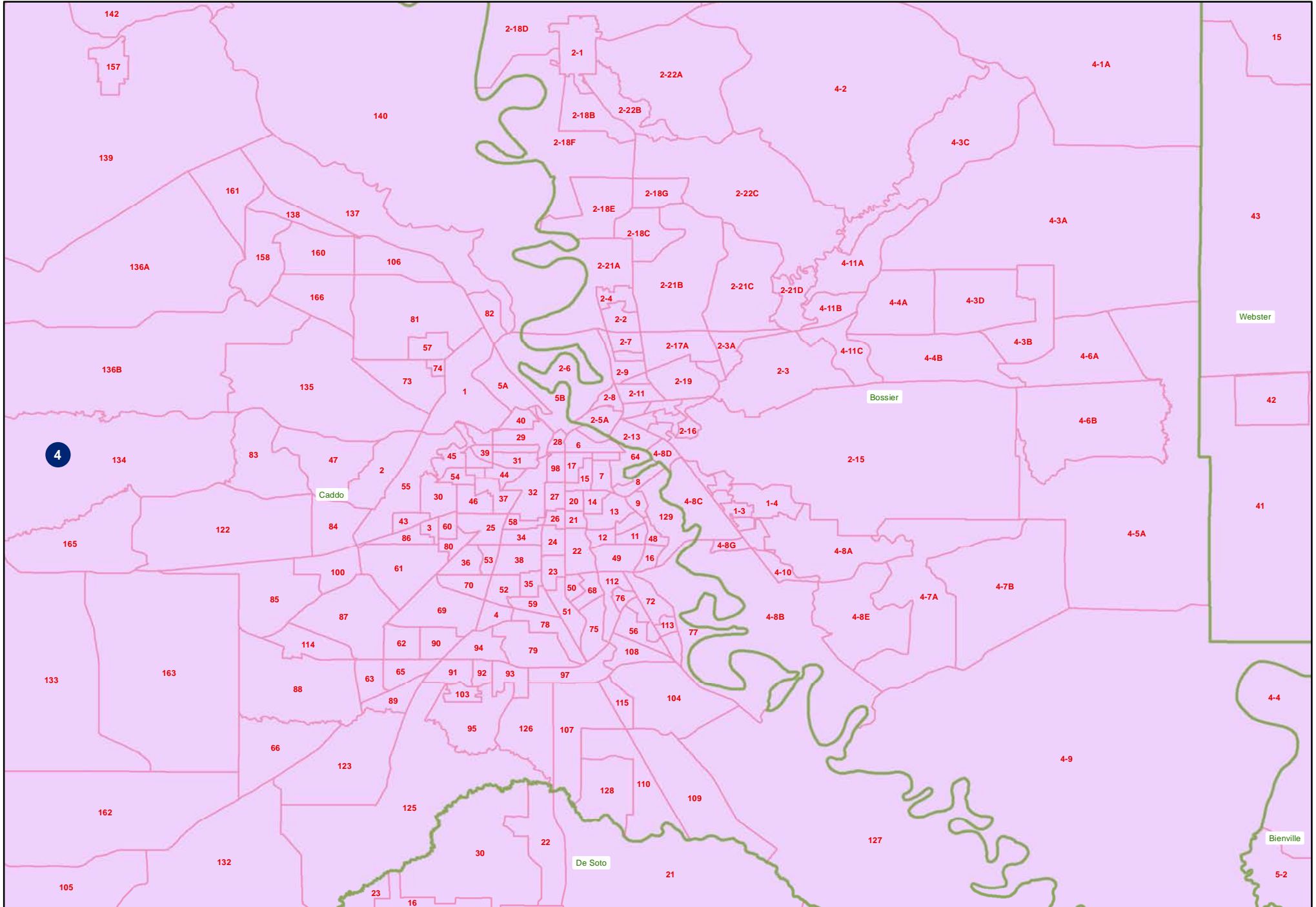


21ES-51 (Gadberry)

Acadiana

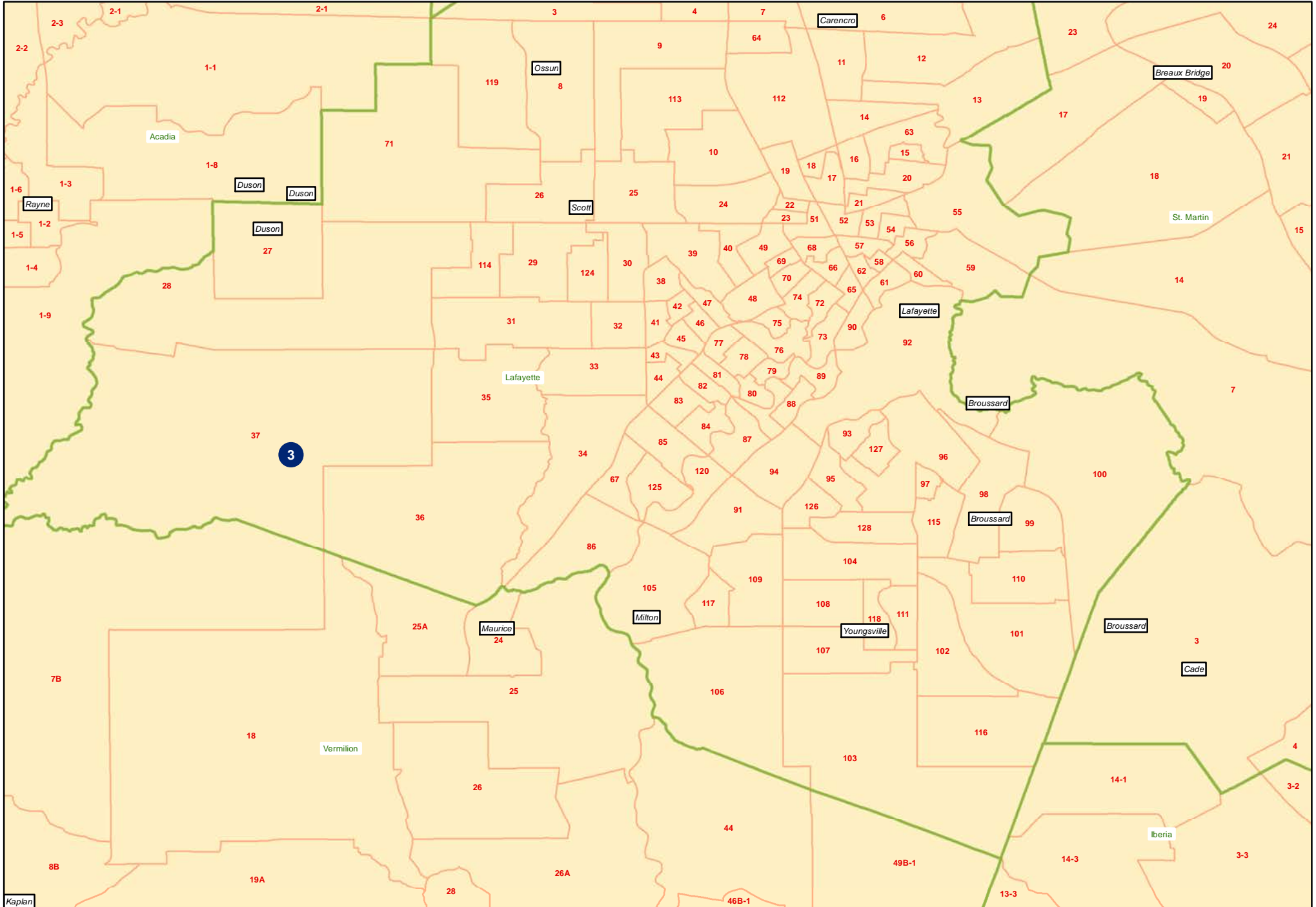


21ES-51 (Gadberry) Shreveport



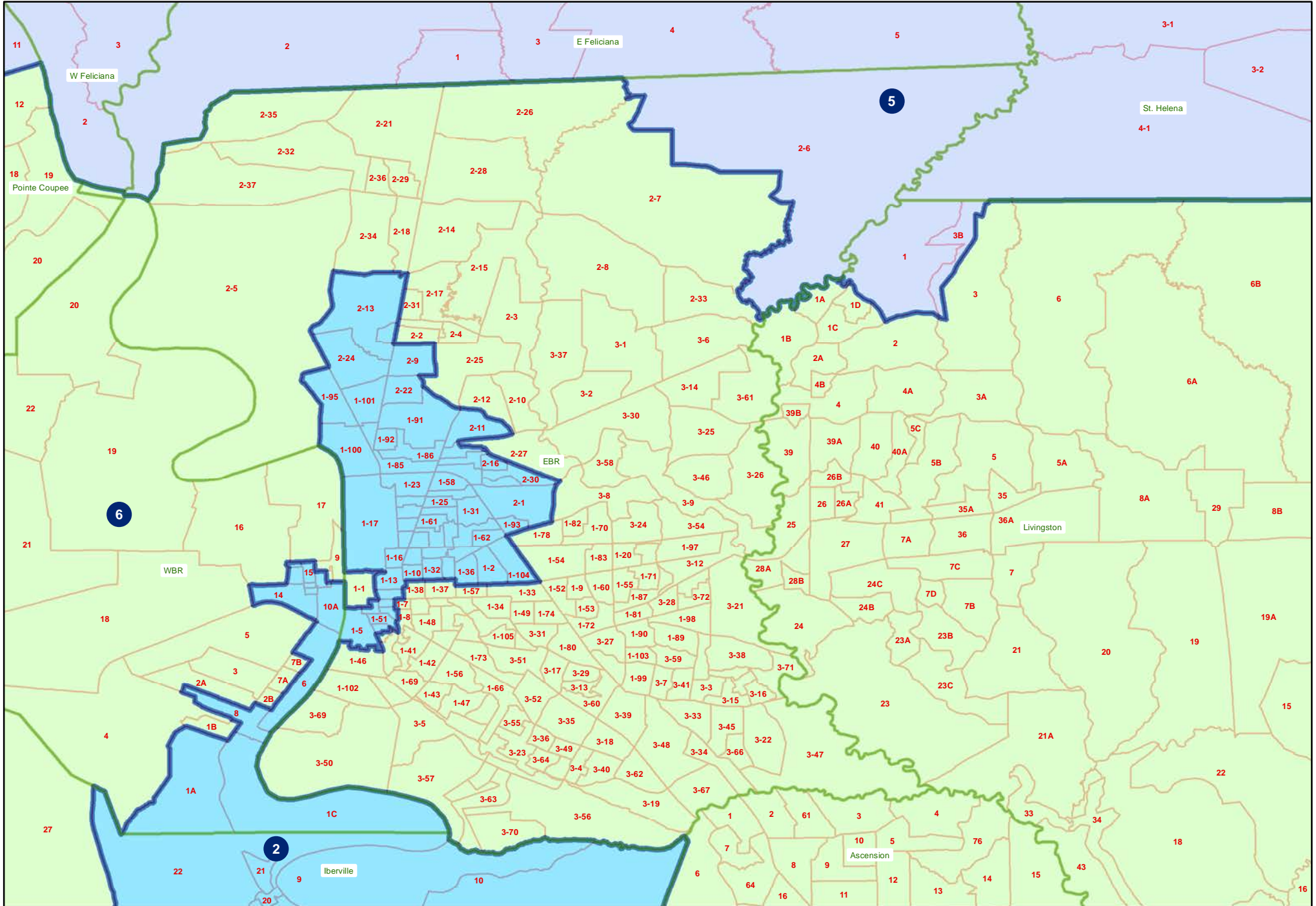
21ES-51 (Gadberry)

Lafayette



21ES-51 (Gadberry)

Baton Rouge



21ES-51 (Gadberry) Monroe

