

2022 First Extraordinary Session

HOUSE BILL NO. 4

BY REPRESENTATIVE MARCELLE

REAPPORTIONMENT/CONGRESS: Provides relative to the election districts for members of congress (Item #3)

1 AN ACT

2 To enact R.S. 18:1276 and to repeal R.S. 18:1276.1, relative to congressional districts; to  
3 provide for the redistricting of Louisiana's congressional districts; to provide with  
4 respect to positions and offices, other than congressional, which are based upon  
5 congressional districts; to provide for the effectiveness; and to provide for related  
6 matters.

7 Be it enacted by the Legislature of Louisiana:

8 Section 1. R.S. 18:1276 is hereby enacted to read as follows:

9 §1276. Congressional districts

10 Louisiana shall be divided into six congressional districts, and the qualified  
11 electors of each district shall elect one representative to the United States House of  
12 Representatives. The districts shall be composed as follows:

- 13 (1) District 1 is composed of Precincts 1-1, 1-3, 2-1, 2-3, 3-1, 3-2, 3-3, 4-1,
- 14 4-2, 4-4, 6-1, 6-3, 6-5, 7-1, 7-2, 7-4, 7-5, 8-2, 8-3, 9-1, 9-2, 9-4, 9-5, 10-1, 10-2, 11-2,
- 15 12-1, and 12-3 of Iberia Parish; Precincts 4, 5, 25, and 26 of Iberville Parish;
- 16 Precincts 1, 2, 3, 4, 5, 7, 8, 9, 10, 11, 12, 13, 14, 15, 16, 17, 18, 19, 20, 21, 22, 23, 24,
- 17 25, 26, 27, 28, 29, 30, 31, 32, 33, 34, 35, 36, 37, 38, 39, 40, 41, 42, 43, 44, 45, 46, 51,
- 18 52, 53, 54, 55, 56, 57, 58, 59, 60, 61, 62, 63, 64, 65, 66, 67, 68, 69, 70, 71, 72, 73, 74,
- 19 75, 76, 77, 78, 79, 80, 81, 82, 83, 84, 85, 86, 87, 88, 89, 90, 91, 92, 93, 94, 95, 96, 97,
- 20 98, 99, 100, 101, 102, 103, 105, 106, 117, 118, 119, 120, 121, 122, 123, 124, 125A,

1           125B, 126, 127, 128, 129, 130, 132, 134, 136, 138, 246, 247, 248, 1-GI, 1-H, 2-H,  
2           3-H, 4-H, 5-H, 6-H, 7-H, 8-H, 9-H, 1-K, 2-K, 3-K, 4-K, 5-K, 6-KA, 6-KB, 7-KA,  
3           7-KB, 8-K, 9-K, 10-K, 11-K, 12-K, 13-KA, 13-KB, 14-K, 15-K, 16-K, 17-K, 18-K,  
4           19-K, 20-K, 25-K, 27-K, 28-K, 34-K, 35-K, and 1-L of Jefferson Parish; Lafourche  
5           Parish; Precincts 3-14, 3-19, 3-20, 4-7, 4-8, 4-9, 4-11, 4-14, 4-15, 4-17, 4-17A, 4-18,  
6           4-20, 4-21, 4-22, 4-23, 5-11, 5-12, 5-13, 5-15, 5-16, 5-17, 5-18, 6-8, 6-9, 9-45,  
7           9-45A, 13-1, 13-2, 13-3, 13-4, 13-5, 13-6, 13-7, 13-8, 13-9, 13-10, 13-11, 13-12,  
8           13-13, 13-15, 13-16, 14-1, 14-2, 14-3, 14-4, 14-5, 14-6, 14-7, 14-8, 14-9, 14-10,  
9           14-11, 14-12, 14-13A, 14-14, 14-15, 14-16, 14-17, 14-18A, 14-19, 14-20, 14-21,  
10           16-1, 16-1A, 16-2, 16-3, 16-4, 16-5, 16-6, 16-7, 16-8, 17-1, 17-2, 17-17, 17-18,  
11           17-18A, 17-19, and 17-20 of Orleans Parish; Plaquemines Parish; Precincts 10, 11,  
12           12, 13, 14, 15, 20, 21, 22, 23, 24, 25, 30, 31, 32, 33, 34, 40, 41, 42, 42A, 43, 46, 51,  
13           52, 53, 54, and 55 of St. Bernard Parish; Precincts 1, 2, 3, 4, 5, 6, 7, 8, 9, 10, 11, 12,  
14           13, 14, 15, 16, 21, 22, 24, and 25 of St. Martin Parish; Precincts 2, 3, 4, 5, 6, 7, 8, 9,  
15           10, 11, 12, 13, 14, 15, 16, 17, 18, 19, 20, 21, 22, 23, 24, 25, 26, 27, 28, 29, 30, 31, 32,  
16           33, 34, 35, 36, 37, 38, 39, 40, 41, 43, and 45 of St. Mary Parish; Precincts 705, 805,  
17           806, 807, 808, 809, 810, 811, 812, 813, 814, 816, 817, 818, 905, 906, 909, 910, 911,  
18           912, 917, 918, 921, 922, S04, S05, S08, S11, S13, S15, S16, S17, S18, S20, S21,  
19           S22, S23, S24, and S25 of St. Tammany Parish; and Terrebonne Parish.  
20           (2) District 2 is composed of Precincts 6, 28, 30, 36, 37, 39, 40, 42, 44, 45,  
21           47, 48, 50, 51, 52, 53, 54, 55, 57, 65, and 66 of Ascension Parish; Assumption  
22           Parish; Precincts 1, 3, 6, 7, 9, 10, 11, 12, 13, 13C, 14, 14A, 15, 15B, 16, 17, 18, 19,  
23           20, 21, 22, 23, 24, 27, 28, 29, 31, and 32 of Iberville Parish; Precincts 104, 108, 115,  
24           116, 131, 133, 150, 151, 152, 153, 154, 155, 156, 157A, 157B, 170, 171, 172, 173,  
25           174, 175, 176, 177, 178, 179A, 179B, 180, 181, 182, 183, 184, 185A, 185B, 187,  
26           188, 189, 190, 191, 192, 193A, 193B, 194A, 194B, 195, 196, 197A, 197B, 198, 199,  
27           200, 201, 202, 203, 204, 205, 210, 211, 212, 213A, 213B, 213C, 214A, 214B, 215,  
28           216A, 216B, 216C, 217, 225, 226, 227, 228, 229, 230, 231, 232A, 232B, 234, 235,  
29           236, 237, 238A, 238B, 1-G, 2-G, 3-G, 4-G, 5-G, 6-G, 7-G, 8-G, 9-G, 10-G, 11-G,

1 12-G, 13-G, 21-K, 22-K, 23-K, 24-K, 26-K, 29-K, 30-K, 31-K, 33-K, 1-W, 2-W,  
2 3-W, 4-W, 5-W, 6-W, and 7-W of Jefferson Parish; Precincts 4, 5, 7, 11, 13, 14, 15,  
3 16, 17, 18, 19, 20, 21, 22, 23, 24, 51, 52, 53, 54, 55, 56, 57, 58, 59, 60, 61, 62, 63, 64,  
4 68, and 112 of Lafayette Parish; Precincts 1-1, 1-2, 1-5, 1-6, 2-1, 2-2, 2-4, 2-6, 2-7,  
5 3-1, 3-8, 3-9, 3-12, 3-15, 3-18, 4-2, 4-3, 4-5, 4-6, 5-1, 5-2, 5-3, 5-5, 5-7, 5-8, 5-9,  
6 5-10, 6-1, 6-2, 6-4, 6-6, 6-7, 7-1, 7-2, 7-4, 7-5, 7-6, 7-7, 7-8, 7-9A, 7-10, 7-11, 7-12,  
7 7-13, 7-14, 7-15, 7-16, 7-17, 7-18, 7-19, 7-20, 7-21, 7-23, 7-24, 7-25, 7-25A, 7-26,  
8 7-27, 7-27B, 7-28, 7-28A, 7-29, 7-30, 7-32, 7-33, 7-35, 7-37, 7-37A, 7-40, 7-41,  
9 7-42, 8-1, 8-2, 8-4, 8-6, 8-7, 8-8, 8-9, 8-12, 8-13, 8-14, 8-15, 8-19, 8-20, 8-21, 8-22,  
10 8-23, 8-24, 8-25, 8-26, 8-27, 8-28, 8-30, 9-1, 9-3, 9-4, 9-5, 9-6, 9-7, 9-8, 9-9, 9-10,  
11 9-11, 9-12, 9-13, 9-14, 9-15, 9-16, 9-17, 9-19, 9-21, 9-23, 9-25, 9-26, 9-28, 9-28C,  
12 9-29, 9-30, 9-30A, 9-31, 9-31A, 9-31B, 9-31D, 9-32, 9-33, 9-34A, 9-35, 9-35A,  
13 9-36, 9-36B, 9-37, 9-38, 9-38A, 9-39, 9-39B, 9-40, 9-40A, 9-40C, 9-41, 9-41A,  
14 9-41B, 9-41C, 9-41D, 9-42, 9-42C, 9-43A, 9-43B, 9-43C, 9-43E, 9-43F, 9-43G,  
15 9-43H, 9-43I, 9-43J, 9-43K, 9-43L, 9-43M, 9-43N, 9-44, 9-44A, 9-44B, 9-44D,  
16 9-44E, 9-44F, 9-44G, 9-44I, 9-44J, 9-44L, 9-44M, 9-44N, 9-44O, 9-44P, 9-44Q,  
17 10-3, 10-6, 10-7, 10-8, 10-9, 10-11, 10-12, 10-13, 10-14, 11-2, 11-3, 11-4, 11-5,  
18 11-8, 11-9, 11-10, 11-11, 11-12, 11-13, 11-14, 11-17, 12-1, 12-2, 12-3, 12-4, 12-5,  
19 12-6, 12-7, 12-8, 12-9, 12-10, 12-11, 12-12, 12-13, 12-14, 12-16, 12-17, 12-19,  
20 13-14, 14-23, 14-24A, 14-25, 14-26, 15-1, 15-2, 15-3, 15-5, 15-6, 15-8, 15-9, 15-10,  
21 15-11, 15-12, 15-12A, 15-13, 15-13A, 15-13B, 15-14, 15-14A, 15-14B, 15-14C,  
22 15-14D, 15-14E, 15-14F, 15-14G, 15-15, 15-15A, 15-15B, 15-16, 15-17, 15-17A,  
23 15-17B, 15-18, 15-18A, 15-18B, 15-18C, 15-18D, 15-18E, 15-18F, 15-19, 15-19A,  
24 15-19B, 15-19C, 16-9, 17-3, 17-4, 17-5, 17-6, 17-7, 17-8, 17-9, 17-10, 17-11, 17-12,  
25 17-13, 17-13A, 17-14, 17-15, and 17-16 of Orleans Parish; Precincts 44, 45 and 50  
26 of St. Bernard Parish; St. Charles Parish; St. James Parish; St. John the Baptist  
27 Parish; Precincts 17, 18, 19, 20, 23, 27, 28, and 29 of St. Martin Parish; and Precincts  
28 42 and 44 of St. Mary Parish.

1           (3) District 3 is composed of Acadia Parish; Allen Parish; Precincts 1-1, 1-2,  
2           1-3, 2-3A, 2-5E, and 5-1 of Avoyelles Parish; Beauregard Parish; Calcasieu Parish;  
3           Cameron Parish; Precincts 1020, 1030, 1040, 1041, 1130, 1140, 1161, 1171, 2010,  
4           2010A, 2020, 2030, 2040, 3010, 3020, 3030, 3031, 3032, 3040, 3050, 3051, 3052,  
5           3060, 3070, 3071, 4001, 4010, 4011, 4012, 4020, 4021, 4030, 4040, 5004, 5010,  
6           5020, 5030, 5040, 5041, and 5050 of Evangeline Parish; Precincts 4-3, 5-4, 10-3,  
7           10-4, 10-7, 13-1, 13-3, 14-1, and 14-3 of Iberia Parish; Jefferson Davis Parish;  
8           Precincts 25, 26, 27, 28, 29, 30, 31, 32, 33, 34, 35, 36, 37, 38, 39, 40, 41, 42, 43, 44,  
9           45, 46, 47, 48, 49, 65, 66, 67, 69, 70, 71, 72, 73, 74, 75, 76, 77, 78, 79, 80, 81, 82, 83,  
10           84, 85, 86, 87, 88, 89, 90, 91, 92, 93, 94, 95, 96, 97, 98, 99, 100, 101, 102, 103, 104,  
11           105, 106, 107, 108, 109, 110, 111, 114, 115, 116, 117, 118, 119, 120, 121, 124, 125,  
12           126, 127, and 128 of Lafayette Parish; Precincts C22, C23, C31, C32, C33, C34,  
13           C35, C36, C37-A, C37-B, C41, C42, N6, N7, N11, N12, N13-A, N13-B, N14-A,  
14           N14-B, N15, N16, N17, N18-A, N18-B, N19, N20, N21, N22, N23, N24, N25, N26,  
15           N27, N28, N29, S1, S2, S4, S5, S6A, S6B, S7, S8, S9, S10, S11, S13, S14, S16, S21,  
16           S22, S23, S24, S25, S26, S27, S28, and S29 of Rapides Parish; Precincts 1-1, 1-2,  
17           1-3, 2-1, 2-2, 2-2A, 2-3, 2-4, 2-4A, 2-5, 2-6, and 5-3 of Sabine Parish; Precinct 1 of  
18           St. Mary Parish; Vermilion Parish; and Vernon Parish.

19           (4) District 4 is composed of Bienville Parish; Bossier Parish; Caddo Parish;  
20           Caldwell Parish; Precincts 1-1, 1-3, 1-4, 2-2, 3-1, 3-2, 3-3, 3-4, 4-1, 4-2, 5-1, 6-1,  
21           6-2, 9-1, 9-2, 9-3, and 9-4 of Catahoula Parish; Claiborne Parish; Precinct 5-6 of  
22           Concordia Parish; De Soto Parish; Precincts 1, 2, 3, 4A, 12, 13, and 13A of Franklin  
23           Parish; Grant Parish; Jackson Parish; La Salle Parish; Lincoln Parish; Precincts 23,  
24           27, 40, 42, 45, 47, and 48 of Morehouse Parish; Natchitoches Parish; Precincts 1, 1A,  
25           2, 4, 6, 31, 32, 33, 35, 36, 37, 38, 39, 40, 41, 42, 43, 44, 44A, 45, 46, 48, 49, 50, 51,  
26           51A, 52, 52A, 53, 54, 55, 56, 56A, 57, 58, 61, 64, 71, 75, 77, and 78 of Ouachita  
27           Parish; Red River Parish; Precincts 1, 2, 3, and 8 of Richland Parish; Precincts 2-6A,  
28           3-2, 3-4, 3-6, 3-6A, 3-7, 3-7B, 3-7X, 4-1, 5-5, 5-8, 5-8A, 6-2, 6-3, 6-4, 6-4A, 6-4B,

1        7-1, 7-2, 7-3, 7-4, 7-5, 8-1, 8-1A, 8-2, 9-1, 9-2, and 9-3 of Sabine Parish; Union  
2        Parish; Webster Parish; West Carroll Parish; and Winn Parish.

3                (5) District 5 is composed of Precincts 2-1, 2-2, 2-2A, 2-2B, 2-2C, 2-2D,  
4        2-2F, 2-4, 2-4A, 2-5, 2-7, 2-8, 3-1, 3-1B, 3-3, 4-1, 4-2, 4-2A, 5-1A, 6-1A, 6-2, 6-2A,  
5        7-1, 7-3, 7-3B, 8-1, 8-2A, 8-2B, 8-3, 8-3A, 9-1A, 9-2, 9-2A, 9-3, 9-4, 9-4B, 9-5B,  
6        10-2, 10-2A, 10-3A, 10-4, 11-1, and 11-2A of Avoyelles Parish; Precincts 1-2, 2-1,  
7        6-3, 6-5, 7-1, 7-3, 7-5, and 8-1 of Catahoula Parish; Precincts 1-1, 1-2, 1-3, 1-4, 2-1,  
8        3-1, 3-2, 3-3, 3-4, 4-1, 4-2, 4-3, 4-4, 5-1, 5-2, 5-2B, 5-3, 5-4, and 5-5 of Concordia  
9        Parish; Precincts 1-1, 1-2, 1-3, 1-4, 1-5, 1-6, 1-9, 1-10, 1-11, 1-13, 1-14, 1-15, 1-16,  
10        1-17, 1-18, 1-19, 1-20, 1-21, 1-22, 1-23, 1-24, 1-25, 1-26, 1-27, 1-28, 1-29, 1-30,  
11        1-31, 1-32, 1-33, 1-36, 1-37, 1-38, 1-45, 1-46, 1-50, 1-51, 1-54, 1-55, 1-57, 1-58,  
12        1-60, 1-61, 1-62, 1-63, 1-67, 1-68, 1-70, 1-71, 1-72, 1-76, 1-77, 1-78, 1-81, 1-82,  
13        1-83, 1-84, 1-85, 1-86, 1-87, 1-88, 1-90, 1-91, 1-92, 1-93, 1-94, 1-95, 1-97, 1-98,  
14        1-100, 1-101, 1-102, 1-103, 1-104, 1-107, 2-1, 2-2, 2-3, 2-4, 2-5, 2-9, 2-10, 2-11,  
15        2-12, 2-13, 2-14, 2-15, 2-16, 2-17, 2-18, 2-19, 2-20, 2-21, 2-22, 2-23, 2-24, 2-25,  
16        2-26, 2-27, 2-28, 2-29, 2-30, 2-31, 2-32, 2-34, 2-35, 2-36, 2-37, 3-5, 3-8, 3-10, 3-11,  
17        3-12, 3-20, 3-21, 3-23, 3-24, 3-27, 3-28, 3-32, 3-44, 3-50, 3-54, 3-55, 3-56, 3-57,  
18        3-58, 3-63, 3-65, 3-69, 3-70, and 3-72 of East Baton Rouge Parish; East Carroll  
19        Parish; East Feliciana Parish; Precincts 1010, 1031, 1050, 1060, 1080, 1081, 1090,  
20        1091, 1100, 1101, 1110, 1120, 1150, 1160, 1162, and 1170 of Evangeline Parish;  
21        Precincts 4, 4B, 6, 14, 16, 18, 19, 20, 21, 22, 24, 26, 27, 30, 31, 32, and 33 of  
22        Franklin Parish; Precincts 1, 2, 3, 6, 8, 9, 10, 12, 113, 122, and 123 of Lafayette  
23        Parish; Madison Parish; Precincts 1, 3-1, 6, 7, 8, 12, 13, 14, 16, 20, 21, 24, 26-1, 29,  
24        31, 32, 35, 37, 39-1, 39-2, 50, 53, and 54 of Morehouse Parish; Precincts 3, 5, 7, 8,  
25        9, 9A, 10, 11, 12, 13, 14, 15, 16, 17, 18, 19, 20, 21, 22, 23, 24, 25, 26, 27, 27A, 28,  
26        29, 30, 34, 47, 59, 60, 62, 63, 65, 65A, 66, 67, 68, 69, 70, 72, 73, 74, 76, and 79 of  
27        Ouachita Parish; Pointe Coupee Parish; Precincts C1, C2, C3, C4, C5, C6, C7, C8,  
28        C9, C10, C11-A, C11-B, C13, C14, C15, C17, C18, C19, C20, C21, C24, C25, C26,  
29        C27, C28, C30, C38-A, C38-B, C39, C40, N1, N2, N3, N4, N5, N8, N9, N10, S15,

1 S17, S18, S19, and S20 of Rapides Parish; Precincts 4, 10, 11, 12, 12A, 13, 17, 18,  
 2 23, 25, 26, 27, 28, 30, 31, 32, 33, 34, and 35 of Richland Parish; St. Helena Parish;  
 3 St. Landry Parish; Precinct 26 of St. Martin Parish; Precincts 1, 2, 6, 11, 15, 16, 17,  
 4 18, 26, 27, 101, 102, 104A, 105, 107, 109, 111A, and 115B of Tangipahoa Parish;  
 5 Tensas Parish; West Baton Rouge Parish; and West Feliciana Parish.

6 (6) District 6 is composed of Precincts 1, 2, 3, 4, 5, 7, 8, 9, 10, 11, 12, 13, 14,  
 7 15, 16, 17, 18, 20, 21, 22, 23, 24, 25, 26, 27, 31, 32, 33, 34, 35, 41, 43, 58, 61, 62, 63,  
 8 64, 71, 72, 73, 76, 77, and 78 of Ascension Parish; Precincts 1-7, 1-8, 1-12, 1-34,  
 9 1-35, 1-39, 1-40, 1-41, 1-42, 1-43, 1-44, 1-47, 1-48, 1-49, 1-52, 1-53, 1-56, 1-59,  
 10 1-64, 1-65, 1-66, 1-69, 1-73, 1-74, 1-75, 1-79, 1-80, 1-89, 1-99, 1-105, 2-6, 2-7, 2-8,  
 11 2-33, 3-1, 3-2, 3-3, 3-4, 3-6, 3-7, 3-9, 3-13, 3-14, 3-15, 3-16, 3-17, 3-18, 3-19, 3-22,  
 12 3-25, 3-26, 3-29, 3-30, 3-31, 3-33, 3-34, 3-35, 3-36, 3-37, 3-38, 3-39, 3-40, 3-41,  
 13 3-43, 3-45, 3-46, 3-47, 3-48, 3-49, 3-51, 3-52, 3-53, 3-59, 3-60, 3-61, 3-62, 3-64,  
 14 3-66, 3-67, 3-68, and 3-71 of East Baton Rouge Parish; Livingston Parish; Precincts  
 15 101, 102, 103, 104, 105, 106, 107, 108, 110, 111, 112, 113, 114, 115, 116, 118, 201,  
 16 202, 203, 204, 205, 206, 207, 301, 302, 303, 304, 305, 306, 307, 308, 309, 310, 312,  
 17 313, 314, 401, 402, 403, 404, 405, 406, 407, 408, 409, 410, 411, 412, 413, 414, 415,  
 18 416, 417, 418, 419, 420, 421, 422, 426, 427, 429, 430, 501, 502, 503, 504, 505, 601,  
 19 602, 603, 604, 605, 606, 609, 701, 702, 703, 704, 706, 801, 802, 803, 804, 815, 901,  
 20 902, 903, 904, 907, 913, 914, 915, 916, A01, A02, A03, A04, C01, C02, C03, C04,  
 21 C05, C06, C07, C08, C09, C10, C11, F01, M01, M02, M03, M04, M05, M06, M07,  
 22 M08, M09, M10, M11, M12, MD1, P01, S01, S02, S03, S06, S07, S09, S10, and S19  
 23 of St. Tammany Parish; Precincts 28, 33, 40, 40A, 41, 42, 42A, 43, 44, 45, 45A, 46,  
 24 47, 48, 49, 70, 70A, 71, 72, 72A, 73, 74, 104, 106, 106A, 108, 110, 112, 114, 116,  
 25 117, 118, 119, 120, 120A, 120B, 121, 121A, 122, 122A, 122B, 123, 124, 124A, 125,  
 26 127, 127A, 129, 129A, 133, 133A, 137, 137A, 137B, 137C, 137D, 139, 141, 141A,  
 27 143, 143A, 145, 147, 149, 149A, and 151 of Tangipahoa Parish; and Washington  
 28 Parish.

29 Section 2. R.S. 18:1276.1 is hereby repealed in its entirety.

1 Section 3.(A) The precincts referenced in this Act are those precincts identified as  
2 Voting Districts (VTDs) in the 2020 Census Redistricting TIGER/Line Shapefiles for the  
3 State of Louisiana as validated through the data verification program of the Louisiana House  
4 of Representatives and the Louisiana Senate and available on the legislature's website on the  
5 effective date of this Section.

6 (B) When a precinct referenced in this Act has been subdivided by action of the  
7 parish governing authority on a nongeographic basis or subdivided by action of the parish  
8 governing authority on a geographic basis in accordance with the provisions of R.S.  
9 18:532.1, the enumeration in this Act of the general precinct designation shall include all  
10 nongeographic and all geographic subdivisions thereof, however such subdivisions may be  
11 designated.

12 (C) The territorial limits of the districts as provided in this Act shall continue in  
13 effect until changed by law regardless of any subsequent change made to the precincts by  
14 the parish governing authority.

15 Section 4. The provisions of this Act shall not reduce the term of office of any  
16 person holding any position or office on the effective date of this Section for which the  
17 appointment or election is based upon a congressional district as composed pursuant to R.S.  
18 18:1276.1. Any position or office that is filled by appointment or election based on a  
19 congressional district and that is to be filled after January 3, 2023, shall be appointed or  
20 elected from a district as it is described in Section 1 of this Act.

21 Section 5.(A) Solely for the purposes of qualifying for election and the election of  
22 representatives to the United States Congress at the regularly scheduled election for  
23 representatives to the congress in 2022, the provisions of Section 1 of this Act shall become  
24 effective upon signature of this Act by the governor or, if not signed by the governor, upon  
25 expiration of the time for bills to become law without signature by the governor, as provided  
26 in Article III, Section 18 of the Constitution of Louisiana. If this Act is vetoed by the  
27 governor and subsequently approved by the legislature, the provisions of Section 1 of this  
28 Act shall become effective on the day following such approval for the purposes established  
29 in this Subsection.

1 (B) For subsequent elections of representatives to the United States Congress and  
2 for all other purposes, the provisions of Section 1 of this Act shall become effective at noon  
3 on January 3, 2023.

4 (C) The provisions of Section 2 of this Act shall become effective at noon on  
5 January 3, 2023.

6 (D) The provisions of this Section and Sections 3 and 4 of this Act shall become  
7 effective upon signature of this Act by the governor or, if not signed by the governor, upon  
8 expiration of the time for bills to become law without signature by the governor, as provided  
9 in Article III, Section 18 of the Constitution of Louisiana. If this Act is vetoed by the  
10 governor and subsequently approved by the legislature, the provisions of this Section and  
11 Sections 3 and 4 of this Act shall become effective on the day following such approval.

---

#### DIGEST

The digest printed below was prepared by House Legislative Services. It constitutes no part of the legislative instrument. The keyword, one-liner, abstract, and digest do not constitute part of the law or proof or indicia of legislative intent. [R.S. 1:13(B) and 24:177(E)]

---

HB 4 Original

2022 First Extraordinary Session

Marcelle

**Abstract:** Provides for the redistricting of the state's congressional districts and provides for the composition of each of the six congressional districts. Effective for election purposes only for the regular congressional elections in 2022 and for all other purposes at noon on Jan. 3, 2023.

Statistical summaries of proposed law, including district variances from the ideal population of 776,292 and the range of those variances, as well as maps illustrating proposed district boundaries accompany this digest. (*Attached to the bill version on the internet.*)

Present U.S. Constitution (14th Amendment) provides that representatives in congress shall be apportioned among the several states according to their respective numbers, counting the whole number of persons in each state. The U.S. Supreme Court has held that the population of congressional districts in the same state must be as nearly equal in population as practicable.

Proposed law redraws district boundaries for the six congressional districts, effective upon signature of governor or lapse of time for gubernatorial action for purposes of the 2022 election.

Proposed law retains present districts until noon on January 3, 2023, at which time present law is repealed and proposed districts are effective for all other purposes.

Proposed law specifies that precincts referenced in district descriptions are those precincts identified as Voting Districts (VTDs) in the 2020 Census Redistricting TIGER/Line Shapefiles for the state of La. as validated through the data verification program of the La. legislature. Also specifies that if any such precinct has been subdivided by action of the



parish governing authority on a nongeographic basis or subdivided by action of the parish governing authority on a geographic basis in accordance with present law, the enumeration of the general precinct designation shall include all nongeographic and all geographic subdivisions thereof. Further provides that the territorial limits of the districts as enacted shall continue in effect until changed by law regardless of any subsequent change made to the precincts by the parish governing authority.

Proposed law specifies that proposed law does not reduce the term of office of any person holding any position or office on the effective date of proposed law for which the appointment or election is based upon a congressional district as composed pursuant to present law. Specifies that any position or office filled after Jan. 3, 2023, for which the appointment or election is based on a congressional district shall be appointed or elected from a district as it is described in proposed law.

Population data in the summaries accompanying this digest are derived from 2020 Census Redistricting Data (Public Law 94-171), Summary File for Louisiana. Population data, statistical information, and maps are supplied for purposes of information and analysis and comprise no part of proposed law.

Effective for election purposes only for the regular congressional elections in 2022; effective for all other purposes at noon on January 3, 2023.

(Adds R.S. 18:1276; Repeals R.S. 18:1276.1)

# Plan Statistics

Plan: 221ES-23 (Gaines)

<u>Districts:</u>	<u># of Members</u>	<u>Actual Population</u>	<u>Ideal Population</u>	<u>Absolute Deviation</u>	<u>Relative Deviation</u>
District 1	1	776,316	776,292	24	0.003%
District 2	1	776,154	776,292	-138	-0.018%
District 3	1	776,406	776,292	114	0.015%
District 4	1	776,258	776,292	-34	-0.004%
District 5	1	776,149	776,292	-143	-0.018%
District 6	1	776,474	776,292	182	0.023%
<b>Grand Total:</b>	<b>6</b>	<b>4,657,757</b>	<b>4,657,752</b>		

Ideal Population Per Member: 776292  
 Number of Districts for Plan Type: 6

Range of District Populations: 776,149 to 776,474

Absolute Mean Deviation: 54  
 Absolute Range: -143 to 182  
 Absolute Overall Range: 325

Relative Mean Deviation: 0.01%  
 Relative Range: -0.02% to 0.02%  
 Relative Overall Range: 0.04%

<b><i>Ideal - Actual:</i></b>	<b>-5</b>
<b><i>Remainder:</i></b>	<b>5</b>
<b><i>Unassigned Population:</i></b>	<b>0</b>

# Total Population

Plan: 221ES-23 (Gaines)

	Total Population	Total White	Total Black	Total Asian	Total American Indian	Total Other	Total Hispanic	VAP Total	VAP White	VAP Black	VAP Asian	VAP American Indian	VAP Other	VAP Hispanic Total
District 1	776,316	504,611	152,441	24,493	23,450	71,321	89,992	603,551	409,871	108,070	18,229	16,455	50,926	63,499
	100.000%	65.001%	19.636%	3.155%	3.021%	9.187%	11.592%	100.000%	67.910%	17.906%	3.020%	2.726%	8.438%	10.521%
District 2	776,154	255,831	434,476	23,829	9,013	53,005	68,276	599,052	214,018	321,860	18,835	6,876	37,463	47,283
	100.000%	32.961%	55.978%	3.070%	1.161%	6.829%	8.797%	100.000%	35.726%	53.728%	3.144%	1.148%	6.254%	7.893%
District 3	776,406	565,286	145,094	17,202	14,627	34,197	42,038	587,247	439,054	101,037	12,433	10,777	23,946	28,816
	100.000%	72.808%	18.688%	2.216%	1.884%	4.405%	5.414%	100.000%	74.765%	17.205%	2.117%	1.835%	4.078%	4.907%
District 4	776,258	458,311	259,877	11,583	17,648	28,839	34,515	596,685	365,129	188,942	8,535	13,442	20,637	24,056
	100.000%	59.041%	33.478%	1.492%	2.273%	3.715%	4.446%	100.000%	61.193%	31.665%	1.430%	2.253%	3.459%	4.032%
District 5	776,149	299,429	424,794	13,866	7,633	30,427	36,135	591,802	246,045	307,502	10,809	5,780	21,666	25,402
	100.000%	38.579%	54.731%	1.787%	0.983%	3.920%	4.656%	100.000%	41.576%	51.960%	1.826%	0.977%	3.661%	4.292%
District 6	776,474	574,184	126,437	16,315	14,689	44,849	51,593	592,211	450,394	88,358	11,575	10,910	30,974	34,606
	100.000%	73.948%	16.283%	2.101%	1.892%	5.776%	6.645%	100.000%	76.053%	14.920%	1.955%	1.842%	5.230%	5.844%
Grand Total	4,657,757	2,657,652	1,543,119	107,288	87,060	262,638	322,549	3,570,548	2,124,511	1,115,769	80,416	64,240	185,612	223,662
	100.000%	57.059%	33.130%	2.303%	1.869%	5.639%	6.925%	100.000%	59.501%	31.249%	2.252%	1.799%	5.198%	6.264%

# Voter Registration

Plan: 221ES-23 (Gaines)

	Reg Total Dec 2021	Reg White Dec 2021	Reg Black Dec 2021	Reg Other Dec 2021	Reg Dem Total Dec 2021	Reg Rep Total Dec 2021	Reg Other Total Dec 2021
District 1	479,045	358,750	78,792	41,503	160,805	178,160	140,080
	79.371%	74.889%	16.448%	8.664%	33.568%	37.191%	29.242%
District 2	497,615	180,136	278,690	38,789	295,899	76,147	125,569
	83.067%	36.200%	56.005%	7.795%	59.463%	15.302%	25.234%
District 3	468,837	373,718	73,893	21,226	143,541	196,923	128,373
	79.836%	79.712%	15.761%	4.527%	30.616%	42.002%	27.381%
District 4	479,988	312,515	148,465	19,008	174,980	186,120	118,888
	80.442%	65.109%	30.931%	3.960%	36.455%	38.776%	24.769%
District 5	474,175	199,325	257,547	17,303	257,512	105,973	110,690
	80.124%	42.036%	54.315%	3.649%	54.307%	22.349%	23.344%
District 6	494,686	403,545	65,361	25,780	128,267	225,457	140,962
	83.532%	81.576%	13.213%	5.211%	25.929%	45.576%	28.495%
Grand Total	2,894,346	1,827,989	902,748	163,609	1,161,004	968,780	764,562

# Splits

## Plan: 221ES-23 (Gaines)

	Total Population	Total White	Total Black	Total Asian	Total American Indian	Total Other	VAP Total	VAP White	VAP Black	VAP Asian	VAP American Indian	VAP Other	Reg Total Dec 2021	Reg White Dec 2021	Reg Black Dec 2021	Reg Other Dec 2021
District 1																
*Iberia	51,601	27,195	20,457	1,397	538	2,014	38,827	21,765	14,213	1,006	392	1,451	32,638	19,442	11,925	1,271
*Iberville	3,487	3,246	92	8	53	88	2,853	2,675	55	8	47	68	2,486	2,397	38	51
*Jefferson	237,070	152,179	30,464	11,551	4,272	38,604	189,699	127,396	22,277	8,731	3,223	28,072	144,781	113,529	12,362	18,890
Lafourche	97,557	71,710	15,855	1,025	4,224	4,743	74,619	56,838	11,077	738	2,777	3,189	58,278	48,467	7,164	2,647
*Orleans	74,394	57,227	8,058	2,948	890	5,271	62,008	48,131	6,781	2,308	720	4,068	52,223	41,765	4,896	5,562
Plaquemines	23,515	14,287	5,428	1,317	697	1,786	17,334	10,856	3,857	925	500	1,196	13,908	9,513	3,134	1,261
*St. Bernard	39,273	23,653	8,942	1,337	892	4,449	28,656	18,327	5,682	950	655	3,042	22,844	17,534	3,501	1,809
*St. Martin	32,199	21,586	8,843	445	337	988	24,813	17,062	6,457	329	271	694	22,169	15,515	6,112	542
*St. Mary	47,920	26,622	15,061	823	1,647	3,767	36,412	21,318	10,844	584	1,153	2,513	29,376	18,517	9,303	1,556
*St. Tammany	59,720	36,972	16,094	1,899	1,263	3,492	45,825	29,872	11,031	1,411	967	2,544	38,622	26,676	8,791	3,155
Terrebonne	109,580	69,934	23,147	1,743	8,637	6,119	82,505	55,631	15,796	1,239	5,750	4,089	61,720	45,395	11,566	4,759
District 1	776,316	504,611	152,441	24,493	23,450	71,321	603,551	409,871	108,070	18,229	16,455	50,926	479,045	358,750	78,792	41,503
	100.000%	65.001%	19.636%	3.155%	3.021%	9.187%	100.000%	67.910%	17.906%	3.020%	2.726%	8.438%	79.371%	74.889%	16.448%	8.664%
District 2																
*Ascension	30,404	11,330	16,762	317	294	1,701	22,394	9,034	11,786	224	199	1,151	19,503	8,146	10,520	837
Assumption	21,039	13,722	6,220	96	258	743	16,616	11,145	4,707	57	197	510	14,439	9,700	4,510	229
*Iberville	26,754	11,587	13,638	194	221	1,114	21,233	9,787	10,177	141	174	954	17,976	7,735	9,859	382
*Jefferson	203,711	68,756	95,753	11,473	3,414	24,315	154,955	56,739	69,898	8,961	2,612	16,745	118,320	46,087	57,214	15,019
*Lafayette	45,212	12,061	31,101	343	320	1,387	34,339	10,260	22,723	243	207	906	28,779	7,925	19,661	1,193
*Orleans	309,603	69,235	210,911	9,908	2,776	16,773	244,188	62,121	159,287	8,212	2,228	12,340	204,021	50,221	136,629	17,171
*St. Bernard	4,491	844	3,367	44	55	181	3,119	665	2,262	32	33	127	2,809	699	1,996	114
St. Charles	52,549	33,550	13,928	837	925	3,309	39,541	26,154	9,890	529	667	2,301	34,985	24,309	8,797	1,879
St. James	20,192	9,973	9,762	60	82	315	15,505	7,883	7,297	31	64	230	14,966	7,254	7,501	211
St. John the Baptist	42,477	13,877	25,196	403	465	2,536	32,503	11,622	18,437	323	350	1,771	28,913	10,219	17,234	1,460
*St. Martin	18,373	10,688	6,919	143	182	441	13,668	8,440	4,725	74	125	304	12,151	7,726	4,182	243
*St. Mary	1,349	208	919	11	21	190	991	168	671	8	20	124	753	115	587	51
District 2	776,154	255,831	434,476	23,829	9,013	53,005	599,052	214,018	321,860	18,835	6,876	37,463	497,615	180,136	278,690	38,789
	100.000%	32.961%	55.978%	3.070%	1.161%	6.829%	100.000%	35.726%	53.728%	3.144%	1.148%	6.254%	83.067%	36.200%	56.005%	7.795%
District 3																
Acadia	57,576	44,480	10,864	238	573	1,421	42,943	34,071	7,383	173	400	916	37,678	30,555	6,407	716
Allen	22,750	16,327	4,490	246	947	740	17,510	12,751	3,275	182	646	656	12,201	9,478	2,217	506
*Avoyelles	5,394	5,095	121	22	89	67	4,171	3,956	73	18	72	52	3,284	3,180	44	60
Beauregard	36,549	29,529	4,649	402	1,052	917	27,489	22,304	3,495	269	773	648	22,294	18,771	2,369	1,154
Calcasieu	216,785	139,772	59,386	4,702	3,536	9,389	163,166	108,789	41,898	3,359	2,604	6,516	120,511	85,659	29,513	5,339
Cameron	5,617	5,232	125	30	75	155	4,358	4,100	79	23	47	109	4,789	4,610	88	91

# Splits

## Plan: 221ES-23 (Gaines)

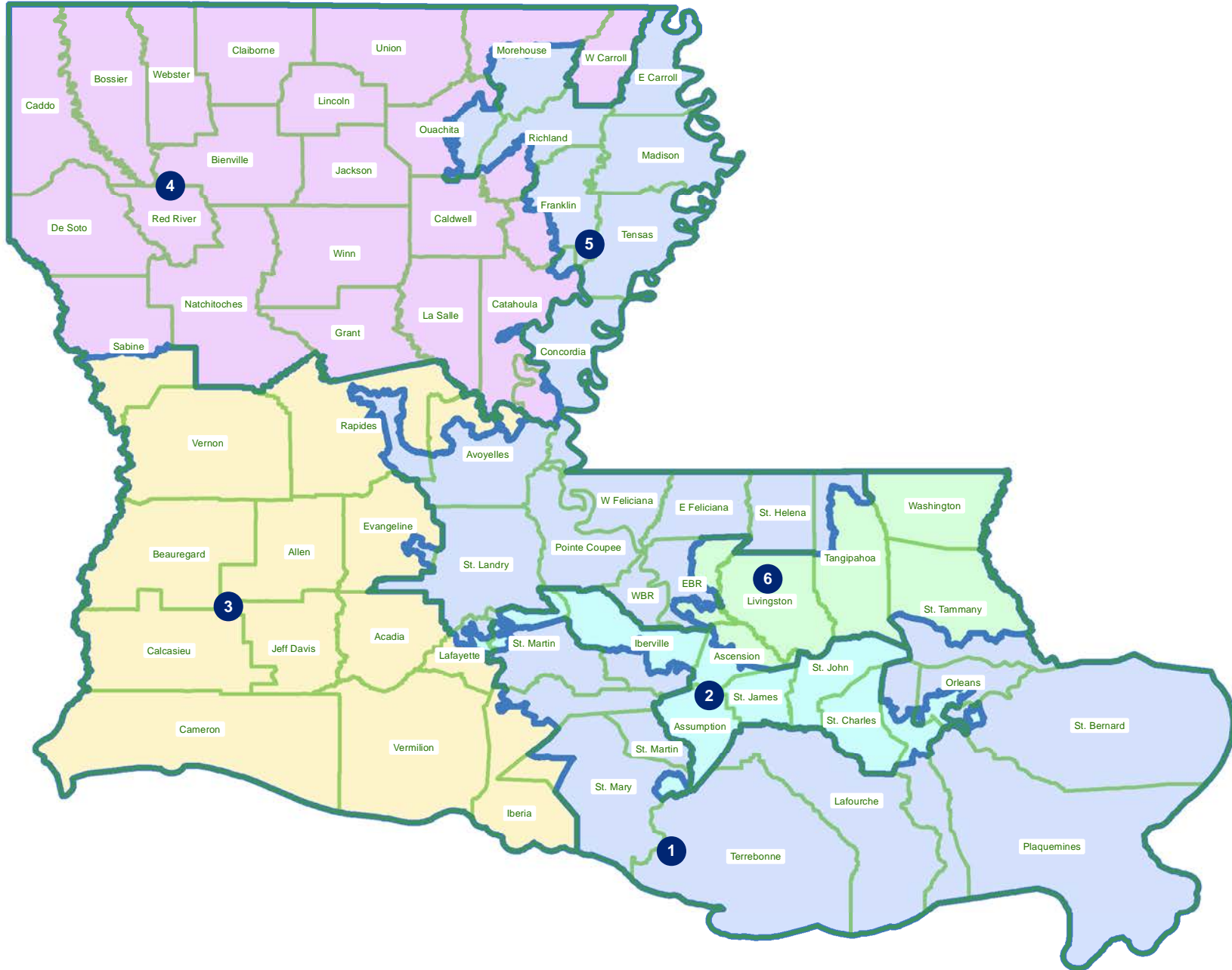
	Total Population	Total White	Total Black	Total Asian	Total American Indian	Total Other	VAP Total	VAP White	VAP Black	VAP Asian	VAP American Indian	VAP Other	Reg Total Dec 2021	Reg White Dec 2021	Reg Black Dec 2021	Reg Other Dec 2021
District 3																
*Evangeline	23,246	18,008	3,673	174	240	1,151	17,636	13,687	2,629	130	188	1,002	14,596	12,231	2,099	266
*Iberia	18,328	12,011	4,099	726	256	1,236	13,964	9,530	2,856	556	189	833	11,888	8,845	2,427	616
Jefferson Davis	32,250	25,066	5,837	183	472	692	24,039	19,121	4,006	111	325	476	20,013	16,350	3,202	461
*Lafayette	170,390	125,633	25,993	5,874	2,565	10,325	130,427	99,150	17,864	4,263	1,952	7,198	108,694	89,725	12,482	6,487
*Rapides	75,507	59,520	8,901	1,696	2,391	2,999	57,563	46,370	6,175	1,227	1,792	1,999	48,049	41,117	4,690	2,242
*Sabine	5,768	4,930	524	19	206	89	4,590	3,989	379	10	141	71	3,930	3,430	349	151
*St. Mary	137	119	11	1	2	4	118	108	5	1	0	4	81	80	1	0
Vermilion	57,359	44,477	8,810	1,447	623	2,002	43,012	34,363	5,787	1,037	488	1,337	36,769	30,505	4,994	1,270
Vernon	48,750	35,087	7,611	1,442	1,600	3,010	36,261	26,765	5,133	1,074	1,160	2,129	24,060	19,182	3,011	1,867
District 3	776,406	565,286	145,094	17,202	14,627	34,197	587,247	439,054	101,037	12,433	10,777	23,946	468,837	373,718	73,893	21,226
	100.000%	72.808%	18.688%	2.216%	1.884%	4.405%	100.000%	74.765%	17.205%	2.117%	1.835%	4.078%	79.836%	79.712%	15.761%	4.527%
District 4																
Bienville	12,981	6,950	5,600	57	207	167	10,073	5,486	4,284	30	162	111	8,847	4,843	3,917	87
Bossier	128,746	81,052	32,551	3,492	3,273	8,378	95,876	62,931	22,440	2,448	2,477	5,580	69,743	50,861	14,838	4,044
Caddo	237,848	103,457	119,304	4,034	3,840	7,213	182,407	85,059	86,359	3,008	2,958	5,023	151,296	73,113	71,249	6,934
Caldwell	9,645	7,646	1,632	51	150	166	7,478	5,969	1,224	46	116	123	6,031	5,124	818	89
*Catahoula	6,307	5,121	515	40	97	534	5,032	4,017	400	27	71	517	4,501	4,069	386	46
Claiborne	14,170	7,263	6,360	88	185	274	11,507	6,258	4,824	55	140	230	8,598	4,632	3,820	146
*Concordia	867	840	10	1	13	3	671	651	10	1	8	1	659	647	5	7
De Soto	26,812	15,284	9,973	117	740	698	20,440	11,909	7,425	86	557	463	18,713	11,330	6,810	573
*Franklin	3,367	2,975	308	7	40	37	2,597	2,317	227	2	22	29	2,474	2,262	194	18
Grant	22,169	17,709	3,335	133	644	348	17,527	13,964	2,717	97	507	242	12,688	11,174	1,176	338
Jackson	15,031	9,967	4,166	175	255	468	11,783	7,967	3,125	140	174	377	9,449	6,647	2,610	192
La Salle	14,791	11,348	1,422	283	372	1,366	11,563	8,636	1,065	264	271	1,327	8,792	7,978	637	177
Lincoln	48,396	26,034	19,364	892	662	1,444	38,655	21,306	15,119	744	526	960	25,649	15,672	9,016	961
*Morehouse	5,376	4,465	633	47	137	94	4,258	3,560	496	33	93	76	3,907	3,342	494	71
Natchitoches	37,515	19,361	15,725	255	861	1,313	29,349	16,010	11,415	198	683	1,043	23,107	12,850	9,224	1,033
*Ouachita	83,849	68,632	8,995	1,296	1,966	2,960	63,327	52,849	6,014	906	1,533	2,025	53,919	47,743	4,317	1,859
Red River	7,620	4,195	3,106	25	171	123	5,714	3,338	2,164	3	116	93	5,631	3,130	2,418	83
*Richland	2,801	2,223	486	8	50	34	2,131	1,731	328	8	44	20	1,965	1,600	338	27
*Sabine	16,387	10,106	3,337	75	2,517	352	12,474	8,065	2,276	56	1,829	248	10,617	7,593	1,835	1,189
Union	21,107	14,460	5,224	62	338	1,023	16,632	11,807	3,861	39	254	671	15,221	11,066	3,692	463
Webster	36,967	22,735	12,679	208	687	658	28,753	18,144	9,464	154	558	433	22,737	14,938	7,339	460
West Carroll	9,751	7,894	1,425	27	180	225	7,532	6,223	1,010	20	136	143	7,038	5,913	1,040	85
Winn	13,755	8,594	3,727	210	263	961	10,906	6,932	2,695	170	207	902	8,406	5,988	2,292	126

# Splits

## Plan: 221ES-23 (Gaines)

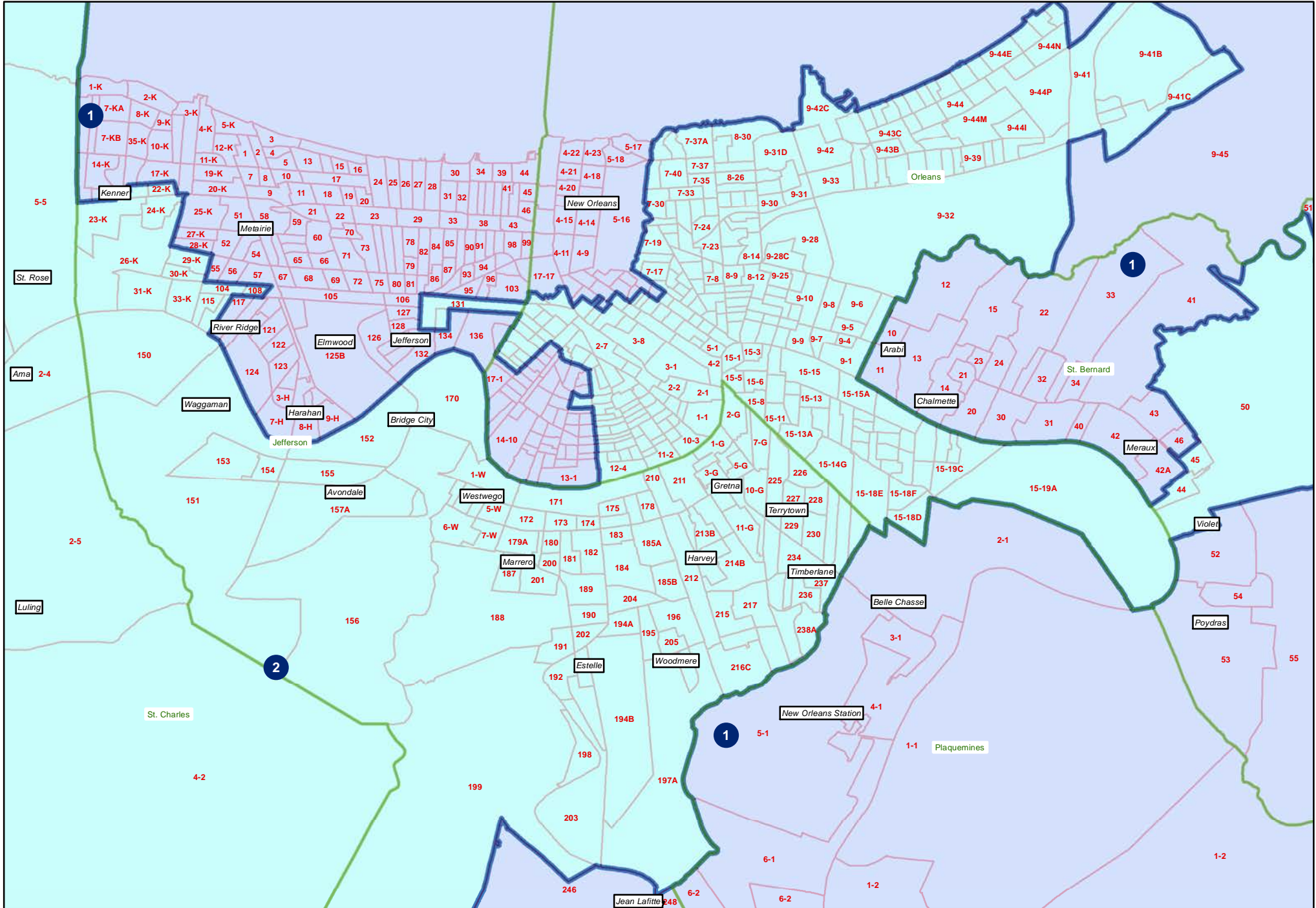
	Total Population	Total White	Total Black	Total Asian	Total American Indian	Total Other	VAP Total	VAP White	VAP Black	VAP Asian	VAP American Indian	VAP Other	Reg Total Dec 2021	Reg White Dec 2021	Reg Black Dec 2021	Reg Other Dec 2021
District 4	776,258	458,311	259,877	11,583	17,648	28,839	596,685	365,129	188,942	8,535	13,442	20,637	479,988	312,515	148,465	19,008
	100.000%	59.041%	33.478%	1.492%	2.273%	3.715%	100.000%	61.193%	31.665%	1.430%	2.253%	3.459%	80.442%	65.109%	30.931%	3.960%
District 5																
*Avoyelles	34,299	20,530	11,557	412	678	1,122	26,407	16,313	8,238	361	498	997	20,142	13,354	6,250	538
*Catahoula	2,599	655	1,880	6	22	36	1,919	540	1,336	6	16	21	1,966	570	1,384	12
*Concordia	17,820	9,435	7,715	121	220	329	13,546	7,457	5,603	99	159	228	11,305	6,575	4,535	195
*East Baton Rouge	284,119	72,783	182,369	9,263	2,291	17,413	217,393	62,245	134,026	7,254	1,818	12,050	162,457	45,635	107,736	9,086
East Carroll	7,459	2,054	5,272	29	43	61	5,901	1,773	4,043	19	27	39	4,709	1,306	3,359	44
East Feliciana	19,539	11,516	7,341	91	262	329	16,183	9,740	5,918	61	198	266	13,600	7,959	5,186	455
*Evangeline	9,104	3,346	5,562	67	40	89	6,772	2,773	3,854	57	29	59	5,957	2,335	3,544	78
*Franklin	16,407	9,517	6,494	63	165	168	12,431	7,584	4,552	42	131	122	10,685	6,753	3,840	92
*Lafayette	26,151	15,669	8,042	237	325	1,878	19,109	12,198	5,330	158	228	1,195	16,020	10,995	4,338	687
Madison	10,017	3,475	6,363	20	59	100	7,435	2,906	4,391	9	48	81	7,278	2,494	4,674	110
*Morehouse	20,253	7,816	11,851	113	233	240	15,804	6,535	8,804	84	186	195	13,015	5,163	7,637	215
*Ouachita	76,519	19,913	52,222	1,492	695	2,197	56,873	17,125	36,276	1,212	526	1,734	45,833	12,772	31,341	1,720
Pointe Coupee	20,758	12,395	7,504	107	159	593	16,250	10,108	5,502	91	119	430	14,675	9,320	5,121	234
*Rapides	54,516	17,990	33,691	732	711	1,392	41,229	15,003	24,030	559	542	1,095	32,127	11,715	19,085	1,327
*Richland	17,242	9,562	7,117	75	208	280	13,252	7,607	5,218	58	159	210	11,697	6,870	4,623	204
St. Helena	10,920	4,527	6,031	39	134	189	8,463	3,805	4,371	28	109	150	8,321	3,628	4,565	128
St. Landry	82,540	43,611	35,836	499	636	1,958	61,811	34,209	25,497	353	451	1,301	54,482	30,093	23,005	1,384
*St. Martin	1,195	985	159	9	20	22	923	776	111	4	17	15	800	693	87	20
*Tangipahoa	18,036	6,716	10,566	92	155	507	13,557	5,473	7,574	77	103	330	11,103	4,563	6,275	265
Tensas	4,147	1,744	2,312	23	26	42	3,235	1,446	1,728	12	23	26	3,455	1,503	1,917	35
West Baton Rouge	27,199	14,307	11,170	287	326	1,109	20,526	11,146	8,149	209	219	803	17,141	9,937	6,865	339
West Feliciana	15,310	10,883	3,740	89	225	373	12,783	9,283	2,951	56	174	319	7,407	5,092	2,180	135
District 5	776,149	299,429	424,794	13,866	7,633	30,427	591,802	246,045	307,502	10,809	5,780	21,666	474,175	199,325	257,547	17,303
	100.000%	38.579%	54.731%	1.787%	0.983%	3.920%	100.000%	41.576%	51.960%	1.826%	0.977%	3.661%	80.124%	42.036%	54.315%	3.649%
District 6																
*Ascension	96,096	69,811	15,454	1,983	1,710	7,138	69,563	52,102	10,353	1,290	1,191	4,627	60,414	48,654	8,294	3,466
*East Baton Rouge	172,662	123,286	31,029	7,162	2,436	8,749	138,219	101,636	22,764	5,345	1,929	6,545	116,807	92,597	16,939	7,271
Livingston	142,282	116,855	12,658	1,697	3,111	7,961	105,141	88,432	8,136	1,099	2,311	5,163	84,568	76,062	5,425	3,081
*St. Tammany	204,850	159,669	22,549	3,875	4,397	14,360	156,403	124,749	15,730	2,664	3,194	10,066	140,157	119,048	12,351	8,758
*Tangipahoa	115,121	74,620	31,313	1,382	2,299	5,507	87,934	59,732	21,643	1,023	1,724	3,812	65,153	48,349	14,250	2,554
Washington	45,463	29,943	13,434	216	736	1,134	34,951	23,743	9,732	154	561	761	27,587	18,835	8,102	650
District 6	776,474	574,184	126,437	16,315	14,689	44,849	592,211	450,394	88,358	11,575	10,910	30,974	494,686	403,545	65,361	25,780
	100.000%	73.948%	16.283%	2.101%	1.892%	5.776%	100.000%	76.053%	14.920%	1.955%	1.842%	5.230%	83.532%	81.576%	13.213%	5.211%

221ES-23 (Gaines)  
Statewide

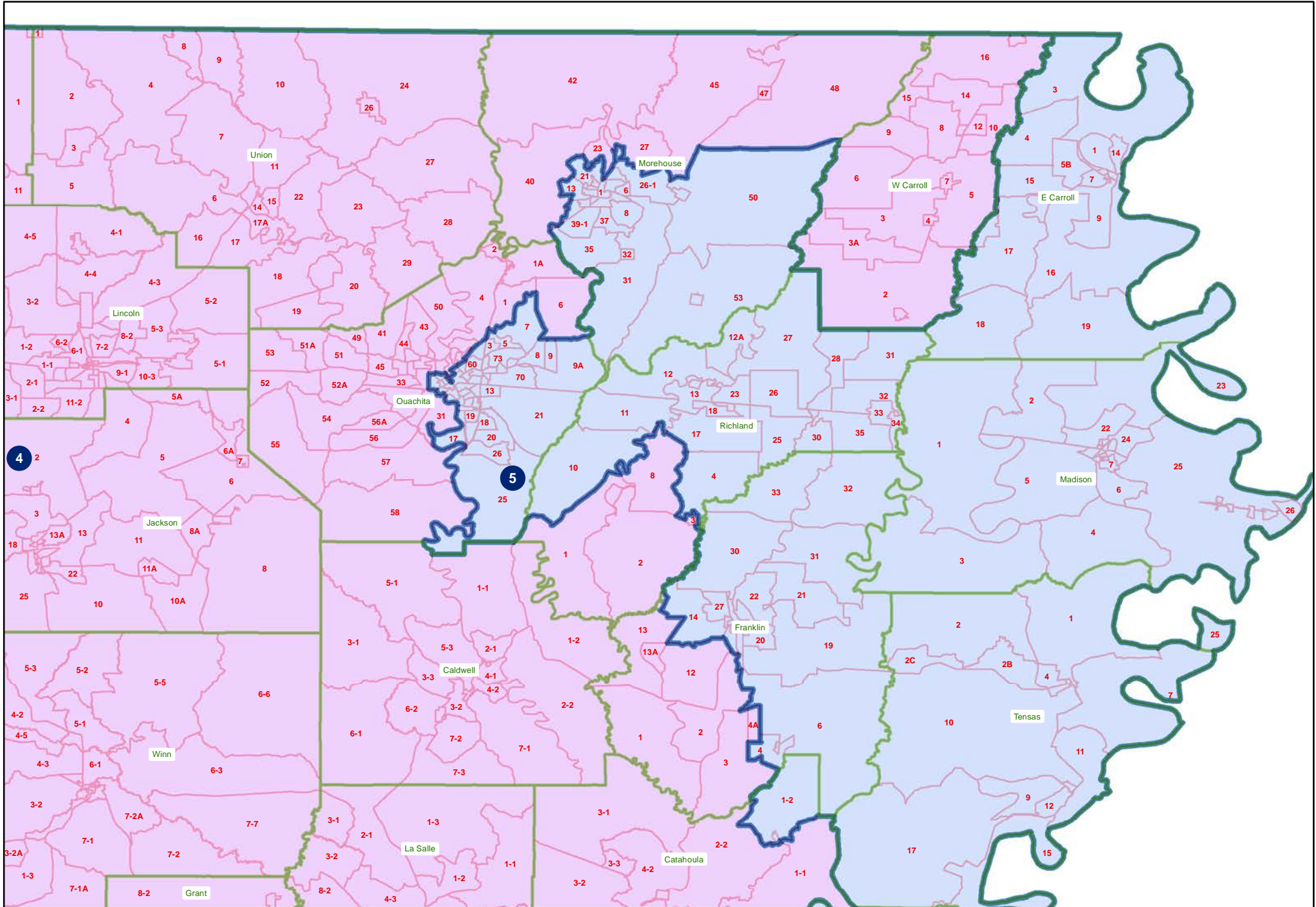




# 221ES-23 (Gaines) Orleans and Jefferson

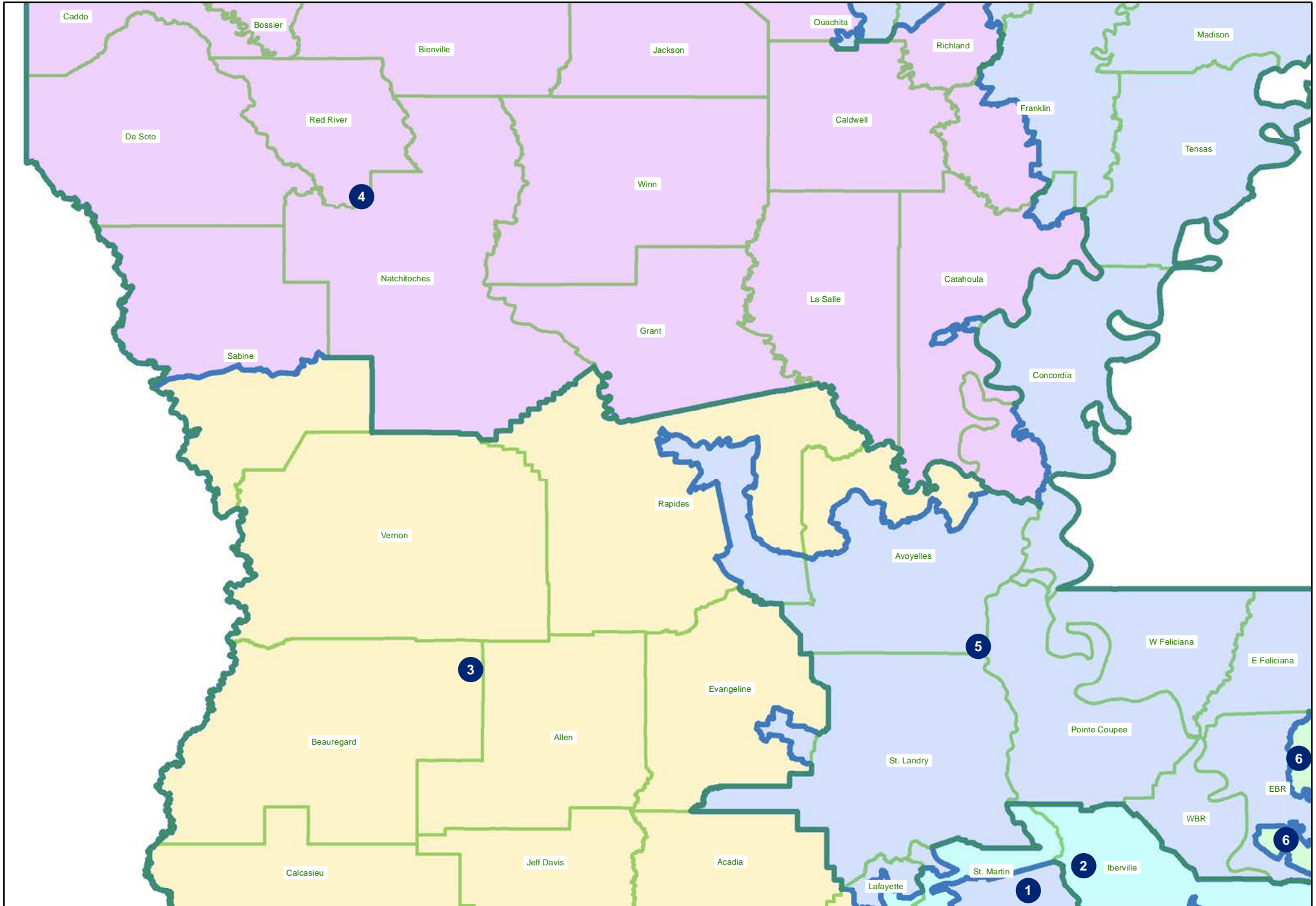


221ES-23 (Gaines)  
Northeast

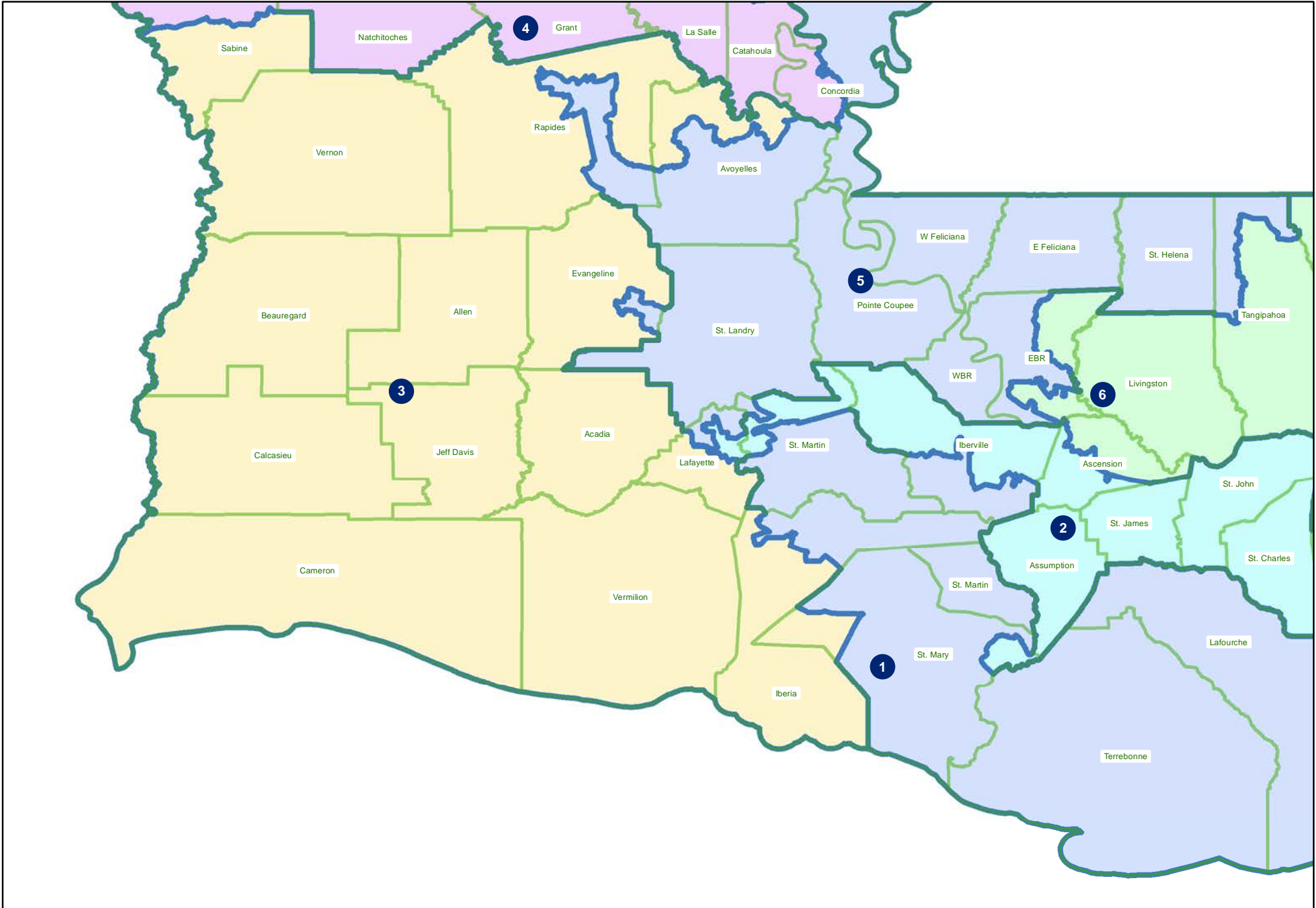




221ES-23 (Gaines)  
Central

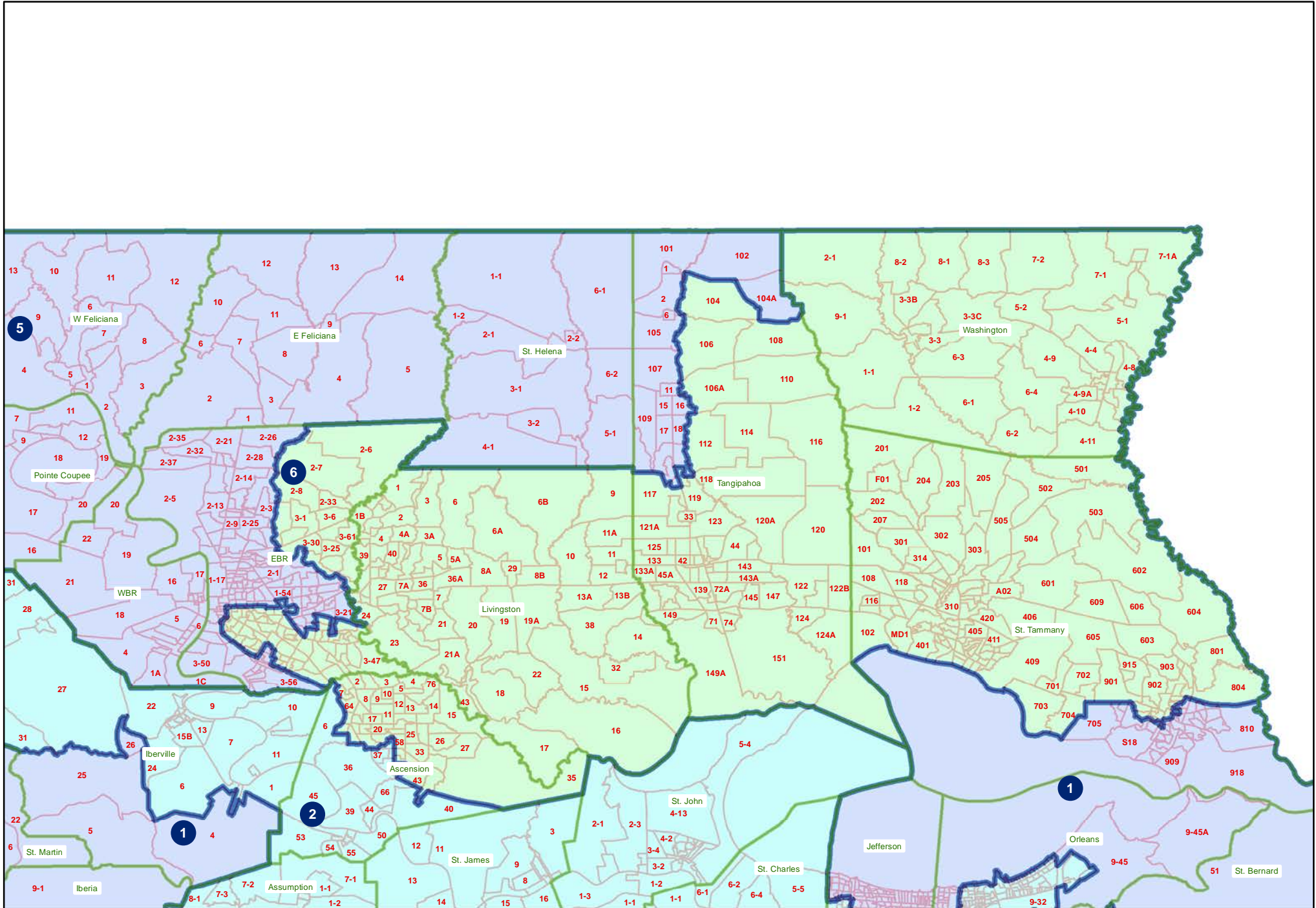


221ES-23 (Gaines)  
Southwest



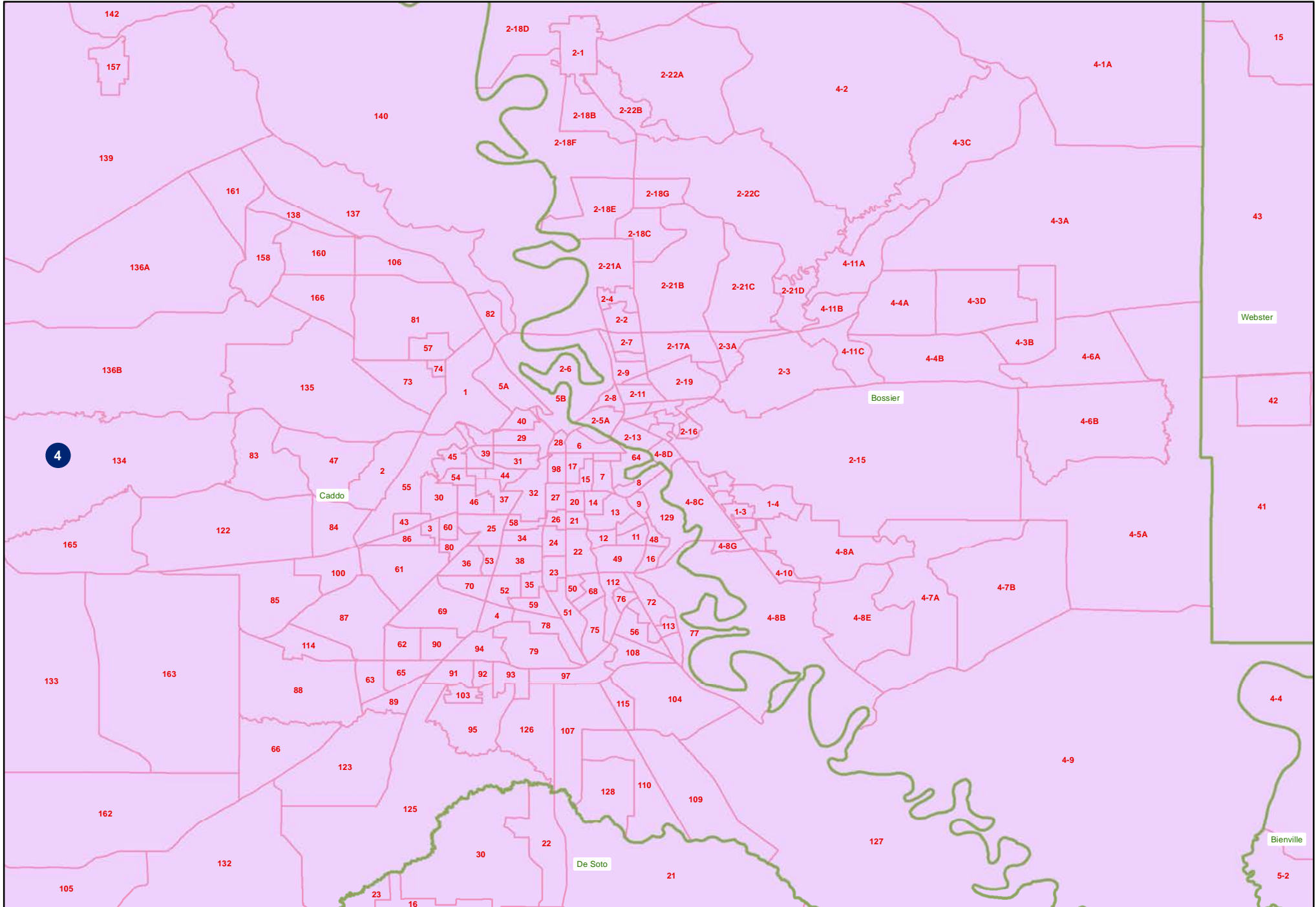
# 221ES-23 (Gaines)

## Florida Parishes

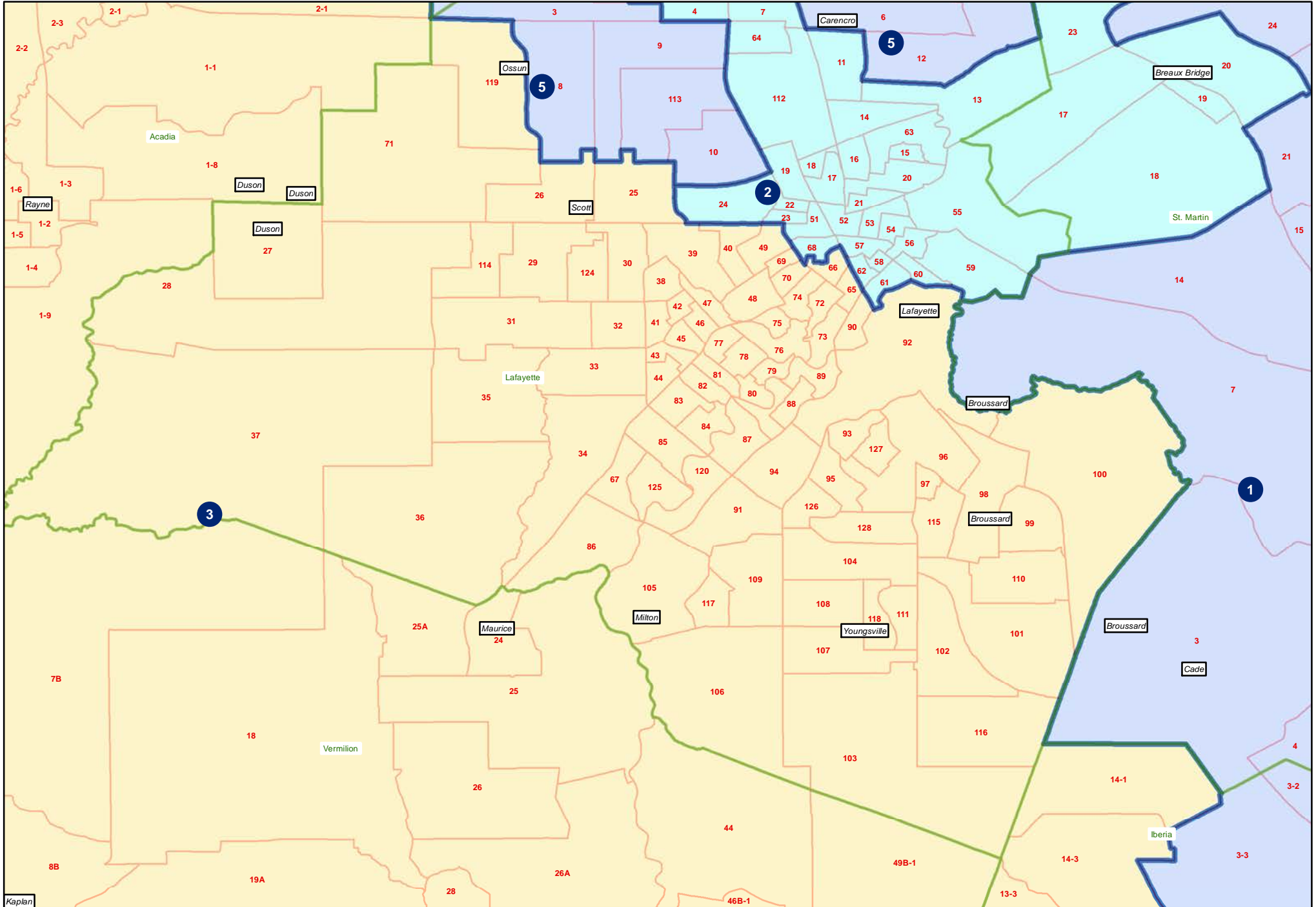




# 221ES-23 (Gaines) Shreveport

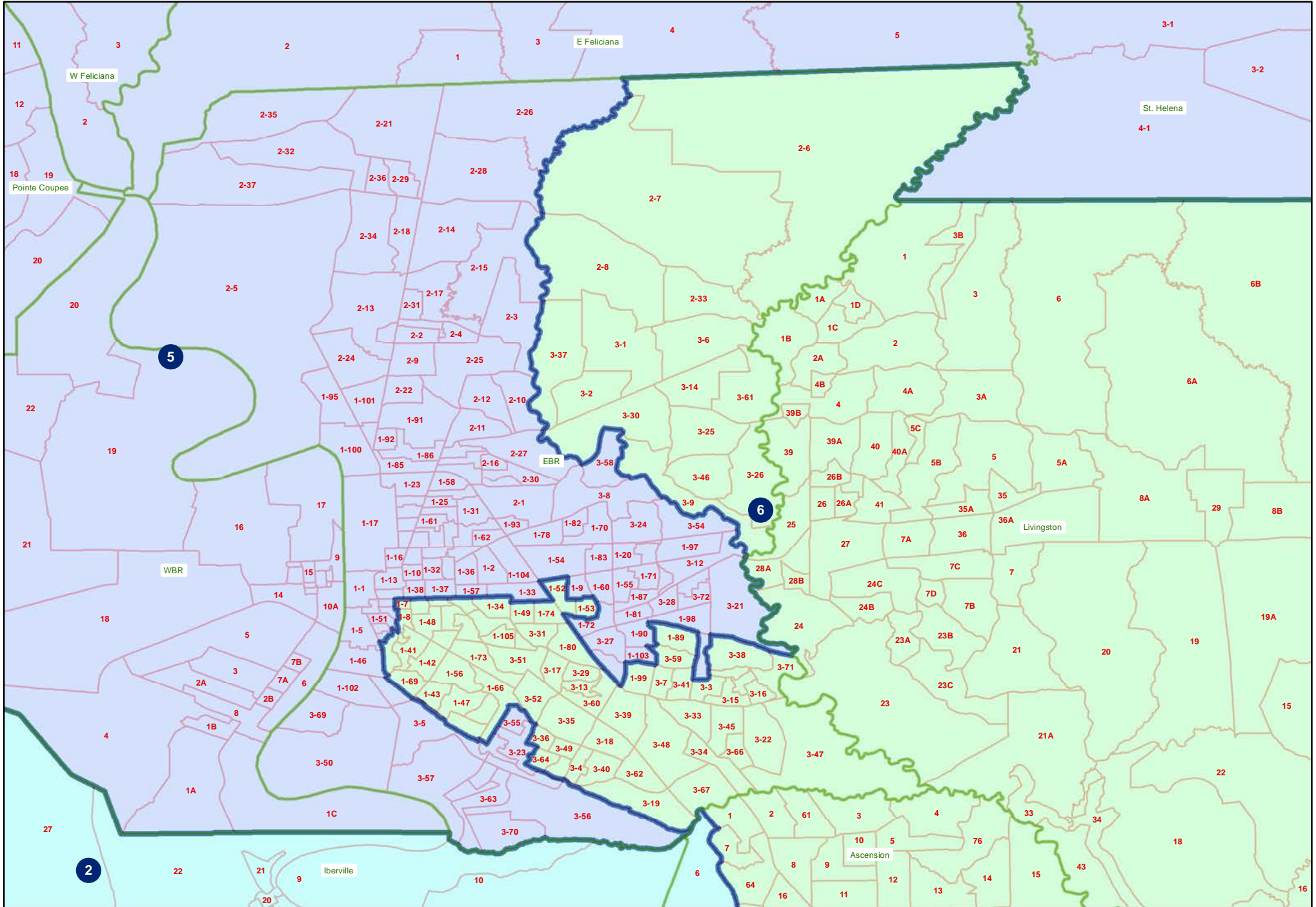


# 221ES-23 (Gaines) Lafayette



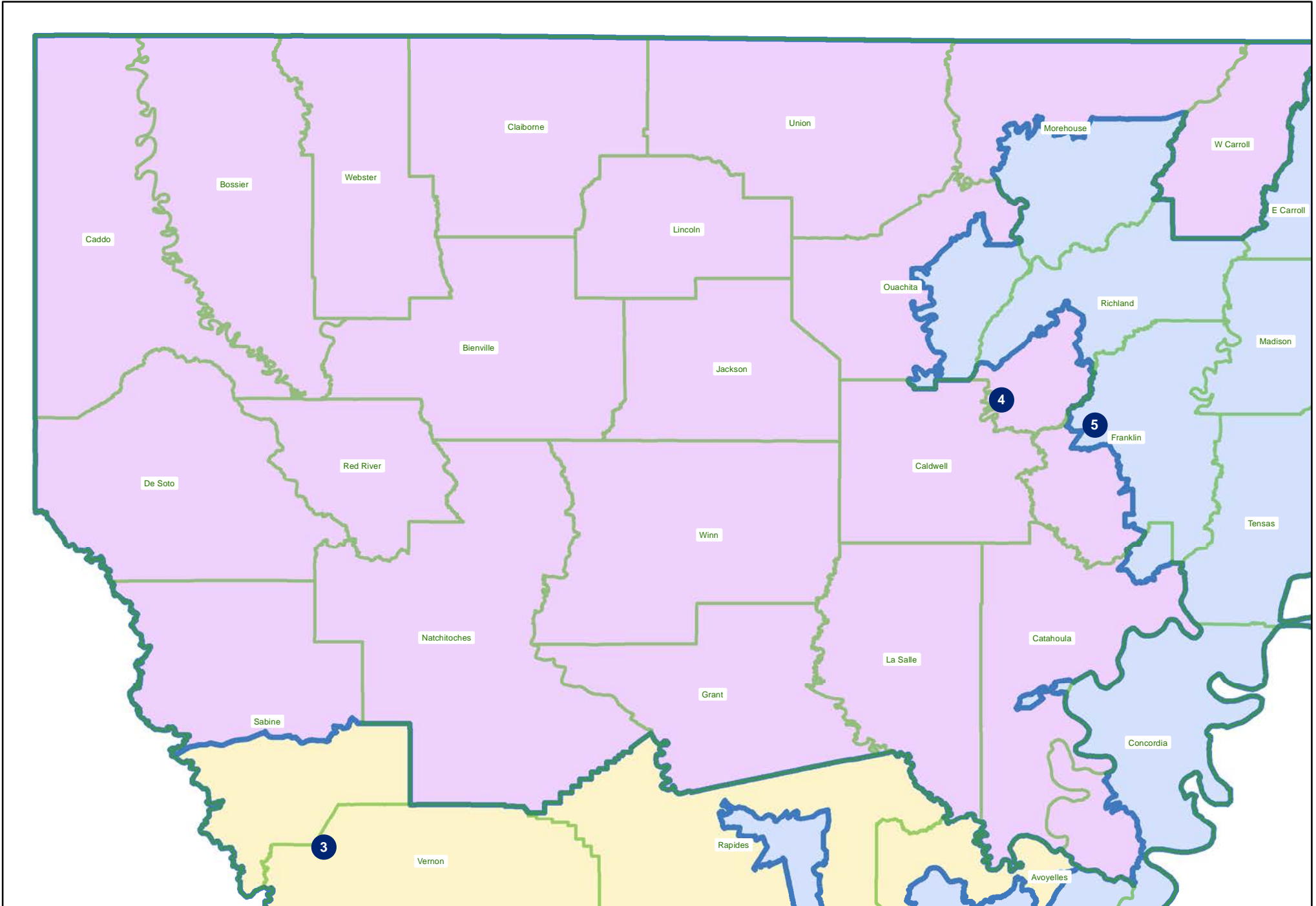


# 221ES-23 (Gaines) Baton Rouge

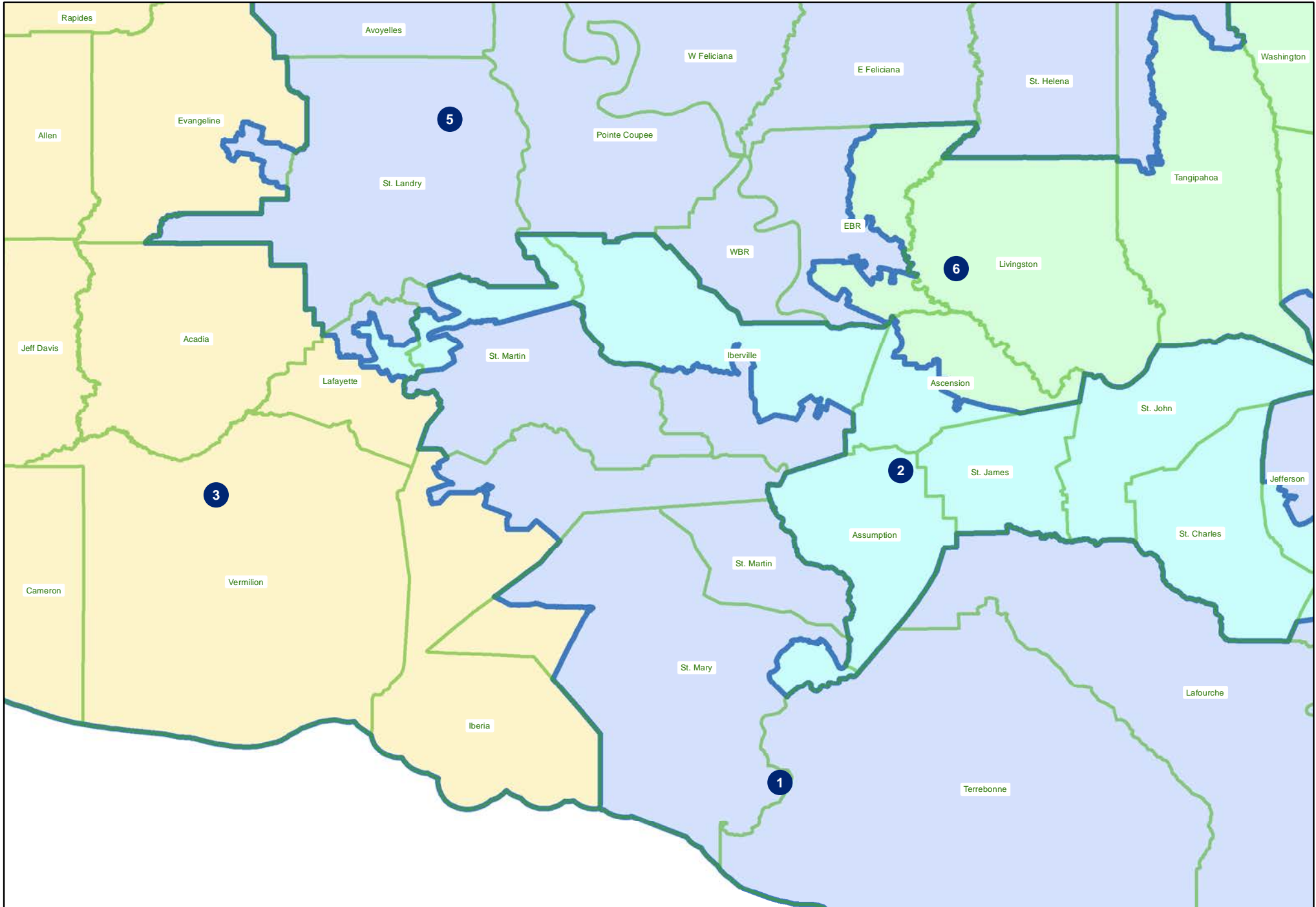




221ES-23 (Gaines)  
Northwest



# 221ES-23 (Gaines) Acadiana



221ES-23 (Gaines)  
Monroe

