

2022 First Extraordinary Session

HOUSE BILL NO. 8

BY REPRESENTATIVE GAINES

REAPPORTIONMENT/CONGRESS: Provides relative to the election districts for members of congress (Item #3)

1 AN ACT

2 To enact R.S. 18:1276 and to repeal R.S. 18:1276.1, relative to congressional districts; to
3 provide for the redistricting of Louisiana's congressional districts; to provide with
4 respect to positions and offices, other than congressional, which are based upon
5 congressional districts; to provide for the effectiveness; and to provide for related
6 matters.

7 Be it enacted by the Legislature of Louisiana:

8 Section 1. R.S. 18:1276 is hereby enacted to read as follows:

9 §1276. Congressional districts

10 Louisiana shall be divided into six congressional districts, and the qualified
11 electors of each district shall elect one representative to the United States House of
12 Representatives. The districts shall be composed as follows:

- 13 (1) District 1 is composed of Precincts 6-3, 6-5, 7-1, 7-2, 7-4, 7-5, 8-2, 8-3,
- 14 9-1, 9-2, 9-4, and 9-5 of Iberia Parish; Precincts 1, 2, 3, 4, 5, 7, 8, 9, 10, 11, 12, 13,
- 15 14, 15, 16, 17, 18, 19, 20, 21, 22, 23, 24, 25, 26, 27, 28, 29, 30, 31, 32, 33, 34, 35, 36,
- 16 37, 38, 39, 40, 41, 42, 43, 44, 45, 46, 51, 52, 53, 54, 55, 56, 57, 58, 59, 60, 61, 62, 63,
- 17 64, 65, 66, 67, 68, 69, 70, 71, 72, 73, 74, 75, 76, 77, 78, 79, 80, 81, 82, 83, 84, 85, 86,
- 18 87, 88, 89, 90, 91, 92, 93, 94, 95, 96, 97, 98, 99, 100, 101, 102, 103, 105, 106, 117,
- 19 118, 119, 120, 121, 122, 123, 124, 125A, 125B, 126, 127, 128, 129, 130, 131, 132,
- 20 133, 134, 136, 138, 246, 247, 248, 1-GI, 1-H, 2-H, 3-H, 4-H, 5-H, 6-H, 7-H, 8-H,

1 9-H, 1-K, 2-K, 3-K, 4-K, 5-K, 6-KA, 6-KB, 7-KA, 7-KB, 8-K, 9-K, 10-K, 11-K,
2 12-K, 13-KA, 14-K, 15-K, 16-K, 17-K, 18-K, 19-K, 20-K, 25-K, 27-K, 28-K, 29-K,
3 34-K, 35-K, and 1-L of Jefferson Parish; Lafourche Parish; Precincts 3-14, 3-19,
4 3-20, 4-7, 4-8, 4-9, 4-11, 4-14, 4-15, 4-17, 4-17A, 4-18, 4-20, 4-21, 4-22, 4-23, 5-11,
5 5-12, 5-13, 5-15, 5-16, 5-17, 5-18, 6-8, 6-9, 7-17, 9-45, 9-45A, 12-1, 12-2, 12-3,
6 12-4, 12-5, 12-6, 12-7, 12-8, 12-10, 13-1, 13-2, 13-3, 13-4, 13-5, 13-6, 13-7, 13-8,
7 13-9, 13-10, 14-1, 14-2, 14-3, 14-4, 14-5, 14-6, 14-7, 14-8, 14-9, 14-10, 14-11,
8 14-12, 14-13A, 14-14, 14-15, 14-16, 14-17, 14-18A, 14-19, 14-20, 14-21, 16-1,
9 16-1A, 16-2, 16-3, 16-4, 16-5, 16-6, 16-7, 16-8, 17-1, 17-2, 17-17, 17-18, 17-18A,
10 17-19, and 17-20 of Orleans Parish; Plaquemines Parish; St. Bernard Parish;
11 Precincts 2-1, 2-3, 2-5, 4-1, 4-2, 4-3, 7-1, 7-2, and 7-3 of St. Charles Parish;
12 Precincts 1 and 2 of St. Martin Parish; Precincts 4, 6, 7, 10, 11, 14, 19, 20, 21, 22, 23,
13 24, 25, 26, 27, 28, 29, 30, 31, 32, 33, 34, 35, 36, 37, 38, 39, 40, 41, 42, 43, 44, and
14 45 of St. Mary Parish; Precincts 603, 701, 702, 703, 704, 705, 706, 801, 802, 803,
15 804, 805, 806, 807, 808, 809, 810, 811, 812, 813, 814, 815, 816, 817, 818, 901, 902,
16 903, 904, 905, 906, 907, 909, 910, 911, 912, 913, 914, 915, 916, 917, 918, 921, 922,
17 P01, S01, S02, S03, S04, S05, S06, S07, S08, S09, S10, S11, S13, S15, S16, S17,
18 S18, S19, S20, S21, S22, S23, S24, and S25 of St. Tammany Parish; and Terrebonne
19 Parish.

20 (2) District 2 is composed of Precincts 6, 28, 30, 31, 32, 36, 37, 39, 40, 42,
21 44, 45, 47, 48, 50, 51, 52, 53, 54, 55, 57, 58, 65, and 71 of Ascension Parish;
22 Assumption Parish; Precincts 1-1, 1-3, 2-1, 2-3, 3-1, 3-2, 3-3, 4-1, 4-2, 4-3, 4-4, 6-1,
23 10-1, and 10-2 of Iberia Parish; Iberville Parish; Precincts 104, 108, 115, 116, 150,
24 151, 152, 153, 154, 155, 156, 157A, 157B, 170, 171, 172, 173, 174, 175, 176, 177,
25 178, 179A, 179B, 180, 181, 182, 183, 184, 185A, 185B, 187, 188, 189, 190, 191,
26 192, 193A, 193B, 194A, 194B, 195, 196, 197A, 197B, 198, 199, 200, 201, 202, 203,
27 204, 205, 210, 211, 212, 213A, 213B, 213C, 214A, 214B, 215, 216A, 216B, 216C,
28 217, 225, 226, 227, 228, 229, 230, 231, 232A, 232B, 234, 235, 236, 237, 238A,
29 238B, 1-G, 2-G, 3-G, 4-G, 5-G, 6-G, 7-G, 8-G, 9-G, 10-G, 11-G, 12-G, 13-G,

1 13-KB, 21-K, 22-K, 23-K, 24-K, 26-K, 30-K, 31-K, 33-K, 1-W, 2-W, 3-W, 4-W,
2 5-W, 6-W, and 7-W of Jefferson Parish; Precincts 1-1, 1-2, 1-5, 1-6, 2-1, 2-2, 2-4,
3 2-6, 2-7, 3-1, 3-8, 3-9, 3-12, 3-15, 3-18, 4-2, 4-3, 4-5, 4-6, 5-1, 5-2, 5-3, 5-5, 5-7, 5-8,
4 5-9, 5-10, 6-1, 6-2, 6-4, 6-6, 6-7, 7-1, 7-2, 7-4, 7-5, 7-6, 7-7, 7-8, 7-9A, 7-10, 7-11,
5 7-12, 7-13, 7-14, 7-15, 7-16, 7-18, 7-19, 7-20, 7-21, 7-23, 7-24, 7-25, 7-25A, 7-26,
6 7-27, 7-27B, 7-28, 7-28A, 7-29, 7-30, 7-32, 7-33, 7-35, 7-37, 7-37A, 7-40, 7-41,
7 7-42, 8-1, 8-2, 8-4, 8-6, 8-7, 8-8, 8-9, 8-12, 8-13, 8-14, 8-15, 8-19, 8-20, 8-21, 8-22,
8 8-23, 8-24, 8-25, 8-26, 8-27, 8-28, 8-30, 9-1, 9-3, 9-4, 9-5, 9-6, 9-7, 9-8, 9-9, 9-10,
9 9-11, 9-12, 9-13, 9-14, 9-15, 9-16, 9-17, 9-19, 9-21, 9-23, 9-25, 9-26, 9-28, 9-28C,
10 9-29, 9-30, 9-30A, 9-31, 9-31A, 9-31B, 9-31D, 9-32, 9-33, 9-34A, 9-35, 9-35A,
11 9-36, 9-36B, 9-37, 9-38, 9-38A, 9-39, 9-39B, 9-40, 9-40A, 9-40C, 9-41, 9-41A,
12 9-41B, 9-41C, 9-41D, 9-42, 9-42C, 9-43A, 9-43B, 9-43C, 9-43E, 9-43F, 9-43G,
13 9-43H, 9-43I, 9-43J, 9-43K, 9-43L, 9-43M, 9-43N, 9-44, 9-44A, 9-44B, 9-44D,
14 9-44E, 9-44F, 9-44G, 9-44I, 9-44J, 9-44L, 9-44M, 9-44N, 9-44O, 9-44P, 9-44Q,
15 10-3, 10-6, 10-7, 10-8, 10-9, 10-11, 10-12, 10-13, 10-14, 11-2, 11-3, 11-4, 11-5,
16 11-8, 11-9, 11-10, 11-11, 11-12, 11-13, 11-14, 11-17, 12-9, 12-11, 12-12, 12-13,
17 12-14, 12-16, 12-17, 12-19, 13-11, 13-12, 13-13, 13-14, 13-15, 13-16, 14-23,
18 14-24A, 14-25, 14-26, 15-1, 15-2, 15-3, 15-5, 15-6, 15-8, 15-9, 15-10, 15-11, 15-12,
19 15-12A, 15-13, 15-13A, 15-13B, 15-14, 15-14A, 15-14B, 15-14C, 15-14D, 15-14E,
20 15-14F, 15-14G, 15-15, 15-15A, 15-15B, 15-16, 15-17, 15-17A, 15-17B, 15-18,
21 15-18A, 15-18B, 15-18C, 15-18D, 15-18E, 15-18F, 15-19, 15-19A, 15-19B, 15-19C,
22 16-9, 17-3, 17-4, 17-5, 17-6, 17-7, 17-8, 17-9, 17-10, 17-11, 17-12, 17-13, 17-13A,
23 17-14, 17-15, and 17-16 of Orleans Parish; Precincts 1-1, 1-2, 1-3, 1-5, 1-6, 2-2, 2-4,
24 2-6, 3-1, 3-2, 3-3, 4-4, 5-1, 5-3, 5-4, 5-5, 6-1, 6-2, 6-4, 6-6, 6-7, 6-8, and 7-4 of
25 St. Charles Parish; St. James Parish; St. John the Baptist Parish; and Precincts 3, 4,
26 5, 6, 7, 8, 9, 10, 11, 12, 13, 14, 15, 16, 17, 18, 19, 20, 21, 22, 23, 24, 25, 26, 27, 28,
27 and 29 of St. Martin Parish.

28 (3) District 3 is composed of Acadia Parish; Allen Parish; Beauregard Parish;
29 Calcasieu Parish; Cameron Parish; Precincts 1020, 1030, 1040, 1041, 1050, 1060,

1 1130, 1140, 1161, 1171, 2010, 2010A, 2020, 2030, 2040, 3010, 3020, 3030, 3031,
2 3032, 3040, 3050, 3051, 3052, 3060, 3070, 3071, 4001, 4010, 4011, 4012, 4020,
3 4021, 4030, 4040, 5004, 5010, 5020, 5030, 5040, 5041, and 5050 of Evangeline
4 Parish; Precincts 5-4, 10-3, 10-4, 10-7, 11-2, 12-1, 12-3, 13-1, 13-3, 14-1, and 14-3
5 of Iberia Parish; Jefferson Davis Parish; Precincts 25, 26, 27, 28, 29, 30, 31, 32, 33,
6 34, 35, 36, 37, 38, 39, 40, 41, 42, 43, 44, 45, 46, 47, 48, 49, 65, 66, 67, 69, 70, 71, 72,
7 73, 74, 75, 76, 77, 78, 79, 80, 81, 82, 83, 84, 85, 86, 87, 88, 89, 90, 91, 92, 93, 94, 95,
8 96, 97, 98, 99, 100, 101, 102, 103, 104, 105, 106, 107, 108, 109, 110, 111, 114, 115,
9 116, 117, 118, 119, 120, 121, 124, 125, 126, 127, and 128 of Lafayette Parish;
10 Precincts C22, C23, C26, C27, C30, C31, C32, C33, C34, C35, C36, C37-A, C37-B,
11 C41, C42, N1, N5, N6, N7, N8, N11, N12, N13-A, N13-B, N14-A, N14-B, N15,
12 N16, N17, N18-A, N18-B, N19, N20, N21, N22, N23, N24, N25, N26, S1, S2, S4,
13 S5, S6A, S6B, S7, S8, S9, S10, S11, S13, S14, S15, S16, S17, S18, S19, S20, S21,
14 S22, S23, S24, S25, S26, S27, S28, and S29 of Rapides Parish; Precincts 1, 2, 3, 5,
15 8, 9, 12, 13, 15, 16, 17, and 18 of St. Mary Parish; Vermilion Parish; and Precincts
16 1-1, 1-1B, 1-2, 1-2A, 1-3, 1-3B, 1-3C, 1-3D, 1-4, 1-4A, 1-4B, 1-4C, 1-4D, 1-5, 1-6,
17 1-6A, 1-6B, 1-7, 1-7A, 1-7B, 1-8, 1-8A, 1-8C, 1-8E, 1-8F, 2-4, 2-4E, 3-1, 3-2, 3-3,
18 3-4, 3-5, 4-1, 4-2, 4-3, 4-3A, 4-3C, 4-3E, 4-3F, 4-3G, 4-3J, 4-3K, 4-3L, 4-3M, 4-3N,
19 5-1, 5-1A, 5-2, 5-2A, 7-1, 7-2, 7-2A, 7-3, 7-4, 7-4A, 7-5, 7-5A, 7-5C, 8-2, and 8-3
20 of Vernon Parish.

21 (4) District 4 is composed of Bienville Parish; Bossier Parish; Caddo Parish;
22 Caldwell Parish; Catahoula Parish; Claiborne Parish; De Soto Parish; Grant Parish;
23 Jackson Parish; La Salle Parish; Lincoln Parish; Natchitoches Parish; Precincts 1,
24 1A, 2, 4, 6, 7, 25, 31, 32, 33, 34, 35, 36, 37, 38, 39, 40, 41, 42, 43, 44, 44A, 45, 46,
25 47, 48, 49, 50, 51, 51A, 52, 52A, 53, 54, 55, 56, 56A, 57, 58, 61, 64, 71, 75, 77, and
26 78 of Ouachita Parish; Red River Parish; Sabine Parish; Union Parish; Precincts
27 1-5A, 1-9, 2-1, 2-1A, 2-2, 2-2A, 2-3, 2-3A, 6-1, 6-2, 6-3, 6-4, and 8-1 of Vernon
28 Parish; Webster Parish; and Winn Parish.

1 (5) District 5 is composed of Avoyelles Parish; Concordia Parish; Precincts
2 1-2, 1-6, 1-9, 1-10, 1-11, 1-13, 1-14, 1-15, 1-16, 1-17, 1-18, 1-19, 1-20, 1-21, 1-22,
3 1-23, 1-24, 1-25, 1-26, 1-27, 1-28, 1-29, 1-30, 1-31, 1-32, 1-36, 1-37, 1-38, 1-50,
4 1-54, 1-55, 1-58, 1-60, 1-61, 1-62, 1-63, 1-70, 1-71, 1-77, 1-78, 1-81, 1-82, 1-83,
5 1-84, 1-85, 1-86, 1-87, 1-88, 1-91, 1-92, 1-93, 1-94, 1-95, 1-97, 1-100, 1-101, 1-104,
6 2-1, 2-2, 2-3, 2-4, 2-5, 2-6, 2-7, 2-8, 2-9, 2-10, 2-11, 2-12, 2-13, 2-14, 2-15, 2-16,
7 2-17, 2-18, 2-19, 2-20, 2-21, 2-22, 2-23, 2-24, 2-25, 2-26, 2-27, 2-28, 2-29, 2-30,
8 2-31, 2-32, 2-33, 2-34, 2-35, 2-36, 2-37, 3-1, 3-2, 3-6, 3-8, 3-9, 3-12, 3-14, 3-21,
9 3-24, 3-25, 3-26, 3-28, 3-30, 3-32, 3-37, 3-46, 3-54, 3-58, 3-61, and 3-72 of East
10 Baton Rouge Parish; East Carroll Parish; East Feliciana Parish; Precincts 1010, 1031,
11 1080, 1081, 1090, 1091, 1100, 1101, 1110, 1120, 1150, 1160, 1162, and 1170 of
12 Evangeline Parish; Franklin Parish; Precincts 1, 2, 3, 4, 5, 6, 7, 8, 9, 10, 11, 12, 13,
13 14, 15, 16, 17, 18, 19, 20, 21, 22, 23, 24, 51, 52, 53, 54, 55, 56, 57, 58, 59, 60, 61, 62,
14 63, 64, 68, 112, 113, 122, and 123 of Lafayette Parish; Madison Parish; Morehouse
15 Parish; Precincts 3, 5, 8, 9, 9A, 10, 11, 12, 13, 14, 15, 16, 17, 18, 19, 20, 21, 22, 23,
16 24, 26, 27, 27A, 28, 29, 30, 59, 60, 62, 63, 65, 65A, 66, 67, 68, 69, 70, 72, 73, 74, 76,
17 and 79 of Ouachita Parish; Pointe Coupee Parish; Precincts C1, C2, C3, C4, C5, C6,
18 C7, C8, C9, C10, C11-A, C11-B, C13, C14, C15, C17, C18, C19, C20, C21, C24,
19 C25, C28, C38-A, C38-B, C39, C40, N2, N3, N4, N9, N10, N27, N28 and N29 of
20 Rapides Parish; Richland Parish; St. Helena Parish; St. Landry Parish; Precincts 1,
21 2, 6, 11, 15, 17, 18, 26, 101, 105, 107, 109, 111A, and 115B of Tangipahoa Parish;
22 Tensas Parish; West Baton Rouge Parish; West Carroll Parish; and West Feliciana
23 Parish.

24 (6) District 6 is composed of Precincts 1, 2, 3, 4, 5, 7, 8, 9, 10, 11, 12, 13, 14,
25 15, 16, 17, 18, 20, 21, 22, 23, 24, 25, 26, 27, 33, 34, 35, 41, 43, 61, 62, 63, 64, 66, 72,
26 73, 76, 77, and 78 of Ascension Parish; Precincts 1-1, 1-3, 1-4, 1-5, 1-7, 1-8, 1-12,
27 1-33, 1-34, 1-35, 1-39, 1-40, 1-41, 1-42, 1-43, 1-44, 1-45, 1-46, 1-47, 1-48, 1-49,
28 1-51, 1-52, 1-53, 1-56, 1-57, 1-59, 1-64, 1-65, 1-66, 1-67, 1-68, 1-69, 1-72, 1-73,
29 1-74, 1-75, 1-76, 1-79, 1-80, 1-89, 1-90, 1-98, 1-99, 1-102, 1-103, 1-105, 1-107, 3-3,

1 3-4, 3-5, 3-7, 3-10, 3-11, 3-13, 3-15, 3-16, 3-17, 3-18, 3-19, 3-20, 3-22, 3-23, 3-27,
2 3-29, 3-31, 3-33, 3-34, 3-35, 3-36, 3-38, 3-39, 3-40, 3-41, 3-43, 3-44, 3-45, 3-47,
3 3-48, 3-49, 3-50, 3-51, 3-52, 3-53, 3-55, 3-56, 3-57, 3-59, 3-60, 3-62, 3-63, 3-64,
4 3-65, 3-66, 3-67, 3-68, 3-69, 3-70, and 3-71 of East Baton Rouge Parish; Livingston
5 Parish; Precincts 101, 102, 103, 104, 105, 106, 107, 108, 110, 111, 112, 113, 114,
6 115, 116, 118, 201, 202, 203, 204, 205, 206, 207, 301, 302, 303, 304, 305, 306, 307,
7 308, 309, 310, 312, 313, 314, 401, 402, 403, 404, 405, 406, 407, 408, 409, 410, 411,
8 412, 413, 414, 415, 416, 417, 418, 419, 420, 421, 422, 426, 427, 429, 430, 501, 502,
9 503, 504, 505, 601, 602, 604, 605, 606, 609, A01, A02, A03, A04, C01, C02, C03,
10 C04, C05, C06, C07, C08, C09, C10, C11, F01, M01, M02, M03, M04, M05, M06,
11 M07, M08, M09, M10, M11, M12, and MD1 of St. Tammany Parish; Precincts 16,
12 27, 28, 33, 40, 40A, 41, 42, 42A, 43, 44, 45, 45A, 46, 47, 48, 49, 70, 70A, 71, 72,
13 72A, 73, 74, 102, 104, 104A, 106, 106A, 108, 110, 112, 114, 116, 117, 118, 119,
14 120, 120A, 120B, 121, 121A, 122, 122A, 122B, 123, 124, 124A, 125, 127, 127A,
15 129, 129A, 133, 133A, 137, 137A, 137B, 137C, 137D, 139, 141, 141A, 143, 143A,
16 145, 147, 149, 149A, and 151 of Tangipahoa Parish; and Washington Parish.

17 Section 2. R.S. 18:1276.1 is hereby repealed in its entirety.

18 Section 3.(A) The precincts referenced in this Act are those precincts identified as
19 Voting Districts (VTDs) in the 2020 Census Redistricting TIGER/Line Shapefiles for the
20 State of Louisiana as validated through the data verification program of the Louisiana House
21 of Representatives and the Louisiana Senate and available on the legislature's website on the
22 effective date of this Section.

23 (B) When a precinct referenced in this Act has been subdivided by action of the
24 parish governing authority on a nongeographic basis or subdivided by action of the parish
25 governing authority on a geographic basis in accordance with the provisions of R.S.
26 18:532.1, the enumeration in this Act of the general precinct designation shall include all
27 nongeographic and all geographic subdivisions thereof, however such subdivisions may be
28 designated.

1 (C) The territorial limits of the districts as provided in this Act shall continue in
2 effect until changed by law regardless of any subsequent change made to the precincts by
3 the parish governing authority.

4 Section 4. The provisions of this Act shall not reduce the term of office of any
5 person holding any position or office on the effective date of this Section for which the
6 appointment or election is based upon a congressional district as composed pursuant to R.S.
7 18:1276.1. Any position or office that is filled by appointment or election based on a
8 congressional district and that is to be filled after January 3, 2023, shall be appointed or
9 elected from a district as it is described in Section 1 of this Act.

10 Section 5.(A) Solely for the purposes of qualifying for election and the election of
11 representatives to the United States Congress at the regularly scheduled election for
12 representatives to the congress in 2022, the provisions of Section 1 of this Act shall become
13 effective upon signature of this Act by the governor or, if not signed by the governor, upon
14 expiration of the time for bills to become law without signature by the governor, as provided
15 in Article III, Section 18 of the Constitution of Louisiana. If this Act is vetoed by the
16 governor and subsequently approved by the legislature, the provisions of Section 1 of this
17 Act shall become effective on the day following such approval for the purposes established
18 in this Subsection.

19 (B) For subsequent elections of representatives to the United States Congress and
20 for all other purposes, the provisions of Section 1 of this Act shall become effective at noon
21 on January 3, 2023.

22 (C) The provisions of Section 2 of this Act shall become effective at noon on
23 January 3, 2023.

24 (D) The provisions of this Section and Sections 3 and 4 of this Act shall become
25 effective upon signature of this Act by the governor or, if not signed by the governor, upon
26 expiration of the time for bills to become law without signature by the governor, as provided
27 in Article III, Section 18 of the Constitution of Louisiana. If this Act is vetoed by the
28 governor and subsequently approved by the legislature, the provisions of this Section and
29 Sections 3 and 4 of this Act shall become effective on the day following such approval.

DIGEST

The digest printed below was prepared by House Legislative Services. It constitutes no part of the legislative instrument. The keyword, one-liner, abstract, and digest do not constitute part of the law or proof or indicia of legislative intent. [R.S. 1:13(B) and 24:177(E)]

HB 8 Original

2022 First Extraordinary Session

Gaines

Abstract: Provides for the redistricting of the state's congressional districts and provides for the composition of each of the six congressional districts. Effective for election purposes only for the regular congressional elections in 2022 and for all other purposes at noon on Jan. 3, 2023.

Statistical summaries of proposed law, including district variances from the ideal population of 776,292 and the range of those variances, as well as maps illustrating proposed district boundaries accompany this digest. (*Attached to the bill version on the internet.*)

Present U.S. Constitution (14th Amendment) provides that representatives in congress shall be apportioned among the several states according to their respective numbers, counting the whole number of persons in each state. The U.S. Supreme Court has held that the population of congressional districts in the same state must be as nearly equal in population as practicable.

Proposed law redraws district boundaries for the six congressional districts, effective upon signature of governor or lapse of time for gubernatorial action for purposes of the 2022 election.

Proposed law retains present districts until noon on January 3, 2023, at which time present law is repealed and proposed districts are effective for all other purposes.

Proposed law specifies that precincts referenced in district descriptions are those precincts identified as Voting Districts (VTDs) in the 2020 Census Redistricting TIGER/Line Shapefiles for the state of La. as validated through the data verification program of the La. legislature. Also specifies that if any such precinct has been subdivided by action of the parish governing authority on a nongeographic basis or subdivided by action of the parish governing authority on a geographic basis in accordance with present law, the enumeration of the general precinct designation shall include all nongeographic and all geographic subdivisions thereof. Further provides that the territorial limits of the districts as enacted shall continue in effect until changed by law regardless of any subsequent change made to the precincts by the parish governing authority.

Proposed law specifies that proposed law does not reduce the term of office of any person holding any position or office on the effective date of proposed law for which the appointment or election is based upon a congressional district as composed pursuant to present law. Specifies that any position or office filled after Jan. 3, 2023, for which the appointment or election is based on a congressional district shall be appointed or elected from a district as it is described in proposed law.

Population data in the summaries accompanying this digest are derived from 2020 Census Redistricting Data (Public Law 94-171), Summary File for Louisiana. Population data, statistical information, and maps are supplied for purposes of information and analysis and comprise no part of proposed law.

Effective for election purposes only for the regular congressional elections in 2022; effective for all other purposes at noon on January 3, 2023.

(Adds R.S. 18:1276; Repeals R.S. 18:1276.1)

Plan Statistics

Plan: 221ES-24 (Gaines)

<u>Districts:</u>	<u># of Members</u>	<u>Actual Population</u>	<u>Ideal Population</u>	<u>Absolute Deviation</u>	<u>Relative Deviation</u>
District 1	1	777,041	776,292	749	0.096%
District 2	1	775,962	776,292	-330	-0.043%
District 3	1	776,400	776,292	108	0.014%
District 4	1	776,406	776,292	114	0.015%
District 5	1	775,705	776,292	-587	-0.076%
District 6	1	776,243	776,292	-49	-0.006%
Grand Total:	6	4,657,757	4,657,752		

Ideal Population Per Member: 776292
 Number of Districts for Plan Type: 6

Range of District Populations: 775,705 to 777,041

Absolute Mean Deviation: 223
 Absolute Range: -587 to 749
 Absolute Overall Range: 1,336

Relative Mean Deviation: 0.04%
 Relative Range: -0.08% to 0.10%
 Relative Overall Range: 0.18%

<i>Ideal - Actual:</i>	-5
<i>Remainder:</i>	5
<i>Unassigned Population:</i>	0

Total Population

Plan: 221ES-24 (Gaines)

	Total Population	Total White	Total Black	Total Asian	Total American Indian	Total Other	Total Hispanic	VAP Total	VAP White	VAP Black	VAP Asian	VAP American Indian	VAP Other	VAP Hispanic Total
District 1	777,041	515,393	139,892	24,197	24,436	73,123	92,000	604,716	418,356	99,058	17,951	17,181	52,170	64,776
	100.000%	66.328%	18.003%	3.114%	3.145%	9.410%	11.840%	100.000%	69.182%	16.381%	2.969%	2.841%	8.627%	10.712%
District 2	775,962	265,223	423,049	24,715	9,044	53,931	69,403	598,536	220,839	313,039	19,568	6,949	38,141	48,154
	100.000%	34.180%	54.519%	3.185%	1.166%	6.950%	8.944%	100.000%	36.897%	52.301%	3.269%	1.161%	6.372%	8.045%
District 3	776,400	555,047	155,429	17,263	14,279	34,382	42,339	587,169	431,604	108,498	12,475	10,529	24,063	29,029
	100.000%	71.490%	20.019%	2.223%	1.839%	4.428%	5.453%	100.000%	73.506%	18.478%	2.125%	1.793%	4.098%	4.944%
District 4	776,406	456,160	261,628	11,716	17,838	29,064	34,680	596,777	363,705	190,044	8,627	13,579	20,822	24,208
	100.000%	58.753%	33.697%	1.509%	2.298%	3.743%	4.467%	100.000%	60.945%	31.845%	1.446%	2.275%	3.489%	4.056%
District 5	775,705	312,541	420,615	9,312	7,898	25,339	29,914	587,023	252,834	303,337	7,048	5,892	17,912	20,681
	100.000%	40.291%	54.224%	1.200%	1.018%	3.267%	3.856%	100.000%	43.071%	51.674%	1.201%	1.004%	3.051%	3.523%
District 6	776,243	553,288	142,506	20,085	13,565	46,799	54,213	596,327	437,173	101,793	14,747	10,110	32,504	36,814
	100.000%	71.278%	18.358%	2.587%	1.748%	6.029%	6.984%	100.000%	73.311%	17.070%	2.473%	1.695%	5.451%	6.173%
Grand Total	4,657,757	2,657,652	1,543,119	107,288	87,060	262,638	322,549	3,570,548	2,124,511	1,115,769	80,416	64,240	185,612	223,662
	100.000%	57.059%	33.130%	2.303%	1.869%	5.639%	6.925%	100.000%	59.501%	31.249%	2.252%	1.799%	5.198%	6.264%

Voter Registration

Plan: 221ES-24 (Gaines)

	Reg Total Dec 2021	Reg White Dec 2021	Reg Black Dec 2021	Reg Other Dec 2021	Reg Dem Total Dec 2021	Reg Rep Total Dec 2021	Reg Other Total Dec 2021
District 1	480,994	367,791	70,316	42,887	154,856	182,853	143,285
	79.540%	76.465%	14.619%	8.916%	32.195%	38.016%	29.789%
District 2	495,575	186,305	270,754	38,516	291,756	79,400	124,419
	82.798%	37.594%	54.634%	7.772%	58.872%	16.022%	25.106%
District 3	468,902	367,110	80,550	21,242	147,596	193,079	128,227
	79.858%	78.291%	17.178%	4.530%	31.477%	41.177%	27.346%
District 4	478,748	310,297	149,155	19,296	175,105	184,863	118,780
	80.222%	64.814%	31.155%	4.031%	36.576%	38.614%	24.811%
District 5	490,103	214,775	259,987	15,341	260,832	116,566	112,705
	83.490%	43.822%	53.047%	3.130%	53.220%	23.784%	22.996%
District 6	480,024	381,711	71,986	26,327	130,859	212,019	137,146
	80.497%	79.519%	14.996%	5.485%	27.261%	44.168%	28.571%
Grand Total	2,894,346	1,827,989	902,748	163,609	1,161,004	968,780	764,562

Splits

Plan: 221ES-24 (Gaines)

	Total Population	Total White	Total Black	Total Asian	Total American Indian	Total Other	VAP Total	VAP White	VAP Black	VAP Asian	VAP American Indian	VAP Other	Reg Total Dec 2021	Reg White Dec 2021	Reg Black Dec 2021	Reg Other Dec 2021
District 1																
*Iberia	19,810	14,843	3,594	308	260	805	15,065	11,575	2,517	186	199	588	13,985	11,246	2,311	428
*Jefferson	238,074	153,014	31,164	11,614	4,262	38,020	190,739	128,160	22,912	8,769	3,218	27,680	146,178	114,226	13,051	18,901
Lafourche	97,557	71,710	15,855	1,025	4,224	4,743	74,619	56,838	11,077	738	2,777	3,189	58,278	48,467	7,164	2,647
*Orleans	77,895	60,031	8,362	3,057	937	5,508	65,172	50,728	7,056	2,391	756	4,241	54,565	43,805	4,976	5,784
Plaquemines	23,515	14,287	5,428	1,317	697	1,786	17,334	10,856	3,857	925	500	1,196	13,908	9,513	3,134	1,261
St. Bernard	43,764	24,497	12,309	1,381	947	4,630	31,775	18,992	7,944	982	688	3,169	25,653	18,233	5,497	1,923
*St. Charles	15,625	12,674	1,529	229	370	823	11,591	9,644	977	142	264	564	10,667	9,339	884	444
*St. Martin	1,368	1,285	13	7	34	29	1,154	1,091	11	5	30	17	993	979	1	13
*St. Mary	40,981	24,175	10,868	732	1,519	3,687	31,069	19,304	7,712	527	1,072	2,454	24,371	16,801	6,167	1,403
*St. Tammany	108,872	68,943	27,623	2,784	2,549	6,973	83,693	55,537	19,199	2,047	1,927	4,983	70,676	49,787	15,565	5,324
Terrebonne	109,580	69,934	23,147	1,743	8,637	6,119	82,505	55,631	15,796	1,239	5,750	4,089	61,720	45,395	11,566	4,759
District 1	777,041	515,393	139,892	24,197	24,436	73,123	604,716	418,356	99,058	17,951	17,181	52,170	480,994	367,791	70,316	42,887
	100.000%	66.328%	18.003%	3.114%	3.145%	9.410%	100.000%	69.182%	16.381%	2.969%	2.841%	8.627%	79.540%	76.465%	14.619%	8.916%
District 2																
*Ascension	37,224	14,462	19,212	434	495	2,621	27,229	11,374	13,459	321	343	1,732	23,256	10,304	11,779	1,173
Assumption	21,039	13,722	6,220	96	258	743	16,616	11,145	4,707	57	197	510	14,439	9,700	4,510	229
*Iberia	28,657	11,154	14,962	1,113	257	1,171	21,458	9,157	10,437	846	179	839	16,492	7,200	8,466	826
Iberville	30,241	14,833	13,730	202	274	1,202	24,086	12,462	10,232	149	221	1,022	20,462	10,132	9,897	433
*Jefferson	202,707	67,921	95,053	11,410	3,424	24,899	153,915	55,975	69,263	8,923	2,617	17,137	116,923	45,390	56,525	15,008
*Orleans	306,102	66,431	210,607	9,799	2,729	16,536	241,024	59,524	159,012	8,129	2,192	12,167	201,679	48,181	136,549	16,949
*St. Charles	36,924	20,876	12,399	608	555	2,486	27,950	16,510	8,913	387	403	1,737	24,318	14,970	7,913	1,435
St. James	20,192	9,973	9,762	60	82	315	15,505	7,883	7,297	31	64	230	14,966	7,254	7,501	211
St. John the Baptist	42,477	13,877	25,196	403	465	2,536	32,503	11,622	18,437	323	350	1,771	28,913	10,219	17,234	1,460
*St. Martin	50,399	31,974	15,908	590	505	1,422	38,250	25,187	11,282	402	383	996	34,127	22,955	10,380	792
District 2	775,962	265,223	423,049	24,715	9,044	53,931	598,536	220,839	313,039	19,568	6,949	38,141	495,575	186,305	270,754	38,516
	100.000%	34.180%	54.519%	3.185%	1.166%	6.950%	100.000%	36.897%	52.301%	3.269%	1.161%	6.372%	82.798%	37.594%	54.634%	7.772%
District 3																
Acadia	57,576	44,480	10,864	238	573	1,421	42,943	34,071	7,383	173	400	916	37,678	30,555	6,407	716
Allen	22,750	16,327	4,490	246	947	740	17,510	12,751	3,275	182	646	656	12,201	9,478	2,217	506
Beauregard	36,549	29,529	4,649	402	1,052	917	27,489	22,304	3,495	269	773	648	22,294	18,771	2,369	1,154
Calcasieu	216,785	139,772	59,386	4,702	3,536	9,389	163,166	108,789	41,898	3,359	2,604	6,516	120,511	85,659	29,513	5,339
Cameron	5,617	5,232	125	30	75	155	4,358	4,100	79	23	47	109	4,789	4,610	88	91
*Evangeline	23,988	18,552	3,854	176	242	1,164	18,192	14,131	2,726	132	190	1,013	15,120	12,680	2,170	270
*Iberia	21,462	13,209	6,000	702	277	1,274	16,268	10,563	4,115	530	203	857	14,049	9,841	3,575	633
Jefferson Davis	32,250	25,066	5,837	183	472	692	24,039	19,121	4,006	111	325	476	20,013	16,350	3,202	461

Splits

Plan: 221ES-24 (Gaines)

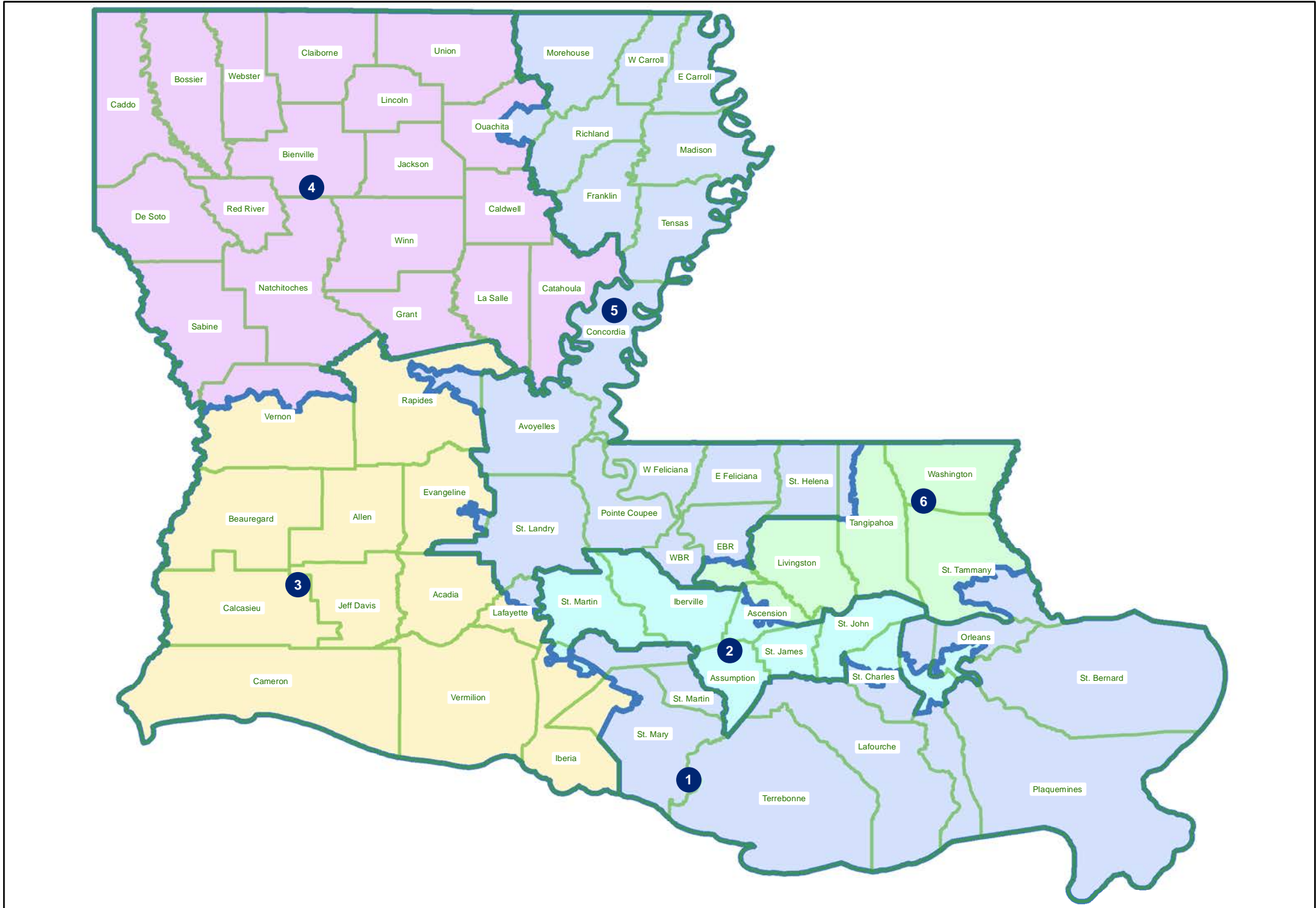
	Total Population	Total White	Total Black	Total Asian	Total American Indian	Total Other	VAP Total	VAP White	VAP Black	VAP Asian	VAP American Indian	VAP Other	Reg Total Dec 2021	Reg White Dec 2021	Reg Black Dec 2021	Reg Other Dec 2021
District 3																
*Lafayette	170,390	125,633	25,993	5,874	2,565	10,325	130,427	99,150	17,864	4,263	1,952	7,198	108,694	89,725	12,482	6,487
*Rapides	81,900	61,523	12,910	1,816	2,422	3,229	62,794	48,411	9,056	1,327	1,828	2,172	51,872	42,608	6,823	2,441
*St. Mary	8,425	2,774	5,123	103	151	274	6,452	2,290	3,808	66	101	187	5,839	1,911	3,724	204
Vermilion	57,359	44,477	8,810	1,447	623	2,002	43,012	34,363	5,787	1,037	488	1,337	36,769	30,505	4,994	1,270
*Vernon	41,349	28,473	7,388	1,344	1,344	2,800	30,519	21,560	5,006	1,003	972	1,978	19,073	14,417	2,986	1,670
District 3	776,400	555,047	155,429	17,263	14,279	34,382	587,169	431,604	108,498	12,475	10,529	24,063	468,902	367,110	80,550	21,242
	100.000%	71.490%	20.019%	2.223%	1.839%	4.428%	100.000%	73.506%	18.478%	2.125%	1.793%	4.098%	79.858%	78.291%	17.178%	4.530%
District 4																
Bienville	12,981	6,950	5,600	57	207	167	10,073	5,486	4,284	30	162	111	8,847	4,843	3,917	87
Bossier	128,746	81,052	32,551	3,492	3,273	8,378	95,876	62,931	22,440	2,448	2,477	5,580	69,743	50,861	14,838	4,044
Caddo	237,848	103,457	119,304	4,034	3,840	7,213	182,407	85,059	86,359	3,008	2,958	5,023	151,296	73,113	71,249	6,934
Caldwell	9,645	7,646	1,632	51	150	166	7,478	5,969	1,224	46	116	123	6,031	5,124	818	89
Catahoula	8,906	5,776	2,395	46	119	570	6,951	4,557	1,736	33	87	538	6,467	4,639	1,770	58
Claiborne	14,170	7,263	6,360	88	185	274	11,507	6,258	4,824	55	140	230	8,598	4,632	3,820	146
De Soto	26,812	15,284	9,973	117	740	698	20,440	11,909	7,425	86	557	463	18,713	11,330	6,810	573
Grant	22,169	17,709	3,335	133	644	348	17,527	13,964	2,717	97	507	242	12,688	11,174	1,176	338
Jackson	15,031	9,967	4,166	175	255	468	11,783	7,967	3,125	140	174	377	9,449	6,647	2,610	192
La Salle	14,791	11,348	1,422	283	372	1,366	11,563	8,636	1,065	264	271	1,327	8,792	7,978	637	177
Lincoln	48,396	26,034	19,364	892	662	1,444	38,655	21,306	15,119	744	526	960	25,649	15,672	9,016	961
Natchitoches	37,515	19,361	15,725	255	861	1,313	29,349	16,010	11,415	198	683	1,043	23,107	12,850	9,224	1,033
*Ouachita	90,391	72,679	10,981	1,396	2,092	3,243	68,357	56,173	7,345	975	1,628	2,236	57,839	50,524	5,320	1,995
Red River	7,620	4,195	3,106	25	171	123	5,714	3,338	2,164	3	116	93	5,631	3,130	2,418	83
Sabine	22,155	15,036	3,861	94	2,723	441	17,064	12,054	2,655	66	1,970	319	14,547	11,023	2,184	1,340
Union	21,107	14,460	5,224	62	338	1,023	16,632	11,807	3,861	39	254	671	15,221	11,066	3,692	463
*Vernon	7,401	6,614	223	98	256	210	5,742	5,205	127	71	188	151	4,987	4,765	25	197
Webster	36,967	22,735	12,679	208	687	658	28,753	18,144	9,464	154	558	433	22,737	14,938	7,339	460
Winn	13,755	8,594	3,727	210	263	961	10,906	6,932	2,695	170	207	902	8,406	5,988	2,292	126
District 4	776,406	456,160	261,628	11,716	17,838	29,064	596,777	363,705	190,044	8,627	13,579	20,822	478,748	310,297	149,155	19,296
	100.000%	58.753%	33.697%	1.509%	2.298%	3.743%	100.000%	60.945%	31.845%	1.446%	2.275%	3.489%	80.222%	64.814%	31.155%	4.031%
District 5																
Avoyelles	39,693	25,625	11,678	434	767	1,189	30,578	20,269	8,311	379	570	1,049	23,426	16,534	6,294	598
Concordia	18,687	10,275	7,725	122	233	332	14,217	8,108	5,613	100	167	229	11,964	7,222	4,540	202
*East Baton Rouge	232,173	61,027	153,505	4,507	1,966	11,168	173,429	49,386	111,565	3,360	1,545	7,573	143,863	44,029	93,729	6,105
East Carroll	7,459	2,054	5,272	29	43	61	5,901	1,773	4,043	19	27	39	4,709	1,306	3,359	44
East Feliciana	19,539	11,516	7,341	91	262	329	16,183	9,740	5,918	61	198	266	13,600	7,959	5,186	455

Splits

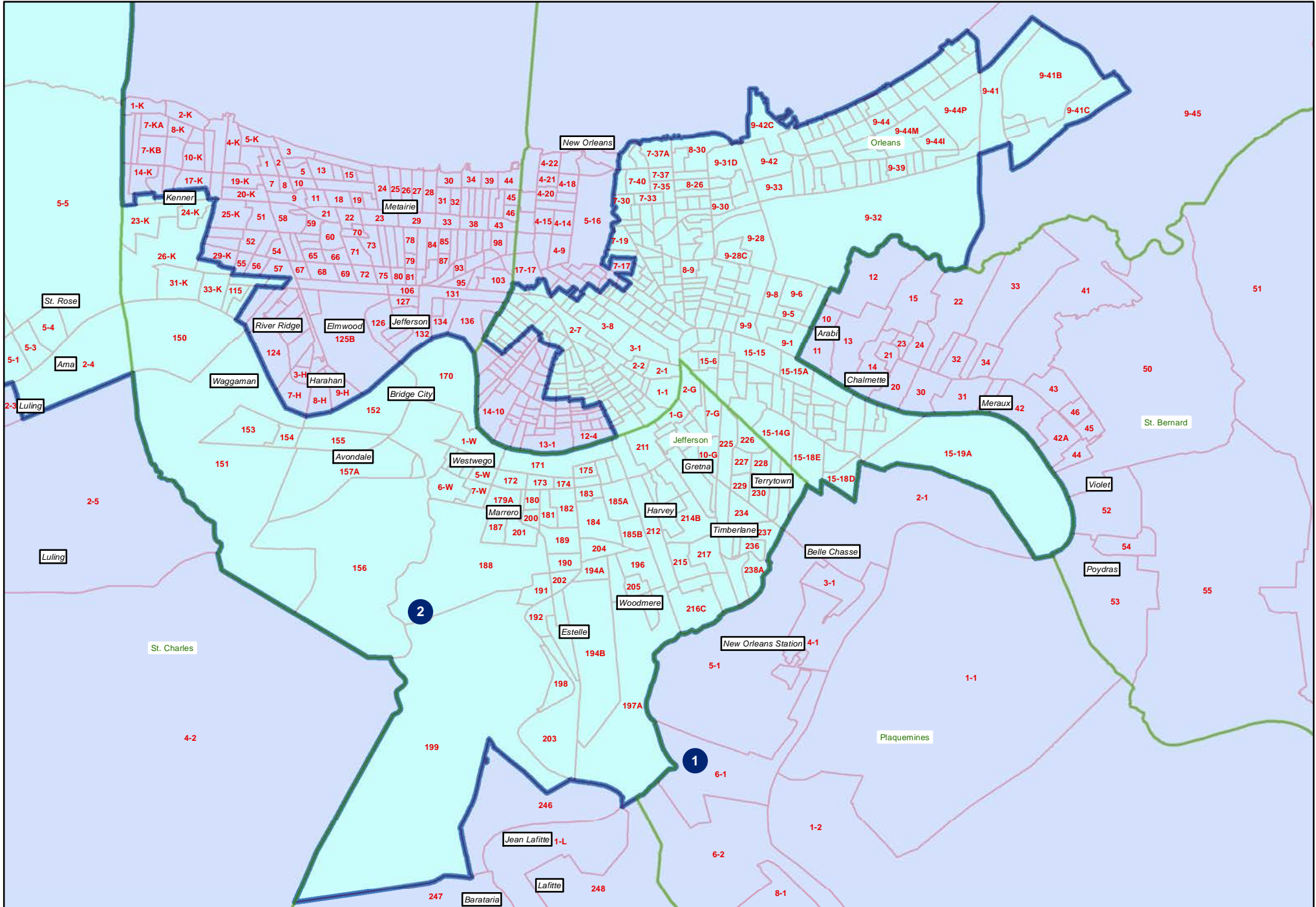
Plan: 221ES-24 (Gaines)

	Total Population	Total White	Total Black	Total Asian	Total American Indian	Total Other	VAP Total	VAP White	VAP Black	VAP Asian	VAP American Indian	VAP Other	Reg Total Dec 2021	Reg White Dec 2021	Reg Black Dec 2021	Reg Other Dec 2021
District 5																
*Evangeline	8,362	2,802	5,381	65	38	76	6,216	2,329	3,757	55	27	48	5,433	1,886	3,473	74
Franklin	19,774	12,492	6,802	70	205	205	15,028	9,901	4,779	44	153	151	13,159	9,015	4,034	110
*Lafayette	71,363	27,730	39,143	580	645	3,265	53,448	22,458	28,053	401	435	2,101	44,799	18,920	23,999	1,880
Madison	10,017	3,475	6,363	20	59	100	7,435	2,906	4,391	9	48	81	7,278	2,494	4,674	110
Morehouse	25,629	12,281	12,484	160	370	334	20,062	10,095	9,300	117	279	271	16,922	8,505	8,131	286
*Ouachita	69,977	15,866	50,236	1,392	569	1,914	51,843	13,801	34,945	1,143	431	1,523	41,913	9,991	30,338	1,584
Pointe Coupee	20,758	12,395	7,504	107	159	593	16,250	10,108	5,502	91	119	430	14,675	9,320	5,121	234
*Rapides	48,123	15,987	29,682	612	680	1,162	35,998	12,962	21,149	459	506	922	28,304	10,224	16,952	1,128
Richland	20,043	11,785	7,603	83	258	314	15,383	9,338	5,546	66	203	230	13,662	8,470	4,961	231
St. Helena	10,920	4,527	6,031	39	134	189	8,463	3,805	4,371	28	109	150	8,321	3,628	4,565	128
St. Landry	82,540	43,611	35,836	499	636	1,958	61,811	34,209	25,497	353	451	1,301	54,482	30,093	23,005	1,384
*Tangipahoa	14,241	4,265	9,382	76	117	401	10,702	3,548	6,759	66	72	257	8,552	2,734	5,624	194
Tensas	4,147	1,744	2,312	23	26	42	3,235	1,446	1,728	12	23	26	3,455	1,503	1,917	35
West Baton Rouge	27,199	14,307	11,170	287	326	1,109	20,526	11,146	8,149	209	219	803	17,141	9,937	6,865	339
West Carroll	9,751	7,894	1,425	27	180	225	7,532	6,223	1,010	20	136	143	7,038	5,913	1,040	85
West Feliciana	15,310	10,883	3,740	89	225	373	12,783	9,283	2,951	56	174	319	7,407	5,092	2,180	135
District 5	775,705	312,541	420,615	9,312	7,898	25,339	587,023	252,834	303,337	7,048	5,892	17,912	490,103	214,775	259,987	15,341
	100.000%	40.291%	54.224%	1.200%	1.018%	3.267%	100.000%	43.071%	51.674%	1.201%	1.004%	3.051%	83.490%	43.822%	53.047%	3.130%
District 6																
*Ascension	89,276	66,679	13,004	1,866	1,509	6,218	64,728	49,762	8,680	1,193	1,047	4,046	56,661	46,496	7,035	3,130
*East Baton Rouge	224,608	135,042	59,893	11,918	2,761	14,994	182,183	114,495	45,225	9,239	2,202	11,022	135,401	94,203	30,946	10,252
Livingston	142,282	116,855	12,658	1,697	3,111	7,961	105,141	88,432	8,136	1,099	2,311	5,163	84,568	76,062	5,425	3,081
*St. Tammany	155,698	127,698	11,020	2,990	3,111	10,879	118,535	99,084	7,562	2,028	2,234	7,627	108,103	95,937	5,577	6,589
*Tangipahoa	118,916	77,071	32,497	1,398	2,337	5,613	90,789	61,657	22,458	1,034	1,755	3,885	67,704	50,178	14,901	2,625
Washington	45,463	29,943	13,434	216	736	1,134	34,951	23,743	9,732	154	561	761	27,587	18,835	8,102	650
District 6	776,243	553,288	142,506	20,085	13,565	46,799	596,327	437,173	101,793	14,747	10,110	32,504	480,024	381,711	71,986	26,327
	100.000%	71.278%	18.358%	2.587%	1.748%	6.029%	100.000%	73.311%	17.070%	2.473%	1.695%	5.451%	80.497%	79.519%	14.996%	5.485%

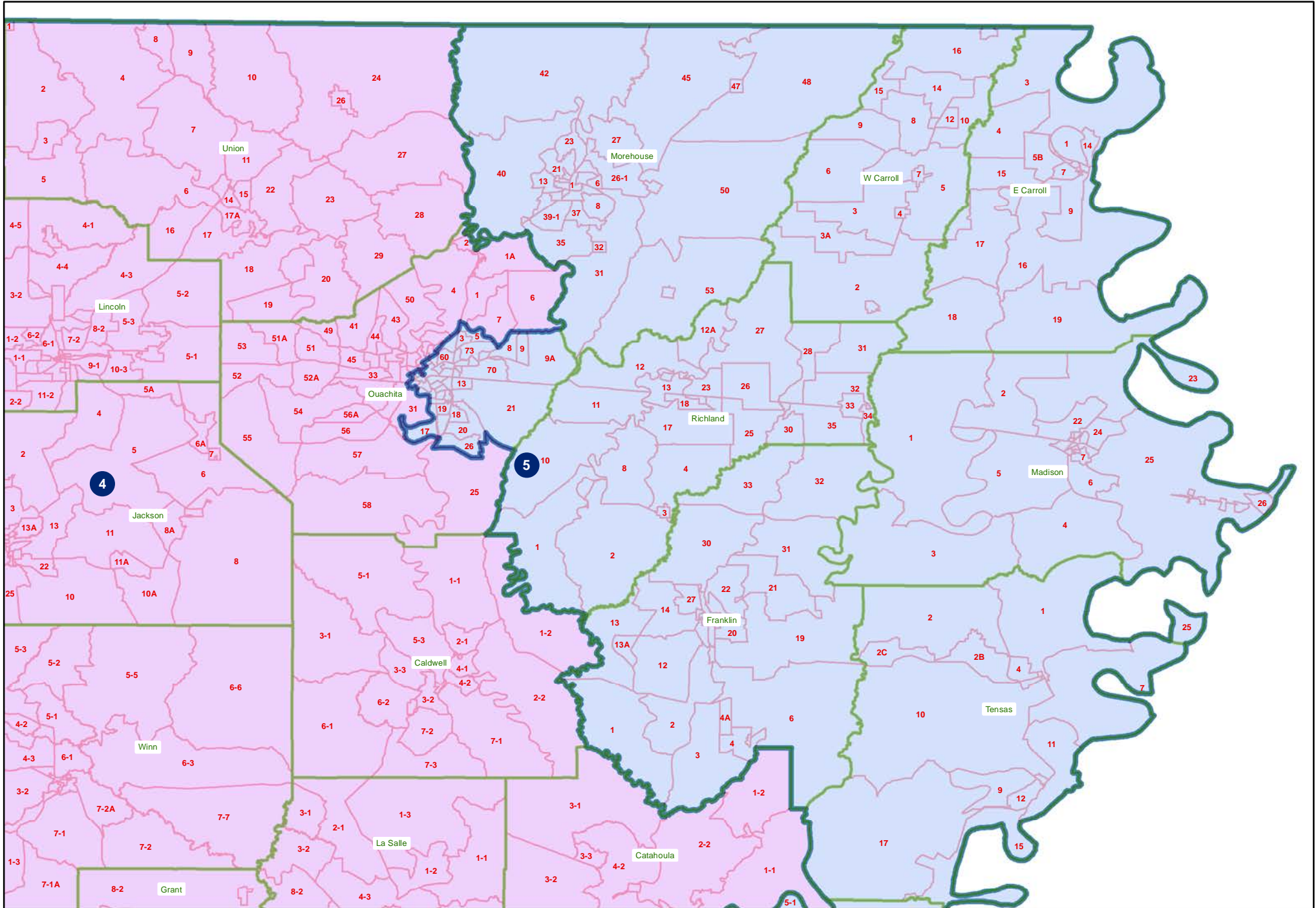
221ES-24 (Gaines)
Statewide



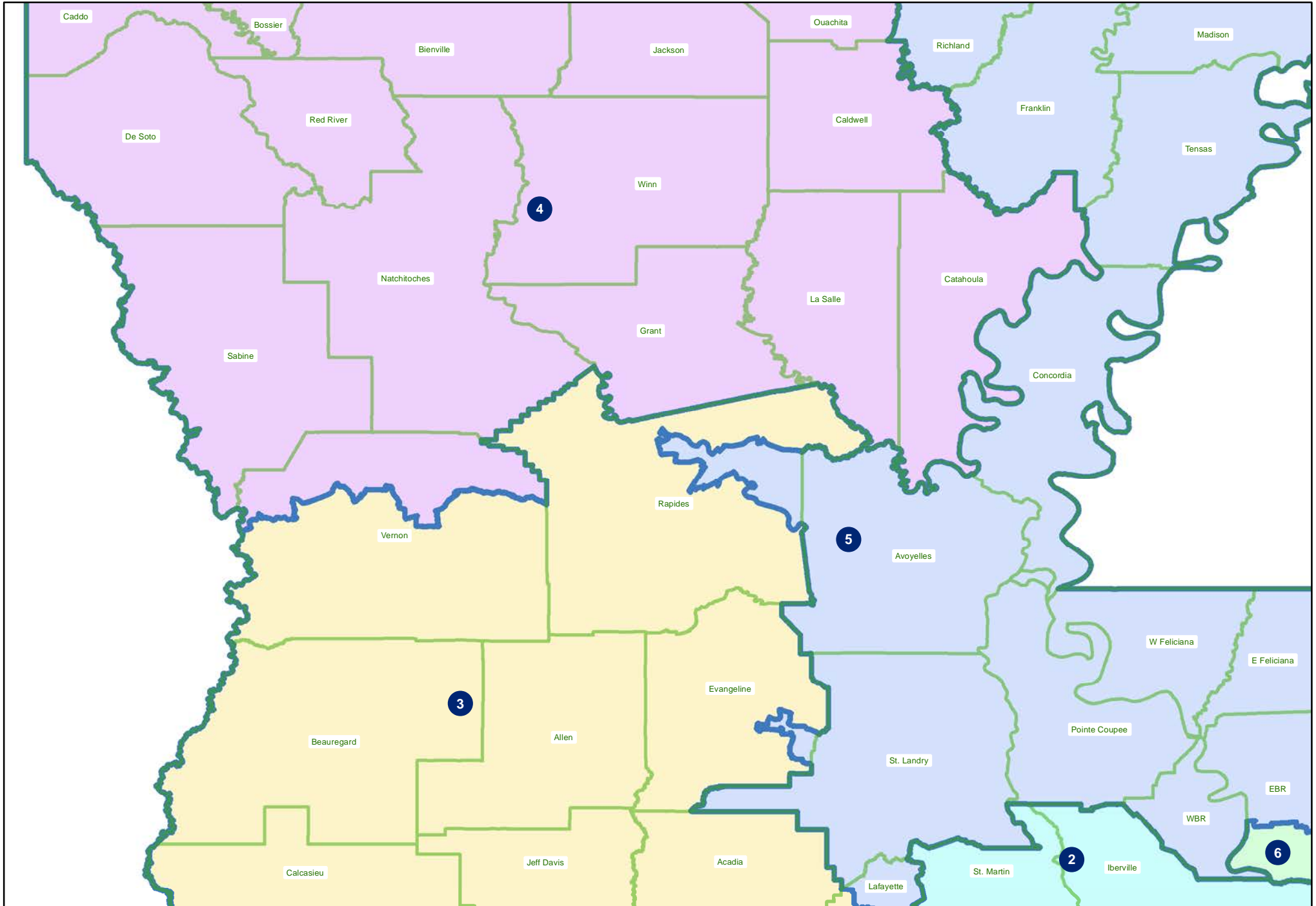
221ES-24 (Gaines)
Orleans and Jefferson



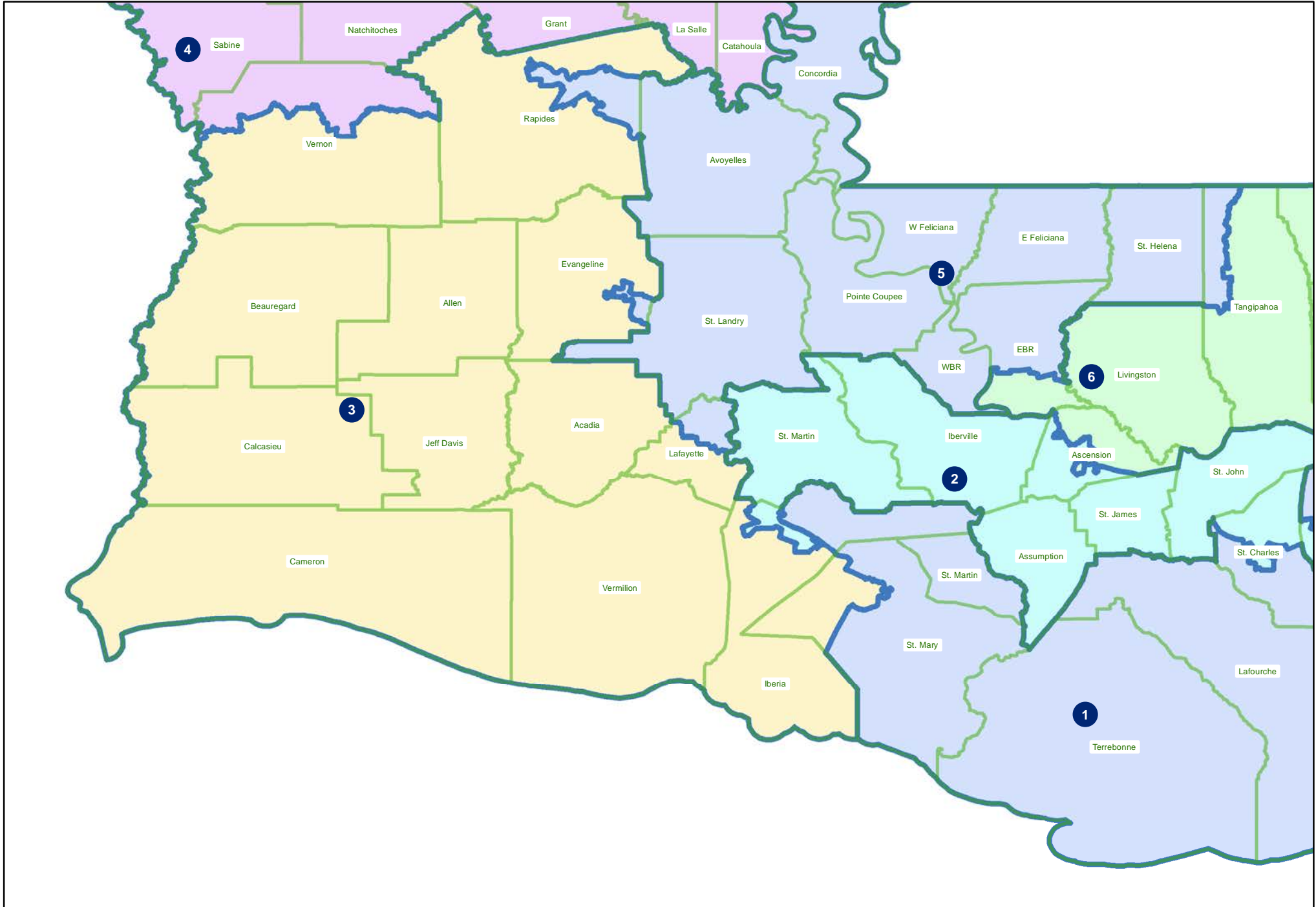
221ES-24 (Gaines)
Northeast



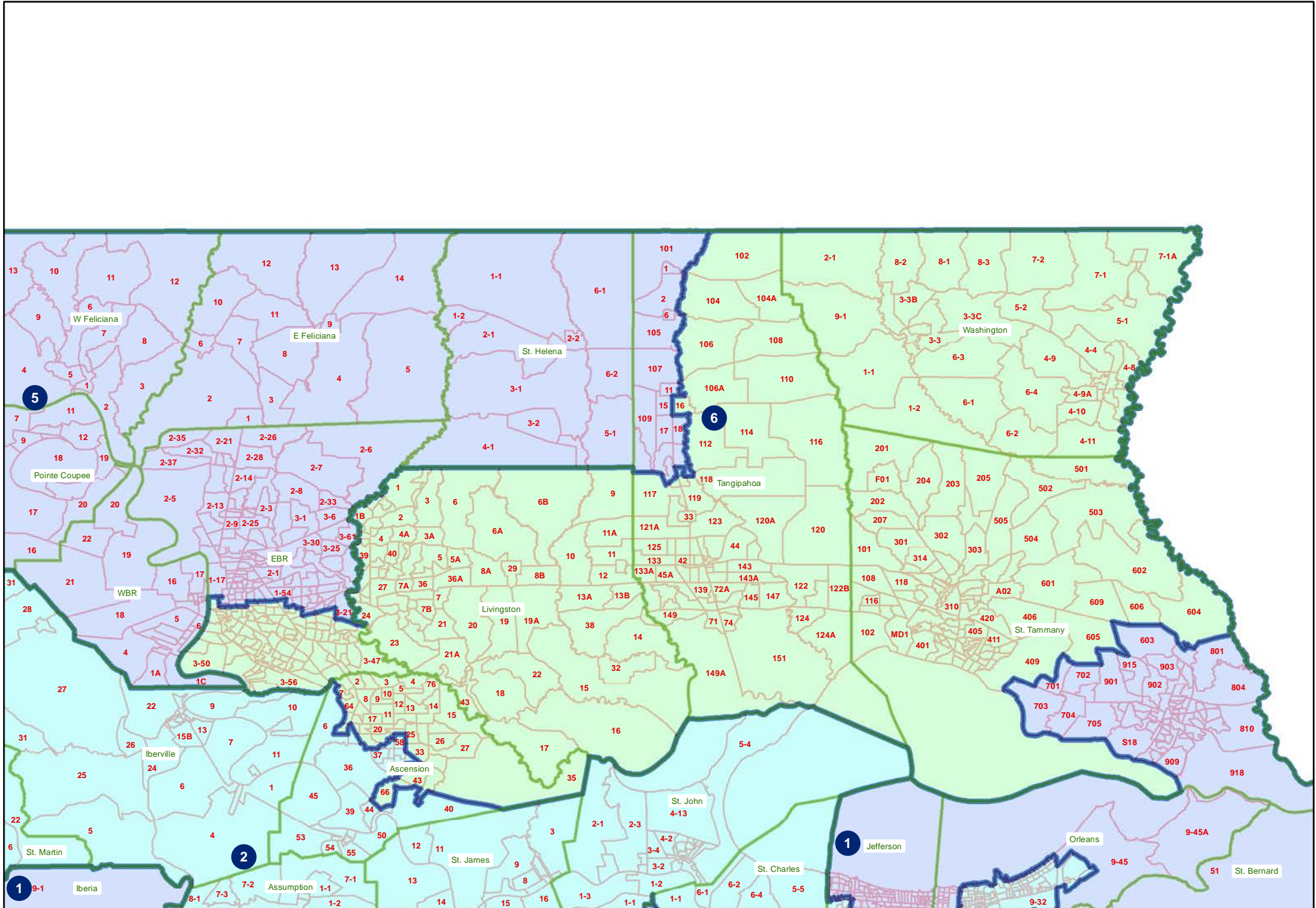
221ES-24 (Gaines)
Central



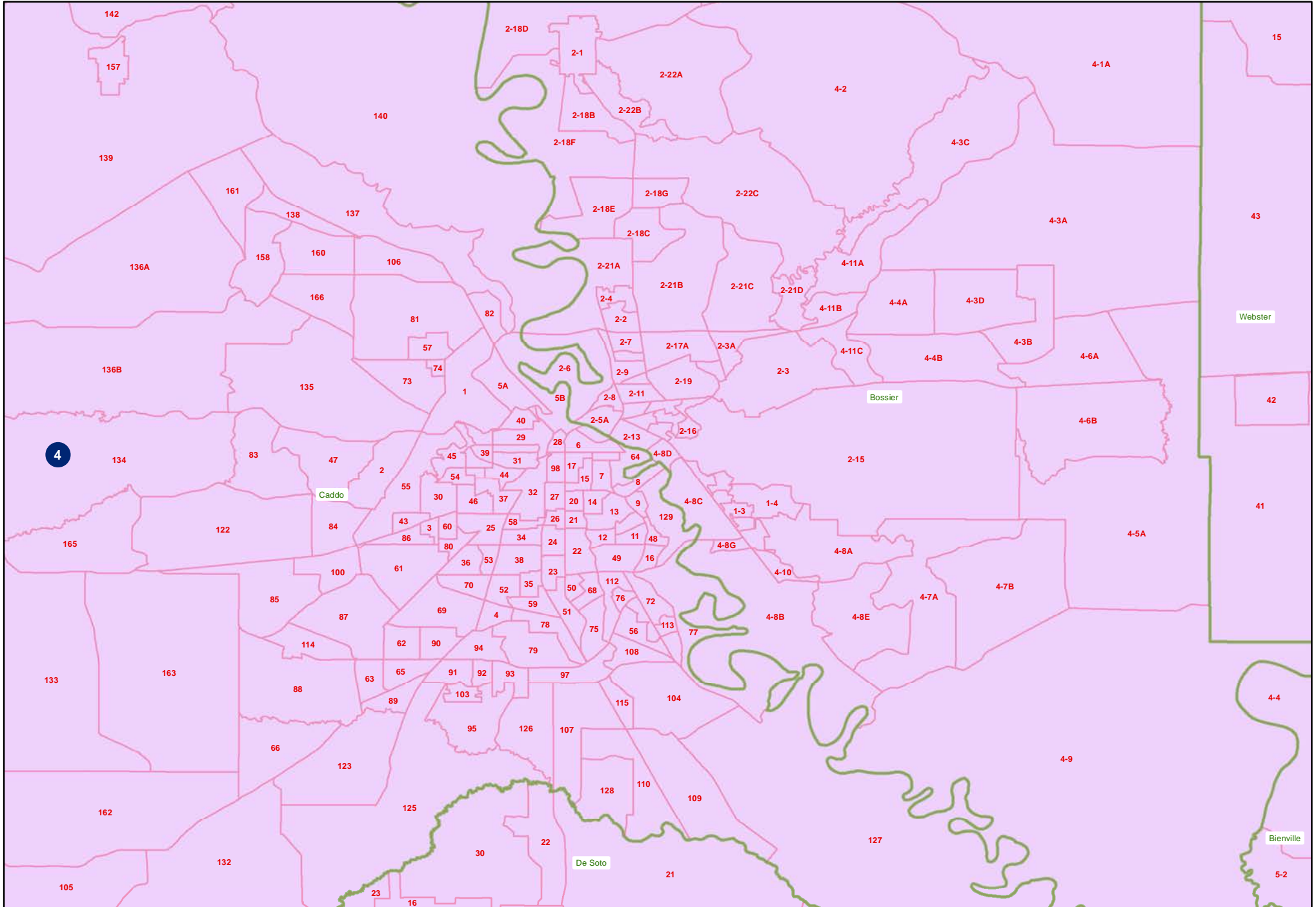
221ES-24 (Gaines)
Southwest



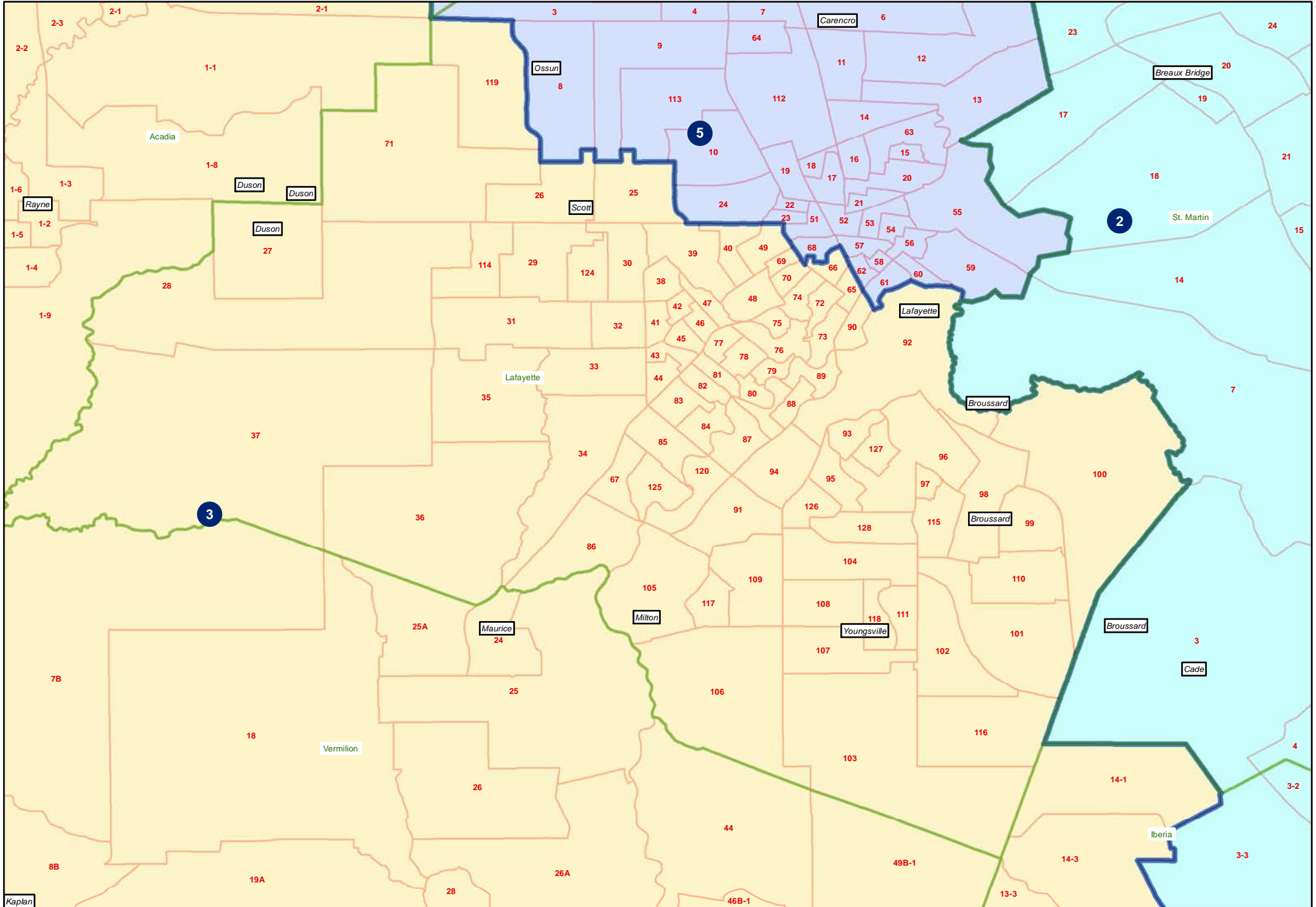
221ES-24 (Gaines) Florida Parishes



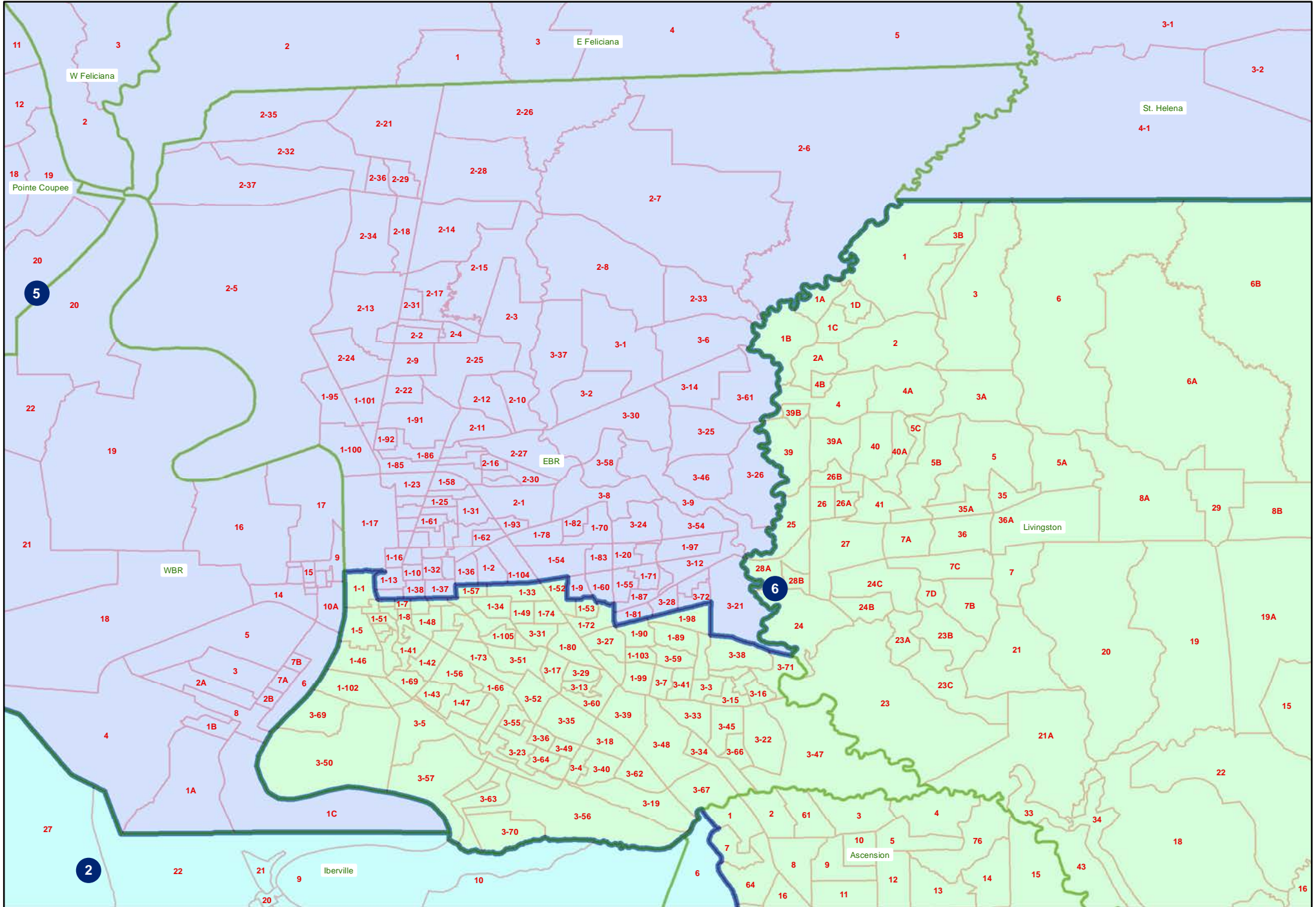
221ES-24 (Gaines) Shreveport



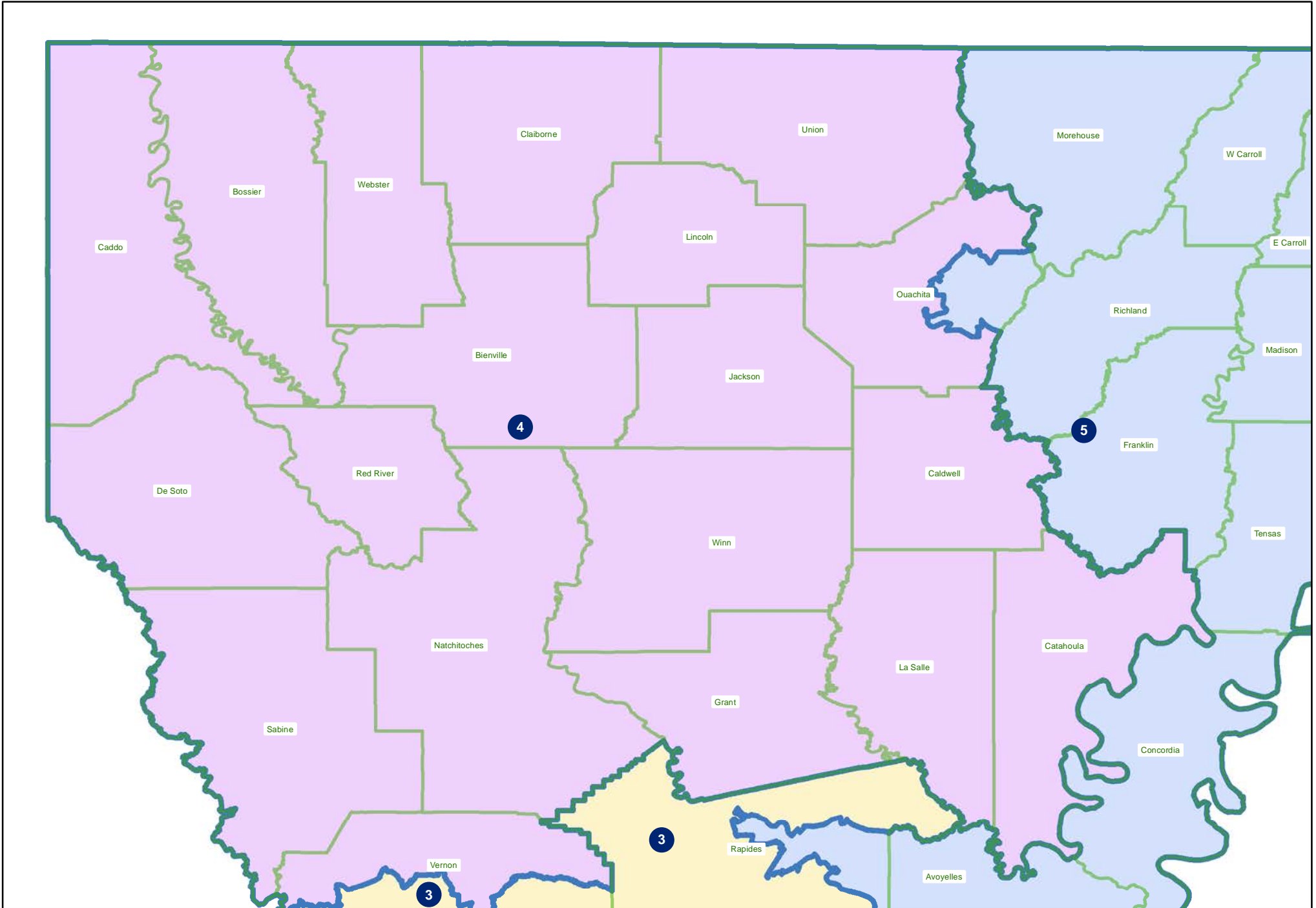
221ES-24 (Gaines) Lafayette



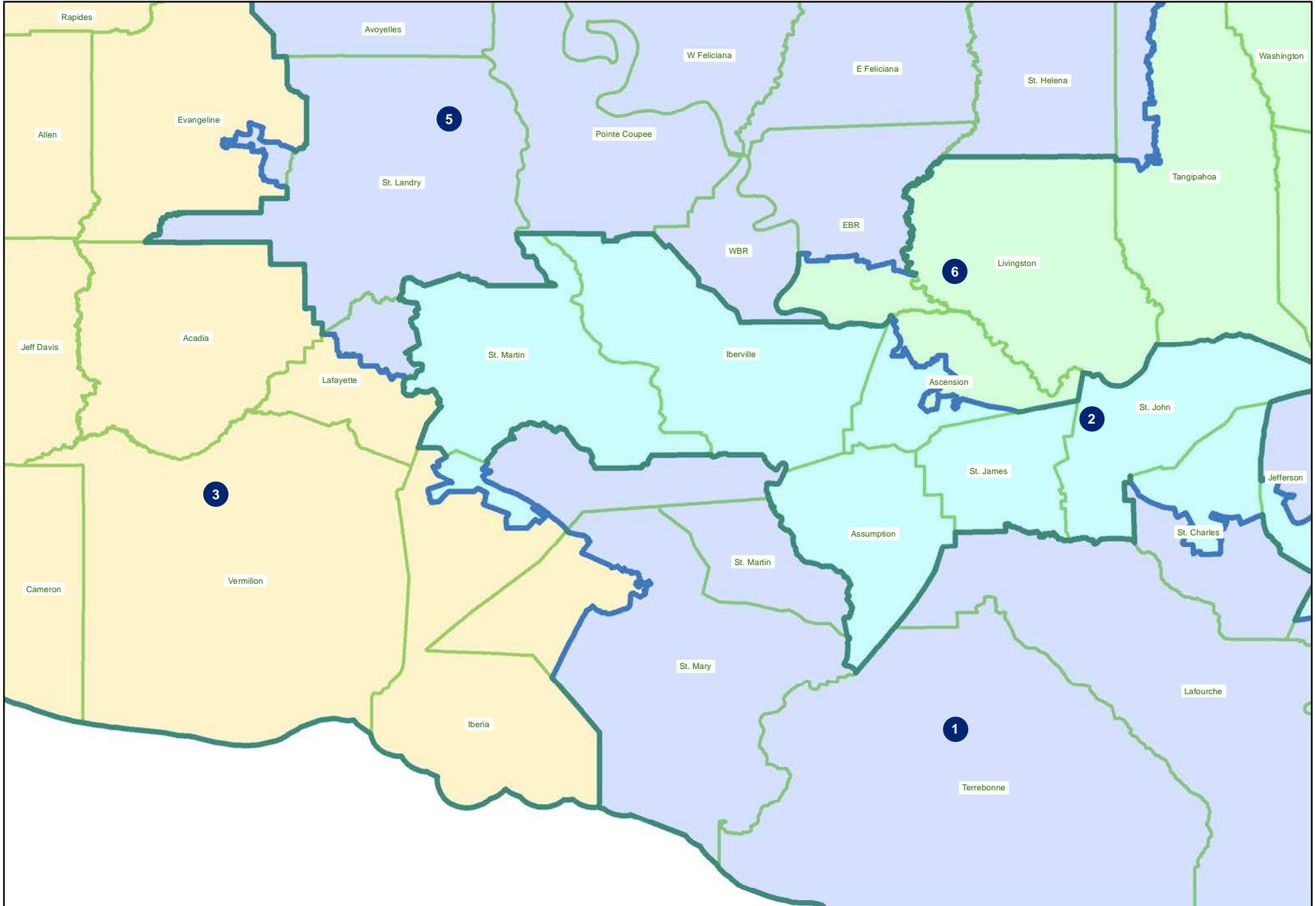
221ES-24 (Gaines) Baton Rouge



221ES-24 (Gaines)
Northwest



221ES-24 (Gaines)
Acadiana



221ES-24 (Gaines)
Monroe

