

2022 Regular Session

HOUSE BILL NO. 815

BY REPRESENTATIVE JEFFERSON

REAPPORTIONMENT/BESE: Provides relative to the election districts for the Board of Elementary and Secondary Education

1 AN ACT

2 To enact R.S. 17:2.2 and to repeal R.S. 17:2.1 and Act No. 3 of the 2022 First Extraordinary
3 Session of the Legislature, relative to redistricting; to provide for election districts
4 for the State Board of Elementary and Secondary Education; to provide for election
5 of members; to provide for effectiveness; and to provide for related matters.

6 Be it enacted by the Legislature of Louisiana:

7 Section 1. R.S. 17:2.2 is hereby enacted to read as follows:

8 §2.2. Districts for election of members of the State Board of Elementary and
9 Secondary Education

10 Louisiana shall be divided into eight districts for the election of eight of the
11 members of the State Board of Elementary and Secondary Education. One member
12 shall be elected from each of the following districts:

- 13 (1) District 1 is composed of Precincts 1, 2, 3, 4, 5, 7, 8, 9, 10, 11, 12, 13, 14,
- 14 15, 16, 17, 18, 19, 20, 21, 22, 23, 24, 25, 26, 27, 28, 29, 30, 31, 32, 33, 34, 35, 36, 37,
- 15 38, 39, 40, 41, 42, 43, 44, 45, 46, 51, 52, 53, 54, 55, 56, 58, 59, 60, 61, 62, 63, 64, 65,
- 16 66, 67, 68, 69, 70, 71, 72, 73, 74, 75, 76, 77, 78, 79, 80, 81, 82, 83, 84, 85, 86, 87, 88,
- 17 89, 90, 91, 92, 93, 94, 95, 96, 97, 98, 99, 100, 101, 102, 103, 105, 106, 116, 117, 118,
- 18 119, 120, 121, 122, 123, 124, 125A, 125B, 126, 127, 128, 129, 130, 132, 134, 136,
- 19 138, 170, 171, 172, 175, 176, 177, 178, 179A, 182, 183, 184, 185A, 189, 190, 204,
- 20 1-H, 2-H, 3-H, 4-H, 5-H, 6-H, 7-H, 8-H, 9-H, 1-K, 2-K, 3-K, 4-K, 5-K, 6-KA, 6-KB,

1 7-KA, 7-KB, 8-K, 9-K, 10-K, 11-K, 12-K, 13-KA, 14-K, 16-K, 17-K, 18-K, 19-K,
2 20-K, 25-K, 27-K, 28-K, 29-K, 34-K, 35-K, 1-W, 3-W, 4-W, 5-W, 6-W, and 7-W
3 of Jefferson Parish; Precincts 3-20, 4-7, 4-8, 4-9, 4-11, 4-14, 4-15, 4-17, 4-17A,
4 4-18, 4-20, 4-21, 4-22, 4-23, 5-15, 5-16, 5-17, 5-18, 7-41, 7-42, 13-4, 13-6, 13-7,
5 13-8, 13-9, 13-10, 14-1, 14-2, 14-3, 14-4, 14-5, 14-6, 14-7, 14-8, 14-9, 14-10, 14-11,
6 14-12, 14-13A, 14-14, 14-15, 14-16, 14-17, 14-18A, 14-19, 14-20, 14-21, 16-1,
7 16-1A, 16-2, 17-1, 17-17, 17-18, 17-18A, 17-19, and 17-20 of Orleans Parish;
8 St. Bernard Parish; and Precincts 102, 103, 104, 105, 106, 107, 108, 110, 111, 112,
9 113, 114, 115, 116, 118, 306, 307, 309, 310, 312, 313, 401, 402, 403, 404, 405, 406,
10 407, 408, 409, 410, 411, 412, 413, 414, 415, 416, 417, 418, 419, 420, 421, 422, 426,
11 427, 429, 430, 603, 604, 605, 606, 609, 701, 702, 703, 704, 705, 706, 801, 802, 803,
12 804, 805, 806, 807, 808, 809, 810, 811, 812, 813, 814, 815, 816, 817, 818, 901, 902,
13 903, 904, 905, 906, 907, 909, 910, 911, 912, 913, 914, 915, 916, 917, 918, 921, 922,
14 C01, C02, C03, C04, C05, C06, C07, C08, C10, M01, M02, M03, M04, M05, M06,
15 M07, M08, M09, M10, M11, M12, MD1, P01, S01, S02, S03, S04, S05, S06, S07,
16 S08, S09, S10, S11, S13, S15, S16, S17, S18, S19, S20, S21, S22, S23, S24, and S25
17 of St. Tammany Parish.

18 (2) District 2 is composed of Precincts 1-1, 1-2, 2-1, 2-2, 2-5, 4-1, 4-2, 4-3,
19 5-1, 5-5, 6-1, 6-2, 6-3, and 7-1 of Assumption Parish; Precincts 57, 104, 108, 115,
20 131, 133, 150, 151, 152, 153, 154, 155, 156, 157A, 157B, 173, 174, 179B, 180, 181,
21 185B, 187, 188, 191, 194A, 195, 196, 197A, 197B, 200, 201, 202, 205, 210, 211,
22 212, 213A, 213B, 213C, 214A, 214B, 215, 216A, 216B, 216C, 217, 225, 232A,
23 232B, 1-G, 2-G, 4-G, 6-G, 7-G, 13-KB, 15-K, 21-K, 22-K, 23-K, 24-K, 26-K, 30-K,
24 31-K, 33-K, and 2-W of Jefferson Parish; Precincts 1-1, 1-2, 1-5, 1-6, 2-1, 2-2, 2-4,
25 2-6, 2-7, 3-1, 3-8, 3-9, 3-12, 3-14, 3-15, 3-18, 3-19, 4-2, 4-3, 4-5, 4-6, 5-1, 5-2, 5-3,
26 5-5, 5-7, 5-8, 5-9, 5-10, 5-11, 5-12, 5-13, 6-1, 6-2, 6-4, 6-6, 6-7, 6-8, 6-9, 7-1, 7-2,
27 7-4, 7-5, 7-6, 7-7, 7-8, 7-9A, 7-10, 7-11, 7-12, 7-13, 7-14, 7-15, 7-16, 7-17, 7-18,
28 7-19, 7-20, 7-21, 7-23, 7-24, 7-25, 7-25A, 7-26, 7-27, 7-27B, 7-28, 7-28A, 7-29,
29 7-30, 7-32, 7-33, 7-35, 7-37, 7-37A, 7-40, 8-1, 8-2, 8-4, 8-6, 8-7, 8-8, 8-9, 8-12,

1 8-13, 8-14, 8-15, 8-19, 8-20, 8-21, 8-22, 8-23, 8-24, 8-25, 8-26, 8-27, 8-28, 8-30, 9-1,
2 9-3, 9-4, 9-5, 9-6, 9-7, 9-8, 9-9, 9-10, 9-11, 9-12, 9-13, 9-14, 9-15, 9-16, 9-17, 9-19,
3 9-21, 9-23, 9-25, 9-26, 9-28, 9-28C, 9-29, 9-30, 9-30A, 9-31, 9-31A, 9-31B, 9-31D,
4 9-32, 9-33, 9-34A, 9-35, 9-35A, 9-36, 9-36B, 9-37, 9-38, 9-38A, 9-39, 9-39B, 9-40,
5 9-40A, 9-40C, 9-41, 9-41A, 9-41B, 9-41C, 9-41D, 9-42, 9-42C, 9-43A, 9-43B,
6 9-43C, 9-43E, 9-43F, 9-43G, 9-43H, 9-43I, 9-43J, 9-43K, 9-43L, 9-43M, 9-43N,
7 9-44, 9-44A, 9-44B, 9-44D, 9-44E, 9-44F, 9-44G, 9-44I, 9-44J, 9-44L, 9-44M,
8 9-44N, 9-44O, 9-44P, 9-44Q, 9-45, 9-45A, 10-3, 10-6, 10-7, 10-8, 10-9, 10-11,
9 10-12, 10-13, 10-14, 11-2, 11-3, 11-4, 11-5, 11-8, 11-9, 11-10, 11-11, 11-12, 11-13,
10 11-14, 11-17, 12-1, 12-2, 12-3, 12-4, 12-5, 12-6, 12-7, 12-8, 12-9, 12-10, 12-11,
11 12-12, 12-13, 12-14, 12-16, 12-17, 12-19, 13-1, 13-2, 13-3, 13-5, 13-11, 13-12,
12 13-13, 13-14, 13-15, 13-16, 14-23, 14-24A, 14-25, 14-26, 15-1, 15-2, 15-3, 15-5,
13 15-6, 15-8, 15-9, 15-10, 15-11, 15-12, 15-12A, 15-13, 15-13A, 15-13B, 15-14,
14 15-14A, 15-14B, 15-14C, 15-14D, 15-14E, 15-14F, 15-14G, 15-15, 15-15A, 15-15B,
15 15-16, 15-17, 15-17A, 15-17B, 15-18, 15-18A, 15-18B, 15-18C, 15-18D, 15-18E,
16 15-18F, 15-19, 15-19A, 15-19B, 15-19C, 16-3, 16-4, 16-5, 16-6, 16-7, 16-8, 16-9,
17 17-2, 17-3, 17-4, 17-5, 17-6, 17-7, 17-8, 17-9, 17-10, 17-11, 17-12, 17-13, 17-13A,
18 17-14, 17-15, and 17-16 of Orleans Parish; St. Charles Parish; St. James Parish; and
19 Precincts 1-2, 1-3, 1-4, 1-5, 2-1, 2-2, 2-3, 2-4, 3-1, 3-2, 3-4, 4-1, 4-2, 4-3, 4-13, 4-14,
20 5-1, 5-4, 5-7, 5-8, 6-1, 6-3, 6-4, 7-2, 7-3, 7-5, and Precinct 7-7 of St. John the Baptist
21 Parish.

22 (3) District 3 is composed of Precincts 2-3, 2-4, 3-1, 3-2, 5-2, 5-3, 7-2, 7-3,
23 8-1, and 9-1 of Assumption Parish; Iberia Parish; Precincts 4, 5, 24, 25, 26, and 27
24 of Iberville Parish; Precincts 192, 193A, 193B, 194B, 198, 199, 203, 226, 227, 228,
25 229, 230, 231, 234, 235, 236, 237, 238A, 238B, 246, 247, 248, 3-G, 5-G, 8-G, 9-G,
26 10-G, 11-G, 12-G, 13-G, 1-GI, and 1-L of Jefferson Parish; Lafourche Parish;
27 Plaquemines Parish; Precincts 12, 13, 14, 15, 16, 17, 18, 19, and 20 of Pointe Coupee
28 Parish; Precinct 1-1 of St. John the Baptist Parish; Precincts 7, 7A, 13, 14, 15, 16, 17,
29 29, 30, 31, 39, and 40 of St. Landry Parish; Precincts 1, 2, 3, 4, 5, 6, 7, 8, 9, 10, 11,

1 12, 13, 14, 15, 16, 19, 20, 21, 22, 24, 25, 27, 28, and 29 of St. Martin Parish; St.
2 Mary Parish; Terrebonne Parish; and Vermilion Parish.

3 (4) District 4 is composed of Bienville Parish; Precincts 1-1, 1-2, 1-3, 1-3A,
4 1-3B, 1-4, 1-5, 2-3, 2-3A, 2-5A, 2-6, 2-7, 2-8, 2-9, 2-10, 2-11, 2-11A, 2-12A, 2-12B,
5 2-12C, 2-13, 2-14, 2-15, 2-16, 2-17A, 2-17B, 2-19, 2-20, 2-23, 3-1, 3-4, 4-3A, 4-3B,
6 4-3D, 4-4A, 4-4B, 4-5A, 4-6A, 4-6B, 4-8A, 4-8B, 4-8C, 4-8D, 4-8G, 4-10, and
7 4-11C of Bossier Parish; Precincts 1, 2, 3, 4, 5A, 5B, 6, 7, 8, 15, 17, 23, 24, 25, 26,
8 27, 28, 29, 30, 31, 32, 34, 35, 36, 37, 38, 39, 40, 41, 43, 44, 45, 46, 47, 50, 51, 52, 53,
9 54, 55, 56, 57, 58, 59, 60, 61, 62, 63, 64, 65, 66, 67, 69, 70, 71, 72, 73, 74, 76, 77, 78,
10 79, 80, 81, 82, 83, 84, 85, 86, 87, 88, 89, 90, 91, 92, 93, 94, 95, 98, 99, 100, 101, 102,
11 103, 106, 107, 111, 113, 114, 122, 123, 125, 126, 129, 135, 137, 140, 144, 145, 154,
12 155, 160, 163, 165, and 166 of Caddo Parish; Precincts 5, 7, 8, 10, 11, 41, 42, 51, 81,
13 84, 85, 87, 88, 92, 93, and 96 of Claiborne Parish; Precincts 1-1, 1-2, 1-3, 1-4, 2-1,
14 3-1, 3-2, 3-3, 3-4, 4-1, 4-2, 4-3, 4-4, 5-1, 5-2, and 5-2B of Concordia Parish; East
15 Carroll Parish; Precincts 1-1, 1-2, 1-3, 2-1, 2-2, 3-1, 3-3, 3-4, 5-1, 6-1, 8-1, 8-3, 8-4,
16 9-1, 9-2, 9-3, 9-4, 9-5, 10-1, 10-2, 10-3, 10-4, 10-5, 11-1, 11-2, 11-3, 11-4, 12-1,
17 12-2, 12-3, 12-4, 12-5, and 12-6 of Lincoln Parish; Madison Parish; Precincts 1, 3-1,
18 6, 7, 8, 12, 13, 14, 16, 20, 21, 24, 31, 32, 37, 39-1, 39-2, 53, and 54 of Morehouse
19 Parish; Precincts 1-1, 1-1A, 1-2, 1-3, 1-3A, 1-4, 1-4A, 1-5, 1-5A, 1-6, 1-7, 1-8, 1-11,
20 1-12, 1-13, 1-14, 2-7, 2-8, 2-9, 3-4, 3-7, 4-2, and 4-9 of Natchitoches Parish;
21 Precincts 2, 3, 4, 5, 6, 7, 8, 9, 9A, 10, 11, 12, 13, 14, 15, 16, 17, 18, 19, 20, 21, 22,
22 23, 24, 26, 27, 27A, 28, 29, 30, 31, 32, 33, 34, 35, 36, 37, 38, 39, 40, 41, 42, 43, 44,
23 44A, 45, 46, 47, 48, 49, 50, 51, 51A, 53, 59, 60, 61, 62, 63, 64, 65, 65A, 66, 67, 68,
24 69, 70, 71, 72, 73, 74, 75, 76, 77, 78, and 79 of Ouachita Parish; Red River Parish;
25 Precincts 10, 11, 13, 18, 33, 34, and 35 of Richland Parish; Tensas Parish; Precincts
26 17, 17A, 18, 22, 24, 25, 25A, 26, 27, 28, 31, 32, 33, 34, 35, 36, 38, 39, 40, 41, 42,
27 and 43 of Webster Parish; and Precincts 1 and 2 of West Carroll Parish.

28 (5) District 5 is composed of Avoyelles Parish; Precincts 2-1, 2-2, 2-4,
29 2-18B, 2-18C, 2-18D, 2-18E, 2-18F, 2-18G, 2-21A, 2-21B, 2-21C, 2-21D, 2-22A,

1 2-22B, 2-22C, 3-2, 3-3, 4-1A, 4-2, 4-3C, 4-7A, 4-7B, 4-8E, 4-9, 4-11A, and 4-11B
2 of Bossier Parish; Precincts 9, 10, 11, 12, 13, 14, 16, 20, 21, 22, 48, 49, 68, 75, 97,
3 104, 105, 108, 109, 110, 112, 115, 127, 128, 132, 133, 134, 136A, 136B, 138, 139,
4 142, 143, 146, 149, 151, 156, 157, 158, 161, and 162 of Caddo Parish; Caldwell
5 Parish; Catahoula Parish; Precincts 1, 3, 21, 31, 34, 35, 36, 37, and 91 of Claiborne
6 Parish; Precincts 5-3, 5-4, 5-5, and 5-6 of Concordia Parish; DeSoto Parish; Franklin
7 Parish; Grant Parish; Jackson Parish; LaSalle Parish; Precincts 3-2, 3-5, 3-6, 4-1, 4-2,
8 4-3, 4-4, 4-5, 4-6, 5-2, 5-3, 5-4, 6-2, 6-3, 7-1, 7-2, and 8-2 of Lincoln Parish;
9 Precincts 23, 26-1, 27, 29, 35, 40, 42, 45, 47, 48, and 50 of Morehouse Parish;
10 Precincts 1-9, 1-9A, 1-10, 1-10A, 1-10B, 2-1, 2-2, 2-3, 2-4, 2-5, 2-6, 2-7A, 3-1, 3-2,
11 3-3, 3-5, 3-6, 3-8, 3-9, 3-10, 4-1, 4-3, 4-4, 4-5, 4-6, 4-7, and 4-8 of Natchitoches
12 Parish; Precincts 1, 1A, 25, 52, 52A, 54, 55, 56, 56A, 57, and 58 of Ouachita Parish;
13 Rapides Parish; Precincts 1, 2, 3, 4, 8, 12, 12A, 17, 23, 25, 26, 27, 28, 30, 31, and 32
14 of Richland Parish; Sabine Parish; Union Parish; Vernon Parish; Precincts 1, 2, 2B,
15 3, 4, 5, 6, 8, 9, 10, 11, 12, 13, 14, 15, 16, and 29 of Webster Parish; Precincts 3, 3A,
16 4, 5, 6, 7, 8, 9, 10, 11, 12, 14, 15, 16, and 18 of West Carroll Parish; and Winn
17 Parish.

18 (6) District 6 is composed of Precincts 1, 2, 3, 4, 5, 6, 7, 8, 9, 10, 11, 12, 13,
19 14, 15, 16, 17, 18, 20, 21, 22, 23, 24, 25, 26, 27, 28, 31, 32, 33, 34, 35, 40, 41, 43, 58,
20 61, 62, 63, 64, 66, 71, 72, 73, 76, 77, and 78 of Ascension Parish; Precincts 1-80,
21 1-107, 2-6, 2-7, 2-8, 2-33, 3-1, 3-2, 3-3, 3-4, 3-6, 3-8, 3-9, 3-10, 3-13, 3-14, 3-15,
22 3-16, 3-17, 3-19, 3-22, 3-23, 3-25, 3-26, 3-29, 3-30, 3-33, 3-34, 3-35, 3-36, 3-37,
23 3-38, 3-40, 3-43, 3-45, 3-46, 3-47, 3-48, 3-49, 3-53, 3-56, 3-58, 3-60, 3-61, 3-62,
24 3-64, 3-65, 3-66, 3-67, 3-68, 3-70, and 3-71 of East Baton Rouge Parish; Livingston
25 Parish; Precincts 101, 201, 202, 203, 204, 205, 206, 207, 301, 302, 303, 304, 305,
26 308, 314, 501, 502, 503, 504, 505, 601, 602, A01, A02, A03, A04, C09, C11, and
27 F01 of St. Tammany Parish; Precincts 27, 28, 33, 40, 40A, 41, 42, 42A, 43, 44, 45,
28 45A, 46, 47, 48, 49, 70, 70A, 71, 72, 72A, 73, 74, 102, 104, 104A, 106, 106A, 108,
29 110, 112, 114, 116, 117, 118, 119, 120, 120A, 120B, 121, 121A, 122, 122A, 122B,

1 123, 124, 124A, 125, 127, 127A, 129, 129A, 133, 133A, 137, 137A, 137B, 137C,
 2 137D, 139, 141, 141A, 143, 143A, 145, 147, 149, 149A, and 151 of Tangipahoa
 3 Parish; and Washington Parish.

4 (7) District 7 is composed of Acadia Parish; Allen Parish; Beauregard Parish;
 5 Calcasieu Parish; Cameron Parish; Precincts 1020, 1031, 1040, 1041, 1050, 1060,
 6 1091, 1130, 1140, 1150, 1161, 2010, 2010A, 2020, 2030, 2040, 3010, 3020, 3030,
 7 3031, 3032, 3040, 3050, 3051, 3052, 3060, 3070, 3071, 4001, 4010, 4011, 4012,
 8 4020, 4021, 4030, 4040, 5004, 5010, 5020, 5030, 5040, 5041, and 5050 of
 9 Evangeline Parish; Jefferson Davis Parish; Precincts 1, 2, 3, 6, 8, 9, 10, 12, 25, 26,
 10 27, 28, 29, 30, 31, 32, 33, 34, 35, 36, 37, 38, 39, 40, 41, 42, 43, 44, 45, 46, 47, 48, 49,
 11 65, 66, 67, 69, 70, 71, 72, 73, 74, 75, 76, 77, 78, 79, 80, 81, 82, 83, 84, 85, 86, 87, 88,
 12 89, 90, 91, 92, 93, 94, 95, 96, 97, 98, 99, 100, 101, 102, 103, 104, 105, 106, 107, 108,
 13 109, 110, 111, 113, 114, 115, 116, 117, 118, 119, 120, 121, 122, 123, 124, 125, 126,
 14 127, and 128 of Lafayette Parish; and Precincts 41, 42, 43, 44, 45, 46, 47, 48, 49, 50,
 15 51, and 52 of St. Landry Parish.

16 (8) District 8 is composed of Precincts 30, 36, 37, 39, 42, 44, 45, 47, 48, 50,
 17 51, 52, 53, 54, 55, 57, and 65 of Ascension Parish; Precincts 1-1, 1-2, 1-3, 1-4, 1-5,
 18 1-6, 1-7, 1-8, 1-9, 1-10, 1-11, 1-12, 1-13, 1-14, 1-15, 1-16, 1-17, 1-18, 1-19, 1-20,
 19 1-21, 1-22, 1-23, 1-24, 1-25, 1-26, 1-27, 1-28, 1-29, 1-30, 1-31, 1-32, 1-33, 1-34,
 20 1-35, 1-36, 1-37, 1-38, 1-39, 1-40, 1-41, 1-42, 1-43, 1-44, 1-45, 1-46, 1-47, 1-48,
 21 1-49, 1-50, 1-51, 1-52, 1-53, 1-54, 1-55, 1-56, 1-57, 1-58, 1-59, 1-60, 1-61, 1-62,
 22 1-63, 1-64, 1-65, 1-66, 1-67, 1-68, 1-69, 1-70, 1-71, 1-72, 1-73, 1-74, 1-75, 1-76,
 23 1-77, 1-78, 1-79, 1-81, 1-82, 1-83, 1-84, 1-85, 1-86, 1-87, 1-88, 1-89, 1-90, 1-91,
 24 1-92, 1-93, 1-94, 1-95, 1-97, 1-98, 1-99, 1-100, 1-101, 1-102, 1-103, 1-104, 1-105,
 25 2-1, 2-2, 2-3, 2-4, 2-5, 2-9, 2-10, 2-11, 2-12, 2-13, 2-14, 2-15, 2-16, 2-17, 2-18, 2-19,
 26 2-20, 2-21, 2-22, 2-23, 2-24, 2-25, 2-26, 2-27, 2-28, 2-29, 2-30, 2-31, 2-32, 2-34,
 27 2-35, 2-36, 2-37, 3-5, 3-7, 3-11, 3-12, 3-18, 3-20, 3-21, 3-24, 3-27, 3-28, 3-31, 3-32,
 28 3-39, 3-41, 3-44, 3-50, 3-51, 3-52, 3-54, 3-55, 3-57, 3-59, 3-63, 3-69, and 3-72 of
 29 East Baton Rouge Parish; East Feliciana Parish; Precincts 1010, 1030, 1080, 1081,

1 1090, 1100, 1101, 1110, 1120, 1160, 1162, 1170, and 1171 of Evangeline Parish;
2 Precincts 1, 3, 6, 7, 9, 10, 11, 12, 13, 13C, 14, 14A, 15, 15B, 16, 17, 18, 19, 20, 21,
3 22, 23, 28, 29, 31, and 32 of Iberville Parish; Precincts 4, 5, 7, 11, 13, 14, 15, 16, 17,
4 18, 19, 20, 21, 22, 23, 24, 51, 52, 53, 54, 55, 56, 57, 58, 59, 60, 61, 62, 63, 64, 68,
5 and 112 of Lafayette Parish; Precincts 1, 2, 3, 4, 5, 6, 7, 8, 9, 10, and 11 of Pointe
6 Coupee Parish; St. Helena Parish; Precincts 1, 2, 3, 4, 5, 6, 8, 9, 10, 11, 12, 18, 19,
7 20, 21, 22, 23, 24, 25, 26, 27, 28, 32, 33, 34, 35, 36, 37, and 38 of St. Landry Parish;
8 Precincts 17, 18, 23, and 26 of St. Martin Parish; Precincts 1, 2, 6, 11, 15, 16, 17, 18,
9 26, 101, 105, 107, 109, 111A, and 115B of Tangipahoa Parish; West Baton Rouge
10 Parish; and West Feliciana Parish.

11 Section 2. R.S. 17:2.1 is hereby repealed in its entirety.

12 Section 3. Act No. 3 of the 2022 First Extraordinary Session of the Legislature is
13 hereby repealed in its entirety.

14 Section 4.(A) The precincts referenced in this Act are those precincts identified as
15 Voting Districts (VTDs) in the 2020 Census Redistricting TIGER/Line Shapefiles for the
16 State of Louisiana as validated through the data verification program of the Louisiana House
17 of Representatives and the Louisiana Senate and available on the legislature's website on the
18 effective date of this Section.

19 (B) When a precinct referenced in this Act has been subdivided by action of the
20 parish governing authority on a nongeographic basis or subdivided by action of the parish
21 governing authority on a geographic basis in accordance with the provisions of R.S.
22 18:532.1, the enumeration in this Act of the general precinct designation shall include all
23 nongeographic and all geographic subdivisions thereof, however such subdivisions may be
24 designated.

25 (C) The territorial limits of the districts as provided in this Act shall continue in
26 effect until changed by law regardless of any subsequent change made to the precincts by
27 the parish governing authority.

28 Section 5.(A) Solely for the purposes of qualifying for election and the election of
29 members of the State Board of Elementary and Secondary Education at the regularly

1 scheduled elections in 2023, the provisions of Section 1 of this Act shall become effective
 2 upon signature of this Act by the governor or, if not signed by the governor, upon expiration
 3 of the time for bills to become law without signature by the governor, as provided in Article
 4 III, Section 18 of the Constitution of Louisiana. If this Act is vetoed by the governor and
 5 subsequently approved by the legislature, the provisions of Section 1 of this Act shall
 6 become effective on the day following such approval for the purposes established in this
 7 Subsection.

8 (B) The provisions of Section 1 of this Act shall be effective for all other purposes
 9 at noon on January 8, 2024.

10 (C) Section 2 of this Act shall become effective at noon on January 8, 2024.

11 (D) The provisions of this Section and Section 3 and 4 of this Act shall become
 12 effective upon signature of this Act by the governor or, if not signed by the governor, upon
 13 expiration of the time for bills to become law without signature by the governor, as provided
 14 in Article III, Section 18 of the Constitution of Louisiana. If this Act is vetoed by the
 15 governor and subsequently approved by the legislature, the provisions of this Section and
 16 Section 3 and 4 of this Act shall become effective on the day following such approval.

DIGEST

The digest printed below was prepared by House Legislative Services. It constitutes no part of the legislative instrument. The keyword, one-liner, abstract, and digest do not constitute part of the law or proof or indicia of legislative intent. [R.S. 1:13(B) and 24:177(E)]

HB 815 Original

2022 Regular Session

Jefferson

Abstract: Provides for the redistricting of the State Bd. of Elementary and Secondary Education (BESE) and provides for the composition of each of the eight BESE districts from which members are elected. Effective for election purposes only for the regular BESE elections in 2023 and for all other purposes at noon on Jan. 8, 2024.

Statistical summaries of proposed law, including district variances from the ideal population of 582,219 and the range of those variances, as well as maps illustrating proposed district boundaries accompany this digest. (*Attached to the bill version on the internet.*)

Present constitution (Const. Art. VIII, §3(B)) provides that BESE is composed of 11 members, eight of whom are elected from single-member districts and three of whom are appointed by the governor from the state at large.

Proposed law redraws district boundaries for the eight BESE districts, effective upon signature of governor or lapse of time for gubernatorial action for purposes of the 2023 election.

Proposed law repeals Act No. 3 of the 2022 1st E.S. which redrew district boundaries for the eight BESE districts.

Proposed law retains present districts until noon, Jan. 8, 2024, at which time present law is repealed and proposed districts are effective for all other purposes.

Proposed law specifies that precincts referenced in district descriptions are those precincts identified as Voting Districts (VTDs) in the 2020 Census Redistricting TIGER/Line Shapefiles for the state of La. as validated through the data verification program of the La. legislature. Also specifies that if any such precinct has been subdivided by action of the parish governing authority on a nongeographic basis or subdivided by action of the parish governing authority on a geographic basis in accordance with present law, the enumeration of the general precinct designation shall include all nongeographic and all geographic subdivisions thereof. Further provides that the territorial limits of the districts as enacted shall continue in effect until changed by law regardless of any subsequent change made to the precincts by the parish governing authority.

Population data in the summaries accompanying this digest are derived from 2020 Census Redistricting Data (Public Law 94-171), Summary File for Louisiana. Population data, statistical information, and maps are supplied for purposes of information and analysis and comprise no part of proposed law.

Effective for election purposes only for the regular BESE elections in 2023; effective for all other purposes at noon, Jan. 8, 2024.

(Adds R.S. 17:2.2; Repeals R.S. 17:2.1 and Act No. 3 of 2022 1st E.S.)

Plan Statistics

Plan: 22RS-1099 (Jefferson)

<u>Districts:</u>	<u># of Members</u>	<u>Actual Population</u>	<u>Ideal Population</u>	<u>Absolute Deviation</u>	<u>Relative Deviation</u>
District 1	1	580,519	582,219	-1,700	-0.292%
District 2	1	566,856	582,219	-15,363	-2.639%
District 3	1	560,097	582,219	-22,122	-3.800%
District 4	1	564,236	582,219	-17,983	-3.089%
District 5	1	608,719	582,219	26,500	4.552%
District 6	1	571,461	582,219	-10,758	-1.848%
District 7	1	609,375	582,219	27,156	4.664%
District 8	1	596,494	582,219	14,275	2.452%

Grand Total:	8	4,657,757	4,657,752
--------------	---	-----------	-----------

Ideal Population Per Member:	582219		
Number of Districts for Plan Type:	8		
Range of District Populations:	560,097	to	609,375
Absolute Mean Deviation:	6,160		
Absolute Range:	-22,122	to	27,156
Absolute Overall Range:	49,278		
Relative Mean Deviation:	2.92%		
Relative Range:	-3.80%	to	4.66%
Relative Overall Range:	8.46%		

<i>Ideal - Actual:</i>	-5
<i>Remainder:</i>	5
<i>Unassigned Population:</i>	0

Total Population

Plan: 22RS-1099 (Jefferson)

	Total Population	Total White	Total Black	Total Asian	Total American Indian	Total Other	Total Hispanic	VAP Total	VAP White	VAP Black	VAP Asian	VAP American Indian	VAP Other	VAP Hispanic Total
District 1	580,519	394,942	89,177	22,449	10,841	63,110	79,698	454,857	321,008	63,361	16,744	8,155	45,589	57,167
	100.000%	68.033%	15.362%	3.867%	1.867%	10.871%	13.729%	100.000%	70.573%	13.930%	3.681%	1.793%	10.023%	12.568%
District 2	566,856	166,687	338,540	17,493	5,956	38,180	49,901	440,191	141,266	253,024	14,016	4,625	27,260	34,771
	100.000%	29.406%	59.722%	3.086%	1.051%	6.735%	8.803%	100.000%	32.092%	57.481%	3.184%	1.051%	6.193%	7.899%
District 3	560,097	362,613	131,183	13,205	19,315	33,781	40,702	424,925	287,204	91,881	9,705	13,272	22,863	26,866
	100.000%	64.741%	23.421%	2.358%	3.449%	6.031%	7.267%	100.000%	67.589%	21.623%	2.284%	3.123%	5.380%	6.323%
District 4	564,236	238,912	288,851	8,572	8,441	19,460	23,528	429,884	195,347	207,859	6,501	6,568	13,609	16,050
	100.000%	42.343%	51.193%	1.519%	1.496%	3.449%	4.170%	100.000%	45.442%	48.352%	1.512%	1.528%	3.166%	3.734%
District 5	608,719	426,722	134,657	9,276	16,553	21,511	26,203	467,418	335,151	97,062	6,824	12,354	16,027	18,779
	100.000%	70.102%	22.121%	1.524%	2.719%	3.534%	4.305%	100.000%	71.703%	20.766%	1.460%	2.643%	3.429%	4.018%
District 6	571,461	416,033	102,679	10,779	10,746	31,224	35,778	430,999	323,761	70,757	7,434	7,976	21,071	23,377
	100.000%	72.802%	17.968%	1.886%	1.880%	5.464%	6.261%	100.000%	75.119%	16.417%	1.725%	1.851%	4.889%	5.424%
District 7	609,375	431,544	128,482	12,230	9,979	27,140	33,162	460,173	335,386	89,679	8,772	7,315	19,021	22,890
	100.000%	70.817%	21.084%	2.007%	1.638%	4.454%	5.442%	100.000%	72.883%	19.488%	1.906%	1.590%	4.133%	4.974%
District 8	596,494	220,199	329,550	13,284	5,229	28,232	33,577	462,101	185,388	242,146	10,420	3,975	20,172	23,762
	100.000%	36.916%	55.248%	2.227%	0.877%	4.733%	5.629%	100.000%	40.119%	52.401%	2.255%	0.860%	4.365%	5.142%
Grand Total	4,657,757	2,657,652	1,543,119	107,288	87,060	262,638	322,549	3,570,548	2,124,511	1,115,769	80,416	64,240	185,612	223,662
	100.000%	57.059%	33.130%	2.303%	1.869%	5.639%	6.925%	100.000%	59.501%	31.249%	2.252%	1.799%	5.198%	6.264%

Voter Registration

Plan: 22RS-1099 (Jefferson)

	Reg Total Dec 2021	Reg White Dec 2021	Reg Black Dec 2021	Reg Other Dec 2021	Reg Dem Total Dec 2021	Reg Rep Total Dec 2021	Reg Other Total Dec 2021
District 1	370,750	291,442	42,432	36,876	106,574	150,654	113,522
	81.509%	78.609%	11.445%	9.946%	28.746%	40.635%	30.620%
District 2	369,259	118,714	220,397	30,148	233,614	43,881	91,764
	83.886%	32.149%	59.686%	8.164%	63.266%	11.884%	24.851%
District 3	342,542	249,079	73,291	20,172	123,178	125,399	93,965
	80.612%	72.715%	21.396%	5.889%	35.960%	36.608%	27.432%
District 4	338,252	156,932	168,380	12,940	162,574	92,850	82,828
	78.684%	46.395%	49.779%	3.826%	48.063%	27.450%	24.487%
District 5	383,271	291,567	76,824	14,880	118,757	169,304	95,210
	81.997%	76.073%	20.044%	3.882%	30.985%	44.173%	24.841%
District 6	357,924	288,149	53,064	16,711	96,471	161,431	100,022
	83.045%	80.506%	14.825%	4.669%	26.953%	45.102%	27.945%
District 7	367,753	285,908	65,856	15,989	116,773	150,143	100,837
	79.916%	77.745%	17.908%	4.348%	31.753%	40.827%	27.420%
District 8	364,595	146,198	202,504	15,893	203,063	75,118	86,414
	78.899%	40.099%	55.542%	4.359%	55.695%	20.603%	23.701%
Grand Total	2,894,346	1,827,989	902,748	163,609	1,161,004	968,780	764,562

Splits

Plan: 22RS-1099 (Jefferson)

	Total Population	Total White	Total Black	Total Asian	Total American Indian	Total Other	VAP Total	VAP White	VAP Black	VAP Asian	VAP American Indian	VAP Other	Reg Total Dec 2021	Reg White Dec 2021	Reg Black Dec 2021	Reg Other Dec 2021
District 1																
*Jefferson	260,747	165,581	37,395	13,449	4,612	39,710	209,367	139,259	27,398	10,231	3,533	28,946	159,887	123,228	15,973	20,686
*Orleans	57,113	45,328	4,810	2,308	647	4,020	47,153	37,718	4,065	1,781	516	3,073	39,113	32,920	2,145	4,048
St. Bernard	43,764	24,497	12,309	1,381	947	4,630	31,775	18,992	7,944	982	688	3,169	25,653	18,233	5,497	1,923
*St. Tammany	218,895	159,536	34,663	5,311	4,635	14,750	166,562	125,039	23,954	3,750	3,418	10,401	146,097	117,061	18,817	10,219
District 1	580,519	394,942	89,177	22,449	10,841	63,110	454,857	321,008	63,361	16,744	8,155	45,589	370,750	291,442	42,432	36,876
	100.000%	68.033%	15.362%	3.867%	1.867%	10.871%	100.000%	70.573%	13.930%	3.681%	1.793%	10.023%	81.509%	78.609%	11.445%	9.946%
District 2																
*Assumption	9,701	4,158	5,201	38	76	228	7,552	3,318	3,977	19	60	178	7,034	2,932	4,003	99
*Jefferson	115,278	24,183	70,313	5,607	1,397	13,778	86,233	19,912	51,436	4,375	1,059	9,451	66,350	15,052	43,482	7,816
*Orleans	326,884	81,134	214,159	10,548	3,019	18,024	259,043	72,534	162,003	8,739	2,432	13,335	217,131	59,066	139,380	18,685
St. Charles	52,549	33,550	13,928	837	925	3,309	39,541	26,154	9,890	529	667	2,301	34,985	24,309	8,797	1,879
St. James	20,192	9,973	9,762	60	82	315	15,505	7,883	7,297	31	64	230	14,966	7,254	7,501	211
*St. John the Baptist	42,252	13,689	25,177	403	457	2,526	32,317	11,465	18,421	323	343	1,765	28,793	10,101	17,234	1,458
District 2	566,856	166,687	338,540	17,493	5,956	38,180	440,191	141,266	253,024	14,016	4,625	27,260	369,259	118,714	220,397	30,148
	100.000%	29.406%	59.722%	3.086%	1.051%	6.735%	100.000%	32.092%	57.481%	3.184%	1.051%	6.193%	83.886%	32.149%	59.686%	8.164%
District 3																
*Assumption	11,338	9,564	1,019	58	182	515	9,064	7,827	730	38	137	332	7,405	6,768	507	130
Iberia	69,929	39,206	24,556	2,123	794	3,250	52,791	31,295	17,069	1,562	581	2,284	44,526	28,287	14,352	1,887
*Iberville	5,181	4,554	411	11	83	122	4,215	3,748	289	10	72	96	3,820	3,410	335	75
*Jefferson	64,756	31,171	18,509	3,968	1,677	9,431	49,054	24,964	13,341	3,086	1,243	6,420	36,864	21,336	10,121	5,407
Lafourche	97,557	71,710	15,855	1,025	4,224	4,743	74,619	56,838	11,077	738	2,777	3,189	58,278	48,467	7,164	2,647
Plaquemines	23,515	14,287	5,428	1,317	697	1,786	17,334	10,856	3,857	925	500	1,196	13,908	9,513	3,134	1,261
*Pointe Coupee	11,352	8,770	2,100	39	106	337	8,962	7,082	1,524	32	86	238	7,958	6,512	1,296	150
*St. John the Baptist	225	188	19	0	8	10	186	157	16	0	7	6	120	118	0	2
*St. Landry	16,838	12,917	3,403	87	160	271	12,761	10,013	2,416	59	104	169	11,619	9,224	2,121	274
*St. Martin	43,061	28,886	11,935	552	454	1,234	32,901	22,836	8,459	386	354	866	29,345	20,832	7,810	703
St. Mary	49,406	26,949	15,991	835	1,670	3,961	37,521	21,594	11,520	593	1,173	2,641	30,210	18,712	9,891	1,607
Terrebonne	109,580	69,934	23,147	1,743	8,637	6,119	82,505	55,631	15,796	1,239	5,750	4,089	61,720	45,395	11,566	4,759
Vermilion	57,359	44,477	8,810	1,447	623	2,002	43,012	34,363	5,787	1,037	488	1,337	36,769	30,505	4,994	1,270
District 3	560,097	362,613	131,183	13,205	19,315	33,781	424,925	287,204	91,881	9,705	13,272	22,863	342,542	249,079	73,291	20,172
	100.000%	64.741%	23.421%	2.358%	3.449%	6.031%	100.000%	67.589%	21.623%	2.284%	3.123%	5.380%	80.612%	72.715%	21.396%	5.889%
District 4																
Bienville	12,981	6,950	5,600	57	207	167	10,073	5,486	4,284	30	162	111	8,847	4,843	3,917	87
*Bossier	77,327	41,467	25,294	2,146	1,961	6,459	57,805	33,136	17,316	1,563	1,484	4,306	37,812	24,475	10,842	2,495

Splits

Plan: 22RS-1099 (Jefferson)

	Total Population	Total White	Total Black	Total Asian	Total American Indian	Total Other	VAP Total	VAP White	VAP Black	VAP Asian	VAP American Indian	VAP Other	Reg Total Dec 2021	Reg White Dec 2021	Reg Black Dec 2021	Reg Other Dec 2021
District 4																
*Caddo	176,063	54,402	111,811	2,464	2,279	5,107	134,084	45,955	80,913	1,886	1,781	3,549	108,955	37,264	66,897	4,794
*Claiborne	8,140	3,947	3,946	51	99	97	6,395	3,295	2,920	33	76	71	5,665	2,997	2,568	100
*Concordia	15,921	7,789	7,519	118	173	322	12,041	6,146	5,443	96	131	225	9,979	5,400	4,396	183
East Carroll	7,459	2,054	5,272	29	43	61	5,901	1,773	4,043	19	27	39	4,709	1,306	3,359	44
*Lincoln	32,265	12,892	17,600	630	370	773	26,141	11,005	13,761	541	300	534	14,927	6,209	8,082	636
Madison	10,017	3,475	6,363	20	59	100	7,435	2,906	4,391	9	48	81	7,278	2,494	4,674	110
*Morehouse	17,006	5,519	11,003	102	175	207	13,139	4,609	8,147	78	141	164	10,682	3,502	7,016	164
*Natchitoches	24,846	9,468	13,909	184	389	896	19,364	8,111	10,071	153	316	713	14,613	5,890	8,083	640
*Ouachita	137,422	68,573	59,751	2,559	1,992	4,547	102,984	54,929	41,235	1,957	1,548	3,315	84,954	46,980	34,828	3,146
Red River	7,620	4,195	3,106	25	171	123	5,714	3,338	2,164	3	116	93	5,631	3,130	2,418	83
*Richland	9,095	3,088	5,742	35	81	149	6,960	2,534	4,206	26	73	121	5,847	2,014	3,727	106
Tensas	4,147	1,744	2,312	23	26	42	3,235	1,446	1,728	12	23	26	3,455	1,503	1,917	35
*Webster	22,673	12,455	9,312	127	391	388	17,602	9,938	6,996	95	325	248	13,900	8,202	5,389	309
*West Carroll	1,254	894	311	2	25	22	1,011	740	241	0	17	13	998	723	267	8
District 4	564,236	238,912	288,851	8,572	8,441	19,460	429,884	195,347	207,859	6,501	6,568	13,609	338,252	156,932	168,380	12,940
	100.000%	42.343%	51.193%	1.519%	1.496%	3.449%	100.000%	45.442%	48.352%	1.512%	1.528%	3.166%	78.684%	46.395%	49.779%	3.826%
District 5																
Avoyelles	39,693	25,625	11,678	434	767	1,189	30,578	20,269	8,311	379	570	1,049	23,426	16,534	6,294	598
*Bossier	51,419	39,585	7,257	1,346	1,312	1,919	38,071	29,795	5,124	885	993	1,274	31,931	26,386	3,996	1,549
*Caddo	61,785	49,055	7,493	1,570	1,561	2,106	48,323	39,104	5,446	1,122	1,177	1,474	42,341	35,849	4,352	2,140
Caldwell	9,645	7,646	1,632	51	150	166	7,478	5,969	1,224	46	116	123	6,031	5,124	818	89
Catahoula	8,906	5,776	2,395	46	119	570	6,951	4,557	1,736	33	87	538	6,467	4,639	1,770	58
*Claiborne	6,030	3,316	2,414	37	86	177	5,112	2,963	1,904	22	64	159	2,933	1,635	1,252	46
*Concordia	2,766	2,486	206	4	60	10	2,176	1,962	170	4	36	4	1,985	1,822	144	19
De Soto	26,812	15,284	9,973	117	740	698	20,440	11,909	7,425	86	557	463	18,713	11,330	6,810	573
Franklin	19,774	12,492	6,802	70	205	205	15,028	9,901	4,779	44	153	151	13,159	9,015	4,034	110
Grant	22,169	17,709	3,335	133	644	348	17,527	13,964	2,717	97	507	242	12,688	11,174	1,176	338
Jackson	15,031	9,967	4,166	175	255	468	11,783	7,967	3,125	140	174	377	9,449	6,647	2,610	192
La Salle	14,791	11,348	1,422	283	372	1,366	11,563	8,636	1,065	264	271	1,327	8,792	7,978	637	177
*Lincoln	16,131	13,142	1,764	262	292	671	12,514	10,301	1,358	203	226	426	10,722	9,463	934	325
*Morehouse	8,623	6,762	1,481	58	195	127	6,923	5,486	1,153	39	138	107	6,240	5,003	1,115	122
*Natchitoches	12,669	9,893	1,816	71	472	417	9,985	7,899	1,344	45	367	330	8,494	6,960	1,141	393
*Ouachita	22,946	19,972	1,466	229	669	610	17,216	15,045	1,055	161	511	444	14,798	13,535	830	433
Rapides	130,023	77,510	42,592	2,428	3,102	4,391	98,792	61,373	30,205	1,786	2,334	3,094	80,176	52,832	23,775	3,569
*Richland	10,948	8,697	1,861	48	177	165	8,423	6,804	1,340	40	130	109	7,815	6,456	1,234	125

Splits

Plan: 22RS-1099 (Jefferson)

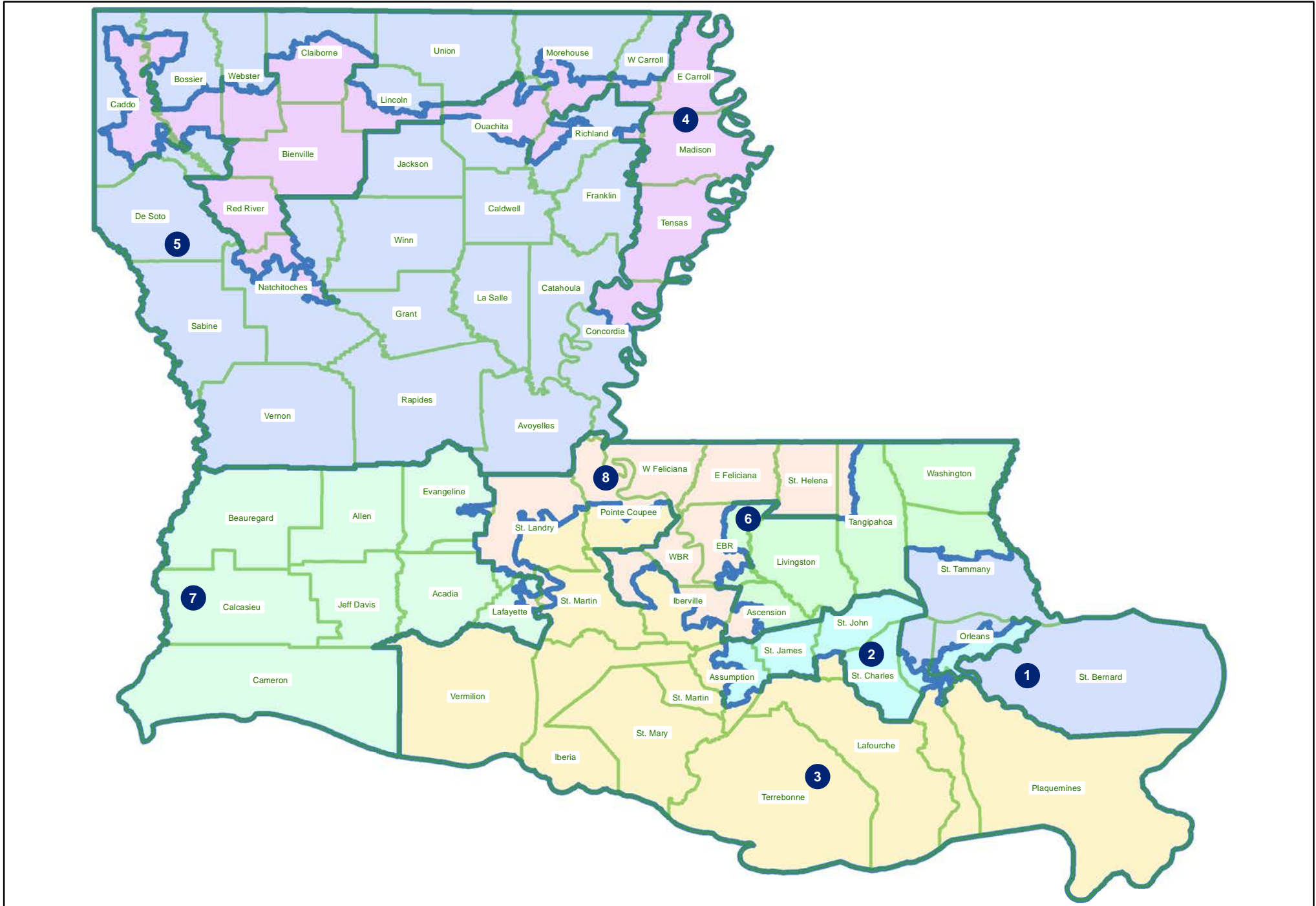
	Total Population	Total White	Total Black	Total Asian	Total American Indian	Total Other	VAP Total	VAP White	VAP Black	VAP Asian	VAP American Indian	VAP Other	Reg Total Dec 2021	Reg White Dec 2021	Reg Black Dec 2021	Reg Other Dec 2021
District 5																
Sabine	22,155	15,036	3,861	94	2,723	441	17,064	12,054	2,655	66	1,970	319	14,547	11,023	2,184	1,340
Union	21,107	14,460	5,224	62	338	1,023	16,632	11,807	3,861	39	254	671	15,221	11,066	3,692	463
Vernon	48,750	35,087	7,611	1,442	1,600	3,010	36,261	26,765	5,133	1,074	1,160	2,129	24,060	19,182	3,011	1,867
*Webster	14,294	10,280	3,367	81	296	270	11,151	8,206	2,468	59	233	185	8,837	6,736	1,950	151
*West Carroll	8,497	7,000	1,114	25	155	203	6,521	5,483	769	20	119	130	6,040	5,190	773	77
Winn	13,755	8,594	3,727	210	263	961	10,906	6,932	2,695	170	207	902	8,406	5,988	2,292	126
District 5	608,719	426,722	134,657	9,276	16,553	21,511	467,418	335,151	97,062	6,824	12,354	16,027	383,271	291,567	76,824	14,880
	100.000%	70.102%	22.121%	1.524%	2.719%	3.534%	100.000%	71.703%	20.766%	1.460%	2.643%	3.429%	81.997%	76.073%	20.044%	3.882%
District 6																
*Ascension	105,608	75,516	18,374	2,160	1,834	7,724	76,531	56,464	12,373	1,410	1,277	5,007	66,737	52,932	10,020	3,785
*East Baton Rouge	114,604	80,326	21,993	4,858	1,708	5,719	88,759	64,516	15,419	3,423	1,333	4,068	79,420	62,121	12,405	4,894
Livingston	142,282	116,855	12,658	1,697	3,111	7,961	105,141	88,432	8,136	1,099	2,311	5,163	84,568	76,062	5,425	3,081
*St. Tammany	45,675	37,105	3,980	463	1,025	3,102	35,666	29,582	2,807	325	743	2,209	32,682	28,663	2,325	1,694
*Tangipahoa	117,829	76,288	32,240	1,385	2,332	5,584	89,951	61,024	22,290	1,023	1,751	3,863	66,930	49,536	14,787	2,607
Washington	45,463	29,943	13,434	216	736	1,134	34,951	23,743	9,732	154	561	761	27,587	18,835	8,102	650
District 6	571,461	416,033	102,679	10,779	10,746	31,224	430,999	323,761	70,757	7,434	7,976	21,071	357,924	288,149	53,064	16,711
	100.000%	72.802%	17.968%	1.886%	1.880%	5.464%	100.000%	75.119%	16.417%	1.725%	1.851%	4.889%	83.045%	80.506%	14.825%	4.669%
District 7																
Acadia	57,576	44,480	10,864	238	573	1,421	42,943	34,071	7,383	173	400	916	37,678	30,555	6,407	716
Allen	22,750	16,327	4,490	246	947	740	17,510	12,751	3,275	182	646	656	12,201	9,478	2,217	506
Beauregard	36,549	29,529	4,649	402	1,052	917	27,489	22,304	3,495	269	773	648	22,294	18,771	2,369	1,154
Calcasieu	216,785	139,772	59,386	4,702	3,536	9,389	163,166	108,789	41,898	3,359	2,604	6,516	120,511	85,659	29,513	5,339
Cameron	5,617	5,232	125	30	75	155	4,358	4,100	79	23	47	109	4,789	4,610	88	91
*Evangeline	24,810	18,897	4,333	180	248	1,152	18,798	14,423	3,046	140	193	996	15,626	12,863	2,492	271
Jefferson Davis	32,250	25,066	5,837	183	472	692	24,039	19,121	4,006	111	325	476	20,013	16,350	3,202	461
*Lafayette	196,541	141,302	34,035	6,111	2,890	12,203	149,536	111,348	23,194	4,421	2,180	8,393	124,714	100,720	16,820	7,174
*St. Landry	16,497	10,939	4,763	138	186	471	12,334	8,479	3,303	94	147	311	9,927	6,902	2,748	277
District 7	609,375	431,544	128,482	12,230	9,979	27,140	460,173	335,386	89,679	8,772	7,315	19,021	367,753	285,908	65,856	15,989
	100.000%	70.817%	21.084%	2.007%	1.638%	4.454%	100.000%	72.883%	19.488%	1.906%	1.590%	4.133%	79.916%	77.745%	17.908%	4.348%
District 8																
*Ascension	20,892	5,625	13,842	140	170	1,115	15,426	4,672	9,766	104	113	771	13,180	3,868	8,794	518
*East Baton Rouge	342,177	115,743	191,405	11,567	3,019	20,443	266,853	99,365	141,371	9,176	2,414	14,527	199,844	76,111	112,270	11,463
East Feliciana	19,539	11,516	7,341	91	262	329	16,183	9,740	5,918	61	198	266	13,600	7,959	5,186	455
*Evangeline	7,540	2,457	4,902	61	32	88	5,610	2,037	3,437	47	24	65	4,927	1,703	3,151	73
*Iberville	25,060	10,279	13,319	191	191	1,080	19,871	8,714	9,943	139	149	926	16,642	6,722	9,562	358

Splits

Plan: 22RS-1099 (Jefferson)

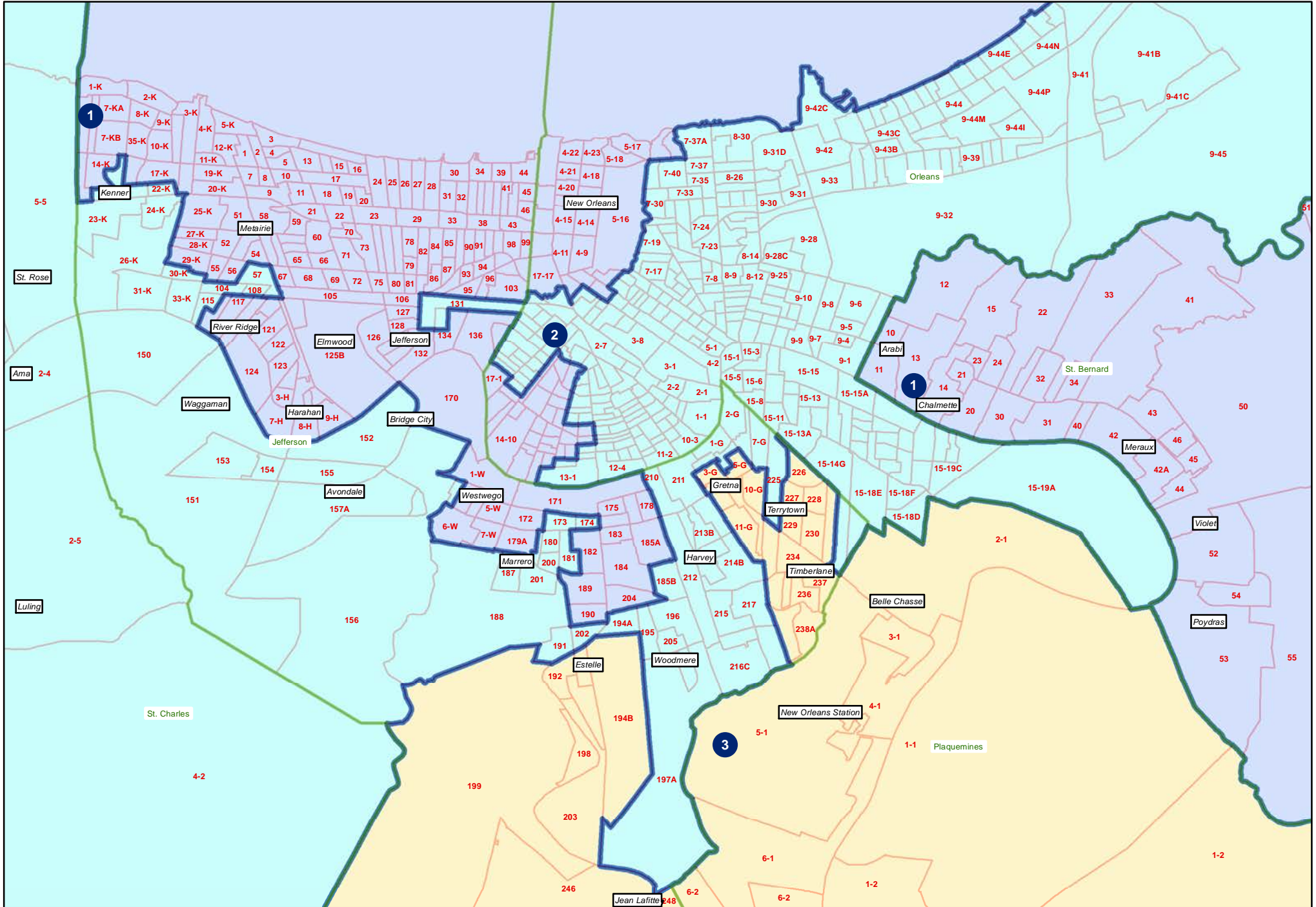
	Total Population	Total White	Total Black	Total Asian	Total American Indian	Total Other	VAP Total	VAP White	VAP Black	VAP Asian	VAP American Indian	VAP Other	Reg Total Dec 2021	Reg White Dec 2021	Reg Black Dec 2021	Reg Other Dec 2021
District 8																
*Lafayette	45,212	12,061	31,101	343	320	1,387	34,339	10,260	22,723	243	207	906	28,779	7,925	19,661	1,193
*Pointe Coupee	9,406	3,625	5,404	68	53	256	7,288	3,026	3,978	59	33	192	6,717	2,808	3,825	84
St. Helena	10,920	4,527	6,031	39	134	189	8,463	3,805	4,371	28	109	150	8,321	3,628	4,565	128
*St. Landry	49,205	19,755	27,670	274	290	1,216	36,716	15,717	19,778	200	200	821	32,936	13,967	18,136	833
*St. Martin	8,706	4,373	3,986	45	85	217	6,503	3,442	2,834	21	59	147	5,775	3,102	2,571	102
*Tangipahoa	15,328	5,048	9,639	89	122	430	11,540	4,181	6,927	77	76	279	9,326	3,376	5,738	212
West Baton Rouge	27,199	14,307	11,170	287	326	1,109	20,526	11,146	8,149	209	219	803	17,141	9,937	6,865	339
West Feliciana	15,310	10,883	3,740	89	225	373	12,783	9,283	2,951	56	174	319	7,407	5,092	2,180	135
District 8	596,494	220,199	329,550	13,284	5,229	28,232	462,101	185,388	242,146	10,420	3,975	20,172	364,595	146,198	202,504	15,893
	100.000%	36.916%	55.248%	2.227%	0.877%	4.733%	100.000%	40.119%	52.401%	2.255%	0.860%	4.365%	78.899%	40.099%	55.542%	4.359%

22RS-1099 (Jefferson)
Statewide

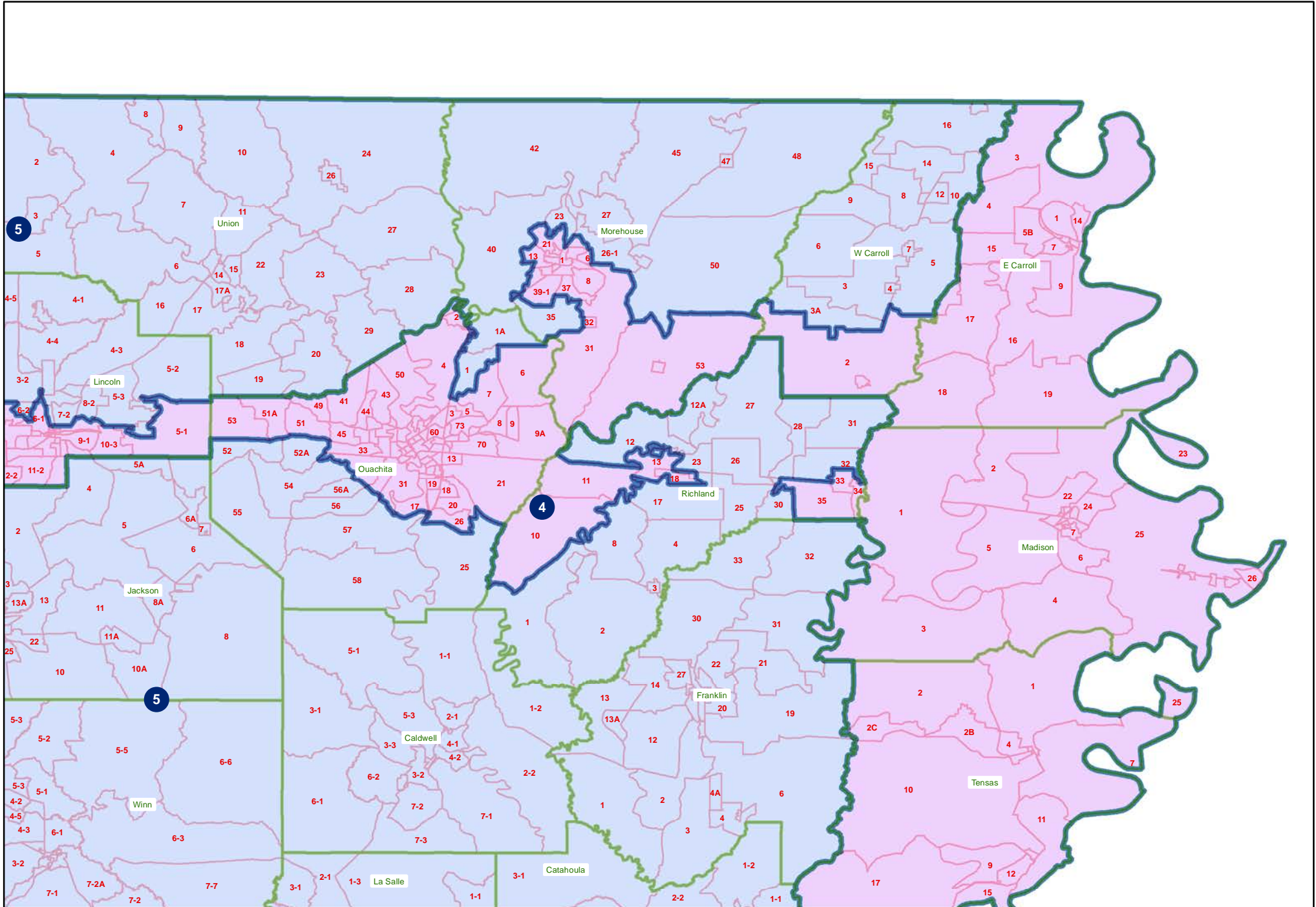


22RS-1099 (Jefferson)

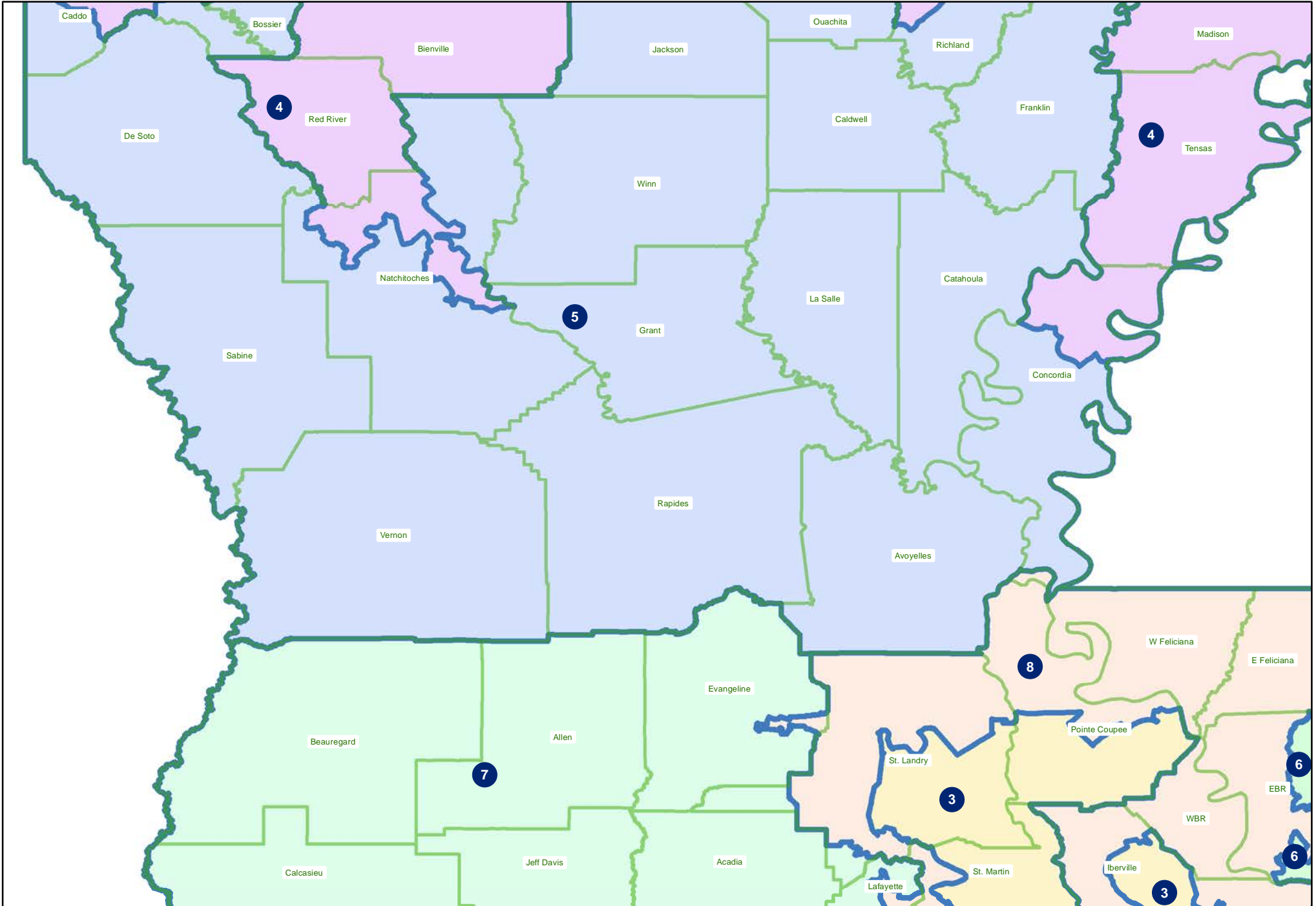
Orleans and Jefferson



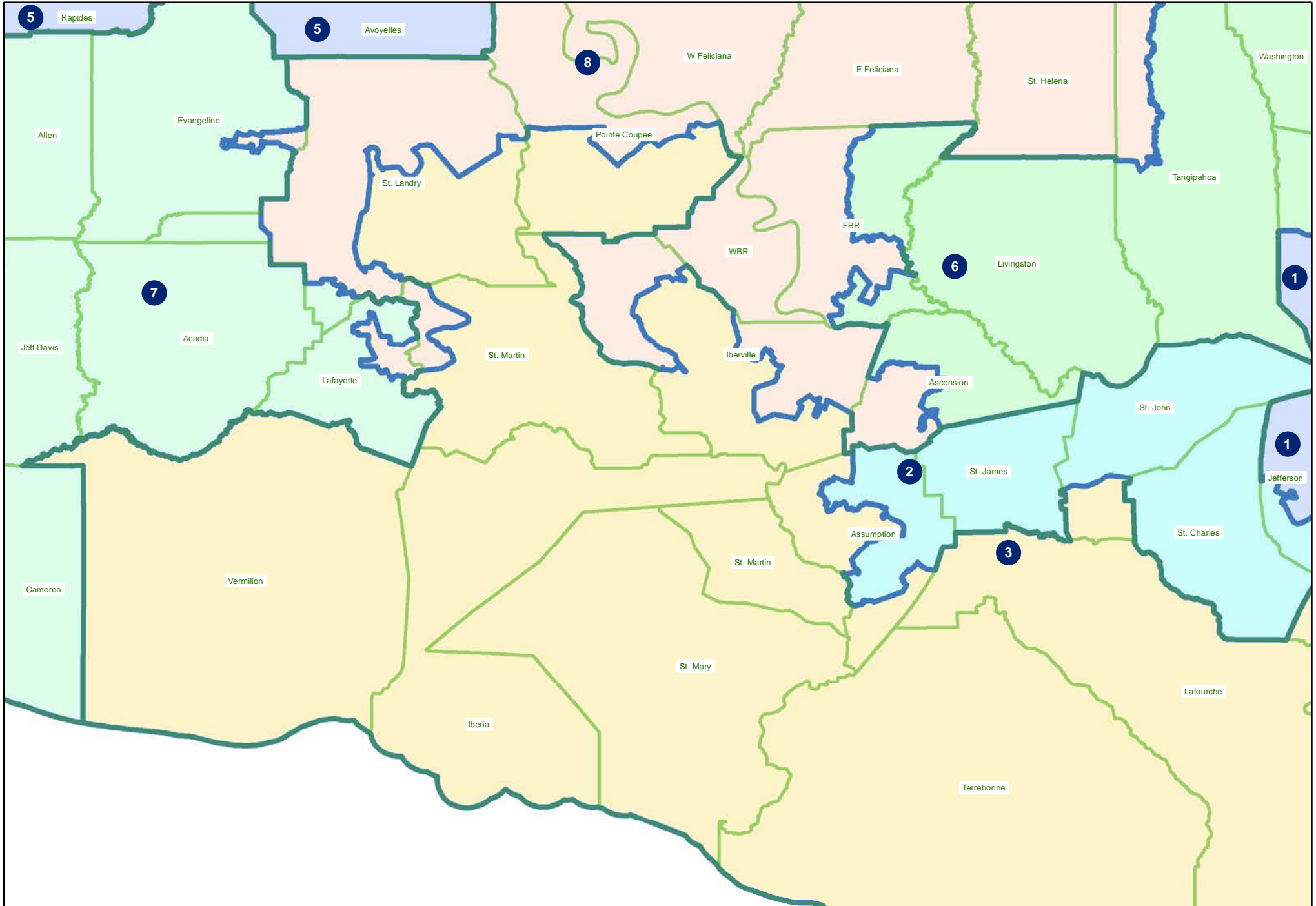
22RS-1099 (Jefferson)
Northeast



22RS-1099 (Jefferson)
Central

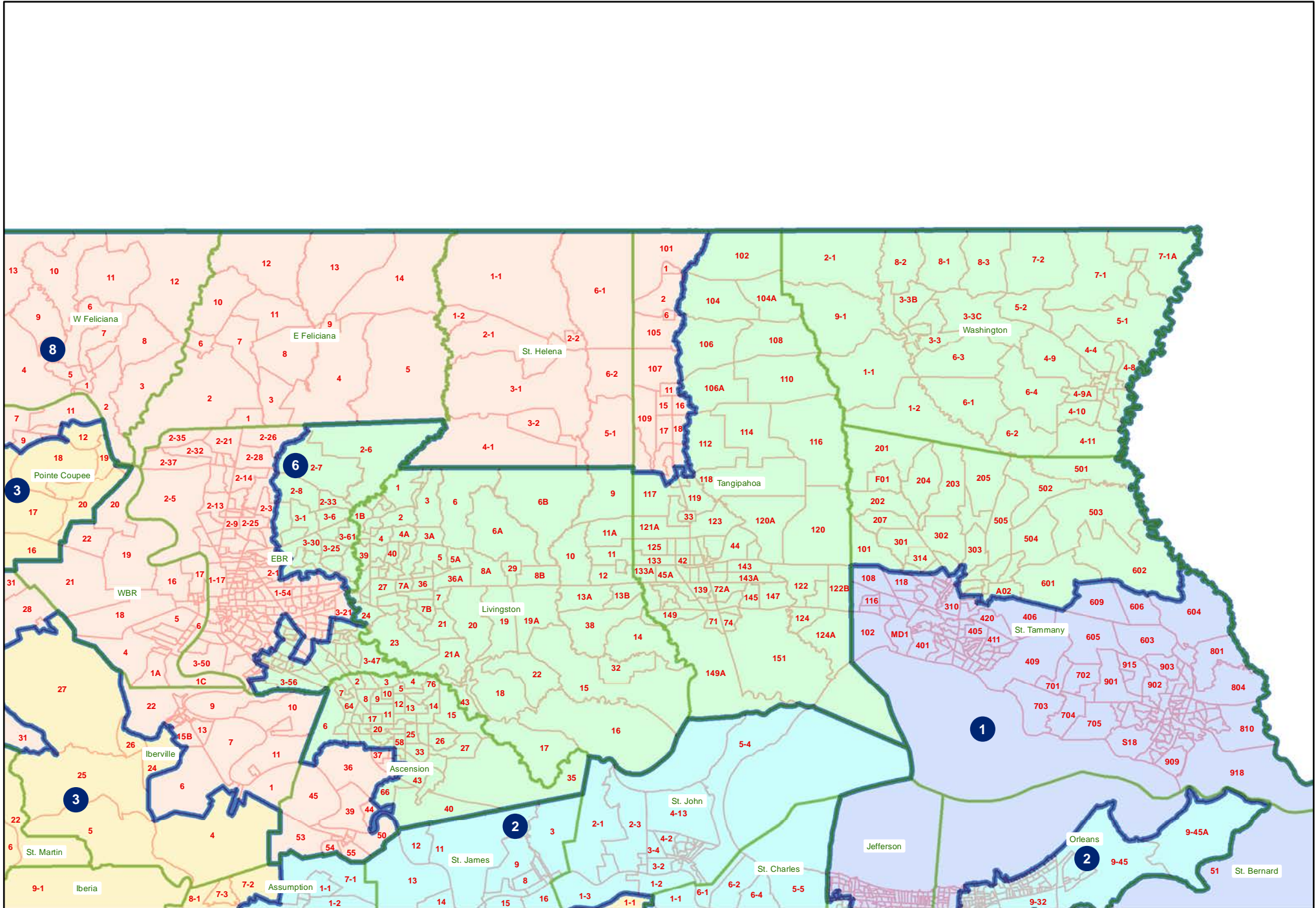


22RS-1099 (Jefferson)
Acadiana and Bayou

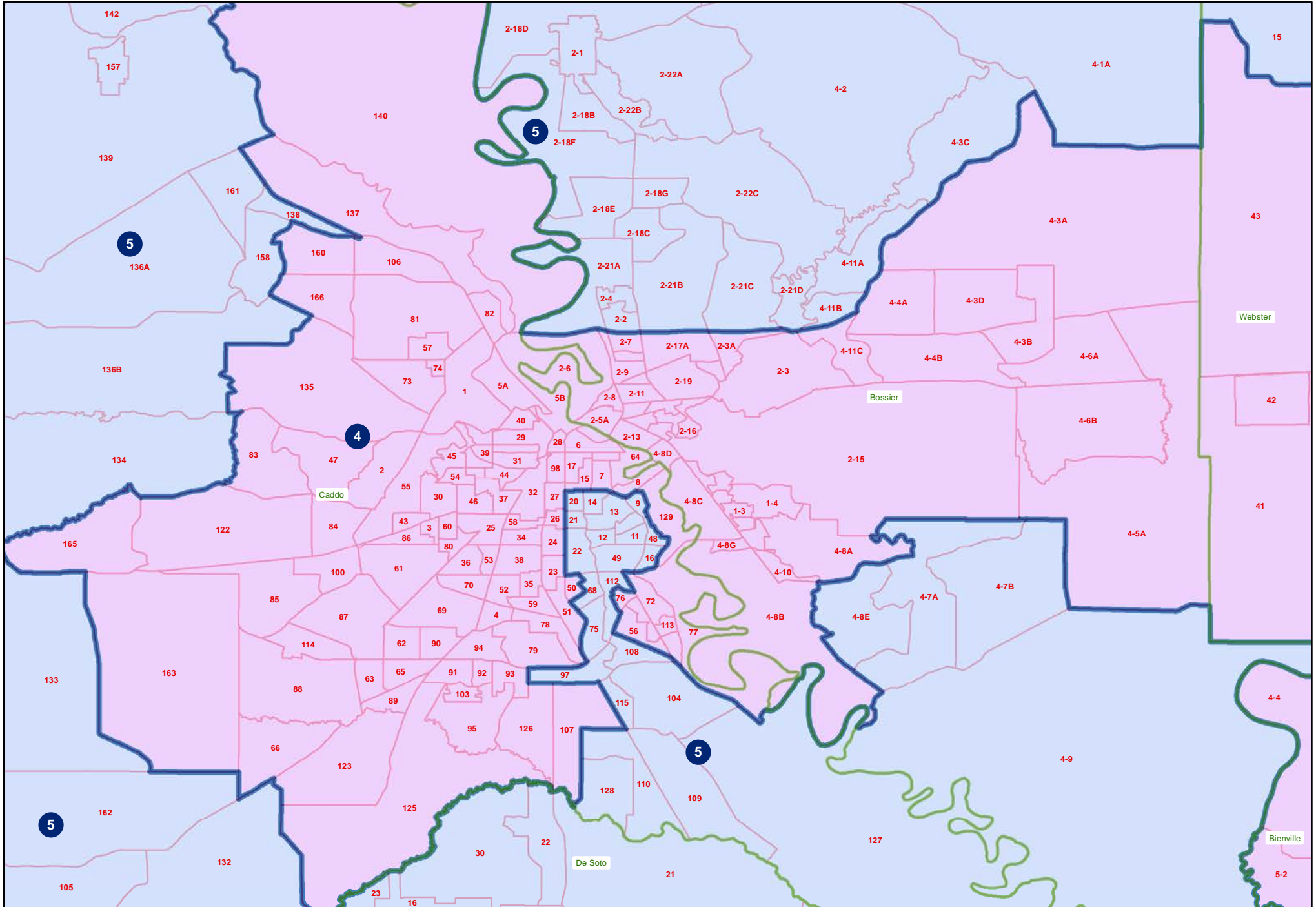


22RS-1099 (Jefferson)

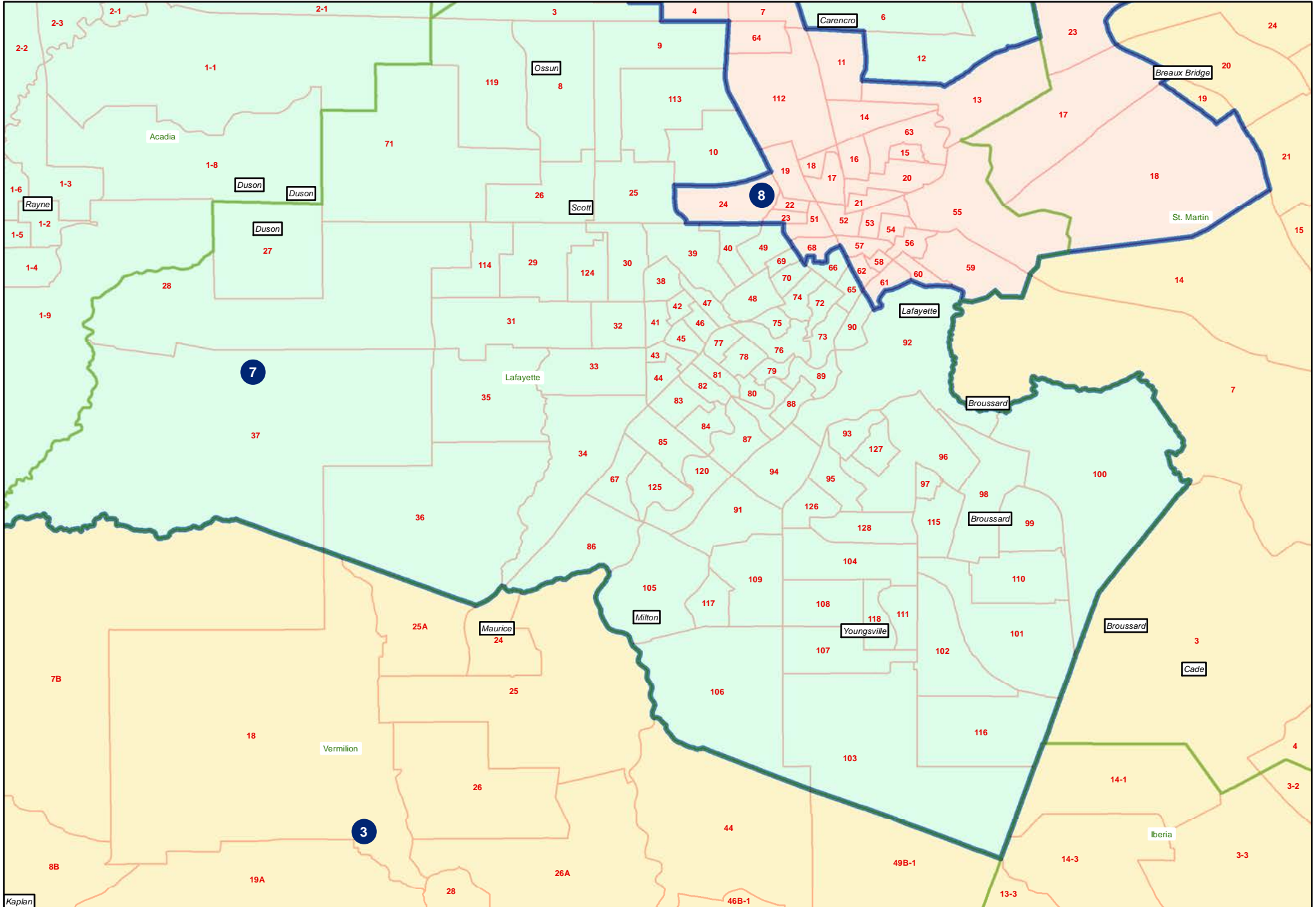
Florida Parishes



22RS-1099 (Jefferson)
Shreveport

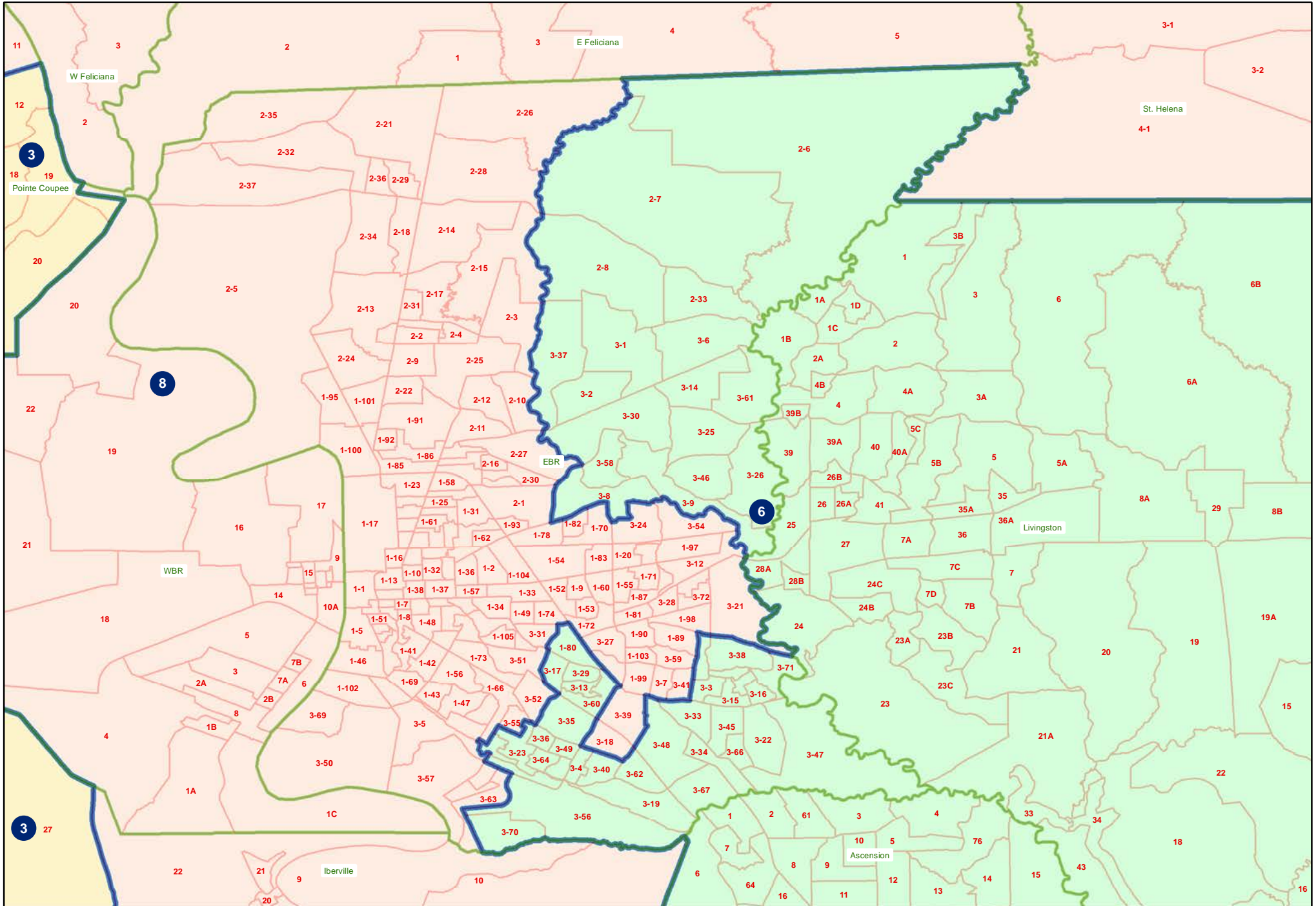


22RS-1099 (Jefferson)
Lafayette

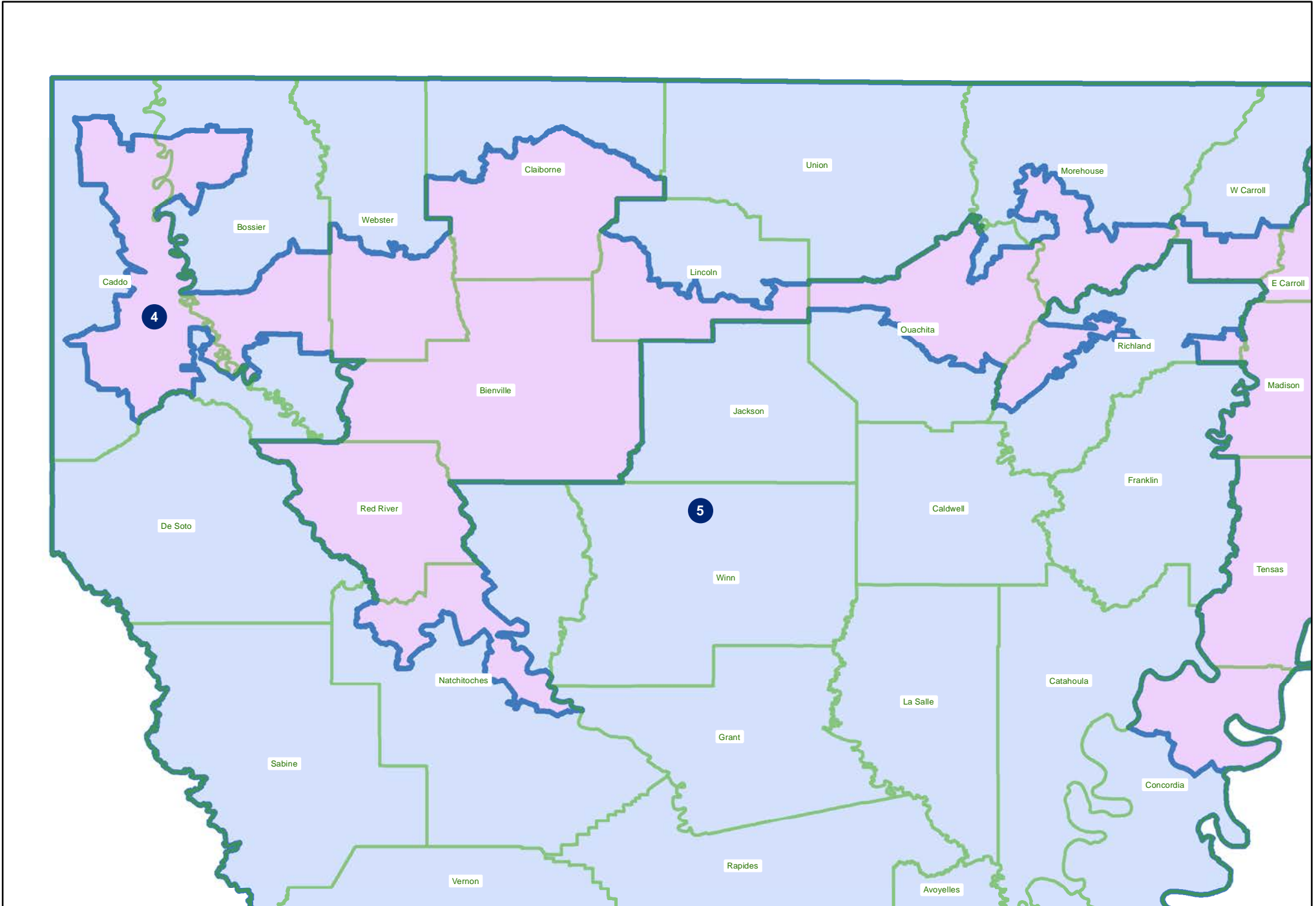


22RS-1099 (Jefferson)

Baton Rouge



22RS-1099 (Jefferson)
Northwest



22RS-1099 (Jefferson)
Monroe

