

2022 Regular Session

HOUSE BILL NO. 851

BY REPRESENTATIVE WILFORD CARTER

REAPPORTIONMENT/JUDGES: Provides for the redistricting of the supreme court

1 AN ACT

2 To enact R.S. 13:101.2 and 101.3 and to repeal R.S. 13:101, 101.1, and 312.4, relative to the
3 supreme court; to provide relative to redistricting supreme court justice districts; to provide
4 for the filling of vacancies; to eliminate statutory provisions for a temporary additional
5 judgeship for the Court of Appeal for the Fourth Circuit and such judge's appointment to the
6 supreme court; and to provide for related matters.

7 Be it enacted by the Legislature of Louisiana:

8 Section 1. R.S. 13:101.2 and 101.3 are hereby enacted to read as follows:

9 §101.2. Supreme court districts; justices

10 The state shall be divided into seven supreme court districts. The supreme
11 court shall be composed of one justice elected from each of the seven districts as set
12 forth below:

- 13 (1) District 1 is composed of Precincts 1, 2, 3, 4, 5, 7, 8, 9, 10, 11, 12, 13, 14,
- 14 15, 16, 17, 18, 19, 20, 21, 22, 23, 24, 25, 26, 27, 28, 29, 30, 31, 32, 33, 34, 35, 36, 37,
- 15 38, 39, 40, 41, 42, 43, 44, 45, 46, 51, 52, 53, 54, 55, 56, 57, 58, 59, 60, 61, 62, 63, 64,
- 16 65, 66, 67, 68, 69, 70, 71, 72, 73, 74, 75, 76, 77, 78, 79, 80, 81, 82, 83, 84, 85, 86, 87,
- 17 88, 89, 90, 91, 92, 93, 94, 95, 96, 97, 98, 99, 100, 101, 102, 103, 105, 106, 116, 117,
- 18 118, 119, 120, 121, 122, 123, 124, 125A, 125B, 126, 127, 128, 129, 130, 132, 134,
- 19 136, 138, 1-H, 2-H, 3-H, 4-H, 5-H, 6-H, 7-H, 8-H, 9-H, 1-K, 2-K, 3-K, 4-K, 5-K,
- 20 6-KA, 6-KB, 7-KA, 7-KB, 8-K, 9-K, 10-K, 11-K, 12-K, 13-KA, 13-KB, 14-K, 15-K,

1 16-K, 17-K, 18-K, 19-K, 20-K, 25-K, 27-K, 28-K, 29-K, 30-K, 34-K, and 35-K of
 2 Jefferson Parish; Precincts 13A, 13B, 14, 15, 16, 19A, 31, 32, and 38 of Livingston
 3 Parish; Precincts 3-14, 3-19, 3-20, 4-7, 4-8, 4-9, 4-11, 4-14, 4-15, 4-17, 4-17A, 4-18,
 4 4-20, 4-21, 4-22, 4-23, 5-11, 5-12, 5-13, 5-15, 5-16, 5-17, 5-18, 6-8, 6-9, 7-12, 7-17,
 5 7-32, 7-40, 7-41, 7-42, 9-45, 9-45A, 14-1, 14-2, 14-3, 14-4, 14-5, 14-6, 14-7, 14-8,
 6 14-9, 14-10, 14-11, 14-12, 14-13A, 14-14, 14-15, 14-16, 14-17, 14-18A, 14-19,
 7 14-20, 14-21, 16-1, 16-1A, 16-2, 16-3, 16-4, 16-5, 16-6, 16-7, 16-8, 17-1, 17-17,
 8 17-18, 17-18A, 17-19, and 17-20 of Orleans Parish; Precincts 1-6, 2-1, 2-6, 3-1, 3-2,
 9 3-3, 5-3, 5-5, 6-1, 6-2, 6-4, 6-6, 6-7, and 6-8 of St. Charles Parish; Precincts 4-13,
 10 5-4, 5-7, and 5-8 of St. John the Baptist Parish; St. Tammany Parish; Precincts 28,
 11 33, 44, 70, 70A, 71, 72, 72A, 73, 74, 102, 104, 104A, 106, 106A, 108, 110, 112, 114,
 12 116, 118, 119, 120, 120A, 120B, 121, 122, 122A, 122B, 123, 124, 124A, 137, 137A,
 13 137B, 137C, 137D, 139, 141, 141A, 143, 143A, 145, 147, 149, 149A, and 151 of
 14 Tangipahoa Parish; and Washington Parish.

15 (2) District 2 is composed of Bienville Parish; Bossier Parish; Caddo Parish;
 16 Claiborne Parish; DeSoto Parish; East Carroll Parish; Franklin Parish; Lincoln
 17 Parish; Madison Parish; Morehouse Parish; Precincts 1, 1A, 2, 3, 4, 5, 6, 7, 8, 9, 50,
 18 66, 67, 68, 72, 73, 75, and 76 of Ouachita Parish; Richland Parish; Tensas Parish;
 19 Union Parish; Webster Parish; and West Carroll Parish.

20 (3) District 3 is composed of Calcasieu Parish; Cameron Parish; Iberia
 21 Parish; Precincts 4, 5, 25, 26, and 27 of Iberville Parish; Precincts 2, 3, 6, 8, 9, 10,
 22 12, 13, 25, 26, 27, 28, 29, 30, 31, 32, 33, 34, 35, 36, 37, 38, 39, 40, 41, 42, 43, 44, 45,
 23 46, 47, 48, 49, 65, 66, 67, 69, 70, 71, 72, 73, 74, 75, 76, 77, 78, 79, 80, 81, 82, 83, 84,
 24 85, 86, 87, 88, 89, 90, 91, 92, 93, 94, 95, 96, 97, 98, 99, 100, 101, 102, 103, 104, 105,
 25 106, 107, 108, 109, 110, 111, 113, 114, 115, 116, 117, 118, 119, 120, 121, 122, 124,
 26 125, 126, 127, and 128 of Lafayette Parish; Precincts 7, 7A, 13, 14, 15, 16, 17, 29,
 27 30, 31, 38, 39, and 40 of St. Landry Parish; St. Martin Parish; St. Mary Parish;
 28 Precincts 13, 14, 15, 16, 18, 19, 20, 21, 23, 25, 29, 31, 32, 34, 35, 36, 38, 41, 43, 45,
 29 46, 48, 49, 51, 52, 53, 54, 55, 56, 57, 58, 59, 60, 61, 63, 64, 65, 67, 68, 69, 71, 72, 73,

1 74, 82, 83, 84, 85, 86, 87, 88, 89, 90, 110, and 111 of Terrebonne Parish; and
2 Vermilion Parish.

3 (4) District 4 is composed of Precincts 2-2, 2-2B, 2-4, 2-7, 2-8, 3-1, 3-1B,
4 3-3, 4-2A, 7-1, 8-2A, 9-1A, 9-2, 9-2A, 9-3, 9-5B, 10-2, 10-4, and 11-1 of Avoyelles
5 Parish; Precincts 1-1, 1-2, 1-3, 1-4, 1-5, 1-6, 1-10, 1-11, 1-12, 1-13, 1-14, 1-15, 1-16,
6 1-17, 1-18, 1-19, 1-20, 1-21, 1-22, 1-23, 1-24, 1-25, 1-26, 1-27, 1-28, 1-29, 1-30,
7 1-31, 1-32, 1-36, 1-37, 1-38, 1-43, 1-45, 1-46, 1-47, 1-50, 1-51, 1-54, 1-56, 1-58,
8 1-59, 1-61, 1-62, 1-63, 1-66, 1-67, 1-68, 1-70, 1-73, 1-75, 1-76, 1-77, 1-78, 1-82,
9 1-83, 1-84, 1-85, 1-86, 1-88, 1-91, 1-92, 1-93, 1-94, 1-95, 1-97, 1-100, 1-101, 1-102,
10 1-104, 2-1, 2-2, 2-3, 2-4, 2-5, 2-9, 2-10, 2-11, 2-12, 2-13, 2-14, 2-15, 2-16, 2-17,
11 2-18, 2-19, 2-20, 2-21, 2-22, 2-23, 2-24, 2-25, 2-26, 2-27, 2-28, 2-29, 2-30, 2-31,
12 2-32, 2-34, 2-35, 2-36, 2-37, 3-5, 3-8, 3-20, 3-24, 3-44, 3-50, 3-54, 3-55, 3-57, and
13 3-69 of East Baton Rouge Parish; East Feliciana Parish; Precincts 1, 3, 6, 7, 9, 10,
14 11, 12, 13, 13C, 14, 14A, 15, 15B, 16, 17, 18, 19, 20, 21, 22, 23, 24, 28, 29, 31, and
15 32 of Iberville Parish; Precincts 1, 4, 5, 7, 11, 14, 15, 16, 17, 18, 19, 20, 21, 22, 23,
16 24, 51, 52, 53, 54, 55, 56, 57, 58, 59, 60, 61, 62, 63, 64, 68, 112, and 123 of
17 Lafayette Parish; Pointe Coupee Parish; Precincts C1, C2, C3, C4, C5, C6, C7, C8,
18 C9, C10, C11-A, C11-B, C13, C14, C15, C17, C18, C19, C20, C21, C24, C25, C28,
19 C39, C40, N2, N3, N4, S15, S16, S17, and S18 of Rapides Parish; St. Helena Parish;
20 Precincts 1, 2, 3, 4, 5, 6, 8, 9, 10, 11, 12, 18, 19, 20, 21, 22, 23, 24, 25, 26, 27, 28, 32,
21 33, 34, 35, 36, 37, 41, 42, 43, 44, 48, 49, 50, and 51 of St. Landry Parish; Precincts
22 1, 2, 6, 11, 15, 16, 17, 18, 26, 27, 40, 40A, 41, 42, 42A, 43, 45, 45A, 46, 47, 48, 49,
23 101, 105, 107, 109, 111A, 115B, 117, 121A, 125, 127, 127A, 129, 129A, 133, and
24 133A of Tangipahoa Parish; West Baton Rouge Parish; and Precincts 4 and 9 of
25 West Feliciana Parish.

26 (5) District 5 is composed of Acadia Parish; Allen Parish; Precincts 1-1, 1-2,
27 1-3, 2-1, 2-2A, 2-2C, 2-2D, 2-2F, 2-3A, 2-4A, 2-5, 2-5E, 4-1, 4-2, 5-1, 5-1A, 6-1A,
28 6-2, 6-2A, 7-3, 7-3B, 8-1, 8-2B, 8-3, 8-3A, 9-4, 9-4B, 10-2A, 10-3A, and 11-2A of
29 Avoyelles Parish; Beauregard Parish; Caldwell Parish; Catahoula Parish; Concordia

1 Parish; Evangeline Parish; Grant Parish; Jackson Parish; Jefferson Davis Parish;
 2 LaSalle Parish; Natchitoches Parish; Precincts 9A, 10, 11, 12, 13, 14, 15, 16, 17, 18,
 3 19, 20, 21, 22, 23, 24, 25, 26, 27, 27A, 28, 29, 30, 31, 32, 33, 34, 35, 36, 37, 38, 39,
 4 40, 41, 42, 43, 44, 44A, 45, 46, 47, 48, 49, 51, 51A, 52, 52A, 53, 54, 55, 56, 56A, 57,
 5 58, 59, 60, 61, 62, 63, 64, 65, 65A, 69, 70, 71, 74, 77, 78, and 79 of Ouachita Parish;
 6 Precincts C22, C23, C26, C27, C30, C31, C32, C33, C34, C35, C36, C37-A, C37-B,
 7 C38-A, C38-B, C41, C42, N1, N5, N6, N7, N8, N9, N10, N11, N12, N13-A, N13-B,
 8 N14-A, N14-B, N15, N16, N17, N18-A, N18-B, N19, N20, N21, N22, N23, N24,
 9 N25, N26, N27, N28, N29, S1, S2, S4, S5, S6A, S6B, S7, S8, S9, S10, S11, S13,
 10 S14, S19, S20, S21, S22, S23, S24, S25, S26, S27, S28, and S29 of Rapides Parish;
 11 Red River Parish; Sabine Parish; Precincts 45, 46, 47, and 52 of St. Landry Parish;
 12 Vernon Parish; Precincts 1, 2, 3, 5, 6, 7, 8, 10, 11, 12, and 13 of West Feliciana
 13 Parish; and Winn Parish.

14 (6) District 6 is composed of Ascension Parish; Assumption Parish; Precincts
 15 1-7, 1-8, 1-9, 1-33, 1-34, 1-35, 1-39, 1-40, 1-41, 1-42, 1-44, 1-48, 1-49, 1-52, 1-53,
 16 1-55, 1-57, 1-60, 1-64, 1-65, 1-69, 1-71, 1-72, 1-74, 1-79, 1-80, 1-81, 1-87, 1-89,
 17 1-90, 1-98, 1-99, 1-103, 1-105, 1-107, 2-6, 2-7, 2-8, 2-33, 3-1, 3-2, 3-3, 3-4, 3-6, 3-7,
 18 3-9, 3-10, 3-11, 3-12, 3-13, 3-14, 3-15, 3-16, 3-17, 3-18, 3-19, 3-21, 3-22, 3-23, 3-25,
 19 3-26, 3-27, 3-28, 3-29, 3-30, 3-31, 3-32, 3-33, 3-34, 3-35, 3-36, 3-37, 3-38, 3-39,
 20 3-40, 3-41, 3-43, 3-45, 3-46, 3-47, 3-48, 3-49, 3-51, 3-52, 3-53, 3-56, 3-58, 3-59,
 21 3-60, 3-61, 3-62, 3-63, 3-64, 3-65, 3-66, 3-67, 3-68, 3-70, 3-71, and 3-72 of East
 22 Baton Rouge Parish; Precincts 198, 199, 246, 247, 248, 1-GI, and 1-L of Jefferson
 23 Parish; Lafourche Parish; Precincts 1, 1A, 1B, 1C, 1D, 2, 2A, 3, 3A, 3B, 4, 4A, 4B,
 24 5, 5A, 5B, 5C, 6, 6A, 6B, 7, 7A, 7B, 7C, 7D, 8A, 8B, 9, 10, 11, 11A, 12, 17, 18, 18A,
 25 19, 20, 21, 21A, 22, 23, 23A, 23B, 23C, 24, 24B, 24C, 25, 26, 26A, 26B, 26C, 27,
 26 28A, 28B, 29, 30, 33, 34, 35, 35A, 36, 36A, 39, 39A, 39B, 40, 40A, 41, and 43 of
 27 Livingston Parish; Plaquemines Parish; St. Bernard Parish; Precincts 2-5, 4-1, 4-2,
 28 4-3, 7-1, 7-2, and 7-3 of St. Charles Parish; Precincts 2, 3, 4, 6, 8, 9, and 11 of

1 St. James Parish; Precincts 1-1, 2-1, 2-3, and 2-4 of St. John the Baptist Parish; and
2 Precincts 1, 4, 5, 7, 8, 9, 10, 11, 12, 17, 27, and 76 of Terrebonne Parish.

3 (7) District 7 is composed of Precincts 104, 108, 115, 131, 133, 150, 151,
4 152, 153, 154, 155, 156, 157A, 157B, 170, 171, 172, 173, 174, 175, 176, 177, 178,
5 179A, 179B, 180, 181, 182, 183, 184, 185A, 185B, 187, 188, 189, 190, 191, 192,
6 193A, 193B, 194A, 194B, 195, 196, 197A, 197B, 200, 201, 202, 203, 204, 205, 210,
7 211, 212, 213A, 213B, 213C, 214A, 214B, 215, 216A, 216B, 216C, 217, 225, 226,
8 227, 228, 229, 230, 231, 232A, 232B, 234, 235, 236, 237, 238A, 238B, 1-G, 2-G,
9 3-G, 4-G, 5-G, 6-G, 7-G, 8-G, 9-G, 10-G, 11-G, 12-G, 13-G, 21-K, 22-K, 23-K,
10 24-K, 26-K, 31-K, 33-K, 1-W, 2-W, 3-W, 4-W, 5-W, 6-W, and 7-W of Jefferson
11 Parish; Precincts 1-1, 1-2, 1-5, 1-6, 2-1, 2-2, 2-4, 2-6, 2-7, 3-1, 3-8, 3-9, 3-12, 3-15,
12 3-18, 4-2, 4-3, 4-5, 4-6, 5-1, 5-2, 5-3, 5-5, 5-7, 5-8, 5-9, 5-10, 6-1, 6-2, 6-4, 6-6, 6-7,
13 7-1, 7-2, 7-4, 7-5, 7-6, 7-7, 7-8, 7-9A, 7-10, 7-11, 7-13, 7-14, 7-15, 7-16, 7-18, 7-19,
14 7-20, 7-21, 7-23, 7-24, 7-25, 7-25A, 7-26, 7-27, 7-27B, 7-28, 7-28A, 7-29, 7-30,
15 7-33, 7-35, 7-37, 7-37A, 8-1, 8-2, 8-4, 8-6, 8-7, 8-8, 8-9, 8-12, 8-13, 8-14, 8-15,
16 8-19, 8-20, 8-21, 8-22, 8-23, 8-24, 8-25, 8-26, 8-27, 8-28, 8-30, 9-1, 9-3, 9-4, 9-5,
17 9-6, 9-7, 9-8, 9-9, 9-10, 9-11, 9-12, 9-13, 9-14, 9-15, 9-16, 9-17, 9-19, 9-21, 9-23,
18 9-25, 9-26, 9-28, 9-28C, 9-29, 9-30, 9-30A, 9-31, 9-31A, 9-31B, 9-31D, 9-32, 9-33,
19 9-34A, 9-35, 9-35A, 9-36, 9-36B, 9-37, 9-38, 9-38A, 9-39, 9-39B, 9-40, 9-40A,
20 9-40C, 9-41, 9-41A, 9-41B, 9-41C, 9-41D, 9-42, 9-42C, 9-43A, 9-43B, 9-43C,
21 9-43E, 9-43F, 9-43G, 9-43H, 9-43I, 9-43J, 9-43K, 9-43L, 9-43M, 9-43N, 9-44,
22 9-44A, 9-44B, 9-44D, 9-44E, 9-44F, 9-44G, 9-44I, 9-44J, 9-44L, 9-44M, 9-44N,
23 9-44O, 9-44P, 9-44Q, 10-3, 10-6, 10-7, 10-8, 10-9, 10-11, 10-12, 10-13, 10-14, 11-2,
24 11-3, 11-4, 11-5, 11-8, 11-9, 11-10, 11-11, 11-12, 11-13, 11-14, 11-17, 12-1, 12-2,
25 12-3, 12-4, 12-5, 12-6, 12-7, 12-8, 12-9, 12-10, 12-11, 12-12, 12-13, 12-14, 12-16,
26 12-17, 12-19, 13-1, 13-2, 13-3, 13-4, 13-5, 13-6, 13-7, 13-8, 13-9, 13-10, 13-11,
27 13-12, 13-13, 13-14, 13-15, 13-16, 14-23, 14-24A, 14-25, 14-26, 15-1, 15-2, 15-3,
28 15-5, 15-6, 15-8, 15-9, 15-10, 15-11, 15-12, 15-12A, 15-13, 15-13A, 15-13B, 15-14,
29 15-14A, 15-14B, 15-14C, 15-14D, 15-14E, 15-14F, 15-14G, 15-15, 15-15A, 15-15B,

1 15-16, 15-17, 15-17A, 15-17B, 15-18, 15-18A, 15-18B, 15-18C, 15-18D, 15-18E,
 2 15-18F, 15-19, 15-19A, 15-19B, 15-19C, 16-9, 17-2, 17-3, 17-4, 17-5, 17-6, 17-7,
 3 17-8, 17-9, 17-10, 17-11, 17-12, 17-13, 17-13A, 17-14, 17-15, and 17-16 of Orleans
 4 Parish; Precincts 1-1, 1-2, 1-3, 1-5, 2-2, 2-3, 2-4, 4-4, 5-1, 5-4, and 7-4 of St. Charles
 5 Parish; Precincts 1, 5, 7, 10, 12, 13, 14, 15, 16, 17, 18, and 19 of St. James Parish;
 6 and Precincts 1-2, 1-3, 1-4, 1-5, 2-2, 3-1, 3-2, 3-4, 4-1, 4-2, 4-3, 4-14, 5-1, 6-1, 6-3,
 7 6-4, 7-2, 7-3, 7-5, and 7-7 of St. John the Baptist Parish.

8 §101.3. Assignment of districts; vacancies, elections; redistricting

9 A. Each justice of the supreme court in office on January 1, 2023, shall be
 10 the justice for the district having the same designation as the district from which the
 11 justice was elected and shall complete the term for which he was elected.

12 B. The successor to the office of justice of the supreme court shall be elected
 13 from the district assigned to that office as provided by Subsection A of this Section.
 14 The election shall be from the district composed as provided by R.S. 13:101.2.

15 Section 2. R.S. 13:101, 101.1, and 312.4 are hereby repealed.

16 Section 3.(A) The precincts referenced in this Act are those precincts identified as
 17 Voting Districts (VTDs) in the 2020 Census Redistricting TIGER/Line Shapefiles for the
 18 State of Louisiana as validated through the data verification program of the Louisiana House
 19 of Representatives and the Louisiana Senate and available on the legislature's website on the
 20 effective date of this Section.

21 (B) When a precinct referenced in this Act has been subdivided by action of the
 22 parish governing authority on a nongeographic basis or subdivided by action of the parish
 23 governing authority on a geographic basis in accordance with the provisions of R.S.
 24 18:532.1, the enumeration in this Act of the general precinct designation shall include all
 25 nongeographic and all geographic subdivisions thereof, however such subdivisions may be
 26 designated.

27 (C) The territorial limits of the districts as provided in this Act shall continue in
 28 effect until changed by law regardless of any subsequent change made to the precincts by
 29 the parish governing authority.

1 Section 4.(A) Solely for the purposes of qualifying for election and the election of
2 a member of the supreme court from District 6 at the regularly scheduled election for such
3 office in 2022, the provisions of Section 1 of this Act shall become effective upon signature
4 of this Act by the governor or, if not signed by the governor, upon expiration of the time for
5 bills to become law without signature by the governor, as provided in Article III, Section 18
6 of the Constitution of Louisiana. If this Act is vetoed by the governor and subsequently
7 approved by the legislature, the provisions of Section 1 of this Act shall become effective
8 on the day following such approval for the purposes established in this Subsection.

9 (B) For subsequent elections of members of the supreme court and for all other
10 purposes, the provisions of Section 1 of this Act shall become effective on January 1, 2023.

11 (C) The provisions of Section 2 of this Act shall become effective on January 1,
12 2023.

13 (D) The provisions of this Section and Section 3 of this Act shall become effective
14 upon signature of this Act by the governor or, if not signed by the governor, upon expiration
15 of the time for bills to become law without signature by the governor, as provided in Article
16 III, Section 18 of the Constitution of Louisiana. If this Act is vetoed by the governor and
17 subsequently approved by the legislature, the provisions of this Section and Section 3 of this
18 Act shall become effective on the day following such approval.

DIGEST

The digest printed below was prepared by House Legislative Services. It constitutes no part of the legislative instrument. The keyword, one-liner, abstract, and digest do not constitute part of the law or proof or indicia of legislative intent. [R.S. 1:13(B) and 24:177(E)]

HB 851 Original

2022 Regular Session

Wilford Carter

Abstract: Provides for the redistricting of the state's supreme court and provides for the composition of seven supreme court districts. Effective upon signature of governor for election purposes for the regular supreme court District 6 election in 2022 and on Jan. 1, 2023, for all purposes.

Statistical summaries of proposed law including maps illustrating proposed district boundaries accompany this digest. *(Attached to the bill version on the internet.)*

Present constitution (Const. Art. V, §3) provides the supreme court must be composed of a chief justice and six associate justices.

Present constitution (Const. Art. V, §4) provides the state must be divided into at least six supreme court districts, and at least one judge shall be elected from each. Further provides

the districts and the number of judges assigned to each on the effective date of this constitution are retained, subject to change by law enacted by two-thirds of the elected members of each house of the legislature.

Proposed law redraws district boundaries for the seven supreme court districts.

Proposed law provides the district boundaries will be effective upon signature of the governor or lapse of time for gubernatorial action for the purposes of qualifying for election and the election of a member of the supreme court from District 6 at the regularly scheduled election for such office in 2022.

Proposed law provides for subsequent elections of members of the supreme court and for all other purposes an effective date of Jan. 1, 2023, at which time present law is repealed and proposed districts are effective for all other purposes.

Proposed law repeals present law that provides for an additional judgeship for the Court of Appeals for the Fourth Circuit who is assigned to the La. Supreme Court.

Proposed law specifies that precincts referenced in district descriptions are those precincts identified as Voting Districts (VTDs) in the 2020 Census Redistricting TIGER/Line Shapefiles for the state of La. as validated through the data verification program of the La. legislature. Also specifies that if any such precinct has been subdivided by action of the parish governing authority on a nongeographic basis or subdivided by action of the parish governing authority on a geographic basis in accordance with present law, the enumeration of the general precinct designation shall include all nongeographic and all geographic subdivisions thereof. Further provides that the territorial limits of the districts as enacted shall continue in effect until changed by law regardless of any subsequent change made to the precincts by the parish governing authority.

Population data in the summaries accompanying this digest are derived from 2020 Census Redistricting Data (Public Law 94-171), Summary File for Louisiana. Population data, statistical information, and maps are supplied for purposes of information and analysis and comprise no part of proposed law.

Effective upon signature of governor or lapse of time for gubernatorial action for election purposes only for the supreme court District 6 election in 2022; effective on Jan. 1, 2023, for all other purposes.

(Adds R.S. 13:101.2 and 101.3; Repeals R.S. 13:101, 101.1, and 312.4)

Plan Statistics

Plan: 22RS-1344 (W. Carter)

| <u>Districts:</u> | <u># of Members</u> | <u>Actual Population</u> | <u>Ideal Population</u> | <u>Absolute Deviation</u> | <u>Relative Deviation</u> |
|---------------------|---------------------|--------------------------|-------------------------|---------------------------|---------------------------|
| District 1 | 1 | 732,465 | 665,393 | 67,072 | 10.080% |
| District 2 | 1 | 666,080 | 665,393 | 687 | 0.103% |
| District 3 | 1 | 751,517 | 665,393 | 86,124 | 12.943% |
| District 4 | 1 | 551,710 | 665,393 | -113,683 | -17.085% |
| District 5 | 1 | 651,378 | 665,393 | -14,015 | -2.106% |
| District 6 | 1 | 731,745 | 665,393 | 66,352 | 9.972% |
| District 7 | 1 | 572,862 | 665,393 | -92,531 | -13.906% |
| Grand Total: | 7 | 4,657,757 | 4,657,751 | | |

| | | | |
|------------------------------------|----------|----|---------|
| Ideal Population Per Member: | 665393 | | |
| Number of Districts for Plan Type: | 7 | | |
| Range of District Populations: | 551,710 | to | 751,517 |
| Absolute Mean Deviation: | 28,544 | | |
| Absolute Range: | -113,683 | to | 86,124 |
| Absolute Overall Range: | 199,807 | | |
| Relative Mean Deviation: | 9.46% | | |
| Relative Range: | -17.09% | to | 12.94% |
| Relative Overall Range: | 30.03% | | |

| | |
|--------------------------------------|-----------|
| <i>Ideal - Actual:</i> | -6 |
| <i>Remainder:</i> | 6 |
| <i>Unassigned Population:</i> | 0 |

Total Population

Plan: 22RS-1344 (W. Carter)

| | Total Population | Total White | Total Black | Total Asian | Total American Indian | Total Other | Total Hispanic | VAP Total | VAP White | VAP Black | VAP Asian | VAP American Indian | VAP Other | VAP Hispanic Total |
|-------------|------------------|-------------|-------------|-------------|-----------------------|-------------|----------------|-----------|-----------|-----------|-----------|---------------------|-----------|--------------------|
| District 1 | 732,465 | 515,145 | 112,718 | 21,639 | 13,719 | 69,244 | 86,295 | 572,936 | 416,071 | 80,717 | 16,041 | 10,242 | 49,865 | 61,508 |
| | 100.000% | 70.330% | 15.389% | 2.954% | 1.873% | 9.454% | 11.781% | 100.000% | 72.621% | 14.088% | 2.800% | 1.788% | 8.703% | 10.736% |
| District 2 | 666,080 | 352,040 | 269,817 | 10,490 | 11,699 | 22,034 | 26,456 | 511,028 | 283,112 | 196,159 | 7,732 | 8,969 | 15,056 | 17,550 |
| | 100.000% | 52.853% | 40.508% | 1.575% | 1.756% | 3.308% | 3.972% | 100.000% | 55.400% | 38.385% | 1.513% | 1.755% | 2.946% | 3.434% |
| District 3 | 751,517 | 500,127 | 178,930 | 17,358 | 17,701 | 37,401 | 44,259 | 568,874 | 393,368 | 124,829 | 12,488 | 12,535 | 25,654 | 29,564 |
| | 100.000% | 66.549% | 23.809% | 2.310% | 2.355% | 4.977% | 5.889% | 100.000% | 69.149% | 21.943% | 2.195% | 2.203% | 4.510% | 5.197% |
| District 4 | 551,710 | 186,854 | 330,528 | 7,820 | 4,977 | 21,531 | 25,772 | 423,051 | 155,241 | 242,353 | 6,286 | 3,706 | 15,465 | 18,293 |
| | 100.000% | 33.868% | 59.910% | 1.417% | 0.902% | 3.903% | 4.671% | 100.000% | 36.696% | 57.287% | 1.486% | 0.876% | 3.656% | 4.324% |
| District 5 | 651,378 | 448,505 | 156,054 | 8,103 | 16,103 | 22,613 | 28,750 | 495,780 | 350,632 | 109,982 | 6,025 | 11,960 | 17,181 | 21,307 |
| | 100.000% | 68.855% | 23.958% | 1.244% | 2.472% | 3.472% | 4.414% | 100.000% | 70.723% | 22.184% | 1.215% | 2.412% | 3.465% | 4.298% |
| District 6 | 731,745 | 497,273 | 151,594 | 20,162 | 16,183 | 46,533 | 54,538 | 553,947 | 390,783 | 105,450 | 14,427 | 11,583 | 31,704 | 36,160 |
| | 100.000% | 67.957% | 20.717% | 2.755% | 2.212% | 6.359% | 7.453% | 100.000% | 70.545% | 19.036% | 2.604% | 2.091% | 5.723% | 6.528% |
| District 7 | 572,862 | 157,708 | 343,478 | 21,716 | 6,678 | 43,282 | 56,479 | 444,932 | 135,304 | 256,279 | 17,417 | 5,245 | 30,687 | 39,280 |
| | 100.000% | 27.530% | 59.958% | 3.791% | 1.166% | 7.555% | 9.859% | 100.000% | 30.410% | 57.600% | 3.915% | 1.179% | 6.897% | 8.828% |
| Grand Total | 4,657,757 | 2,657,652 | 1,543,119 | 107,288 | 87,060 | 262,638 | 322,549 | 3,570,548 | 2,124,511 | 1,115,769 | 80,416 | 64,240 | 185,612 | 223,662 |
| | 100.000% | 57.059% | 33.130% | 2.303% | 1.869% | 5.639% | 6.925% | 100.000% | 59.501% | 31.249% | 2.252% | 1.799% | 5.198% | 6.264% |

Voter Registration

Plan: 22RS-1344 (W. Carter)

| | Reg Total Dec 2021 | Reg White Dec 2021 | Reg Black Dec 2021 | Reg Other Dec 2021 | Reg Dem Total Dec 2021 | Reg Rep Total Dec 2021 | Reg Other Total Dec 2021 |
|-------------|-----------------------|-----------------------|-----------------------|-----------------------|------------------------------|------------------------------|--------------------------------|
| District 1 | 470,584 | 373,568 | 57,313 | 39,703 | 134,225 | 197,127 | 139,232 |
| | 82.136% | 79.384% | 12.179% | 8.437% | 28.523% | 41.890% | 29.587% |
| District 2 | 412,349 | 239,431 | 157,288 | 15,630 | 167,136 | 145,175 | 100,038 |
| | 80.690% | 58.065% | 38.144% | 3.790% | 40.533% | 35.207% | 24.261% |
| District 3 | 458,579 | 339,389 | 96,777 | 22,413 | 152,241 | 179,713 | 126,625 |
| | 80.612% | 74.009% | 21.104% | 4.887% | 33.198% | 39.189% | 27.612% |
| District 4 | 338,159 | 122,176 | 203,843 | 12,140 | 197,583 | 61,742 | 78,834 |
| | 79.933% | 36.130% | 60.280% | 3.590% | 58.429% | 18.258% | 23.313% |
| District 5 | 399,167 | 296,235 | 88,529 | 14,403 | 137,693 | 160,884 | 100,590 |
| | 80.513% | 74.213% | 22.178% | 3.608% | 34.495% | 40.305% | 25.200% |
| District 6 | 450,723 | 346,597 | 78,794 | 25,332 | 141,899 | 183,388 | 125,436 |
| | 81.366% | 76.898% | 17.482% | 5.620% | 31.483% | 40.688% | 27.830% |
| District 7 | 364,785 | 110,593 | 220,204 | 33,988 | 230,227 | 40,751 | 93,807 |
| | 81.987% | 30.317% | 60.365% | 9.317% | 63.113% | 11.171% | 25.716% |
| Grand Total | 2,894,346 | 1,827,989 | 902,748 | 163,609 | 1,161,004 | 968,780 | 764,562 |

Splits

Plan: 22RS-1344 (W. Carter)

| | Total Population | Total White | Total Black | Total Asian | Total American Indian | Total Other | VAP Total | VAP White | VAP Black | VAP Asian | VAP American Indian | VAP Other | Reg Total Dec 2021 | Reg White Dec 2021 | Reg Black Dec 2021 | Reg Other Dec 2021 |
|-----------------------|------------------|----------------|----------------|---------------|-----------------------|---------------|----------------|----------------|----------------|---------------|---------------------|---------------|--------------------|--------------------|--------------------|--------------------|
| District 1 | | | | | | | | | | | | | | | | |
| *Jefferson | 234,973 | 149,203 | 31,419 | 11,449 | 4,026 | 38,876 | 188,174 | 125,126 | 23,099 | 8,650 | 3,033 | 28,266 | 142,796 | 110,935 | 12,940 | 18,921 |
| *Livingston | 11,453 | 9,605 | 1,051 | 83 | 210 | 504 | 8,809 | 7,544 | 728 | 44 | 164 | 329 | 7,670 | 6,784 | 671 | 215 |
| *Orleans | 68,631 | 52,518 | 7,499 | 2,860 | 806 | 4,948 | 57,029 | 44,101 | 6,257 | 2,240 | 653 | 3,778 | 47,462 | 38,269 | 4,119 | 5,074 |
| *St. Charles | 21,835 | 15,098 | 4,088 | 387 | 391 | 1,871 | 16,501 | 11,852 | 2,831 | 260 | 270 | 1,288 | 14,522 | 11,075 | 2,483 | 964 |
| *St. John the Baptist | 4,251 | 2,434 | 1,274 | 24 | 83 | 436 | 3,358 | 2,072 | 920 | 21 | 58 | 287 | 2,881 | 2,001 | 734 | 146 |
| St. Tammany | 264,570 | 196,641 | 38,643 | 5,774 | 5,660 | 17,852 | 202,228 | 154,621 | 26,761 | 4,075 | 4,161 | 12,610 | 178,779 | 145,724 | 21,142 | 11,913 |
| *Tangipahoa | 81,289 | 59,703 | 15,310 | 846 | 1,807 | 3,623 | 61,886 | 47,012 | 10,389 | 597 | 1,342 | 2,546 | 48,887 | 39,945 | 7,122 | 1,820 |
| Washington | 45,463 | 29,943 | 13,434 | 216 | 736 | 1,134 | 34,951 | 23,743 | 9,732 | 154 | 561 | 761 | 27,587 | 18,835 | 8,102 | 650 |
| District 1 | 732,465 | 515,145 | 112,718 | 21,639 | 13,719 | 69,244 | 572,936 | 416,071 | 80,717 | 16,041 | 10,242 | 49,865 | 470,584 | 373,568 | 57,313 | 39,703 |
| | 100.000% | 70.330% | 15.389% | 2.954% | 1.873% | 9.454% | 100.000% | 72.621% | 14.088% | 2.800% | 1.788% | 8.703% | 82.136% | 79.384% | 12.179% | 8.437% |
| District 2 | | | | | | | | | | | | | | | | |
| Bienville | 12,981 | 6,950 | 5,600 | 57 | 207 | 167 | 10,073 | 5,486 | 4,284 | 30 | 162 | 111 | 8,847 | 4,843 | 3,917 | 87 |
| Bossier | 128,746 | 81,052 | 32,551 | 3,492 | 3,273 | 8,378 | 95,876 | 62,931 | 22,440 | 2,448 | 2,477 | 5,580 | 69,743 | 50,861 | 14,838 | 4,044 |
| Caddo | 237,848 | 103,457 | 119,304 | 4,034 | 3,840 | 7,213 | 182,407 | 85,059 | 86,359 | 3,008 | 2,958 | 5,023 | 151,296 | 73,113 | 71,249 | 6,934 |
| Claiborne | 14,170 | 7,263 | 6,360 | 88 | 185 | 274 | 11,507 | 6,258 | 4,824 | 55 | 140 | 230 | 8,598 | 4,632 | 3,820 | 146 |
| De Soto | 26,812 | 15,284 | 9,973 | 117 | 740 | 698 | 20,440 | 11,909 | 7,425 | 86 | 557 | 463 | 18,713 | 11,330 | 6,810 | 573 |
| East Carroll | 7,459 | 2,054 | 5,272 | 29 | 43 | 61 | 5,901 | 1,773 | 4,043 | 19 | 27 | 39 | 4,709 | 1,306 | 3,359 | 44 |
| Franklin | 19,774 | 12,492 | 6,802 | 70 | 205 | 205 | 15,028 | 9,901 | 4,779 | 44 | 153 | 151 | 13,159 | 9,015 | 4,034 | 110 |
| Lincoln | 48,396 | 26,034 | 19,364 | 892 | 662 | 1,444 | 38,655 | 21,306 | 15,119 | 744 | 526 | 960 | 25,649 | 15,672 | 9,016 | 961 |
| Madison | 10,017 | 3,475 | 6,363 | 20 | 59 | 100 | 7,435 | 2,906 | 4,391 | 9 | 48 | 81 | 7,278 | 2,494 | 4,674 | 110 |
| Morehouse | 25,629 | 12,281 | 12,484 | 160 | 370 | 334 | 20,062 | 10,095 | 9,300 | 117 | 279 | 271 | 16,922 | 8,505 | 8,131 | 286 |
| *Ouachita | 42,233 | 23,080 | 16,501 | 1,128 | 626 | 898 | 32,109 | 18,530 | 11,586 | 881 | 468 | 644 | 25,322 | 15,770 | 8,491 | 1,061 |
| Richland | 20,043 | 11,785 | 7,603 | 83 | 258 | 314 | 15,383 | 9,338 | 5,546 | 66 | 203 | 230 | 13,662 | 8,470 | 4,961 | 231 |
| Tensas | 4,147 | 1,744 | 2,312 | 23 | 26 | 42 | 3,235 | 1,446 | 1,728 | 12 | 23 | 26 | 3,455 | 1,503 | 1,917 | 35 |
| Union | 21,107 | 14,460 | 5,224 | 62 | 338 | 1,023 | 16,632 | 11,807 | 3,861 | 39 | 254 | 671 | 15,221 | 11,066 | 3,692 | 463 |
| Webster | 36,967 | 22,735 | 12,679 | 208 | 687 | 658 | 28,753 | 18,144 | 9,464 | 154 | 558 | 433 | 22,737 | 14,938 | 7,339 | 460 |
| West Carroll | 9,751 | 7,894 | 1,425 | 27 | 180 | 225 | 7,532 | 6,223 | 1,010 | 20 | 136 | 143 | 7,038 | 5,913 | 1,040 | 85 |
| District 2 | 666,080 | 352,040 | 269,817 | 10,490 | 11,699 | 22,034 | 511,028 | 283,112 | 196,159 | 7,732 | 8,969 | 15,056 | 412,349 | 239,431 | 157,288 | 15,630 |
| | 100.000% | 52.853% | 40.508% | 1.575% | 1.756% | 3.308% | 100.000% | 55.400% | 38.385% | 1.513% | 1.755% | 2.946% | 80.690% | 58.065% | 38.144% | 3.790% |
| District 3 | | | | | | | | | | | | | | | | |
| Calcasieu | 216,785 | 139,772 | 59,386 | 4,702 | 3,536 | 9,389 | 163,166 | 108,789 | 41,898 | 3,359 | 2,604 | 6,516 | 120,511 | 85,659 | 29,513 | 5,339 |
| Cameron | 5,617 | 5,232 | 125 | 30 | 75 | 155 | 4,358 | 4,100 | 79 | 23 | 47 | 109 | 4,789 | 4,610 | 88 | 91 |
| Iberia | 69,929 | 39,206 | 24,556 | 2,123 | 794 | 3,250 | 52,791 | 31,295 | 17,069 | 1,562 | 581 | 2,284 | 44,526 | 28,287 | 14,352 | 1,887 |
| *Iberville | 4,213 | 3,921 | 118 | 9 | 67 | 98 | 3,439 | 3,226 | 72 | 8 | 59 | 74 | 3,023 | 2,905 | 52 | 66 |

Splits

Plan: 22RS-1344 (W. Carter)

| | Total Population | Total White | Total Black | Total Asian | Total American Indian | Total Other | VAP Total | VAP White | VAP Black | VAP Asian | VAP American Indian | VAP Other | Reg Total Dec 2021 | Reg White Dec 2021 | Reg Black Dec 2021 | Reg Other Dec 2021 |
|-------------------|------------------|-------------|-------------|-------------|-----------------------|-------------|-----------|-----------|-----------|-----------|---------------------|-----------|--------------------|--------------------|--------------------|--------------------|
| District 3 | | | | | | | | | | | | | | | | |
| *Lafayette | 192,812 | 138,794 | 33,007 | 6,067 | 2,849 | 12,095 | 146,952 | 109,476 | 22,619 | 4,393 | 2,151 | 8,313 | 122,527 | 99,048 | 16,410 | 7,069 |
| *St. Landry | 17,746 | 13,542 | 3,662 | 89 | 169 | 284 | 13,428 | 10,488 | 2,593 | 59 | 110 | 178 | 12,149 | 9,615 | 2,242 | 292 |
| St. Martin | 51,767 | 33,259 | 15,921 | 597 | 539 | 1,451 | 39,404 | 26,278 | 11,293 | 407 | 413 | 1,013 | 35,120 | 23,934 | 10,381 | 805 |
| St. Mary | 49,406 | 26,949 | 15,991 | 835 | 1,670 | 3,961 | 37,521 | 21,594 | 11,520 | 593 | 1,173 | 2,641 | 30,210 | 18,712 | 9,891 | 1,607 |
| *Terrebonne | 85,883 | 54,975 | 17,354 | 1,459 | 7,379 | 4,716 | 64,803 | 43,759 | 11,899 | 1,047 | 4,909 | 3,189 | 48,955 | 36,114 | 8,854 | 3,987 |
| Vermilion | 57,359 | 44,477 | 8,810 | 1,447 | 623 | 2,002 | 43,012 | 34,363 | 5,787 | 1,037 | 488 | 1,337 | 36,769 | 30,505 | 4,994 | 1,270 |
| District 3 | 751,517 | 500,127 | 178,930 | 17,358 | 17,701 | 37,401 | 568,874 | 393,368 | 124,829 | 12,488 | 12,535 | 25,654 | 458,579 | 339,389 | 96,777 | 22,413 |
| | 100.000% | 66.549% | 23.809% | 2.310% | 2.355% | 4.977% | 100.000% | 69.149% | 21.943% | 2.195% | 2.203% | 4.510% | 80.612% | 74.009% | 21.104% | 4.887% |
| District 4 | | | | | | | | | | | | | | | | |
| *Avoyelles | 17,861 | 7,313 | 9,006 | 314 | 365 | 863 | 13,944 | 6,052 | 6,551 | 289 | 260 | 792 | 9,865 | 4,431 | 5,131 | 303 |
| *East Baton Rouge | 229,381 | 54,198 | 157,546 | 5,024 | 1,673 | 10,940 | 176,405 | 46,416 | 116,850 | 4,142 | 1,309 | 7,688 | 136,162 | 33,418 | 96,619 | 6,125 |
| East Feliciana | 19,539 | 11,516 | 7,341 | 91 | 262 | 329 | 16,183 | 9,740 | 5,918 | 61 | 198 | 266 | 13,600 | 7,959 | 5,186 | 455 |
| *Iberville | 26,028 | 10,912 | 13,612 | 193 | 207 | 1,104 | 20,647 | 9,236 | 10,160 | 141 | 162 | 948 | 17,439 | 7,227 | 9,845 | 367 |
| *Lafayette | 48,941 | 14,569 | 32,129 | 387 | 361 | 1,495 | 36,923 | 12,132 | 23,298 | 271 | 236 | 986 | 30,966 | 9,597 | 20,071 | 1,298 |
| Pointe Coupee | 20,758 | 12,395 | 7,504 | 107 | 159 | 593 | 16,250 | 10,108 | 5,502 | 91 | 119 | 430 | 14,675 | 9,320 | 5,121 | 234 |
| *Rapides | 39,247 | 9,666 | 27,803 | 391 | 416 | 971 | 29,406 | 8,087 | 19,944 | 295 | 301 | 779 | 23,426 | 6,176 | 16,354 | 896 |
| St. Helena | 10,920 | 4,527 | 6,031 | 39 | 134 | 189 | 8,463 | 3,805 | 4,371 | 28 | 109 | 150 | 8,321 | 3,628 | 4,565 | 128 |
| *St. Landry | 59,168 | 25,619 | 31,223 | 359 | 423 | 1,544 | 44,118 | 20,190 | 22,344 | 256 | 304 | 1,024 | 38,523 | 17,386 | 20,150 | 987 |
| *Tangipahoa | 51,868 | 21,633 | 26,569 | 628 | 647 | 2,391 | 39,605 | 18,193 | 18,828 | 503 | 485 | 1,596 | 27,369 | 12,967 | 13,403 | 999 |
| West Baton Rouge | 27,199 | 14,307 | 11,170 | 287 | 326 | 1,109 | 20,526 | 11,146 | 8,149 | 209 | 219 | 803 | 17,141 | 9,937 | 6,865 | 339 |
| *West Feliciana | 800 | 199 | 594 | 0 | 4 | 3 | 581 | 136 | 438 | 0 | 4 | 3 | 672 | 130 | 533 | 9 |
| District 4 | 551,710 | 186,854 | 330,528 | 7,820 | 4,977 | 21,531 | 423,051 | 155,241 | 242,353 | 6,286 | 3,706 | 15,465 | 338,159 | 122,176 | 203,843 | 12,140 |
| | 100.000% | 33.868% | 59.910% | 1.417% | 0.902% | 3.903% | 100.000% | 36.696% | 57.287% | 1.486% | 0.876% | 3.656% | 79.933% | 36.130% | 60.280% | 3.590% |
| District 5 | | | | | | | | | | | | | | | | |
| Acadia | 57,576 | 44,480 | 10,864 | 238 | 573 | 1,421 | 42,943 | 34,071 | 7,383 | 173 | 400 | 916 | 37,678 | 30,555 | 6,407 | 716 |
| Allen | 22,750 | 16,327 | 4,490 | 246 | 947 | 740 | 17,510 | 12,751 | 3,275 | 182 | 646 | 656 | 12,201 | 9,478 | 2,217 | 506 |
| *Avoyelles | 21,832 | 18,312 | 2,672 | 120 | 402 | 326 | 16,634 | 14,217 | 1,760 | 90 | 310 | 257 | 13,561 | 12,103 | 1,163 | 295 |
| Beauregard | 36,549 | 29,529 | 4,649 | 402 | 1,052 | 917 | 27,489 | 22,304 | 3,495 | 269 | 773 | 648 | 22,294 | 18,771 | 2,369 | 1,154 |
| Caldwell | 9,645 | 7,646 | 1,632 | 51 | 150 | 166 | 7,478 | 5,969 | 1,224 | 46 | 116 | 123 | 6,031 | 5,124 | 818 | 89 |
| Catahoula | 8,906 | 5,776 | 2,395 | 46 | 119 | 570 | 6,951 | 4,557 | 1,736 | 33 | 87 | 538 | 6,467 | 4,639 | 1,770 | 58 |
| Concordia | 18,687 | 10,275 | 7,725 | 122 | 233 | 332 | 14,217 | 8,108 | 5,613 | 100 | 167 | 229 | 11,964 | 7,222 | 4,540 | 202 |
| Evangeline | 32,350 | 21,354 | 9,235 | 241 | 280 | 1,240 | 24,408 | 16,460 | 6,483 | 187 | 217 | 1,061 | 20,553 | 14,566 | 5,643 | 344 |
| Grant | 22,169 | 17,709 | 3,335 | 133 | 644 | 348 | 17,527 | 13,964 | 2,717 | 97 | 507 | 242 | 12,688 | 11,174 | 1,176 | 338 |
| Jackson | 15,031 | 9,967 | 4,166 | 175 | 255 | 468 | 11,783 | 7,967 | 3,125 | 140 | 174 | 377 | 9,449 | 6,647 | 2,610 | 192 |
| Jefferson Davis | 32,250 | 25,066 | 5,837 | 183 | 472 | 692 | 24,039 | 19,121 | 4,006 | 111 | 325 | 476 | 20,013 | 16,350 | 3,202 | 461 |

Splits

Plan: 22RS-1344 (W. Carter)

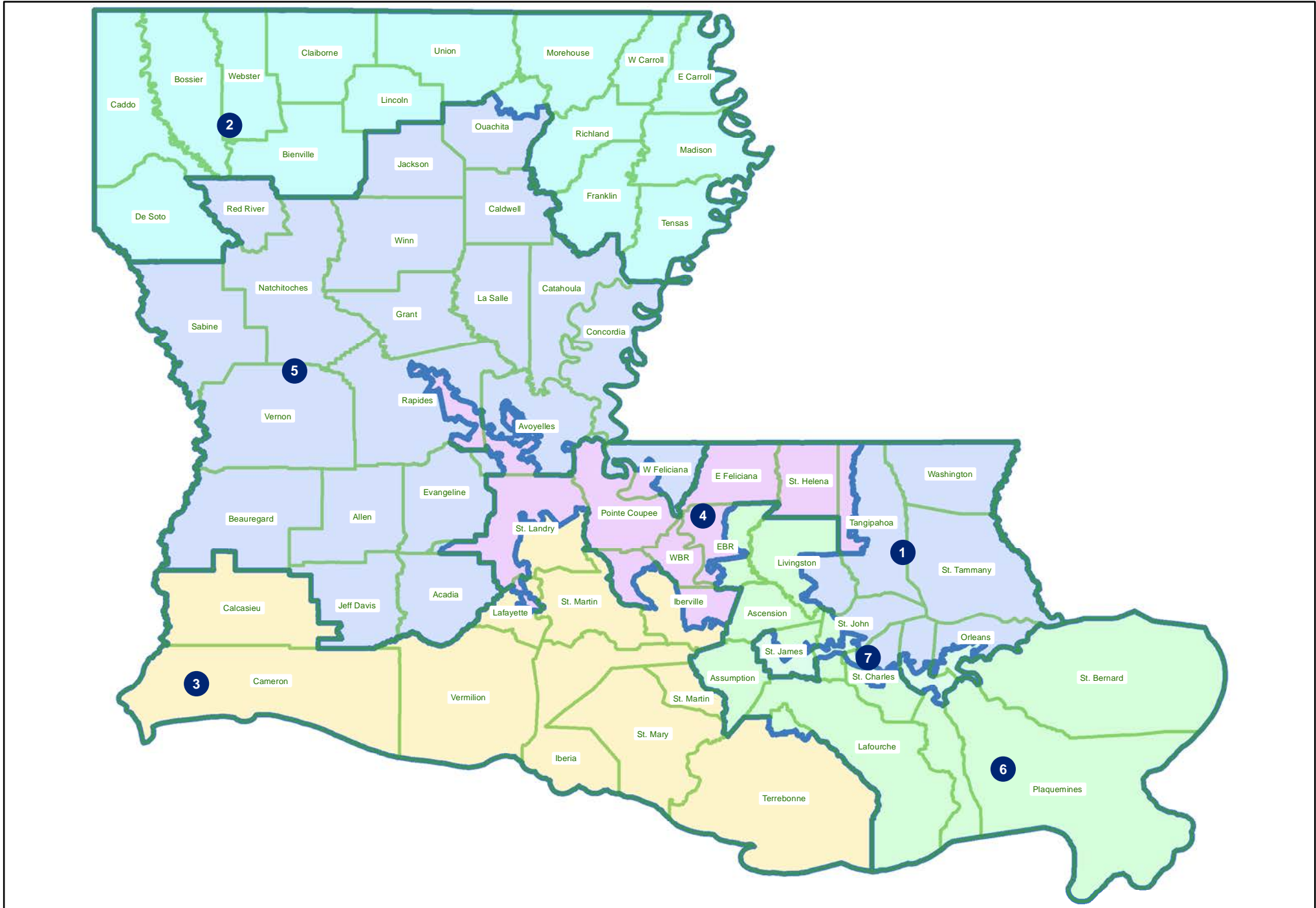
| | Total Population | Total White | Total Black | Total Asian | Total American Indian | Total Other | VAP Total | VAP White | VAP Black | VAP Asian | VAP American Indian | VAP Other | Reg Total Dec 2021 | Reg White Dec 2021 | Reg Black Dec 2021 | Reg Other Dec 2021 |
|-----------------------|---------------------|----------------|----------------|----------------|-----------------------------|----------------|-----------|-----------|-----------|-----------|---------------------------|-----------|-----------------------|-----------------------|-----------------------|-----------------------|
| District 5 | | | | | | | | | | | | | | | | |
| La Salle | 14,791 | 11,348 | 1,422 | 283 | 372 | 1,366 | 11,563 | 8,636 | 1,065 | 264 | 271 | 1,327 | 8,792 | 7,978 | 637 | 177 |
| Natchitoches | 37,515 | 19,361 | 15,725 | 255 | 861 | 1,313 | 29,349 | 16,010 | 11,415 | 198 | 683 | 1,043 | 23,107 | 12,850 | 9,224 | 1,033 |
| *Ouachita | 118,135 | 65,465 | 44,716 | 1,660 | 2,035 | 4,259 | 88,091 | 51,444 | 30,704 | 1,237 | 1,591 | 3,115 | 74,430 | 44,745 | 27,167 | 2,518 |
| *Rapides | 90,776 | 67,844 | 14,789 | 2,037 | 2,686 | 3,420 | 69,386 | 53,286 | 10,261 | 1,491 | 2,033 | 2,315 | 56,750 | 46,656 | 7,421 | 2,673 |
| Red River | 7,620 | 4,195 | 3,106 | 25 | 171 | 123 | 5,714 | 3,338 | 2,164 | 3 | 116 | 93 | 5,631 | 3,130 | 2,418 | 83 |
| Sabine | 22,155 | 15,036 | 3,861 | 94 | 2,723 | 441 | 17,064 | 12,054 | 2,655 | 66 | 1,970 | 319 | 14,547 | 11,023 | 2,184 | 1,340 |
| *St. Landry | 5,626 | 4,450 | 951 | 51 | 44 | 130 | 4,265 | 3,531 | 560 | 38 | 37 | 99 | 3,810 | 3,092 | 613 | 105 |
| Vernon | 48,750 | 35,087 | 7,611 | 1,442 | 1,600 | 3,010 | 36,261 | 26,765 | 5,133 | 1,074 | 1,160 | 2,129 | 24,060 | 19,182 | 3,011 | 1,867 |
| *West Feliciana | 14,510 | 10,684 | 3,146 | 89 | 221 | 370 | 12,202 | 9,147 | 2,513 | 56 | 170 | 316 | 6,735 | 4,962 | 1,647 | 126 |
| Winn | 13,755 | 8,594 | 3,727 | 210 | 263 | 961 | 10,906 | 6,932 | 2,695 | 170 | 207 | 902 | 8,406 | 5,988 | 2,292 | 126 |
| District 5 | 651,378 | 448,505 | 156,054 | 8,103 | 16,103 | 22,613 | 495,780 | 350,632 | 109,982 | 6,025 | 11,960 | 17,181 | 399,167 | 296,235 | 88,529 | 14,403 |
| | 100.000% | 68.855% | 23.958% | 1.244% | 2.472% | 3.472% | 100.000% | 70.723% | 22.184% | 1.215% | 2.412% | 3.465% | 80.513% | 74.213% | 22.178% | 3.608% |
| District 6 | | | | | | | | | | | | | | | | |
| Ascension | 126,500 | 81,141 | 32,216 | 2,300 | 2,004 | 8,839 | 91,957 | 61,136 | 22,139 | 1,514 | 1,390 | 5,778 | 79,917 | 56,800 | 18,814 | 4,303 |
| Assumption | 21,039 | 13,722 | 6,220 | 96 | 258 | 743 | 16,616 | 11,145 | 4,707 | 57 | 197 | 510 | 14,439 | 9,700 | 4,510 | 229 |
| *East Baton Rouge | 227,400 | 141,871 | 55,852 | 11,401 | 3,054 | 15,222 | 179,207 | 117,465 | 39,940 | 8,457 | 2,438 | 10,907 | 143,102 | 104,814 | 28,056 | 10,232 |
| *Jefferson | 10,523 | 7,659 | 1,258 | 481 | 415 | 710 | 8,053 | 6,009 | 882 | 359 | 299 | 504 | 7,145 | 5,807 | 786 | 552 |
| Lafourche | 97,557 | 71,710 | 15,855 | 1,025 | 4,224 | 4,743 | 74,619 | 56,838 | 11,077 | 738 | 2,777 | 3,189 | 58,278 | 48,467 | 7,164 | 2,647 |
| *Livingston | 130,829 | 107,250 | 11,607 | 1,614 | 2,901 | 7,457 | 96,332 | 80,888 | 7,408 | 1,055 | 2,147 | 4,834 | 76,898 | 69,278 | 4,754 | 2,866 |
| Plaquemines | 23,515 | 14,287 | 5,428 | 1,317 | 697 | 1,786 | 17,334 | 10,856 | 3,857 | 925 | 500 | 1,196 | 13,908 | 9,513 | 3,134 | 1,261 |
| St. Bernard | 43,764 | 24,497 | 12,309 | 1,381 | 947 | 4,630 | 31,775 | 18,992 | 7,944 | 982 | 688 | 3,169 | 25,653 | 18,233 | 5,497 | 1,923 |
| *St. Charles | 13,553 | 11,052 | 1,347 | 206 | 330 | 618 | 9,992 | 8,344 | 867 | 123 | 226 | 432 | 9,346 | 8,164 | 804 | 378 |
| *St. James | 8,914 | 6,100 | 2,594 | 38 | 37 | 145 | 6,777 | 4,706 | 1,912 | 17 | 28 | 114 | 6,263 | 4,428 | 1,740 | 95 |
| *St. John the Baptist | 4,454 | 3,025 | 1,115 | 19 | 58 | 237 | 3,583 | 2,532 | 820 | 8 | 52 | 171 | 3,009 | 2,112 | 823 | 74 |
| *Terrebonne | 23,697 | 14,959 | 5,793 | 284 | 1,258 | 1,403 | 17,702 | 11,872 | 3,897 | 192 | 841 | 900 | 12,765 | 9,281 | 2,712 | 772 |
| District 6 | 731,745 | 497,273 | 151,594 | 20,162 | 16,183 | 46,533 | 553,947 | 390,783 | 105,450 | 14,427 | 11,583 | 31,704 | 450,723 | 346,597 | 78,794 | 25,332 |
| | 100.000% | 67.957% | 20.717% | 2.755% | 2.212% | 6.359% | 100.000% | 70.545% | 19.036% | 2.604% | 2.091% | 5.723% | 81.366% | 76.898% | 17.482% | 5.620% |
| District 7 | | | | | | | | | | | | | | | | |
| *Jefferson | 195,285 | 64,073 | 93,540 | 11,094 | 3,245 | 23,333 | 148,427 | 53,000 | 68,194 | 8,683 | 2,503 | 16,047 | 113,160 | 42,874 | 55,850 | 14,436 |
| *Orleans | 315,366 | 73,944 | 211,470 | 9,996 | 2,860 | 17,096 | 249,167 | 66,151 | 159,811 | 8,280 | 2,295 | 12,630 | 208,782 | 53,717 | 137,406 | 17,659 |
| *St. Charles | 17,161 | 7,400 | 8,493 | 244 | 204 | 820 | 13,048 | 5,958 | 6,192 | 146 | 171 | 581 | 11,117 | 5,070 | 5,510 | 537 |
| *St. James | 11,278 | 3,873 | 7,168 | 22 | 45 | 170 | 8,728 | 3,177 | 5,385 | 14 | 36 | 116 | 8,703 | 2,826 | 5,761 | 116 |
| *St. John the Baptist | 33,772 | 8,418 | 22,807 | 360 | 324 | 1,863 | 25,562 | 7,018 | 16,697 | 294 | 240 | 1,313 | 23,023 | 6,106 | 15,677 | 1,240 |

Splits

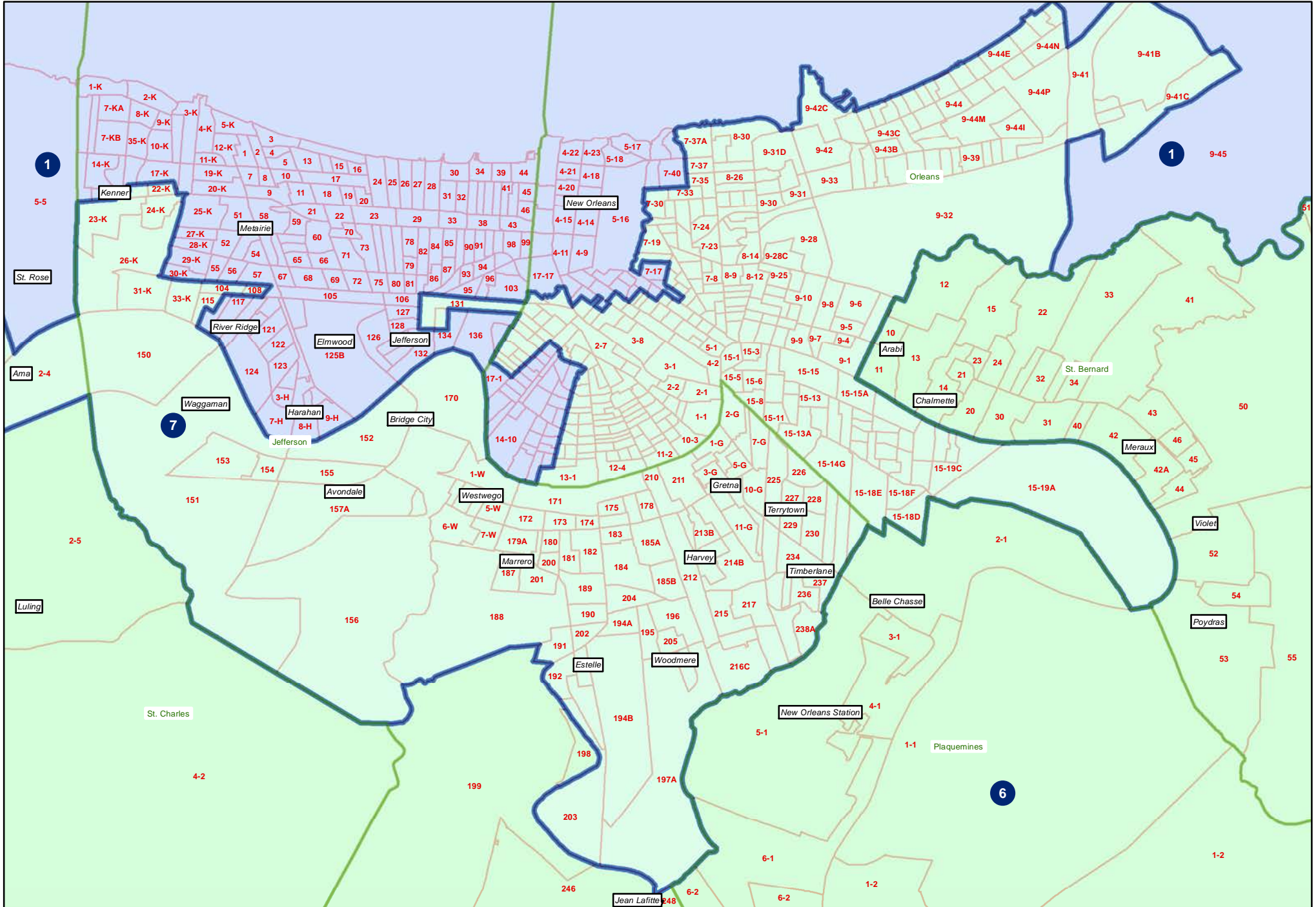
Plan: 22RS-1344 (W. Carter)

| | Total Population | Total White | Total Black | Total Asian | Total American Indian | Total Other | VAP Total | VAP White | VAP Black | VAP Asian | VAP American Indian | VAP Other | Reg Total Dec 2021 | Reg White Dec 2021 | Reg Black Dec 2021 | Reg Other Dec 2021 |
|------------|---------------------|--------------------|--------------------|------------------|-----------------------------|------------------|---------------------|--------------------|--------------------|------------------|---------------------------|------------------|-----------------------|-----------------------|-----------------------|-----------------------|
| District 7 | 572,862 100.000% | 157,708 27.530% | 343,478 59.958% | 21,716 3.791% | 6,678 1.166% | 43,282 7.555% | 444,932 100.000% | 135,304 30.410% | 256,279 57.600% | 17,417 3.915% | 5,245 1.179% | 30,687 6.897% | 364,785 81.987% | 110,593 30.317% | 220,204 60.365% | 33,988 9.317% |

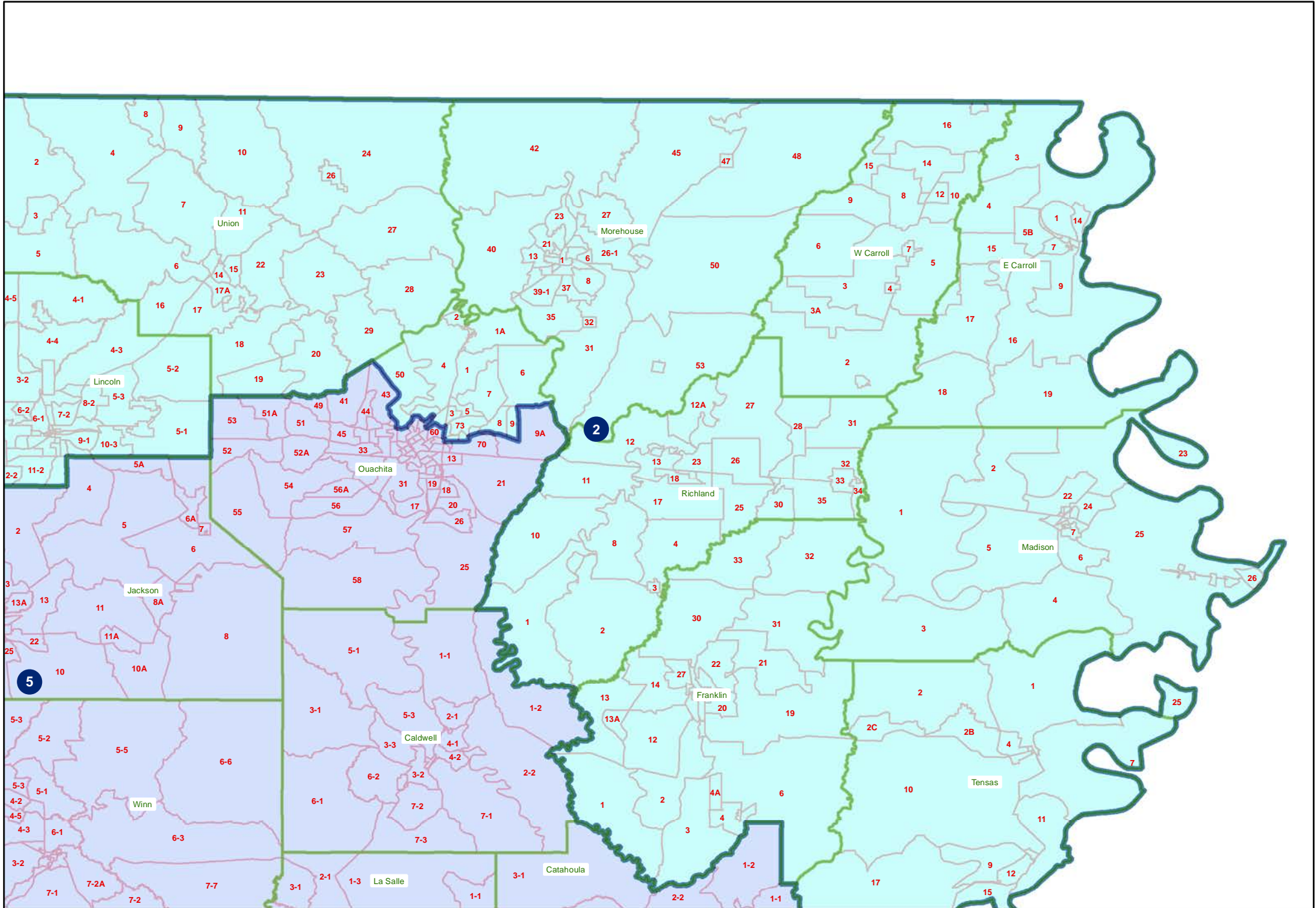
22RS-1344 (W. Carter)
Statewide



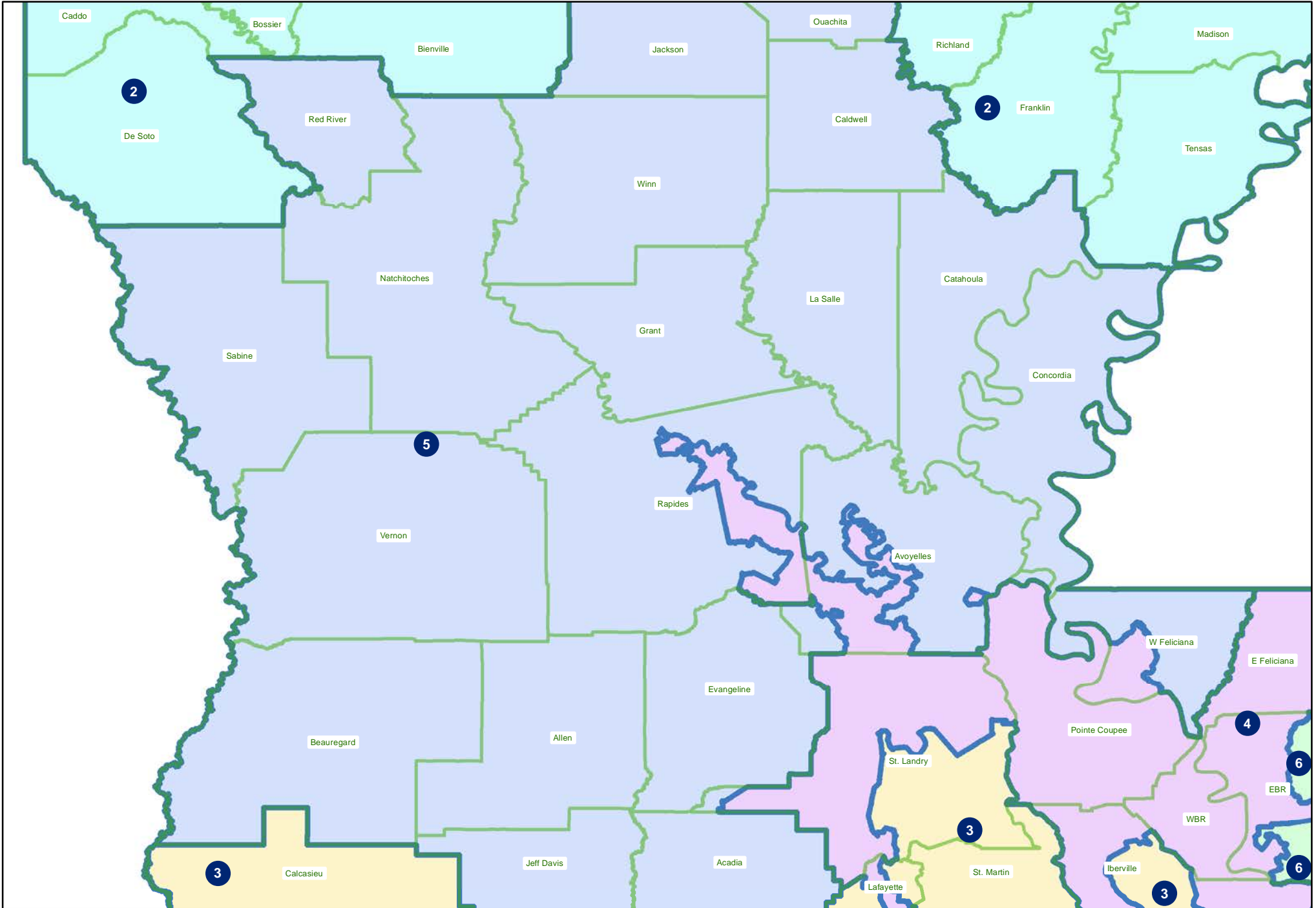
22RS-1344 (W. Carter)
Orleans and Jefferson



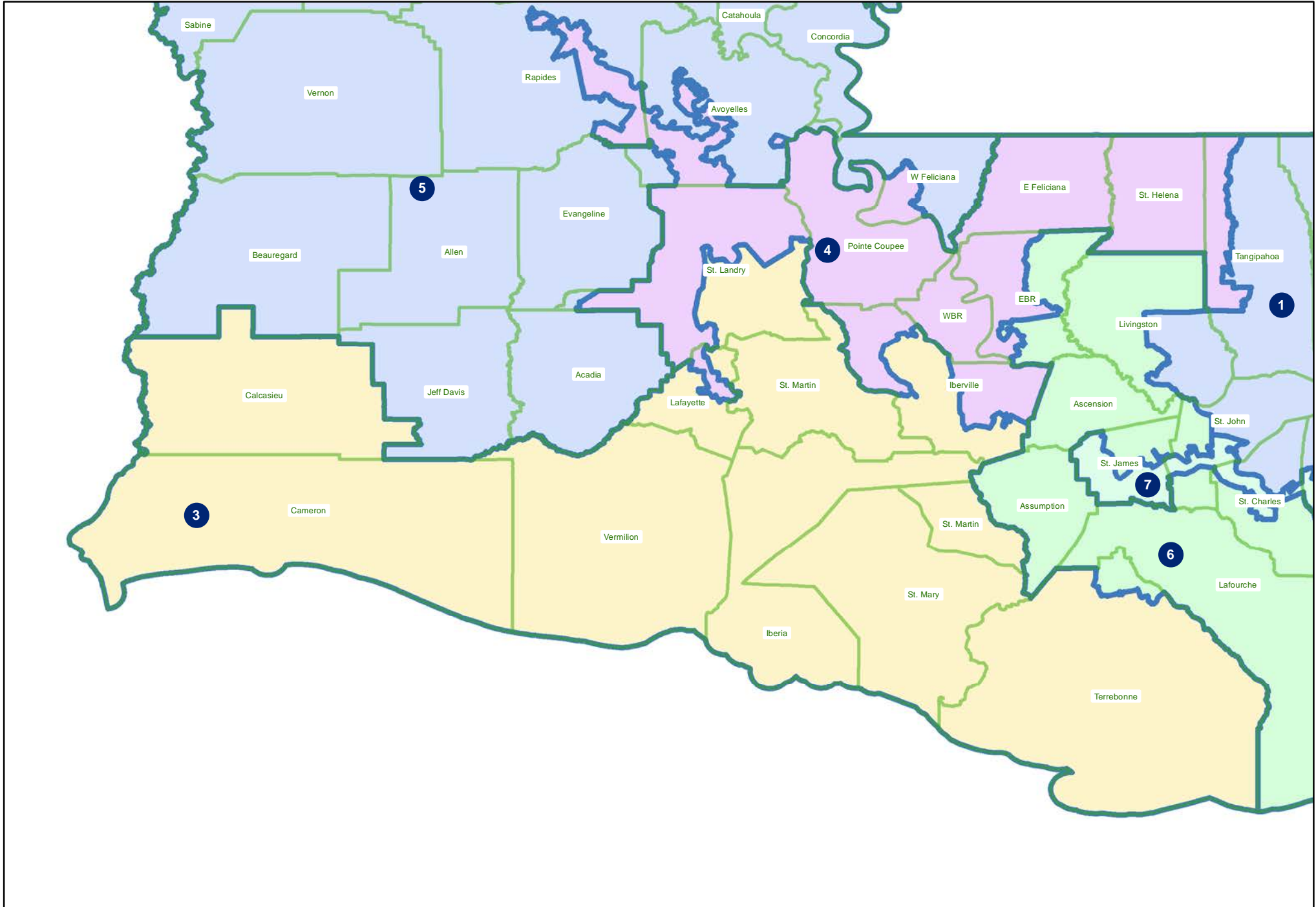
22RS-1344 (W. Carter)
Northeast



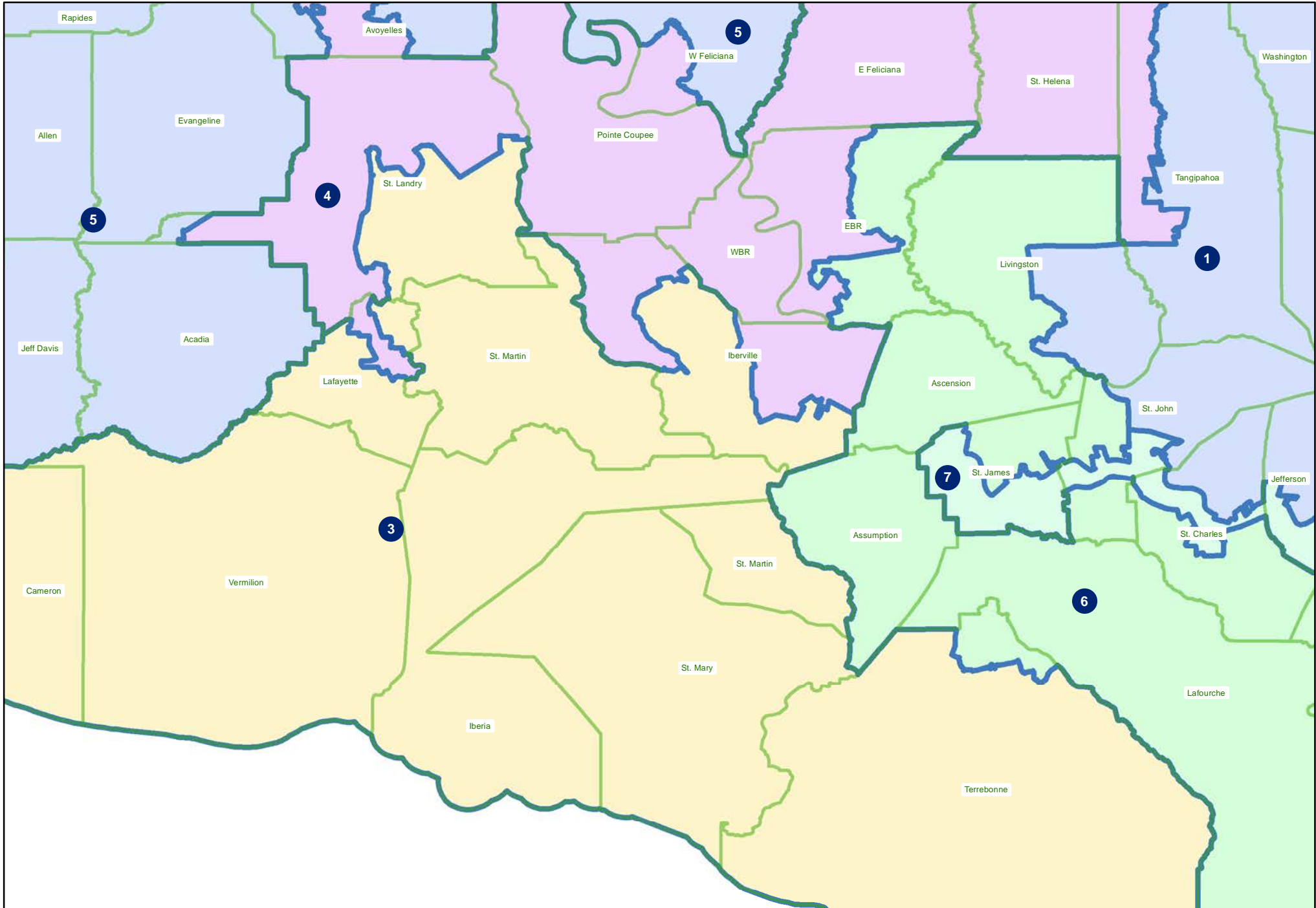
22RS-1344 (W. Carter)
Central



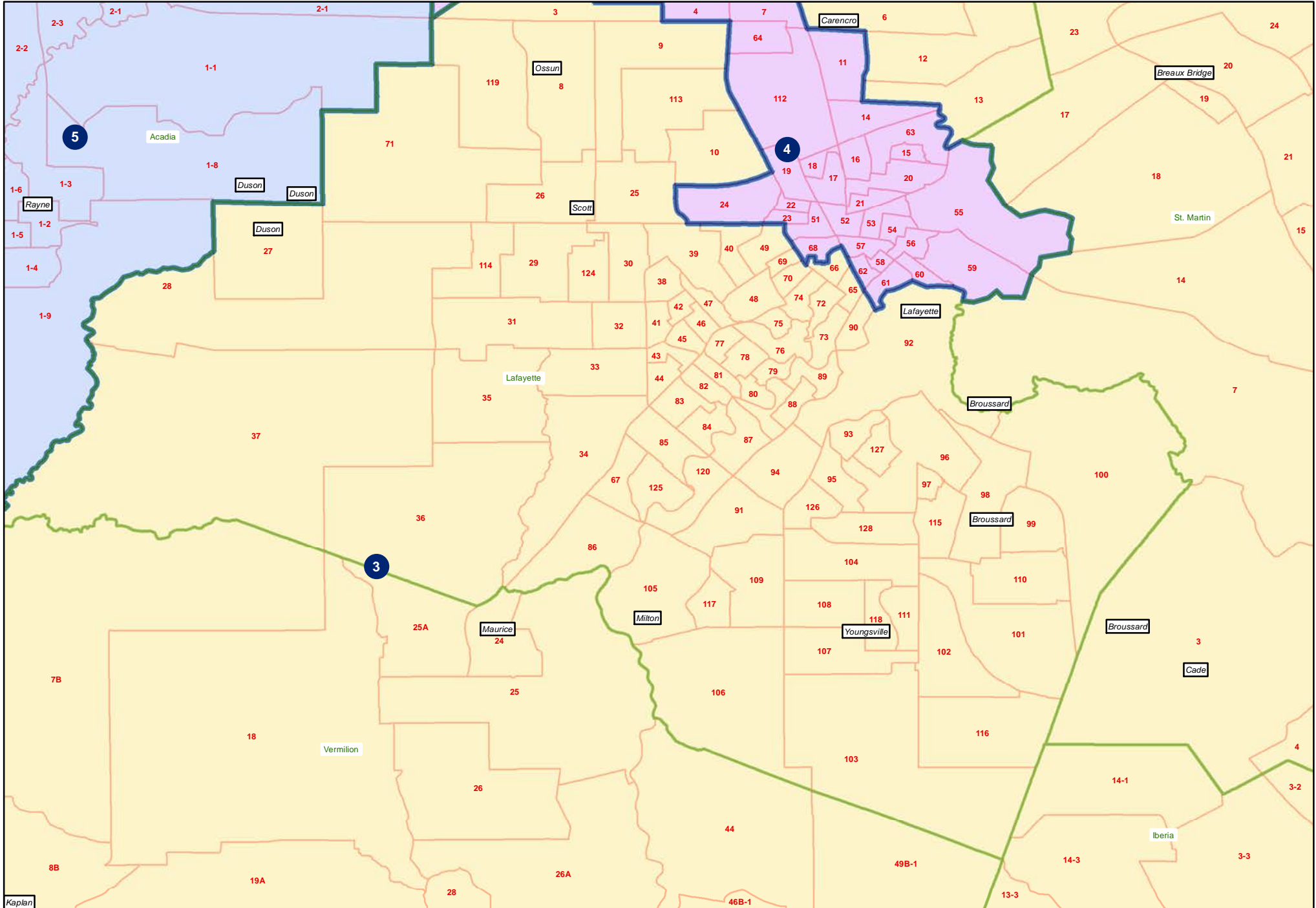
22RS-1344 (W. Carter)
Southwest



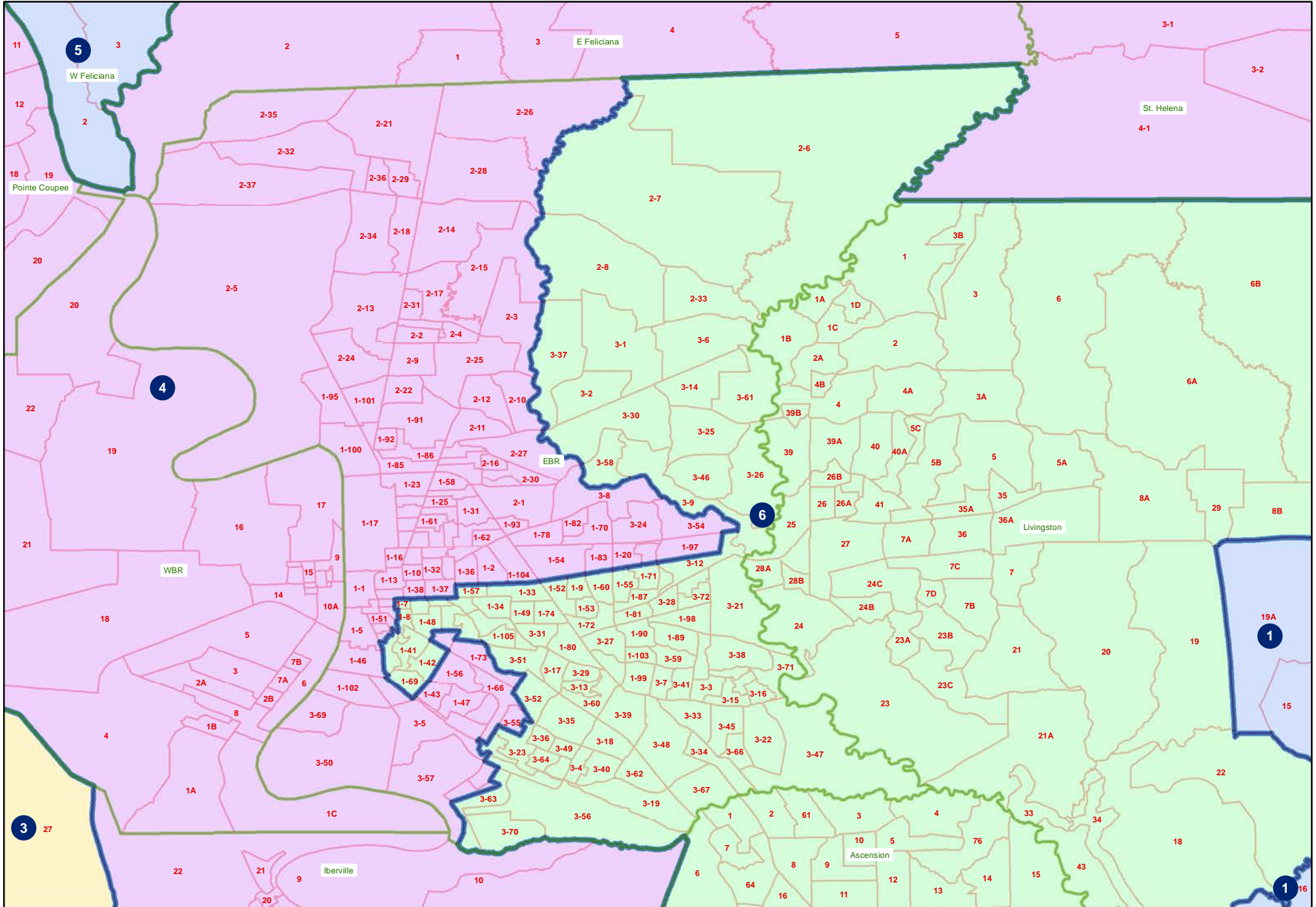
22RS-1344 (W. Carter)
Acadiana and Bayou Parishes



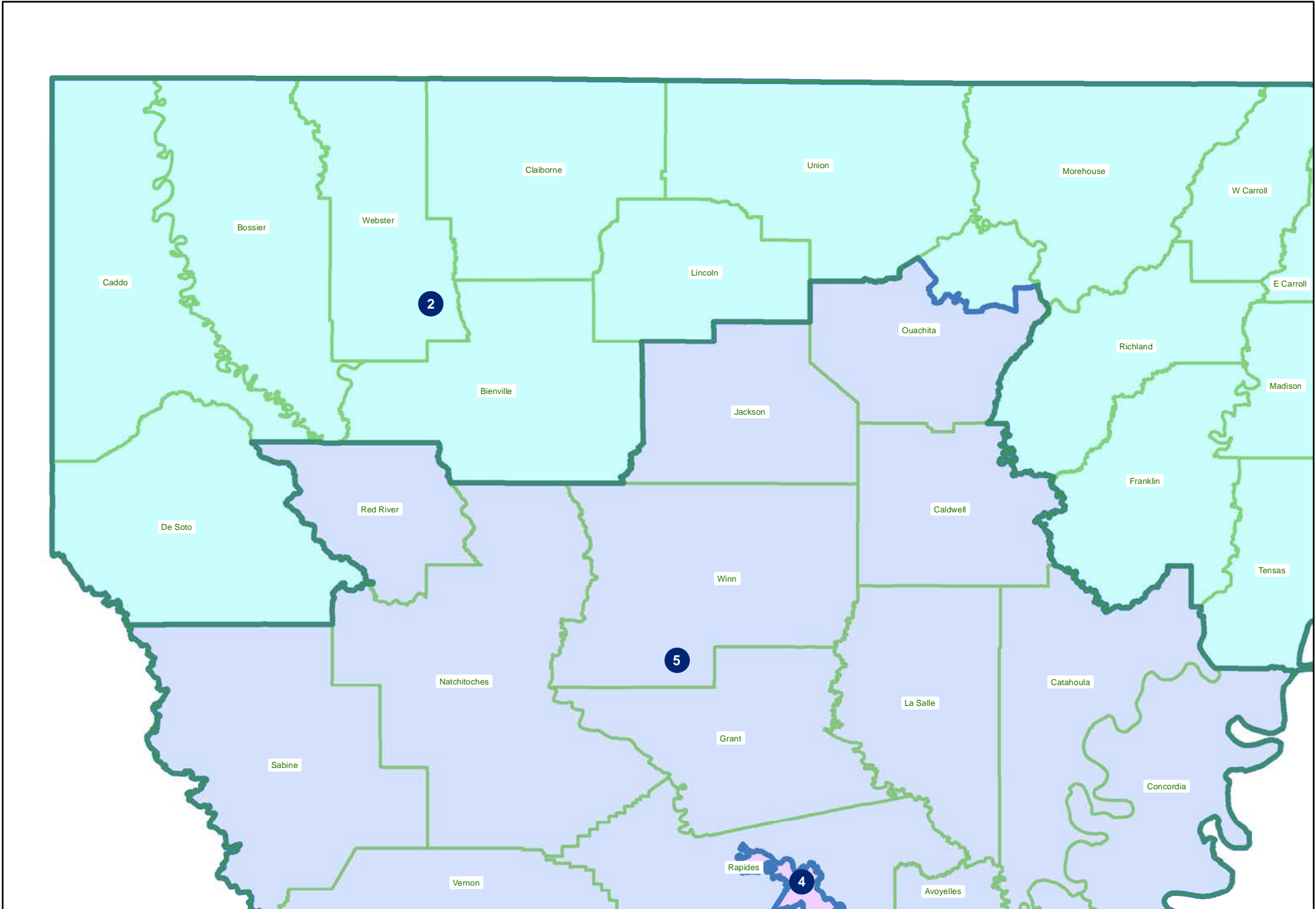
22RS-1344 (W. Carter)
Lafayette



22RS-1344 (W. Carter)
Baton Rouge



22RS-1344 (W. Carter)
Northwest



22RS-1344 (W. Carter)
Monroe

