

Regular Session, 2011

SENATE BILL NO. 170

BY SENATOR CHAISSON

Prefiled pursuant to Article III, Section 2(A)(4)(b)(i) of the Constitution of Louisiana.

SENATE. Provides for the redistricting of the Louisiana Senate.(gov sig)

AN ACT

To enact R.S. 24:35 and to repeal R.S. 24:35.1, relative to legislative redistricting; to provide for the redistricting of the Senate of the Legislature of Louisiana; to provide for effective dates; and to provide for related matters.

Be it enacted by the Legislature of Louisiana:

Section 1. R.S. 24:35 is hereby enacted to read as follows:

§35. Membership of the Senate

A. The Senate of the Legislature of Louisiana shall be composed of thirty-nine members. The state shall be divided into the following senatorial districts and one senator shall be chosen from each of the districts:

(1) District 1 is composed of Precincts 9-45 and 9-45A of Orleans Parish; Precincts 1-1, 1-2, 1-3 and 1-4 of Plaquemines Parish; Precincts 22, 24, 25, 33, 34, 41, 43, 45, 46, 52, 53, 54, 55, 56, 57 and 58 of St. Bernard Parish and Precincts 601, 602, 603, 604, 606, 705, 706, 801, 802, 803, 804, 805, 806, 807, 808, 809, 810, 811, 812, 813, 814, 815, 816, 817, 901, 902, 903, 904, 905, 906, 907, 908, 909, 910, 911, 912, 913, 914, 915, 916, 917, 918, 921, P01, S01, S02, S03, S04, S05, S06, S07, S08, S09, S10, S11, S12, S13, S15, S16, S17, S18, S19, S21, S22, S23,

S24 and S25 of St. Tammany Parish.

(2) District 2 is composed of Precincts 30, 36, 37, 39, 44, 45, 47, 48, 49, 50, 51, 52, 53, 54, 55, 56, 57 and 60 of Ascension Parish; Precincts 1-1, 1-2, 2-1, 2-2, 4-1, 4-2, 5-1, 5-2, 6-1, 6-2 and 7-1 of Assumption Parish; Precincts 1, 7, 8, 10, 11, 12, 13, 13B, 13C, 14A, and 22 (Part) that portion east of State Highway 1 of Iberville Parish; Precincts 1-2, 1-3, 1-4, 2-1, 2-1A, 2-3, 2-3A, 2-4, 2-4A, 2-5, 2-7, 2-9, 2-10, 5-1, 5-1A and 5-1B of Lafourche Parish; Precincts 1-1 of St. Charles Parish; Precincts 2, 3, 4, 5, 6, 7, 7-A, 12, 13, 14, 15, 15B, 16, 17, 17-A and 18 of St. James Parish; Precincts 1-2, 1-3, 1-4, 1-5, 2-1, 2-2, 2-3, 2-4, 3-1, 3-2, 3-3, 3-4, 4-1, 4-3 and 4-9 of St. John the Baptist Parish and Precincts 1-1, 2-1A, 3-1A, 3-1B, 3-2, 4-2, 4-3A, 4-3B, 4-4, 4-5 and 5-1 of West Baton Rouge Parish.

(3) District 3 is composed of Precincts 171, 172, 173, 174, 175, 179A, 179B, 180, 181, 182, 187, 188, 189, 200, 201, 210, 211, 212A (Part) that portion east of State Highway 3017 and north of Lapalco Blvd., 1-G and 2-G of Jefferson Parish; Precincts 6-1, 7-25A, 7-35, 7-37, 7-40, 8-1, 8-19, 8-20, 8-21, 8-22, 8-23, 8-24, 8-25, 8-26, 8-27, 9-1, 9-3, 9-3A, 9-4, 9-5, 9-5A, 9-6B, 9-6C, 9-6D, 9-6E, 9-6F, 9-7, 9-8, 9-8A, 9-9, 9-10, 9-11, 9-12, 9-13, 9-14, 9-15, 9-16, 9-25, 9-26, 9-28, 9-28C, 9-28E, 9-29, 9-30, 9-30A, 9-31, 9-31A, 9-31B, 9-32, 9-39, 9-39B, 9-40, 9-40A, 9-40C, 9-41, 9-41A, 9-41B, 9-41C, 9-41D, 9-43M, 9-44, 9-44I, 9-44L, 9-44M, 9-44N, 9-44P, 9-44Q, 15-1 and 15-5 of Orleans Parish and Precincts 10, 11, 12, 13, 14, 15, 16, 20, 21, 23, 30, 31, 32, 40, 42, 44, 50 and 51 of St. Bernard Parish.

(4) District 4 is composed of Precincts 3-14, 3-19, 3-20, 4-2, 4-5, 4-6, 4-7, 4-8, 4-9, 4-11, 4-14, 4-15, 4-17, 4-17A, 4-18, 4-20, 4-21, 4-22, 4-23, 5-1, 5-2, 5-3, 5-4, 5-8, 5-9, 5-10, 5-11, 5-12, 5-13, 5-15, 5-16, 5-17, 5-18, 6-2, 6-4, 6-7, 6-8, 6-9, 7-1, 7-2, 7-4, 7-5, 7-7, 7-8, 7-9A, 7-12, 7-15, 7-16, 7-17, 7-18, 7-19, 7-23, 7-24, 7-25, 7-26, 7-27, 7-27B, 7-28, 7-28A, 7-29, 7-30, 7-32, 7-33, 7-34, 7-37A, 7-41, 7-42, 8-2, 8-4, 8-6, 8-7, 8-8, 8-9, 8-12, 8-13, 8-14, 8-15, 8-28, 8-30, 9-17, 9-19, 9-21, 9-23, 9-31D, 9-33, 9-34A, 9-35, 9-35A, 9-36, 9-36B, 9-37, 9-38, 9-38A, 9-42,

1 9-42C, 9-43A, 9-43B, 9-43C, 9-43E, 9-43F, 9-43G, 9-43H, 9-43I, 9-43J, 9-43K,
 2 9-43L, 9-43N, 9-44A, 9-44B, 9-44D, 9-44E, 9-44F, 9-44G, 9-44J, 9-44O, 17-17,
 3 17-18, 17-18A, 17-19 and 17-20 of Orleans Parish.

4 (5) District 5 is composed of Precincts 107, 131 and 133 of Jefferson
 5 Parish and Precincts 1-1, 1-2, 1-5, 1-6, 2-1, 2-2, 2-3, 2-4, 2-6, 2-6A, 2-7, 3-1, 3-3,
 6 3-5, 3-8, 3-9, 3-12, 3-15, 3-18, 4-3, 4-4, 5-5, 5-7, 6-6, 7-6, 7-10, 7-11, 7-13, 7-14,
 7 7-20, 7-21, 10-3, 10-6, 10-7, 10-8, 10-9, 10-11, 10-12, 10-13, 10-14, 11-2, 11-3,
 8 11-4, 11-5, 11-8, 11-9, 11-10, 11-11, 11-12, 11-13, 11-14, 11-17, 12-1, 12-2, 12-3,
 9 12-4, 12-5, 12-6, 12-7, 12-8, 12-9, 12-10, 12-11, 12-12, 12-13, 12-14, 12-16, 12-17,
 10 12-19, 13-1, 13-2, 13-3, 13-4, 13-5, 13-6, 13-7, 13-8, 13-9, 13-10, 13-11, 13-12,
 11 13-13, 13-14, 13-15, 13-16, 14-12, 14-13A, 14-17, 14-18A, 14-19, 14-20, 14-21,
 12 14-23, 14-24A, 14-25, 14-26, 16-2, 16-3, 16-4, 16-5, 16-6, 16-7, 16-8, 16-9, 17-2,
 13 17-3, 17-4, 17-5, 17-6, 17-7, 17-8, 17-9, 17-10, 17-11, 17-12, 17-13, 17-13A, 17-14,
 14 17-15 and 17-16 of Orleans Parish.

15 (6) District 6 is composed of Precincts 1-98, 2-6, 2-8, 3-1, 3-2, 3-3, 3-9,
 16 3-12, 3-15, 3-16, 3-21, 3-22, 3-25, 3-26, 3-28, 3-30, 3-32, 3-33, 3-34, 3-37, 3-38,
 17 3-43, 3-45, 3-46, 3-47 and 3-53 of East Baton Rouge Parish; Precinct 9 of
 18 Livingston Parish; Precincts 4-1, 4-2 and 5-1 of St. Helena Parish and Precincts
 19 40, 40A, 42, 42A, 45, 45A, 46, 47, 48, 49, 70, 70A, 71, 72, 72A, 73, 74, 117, 121,
 20 121A, 125, 127, 127A, 133, 133A, 137B, 139, 141, 149A and 151 of Tangipahoa
 21 Parish.

22 (7) District 7 is composed of Precincts 195, 196, 197A, 197B, 197C, 205,
 23 213A, 213B, 213C, 214A, 214B, 225, 226, 232A, 232B, 3-G, 4-G, 5-G, 6-G, 7-G,
 24 8-G, 9-G, 10-G and 11-G of Jefferson Parish; Precincts 15-2, 15-3, 15-6, 15-8,
 25 15-9, 15-10, 15-11, 15-12, 15-12A, 15-13, 15-13A, 15-13B, 15-14, 15-14A, 15-14B,
 26 15-14C, 15-14D, 15-14E, 15-14F, 15-14G, 15-15, 15-15A, 15-15B, 15-16, 15-17,
 27 15-17A, 15-17B, 15-18, 15-18A, 15-18B, 15-18C, 15-18D, 15-18E, 15-18F, 15-19,
 28 15-19A, 15-19B and 15-19C of Orleans Parish and Precincts 2-1, 3-1, 4-1 and 5-2
 29 of Plaquemines Parish.

1 **(8) District 8 is composed of Precincts 150, 151, 152, 153, 154, 155, 156,**
2 **157A, 157B, 170, 176, 177, 178, 183, 184, 185A, 185B, 190, 191, 192, 193, 194A,**
3 **194B, 198, 199, 202, 203, 204, 212A (Part) that portion west of State Highway**
4 **3017 and north of Lapalco Blvd., and that portion south of Lapalco Blvd., 212B,**
5 **215, 216A, 216B, 217, 227, 228, 229, 230, 231, 234, 235, 236, 237, 238, 246, 247,**
6 **248, 12-G, 13-G, 1-GI, 1-L, 1-W, 2-W, 3-W, 4-W, 5-W, 6-W and 7-W of**
7 **Jefferson Parish and Precincts 5-1, 6-1, 6-2, 6-3, 6-4, 7-1, 7-3, 8-1, 9-1 and 9-3 of**
8 **Plaquemines Parish.**

9 **(9) District 9 is composed of Precincts 12, 13, 14, 15, 16, 17, 18, 19, 20,**
10 **22, 23, 24, 25, 26, 27, 28, 29, 30, 31, 32, 33, 34, 35, 36, 37, 38, 39, 40, 41, 42, 43, 44,**
11 **45, 46, 60, 66, 69, 70, 71, 72, 73, 74, 75, 76, 77, 78, 79, 80, 81, 82, 83, 84, 85, 86, 87,**
12 **88, 89, 90, 91, 92, 93, 94, 95, 96, 97, 98, 99, 100, 101, 102, 103, 106, 127, 128, 129,**
13 **130, 132, 134, 136 and 138 of Jefferson Parish and Precincts 14-1, 14-2, 14-3,**
14 **14-4, 14-5, 14-6, 14-7, 14-8, 14-9, 14-10, 14-11, 14-14, 14-15, 14-16, 16-1, 16-1A**
15 **and 17-1 of Orleans Parish.**

16 **(10) District 10 is composed of Precincts 1, 2, 3, 4, 5, 7, 8, 9, 10, 11, 21,**
17 **51, 52, 53, 54, 55, 56, 57, 58, 59, 61, 62, 63, 64, 65, 67, 68, 105, 116, 117, 118, 119,**
18 **120, 121, 122, 123, 124, 125, 126, 1-H, 2-H, 3-H, 4-H, 5-H, 6-H, 7-H, 8-H, 9-H,**
19 **1-K, 2-K, 3-K, 4-K, 5-K, 6-K, 7-K, 8-K, 9-K, 10-K, 11-K, 12-K, 13-KA, 14-K,**
20 **15-K, 16-K, 17-K, 18-K, 19-K, 20-K, 25-K, 26-K (Part) that portion northeast**
21 **of Illinois Central Railroad, 27-K, 28-K, 34-K and 35-K of Jefferson Parish.**

22 **(11) District 11 is composed of Precincts 101, 102, 103, 104, 105, 106,**
23 **107, 304, 305, 306, 307, 308, 309, 310, 311, 312, 313, 401, 402, 403, 404, 405, 406,**
24 **407, 408, 409, 410, 411, 412, 413, 414, 415, 416, 417, 418, 419, 420, 421, 422, 423,**
25 **424, 426, 427, 605, 607, 701, 702, 703, 704, A01, A02, A03, A04, C01, C02, C03,**
26 **C04, C05, C06, C07, C08, C09, C10, C11, M01, M02, M03, M04, M05, M06,**
27 **M07, M08, M09, M10 and MD1 of St. Tammany Parish and Precincts 120,**
28 **120B, 122, 122A, 124, 141A, 143 and 145 of Tangipahoa Parish.**

29 **(12) District 12 is composed of Precincts 201, 202, 203, 204, 205, 206,**

1 207, 301, 302, 303, 501, 502, 503, 504, 505 and F01 of St. Tammany Parish;
 2 Precincts 1, 2, 6, 11, 15, 16, 17, 18, 26, 27, 27A, 28, 28A, 33, 41, 43, 44, 101, 102,
 3 103, 104, 104A, 105, 106, 106A, 106B, 107, 108, 109, 109A, 110, 111, 111A, 112,
 4 114, 115B, 116, 118, 119, 120A, 121B, 123, 129 and 129A of Tangipahoa Parish
 5 and Washington Parish.

6 (13) District 13 is composed of Precincts 3-6 and 3-14 of East Baton
 7 Rouge Parish; Precincts 1, 1A, 1B, 1C, 1D, 2, 2A, 3, 3A, 4, 4A, 5, 5A, 5B, 6, 6A,
 8 6B, 7, 7A, 8A, 8B, 10, 11, 11A, 12, 13A, 13B, 19, 20, 23, 23A, 23B, 24, 24A, 24B,
 9 24C, 24D, 25, 26, 26A, 26B, 26C, 27, 28A, 28B, 29, 30, 35, 35A, 36, 36A, 39, 39A,
 10 40, 40A and 41 of Livingston Parish and Precincts 137, 137A, 137C, 137D and
 11 149 of Tangipahoa Parish.

12 (14) District 14 is composed of Precincts 1-1, 1-3, 1-4, 1-5, 1-6, 1-10, 1-13,
 13 1-14, 1-15, 1-16, 1-17, 1-18, 1-19, 1-21, 1-22, 1-23, 1-24, 1-25, 1-26, 1-27, 1-28,
 14 1-29, 1-30, 1-31, 1-32, 1-36, 1-37, 1-38, 1-39, 1-45, 1-46, 1-50, 1-51, 1-57, 1-58,
 15 1-59, 1-61, 1-62, 1-63, 1-64, 1-65, 1-67, 1-68, 1-73, 1-85, 1-100, 1-102, 1-107, 3-5,
 16 3-20, 3-23, 3-44, 3-50 and 3-55 of East Baton Rouge Parish.

17 (15) District 15 is composed of Precincts 1-2, 1-54, 1-55, 1-60, 1-70, 1-71,
 18 1-77, 1-78, 1-81, 1-82, 1-83, 1-84, 1-86, 1-87, 1-88, 1-91, 1-92, 1-93, 1-94, 1-95,
 19 1-97, 1-101, 1-104, 2-1, 2-2, 2-3, 2-4, 2-5, 2-9, 2-10, 2-11, 2-12, 2-13, 2-14, 2-15,
 20 2-16, 2-17, 2-18, 2-19, 2-20, 2-22, 2-23, 2-24, 2-25, 2-27, 2-28, 2-30, 2-31, 3-8, 3-24,
 21 3-42 and 3-54 of East Baton Rouge Parish.

22 (16) District 16 is composed of Precincts 1-7, 1-8, 1-9, 1-12, 1-33, 1-34,
 23 1-35, 1-40, 1-41, 1-42, 1-43, 1-44, 1-47, 1-48, 1-49, 1-52, 1-53, 1-56, 1-66, 1-69,
 24 1-72, 1-74, 1-75, 1-80, 1-89, 1-90, 1-99, 1-103, 1-105, 3-4, 3-7, 3-10, 3-11, 3-13,
 25 3-17, 3-18, 3-19, 3-27, 3-29, 3-31, 3-35, 3-36, 3-39, 3-40, 3-41, 3-48, 3-49, 3-51 and
 26 3-52 of East Baton Rouge Parish.

27 (17) District 17 is composed of Precincts 2-3, 3-1, 3-2, 5-3, 5-4, 7-2, 8-1
 28 and 9-1 of Assumption Parish; Precincts 2-7, 2-21, 2-26, 2-29 and 2-32 of East
 29 Baton Rouge Parish; East Feliciana Parish; Precincts 2, 3, 4, 5, 6, 6A, 13A, 14,

1 14B, 15, 15A, 15B, 16, 17, 17A, 18, 19, 19A, 20, 21, 22 (Part) that portion west
 2 of State Highway 1, 23, 24, 25, 25A, 25B, 26, 26A, 27, 28, 29, 30, 31 and 32 of
 3 Iberville Parish; Pointe Coupee Parish; Precincts 1-1, 1-2, 2-1, 2-2, 3-1, 3-2, 3-3,
 4 5-2, 6-1 and 6-2 of St. Helena Parish; Precincts 1-2 and 1-5 of St. Martin Parish
 5 and Precincts 2-1B, 2-2, 2-3, 4-1, 6-1, 6-2, 7-1, 7-2, 7-3 and 7-4 of West Baton
 6 Rouge Parish and Precincts 2-2 and 7-2 of West Feliciana Parish.

7 (18) District 18 is composed of Precincts 1, 2, 3, 4, 5, 6, 7, 8, 9, 10, 11, 12,
 8 13, 14, 15, 16, 17, 18, 19, 20, 21, 22, 23, 24, 25, 26, 27, 28, 31, 32, 33, 34, 35, 40, 41,
 9 42, 43, 58 and 61 of Ascension Parish; Precincts 7B, 14, 15, 16, 17, 18, 21, 22, 31,
 10 32, 33, 34, 38 and 43 of Livingston Parish and Precincts 8, 8-A, 9, 10 and 11 of
 11 St. James Parish.

12 (19) District 19 is composed of Precincts 104, 108, 115, 13-KB, 21-K,
 13 22-K, 23-K, 24-K, 26-K (Part) that portion southwest of Illinois Central
 14 Railroad, 29-K, 30-K, 31-K and 33-K of Jefferson Parish; Precincts 3-1, 3-2, 3-3,
 15 3-4, 3-5, 3-6, 4-1, 6-3, 7-1, 7-2, 7-3 and 7-4 of Lafourche Parish; Precincts 1-2,
 16 1-3, 1-5, 1-6, 2-1, 2-2, 2-3, 2-4, 2-5, 3-1, 3-2, 3-3, 3-4, 3-5, 3-6, 4-1, 4-2, 4-3, 4-4,
 17 5-1, 5-2, 5-3, 5-4, 5-5, 6-1, 6-2, 6-3, 6-4, 6-5, 6-6, 6-7, 6-8, 7-1, 7-2, 7-3 and 7-4 of
 18 St. Charles Parish and Precincts 1-1, 4-2, 4-4, 4-8, 5-1, 5-2, 5-3, 5-4, 5-5, 5-6, 5-7,
 19 6-1, 6-3, 6-4, 7-2, 7-3, 7-4, 7-5 and 7-7 of St. John the Baptist Parish.

20 (20) District 20 is composed of Precincts 2-12, 2-13, 2-14, 4-2, 4-3, 4-4,
 21 4-5, 4-6, 8-1, 9-1, 9-2, 10-1, 10-2, 10-3, 10-4, 10-5, 10-6, 10-7, 10-8, 10-9, 10-10,
 22 10-11, 10-12, 10-13, 10-14, 10-15, 10-16, 11-1, 11-2, 11-3 and 11-4 of Lafourche
 23 Parish and Precincts 14, 19, 20, 21, 23, 24, 25, 27, 28, 29, 31, 32, 33, 34, 35, 36,
 24 38, 40, 41, 42, 43, 44, 45, 46, 47, 48, 49, 52, 53, 54, 55, 56, 57, 58, 59, 60, 61, 62, 63,
 25 68, 70, 71, 72, 73, 78, 80, 82, 83, 88 and 89 of Terrebonne Parish.

26 (21) District 21 is composed of Precincts 6-3, 11-1, 11-2, 11-3, 11-4, 11-5,
 27 12-1, 12-2 and 12-3 of Iberia Parish; Precincts 1-1, 2-2, 2-6, 2-8, 2-11, 5-2, 6-1,
 28 6-2 and 6-4 of Lafourche Parish; St. Mary Parish and Precincts 1, 4, 5, 7, 8, 9,
 29 10, 11, 12, 13, 15, 17, 18, 51, 64, 65, 66, 67, 69, 74, 76, 81, 84, 85, 86, 87 and 90 of

Terrebonne Parish.

(22) District 22 is composed of Precincts 1-1, 1-2, 1-3, 2-1, 2-2, 2-3, 3-1, 3-2, 3-3, 3-4, 4-1, 4-2, 4-3, 4-4, 5-1, 5-2, 5-3, 5-4, 5-5, 6-1, 6-2, 6-4, 7-1, 7-2, 7-3, 7-4, 7-5, 8-1, 8-2, 8-4, 8-5, 9-1, 9-2, 9-3, 9-4, 9-5, 10-2, 10-3, 10-4, 10-5, 10-6, 10-7, 12-4, 13-1, 13-2, 13-3, 13-4, 14-1, 14-3 and 14-4 of Iberia Parish; Precincts 99 and 100 of Lafayette Parish; Precincts 3-1, 3-3, 3-5, 4-5, 4-7, 4-12 and 4-13 of St. Landry Parish and Precincts 1-1, 1-3, 1-4, 1-7, 2-1, 2-2, 2-3, 2-4, 3-1, 3-1A, 3-1B, 3-2, 3-3, 3-4, 3-4A, 3-5, 3-6, 3-9, 4-1, 4-1A, 4-2, 4-3, 4-4, 4-4A, 4-5, 4-6, 5-1, 5-2, 5-3, 5-4, 6-1, 6-2, 6-3, 6-3A, 6-3B, 6-4, 7-1A, 7-2A, 7-4, 7-4A, 8-1, 8-3, 8-4, 8-4A, 9-1, 9-2, 9-3, 9-4 and 9-5 of St. Martin Parish.

(23) District 23 is composed of Precincts 30A, 33, 34, 38, 39, 40, 41, 42, 43, 44, 45, 46, 47, 48, 49, 60, 65, 66, 67, 69, 70, 72, 73, 74, 75, 76, 77, 78, 79, 80, 81, 82, 83, 84, 85, 86, 87, 88, 89, 90, 91, 92, 93, 94, 95, 96, 97A, 97B, 98, 101, 102, 103, 104, 105, 106, 107, 108, 109, 110 and 111 of Lafayette Parish.

(24) District 24 is composed of Precincts 2, 4, 5, 6, 7, 9, 10, 11, 12, 13, 14, 15, 16, 17, 18, 19, 20, 21, 22, 23, 24, 25, 50, 51, 52, 53, 54, 55, 56, 57, 58, 59, 61, 62, 63, 64 and 68 of Lafayette Parish; Precincts 1-1, 1-2, 1-2A, 1-3, 1-3A, 1-4, 1-4A, 1-6, 1-7, 1-8, 1-9, 1-10, 1-11, 1-12, 1-13, 1-14, 1-15, 1-15A, 1-16, 1-17, 1-18, 1-20, 1-21, 1-22, 1-23, 1-25, 1-26, 1-26A, 1-28, 1-28A, 1-29, 2-1, 2-4, 3-2, 3-4, 3-6, 4-2, 4-3, 4-4, 4-6, 4-8, 4-9, 4-10, 4-11, 4-12A, 5-3, 5-6 (Part) except that portion north of State Highway 103 and west of Interstate Highway 49, 6-1, 6-3, 6-4, 6-10, 6-11A, 6-15 and 6-16 of St. Landry Parish and Precincts 6-2A, 7-1 and 7-3 of St. Martin Parish.

(25) District 25 is composed of Precincts 2-2, 2-3, 2-4, 2-5, 4-1, 4-2, 4-3, 4-4, 4-5, 4-6, 5-1A, 5-1B, 5-2A, 5-2B, 5-3, 5-4, 5-5, 6-1, 6-2, 6-3A, 6-3B, 6-4, 6-5, 6-6, 6-7, 6-8, 6-9, 6-10, 6-11, 6-12, 6-13, 6-14, 6-15, and 6-16 of Acadia Parish; Precincts 260, 261, 262, 333, 336, 337, 338, 339, 362, 363, 364, 365, 366, 367N, 367S, 368, 369, 370, 371N, 371S, 800, 801, 860N, 860S, 861E and 861W of Calcasieu Parish; Cameron Parish and Jefferson Davis Parish.

1 **(26) District 26 is composed of Precincts 1-1, 1-2A, 1-2B, 1-3A, 1-3B,**
2 **1-4A, 1-4B, 1-5A, 1-5B, 1-6, 1-7, 1-8, 1-9, 2-1, 3-1, 3-3A, 3-3B, 3-4, 3-6 and 3-7**
3 **of Acadia Parish; Precincts 1, 3, 8, 26, 27, 28A, 28B, 29, 31, 32, 35, 36, 37 and 71**
4 **of Lafayette Parish; Precincts 2-2, 2-3, 2-5, 2-6, 2-7, 2-8 and 2-9 of St. Landry**
5 **Parish and Vermilion Parish.**

6 **(27) District 27 is composed of Precincts 162E, 162W, 163, 164, 165, 166,**
7 **167, 300, 301, 302, 303, 304, 305, 306, 307, 308, 309E, 309W, 310, 311, 312, 313E,**
8 **313W, 314, 315E, 315W, 316E, 316W, 317, 318, 319, 320, 321, 322, 323, 324, 325,**
9 **326, 327, 328, 329, 330, 331, 332N, 332S, 334, 335, 360, 361, 400, 401, 402, 403,**
10 **404, 405, 406, 407, 408, 440, 441, 461, 462, 463, 464, 466E, 466W, 467, and 468**
11 **of Calcasieu Parish.**

12 **(28) District 28 is composed of Precincts 3-2, 3-5, 7-2, 7-3, and 7-4 of**
13 **Acadia Parish; Allen Parish; Precincts 2-1A, 2-2B, 2-2C, 2-4A, 2-4B, 2-4D, 2-5A,**
14 **2-5B, 2-5C, 2-7, 2-8, 3-1A, 3-1B, 3-1C, 3-3A, 3-3D, 4-1, 4-2, 5-1, 5-2, 6-1A, 7-1,**
15 **7-2, 7-3, 7-3A, 8-1, 8-2A, 8-2B, 8-3A, 9-1A, 9-1C, 9-2, 9-3A, 9-4A, 9-5C, 9-6A,**
16 **9-6B, 10-2B, 10-2C, 10-3A, 10-3D, 10-4, 10-5C, 11-1 and 11-2A of Avoyelles**
17 **Parish; Evangeline Parish; Precincts 1-5, 1-19, 1-24, 5-1, 5-2, 5-4, 5-5, 5-6 (Part)**
18 **that portion north of State Highway 103 and west of Interstate Highway 49, 5-8,**
19 **6-2, 6-5, 6-6, 6-7, 6-8, 6-9, 6-11, 6-13, 6-14 and 6-16A of St. Landry Parish.**

20 **(29) District 29 is composed of Precincts 1-1, 1-2, 1-3, 2-1, 2-2, 3-1, 7-1,**
21 **7-2, 7-3 and 7-4 of Bienville Parish; Precincts 2-2, 3-1, 3-2, 3-3, 4-2 and 8-1 of**
22 **Grant Parish; Precincts 16, 17, 17A, 18, 19, 19A, 19B, 20, 20A and 25 of Jackson**
23 **Parish; Precincts 1-1, 1-2, 1-3, 2-1, 2-2, 3-1, 9-1, 10-1, 10-3, 10-5, 11-1, 11-3 and**
24 **12-1 of Lincoln Parish; Precincts 1-2, 1-3, 1-4, 1-4B, 1-5, 1-5A, 1-8 and 1-13 of**
25 **Natchitoches Parish; Precincts C1, C2, C3, C4, C5, C6, C7, C8, C9, C10, C11,**
26 **C13, C14, C15, C17, C18, C19, C20, C21, C22, C24, C25, C28, C38, C39, C40,**
27 **N1, N2, N3, N4, N5, N6, N8, N9, N11, N15, N19, N20, N21, S4, S14, S20 and S21**
28 **of Rapides Parish and Precincts 1-1, 1-4, 1-5, 2-1, 2-3, 3-1B, 5-1, 5-3, 6-1, 7-1,**
29 **7-1A, 7-2A and 7-5 of Winn Parish.**

1 **(30) District 30 is composed of Beauregard Parish; Precincts 160E,**
2 **160W, 161, 460E, 460W, 465, 469, 560, 561, 562, 600, 601, 602, 603, 660, 661,**
3 **662, 663, 664, 700, 701, 702, 703, 760, 761 and 762 of Calcasieu Parish and**
4 **Vernon Parish.**

5 **(31) District 31 is composed of Precincts 1-1, 1-2, 1-3 and 2-1 of Grant**
6 **Parish; Precincts 1-1, 1-1A, 1-3A, 1-4A, 1-6, 1-7, 1-9, 1-9A, 1-10, 1-10A, 1-10B,**
7 **1-11, 1-12, 1-14, 2-1, 2-2, 2-3, 2-4, 2-5, 2-6, 2-7, 2-7A, 2-8, 2-9, 3-1, 3-2, 3-3, 3-4,**
8 **3-5, 3-6, 3-7, 3-8, 3-9, 3-10, 4-1, 4-2, 4-3, 4-4, 4-5, 4-6, 4-7, 4-8 and 4-9 of**
9 **Natchitoches Parish; Precincts C23, C26, C27, C30, C31, C32, C33, C34, C35,**
10 **C36, C37, C41, C42, S1, S2, S5, S6, S7, S8, S9, S10, S11, S13, S15, S17, S18, S19,**
11 **S22, S23, S24, S25, S26, S27, S28 and S29 of Rapides Parish; Red River Parish;**
12 **Sabine Parish and Precincts 1-3, 2-2, 3-1, 3-1A, 3-1C, 3-2, 3-2A, 3-3, 4-1, 4-2,**
13 **4-2A, 4-3, 4-4, 4-5 and 6-1A of Winn Parish.**

14 **(32) District 32 is composed of Precincts 1-1, 1-2, 2-2A, 2-3A and 6-2A**
15 **of Avoyelles Parish; Caldwell Parish; Catahoula Parish; Precincts 1-3 (Part)**
16 **that portion northwest of US Highway 65; 3-1, 3-2, 3-3, 4-1, 4-2, 4-3, 4-4, 4-6,**
17 **5-2, 5-3, 5-4, 5-5, 5-6 and 5-7 of Concordia Parish; Franklin Parish; La Salle**
18 **Parish; Precincts 25, 26, 57 and 58 of Ouachita Parish; Precincts N10, N22, N23,**
19 **N24, N25, N26, N27, N28, N29 and S16 of Rapides Parish; Precinct 1 of**
20 **Richland Parish and Precincts 1-1, 2-1, 3-2, 3-3, 4-1, 4-2, 4-3, 5-1, 5-2, 5-3, 6-1,**
21 **6-2, 6-3, 7-1 and 7-4 of West Feliciana Parish.**

22 **(33) District 33 is composed of Precincts 1, 8, 10, 11, 21, 22, 31, 34, 35,**
23 **36, 37, 81, 84, 85, 87, 88, 91, 92, 93, 94 and 96 of Claiborne Parish; Precincts 4-1,**
24 **4-2, 4-3, 4-4, 4-5 and 5-2 of Lincoln Parish; Precincts 2, 3, 4, 6, 13, 20, 21, 22, 23,**
25 **24, 25, 26, 27, 28, 29, 30, 31, 34, 35, 39, 40, 41, 42, 43, 44, 45, 47, 48, 49, 50, 51, 53**
26 **and 54 of Morehouse Parish; Precincts 1, 2, 3, 4, 5, 6, 7, 8, 9, 35, 36, 37, 41, 43,**
27 **44, 44A, 49, 50 and 76 of Ouachita Parish; Union Parish and West Carroll**
28 **Parish.**

29 **(34) District 34 is composed of Precincts 1-1, 1-2, 1-3 (Part) that portion**

1 southeast of US Highway 65, 1-4, 2-1, 2-4 and 5-1 of Concordia Parish; East
 2 Carroll Parish; Madison Parish; Precincts 1, 5, 7, 8, 9, 10, 12, 14, 15, 16, 17, 18,
 3 33, 36, 37, 38, 52 and 55 of Morehouse Parish; Precincts 9A, 10, 11, 12, 13, 14,
 4 15, 16, 17, 18, 19, 20, 21, 22, 23, 24, 27, 28, 29, 30, 60, 63, 65, 66, 67, 68, 69, 70, 72,
 5 73, 74 and 79 of Ouachita Parish; Precincts 2, 3, 4, 5, 6, 7, 8, 9, 10, 11, 12, 13, 14,
 6 15, 16, 17, 18, 19, 20, 21, 22, 23, 24, 25, 26, 27, 28, 29, 30, 31, 32, 33, 34 and 35 of
 7 Richland Parish and Tensas Parish.

8 (35) District 35 is composed of Precincts 2-3, 4-1, 5-1, 5-2, 6-1, 6-2, 6-3,
 9 7-1, 7-2, 7-3, 7-4, 8-2 and 8-3 of Grant Parish; Precincts 1, 2, 3, 4, 5, 5A, 6, 7, 8,
 10 8A, 9, 10, 11, 13, 14A, 15, 22, 24 and 26A of Jackson Parish; Precincts 3-2, 3-3,
 11 3-4, 3-5, 5-1, 5-3, 5-4, 6-1, 6-2, 6-3, 6-4, 6-5, 7-1, 7-2, 8-1, 8-2, 8-3, 9-2, 9-3, 10-2,
 12 10-4, 11-2 and 12-2 of Lincoln Parish; Precincts 31, 32, 33, 34, 38, 39, 40, 42, 45,
 13 46, 47, 48, 51, 52, 53, 54, 55, 56, 59, 61, 62, 64, 71, 75, 77 and 78 of Ouachita
 14 Parish; Precincts N7, N12, N13, N14, N16, N17 and N18 of Rapides Parish and
 15 Precincts 5-2, 5-4, 5-5, 6-3, 6-4, 6-5, 6-6, 7-2, 7-7 and 7-7A of Winn Parish.

16 (36) District 36 is composed of Precincts 2-3, 3-2, 3-3, 3-4, 3-5, 4-1, 4-2,
 17 4-4, 5-1, 5-2, 5-3, 5-4, 6-1, 6-2, 6-3 and 6-4 of Bienville Parish; Precincts 2-1,
 18 2-17A, 2-18A, 2-18B, 2-18C, 2-21A, 2-21B, 2-21C, 2-21D, 2-22A, 2-22B, 3-1, 3-2,
 19 3-3, 3-4, 4-1A, 4-2, 4-3A, 4-3B, 4-3C, 4-4A, 4-4B, 4-5A, 4-6, 4-7, 4-9, 4-11A,
 20 4-11B and 4-11C of Bossier Parish; Precincts 3, 5, 7, 41, 42 and 51 of Claiborne
 21 Parish and Webster Parish.

22 (37) District 37 is composed of Precincts 1-1, 1-2, 1-3, 1-3A, 1-4, 1-4A,
 23 1-5, 2-2, 2-3, 2-4, 2-5, 2-6, 2-7, 2-8, 2-9, 2-10, 2-11, 2-11A, 2-12A, 2-12B, 2-12C,
 24 2-13, 2-14, 2-15, 2-16, 2-16A, 2-17B, 2-19, 2-20, 2-23, 4-8A, 4-8B, 4-8C, 4-8D and
 25 4-10 of Bossier Parish and Precincts 6, 7, 8, 9, 10, 11, 12, 13, 14, 15, 16, 17, 20,
 26 21, 22, 24, 26, 27, 48, 49, 64, 76, 77, 99, 102, 104, 109 and 129 of Caddo Parish.

27 (38) District 38 is composed of Precincts 4, 56, 62, 63, 65, 66, 68, 72, 75,
 28 78, 79, 84, 85, 87, 88, 89, 90, 91, 92, 93, 94, 95, 97, 100, 101, 103, 105, 107, 108,
 29 110, 122, 123, 125, 126, 127, 128, 132, 133, 134 and 159 of Caddo Parish and De

1 **Soto Parish.**

2 **(39) District 39 is composed of Precincts 1, 2, 3, 5, 23, 25, 28, 29, 30, 31,**
3 **32, 34, 35, 36, 37, 38, 39, 40, 41, 42, 43, 44, 45, 46, 47, 50, 51, 52, 53, 54, 55, 57, 58,**
4 **59, 60, 61, 67, 69, 70, 71, 73, 74, 80, 81, 82, 83, 86, 98, 106, 130, 135, 136, 137, 138,**
5 **139, 140, 142, 143, 144, 145, 146, 149, 150, 151, 154, 155, 156, 157 and 158 of**
6 **Caddo Parish.**

7 **B. The precincts referenced in this Section are those precincts identified**
8 **as Voting Districts (VTDs) in the 2010 Census Redistricting TIGER/Line**
9 **Shapefiles for the State of Louisiana.**

10 **C. When a precinct referenced in this Section has been subdivided by**
11 **action of the parish governing authority on a nongeographic basis or subdivided**
12 **by action of the parish governing authority on a geographic basis in accordance**
13 **with the provisions of R.S. 18:532.1, the enumeration in this Section of the**
14 **general precinct designation shall include all nongeographic and all geographic**
15 **subdivisions thereof, however such subdivisions may be designated. The**
16 **territorial limits of the districts as provided in this Section shall continue in**
17 **effect without change regardless of any changes made to the precincts by the**
18 **parish governing authority.**

19 Section 2.(A) The provisions of Section 1 of this Act shall be effective for the limited
20 purposes of qualifying candidates for and electing members to the Senate of the Legislature
21 of Louisiana at the next regularly scheduled election for members of the Senate in 2011,
22 commencing on the date and at the time that the qualifying period opens for such offices.
23 The effectiveness of Section 1 of this Act for such qualification and election shall not reduce
24 the term of office of any member of the Senate nor change any Senate district as established
25 in R.S. 24:35.1 until such provisions of law are repealed pursuant to Section 4 of this Act.

26 (B) Except as provided in Subsection A of this Section, the provisions of Section 1
27 of this Act shall be effective at 10:00 a.m. on January 9, 2012.

28 Section 3. A vacancy in the office of a member elected to serve a term of office
29 commencing at 10:00 a.m. on January 9, 2012, shall be filled, as required by law from the

1 district created by Section 1 of this Act from which the member was elected.

2 Section 4. R.S. 24:35.1 is hereby repealed, effective at 10:00 a.m., January 9, 2012.

3 Section 5. The provisions of this Section and Sections 2 and 3 of this Act shall
4 become effective upon signature by the governor or, if not signed by the governor, upon
5 expiration of the time for bills to become law without signature by the governor, as provided
6 by Article III, Section 18 of the Constitution of Louisiana. If vetoed by the governor and
7 subsequently approved by the legislature, this Act shall become effective on the day
8 following such approval.

The original instrument and the following digest, which constitutes no part
of the legislative instrument, were prepared by Yolanda Dixon.

DIGEST

Chaisson (SB 170)

Proposed law redistricts the thirty-nine present La. Senate districts.

Effective upon signature of the governor or lapse of time for gubernatorial action.

(Adds R.S. 24:35; repeals R.S. 24:35.1)

Plan Statistics

| <u>Districts:</u> | <u># of Members</u> | <u>Actual Population</u> | <u>Ideal Population</u> | <u>Absolute Deviation</u> | <u>Relative Deviation</u> |
|-------------------|---------------------|--------------------------|-------------------------|---------------------------|---------------------------|
| District 1 | 1 | 119,653 | 116,240 | 3,413 | 2.936% |
| District 2 | 1 | 111,274 | 116,240 | -4,966 | -4.272% |
| District 3 | 1 | 110,993 | 116,240 | -5,247 | -4.514% |
| District 4 | 1 | 110,743 | 116,240 | -5,497 | -4.729% |
| District 5 | 1 | 110,517 | 116,240 | -5,723 | -4.923% |
| District 6 | 1 | 120,032 | 116,240 | 3,792 | 3.262% |
| District 7 | 1 | 110,828 | 116,240 | -5,412 | -4.656% |
| District 8 | 1 | 119,917 | 116,240 | 3,677 | 3.163% |
| District 9 | 1 | 118,074 | 116,240 | 1,834 | 1.578% |
| District 10 | 1 | 118,865 | 116,240 | 2,625 | 2.258% |
| District 11 | 1 | 121,670 | 116,240 | 5,430 | 4.671% |
| District 12 | 1 | 121,321 | 116,240 | 5,081 | 4.371% |
| District 13 | 1 | 118,958 | 116,240 | 2,718 | 2.338% |
| District 14 | 1 | 115,785 | 116,240 | -455 | -0.391% |
| District 15 | 1 | 119,974 | 116,240 | 3,734 | 3.212% |
| District 16 | 1 | 118,106 | 116,240 | 1,866 | 1.605% |
| District 17 | 1 | 111,041 | 116,240 | -5,199 | -4.473% |
| District 18 | 1 | 115,438 | 116,240 | -802 | -0.690% |
| District 19 | 1 | 111,296 | 116,240 | -4,944 | -4.253% |
| District 20 | 1 | 116,242 | 116,240 | 2 | 0.002% |
| District 21 | 1 | 121,985 | 116,240 | 5,745 | 4.942% |
| District 22 | 1 | 121,775 | 116,240 | 5,535 | 4.762% |
| District 23 | 1 | 120,896 | 116,240 | 4,656 | 4.006% |
| District 24 | 1 | 121,168 | 116,240 | 4,928 | 4.240% |
| District 25 | 1 | 120,244 | 116,240 | 4,004 | 3.445% |
| District 26 | 1 | 121,256 | 116,240 | 5,016 | 4.315% |
| District 27 | 1 | 118,161 | 116,240 | 1,921 | 1.653% |
| District 28 | 1 | 119,732 | 116,240 | 3,492 | 3.004% |
| District 29 | 1 | 118,159 | 116,240 | 1,919 | 1.651% |
| District 30 | 1 | 113,853 | 116,240 | -2,387 | -2.054% |
| District 31 | 1 | 110,877 | 116,240 | -5,363 | -4.614% |
| District 32 | 1 | 112,248 | 116,240 | -3,992 | -3.434% |
| District 33 | 1 | 113,411 | 116,240 | -2,829 | -2.434% |
| District 34 | 1 | 114,714 | 116,240 | -1,526 | -1.313% |
| District 35 | 1 | 112,602 | 116,240 | -3,638 | -3.130% |
| District 36 | 1 | 111,024 | 116,240 | -5,216 | -4.487% |
| District 37 | 1 | 110,770 | 116,240 | -5,470 | -4.706% |
| District 38 | 1 | 111,806 | 116,240 | -4,434 | -3.815% |
| District 39 | 1 | 117,964 | 116,240 | 1,724 | 1.483% |

| | | | |
|---------------------|-----------|------------------|------------------|
| Grand Total: | 39 | 4,533,372 | 4,533,360 |
|---------------------|-----------|------------------|------------------|

| | | | |
|------------------------------------|---------|----|---------|
| Ideal Population Per Member: | 116240 | | |
| Number of Districts for Plan Type: | 39 | | |
| Range of District Populations: | 110,517 | to | 121,985 |
| Absolute Mean Deviation: | 294 | | |
| Absolute Range: | -5,723 | to | 5,745 |
| Absolute Overall Range: | 11,468 | | |
| Relative Mean Deviation: | 3.23% | | |
| Relative Range: | -4.92% | to | 4.94% |
| Relative Overall Range: | 9.86% | | |

| | |
|--------------------------------------|------------|
| <i>Ideal - Actual:</i> | -12 |
| <i>Remainder:</i> | 12 |
| <i>Unassigned Population:</i> | 0 |

Total Population

| | Total Population | Total White | Total Black | Total Asian | Total American Indian | Total Other | Total Hispanic | Reg Total Jan 2011 |
|-------------|---------------------|----------------|----------------|----------------|-----------------------------|----------------|-------------------|-----------------------|
| District 1 | 119,653 | 91,866 | 21,624 | 2,329 | 1,332 | 2,502 | 6,499 | 71,323 |
| | 100.000% | 76.777% | 18.072% | 1.946% | 1.113% | 2.091% | 5.432% | 79.744% |
| District 2 | 111,274 | 46,382 | 62,848 | 498 | 452 | 1,094 | 2,617 | 67,895 |
| | 100.000% | 41.683% | 56.480% | 0.448% | 0.406% | 0.983% | 2.352% | 81.408% |
| District 3 | 110,993 | 34,531 | 65,868 | 7,031 | 873 | 2,690 | 5,963 | 70,161 |
| | 100.000% | 31.111% | 59.344% | 6.335% | 0.787% | 2.424% | 5.372% | 83.411% |
| District 4 | 110,743 | 34,331 | 72,402 | 1,476 | 441 | 2,093 | 5,054 | 68,626 |
| | 100.000% | 31.001% | 65.378% | 1.333% | 0.398% | 1.890% | 4.564% | 80.121% |
| District 5 | 110,517 | 45,044 | 59,649 | 2,366 | 626 | 2,832 | 7,323 | 68,736 |
| | 100.000% | 40.758% | 53.973% | 2.141% | 0.566% | 2.563% | 6.626% | 74.921% |
| District 6 | 120,032 | 83,460 | 31,479 | 2,268 | 752 | 2,073 | 4,677 | 72,879 |
| | 100.000% | 69.531% | 26.226% | 1.889% | 0.626% | 1.727% | 3.896% | 80.321% |
| District 7 | 110,828 | 39,343 | 62,132 | 3,939 | 782 | 4,632 | 10,167 | 59,726 |
| | 100.000% | 35.499% | 56.062% | 3.554% | 0.706% | 4.179% | 9.174% | 73.394% |
| District 8 | 119,917 | 68,420 | 38,444 | 6,971 | 1,631 | 4,451 | 10,732 | 72,010 |
| | 100.000% | 57.056% | 32.059% | 5.813% | 1.360% | 3.712% | 8.950% | 80.498% |
| District 9 | 118,074 | 95,540 | 12,226 | 4,462 | 686 | 5,160 | 13,706 | 71,342 |
| | 100.000% | 80.915% | 10.355% | 3.779% | 0.581% | 4.370% | 11.608% | 74.009% |
| District 10 | 118,865 | 93,693 | 13,390 | 4,590 | 767 | 6,425 | 18,592 | 70,357 |
| | 100.000% | 78.823% | 11.265% | 3.862% | 0.645% | 5.405% | 15.641% | 74.629% |
| District 11 | 121,670 | 106,436 | 10,691 | 1,760 | 1,046 | 1,737 | 5,460 | 76,697 |
| | 100.000% | 87.479% | 8.787% | 1.447% | 0.860% | 1.428% | 4.488% | 85.872% |
| District 12 | 121,321 | 83,996 | 34,634 | 613 | 873 | 1,205 | 3,236 | 69,612 |
| | 100.000% | 69.235% | 28.547% | 0.505% | 0.720% | 0.993% | 2.667% | 76.329% |
| District 13 | 118,958 | 109,766 | 5,973 | 864 | 953 | 1,402 | 3,560 | 67,456 |
| | 100.000% | 92.273% | 5.021% | 0.726% | 0.801% | 1.179% | 2.993% | 78.376% |
| District 14 | 115,785 | 33,912 | 75,627 | 4,112 | 424 | 1,710 | 3,981 | 59,935 |
| | 100.000% | 29.289% | 65.317% | 3.551% | 0.366% | 1.477% | 3.438% | 67.300% |
| District 15 | 119,974 | 26,522 | 87,971 | 2,787 | 433 | 2,261 | 4,288 | 65,246 |
| | 100.000% | 22.106% | 73.325% | 2.323% | 0.361% | 1.885% | 3.574% | 75.365% |
| District 16 | 118,106 | 89,139 | 21,736 | 4,739 | 504 | 1,988 | 5,231 | 71,600 |
| | 100.000% | 75.474% | 18.404% | 4.012% | 0.427% | 1.683% | 4.429% | 74.714% |
| District 17 | 111,041 | 68,952 | 40,232 | 426 | 612 | 819 | 1,970 | 74,065 |
| | 100.000% | 62.096% | 36.232% | 0.384% | 0.551% | 0.738% | 1.774% | 87.676% |
| District 18 | 115,438 | 96,375 | 14,794 | 1,328 | 723 | 2,218 | 4,860 | 67,986 |
| | 100.000% | 83.486% | 12.816% | 1.150% | 0.626% | 1.921% | 4.210% | 82.088% |
| District 19 | 111,296 | 66,721 | 39,098 | 1,085 | 887 | 3,505 | 7,845 | 64,896 |
| | 100.000% | 59.949% | 35.130% | 0.975% | 0.797% | 3.149% | 7.049% | 79.444% |
| District 20 | 116,242 | 86,314 | 16,209 | 1,219 | 9,015 | 3,485 | 5,524 | 60,955 |
| | 100.000% | 74.254% | 13.944% | 1.049% | 7.755% | 2.998% | 4.752% | 70.502% |
| District 21 | 121,985 | 81,700 | 33,232 | 1,854 | 2,718 | 2,481 | 4,854 | 70,508 |
| | 100.000% | 66.975% | 27.243% | 1.520% | 2.228% | 2.034% | 3.979% | 77.811% |
| District 22 | 121,775 | 83,111 | 33,720 | 2,383 | 770 | 1,791 | 3,230 | 77,122 |
| | 100.000% | 68.250% | 27.690% | 1.957% | 0.632% | 1.471% | 2.652% | 86.292% |
| District 23 | 120,896 | 100,058 | 14,929 | 3,137 | 765 | 2,007 | 4,750 | 72,241 |
| | 100.000% | 82.764% | 12.349% | 2.595% | 0.633% | 1.660% | 3.929% | 76.941% |
| District 24 | 121,168 | 49,875 | 68,581 | 639 | 590 | 1,483 | 2,688 | 78,096 |
| | 100.000% | 41.162% | 56.600% | 0.527% | 0.487% | 1.224% | 2.218% | 88.746% |
| District 25 | 120,244 | 98,518 | 18,230 | 1,427 | 918 | 1,151 | 2,448 | 74,571 |
| | 100.000% | 81.932% | 15.161% | 1.187% | 0.763% | 0.957% | 2.036% | 83.910% |
| District 26 | 121,256 | 94,618 | 22,371 | 1,715 | 704 | 1,848 | 3,889 | 70,537 |
| | 100.000% | 78.032% | 18.449% | 1.414% | 0.581% | 1.524% | 3.207% | 79.560% |
| District 27 | 118,161 | 73,635 | 40,862 | 1,261 | 899 | 1,504 | 3,189 | 72,724 |
| | 100.000% | 62.318% | 34.582% | 1.067% | 0.761% | 1.273% | 2.699% | 82.470% |
| District 28 | 119,732 | 83,062 | 33,396 | 629 | 1,621 | 1,024 | 2,178 | 69,260 |
| | 100.000% | 69.373% | 27.892% | 0.525% | 1.354% | 0.855% | 1.819% | 77.354% |
| District 29 | 118,159 | 45,498 | 69,302 | 1,267 | 931 | 1,161 | 2,311 | 65,979 |
| | 100.000% | 38.506% | 58.651% | 1.072% | 0.788% | 0.983% | 1.956% | 75.114% |
| District 30 | 113,853 | 91,826 | 15,711 | 1,869 | 2,154 | 2,293 | 5,275 | 57,015 |
| | 100.000% | 80.653% | 13.799% | 1.642% | 1.892% | 2.014% | 4.633% | 68.464% |
| District 31 | 110,877 | 80,380 | 23,934 | 1,154 | 4,103 | 1,306 | 3,149 | 66,623 |
| | 100.000% | 72.495% | 21.586% | 1.041% | 3.700% | 1.178% | 2.840% | 78.502% |
| District 32 | 112,248 | 84,760 | 25,718 | 402 | 828 | 540 | 1,585 | 66,512 |
| | 100.000% | 75.511% | 22.912% | 0.358% | 0.738% | 0.481% | 1.412% | 77.627% |
| District 33 | 113,411 | 78,810 | 31,914 | 912 | 552 | 1,223 | 2,359 | 70,788 |
| | 100.000% | 69.491% | 28.140% | 0.804% | 0.487% | 1.078% | 2.080% | 81.983% |
| District 34 | 114,714 | 35,623 | 77,431 | 630 | 410 | 620 | 1,555 | 71,016 |
| | 100.000% | 31.054% | 67.499% | 0.549% | 0.357% | 0.540% | 1.356% | 85.073% |
| District 35 | 112,602 | 94,652 | 14,513 | 1,398 | 974 | 1,065 | 3,153 | 65,871 |
| | 100.000% | 84.059% | 12.889% | 1.242% | 0.865% | 0.946% | 2.800% | 75.845% |

Total Population

| | Total Population | Total White | Total Black | Total Asian | Total American Indian | Total Other | Total Hispanic | Reg Total Jan 2011 |
|-------------|---------------------|----------------|----------------|----------------|-----------------------------|----------------|-------------------|-----------------------|
| District 36 | 111,024 | 81,146 | 26,831 | 1,017 | 1,006 | 1,024 | 2,865 | 64,725 |
| | 100.000% | 73.089% | 24.167% | 0.916% | 0.906% | 0.922% | 2.581% | 77.496% |
| District 37 | 110,770 | 76,100 | 27,315 | 2,996 | 999 | 3,360 | 6,896 | 59,440 |
| | 100.000% | 68.701% | 24.659% | 2.705% | 0.902% | 3.033% | 6.226% | 69.997% |
| District 38 | 111,806 | 67,927 | 40,025 | 1,504 | 1,129 | 1,221 | 3,048 | 67,536 |
| | 100.000% | 60.754% | 35.799% | 1.345% | 1.010% | 1.092% | 2.726% | 79.455% |
| District 39 | 117,964 | 34,150 | 81,843 | 494 | 670 | 807 | 1,853 | 68,308 |
| | 100.000% | 28.950% | 69.380% | 0.419% | 0.568% | 0.684% | 1.571% | 79.083% |
| Grand Total | 4,533,372 | 2,836,192 | 1,486,885 | 81,551 | 46,553 | 82,191 | 192,560 | 2,680,375 |
| | 100.000% | 62.563% | 32.799% | 1.799% | 1.027% | 1.813% | 4.248% | 78.480% |

Voter Registration

| | Reg Total Jan 2011 | Reg White Jan 2011 | Reg Black Jan 2011 | Reg Other Jan 2011 | Reg Dem Total Jan 2011 | Reg Rep Total Jan 2011 | Reg Other Total Jan 2011 |
|-------------|-----------------------|-----------------------|-----------------------|-----------------------|------------------------------|------------------------------|--------------------------------|
| District 1 | 71,323 | 56,686 | 10,275 | 4,362 | 26,598 | 25,317 | 19,408 |
| | 79.744% | 79.478% | 14.406% | 6.116% | 37.292% | 35.496% | 27.211% |
| District 2 | 67,895 | 29,199 | 37,559 | 1,137 | 48,176 | 8,433 | 11,286 |
| | 81.408% | 43.006% | 55.319% | 1.675% | 70.957% | 12.421% | 16.623% |
| District 3 | 70,161 | 22,933 | 41,679 | 5,549 | 47,060 | 7,127 | 15,975 |
| | 83.411% | 32.686% | 59.405% | 7.909% | 67.074% | 10.158% | 22.769% |
| District 4 | 68,626 | 21,739 | 43,064 | 3,823 | 46,682 | 7,998 | 13,946 |
| | 80.121% | 31.677% | 62.752% | 5.571% | 68.024% | 11.654% | 20.322% |
| District 5 | 68,736 | 26,838 | 36,598 | 5,300 | 43,767 | 7,913 | 17,056 |
| | 74.921% | 39.045% | 53.244% | 7.711% | 63.674% | 11.512% | 24.814% |
| District 6 | 72,879 | 55,424 | 14,833 | 2,622 | 30,023 | 25,619 | 17,237 |
| | 80.321% | 76.049% | 20.353% | 3.598% | 41.196% | 35.153% | 23.652% |
| District 7 | 59,726 | 23,286 | 31,424 | 5,016 | 35,390 | 10,126 | 14,210 |
| | 73.394% | 38.988% | 52.614% | 8.398% | 59.254% | 16.954% | 23.792% |
| District 8 | 72,010 | 43,637 | 21,320 | 7,053 | 36,440 | 15,848 | 19,721 |
| | 80.498% | 60.599% | 29.607% | 9.794% | 50.604% | 22.008% | 27.386% |
| District 9 | 71,342 | 61,804 | 4,219 | 5,319 | 24,779 | 29,536 | 17,027 |
| | 74.009% | 86.631% | 5.914% | 7.456% | 34.733% | 41.401% | 23.867% |
| District 10 | 70,357 | 58,067 | 4,973 | 7,317 | 23,655 | 28,974 | 17,728 |
| | 74.629% | 82.532% | 7.068% | 10.400% | 33.621% | 41.181% | 25.197% |
| District 11 | 76,697 | 67,686 | 4,921 | 4,090 | 19,653 | 37,817 | 19,227 |
| | 85.872% | 88.251% | 6.416% | 5.333% | 25.624% | 49.307% | 25.069% |
| District 12 | 69,612 | 50,528 | 17,270 | 1,814 | 35,885 | 18,797 | 14,930 |
| | 76.329% | 72.585% | 24.809% | 2.606% | 51.550% | 27.003% | 21.447% |
| District 13 | 67,456 | 63,174 | 2,306 | 1,976 | 23,169 | 26,324 | 17,963 |
| | 78.376% | 93.652% | 3.419% | 2.929% | 34.347% | 39.024% | 26.629% |
| District 14 | 59,935 | 15,455 | 41,867 | 2,613 | 39,130 | 8,249 | 12,556 |
| | 67.300% | 25.786% | 69.854% | 4.360% | 65.287% | 13.763% | 20.949% |
| District 15 | 65,246 | 17,838 | 45,101 | 2,307 | 45,265 | 8,335 | 11,646 |
| | 75.365% | 27.340% | 69.125% | 3.536% | 69.376% | 12.775% | 17.849% |
| District 16 | 71,600 | 59,313 | 8,545 | 3,742 | 23,763 | 31,437 | 16,400 |
| | 74.714% | 82.839% | 11.934% | 5.226% | 33.189% | 43.906% | 22.905% |
| District 17 | 74,065 | 46,992 | 25,551 | 1,522 | 46,796 | 14,438 | 12,831 |
| | 87.676% | 63.447% | 34.498% | 2.055% | 63.182% | 19.494% | 17.324% |
| District 18 | 67,986 | 58,037 | 7,240 | 2,709 | 27,663 | 22,467 | 17,856 |
| | 82.088% | 85.366% | 10.649% | 3.985% | 40.689% | 33.047% | 26.264% |
| District 19 | 64,896 | 41,102 | 20,770 | 3,024 | 33,763 | 15,590 | 15,543 |
| | 79.444% | 63.335% | 32.005% | 4.660% | 52.026% | 24.023% | 23.951% |
| District 20 | 60,955 | 49,747 | 7,591 | 3,617 | 30,449 | 14,878 | 15,628 |
| | 70.502% | 81.613% | 12.453% | 5.934% | 49.953% | 24.408% | 25.639% |
| District 21 | 70,508 | 49,946 | 18,044 | 2,518 | 34,383 | 19,150 | 16,975 |
| | 77.811% | 70.837% | 25.591% | 3.571% | 48.765% | 27.160% | 24.075% |
| District 22 | 77,122 | 55,055 | 19,805 | 2,262 | 41,429 | 19,653 | 16,040 |
| | 86.292% | 71.387% | 25.680% | 2.933% | 53.719% | 25.483% | 20.798% |
| District 23 | 72,241 | 63,077 | 5,836 | 3,328 | 22,098 | 31,337 | 18,806 |
| | 76.941% | 87.315% | 8.079% | 4.607% | 30.589% | 43.378% | 26.032% |
| District 24 | 78,096 | 33,503 | 42,523 | 2,070 | 49,535 | 12,740 | 15,821 |
| | 88.746% | 42.900% | 54.450% | 2.651% | 63.428% | 16.313% | 20.258% |
| District 25 | 74,571 | 62,914 | 9,867 | 1,790 | 38,581 | 18,756 | 17,234 |
| | 83.910% | 84.368% | 13.232% | 2.400% | 51.737% | 25.152% | 23.111% |
| District 26 | 70,537 | 57,587 | 11,267 | 1,683 | 37,523 | 16,261 | 16,753 |
| | 79.560% | 81.641% | 15.973% | 2.386% | 53.196% | 23.053% | 23.751% |
| District 27 | 72,724 | 46,996 | 23,361 | 2,367 | 38,787 | 16,335 | 17,602 |
| | 82.470% | 64.622% | 32.123% | 3.255% | 53.335% | 22.462% | 24.204% |
| District 28 | 69,260 | 50,902 | 16,982 | 1,376 | 44,319 | 12,459 | 12,482 |
| | 77.354% | 73.494% | 24.519% | 1.987% | 63.989% | 17.989% | 18.022% |
| District 29 | 65,979 | 27,517 | 36,570 | 1,892 | 40,860 | 11,537 | 13,582 |
| | 75.114% | 41.706% | 55.427% | 2.868% | 61.929% | 17.486% | 20.585% |
| District 30 | 57,015 | 48,399 | 6,057 | 2,559 | 26,502 | 15,242 | 15,271 |
| | 68.464% | 84.888% | 10.624% | 4.488% | 46.483% | 26.733% | 26.784% |
| District 31 | 66,623 | 51,540 | 12,262 | 2,821 | 33,000 | 19,464 | 14,159 |
| | 78.502% | 77.361% | 18.405% | 4.234% | 49.532% | 29.215% | 21.252% |
| District 32 | 66,512 | 53,920 | 11,633 | 958 | 34,210 | 18,963 | 13,340 |
| | 77.627% | 81.068% | 17.490% | 1.440% | 51.434% | 28.511% | 20.057% |
| District 33 | 70,788 | 52,624 | 16,377 | 1,787 | 31,134 | 24,681 | 14,973 |
| | 81.983% | 74.340% | 23.135% | 2.524% | 43.982% | 34.866% | 21.152% |
| District 34 | 71,016 | 22,750 | 46,608 | 1,659 | 46,564 | 10,863 | 13,588 |
| | 85.073% | 32.035% | 65.630% | 2.336% | 65.568% | 15.297% | 19.134% |
| District 35 | 65,871 | 58,044 | 5,795 | 2,032 | 22,780 | 27,272 | 15,819 |
| | 75.845% | 88.118% | 8.797% | 3.085% | 34.583% | 41.402% | 24.015% |

Voter Registration

| | Reg Total Jan 2011 | Reg White Jan 2011 | Reg Black Jan 2011 | Reg Other Jan 2011 | Reg Dem Total Jan 2011 | Reg Rep Total Jan 2011 | Reg Other Total Jan 2011 |
|--------------------|-----------------------|-----------------------|-----------------------|-----------------------|------------------------------|------------------------------|--------------------------------|
| District 36 | 64,725 | 48,528 | 14,558 | 1,639 | 26,907 | 23,196 | 14,622 |
| | 77.496% | 74.976% | 22.492% | 2.532% | 41.571% | 35.838% | 22.591% |
| District 37 | 59,440 | 44,890 | 11,682 | 2,868 | 21,425 | 23,612 | 14,403 |
| | 69.997% | 75.522% | 19.653% | 4.825% | 36.045% | 39.724% | 24.231% |
| District 38 | 67,536 | 43,283 | 21,717 | 2,536 | 32,117 | 21,637 | 13,782 |
| | 79.455% | 64.089% | 32.156% | 3.755% | 47.555% | 32.038% | 20.407% |
| District 39 | 68,308 | 20,157 | 46,027 | 2,124 | 44,726 | 9,809 | 13,773 |
| | 79.083% | 29.509% | 67.382% | 3.109% | 65.477% | 14.360% | 20.163% |
| Grand Total | 2,680,375 | 1,761,117 | 804,077 | 115,181 | 1,354,986 | 718,190 | 607,199 |

Splits

| | Total Population | Total White | Total Black | Total Asian | Total American Indian | Total Other | VAP Total | VAP White | VAP Black | VAP Asian | VAP American Indian | VAP Other | Reg Total Jan 2011 | Reg White Jan 2011 | Reg Black Jan 2011 | Reg Other Jan 2011 |
|-----------------------|---------------------|----------------|----------------|----------------|-----------------------------|----------------|-----------|-----------|-----------|-----------|---------------------------|-----------|-----------------------|-----------------------|-----------------------|-----------------------|
| District 1 | | | | | | | | | | | | | | | | |
| *Orleans | 1,032 | 856 | 73 | 52 | 2 | 49 | 847 | 729 | 55 | 32 | 2 | 29 | 519 | 456 | 27 | 36 |
| *Plaquemines | 1,943 | 741 | 1,147 | 16 | 20 | 19 | 1,503 | 594 | 866 | 11 | 14 | 18 | 1,355 | 549 | 752 | 54 |
| *St. Bernard | 14,693 | 11,609 | 2,223 | 309 | 238 | 314 | 10,871 | 8,831 | 1,426 | 230 | 163 | 221 | 9,690 | 8,331 | 876 | 483 |
| *St. Tammany | 101,985 | 78,660 | 18,181 | 1,952 | 1,072 | 2,120 | 76,219 | 60,586 | 11,990 | 1,350 | 804 | 1,489 | 59,759 | 47,350 | 8,620 | 3,789 |
| District 1 | 119,653 | 91,866 | 21,624 | 2,329 | 1,332 | 2,502 | 89,440 | 70,740 | 14,337 | 1,623 | 983 | 1,757 | 71,323 | 56,686 | 10,275 | 4,362 |
| | 100.000% | 76.777% | 18.072% | 1.946% | 1.113% | 2.091% | 100.000% | 79.092% | 16.030% | 1.815% | 1.099% | 1.964% | 79.744% | 79.478% | 14.406% | 6.116% |
| District 2 | | | | | | | | | | | | | | | | |
| *Ascension | 19,400 | 6,125 | 12,719 | 106 | 63 | 387 | 14,024 | 4,926 | 8,720 | 83 | 47 | 248 | 11,807 | 3,926 | 7,583 | 298 |
| *Assumption | 12,397 | 5,549 | 6,659 | 22 | 47 | 120 | 9,254 | 4,387 | 4,729 | 16 | 28 | 94 | 8,059 | 3,679 | 4,346 | 34 |
| *Iberville | 10,438 | 4,061 | 6,266 | 33 | 20 | 58 | 8,734 | 3,564 | 5,087 | 25 | 18 | 40 | 4,853 | 1,900 | 2,866 | 87 |
| *Lafourche | 15,837 | 9,515 | 5,872 | 141 | 145 | 164 | 11,932 | 7,712 | 3,917 | 104 | 96 | 103 | 8,961 | 5,811 | 2,940 | 210 |
| *St. Charles | 1,302 | 152 | 1,148 | 1 | 1 | 0 | 1,044 | 151 | 891 | 1 | 1 | 0 | 563 | 19 | 536 | 8 |
| *St. James | 17,062 | 7,059 | 9,851 | 28 | 42 | 82 | 12,757 | 5,631 | 7,021 | 21 | 33 | 51 | 11,715 | 4,985 | 6,576 | 154 |
| *St. John the Baptist | 20,874 | 6,505 | 14,033 | 81 | 79 | 176 | 15,351 | 5,269 | 9,855 | 48 | 63 | 116 | 13,117 | 4,017 | 8,824 | 276 |
| *West Baton Rouge | 13,964 | 7,416 | 6,300 | 86 | 55 | 107 | 10,305 | 5,698 | 4,430 | 70 | 39 | 68 | 8,820 | 4,862 | 3,888 | 70 |
| District 2 | 111,274 | 46,382 | 62,848 | 498 | 452 | 1,094 | 83,401 | 37,338 | 44,650 | 368 | 325 | 720 | 67,895 | 29,199 | 37,559 | 1,137 |
| | 100.000% | 41.683% | 56.480% | 0.448% | 0.406% | 0.983% | 100.000% | 44.769% | 53.537% | 0.441% | 0.390% | 0.863% | 81.408% | 43.006% | 55.319% | 1.675% |
| District 3 | | | | | | | | | | | | | | | | |
| *Jefferson | 30,607 | 10,846 | 17,541 | 1,314 | 287 | 619 | 23,217 | 8,934 | 12,655 | 965 | 200 | 463 | 19,149 | 6,447 | 11,507 | 1,195 |
| *Orleans | 59,182 | 8,715 | 43,845 | 5,153 | 302 | 1,167 | 45,049 | 7,901 | 31,998 | 3,954 | 245 | 951 | 37,344 | 5,485 | 28,219 | 3,640 |
| *St. Bernard | 21,204 | 14,970 | 4,482 | 564 | 284 | 904 | 15,849 | 11,659 | 2,912 | 410 | 207 | 661 | 13,668 | 11,001 | 1,953 | 714 |
| District 3 | 110,993 | 34,531 | 65,868 | 7,031 | 873 | 2,690 | 84,115 | 28,494 | 47,565 | 5,329 | 652 | 2,075 | 70,161 | 22,933 | 41,679 | 5,549 |
| | 100.000% | 31.111% | 59.344% | 6.335% | 0.787% | 2.424% | 100.000% | 33.875% | 56.548% | 6.335% | 0.775% | 2.467% | 83.411% | 32.686% | 59.405% | 7.909% |
| District 4 | | | | | | | | | | | | | | | | |
| *Orleans | 110,743 | 34,331 | 72,402 | 1,476 | 441 | 2,093 | 85,653 | 29,808 | 52,531 | 1,229 | 374 | 1,711 | 68,626 | 21,739 | 43,064 | 3,823 |
| District 4 | 110,743 | 34,331 | 72,402 | 1,476 | 441 | 2,093 | 85,653 | 29,808 | 52,531 | 1,229 | 374 | 1,711 | 68,626 | 21,739 | 43,064 | 3,823 |
| | 100.000% | 31.001% | 65.378% | 1.333% | 0.398% | 1.890% | 100.000% | 34.801% | 61.330% | 1.435% | 0.437% | 1.998% | 80.121% | 31.677% | 62.752% | 5.571% |
| District 5 | | | | | | | | | | | | | | | | |
| *Jefferson | 1,524 | 262 | 1,218 | 23 | 0 | 21 | 1,215 | 231 | 950 | 17 | 0 | 17 | 1,137 | 156 | 909 | 72 |
| *Orleans | 108,993 | 44,782 | 58,431 | 2,343 | 626 | 2,811 | 90,530 | 40,467 | 45,033 | 2,080 | 538 | 2,412 | 67,599 | 26,682 | 35,689 | 5,228 |
| District 5 | 110,517 | 45,044 | 59,649 | 2,366 | 626 | 2,832 | 91,745 | 40,698 | 45,983 | 2,097 | 538 | 2,429 | 68,736 | 26,838 | 36,598 | 5,300 |
| | 100.000% | 40.758% | 53.973% | 2.141% | 0.566% | 2.563% | 100.000% | 44.360% | 50.120% | 2.286% | 0.586% | 2.648% | 74.921% | 39.045% | 53.244% | 7.711% |
| District 6 | | | | | | | | | | | | | | | | |
| *East Baton Rouge | 66,471 | 51,132 | 11,981 | 1,775 | 430 | 1,153 | 50,595 | 40,472 | 7,723 | 1,258 | 314 | 828 | 43,173 | 36,280 | 5,230 | 1,663 |
| *Livingston | 1,769 | 1,556 | 184 | 5 | 20 | 4 | 1,297 | 1,152 | 129 | 3 | 11 | 2 | 1,151 | 1,039 | 81 | 31 |

Splits

| | Total Population | Total White | Total Black | Total Asian | Total American Indian | Total Other | VAP Total | VAP White | VAP Black | VAP Asian | VAP American Indian | VAP Other | Reg Total Jan 2011 | Reg White Jan 2011 | Reg Black Jan 2011 | Reg Other Jan 2011 |
|--------------|------------------|-------------|-------------|-------------|-----------------------|-------------|-----------|-----------|-----------|-----------|---------------------|-----------|--------------------|--------------------|--------------------|--------------------|
| District 6 | | | | | | | | | | | | | | | | |
| *St. Helena | 3,970 | 1,500 | 2,410 | 4 | 27 | 29 | 2,912 | 1,177 | 1,692 | 4 | 22 | 17 | 2,844 | 1,068 | 1,736 | 40 |
| *Tangipahoa | 47,822 | 29,272 | 16,904 | 484 | 275 | 887 | 35,931 | 23,693 | 11,063 | 366 | 212 | 597 | 25,711 | 17,037 | 7,786 | 888 |
| District 6 | 120,032 | 83,460 | 31,479 | 2,268 | 752 | 2,073 | 90,735 | 66,494 | 20,607 | 1,631 | 559 | 1,444 | 72,879 | 55,424 | 14,833 | 2,622 |
| | 100.000% | 69.531% | 26.226% | 1.889% | 0.626% | 1.727% | 100.000% | 73.284% | 22.711% | 1.798% | 0.616% | 1.591% | 80.321% | 76.049% | 20.353% | 3.598% |
| District 7 | | | | | | | | | | | | | | | | |
| *Jefferson | 46,439 | 14,830 | 26,093 | 1,987 | 292 | 3,237 | 34,048 | 12,154 | 17,696 | 1,588 | 202 | 2,408 | 23,722 | 8,382 | 12,930 | 2,410 |
| *Orleans | 51,483 | 13,771 | 34,773 | 1,592 | 267 | 1,080 | 38,205 | 11,606 | 24,305 | 1,272 | 202 | 820 | 29,017 | 8,679 | 18,047 | 2,291 |
| *Plaquemines | 12,906 | 10,742 | 1,266 | 360 | 223 | 315 | 9,124 | 7,818 | 754 | 223 | 146 | 183 | 6,987 | 6,225 | 447 | 315 |
| District 7 | 110,828 | 39,343 | 62,132 | 3,939 | 782 | 4,632 | 81,377 | 31,578 | 42,755 | 3,083 | 550 | 3,411 | 59,726 | 23,286 | 31,424 | 5,016 |
| | 100.000% | 35.499% | 56.062% | 3.554% | 0.706% | 4.179% | 100.000% | 38.805% | 52.539% | 3.789% | 0.676% | 4.192% | 73.394% | 38.988% | 52.614% | 8.398% |
| District 8 | | | | | | | | | | | | | | | | |
| *Jefferson | 111,724 | 63,657 | 35,906 | 6,503 | 1,318 | 4,340 | 83,370 | 50,283 | 24,322 | 4,761 | 931 | 3,073 | 65,818 | 39,870 | 19,444 | 6,504 |
| *Plaquemines | 8,193 | 4,763 | 2,538 | 468 | 313 | 111 | 6,086 | 3,674 | 1,747 | 349 | 236 | 80 | 6,192 | 3,767 | 1,876 | 549 |
| District 8 | 119,917 | 68,420 | 38,444 | 6,971 | 1,631 | 4,451 | 89,456 | 53,957 | 26,069 | 5,110 | 1,167 | 3,153 | 72,010 | 43,637 | 21,320 | 7,053 |
| | 100.000% | 57.056% | 32.059% | 5.813% | 1.360% | 3.712% | 100.000% | 60.317% | 29.142% | 5.712% | 1.305% | 3.525% | 80.498% | 60.599% | 29.607% | 9.794% |
| District 9 | | | | | | | | | | | | | | | | |
| *Jefferson | 105,678 | 84,567 | 11,303 | 4,127 | 628 | 5,053 | 86,067 | 70,334 | 8,139 | 3,178 | 482 | 3,934 | 62,675 | 54,409 | 3,617 | 4,649 |
| *Orleans | 12,396 | 10,973 | 923 | 335 | 58 | 107 | 10,330 | 9,169 | 772 | 273 | 38 | 78 | 8,667 | 7,395 | 602 | 670 |
| District 9 | 118,074 | 95,540 | 12,226 | 4,462 | 686 | 5,160 | 96,397 | 79,503 | 8,911 | 3,451 | 520 | 4,012 | 71,342 | 61,804 | 4,219 | 5,319 |
| | 100.000% | 80.915% | 10.355% | 3.779% | 0.581% | 4.370% | 100.000% | 82.475% | 9.244% | 3.580% | 0.539% | 4.162% | 74.009% | 86.631% | 5.914% | 7.456% |
| District 10 | | | | | | | | | | | | | | | | |
| *Jefferson | 118,865 | 93,693 | 13,390 | 4,590 | 767 | 6,425 | 94,276 | 75,938 | 9,416 | 3,524 | 589 | 4,809 | 70,357 | 58,067 | 4,973 | 7,317 |
| District 10 | 118,865 | 93,693 | 13,390 | 4,590 | 767 | 6,425 | 94,276 | 75,938 | 9,416 | 3,524 | 589 | 4,809 | 70,357 | 58,067 | 4,973 | 7,317 |
| | 100.000% | 78.823% | 11.265% | 3.862% | 0.645% | 5.405% | 100.000% | 80.549% | 9.988% | 3.738% | 0.625% | 5.101% | 74.629% | 82.532% | 7.068% | 10.400% |
| District 11 | | | | | | | | | | | | | | | | |
| *St. Tammany | 106,651 | 93,602 | 8,900 | 1,687 | 911 | 1,551 | 78,082 | 69,447 | 5,832 | 1,108 | 632 | 1,063 | 67,947 | 59,905 | 4,238 | 3,804 |
| *Tangipahoa | 15,019 | 12,834 | 1,791 | 73 | 135 | 186 | 11,234 | 9,816 | 1,145 | 55 | 96 | 122 | 8,750 | 7,781 | 683 | 286 |
| District 11 | 121,670 | 106,436 | 10,691 | 1,760 | 1,046 | 1,737 | 89,316 | 79,263 | 6,977 | 1,163 | 728 | 1,185 | 76,697 | 67,686 | 4,921 | 4,090 |
| | 100.000% | 87.479% | 8.787% | 1.447% | 0.860% | 1.428% | 100.000% | 88.744% | 7.812% | 1.302% | 0.815% | 1.327% | 85.872% | 88.251% | 6.416% | 5.333% |
| District 12 | | | | | | | | | | | | | | | | |
| *St. Tammany | 25,104 | 23,102 | 1,368 | 168 | 199 | 267 | 19,303 | 17,931 | 930 | 112 | 143 | 187 | 15,908 | 14,596 | 637 | 675 |
| *Tangipahoa | 49,049 | 29,412 | 18,382 | 300 | 369 | 586 | 36,592 | 23,043 | 12,657 | 226 | 280 | 386 | 28,096 | 17,959 | 9,394 | 743 |
| Washington | 47,168 | 31,482 | 14,884 | 145 | 305 | 352 | 35,305 | 24,363 | 10,374 | 101 | 238 | 229 | 25,608 | 17,973 | 7,239 | 396 |
| District 12 | 121,321 | 83,996 | 34,634 | 613 | 873 | 1,205 | 91,200 | 65,337 | 23,961 | 439 | 661 | 802 | 69,612 | 50,528 | 17,270 | 1,814 |
| | 100.000% | 69.235% | 28.547% | 0.505% | 0.720% | 0.993% | 100.000% | 71.641% | 26.273% | 0.481% | 0.725% | 0.879% | 76.329% | 72.585% | 24.809% | 2.606% |
| District 13 | | | | | | | | | | | | | | | | |

Splits

| | Total Population | Total White | Total Black | Total Asian | Total American Indian | Total Other | VAP Total | VAP White | VAP Black | VAP Asian | VAP American Indian | VAP Other | Reg Total Jan 2011 | Reg White Jan 2011 | Reg Black Jan 2011 | Reg Other Jan 2011 |
|-------------------|---------------------|----------------|----------------|----------------|-----------------------------|----------------|-----------|-----------|-----------|-----------|---------------------------|-----------|-----------------------|-----------------------|-----------------------|-----------------------|
| District 13 | | | | | | | | | | | | | | | | |
| *East Baton Rouge | 6,077 | 5,405 | 520 | 50 | 53 | 49 | 4,489 | 4,068 | 316 | 32 | 38 | 35 | 3,621 | 3,370 | 159 | 92 |
| *Livingston | 103,674 | 95,673 | 5,149 | 716 | 845 | 1,291 | 74,658 | 69,497 | 3,290 | 443 | 616 | 812 | 57,728 | 54,002 | 2,021 | 1,705 |
| *Tangipahoa | 9,207 | 8,688 | 304 | 98 | 55 | 62 | 6,920 | 6,579 | 194 | 63 | 43 | 41 | 6,107 | 5,802 | 126 | 179 |
| District 13 | 118,958 | 109,766 | 5,973 | 864 | 953 | 1,402 | 86,067 | 80,144 | 3,800 | 538 | 697 | 888 | 67,456 | 63,174 | 2,306 | 1,976 |
| | 100.000% | 92.273% | 5.021% | 0.726% | 0.801% | 1.179% | 100.000% | 93.118% | 4.415% | 0.625% | 0.810% | 1.032% | 78.376% | 93.652% | 3.419% | 2.929% |
| District 14 | | | | | | | | | | | | | | | | |
| *East Baton Rouge | 115,785 | 33,912 | 75,627 | 4,112 | 424 | 1,710 | 89,056 | 29,898 | 53,956 | 3,442 | 356 | 1,404 | 59,935 | 15,455 | 41,867 | 2,613 |
| District 14 | 115,785 | 33,912 | 75,627 | 4,112 | 424 | 1,710 | 89,056 | 29,898 | 53,956 | 3,442 | 356 | 1,404 | 59,935 | 15,455 | 41,867 | 2,613 |
| | 100.000% | 29.289% | 65.317% | 3.551% | 0.366% | 1.477% | 100.000% | 33.572% | 60.587% | 3.865% | 0.400% | 1.577% | 67.300% | 25.786% | 69.854% | 4.360% |
| District 15 | | | | | | | | | | | | | | | | |
| *East Baton Rouge | 119,974 | 26,522 | 87,971 | 2,787 | 433 | 2,261 | 86,573 | 22,327 | 60,285 | 2,023 | 334 | 1,604 | 65,246 | 17,838 | 45,101 | 2,307 |
| District 15 | 119,974 | 26,522 | 87,971 | 2,787 | 433 | 2,261 | 86,573 | 22,327 | 60,285 | 2,023 | 334 | 1,604 | 65,246 | 17,838 | 45,101 | 2,307 |
| | 100.000% | 22.106% | 73.325% | 2.323% | 0.361% | 1.885% | 100.000% | 25.790% | 69.635% | 2.337% | 0.386% | 1.853% | 75.365% | 27.340% | 69.125% | 3.536% |
| District 16 | | | | | | | | | | | | | | | | |
| *East Baton Rouge | 118,106 | 89,139 | 21,736 | 4,739 | 504 | 1,988 | 95,832 | 74,590 | 15,726 | 3,649 | 402 | 1,465 | 71,600 | 59,313 | 8,545 | 3,742 |
| District 16 | 118,106 | 89,139 | 21,736 | 4,739 | 504 | 1,988 | 95,832 | 74,590 | 15,726 | 3,649 | 402 | 1,465 | 71,600 | 59,313 | 8,545 | 3,742 |
| | 100.000% | 75.474% | 18.404% | 4.012% | 0.427% | 1.683% | 100.000% | 77.834% | 16.410% | 3.808% | 0.419% | 1.529% | 74.714% | 82.839% | 11.934% | 5.226% |
| District 17 | | | | | | | | | | | | | | | | |
| *Assumption | 11,024 | 10,086 | 591 | 46 | 143 | 158 | 8,411 | 7,809 | 370 | 35 | 97 | 100 | 6,729 | 6,414 | 240 | 75 |
| *East Baton Rouge | 13,758 | 8,817 | 4,699 | 101 | 69 | 72 | 9,961 | 6,520 | 3,290 | 67 | 42 | 42 | 9,042 | 5,895 | 2,908 | 239 |
| East Feliciana | 20,267 | 10,783 | 9,250 | 67 | 127 | 40 | 16,075 | 8,775 | 7,123 | 58 | 94 | 25 | 13,411 | 7,629 | 5,126 | 656 |
| *Iberville | 22,949 | 12,219 | 10,354 | 91 | 97 | 188 | 17,151 | 9,690 | 7,171 | 60 | 80 | 150 | 15,599 | 8,514 | 6,888 | 197 |
| Pointe Coupee | 22,802 | 14,010 | 8,427 | 69 | 71 | 225 | 17,327 | 11,073 | 6,020 | 44 | 57 | 133 | 15,464 | 9,584 | 5,696 | 184 |
| *St. Helena | 7,233 | 3,534 | 3,604 | 12 | 45 | 38 | 5,528 | 2,859 | 2,599 | 7 | 38 | 25 | 5,588 | 2,748 | 2,781 | 59 |
| *St. Martin | 1,443 | 1,399 | 10 | 8 | 21 | 5 | 1,163 | 1,135 | 4 | 6 | 15 | 3 | 993 | 976 | 0 | 17 |
| *West Baton Rouge | 9,824 | 6,855 | 2,832 | 28 | 30 | 79 | 7,556 | 5,369 | 2,087 | 22 | 28 | 50 | 5,976 | 4,382 | 1,520 | 74 |
| *West Feliciana | 1,741 | 1,249 | 465 | 4 | 9 | 14 | 1,304 | 924 | 360 | 1 | 8 | 11 | 1,263 | 850 | 392 | 21 |
| District 17 | 111,041 | 68,952 | 40,232 | 426 | 612 | 819 | 84,476 | 54,154 | 29,024 | 300 | 459 | 539 | 74,065 | 46,992 | 25,551 | 1,522 |
| | 100.000% | 62.096% | 36.232% | 0.384% | 0.551% | 0.738% | 100.000% | 64.106% | 34.358% | 0.355% | 0.543% | 0.638% | 87.676% | 63.447% | 34.498% | 2.055% |
| District 18 | | | | | | | | | | | | | | | | |
| *Ascension | 87,815 | 72,447 | 11,747 | 1,128 | 523 | 1,970 | 62,436 | 52,411 | 7,691 | 733 | 365 | 1,236 | 52,297 | 44,306 | 5,673 | 2,318 |
| *Livingston | 22,583 | 20,372 | 1,608 | 185 | 190 | 228 | 16,741 | 15,206 | 1,116 | 119 | 155 | 145 | 12,701 | 11,467 | 883 | 351 |
| *St. James | 5,040 | 3,556 | 1,439 | 15 | 10 | 20 | 3,644 | 2,600 | 1,018 | 5 | 8 | 13 | 2,988 | 2,264 | 684 | 40 |
| District 18 | 115,438 | 96,375 | 14,794 | 1,328 | 723 | 2,218 | 82,821 | 70,217 | 9,825 | 857 | 528 | 1,394 | 67,986 | 58,037 | 7,240 | 2,709 |
| | 100.000% | 83.486% | 12.816% | 1.150% | 0.626% | 1.921% | 100.000% | 84.782% | 11.863% | 1.035% | 0.638% | 1.683% | 82.088% | 85.366% | 10.649% | 3.985% |
| District 19 | | | | | | | | | | | | | | | | |

Splits

| | Total Population | Total White | Total Black | Total Asian | Total American Indian | Total Other | VAP Total | VAP White | VAP Black | VAP Asian | VAP American Indian | VAP Other | Reg Total Jan 2011 | Reg White Jan 2011 | Reg Black Jan 2011 | Reg Other Jan 2011 |
|-----------------------|---------------------|----------------|----------------|----------------|-----------------------------|----------------|-----------|-----------|-----------|-----------|---------------------------|-----------|-----------------------|-----------------------|-----------------------|-----------------------|
| District 19 | | | | | | | | | | | | | | | | |
| *Jefferson | 17,715 | 4,260 | 11,548 | 99 | 110 | 1,698 | 12,962 | 3,399 | 8,124 | 77 | 85 | 1,277 | 9,219 | 1,796 | 6,753 | 670 |
| *Lafourche | 17,053 | 13,077 | 3,392 | 79 | 249 | 256 | 12,981 | 10,282 | 2,297 | 58 | 159 | 185 | 9,867 | 7,963 | 1,658 | 246 |
| *St. Charles | 51,478 | 36,388 | 13,247 | 574 | 370 | 899 | 37,528 | 27,294 | 8,977 | 356 | 262 | 639 | 31,142 | 22,894 | 6,918 | 1,330 |
| *St. John the Baptist | 25,050 | 12,996 | 10,911 | 333 | 158 | 652 | 18,217 | 10,139 | 7,272 | 242 | 101 | 463 | 14,668 | 8,449 | 5,441 | 778 |
| District 19 | 111,296 | 66,721 | 39,098 | 1,085 | 887 | 3,505 | 81,688 | 51,114 | 26,670 | 733 | 607 | 2,564 | 64,896 | 41,102 | 20,770 | 3,024 |
| | 100.000% | 59.949% | 35.130% | 0.975% | 0.797% | 3.149% | 100.000% | 62.572% | 32.649% | 0.897% | 0.743% | 3.139% | 79.444% | 63.335% | 32.005% | 4.660% |
| District 20 | | | | | | | | | | | | | | | | |
| *Lafourche | 48,130 | 40,663 | 2,347 | 499 | 2,925 | 1,696 | 36,024 | 31,090 | 1,542 | 346 | 1,836 | 1,210 | 25,142 | 23,435 | 784 | 923 |
| *Terrebonne | 68,112 | 45,651 | 13,862 | 720 | 6,090 | 1,789 | 50,435 | 35,467 | 9,215 | 534 | 3,936 | 1,283 | 35,813 | 26,312 | 6,807 | 2,694 |
| District 20 | 116,242 | 86,314 | 16,209 | 1,219 | 9,015 | 3,485 | 86,459 | 66,557 | 10,757 | 880 | 5,772 | 2,493 | 60,955 | 49,747 | 7,591 | 3,617 |
| | 100.000% | 74.254% | 13.944% | 1.049% | 7.755% | 2.998% | 100.000% | 76.981% | 12.442% | 1.018% | 6.676% | 2.883% | 70.502% | 81.613% | 12.453% | 5.934% |
| District 21 | | | | | | | | | | | | | | | | |
| *Iberia | 8,289 | 3,164 | 4,980 | 47 | 26 | 72 | 5,852 | 2,474 | 3,279 | 28 | 21 | 50 | 5,436 | 2,231 | 3,122 | 83 |
| *Lafourche | 15,298 | 13,190 | 1,752 | 136 | 138 | 82 | 11,715 | 10,278 | 1,189 | 104 | 96 | 48 | 9,741 | 8,618 | 934 | 189 |
| St. Mary | 54,650 | 32,406 | 18,290 | 1,058 | 1,269 | 1,627 | 40,746 | 25,191 | 12,797 | 773 | 837 | 1,148 | 31,845 | 20,072 | 10,527 | 1,246 |
| *Terrebonne | 43,748 | 32,940 | 8,210 | 613 | 1,285 | 700 | 32,302 | 25,154 | 5,432 | 452 | 789 | 475 | 23,486 | 19,025 | 3,461 | 1,000 |
| District 21 | 121,985 | 81,700 | 33,232 | 1,854 | 2,718 | 2,481 | 90,615 | 63,097 | 22,697 | 1,357 | 1,743 | 1,721 | 70,508 | 49,946 | 18,044 | 2,518 |
| | 100.000% | 66.975% | 27.243% | 1.520% | 2.228% | 2.034% | 100.000% | 69.632% | 25.048% | 1.498% | 1.924% | 1.899% | 77.811% | 70.837% | 25.591% | 3.571% |
| District 22 | | | | | | | | | | | | | | | | |
| *Iberia | 64,951 | 42,387 | 19,111 | 1,879 | 402 | 1,172 | 47,546 | 32,663 | 12,475 | 1,280 | 286 | 842 | 39,703 | 27,785 | 10,795 | 1,123 |
| *Lafayette | 3,476 | 2,383 | 972 | 30 | 23 | 68 | 2,569 | 1,821 | 658 | 21 | 16 | 53 | 2,144 | 1,500 | 573 | 71 |
| *St. Landry | 7,310 | 6,924 | 310 | 16 | 33 | 27 | 5,380 | 5,121 | 217 | 10 | 21 | 11 | 5,128 | 4,791 | 242 | 95 |
| *St. Martin | 46,038 | 31,417 | 13,327 | 458 | 312 | 524 | 33,878 | 23,976 | 9,032 | 304 | 202 | 364 | 30,147 | 20,979 | 8,195 | 973 |
| District 22 | 121,775 | 83,111 | 33,720 | 2,383 | 770 | 1,791 | 89,373 | 63,581 | 22,382 | 1,615 | 525 | 1,270 | 77,122 | 55,055 | 19,805 | 2,262 |
| | 100.000% | 68.250% | 27.690% | 1.957% | 0.632% | 1.471% | 100.000% | 71.141% | 25.043% | 1.807% | 0.587% | 1.421% | 86.292% | 71.387% | 25.680% | 2.933% |
| District 23 | | | | | | | | | | | | | | | | |
| *Lafayette | 120,896 | 100,058 | 14,929 | 3,137 | 765 | 2,007 | 93,891 | 78,795 | 10,733 | 2,362 | 561 | 1,440 | 72,241 | 63,077 | 5,836 | 3,328 |
| District 23 | 120,896 | 100,058 | 14,929 | 3,137 | 765 | 2,007 | 93,891 | 78,795 | 10,733 | 2,362 | 561 | 1,440 | 72,241 | 63,077 | 5,836 | 3,328 |
| | 100.000% | 82.764% | 12.349% | 2.595% | 0.633% | 1.660% | 100.000% | 83.922% | 11.431% | 2.516% | 0.598% | 1.534% | 76.941% | 87.315% | 8.079% | 4.607% |
| District 24 | | | | | | | | | | | | | | | | |
| *Lafayette | 62,458 | 25,004 | 35,897 | 362 | 324 | 871 | 45,579 | 20,117 | 24,351 | 253 | 236 | 622 | 37,853 | 15,901 | 20,648 | 1,304 |
| *St. Landry | 54,031 | 23,374 | 29,624 | 265 | 249 | 519 | 39,072 | 18,107 | 20,250 | 175 | 170 | 370 | 37,534 | 16,691 | 20,184 | 659 |
| *St. Martin | 4,679 | 1,497 | 3,060 | 12 | 17 | 93 | 3,348 | 1,209 | 2,054 | 6 | 10 | 69 | 2,709 | 911 | 1,691 | 107 |
| District 24 | 121,168 | 49,875 | 68,581 | 639 | 590 | 1,483 | 87,999 | 39,433 | 46,655 | 434 | 416 | 1,061 | 78,096 | 33,503 | 42,523 | 2,070 |
| | 100.000% | 41.162% | 56.600% | 0.527% | 0.487% | 1.224% | 100.000% | 44.811% | 53.018% | 0.493% | 0.473% | 1.206% | 88.746% | 42.900% | 54.450% | 2.651% |

Splits

| | Total Population | Total White | Total Black | Total Asian | Total American Indian | Total Other | VAP Total | VAP White | VAP Black | VAP Asian | VAP American Indian | VAP Other | Reg Total Jan 2011 | Reg White Jan 2011 | Reg Black Jan 2011 | Reg Other Jan 2011 |
|-----------------|---------------------|----------------|----------------|----------------|-----------------------------|----------------|-----------|-----------|-----------|-----------|---------------------------|-----------|-----------------------|-----------------------|-----------------------|-----------------------|
| District 25 | | | | | | | | | | | | | | | | |
| *Acadia | 33,069 | 26,859 | 5,678 | 120 | 181 | 231 | 24,013 | 19,879 | 3,768 | 82 | 122 | 162 | 20,049 | 16,624 | 3,191 | 234 |
| *Calcasieu | 48,742 | 39,988 | 6,581 | 1,199 | 402 | 572 | 36,478 | 30,692 | 4,290 | 836 | 293 | 367 | 29,649 | 25,210 | 3,356 | 1,083 |
| Cameron | 6,839 | 6,546 | 135 | 10 | 60 | 88 | 5,183 | 5,011 | 74 | 9 | 38 | 51 | 5,536 | 5,272 | 188 | 76 |
| Jefferson Davis | 31,594 | 25,125 | 5,836 | 98 | 275 | 260 | 23,196 | 18,871 | 3,891 | 66 | 180 | 188 | 19,337 | 15,808 | 3,132 | 397 |
| District 25 | 120,244 | 98,518 | 18,230 | 1,427 | 918 | 1,151 | 88,870 | 74,453 | 12,023 | 993 | 633 | 768 | 74,571 | 62,914 | 9,867 | 1,790 |
| | 100.000% | 81.932% | 15.161% | 1.187% | 0.763% | 0.957% | 100.000% | 83.777% | 13.529% | 1.117% | 0.712% | 0.864% | 83.910% | 84.368% | 13.232% | 2.400% |
| District 26 | | | | | | | | | | | | | | | | |
| *Acadia | 22,687 | 16,659 | 5,697 | 48 | 112 | 171 | 16,523 | 12,586 | 3,709 | 32 | 77 | 119 | 13,701 | 10,382 | 3,129 | 190 |
| *Lafayette | 34,748 | 26,261 | 7,114 | 362 | 178 | 833 | 25,276 | 19,833 | 4,461 | 248 | 138 | 596 | 18,886 | 15,154 | 3,098 | 634 |
| *St. Landry | 5,822 | 4,776 | 906 | 31 | 38 | 71 | 4,338 | 3,618 | 642 | 19 | 20 | 39 | 3,197 | 2,700 | 412 | 85 |
| Vermilion | 57,999 | 46,922 | 8,654 | 1,274 | 376 | 773 | 42,522 | 35,424 | 5,457 | 902 | 259 | 480 | 34,753 | 29,351 | 4,628 | 774 |
| District 26 | 121,256 | 94,618 | 22,371 | 1,715 | 704 | 1,848 | 88,659 | 71,461 | 14,269 | 1,201 | 494 | 1,234 | 70,537 | 57,587 | 11,267 | 1,683 |
| | 100.000% | 78.032% | 18.449% | 1.414% | 0.581% | 1.524% | 100.000% | 80.602% | 16.094% | 1.355% | 0.557% | 1.392% | 79.560% | 81.641% | 15.973% | 2.386% |
| District 27 | | | | | | | | | | | | | | | | |
| *Calcasieu | 118,161 | 73,635 | 40,862 | 1,261 | 899 | 1,504 | 88,182 | 57,239 | 28,285 | 943 | 683 | 1,032 | 72,724 | 46,996 | 23,361 | 2,367 |
| District 27 | 118,161 | 73,635 | 40,862 | 1,261 | 899 | 1,504 | 88,182 | 57,239 | 28,285 | 943 | 683 | 1,032 | 72,724 | 46,996 | 23,361 | 2,367 |
| | 100.000% | 62.318% | 34.582% | 1.067% | 0.761% | 1.273% | 100.000% | 64.910% | 32.076% | 1.069% | 0.775% | 1.170% | 82.470% | 64.622% | 32.123% | 3.255% |
| District 28 | | | | | | | | | | | | | | | | |
| *Acadia | 6,017 | 5,609 | 270 | 28 | 20 | 90 | 4,374 | 4,089 | 191 | 17 | 14 | 63 | 3,506 | 3,340 | 121 | 45 |
| Allen | 25,764 | 18,435 | 6,192 | 220 | 749 | 168 | 19,870 | 14,288 | 4,828 | 154 | 495 | 105 | 13,110 | 10,190 | 2,397 | 523 |
| *Avoyelles | 37,746 | 24,038 | 12,759 | 159 | 605 | 185 | 28,561 | 18,740 | 9,173 | 114 | 403 | 131 | 20,547 | 14,386 | 5,738 | 423 |
| Evangeline | 33,984 | 23,439 | 9,862 | 139 | 161 | 383 | 24,817 | 17,619 | 6,661 | 97 | 117 | 323 | 21,407 | 15,267 | 5,973 | 167 |
| *St. Landry | 16,221 | 11,541 | 4,313 | 83 | 86 | 198 | 11,914 | 8,747 | 2,888 | 62 | 67 | 150 | 10,690 | 7,719 | 2,753 | 218 |
| District 28 | 119,732 | 83,062 | 33,396 | 629 | 1,621 | 1,024 | 89,536 | 63,483 | 23,741 | 444 | 1,096 | 772 | 69,260 | 50,902 | 16,982 | 1,376 |
| | 100.000% | 69.373% | 27.892% | 0.525% | 1.354% | 0.855% | 100.000% | 70.902% | 26.516% | 0.496% | 1.224% | 0.862% | 77.354% | 73.494% | 24.519% | 1.987% |
| District 29 | | | | | | | | | | | | | | | | |
| *Bienville | 6,455 | 2,560 | 3,775 | 22 | 45 | 53 | 4,991 | 2,115 | 2,792 | 13 | 36 | 35 | 4,232 | 1,673 | 2,536 | 23 |
| *Grant | 6,086 | 4,296 | 1,655 | 28 | 93 | 14 | 4,433 | 3,187 | 1,149 | 19 | 67 | 11 | 3,869 | 2,685 | 1,090 | 94 |
| *Jackson | 6,138 | 3,142 | 2,932 | 11 | 25 | 28 | 4,826 | 2,549 | 2,232 | 9 | 20 | 16 | 3,353 | 1,770 | 1,536 | 47 |
| *Lincoln | 19,530 | 4,405 | 14,396 | 354 | 60 | 315 | 15,356 | 3,719 | 11,019 | 331 | 50 | 237 | 9,028 | 2,040 | 6,607 | 381 |
| *Natchitoches | 11,281 | 2,752 | 8,280 | 60 | 76 | 113 | 8,010 | 2,262 | 5,550 | 54 | 59 | 85 | 5,774 | 1,423 | 4,149 | 202 |
| *Rapides | 62,551 | 25,163 | 35,446 | 777 | 572 | 593 | 45,795 | 20,337 | 24,024 | 585 | 440 | 409 | 35,738 | 15,823 | 18,805 | 1,110 |
| *Winn | 6,118 | 3,180 | 2,818 | 15 | 60 | 45 | 4,427 | 2,437 | 1,906 | 11 | 44 | 29 | 3,985 | 2,103 | 1,847 | 35 |
| District 29 | 118,159 | 45,498 | 69,302 | 1,267 | 931 | 1,161 | 87,838 | 36,606 | 48,672 | 1,022 | 716 | 822 | 65,979 | 27,517 | 36,570 | 1,892 |
| | 100.000% | 38.506% | 58.651% | 1.072% | 0.788% | 0.983% | 100.000% | 41.674% | 55.411% | 1.164% | 0.815% | 0.936% | 75.114% | 41.706% | 55.427% | 2.868% |
| District 30 | | | | | | | | | | | | | | | | |

Splits

| | Total Population | Total White | Total Black | Total Asian | Total American Indian | Total Other | VAP Total | VAP White | VAP Black | VAP Asian | VAP American Indian | VAP Other | Reg Total Jan 2011 | Reg White Jan 2011 | Reg Black Jan 2011 | Reg Other Jan 2011 |
|-----------------|---------------------|----------------|----------------|----------------|-----------------------------|----------------|-----------|-----------|-----------|-----------|---------------------------|-----------|-----------------------|-----------------------|-----------------------|-----------------------|
| District 30 | | | | | | | | | | | | | | | | |
| Beauregard | 35,654 | 29,321 | 5,016 | 353 | 652 | 312 | 26,359 | 21,902 | 3,569 | 239 | 460 | 189 | 19,924 | 16,703 | 2,304 | 917 |
| *Calcasieu | 25,865 | 22,891 | 2,382 | 90 | 325 | 177 | 19,096 | 17,146 | 1,564 | 67 | 211 | 108 | 15,471 | 13,815 | 1,258 | 398 |
| Vernon | 52,334 | 39,614 | 8,313 | 1,426 | 1,177 | 1,804 | 37,822 | 29,416 | 5,349 | 1,026 | 848 | 1,183 | 21,620 | 17,881 | 2,495 | 1,244 |
| District 30 | 113,853 | 91,826 | 15,711 | 1,869 | 2,154 | 2,293 | 83,277 | 68,464 | 10,482 | 1,332 | 1,519 | 1,480 | 57,015 | 48,399 | 6,057 | 2,559 |
| | 100.000% | 80.653% | 13.799% | 1.642% | 1.892% | 2.014% | 100.000% | 82.212% | 12.587% | 1.599% | 1.824% | 1.777% | 68.464% | 84.888% | 10.624% | 4.488% |
| District 31 | | | | | | | | | | | | | | | | |
| *Grant | 2,785 | 2,391 | 347 | 9 | 22 | 16 | 2,135 | 1,837 | 268 | 6 | 16 | 8 | 1,691 | 1,492 | 177 | 22 |
| *Natchitoches | 28,285 | 18,742 | 8,498 | 137 | 573 | 335 | 21,956 | 14,964 | 6,221 | 97 | 418 | 256 | 17,208 | 11,758 | 4,729 | 721 |
| *Rapides | 40,133 | 32,366 | 5,397 | 876 | 745 | 749 | 30,429 | 25,032 | 3,710 | 626 | 568 | 493 | 24,748 | 21,267 | 2,465 | 1,016 |
| Red River | 9,091 | 5,360 | 3,633 | 16 | 43 | 39 | 6,778 | 4,256 | 2,450 | 12 | 34 | 26 | 5,981 | 3,566 | 2,377 | 38 |
| Sabine | 24,233 | 17,155 | 4,234 | 84 | 2,636 | 124 | 18,311 | 13,544 | 2,835 | 63 | 1,796 | 73 | 13,837 | 10,811 | 2,032 | 994 |
| *Winn | 6,350 | 4,366 | 1,825 | 32 | 84 | 43 | 5,259 | 3,525 | 1,612 | 27 | 65 | 30 | 3,158 | 2,646 | 482 | 30 |
| District 31 | 110,877 | 80,380 | 23,934 | 1,154 | 4,103 | 1,306 | 84,868 | 63,158 | 17,096 | 831 | 2,897 | 886 | 66,623 | 51,540 | 12,262 | 2,821 |
| | 100.000% | 72.495% | 21.586% | 1.041% | 3.700% | 1.178% | 100.000% | 74.419% | 20.144% | 0.979% | 3.414% | 1.044% | 78.502% | 77.361% | 18.405% | 4.234% |
| District 32 | | | | | | | | | | | | | | | | |
| *Avoyelles | 4,327 | 4,150 | 117 | 15 | 36 | 9 | 3,229 | 3,110 | 74 | 12 | 28 | 5 | 2,558 | 2,488 | 52 | 18 |
| Caldwell | 10,132 | 8,213 | 1,778 | 30 | 64 | 47 | 7,758 | 6,314 | 1,336 | 23 | 51 | 34 | 6,324 | 5,351 | 911 | 62 |
| Catahoula | 10,407 | 6,985 | 3,318 | 9 | 53 | 42 | 8,057 | 5,543 | 2,438 | 8 | 43 | 25 | 6,380 | 4,749 | 1,596 | 35 |
| *Concordia | 13,657 | 9,767 | 3,704 | 39 | 88 | 59 | 10,431 | 7,417 | 2,884 | 25 | 69 | 36 | 8,220 | 6,290 | 1,818 | 111 |
| Franklin | 20,767 | 13,930 | 6,620 | 65 | 82 | 70 | 15,450 | 10,838 | 4,471 | 42 | 63 | 36 | 13,466 | 9,408 | 3,978 | 80 |
| La Salle | 14,890 | 12,689 | 1,808 | 40 | 215 | 138 | 11,366 | 9,677 | 1,402 | 35 | 143 | 109 | 8,427 | 7,648 | 621 | 158 |
| *Ouachita | 6,099 | 5,460 | 570 | 11 | 46 | 12 | 4,590 | 4,174 | 372 | 4 | 32 | 8 | 4,213 | 3,724 | 360 | 129 |
| *Rapides | 17,375 | 16,029 | 912 | 147 | 216 | 71 | 12,643 | 11,777 | 584 | 91 | 152 | 39 | 10,954 | 10,257 | 410 | 287 |
| *Richland | 710 | 661 | 39 | 8 | 2 | 0 | 555 | 522 | 27 | 4 | 2 | 0 | 437 | 407 | 25 | 5 |
| *West Feliciana | 13,884 | 6,876 | 6,852 | 38 | 26 | 92 | 11,603 | 5,488 | 6,004 | 23 | 25 | 63 | 5,533 | 3,598 | 1,862 | 73 |
| District 32 | 112,248 | 84,760 | 25,718 | 402 | 828 | 540 | 85,682 | 64,860 | 19,592 | 267 | 608 | 355 | 66,512 | 53,920 | 11,633 | 958 |
| | 100.000% | 75.511% | 22.912% | 0.358% | 0.738% | 0.481% | 100.000% | 75.699% | 22.866% | 0.312% | 0.710% | 0.414% | 77.627% | 81.068% | 17.490% | 1.440% |
| District 33 | | | | | | | | | | | | | | | | |
| *Claiborne | 13,340 | 5,516 | 7,663 | 53 | 74 | 34 | 10,787 | 4,654 | 6,018 | 30 | 64 | 21 | 6,409 | 3,093 | 3,243 | 73 |
| *Lincoln | 4,930 | 4,166 | 682 | 18 | 21 | 43 | 3,769 | 3,213 | 501 | 10 | 18 | 27 | 3,128 | 2,671 | 382 | 75 |
| *Morehouse | 18,789 | 12,169 | 6,365 | 105 | 74 | 76 | 14,322 | 9,781 | 4,365 | 71 | 58 | 47 | 12,679 | 8,517 | 3,959 | 203 |
| *Ouachita | 42,027 | 31,780 | 9,092 | 653 | 182 | 320 | 31,228 | 24,495 | 5,949 | 444 | 133 | 207 | 26,441 | 21,463 | 3,988 | 990 |
| Union | 22,721 | 15,682 | 6,242 | 49 | 115 | 633 | 17,493 | 12,568 | 4,439 | 31 | 91 | 364 | 14,964 | 10,863 | 3,709 | 392 |
| West Carroll | 11,604 | 9,497 | 1,870 | 34 | 86 | 117 | 8,746 | 7,254 | 1,330 | 24 | 62 | 76 | 7,167 | 6,017 | 1,096 | 54 |
| District 33 | 113,411 | 78,810 | 31,914 | 912 | 552 | 1,223 | 86,345 | 61,965 | 22,602 | 610 | 426 | 742 | 70,788 | 52,624 | 16,377 | 1,787 |
| | 100.000% | 69.491% | 28.140% | 0.804% | 0.487% | 1.078% | 100.000% | 71.764% | 26.176% | 0.706% | 0.493% | 0.859% | 81.983% | 74.340% | 23.135% | 2.524% |

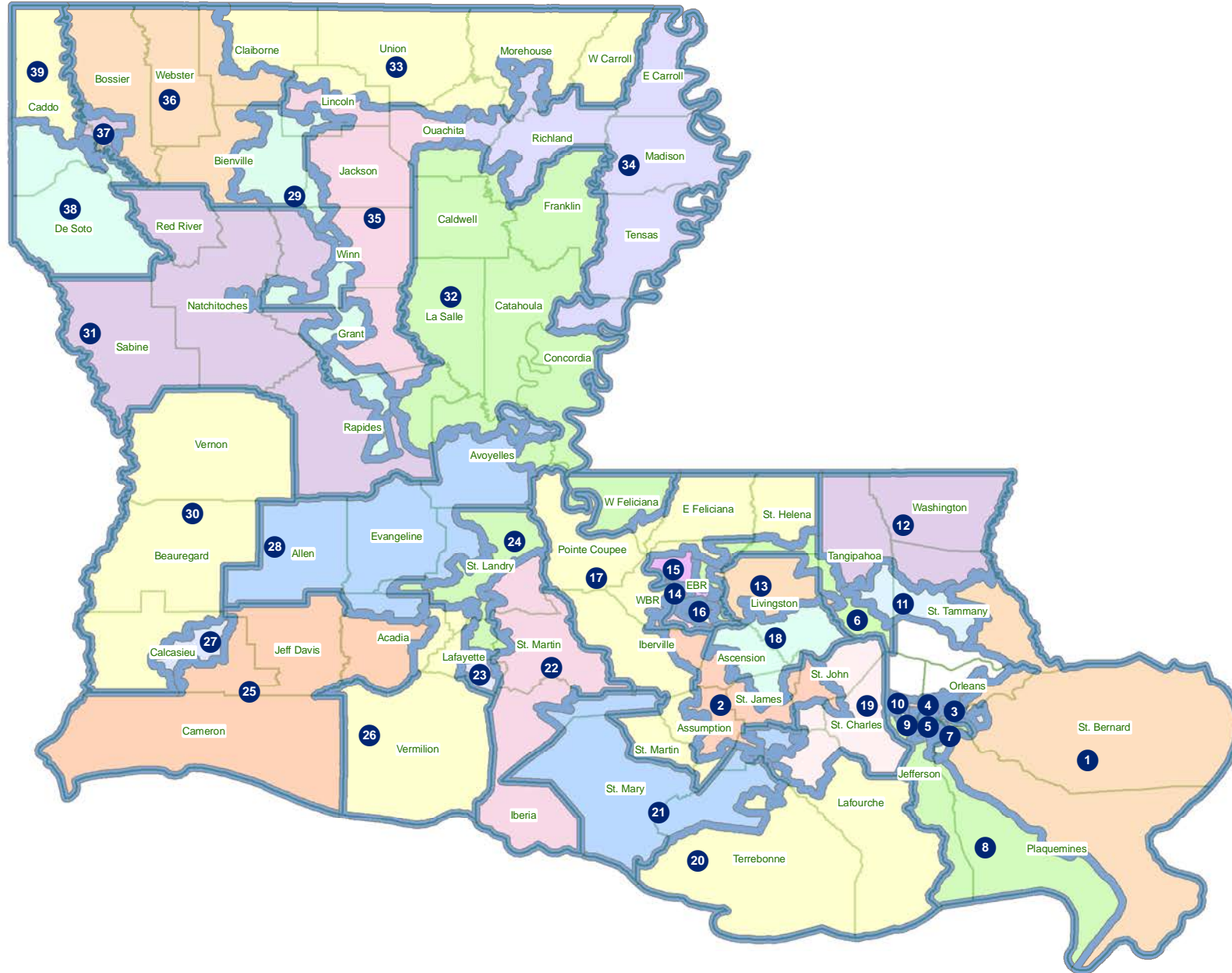
Splits

| | Total Population | Total White | Total Black | Total Asian | Total American Indian | Total Other | VAP Total | VAP White | VAP Black | VAP Asian | VAP American Indian | VAP Other | Reg Total Jan 2011 | Reg White Jan 2011 | Reg Black Jan 2011 | Reg Other Jan 2011 |
|--------------|---------------------|----------------|----------------|----------------|-----------------------------|----------------|-----------|-----------|-----------|-----------|---------------------------|-----------|-----------------------|-----------------------|-----------------------|-----------------------|
| District 34 | | | | | | | | | | | | | | | | |
| *Concordia | 7,165 | 2,192 | 4,900 | 20 | 35 | 18 | 5,158 | 1,881 | 3,233 | 16 | 19 | 9 | 4,476 | 1,707 | 2,711 | 59 |
| East Carroll | 7,759 | 2,245 | 5,398 | 47 | 31 | 38 | 5,766 | 1,845 | 3,830 | 37 | 25 | 29 | 5,330 | 1,617 | 3,664 | 49 |
| Madison | 12,093 | 4,498 | 7,452 | 33 | 55 | 55 | 9,071 | 3,644 | 5,312 | 20 | 45 | 50 | 7,634 | 2,780 | 4,764 | 90 |
| *Morehouse | 9,190 | 2,176 | 6,916 | 37 | 28 | 33 | 6,739 | 1,802 | 4,865 | 31 | 21 | 20 | 6,002 | 1,531 | 4,370 | 101 |
| *Ouachita | 53,240 | 10,092 | 42,269 | 396 | 152 | 331 | 37,935 | 8,763 | 28,480 | 339 | 118 | 235 | 30,941 | 5,542 | 24,174 | 1,225 |
| *Richland | 20,015 | 12,218 | 7,505 | 84 | 94 | 114 | 14,885 | 9,477 | 5,210 | 61 | 68 | 69 | 12,502 | 7,766 | 4,621 | 115 |
| Tensas | 5,252 | 2,202 | 2,991 | 13 | 15 | 31 | 3,923 | 1,796 | 2,085 | 11 | 9 | 22 | 4,131 | 1,807 | 2,304 | 20 |
| District 34 | 114,714 | 35,623 | 77,431 | 630 | 410 | 620 | 83,477 | 29,208 | 53,015 | 515 | 305 | 434 | 71,016 | 22,750 | 46,608 | 1,659 |
| | 100.000% | 31.054% | 67.499% | 0.549% | 0.357% | 0.540% | 100.000% | 34.989% | 63.509% | 0.617% | 0.365% | 0.520% | 85.073% | 32.035% | 65.630% | 2.336% |
| District 35 | | | | | | | | | | | | | | | | |
| *Grant | 13,438 | 11,462 | 1,600 | 60 | 270 | 46 | 10,590 | 8,764 | 1,561 | 42 | 191 | 32 | 6,340 | 6,184 | 17 | 139 |
| *Jackson | 10,136 | 7,942 | 2,015 | 56 | 58 | 65 | 7,744 | 6,132 | 1,492 | 30 | 45 | 45 | 6,493 | 5,109 | 1,269 | 115 |
| *Lincoln | 22,275 | 17,204 | 4,106 | 502 | 149 | 314 | 18,005 | 13,943 | 3,301 | 408 | 115 | 238 | 11,860 | 9,893 | 1,530 | 437 |
| *Ouachita | 52,354 | 45,552 | 5,263 | 662 | 325 | 552 | 39,594 | 34,884 | 3,604 | 461 | 266 | 379 | 32,813 | 29,216 | 2,475 | 1,122 |
| *Rapides | 11,554 | 9,815 | 1,395 | 112 | 149 | 83 | 8,732 | 7,433 | 1,050 | 75 | 110 | 64 | 6,616 | 5,981 | 427 | 208 |
| *Winn | 2,845 | 2,677 | 134 | 6 | 23 | 5 | 2,185 | 2,056 | 101 | 6 | 20 | 2 | 1,749 | 1,661 | 77 | 11 |
| District 35 | 112,602 | 94,652 | 14,513 | 1,398 | 974 | 1,065 | 86,850 | 73,212 | 11,109 | 1,022 | 747 | 760 | 65,871 | 58,044 | 5,795 | 2,032 |
| | 100.000% | 84.059% | 12.889% | 1.242% | 0.865% | 0.946% | 100.000% | 84.297% | 12.791% | 1.177% | 0.860% | 0.875% | 75.845% | 88.118% | 8.797% | 3.085% |
| District 36 | | | | | | | | | | | | | | | | |
| *Bienville | 7,898 | 5,375 | 2,378 | 22 | 87 | 36 | 6,021 | 4,164 | 1,752 | 18 | 69 | 18 | 5,024 | 3,439 | 1,549 | 36 |
| *Bossier | 58,064 | 46,651 | 9,252 | 806 | 578 | 777 | 42,974 | 34,811 | 6,712 | 551 | 425 | 475 | 33,320 | 27,159 | 4,964 | 1,197 |
| *Claiborne | 3,855 | 2,651 | 1,157 | 9 | 25 | 13 | 3,028 | 2,127 | 871 | 7 | 16 | 7 | 2,468 | 1,815 | 629 | 24 |
| Webster | 41,207 | 26,469 | 14,044 | 180 | 316 | 198 | 31,497 | 20,907 | 10,110 | 120 | 241 | 119 | 23,913 | 16,115 | 7,416 | 382 |
| District 36 | 111,024 | 81,146 | 26,831 | 1,017 | 1,006 | 1,024 | 83,520 | 62,009 | 19,445 | 696 | 751 | 619 | 64,725 | 48,528 | 14,558 | 1,639 |
| | 100.000% | 73.089% | 24.167% | 0.916% | 0.906% | 0.922% | 100.000% | 74.244% | 23.282% | 0.833% | 0.899% | 0.741% | 77.496% | 74.976% | 22.492% | 2.532% |
| District 37 | | | | | | | | | | | | | | | | |
| *Bossier | 58,915 | 37,779 | 16,354 | 1,710 | 561 | 2,511 | 43,971 | 29,881 | 10,701 | 1,285 | 412 | 1,692 | 27,514 | 19,504 | 6,527 | 1,483 |
| *Caddo | 51,855 | 38,321 | 10,961 | 1,286 | 438 | 849 | 40,947 | 31,319 | 7,731 | 951 | 344 | 602 | 31,926 | 25,386 | 5,155 | 1,385 |
| District 37 | 110,770 | 76,100 | 27,315 | 2,996 | 999 | 3,360 | 84,918 | 61,200 | 18,432 | 2,236 | 756 | 2,294 | 59,440 | 44,890 | 11,682 | 2,868 |
| | 100.000% | 68.701% | 24.659% | 2.705% | 0.902% | 3.033% | 100.000% | 72.070% | 21.706% | 2.633% | 0.890% | 2.701% | 69.997% | 75.522% | 19.653% | 4.825% |
| District 38 | | | | | | | | | | | | | | | | |
| *Caddo | 85,150 | 52,471 | 29,425 | 1,450 | 798 | 1,006 | 64,993 | 41,937 | 20,730 | 1,029 | 605 | 692 | 51,140 | 33,620 | 15,526 | 1,994 |
| De Soto | 26,656 | 15,456 | 10,600 | 54 | 331 | 215 | 20,006 | 12,055 | 7,495 | 42 | 273 | 141 | 16,396 | 9,663 | 6,191 | 542 |
| District 38 | 111,806 | 67,927 | 40,025 | 1,504 | 1,129 | 1,221 | 84,999 | 53,992 | 28,225 | 1,071 | 878 | 833 | 67,536 | 43,283 | 21,717 | 2,536 |
| | 100.000% | 60.754% | 35.799% | 1.345% | 1.010% | 1.092% | 100.000% | 63.521% | 33.206% | 1.260% | 1.033% | 0.980% | 79.455% | 64.089% | 32.156% | 3.755% |
| District 39 | | | | | | | | | | | | | | | | |

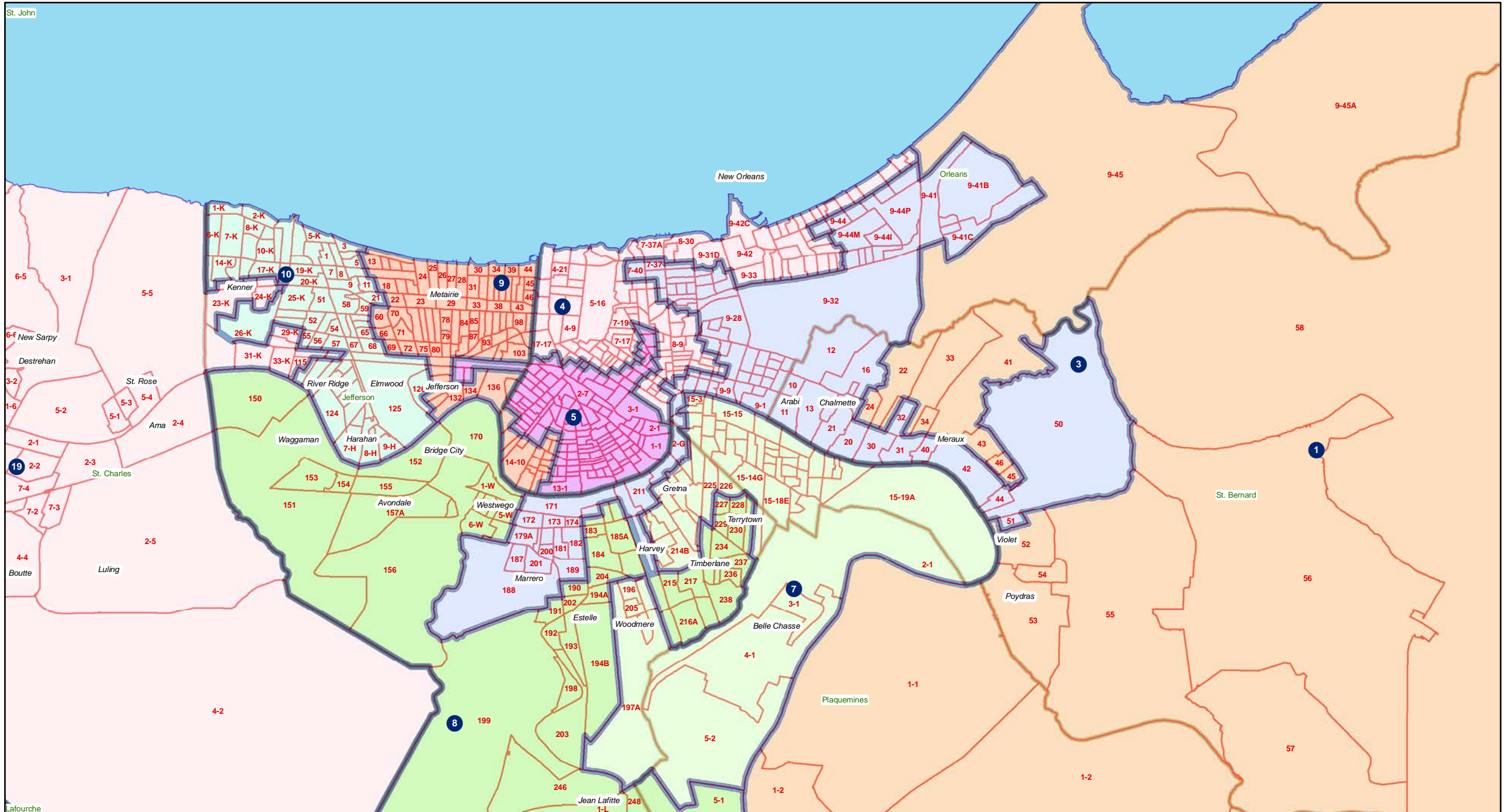
Splits

| | Total Population | Total White | Total Black | Total Asian | Total American Indian | Total Other | VAP Total | VAP White | VAP Black | VAP Asian | VAP American Indian | VAP Other | Reg Total Jan 2011 | Reg White Jan 2011 | Reg Black Jan 2011 | Reg Other Jan 2011 |
|-------------|---------------------|----------------|----------------|----------------|-----------------------------|----------------|-----------|-----------|-----------|-----------|---------------------------|-----------|-----------------------|-----------------------|-----------------------|-----------------------|
| District 39 | | | | | | | | | | | | | | | | |
| *Caddo | 117,964 | 34,150 | 81,843 | 494 | 670 | 807 | 86,375 | 27,492 | 57,441 | 383 | 506 | 553 | 68,308 | 20,157 | 46,027 | 2,124 |
| District 39 | 117,964 | 34,150 | 81,843 | 494 | 670 | 807 | 86,375 | 27,492 | 57,441 | 383 | 506 | 553 | 68,308 | 20,157 | 46,027 | 2,124 |
| | 100.000% | 28.950% | 69.380% | 0.419% | 0.568% | 0.684% | 100.000% | 31.829% | 66.502% | 0.443% | 0.586% | 0.640% | 79.083% | 29.509% | 67.382% | 3.109% |

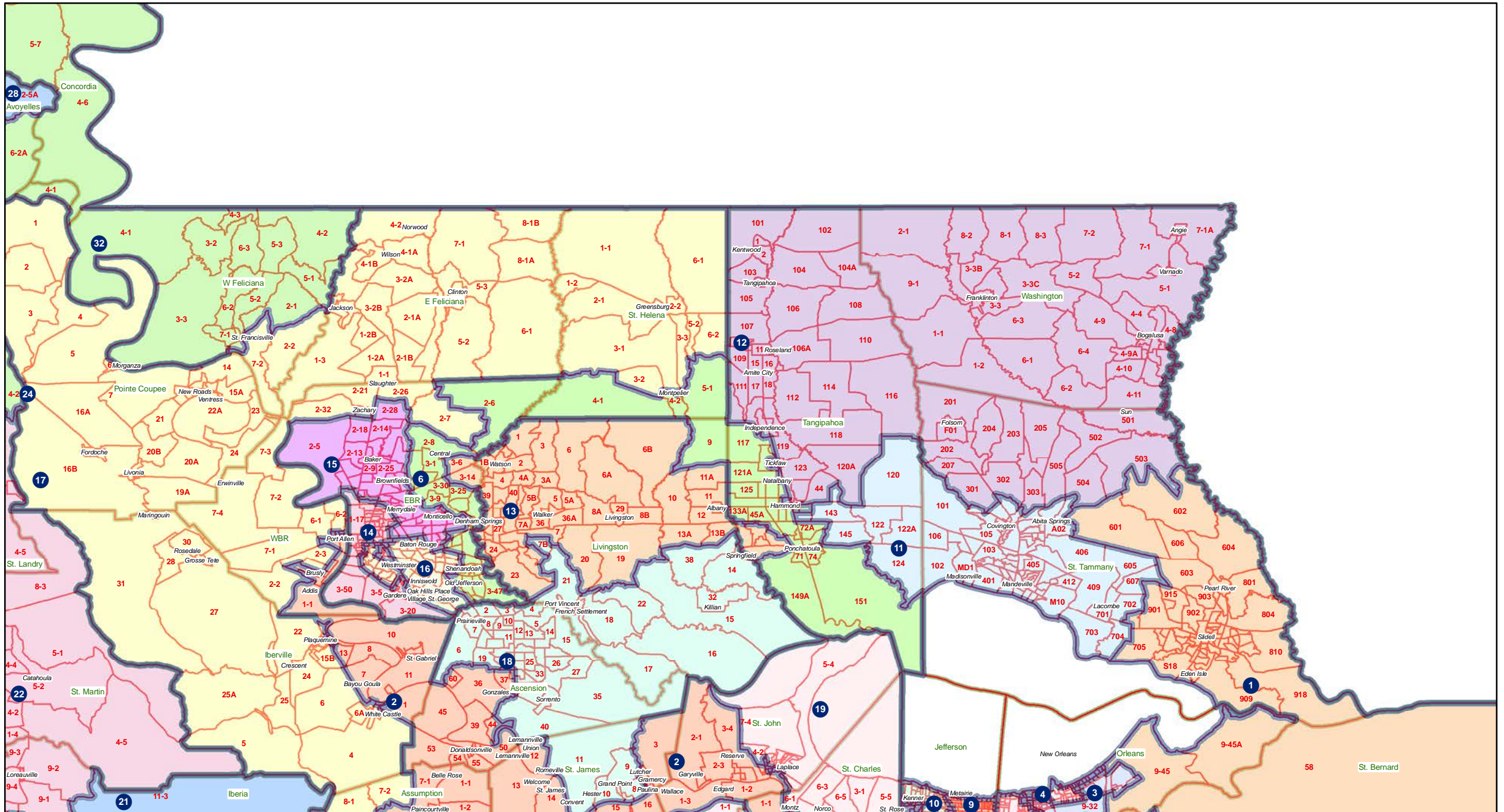
Senate - Statewide



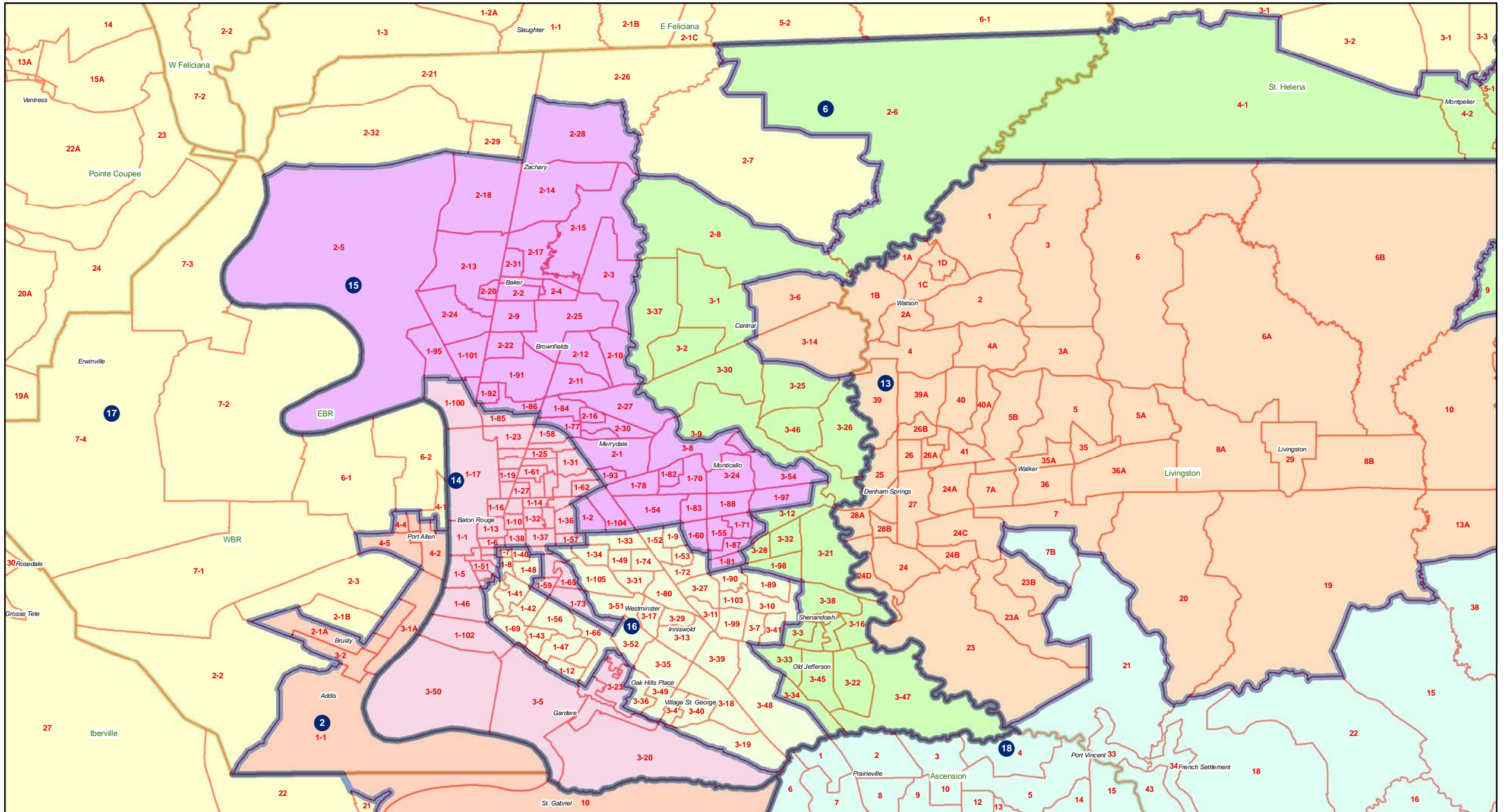
Senate - Jefferson / Orleans



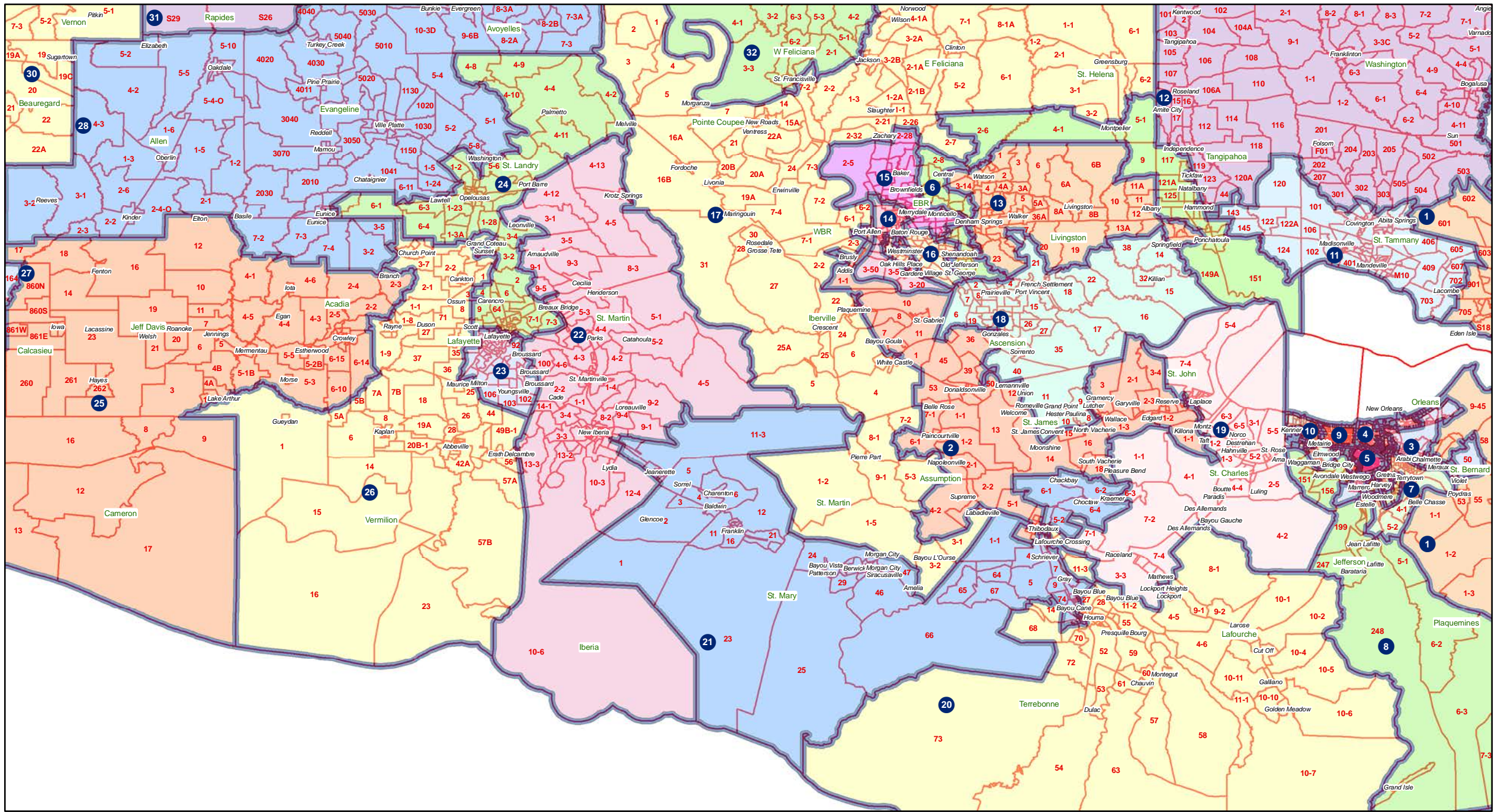
Senate - Florida Parishes



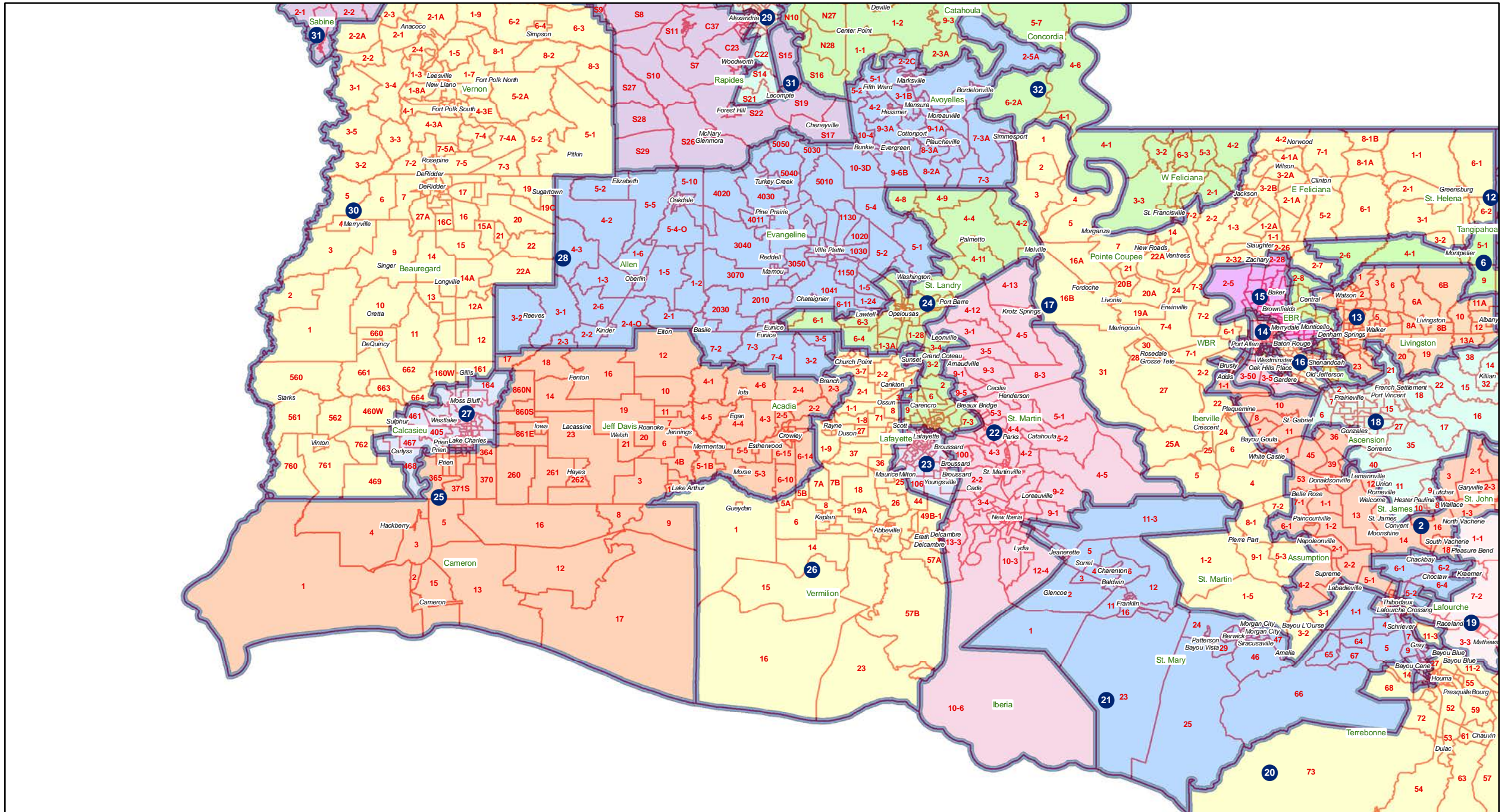
Senate - Baton Rouge



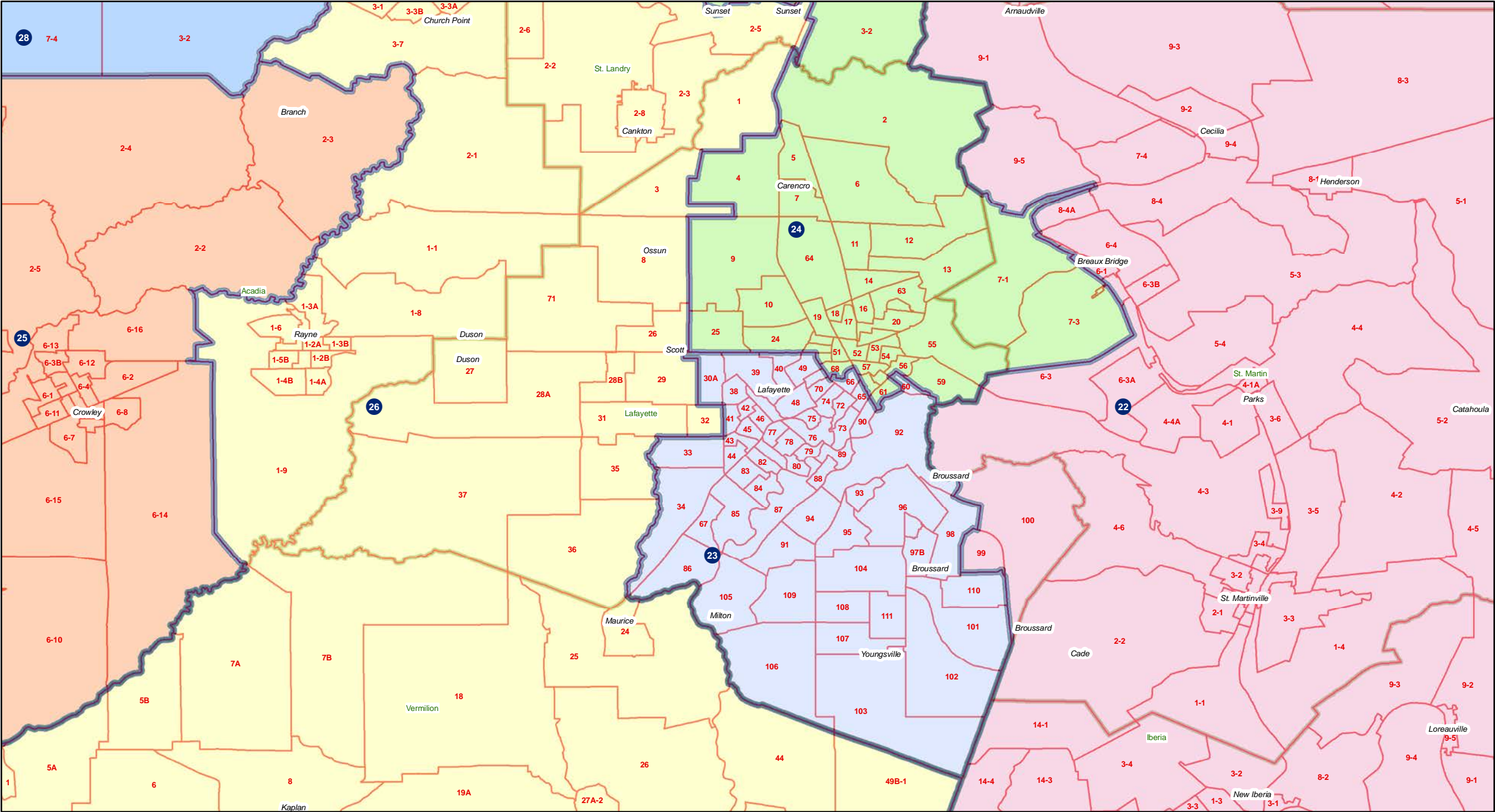
Senate - Acadiana - Bayou - River



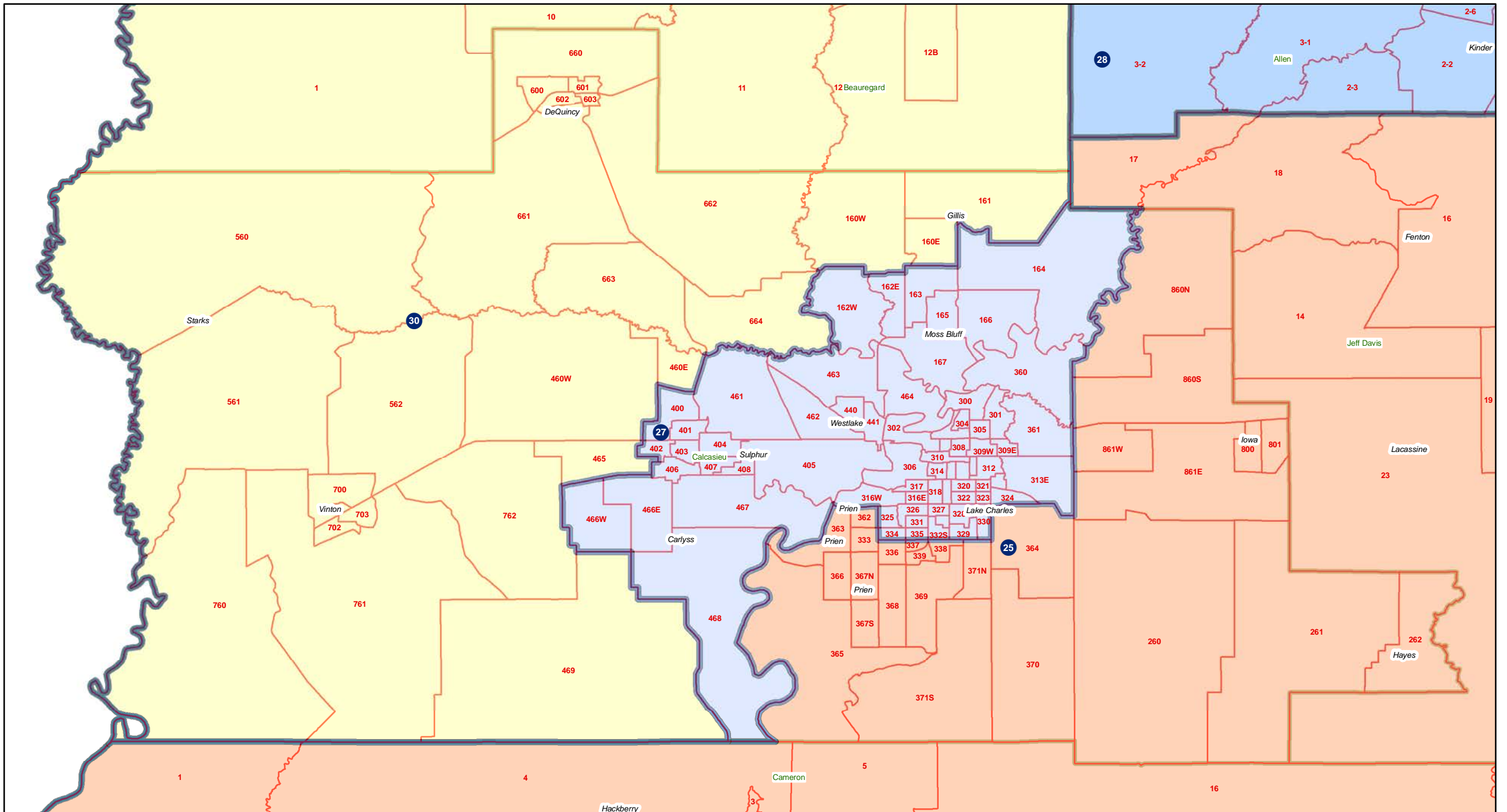
Senate - Southwest



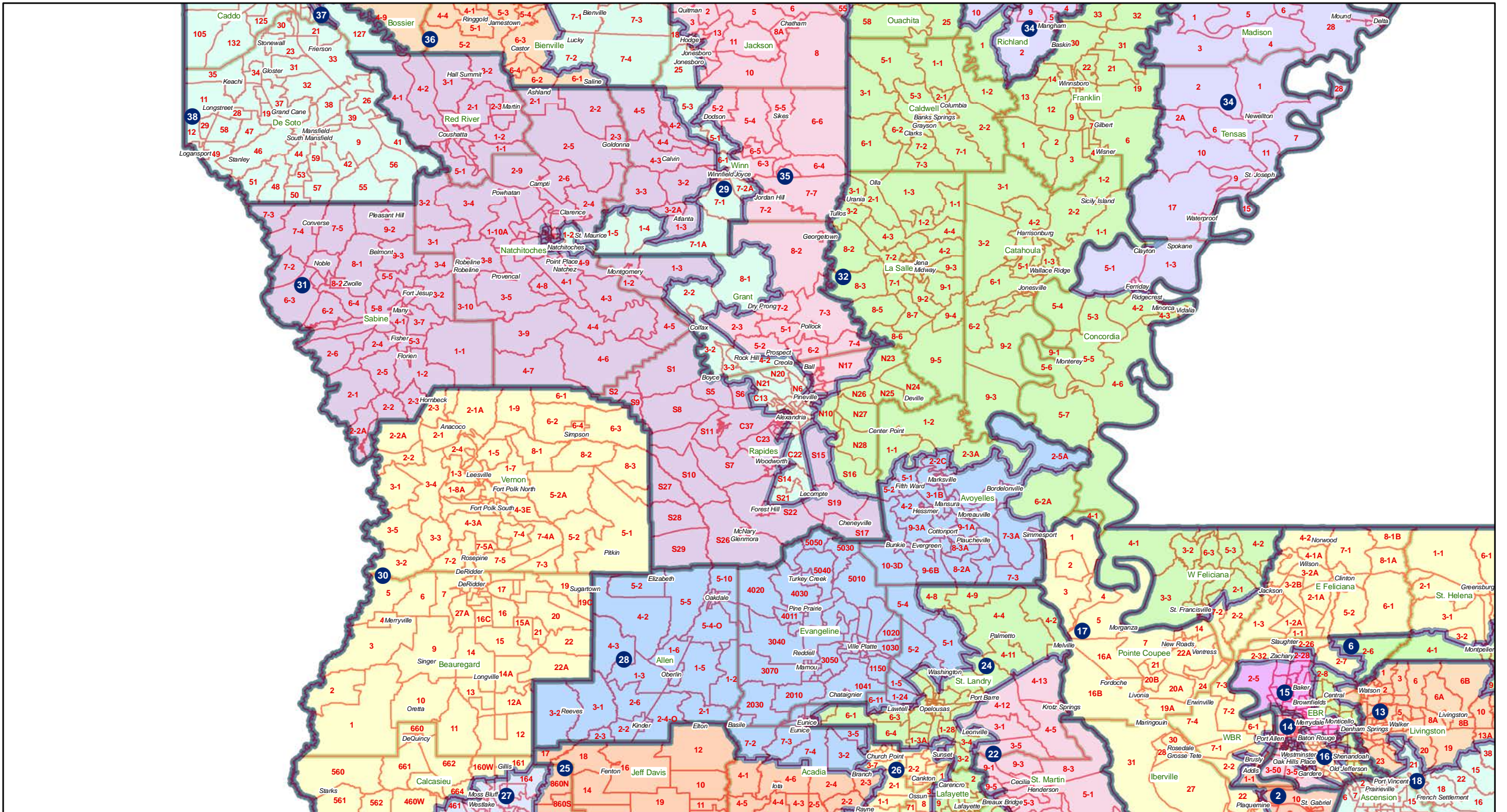
Senate - Lafayette



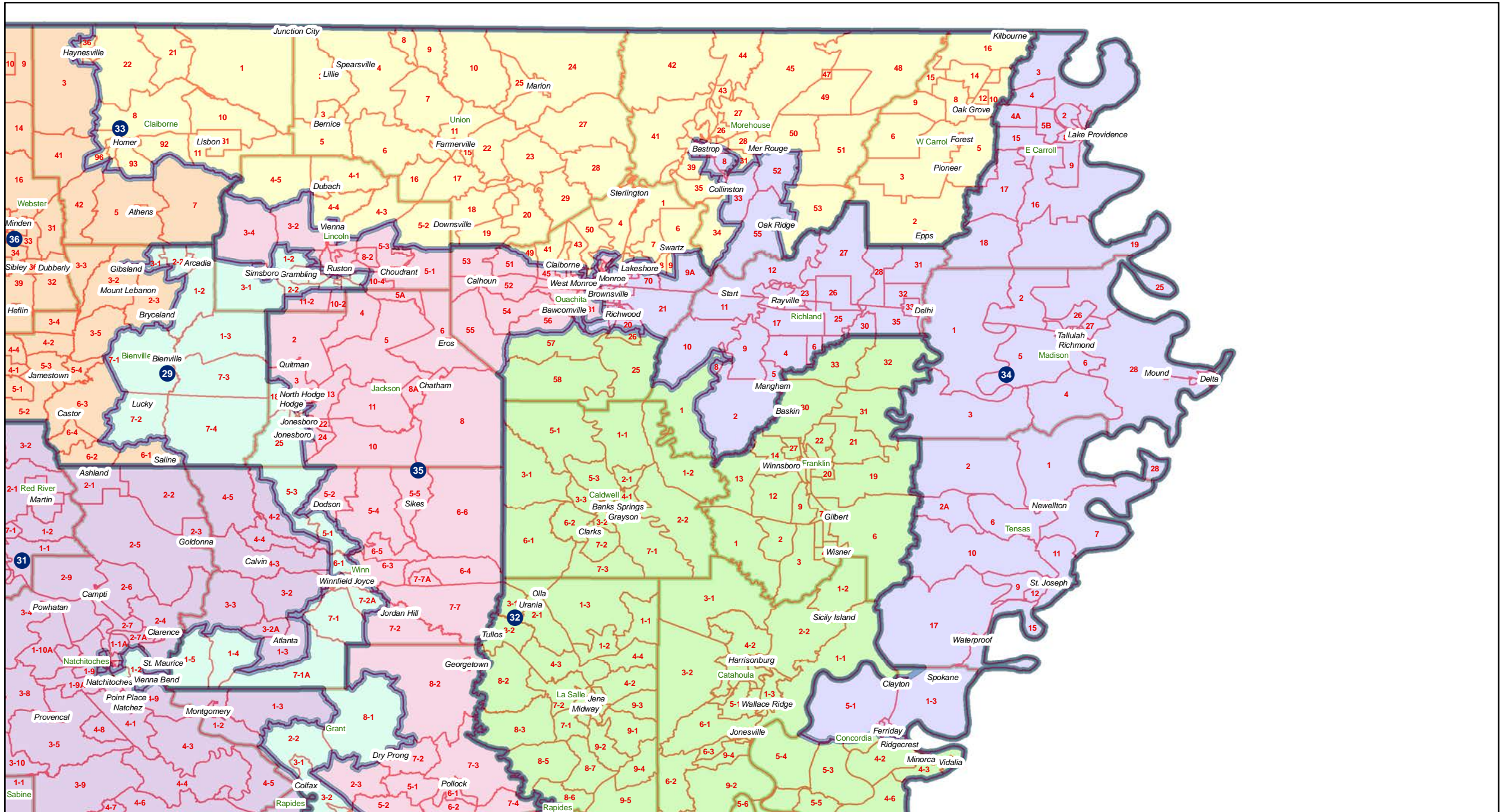
Senate - Calcasieu



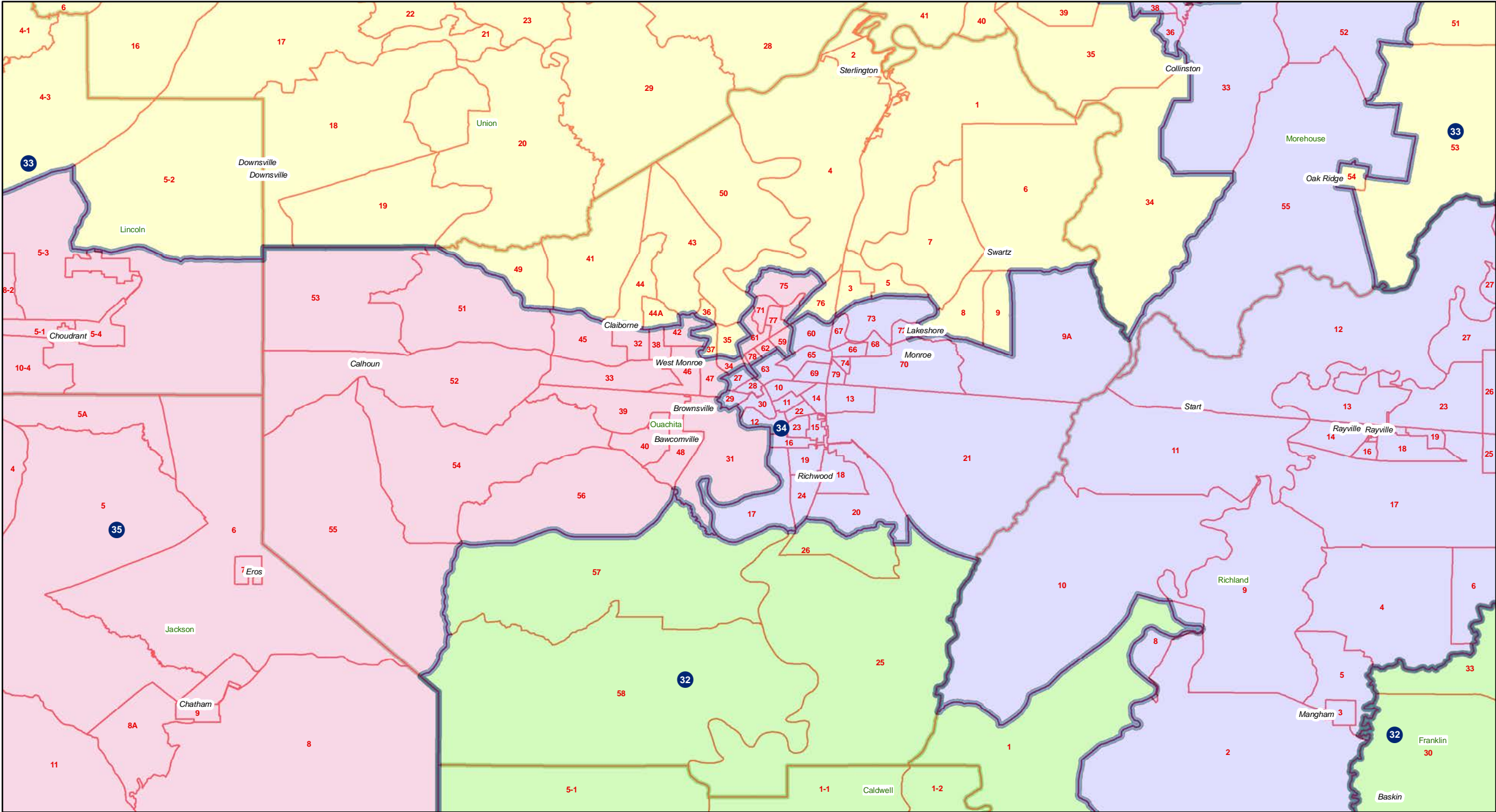
Senate - Central



Senate - Northeast



Senate - Ouachita



Senate - Shreveport

