

2022 First Extraordinary Session

SENATE BILL NO. 21

BY SENATOR BARROW

BESE. Provides for redistricting the State Board of Elementary and Secondary Education.  
(Item #4)

1 AN ACT

2 To enact R.S. 17:2.2 and to repeal R.S. 17:2.1, relative to redistricting; to provide for  
3 election districts for the State Board of Elementary and Secondary Education; to  
4 provide for election of members; to provide for effectiveness; and to provide for  
5 related matters.

6 Be it enacted by the Legislature of Louisiana:

7 Section 1. R.S. 17:2.2 is hereby enacted to read as follows:

8 **§2.2. Districts for election of members of the State Board of Elementary and**  
9 **Secondary Education**

10 **Louisiana shall be divided into eight districts for the election of eight of**  
11 **the members of the State Board of Elementary and Secondary Education. One**  
12 **member shall be elected from each of the following districts:**

- 13 **(1) District 1 is composed of Precincts 1, 2, 3, 4, 5, 7, 8, 9, 10, 11, 12, 13,**
- 14 **14, 15, 16, 17, 18, 19, 20, 21, 22, 23, 24, 25, 26, 27, 28, 29, 30, 31, 32, 33, 34, 35, 36,**
- 15 **37, 38, 39, 40, 41, 42, 43, 44, 45, 46, 51, 52, 53, 54, 55, 56, 58, 59, 60, 61, 62, 63, 64,**
- 16 **65, 66, 67, 68, 69, 70, 71, 72, 73, 74, 75, 76, 77, 78, 79, 80, 81, 82, 83, 84, 85, 86, 87,**
- 17 **88, 89, 90, 91, 92, 93, 94, 95, 96, 97, 98, 99, 100, 101, 102, 103, 105, 106, 116, 117,**

1 118, 119, 120, 121, 122, 123, 124, 125A, 125B, 126, 127, 128, 129, 130, 132, 134,  
2 136, 138, 170, 171, 172, 175, 176, 177, 178, 179A, 182, 183, 184, 185A, 189, 190,  
3 204, 1-H, 2-H, 3-H, 4-H, 5-H, 6-H, 7-H, 8-H, 9-H, 1-K, 2-K, 3-K, 4-K, 5-K, 6-KA,  
4 6-KB, 7-KA, 7-KB, 8-K, 9-K, 10-K, 11-K, 12-K, 13-KA, 14-K, 16-K, 17-K, 18-K,  
5 19-K, 20-K, 25-K, 27-K, 28-K, 29-K, 34-K, 35-K, 1-W, 3-W, 4-W, 5-W, 6-W and  
6 7-W of Jefferson Parish; Precincts 3-20, 4-7, 4-8, 4-9, 4-11, 4-14, 4-15, 4-17,  
7 4-17A, 4-18, 4-20, 4-21, 4-22, 4-23, 5-15, 5-16, 5-17, 5-18, 7-41, 7-42, 13-4, 13-6,  
8 13-7, 13-8, 13-9, 13-10, 14-1, 14-2, 14-3, 14-4, 14-5, 14-6, 14-7, 14-8, 14-9, 14-10,  
9 14-11, 14-12, 14-13A, 14-14, 14-15, 14-16, 14-17, 14-18A, 14-19, 14-20, 14-21,  
10 16-1, 16-1A, 16-2, 17-1, 17-17, 17-18, 17-18A, 17-19 and 17-20 of Orleans Parish;  
11 St. Tammany Parish and Precincts 1-2, 4-1, 4-2A, 4-3, 4-3B, 4-5, 4-5B, 4-6, 4-7,  
12 4-7B, 4-8, 4-9, 4-9A, 4-10, 4-10A, 4-11, 6-1, 6-2 and 6-4 of Washington Parish.

13 (2) District 2 is composed of Precincts 1-1, 1-2, 2-1, 2-2, 2-5, 4-1, 4-2, 4-3,  
14 5-1, 5-5, 6-1, 6-2, 6-3 and 7-1 of Assumption Parish; Precincts 57, 104, 108, 115,  
15 131, 133, 150, 151, 152, 153, 154, 155, 156, 157A, 157B, 173, 174, 179B, 180, 181,  
16 185B, 187, 188, 191, 194A, 195, 196, 197A, 197B, 200, 201, 202, 205, 210, 211,  
17 212, 213A, 213B, 213C, 214A, 214B, 215, 216A, 216B, 216C, 217, 225, 232A,  
18 232B, 1-G, 2-G, 4-G, 6-G, 7-G, 13-KB, 15-K, 21-K, 22-K, 23-K, 24-K, 26-K,  
19 30-K, 31-K, 33-K and 2-W of Jefferson Parish; Precincts 1-1, 1-2, 1-5, 1-6, 2-1,  
20 2-2, 2-4, 2-6, 2-7, 3-1, 3-8, 3-9, 3-12, 3-14, 3-15, 3-18, 3-19, 4-2, 4-3, 4-5, 4-6, 5-1,  
21 5-2, 5-3, 5-5, 5-7, 5-8, 5-9, 5-10, 5-11, 5-12, 5-13, 6-1, 6-2, 6-4, 6-6, 6-7, 6-8, 6-9,  
22 7-1, 7-2, 7-4, 7-5, 7-6, 7-7, 7-8, 7-9A, 7-10, 7-11, 7-12, 7-13, 7-14, 7-15, 7-16, 7-17,  
23 7-18, 7-19, 7-20, 7-21, 7-23, 7-24, 7-25, 7-25A, 7-26, 7-27, 7-27B, 7-28, 7-28A,  
24 7-29, 7-30, 7-32, 7-33, 7-35, 7-37, 7-37A, 7-40, 8-1, 8-2, 8-4, 8-6, 8-7, 8-8, 8-9,  
25 8-12, 8-13, 8-14, 8-15, 8-19, 8-20, 8-21, 8-22, 8-23, 8-24, 8-25, 8-26, 8-27, 8-28,  
26 8-30, 9-1, 9-3, 9-4, 9-5, 9-6, 9-7, 9-8, 9-9, 9-10, 9-11, 9-12, 9-13, 9-14, 9-15, 9-16,  
27 9-17, 9-19, 9-21, 9-23, 9-25, 9-26, 9-28, 9-28C, 9-29, 9-30, 9-30A, 9-31, 9-31A,  
28 9-31B, 9-31D, 9-32, 9-33, 9-34A, 9-35, 9-35A, 9-36, 9-36B, 9-37, 9-38, 9-38A,  
29 9-39, 9-39B, 9-40, 9-40A, 9-40C, 9-41, 9-41A, 9-41B, 9-41C, 9-41D, 9-42, 9-42C,

1 9-43A, 9-43B, 9-43C, 9-43E, 9-43F, 9-43G, 9-43H, 9-43I, 9-43J, 9-43K, 9-43L,  
 2 9-43M, 9-43N, 9-44, 9-44A, 9-44B, 9-44D, 9-44E, 9-44F, 9-44G, 9-44I, 9-44J,  
 3 9-44L, 9-44M, 9-44N, 9-44O, 9-44P, 9-44Q, 9-45, 9-45A, 10-3, 10-6, 10-7, 10-8,  
 4 10-9, 10-11, 10-12, 10-13, 10-14, 11-2, 11-3, 11-4, 11-5, 11-8, 11-9, 11-10, 11-11,  
 5 11-12, 11-13, 11-14, 11-17, 12-1, 12-2, 12-3, 12-4, 12-5, 12-6, 12-7, 12-8, 12-9,  
 6 12-10, 12-11, 12-12, 12-13, 12-14, 12-16, 12-17, 12-19, 13-1, 13-2, 13-3, 13-5,  
 7 13-11, 13-12, 13-13, 13-14, 13-15, 13-16, 14-23, 14-24A, 14-25, 14-26, 15-1, 15-2,  
 8 15-3, 15-5, 15-6, 15-8, 15-9, 15-10, 15-11, 15-12, 15-12A, 15-13, 15-13A, 15-13B,  
 9 15-14, 15-14A, 15-14B, 15-14C, 15-14D, 15-14E, 15-14F, 15-14G, 15-15, 15-15A,  
 10 15-15B, 15-16, 15-17, 15-17A, 15-17B, 15-18, 15-18A, 15-18B, 15-18C, 15-18D,  
 11 15-18E, 15-18F, 15-19, 15-19A, 15-19B, 15-19C, 16-3, 16-4, 16-5, 16-6, 16-7, 16-8,  
 12 16-9, 17-2, 17-3, 17-4, 17-5, 17-6, 17-7, 17-8, 17-9, 17-10, 17-11, 17-12, 17-13,  
 13 17-13A, 17-14, 17-15 and 17-16 of Orleans Parish; St. Charles Parish; St. James  
 14 Parish and Precincts 1-2, 1-3, 1-4, 1-5, 2-1, 2-2, 2-3, 2-4, 3-1, 3-2, 3-4, 4-1, 4-2,  
 15 4-3, 4-13, 4-14, 5-1, 5-4, 5-7, 5-8, 6-1, 6-3, 6-4, 7-2, 7-3, 7-5 and 7-7 of St. John the  
 16 Baptist Parish.

17 (3) District 3 is composed of Precinct 53 of Ascension Parish; Precincts  
 18 2-3, 2-4, 3-1, 3-2, 5-2, 5-3, 7-2, 7-3, 8-1 and 9-1 of Assumption Parish; Iberia  
 19 Parish; Precincts 4, 5, 25, 26, 27, 28 and 29 of Iberville Parish; Precincts 192,  
 20 193A, 193B, 194B, 198, 199, 203, 226, 227, 228, 229, 230, 231, 234, 235, 236, 237,  
 21 238A, 238B, 246, 247, 248, 3-G, 5-G, 8-G, 9-G, 10-G, 11-G, 12-G, 13-G, 1-GI and  
 22 1-L of Jefferson Parish; Precincts 96, 97, 98, 99, 100, 101, 102, 110, 111, 115,  
 23 116, 118 and 127 of Lafayette Parish; Lafourche Parish; Plaquemines Parish;  
 24 Precincts 13, 14, 15, 16, 17, 18, 19 and 20 of Pointe Coupee Parish; St. Bernard  
 25 Parish; Precinct 1-1 of St. John the Baptist Parish; Precincts 7, 7A, 13, 14, 15,  
 26 16, 17, 29, 30, 31, 39 and 40 of St. Landry Parish; Precincts 1, 2, 3, 4, 5, 6, 11, 12,  
 27 13, 15, 16, 19, 20, 21, 22, 24, 25, 27, 28 and 29 of St. Martin Parish; St. Mary  
 28 Parish; Terrebonne Parish and Precincts 49B-1, 49B-2 and 53 of Vermilion  
 29 Parish.

1                   **(4) District 4 is composed of Precincts 1-3, 5-2, 5-3, 5-4, 6-1, 6-2, 6-3, 6-4,**  
2                   **7-2, 7-3, 7-4 and 7-5 of Bienville Parish; Precincts 1-1, 1-2, 1-3, 1-3A, 1-3B, 1-4,**  
3                   **1-5, 2-1, 2-2, 2-3, 2-4, 2-18B, 2-18C, 2-18D, 2-18E, 2-18F, 2-18G, 2-21A, 2-21B,**  
4                   **2-21C, 2-21D, 2-22A, 2-22B, 2-22C, 3-1, 3-2, 3-3, 3-4, 4-1A, 4-2, 4-3A, 4-3B,**  
5                   **4-3C, 4-3D, 4-4A, 4-4B, 4-6A, 4-6B, 4-7A, 4-7B, 4-8A, 4-8B, 4-8E, 4-8G, 4-9,**  
6                   **4-10, 4-11A, 4-11B and 4-11C of Bossier Parish; Precincts 66, 105, 123, 125, 132,**  
7                   **133, 134, 135, 136A, 136B, 137, 138, 139, 140, 142, 143, 144, 145, 146, 149, 151,**  
8                   **154, 155, 156, 157, 158, 160, 161, 162, 163, 165 and 166 of Caddo Parish;**  
9                   **Caldwell Parish; Catahoula Parish; Precincts 1, 3, 7, 21, 31, 34, 35, 36, 37, 41,**  
10                   **42, 91 and 92 of Claiborne Parish; Concordia Parish; Precincts 10, 11, 16, 22,**  
11                   **23, 28, 30, 35, 37, 46, 48, 49, 51 and 53 of De Soto Parish; Precincts 1020, 1031,**  
12                   **1040, 1041, 1050, 1060, 1091, 1130, 1140, 1150, 1161, 2010, 2010A, 2020, 2030,**  
13                   **2040, 3010, 3031, 3040, 3052, 3070, 3071, 4001, 4010, 4011, 4012, 4020, 4021,**  
14                   **4030, 4040, 5004, 5010, 5020, 5030, 5040, 5041 and 5050 of Evangeline Parish;**  
15                   **Grant Parish; Precincts 1, 2, 3, 5A, 8, 8A, 9, 10, 10A, 11, 11A, 13A, 17, 18, 22,**  
16                   **25, 25A and 25B of Jackson Parish; La Salle Parish; Precincts 3-2, 3-4, 3-5, 3-6,**  
17                   **4-1, 4-2, 4-3, 4-4, 4-5, 4-6, 5-1, 5-2, 5-3, 5-4, 6-1, 6-2, 6-3, 7-1, 7-2, 8-1, 8-2, 8-3,**  
18                   **8-4, 9-2, 9-3, 9-4, 9-5, 10-3, 12-2, 12-3, 12-4 and 12-5 of Lincoln Parish; Precincts**  
19                   **6, 23, 26-1, 27, 29, 40, 42, 45, 47, 48, 50, 53 and 54 of Morehouse Parish;**  
20                   **Precincts 1-1A, 1-2, 1-6, 1-7, 1-9, 1-9A, 1-10, 1-10A, 1-10B, 1-11, 1-12, 2-1, 2-2,**  
21                   **2-3, 2-4, 2-5, 2-6, 2-7A, 2-9, 3-1, 3-2, 3-3, 3-5, 3-6, 3-8, 3-9, 3-10, 4-1, 4-2, 4-3, 4-4,**  
22                   **4-5, 4-6, 4-7, 4-8 and 4-9 of Natchitoches Parish; Rapides Parish; Precincts 1-1,**  
23                   **1-2, 2-1, 2-3, 3-1, 3-2, 3-3 and 7-1 of Red River Parish; Sabine Parish; Union**  
24                   **Parish; Vernon Parish; Precincts 1, 2, 2B, 3, 4, 5, 6, 8, 9, 10, 11, 12, 13, 14, 15,**  
25                   **16, 17, 28, 29 and 31 of Webster Parish; West Carroll Parish and Winn Parish.**

26                   **(5) District 5 is composed of Precincts 1-1, 1-2, 1-4, 2-1, 2-2, 2-3, 2-4, 2-5,**  
27                   **2-6, 3-1, 3-2, 3-3, 3-4, 3-5, 3-6, 3-7, 4-1, 4-2, 4-4, 5-1 and 7-1 of Bienville Parish;**  
28                   **Precincts 2-3A, 2-5A, 2-6, 2-7, 2-8, 2-9, 2-10, 2-11, 2-11A, 2-12A, 2-12B, 2-12C,**  
29                   **2-13, 2-14, 2-15, 2-16, 2-17A, 2-17B, 2-19, 2-20, 2-23, 4-5A, 4-8C and 4-8D of**

1 Bossier Parish; Precincts 1, 2, 3, 4, 5A, 5B, 6, 7, 8, 9, 10, 11, 12, 13, 14, 15, 16, 17,  
2 20, 21, 22, 23, 24, 25, 26, 27, 28, 29, 30, 31, 32, 34, 35, 36, 37, 38, 39, 40, 41, 43, 44,  
3 45, 46, 47, 48, 49, 50, 51, 52, 53, 54, 55, 56, 57, 58, 59, 60, 61, 62, 63, 64, 65, 67, 68,  
4 69, 70, 71, 72, 73, 74, 75, 76, 77, 78, 79, 80, 81, 82, 83, 84, 85, 86, 87, 88, 89, 90, 91,  
5 92, 93, 94, 95, 97, 98, 99, 100, 101, 102, 103, 104, 106, 107, 108, 109, 110, 111, 112,  
6 113, 114, 115, 122, 126, 127, 128 and 129 of Caddo Parish; Precincts 5, 8, 10, 11,  
7 51, 81, 84, 85, 87, 88, 93 and 96 of Claiborne Parish; Precincts 1, 4, 5, 6, 9, 21,  
8 26, 31, 32, 33, 34, 38, 42, 44, 55, 56, 59, 60 and 63 of De Soto Parish; East Carroll  
9 Parish; Franklin Parish; Precincts 4, 5, 6, 6A, 7, 13, 15, 16, 17A, 19A, 19AI, 20  
10 and 20A of Jackson Parish; Precincts 1-1, 1-2, 1-3, 2-1, 2-2, 3-1, 3-3, 9-1, 10-1,  
11 10-2, 10-4, 10-5, 11-1, 11-2, 11-3, 11-4, 12-1 and 12-6 of Lincoln Parish; Madison  
12 Parish; Precincts 1, 3-1, 7, 8, 12, 13, 14, 16, 20, 21, 24, 31, 32, 35, 37, 39-1 and  
13 39-2 of Morehouse Parish; Precincts 1-1, 1-3, 1-3A, 1-4, 1-4A, 1-5, 1-5A, 1-8,  
14 1-13, 1-14, 2-7, 2-8, 3-4 and 3-7 of Natchitoches Parish; Ouachita Parish;  
15 Precincts 4-1, 4-2, 4-3, 4-5, 5-1, 5-2, 6-1, 6-2, 7-2 and 7-3 of Red River Parish;  
16 Richland Parish; Tensas Parish and Precincts 17A, 18, 22, 24, 25, 25A, 26, 27,  
17 32, 33, 34, 35, 36, 38, 39, 40, 41, 42 and 43 of Webster Parish.

18 (6) District 6 is composed of Precincts 1, 2, 3, 4, 5, 6, 7, 8, 9, 10, 11, 12,  
19 13, 14, 15, 16, 17, 18, 20, 21, 22, 23, 24, 25, 26, 27, 28, 31, 32, 33, 34, 35, 40, 41, 43,  
20 58, 61, 62, 63, 64, 66, 71, 72, 73, 76, 77 and 78 of Ascension Parish; Precincts 1-7,  
21 1-8, 1-9, 1-12, 1-33, 1-34, 1-35, 1-39, 1-40, 1-41, 1-42, 1-43, 1-44, 1-46, 1-47, 1-48,  
22 1-49, 1-52, 1-53, 1-55, 1-56, 1-57, 1-60, 1-64, 1-65, 1-68, 1-69, 1-72, 1-74, 1-75,  
23 1-76, 1-79, 1-80, 1-89, 1-90, 1-98, 1-99, 1-102, 1-103, 1-105, 2-6, 2-7, 2-8, 2-18,  
24 2-21, 2-26, 2-29, 2-33, 2-34, 2-35, 2-36, 3-1, 3-2, 3-3, 3-4, 3-6, 3-7, 3-9, 3-10, 3-11,  
25 3-13, 3-14, 3-15, 3-16, 3-17, 3-18, 3-19, 3-20, 3-22, 3-25, 3-26, 3-27, 3-28, 3-29,  
26 3-30, 3-31, 3-32, 3-33, 3-34, 3-35, 3-36, 3-37, 3-38, 3-39, 3-40, 3-41, 3-43, 3-45,  
27 3-46, 3-47, 3-48, 3-49, 3-51, 3-52, 3-53, 3-56, 3-58, 3-59, 3-60, 3-61, 3-62, 3-63,  
28 3-64, 3-66, 3-67, 3-68, 3-70, 3-71 and 3-72 of East Baton Rouge Parish;  
29 Livingston Parish; Precincts 28, 44, 48, 49, 70, 70A, 71, 72, 72A, 73, 74, 102, 104,

1 104A, 106, 106A, 108, 110, 112, 114, 116, 118, 119, 120, 120A, 120B, 122, 122A,  
 2 122B, 124, 124A, 133A, 137, 137A, 137B, 137C, 137D, 139, 141, 141A, 143, 143A,  
 3 145, 147, 149, 149A and 151 of Tangipahoa Parish and Precincts 1-1, 2-1, 3-1,  
 4 3-2, 3-3, 3-3A, 3-3B, 3-3C, 4-1A, 4-4, 5-1, 5-2, 5-3, 6-3, 7-1, 7-1A, 7-2, 7-3, 8-1,  
 5 8-2, 8-3 and 9-1 of Washington Parish.

6 (7) District 7 is composed of Acadia Parish; Allen Parish; Beauregard  
 7 Parish; Calcasieu Parish; Cameron Parish; Jefferson Davis Parish; Precincts  
 8 1, 2, 3, 4, 6, 8, 9, 10, 11, 12, 13, 25, 26, 27, 28, 29, 30, 31, 32, 33, 34, 35, 36, 37, 38,  
 9 39, 40, 41, 42, 43, 44, 45, 46, 47, 48, 49, 65, 66, 67, 69, 70, 71, 72, 73, 74, 75, 76, 77,  
 10 78, 79, 80, 81, 82, 83, 84, 85, 86, 87, 88, 89, 90, 91, 92, 93, 94, 95, 103, 104, 105,  
 11 106, 107, 108, 109, 113, 114, 117, 119, 120, 121, 122, 123, 124, 125, 126 and 128  
 12 of Lafayette Parish; Precincts 41, 42 and 43 of St. Landry Parish and Precincts  
 13 1, 2, 5A, 6, 7A-1, 7B, 8B, 9, 10A, 11, 12, 14, 16, 18, 19A, 19A-1, 19B, 20A-2,  
 14 20B-1, 21, 21A, 23, 24, 25, 25A, 26, 26A, 28, 29, 32B, 34, 34A, 35, 36A-1, 37, 38,  
 15 39, 40, 41, 42A, 42B, 44, 45A, 46A, 46B-1, 46B-2, 46B-3, 46B-4, 50A, 51, 57A and  
 16 57B of Vermilion Parish.

17 (8) District 8 is composed of Precincts 30, 36, 37, 39, 42, 44, 45, 47, 48,  
 18 50, 51, 52, 54, 55, 57 and 65 of Ascension Parish; Avoyelles Parish; Precincts  
 19 1-1, 1-2, 1-3, 1-4, 1-5, 1-6, 1-10, 1-11, 1-13, 1-14, 1-15, 1-16, 1-17, 1-18, 1-19, 1-20,  
 20 1-21, 1-22, 1-23, 1-24, 1-25, 1-26, 1-27, 1-28, 1-29, 1-30, 1-31, 1-32, 1-36, 1-37,  
 21 1-38, 1-45, 1-50, 1-51, 1-54, 1-58, 1-59, 1-61, 1-62, 1-63, 1-66, 1-67, 1-70, 1-71,  
 22 1-73, 1-77, 1-78, 1-81, 1-82, 1-83, 1-84, 1-85, 1-86, 1-87, 1-88, 1-91, 1-92, 1-93,  
 23 1-94, 1-95, 1-97, 1-100, 1-101, 1-104, 1-107, 2-1, 2-2, 2-3, 2-4, 2-5, 2-9, 2-10, 2-11,  
 24 2-12, 2-13, 2-14, 2-15, 2-16, 2-17, 2-19, 2-20, 2-22, 2-23, 2-24, 2-25, 2-27, 2-28,  
 25 2-30, 2-31, 2-32, 2-37, 3-5, 3-8, 3-12, 3-21, 3-23, 3-24, 3-44, 3-50, 3-54, 3-55, 3-57,  
 26 3-65 and 3-69 of East Baton Rouge Parish; East Feliciana Parish; Precincts  
 27 1010, 1030, 1080, 1081, 1090, 1100, 1101, 1110, 1120, 1160, 1162, 1170, 1171,  
 28 3020, 3030, 3032, 3050, 3051 and 3060 of Evangeline Parish; Precincts 1, 3, 6, 7,  
 29 9, 10, 11, 12, 13, 13C, 14, 14A, 15, 15B, 16, 17, 18, 19, 20, 21, 22, 23, 24, 31 and

1           32 of Iberville Parish; Precincts 5, 7, 14, 15, 16, 17, 18, 19, 20, 21, 22, 23, 24, 51,  
 2           52, 53, 54, 55, 56, 57, 58, 59, 60, 61, 62, 63, 64, 68 and 112 of Lafayette Parish;  
 3           Precincts 1, 2, 3, 4, 5, 6, 7, 8, 9, 10, 11 and 12 of Pointe Coupee Parish; St.  
 4           Helena Parish; Precincts 1, 2, 3, 4, 5, 6, 8, 9, 10, 11, 12, 18, 19, 20, 21, 22, 23, 24,  
 5           25, 26, 27, 28, 32, 33, 34, 35, 36, 37, 38, 44, 45, 46, 47, 48, 49, 50, 51 and 52 of St.  
 6           Landry Parish; Precincts 7, 8, 9, 10, 14, 17, 18, 23 and 26 of St. Martin Parish;  
 7           Precincts 1, 2, 6, 11, 15, 16, 17, 18, 26, 27, 33, 40, 40A, 41, 42, 42A, 43, 45, 45A,  
 8           46, 47, 101, 105, 107, 109, 111A, 115B, 117, 121, 121A, 123, 125, 127, 127A, 129,  
 9           129A and 133 of Tangipahoa Parish; West Baton Rouge Parish and West  
 10           Feliciana Parish.

11           Section 2. R.S. 17:2.1 is hereby repealed.

12           Section 3.(A) The precincts referenced in this Act are those precincts identified as  
 13           Voting Districts (VTDs) in the 2020 Census Redistricting TIGER/Line Shapefiles for the  
 14           State of Louisiana as validated through the data verification program of the Louisiana House  
 15           of Representatives and the Louisiana Senate and available on the legislature's website on the  
 16           effective date of this Section.

17           (B) When a precinct referenced in this Act has been subdivided by action of the  
 18           parish governing authority on a nongeographic basis or subdivided by action of the parish  
 19           governing authority on a geographic basis in accordance with the provisions of R.S.  
 20           18:532.1, the enumeration in this Act of the general precinct designation shall include all  
 21           nongeographic and all geographic subdivisions thereof, however such subdivisions may be  
 22           designated.

23           (C) The territorial limits of the districts as provided in this Act shall continue in  
 24           effect until changed by law regardless of any subsequent change made to the precincts by  
 25           the parish governing authority.

26           Section 4.(A) Solely for the purposes of qualifying for election and the election of  
 27           members of the State Board of Elementary and Secondary Education at the regularly  
 28           scheduled elections in 2023, the provisions of Section 1 of this Act shall become effective  
 29           upon signature of this Act by the governor or, if not signed by the governor, upon expiration

1 of the time for bills to become law without signature by the governor, as provided in Article  
 2 III, Section 18 of the Constitution of Louisiana. If this Act is vetoed by the governor and  
 3 subsequently approved by the legislature, the provisions of Section 1 of this Act shall  
 4 become effective on the day following such approval for the purposes established in this  
 5 Subsection.

6 (B) The provisions of Section 1 of this Act shall be effective for all other purposes  
 7 at noon on January 8, 2024.

8 (C) Section 2 of this Act shall become effective at noon on January 8, 2024.

9 (D) The provisions of this Section and Section 3 of this Act shall become effective  
 10 upon signature of this Act by the governor or, if not signed by the governor, upon expiration  
 11 of the time for bills to become law without signature by the governor, as provided in Article  
 12 III, Section 18 of the Constitution of Louisiana. If this Act is vetoed by the governor and  
 13 subsequently approved by the legislature, the provisions of this Section and Section 3 of this  
 14 Act shall become effective on the day following such approval.

---

The original instrument and the following digest, which constitutes no part  
 of the legislative instrument, were prepared by Matthew R. DeVille.

---

#### DIGEST

SB 21 Original

2022 First Extraordinary Session

Barrow

Present constitution (Const. Art. VIII, §3(B)) provides that BESE is composed of 11 members, eight of whom are elected from single-member districts and three of whom are appointed by the governor from the state at large.

Proposed law redraws district boundaries for the eight BESE districts, effective upon signature of the governor or lapse of time for gubernatorial action for purposes of the 2023 election.

Proposed law retains present districts until noon, January 8, 2024, at which time present law is repealed and proposed districts are effective for all other purposes.

Proposed law specifies that precincts referenced in district descriptions are those precincts identified as Voting Districts (VTDs) in the 2020 Census Redistricting TIGER/Line Shapefiles for the state of La. as validated through the data verification program of the La. legislature. Also specifies that if any such precinct has been subdivided by action of the parish governing authority on a nongeographic basis or subdivided by action of the parish governing authority on a geographic basis in accordance with present law, the enumeration of the general precinct designation shall include all nongeographic and all geographic subdivisions thereof. Further provides that the territorial limits of the districts as enacted shall continue in effect until changed by law regardless of any subsequent change made to the precincts by the parish governing authority.

Population data in the summaries accompanying this digest are derived from 2020 Census



Redistricting Data (Public Law 94-171), Summary File for Louisiana. Population data, statistical information, and maps are supplied for purposes of information and analysis and comprise no part of proposed law.

Effective for election purposes only for the regular BESE elections in 2023; effective for all other purposes at noon, January 8, 2024.

(Adds R.S. 17:2.2; repeals R.S. 17:2.1)

# Plan Statistics

## Plan: SLS 221ES-36 by Barrow

<u>Districts:</u>	<u># of Members</u>	<u>Actual Population</u>	<u>Ideal Population</u>	<u>Absolute Deviation</u>	<u>Relative Deviation</u>
District 1	1	597,554	582,219	15,335	2.634%
District 2	1	566,856	582,219	-15,363	-2.639%
District 3	1	576,041	582,219	-6,178	-1.061%
District 4	1	596,743	582,219	14,524	2.495%
District 5	1	557,693	582,219	-24,526	-4.213%
District 6	1	604,145	582,219	21,926	3.766%
District 7	1	598,589	582,219	16,370	2.812%
District 8	1	560,136	582,219	-22,083	-3.793%

---

Grand Total:	8	4,657,757	4,657,752
--------------	---	-----------	-----------

---

Ideal Population Per Member:	582219			
Number of Districts for Plan Type:	8			
Range of District Populations:	557,693	to	604,145	
Absolute Mean Deviation:	5,806			
Absolute Range:	-24,526	to	21,926	
Absolute Overall Range:	46,452			
Relative Mean Deviation:	2.93%			
Relative Range:	-4.21%	to	3.77%	
Relative Overall Range:	7.98%			

---

<b><i>Ideal - Actual:</i></b>	<b><i>-5</i></b>
<b><i>Remainder:</i></b>	<b><i>5</i></b>
<b><i>Unassigned Population:</i></b>	<b><i>0</i></b>

# Total Population

Plan: SLS 221ES-36 by Barrow

	Total Population	Total White	Total Black	Total Asian	Total American Indian	Total Other	Total Hispanic	VAP Total	VAP White	VAP Black	VAP Asian	VAP American Indian	VAP Other	VAP Hispanic Total
District 1	597,554	417,412	85,284	21,628	11,176	62,054	77,788	470,388	339,528	61,352	16,155	8,397	44,956	55,961
	100.000%	69.853%	14.272%	3.619%	1.870%	10.385%	13.018%	100.000%	72.180%	13.043%	3.434%	1.785%	9.557%	11.897%
District 2	566,856	166,687	338,540	17,493	5,956	38,180	49,901	440,191	141,266	253,024	14,016	4,625	27,260	34,771
	100.000%	29.406%	59.722%	3.086%	1.051%	6.735%	8.803%	100.000%	32.092%	57.481%	3.184%	1.051%	6.193%	7.899%
District 3	576,041	367,476	136,292	13,985	20,125	38,163	46,529	434,915	290,331	94,719	10,160	13,815	25,890	30,840
	100.000%	63.793%	23.660%	2.428%	3.494%	6.625%	8.077%	100.000%	66.756%	21.779%	2.336%	3.176%	5.953%	7.091%
District 4	596,743	414,583	133,165	9,007	16,509	23,479	28,501	458,818	326,392	96,289	6,610	12,333	17,194	20,104
	100.000%	69.474%	22.315%	1.509%	2.767%	3.935%	4.776%	100.000%	71.138%	20.986%	1.441%	2.688%	3.747%	4.382%
District 5	557,693	242,209	281,582	8,565	7,926	17,411	20,892	423,959	196,619	202,325	6,460	6,188	12,367	14,457
	100.000%	43.431%	50.491%	1.536%	1.421%	3.122%	3.746%	100.000%	46.377%	47.723%	1.524%	1.460%	2.917%	3.410%
District 6	604,145	430,119	113,783	16,306	10,418	33,519	38,458	461,614	338,408	80,315	11,902	7,844	23,145	25,832
	100.000%	71.195%	18.834%	2.699%	1.724%	5.548%	6.366%	100.000%	73.310%	17.399%	2.578%	1.699%	5.014%	5.596%
District 7	598,589	423,378	126,827	12,526	9,730	26,128	31,991	452,605	329,938	88,378	9,061	7,154	18,074	21,820
	100.000%	70.729%	21.188%	2.093%	1.625%	4.365%	5.344%	100.000%	72.898%	19.527%	2.002%	1.581%	3.993%	4.821%
District 8	560,136	195,788	327,646	7,778	5,220	23,704	28,489	428,058	162,029	239,367	6,052	3,884	16,726	19,877
	100.000%	34.954%	58.494%	1.389%	0.932%	4.232%	5.086%	100.000%	37.852%	55.919%	1.414%	0.907%	3.907%	4.644%
Grand Total	4,657,757	2,657,652	1,543,119	107,288	87,060	262,638	322,549	3,570,548	2,124,511	1,115,769	80,416	64,240	185,612	223,662
	100.000%	57.059%	33.130%	2.303%	1.869%	5.639%	6.925%	100.000%	59.501%	31.249%	2.252%	1.799%	5.198%	6.264%

# Voter Registration

Plan: SLS 221ES-36 by Barrow

	Reg Total Dec 2021	Reg White Dec 2021	Reg Black Dec 2021	Reg Other Dec 2021	Reg Dem Total Dec 2021	Reg Rep Total Dec 2021	Reg Other Total Dec 2021
District 1	387,271	308,633	41,740	36,898	106,596	163,697	116,978
	82.330%	79.694%	10.778%	9.528%	27.525%	42.269%	30.206%
District 2	369,259	118,714	220,397	30,148	233,614	43,881	91,764
	83.886%	32.149%	59.686%	8.164%	63.266%	11.884%	24.851%
District 3	348,945	253,396	73,635	21,914	122,933	127,797	98,215
	80.233%	72.618%	21.102%	6.280%	35.230%	36.624%	28.146%
District 4	367,785	278,412	74,617	14,756	113,427	161,976	92,382
	80.159%	75.700%	20.288%	4.012%	30.841%	44.041%	25.118%
District 5	343,597	164,983	165,918	12,696	161,943	98,769	82,885
	81.045%	48.016%	48.289%	3.695%	47.132%	28.746%	24.123%
District 6	372,034	294,778	57,946	19,310	104,983	163,445	103,606
	80.594%	79.234%	15.575%	5.190%	28.219%	43.933%	27.849%
District 7	362,030	281,214	65,034	15,782	116,912	145,092	100,026
	79.988%	77.677%	17.964%	4.359%	32.293%	40.077%	27.629%
District 8	343,425	127,859	203,461	12,105	200,596	64,123	78,706
	80.229%	37.231%	59.245%	3.525%	58.410%	18.672%	22.918%
Grand Total	2,894,346	1,827,989	902,748	163,609	1,161,004	968,780	764,562

# Splits

## Plan: SLS 221ES-36 by Barrow

	Total Population	Total White	Total Black	Total Asian	Total American Indian	Total Other	VAP Total	VAP White	VAP Black	VAP Asian	VAP American Indian	VAP Other	Reg Total Dec 2021	Reg White Dec 2021	Reg Black Dec 2021	Reg Other Dec 2021
District 1																
*Jefferson	260,747	165,581	37,395	13,449	4,612	39,710	209,367	139,259	27,398	10,231	3,533	28,946	159,887	123,228	15,973	20,686
*Orleans	57,113	45,328	4,810	2,308	647	4,020	47,153	37,718	4,065	1,781	516	3,073	39,113	32,920	2,145	4,048
St. Tammany	264,570	196,641	38,643	5,774	5,660	17,852	202,228	154,621	26,761	4,075	4,161	12,610	178,779	145,724	21,142	11,913
*Washington	15,124	9,862	4,436	97	257	472	11,640	7,930	3,128	68	187	327	9,492	6,761	2,480	251
District 1	597,554	417,412	85,284	21,628	11,176	62,054	470,388	339,528	61,352	16,155	8,397	44,956	387,271	308,633	41,740	36,898
	100.000%	69.853%	14.272%	3.619%	1.870%	10.385%	100.000%	72.180%	13.043%	3.434%	1.785%	9.557%	82.330%	79.694%	10.778%	9.528%
District 2																
*Assumption	9,701	4,158	5,201	38	76	228	7,552	3,318	3,977	19	60	178	7,034	2,932	4,003	99
*Jefferson	115,278	24,183	70,313	5,607	1,397	13,778	86,233	19,912	51,436	4,375	1,059	9,451	66,350	15,052	43,482	7,816
*Orleans	326,884	81,134	214,159	10,548	3,019	18,024	259,043	72,534	162,003	8,739	2,432	13,335	217,131	59,066	139,380	18,685
St. Charles	52,549	33,550	13,928	837	925	3,309	39,541	26,154	9,890	529	667	2,301	34,985	24,309	8,797	1,879
St. James	20,192	9,973	9,762	60	82	315	15,505	7,883	7,297	31	64	230	14,966	7,254	7,501	211
*St. John the Baptist	42,252	13,689	25,177	403	457	2,526	32,317	11,465	18,421	323	343	1,765	28,793	10,101	17,234	1,458
District 2	566,856	166,687	338,540	17,493	5,956	38,180	440,191	141,266	253,024	14,016	4,625	27,260	369,259	118,714	220,397	30,148
	100.000%	29.406%	59.722%	3.086%	1.051%	6.735%	100.000%	32.092%	57.481%	3.184%	1.051%	6.193%	83.886%	32.149%	59.686%	8.164%
District 3																
*Ascension	873	432	352	2	9	78	696	365	256	2	8	65	588	348	221	19
*Assumption	11,338	9,564	1,019	58	182	515	9,064	7,827	730	38	137	332	7,405	6,768	507	130
Iberia	69,929	39,206	24,556	2,123	794	3,250	52,791	31,295	17,069	1,562	581	2,284	44,526	28,287	14,352	1,887
*Iberville	5,513	4,718	574	18	88	115	4,474	3,868	431	13	74	88	4,094	3,550	468	76
*Jefferson	64,756	31,171	18,509	3,968	1,677	9,431	49,054	24,964	13,341	3,086	1,243	6,420	36,864	21,336	10,121	5,407
*Lafayette	31,479	23,410	5,115	872	471	1,611	22,895	17,537	3,385	536	342	1,095	19,609	15,976	2,557	1,076
Lafourche	97,557	71,710	15,855	1,025	4,224	4,743	74,619	56,838	11,077	738	2,777	3,189	58,278	48,467	7,164	2,647
Plaquemines	23,515	14,287	5,428	1,317	697	1,786	17,334	10,856	3,857	925	500	1,196	13,908	9,513	3,134	1,261
*Pointe Coupee	10,466	8,202	1,800	37	104	323	8,287	6,631	1,309	30	84	233	7,310	6,068	1,099	143
St. Bernard	43,764	24,497	12,309	1,381	947	4,630	31,775	18,992	7,944	982	688	3,169	25,653	18,233	5,497	1,923
*St. John the Baptist	225	188	19	0	8	10	186	157	16	0	7	6	120	118	0	2
*St. Landry	16,838	12,917	3,403	87	160	271	12,761	10,013	2,416	59	104	169	11,619	9,224	2,121	274
*St. Martin	34,198	24,588	7,714	455	363	1,078	26,006	19,410	5,258	312	280	746	23,069	17,823	4,648	598
St. Mary	49,406	26,949	15,991	835	1,670	3,961	37,521	21,594	11,520	593	1,173	2,641	30,210	18,712	9,891	1,607
Terrebonne	109,580	69,934	23,147	1,743	8,637	6,119	82,505	55,631	15,796	1,239	5,750	4,089	61,720	45,395	11,566	4,759
*Vermilion	6,604	5,703	501	64	94	242	4,947	4,353	314	45	67	168	3,972	3,578	289	105
District 3	576,041	367,476	136,292	13,985	20,125	38,163	434,915	290,331	94,719	10,160	13,815	25,890	348,945	253,396	73,635	21,914
	100.000%	63.793%	23.660%	2.428%	3.494%	6.625%	100.000%	66.756%	21.779%	2.336%	3.176%	5.953%	80.233%	72.618%	21.102%	6.280%

# Splits

## Plan: SLS 221ES-36 by Barrow

	Total Population	Total White	Total Black	Total Asian	Total American Indian	Total Other	VAP Total	VAP White	VAP Black	VAP Asian	VAP American Indian	VAP Other	Reg Total Dec 2021	Reg White Dec 2021	Reg Black Dec 2021	Reg Other Dec 2021
District 4																
*Bienville	4,914	3,705	999	43	109	58	3,757	2,822	796	24	78	37	3,253	2,497	725	31
*Bossier	92,703	67,369	15,877	2,346	2,576	4,535	69,341	51,498	11,344	1,585	1,930	2,984	55,210	44,005	8,290	2,915
*Caddo	43,960	31,578	9,131	336	1,340	1,575	34,433	25,377	6,779	235	993	1,049	28,435	21,596	5,763	1,076
Caldwell	9,645	7,646	1,632	51	150	166	7,478	5,969	1,224	46	116	123	6,031	5,124	818	89
Catahoula	8,906	5,776	2,395	46	119	570	6,951	4,557	1,736	33	87	538	6,467	4,639	1,770	58
*Claiborne	8,638	5,338	2,923	51	120	206	7,261	4,682	2,285	28	91	175	4,805	3,190	1,543	72
Concordia	18,687	10,275	7,725	122	233	332	14,217	8,108	5,613	100	167	229	11,964	7,222	4,540	202
*De Soto	13,981	10,897	2,116	52	456	460	10,574	8,341	1,569	36	346	282	9,984	8,146	1,526	312
*Evangeline	21,174	16,783	2,917	158	208	1,108	16,053	12,782	2,004	124	169	974	13,285	11,430	1,625	230
Grant	22,169	17,709	3,335	133	644	348	17,527	13,964	2,717	97	507	242	12,688	11,174	1,176	338
*Jackson	10,449	7,970	1,805	138	157	379	8,219	6,394	1,283	118	109	315	6,143	5,148	875	120
La Salle	14,791	11,348	1,422	283	372	1,366	11,563	8,636	1,065	264	271	1,327	8,792	7,978	637	177
*Lincoln	27,482	20,807	4,618	626	461	970	22,115	16,975	3,630	507	366	637	15,495	12,901	2,043	551
*Morehouse	8,679	6,666	1,625	59	193	136	6,944	5,392	1,262	40	133	117	6,376	5,007	1,250	119
*Natchitoches	23,550	16,115	5,697	187	706	845	18,549	13,043	4,165	137	564	640	15,842	11,582	3,488	772
Rapides	130,023	77,510	42,592	2,428	3,102	4,391	98,792	61,373	30,205	1,786	2,334	3,094	80,176	52,832	23,775	3,569
*Red River	3,771	3,067	514	10	118	62	2,890	2,425	339	2	75	49	2,670	2,316	314	40
Sabine	22,155	15,036	3,861	94	2,723	441	17,064	12,054	2,655	66	1,970	319	14,547	11,023	2,184	1,340
Union	21,107	14,460	5,224	62	338	1,023	16,632	11,807	3,861	39	254	671	15,221	11,066	3,692	463
Vernon	48,750	35,087	7,611	1,442	1,600	3,010	36,261	26,765	5,133	1,074	1,160	2,129	24,060	19,182	3,011	1,867
*Webster	17,703	12,953	3,994	103	341	312	13,759	10,273	2,919	79	270	218	10,897	8,453	2,240	204
West Carroll	9,751	7,894	1,425	27	180	225	7,532	6,223	1,010	20	136	143	7,038	5,913	1,040	85
Winn	13,755	8,594	3,727	210	263	961	10,906	6,932	2,695	170	207	902	8,406	5,988	2,292	126
District 4	596,743	414,583	133,165	9,007	16,509	23,479	458,818	326,392	96,289	6,610	12,333	17,194	367,785	278,412	74,617	14,756
	100.000%	69.474%	22.315%	1.509%	2.767%	3.935%	100.000%	71.138%	20.986%	1.441%	2.688%	3.747%	80.159%	75.700%	20.288%	4.012%
District 5																
*Bienville	8,067	3,245	4,601	14	98	109	6,316	2,664	3,488	6	84	74	5,594	2,346	3,192	56
*Bossier	36,043	13,683	16,674	1,146	697	3,843	26,535	11,433	11,096	863	547	2,596	14,533	6,856	6,548	1,129
*Caddo	193,888	71,879	110,173	3,698	2,500	5,638	147,974	59,682	79,580	2,773	1,965	3,974	122,861	51,517	65,486	5,858
*Claiborne	5,532	1,925	3,437	37	65	68	4,246	1,576	2,539	27	49	55	3,793	1,442	2,277	74
*De Soto	12,831	4,387	7,857	65	284	238	9,866	3,568	5,856	50	211	181	8,729	3,184	5,284	261
East Carroll	7,459	2,054	5,272	29	43	61	5,901	1,773	4,043	19	27	39	4,709	1,306	3,359	44
Franklin	19,774	12,492	6,802	70	205	205	15,028	9,901	4,779	44	153	151	13,159	9,015	4,034	110
*Jackson	4,582	1,997	2,361	37	98	89	3,564	1,573	1,842	22	65	62	3,306	1,499	1,735	72
*Lincoln	20,914	5,227	14,746	266	201	474	16,540	4,331	11,489	237	160	323	10,154	2,771	6,973	410

# Splits

## Plan: SLS 221ES-36 by Barrow

	Total Population	Total White	Total Black	Total Asian	Total American Indian	Total Other	VAP Total	VAP White	VAP Black	VAP Asian	VAP American Indian	VAP Other	Reg Total Dec 2021	Reg White Dec 2021	Reg Black Dec 2021	Reg Other Dec 2021
District 5																
Madison	10,017	3,475	6,363	20	59	100	7,435	2,906	4,391	9	48	81	7,278	2,494	4,674	110
*Morehouse	16,950	5,615	10,859	101	177	198	13,118	4,703	8,038	77	146	154	10,546	3,498	6,881	167
*Natchitoches	13,965	3,246	10,028	68	155	468	10,800	2,967	7,250	61	119	403	7,265	1,268	5,736	261
Ouachita	160,368	88,545	61,217	2,788	2,661	5,157	120,200	69,974	42,290	2,118	2,059	3,759	99,752	60,515	35,658	3,579
*Red River	3,849	1,128	2,592	15	53	61	2,824	913	1,825	1	41	44	2,961	814	2,104	43
Richland	20,043	11,785	7,603	83	258	314	15,383	9,338	5,546	66	203	230	13,662	8,470	4,961	231
Tensas	4,147	1,744	2,312	23	26	42	3,235	1,446	1,728	12	23	26	3,455	1,503	1,917	35
*Webster	19,264	9,782	8,685	105	346	346	14,994	7,871	6,545	75	288	215	11,840	6,485	5,099	256
District 5	557,693	242,209	281,582	8,565	7,926	17,411	423,959	196,619	202,325	6,460	6,188	12,367	343,597	164,983	165,918	12,696
	100.000%	43.431%	50.491%	1.536%	1.421%	3.122%	100.000%	46.377%	47.723%	1.524%	1.460%	2.917%	81.045%	48.016%	48.289%	3.695%
District 6																
*Ascension	105,608	75,516	18,374	2,160	1,834	7,224	76,531	56,464	12,373	1,410	1,277	5,007	66,737	52,932	10,020	3,785
*East Baton Rouge	244,820	158,392	58,100	11,463	3,234	13,631	194,836	130,974	42,546	8,692	2,575	10,049	153,913	114,248	29,437	10,228
Livingston	142,282	116,855	12,658	1,697	3,111	7,961	105,141	88,432	8,136	1,099	2,311	5,163	84,568	76,062	5,425	3,081
*Tangipahoa	81,096	59,275	15,653	867	1,760	3,541	61,795	46,725	10,656	615	1,307	2,492	48,721	39,462	7,442	1,817
*Washington	30,339	20,081	8,998	119	479	662	23,311	15,813	6,604	86	374	434	18,095	12,074	5,622	399
District 6	604,145	430,119	113,783	16,306	10,418	33,519	461,614	338,408	80,315	11,902	7,844	23,145	372,034	294,778	57,946	19,310
	100.000%	71.195%	18.834%	2.699%	1.724%	5.548%	100.000%	73.310%	17.399%	2.578%	1.699%	5.014%	80.594%	79.234%	15.575%	5.190%
District 7																
Acadia	57,576	44,480	10,864	238	573	1,421	42,943	34,071	7,383	173	400	916	37,678	30,555	6,407	716
Allen	22,750	16,327	4,490	246	947	740	17,510	12,751	3,275	182	646	656	12,201	9,478	2,217	506
Beauregard	36,549	29,529	4,649	402	1,052	917	27,489	22,304	3,495	269	773	648	22,294	18,771	2,369	1,154
Calcasieu	216,785	139,772	59,386	4,702	3,536	9,389	163,166	108,789	41,898	3,359	2,604	6,516	120,511	85,659	29,513	5,339
Cameron	5,617	5,232	125	30	75	155	4,358	4,100	79	23	47	109	4,789	4,610	88	91
Jefferson Davis	32,250	25,066	5,837	183	472	692	24,039	19,121	4,006	111	325	476	20,013	16,350	3,202	461
*Lafayette	172,449	121,067	32,703	5,324	2,485	10,870	132,210	96,464	22,430	3,941	1,891	7,484	109,563	87,004	16,283	6,276
*St. Landry	3,858	3,131	464	18	61	184	2,825	2,328	339	11	47	100	2,184	1,860	250	74
*Vermilion	50,755	38,774	8,309	1,383	529	1,760	38,065	30,010	5,473	992	421	1,169	32,797	26,927	4,705	1,165
District 7	598,589	423,378	126,827	12,526	9,730	26,128	452,605	329,938	88,378	9,061	7,154	18,074	362,030	281,214	65,034	15,782
	100.000%	70.729%	21.188%	2.093%	1.625%	4.365%	100.000%	72.898%	19.527%	2.002%	1.581%	3.993%	79.988%	77.677%	17.964%	4.359%
District 8																
*Ascension	20,019	5,193	13,490	138	161	1,037	14,730	4,307	9,510	102	105	706	12,592	3,520	8,573	499
Avoyelles	39,693	25,625	11,678	434	767	1,189	30,578	20,269	8,311	379	570	1,049	23,426	16,534	6,294	598
*East Baton Rouge	211,961	37,677	155,298	4,962	1,493	12,531	160,776	32,907	114,244	3,907	1,172	8,546	125,351	23,984	95,238	6,129
East Feliciana	19,539	11,516	7,341	91	262	329	16,183	9,740	5,918	61	198	266	13,600	7,959	5,186	455

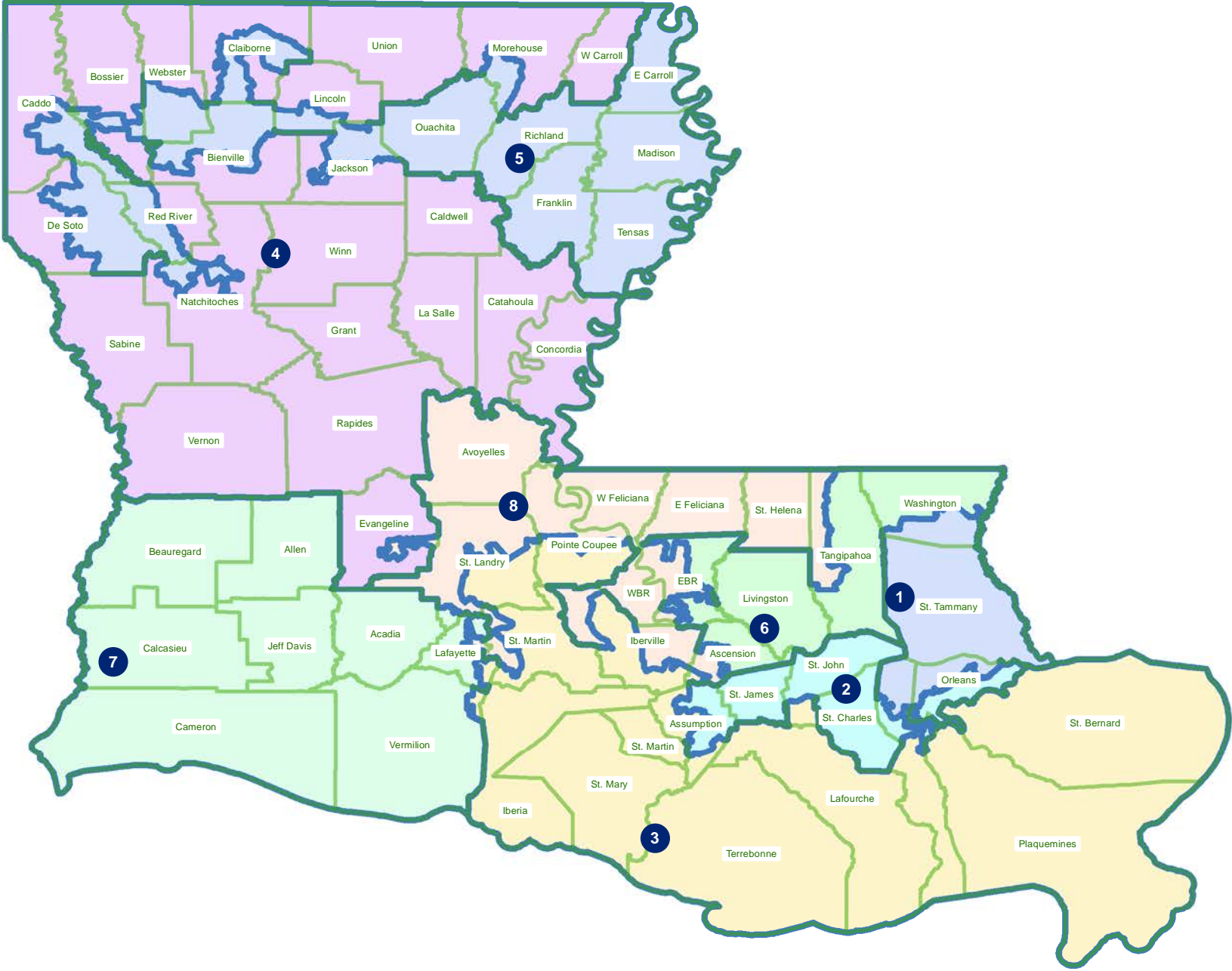
# Splits

Plan: SLS 221ES-36 by Barrow

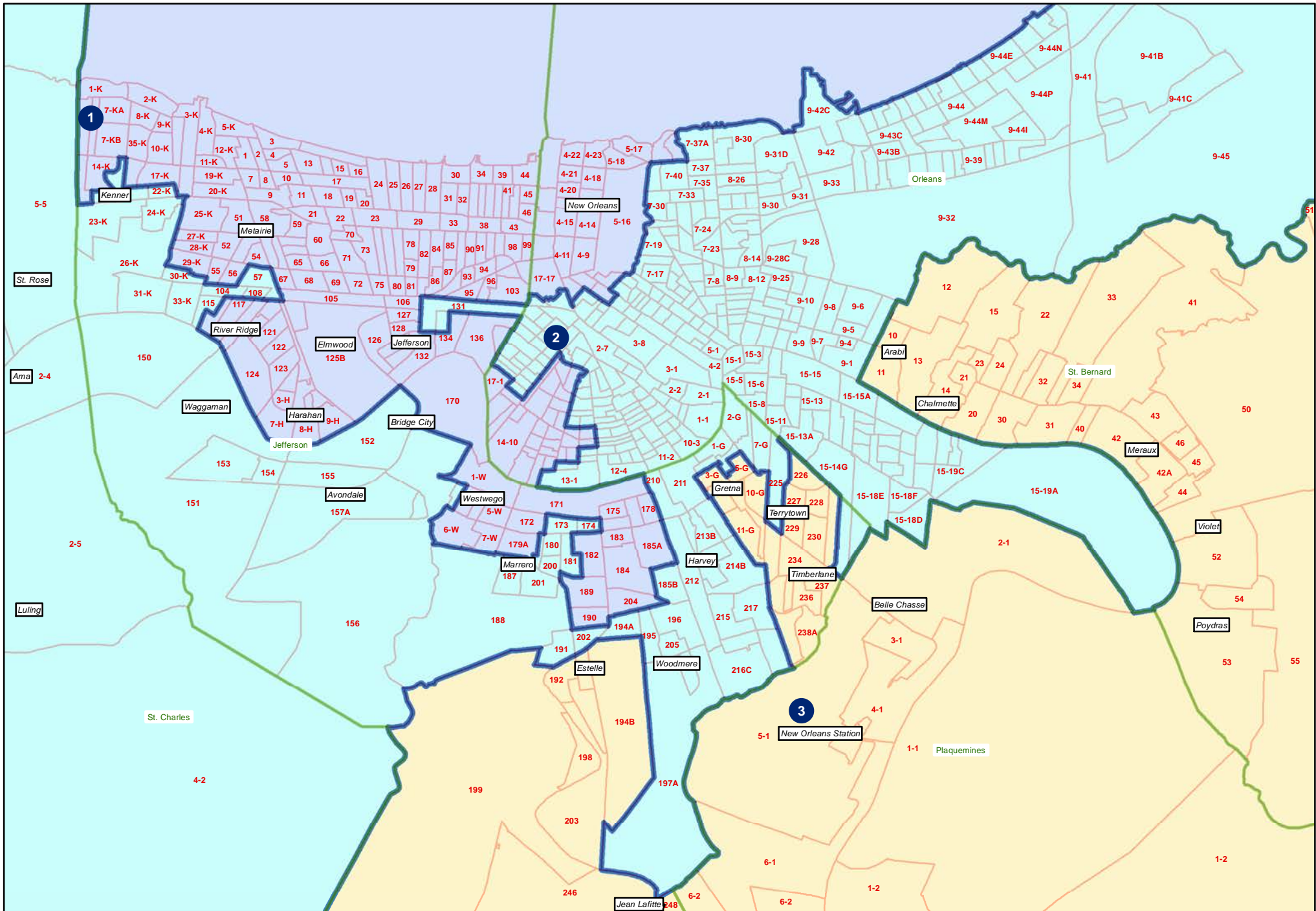
	Total Population	Total White	Total Black	Total Asian	Total American Indian	Total Other	VAP Total	VAP White	VAP Black	VAP Asian	VAP American Indian	VAP Other	Reg Total Dec 2021	Reg White Dec 2021	Reg Black Dec 2021	Reg Other Dec 2021
District 8																
*Evangeline	11,176	4,571	6,318	83	72	132	8,355	3,678	4,479	63	48	87	7,268	3,136	4,018	114
*Iberville	24,728	10,115	13,156	184	186	1,087	19,612	8,594	9,801	136	147	934	16,368	6,582	9,429	357
*Lafayette	37,825	8,886	27,318	258	254	1,109	28,770	7,607	20,102	187	154	720	24,321	5,665	17,641	1,015
*Pointe Coupee	10,292	4,193	5,704	70	55	270	7,963	3,477	4,193	61	35	197	7,365	3,252	4,022	91
St. Helena	10,920	4,527	6,031	39	134	189	8,463	3,805	4,371	28	109	150	8,321	3,628	4,565	128
*St. Landry	61,844	27,563	31,969	394	415	1,503	46,225	21,868	22,742	283	300	1,032	40,679	19,009	20,634	1,036
*St. Martin	17,569	8,671	8,207	142	176	373	13,398	6,868	6,035	95	133	267	12,051	6,111	5,733	207
*Tangipahoa	52,061	22,061	26,226	607	694	2,473	39,696	18,480	18,561	485	520	1,650	27,535	13,450	13,083	1,002
West Baton Rouge	27,199	14,307	11,170	287	326	1,109	20,526	11,146	8,149	209	219	803	17,141	9,937	6,865	339
West Feliciana	15,310	10,883	3,740	89	225	373	12,783	9,283	2,951	56	174	319	7,407	5,092	2,180	135
District 8	560,136	195,788	327,646	7,778	5,220	23,704	428,058	162,029	239,367	6,052	3,884	16,726	343,425	127,859	203,461	12,105
	100.000%	34.954%	58.494%	1.389%	0.932%	4.232%	100.000%	37.852%	55.919%	1.414%	0.907%	3.907%	80.229%	37.231%	59.245%	3.525%



SLS 221ES-36 by Barrow  
BESE Statewide

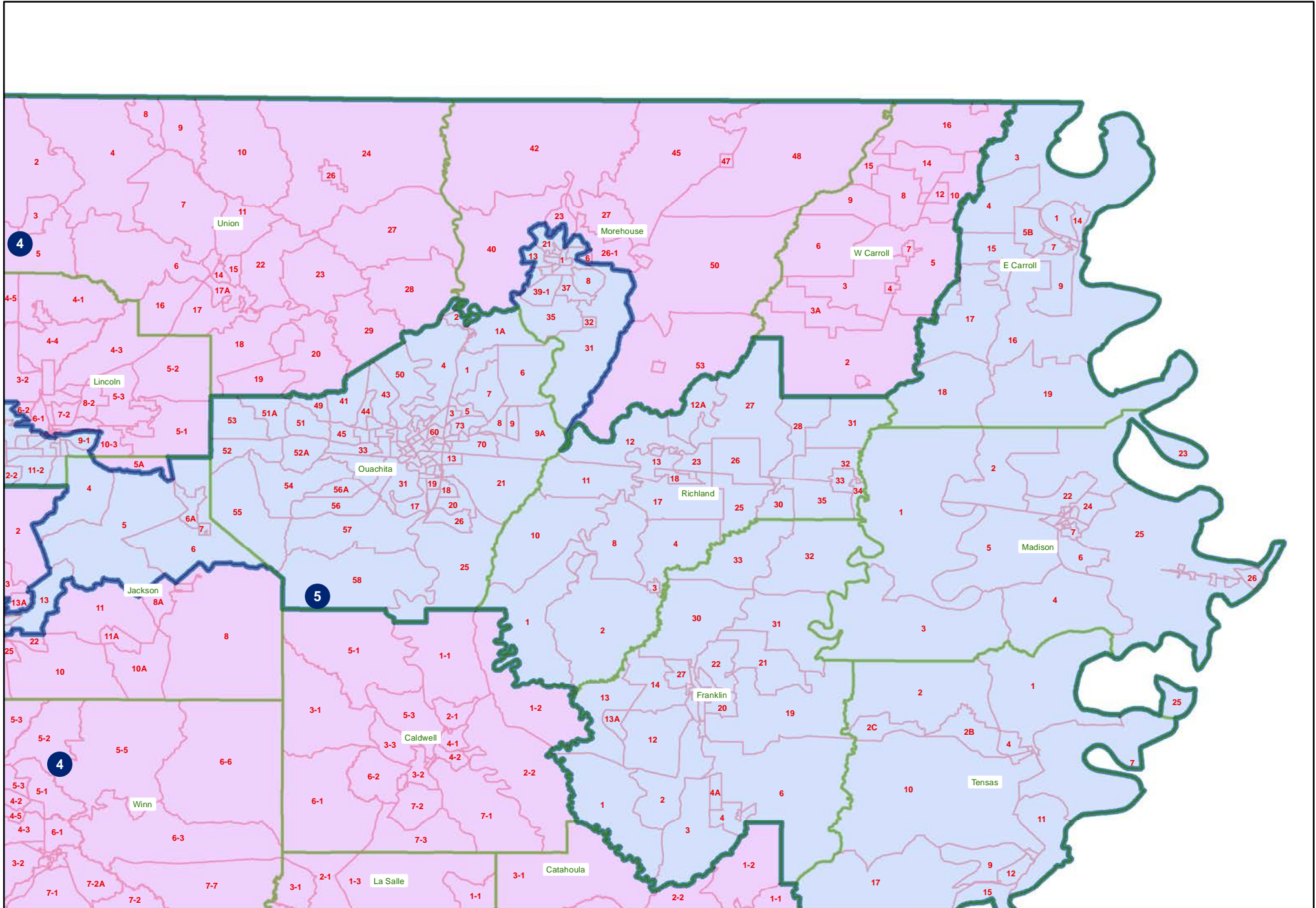


SLS 221ES-36 by Barrow  
BESE Orleans/Jefferson

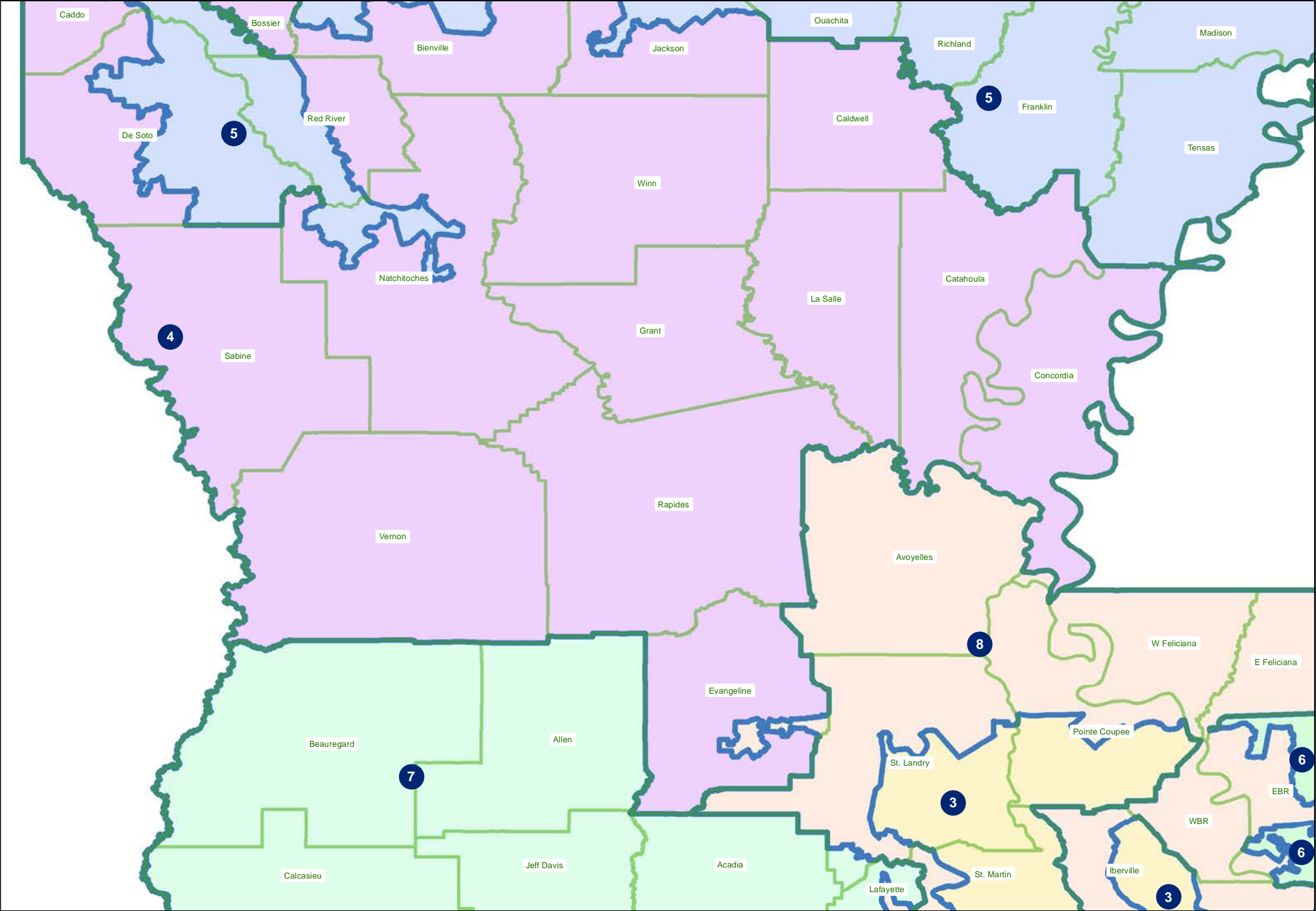




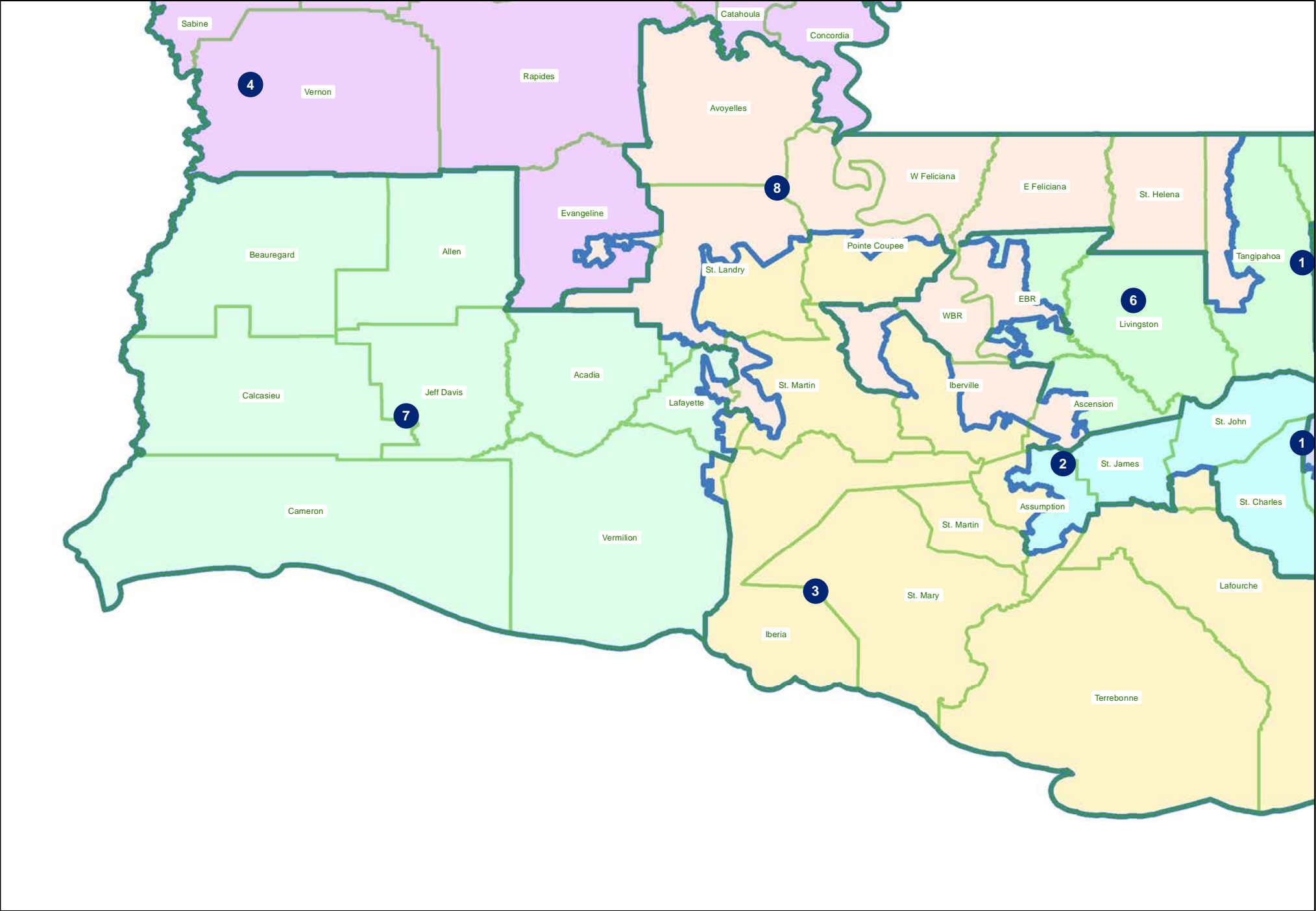
SLS 221ES-36 by Barrow  
BESE Northeast



SLS 221ES-36 by Barrow  
BESE Central

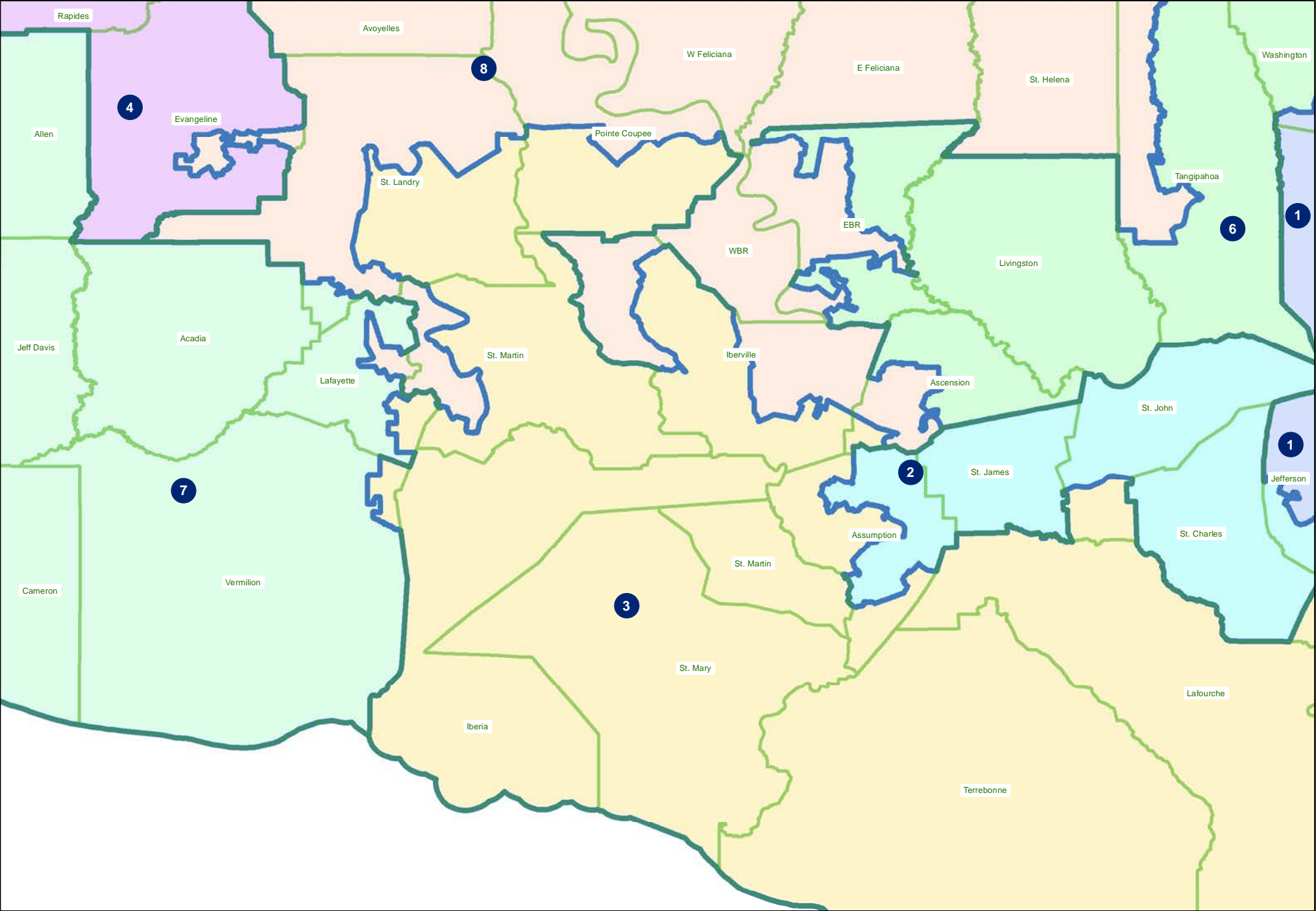


SLS 221ES-36 by Barrow  
BESE Southwest



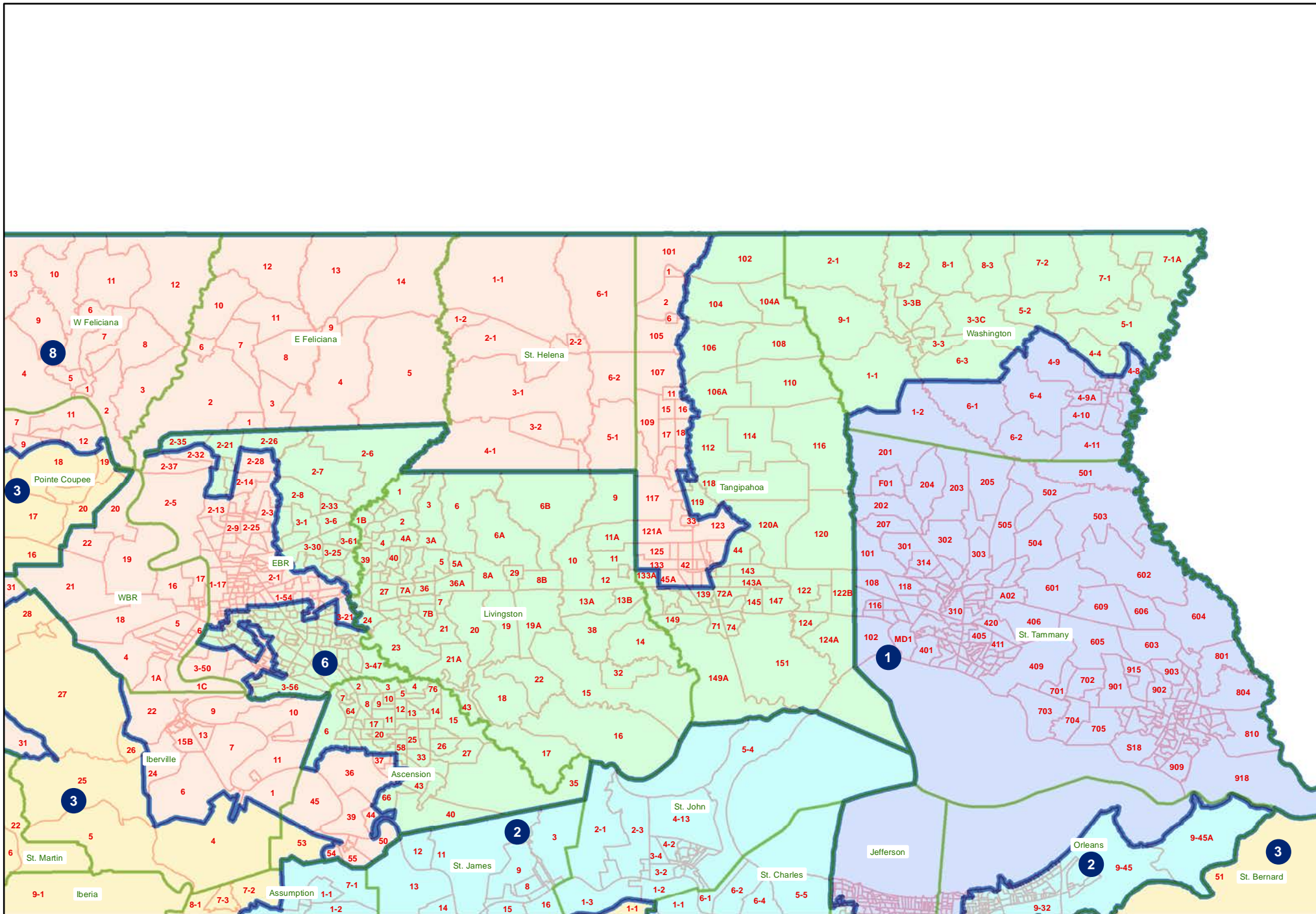


SLS 221ES-36 by Barrow  
BESE Acadiana/Bayou/River



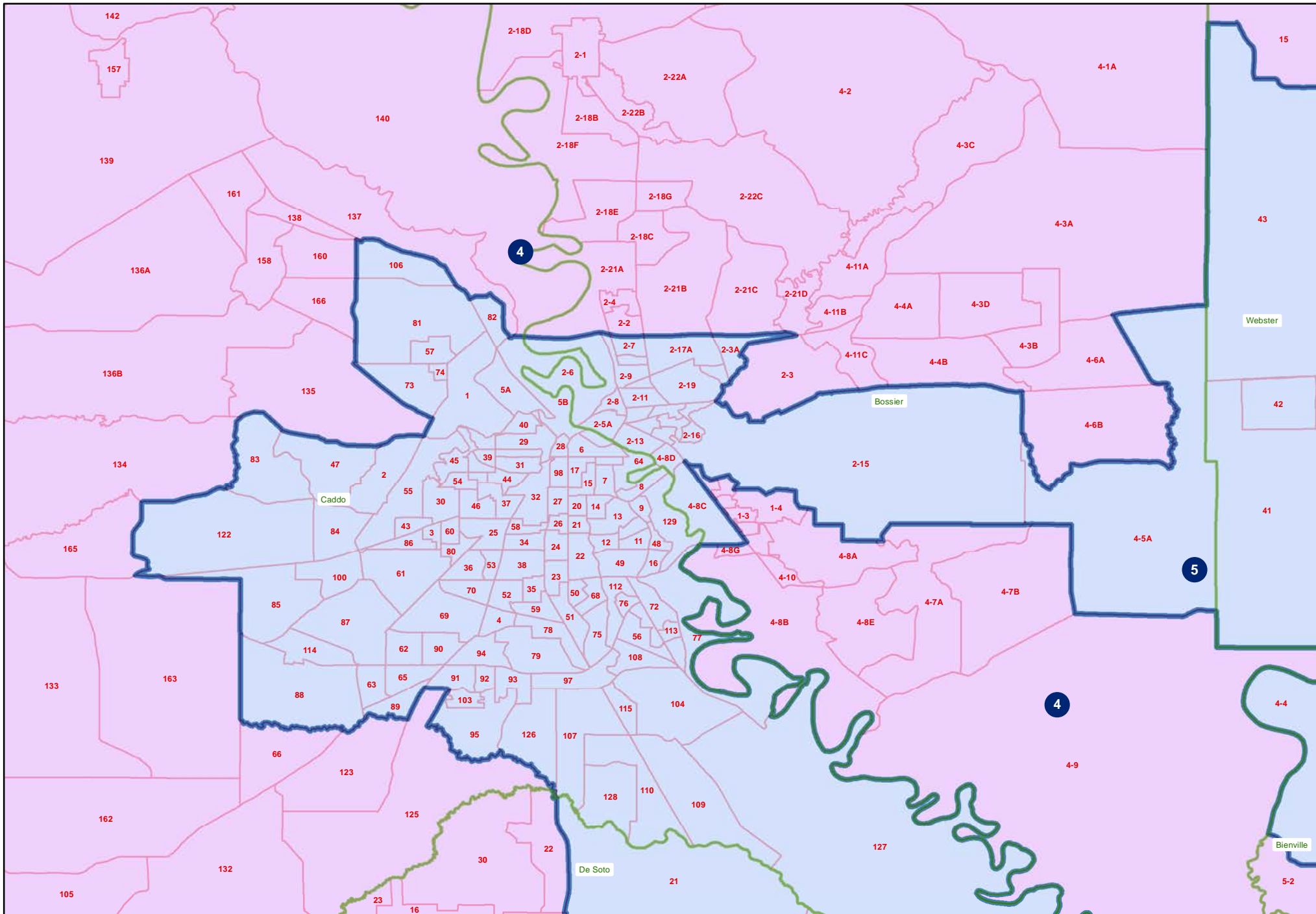
# SLS 221ES-36 by Barrow

## BESE Florida Parishes



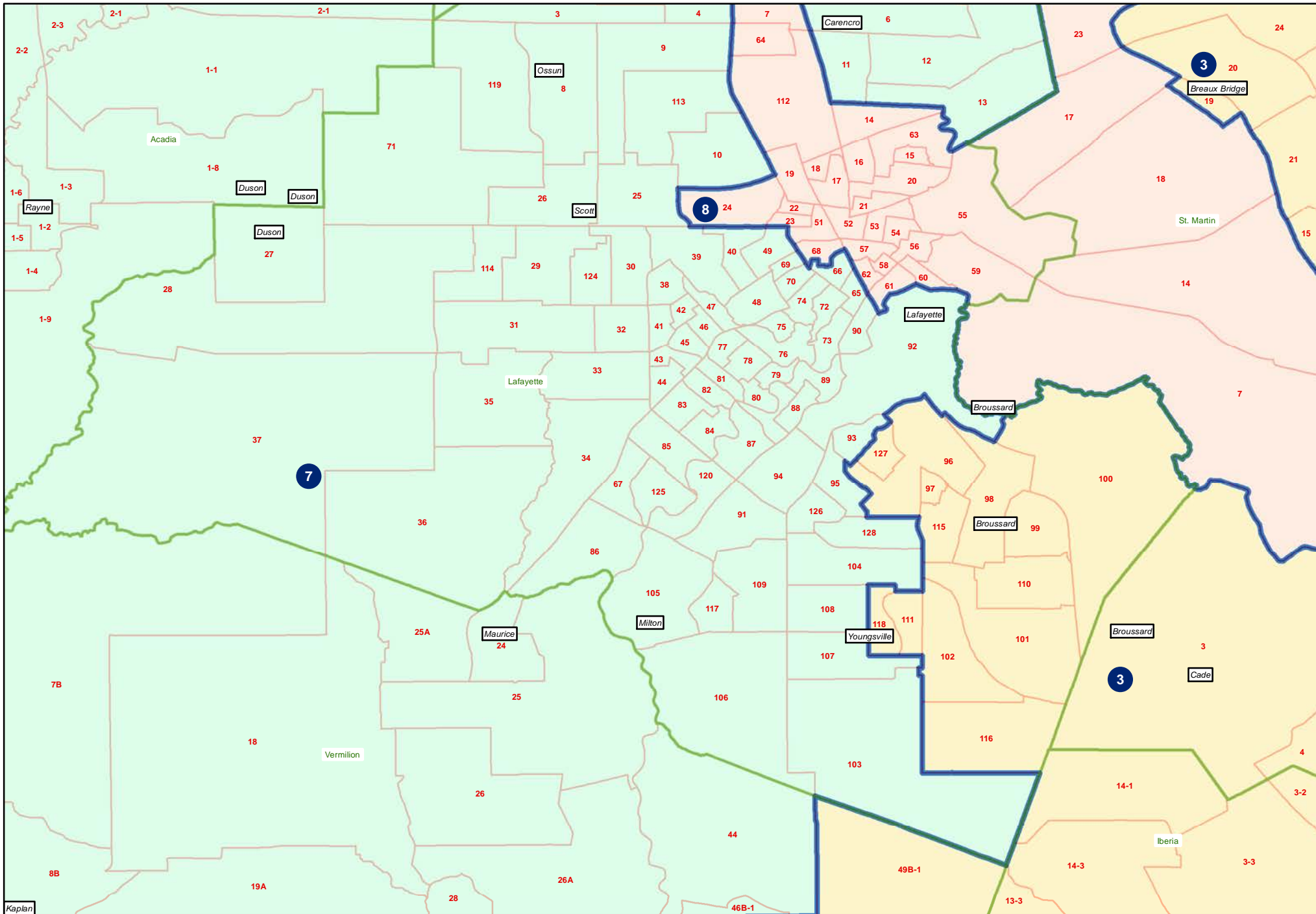


SLS 221ES-36 by Barrow  
BESE Shreveport



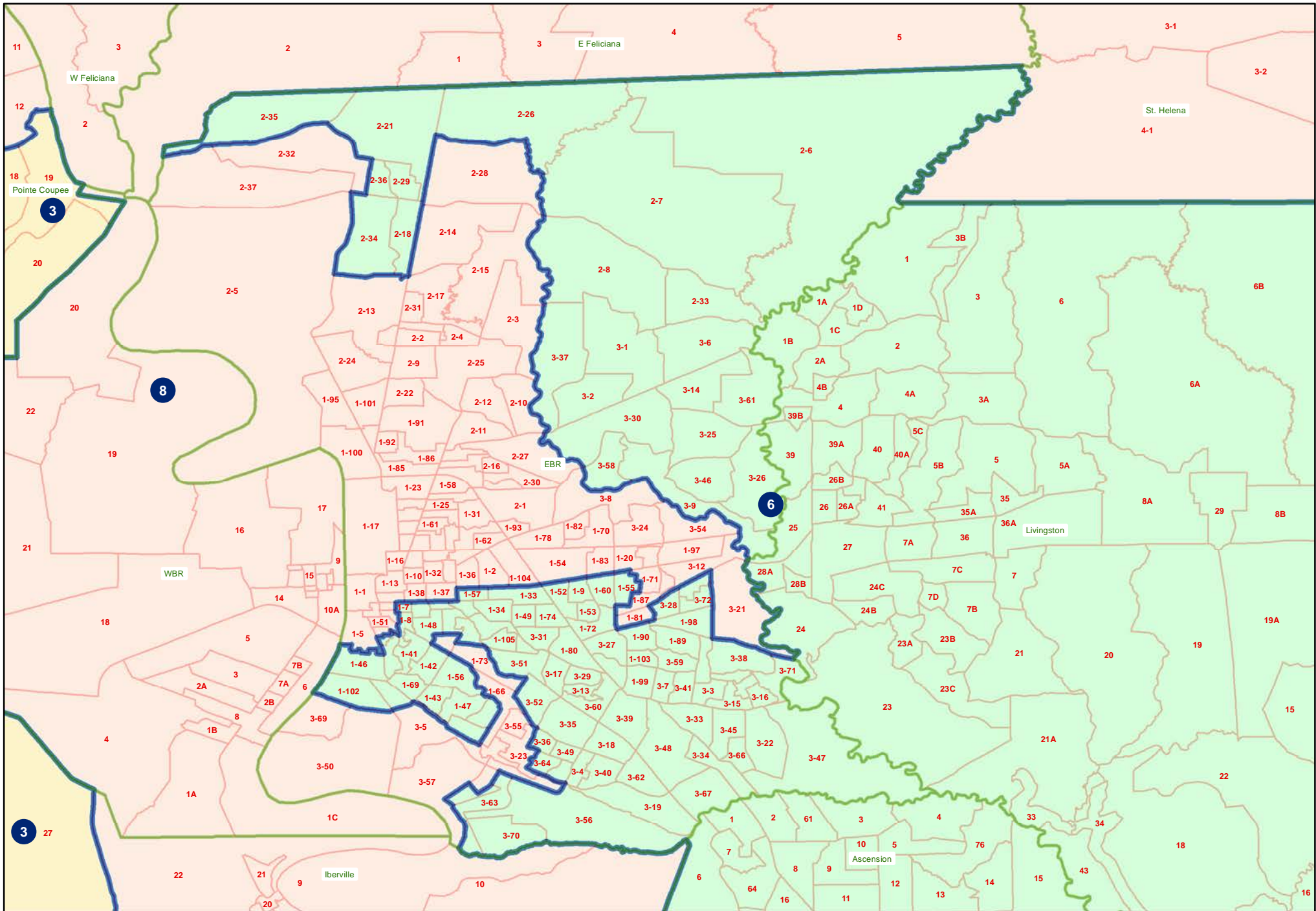


# SLS 221ES-36 by Barrow BESE Lafayette

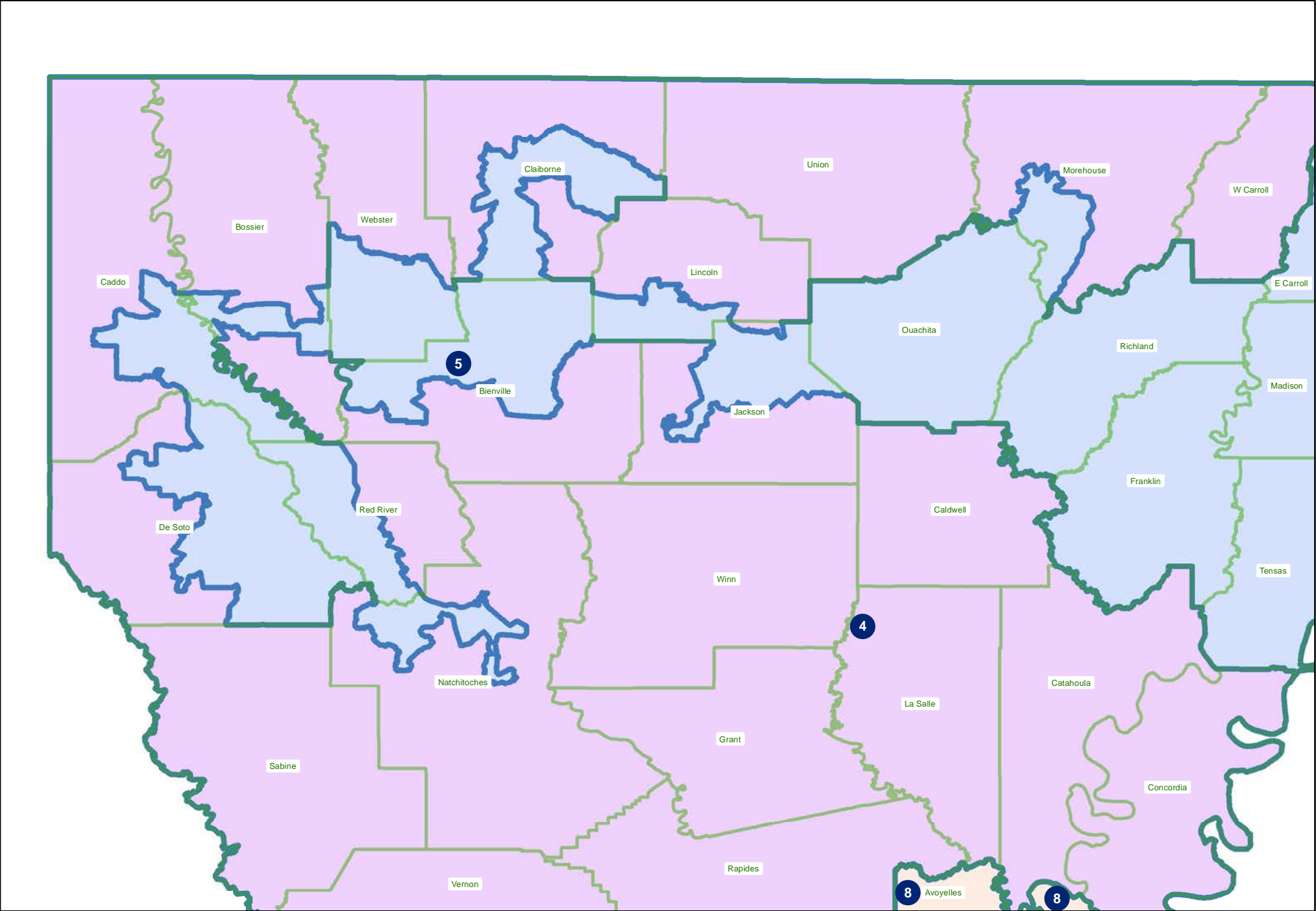


# SLS 221ES-36 by Barrow

## BESE Baton Rouge



SLS 221ES-36 by Barrow  
BESE Northwest





SLS 221ES-36 by Barrow  
BESE Monroe

