

First Extraordinary Session, 2011

SENATE BILL NO. 24

BY SENATOR RISER

CONGRESS. Provides for the redistricting of Louisiana's Congressional Districts.

1 AN ACT

2 To enact R.S. 18:1276.1 and to repeal R.S. 18:1276, relative to congressional districts; to
3 provide for the redistricting of Louisiana's seven congressional districts into six
4 congressional districts; to provide relative to the terms of members of congress
5 serving on the effective date of the Act; to provide for the filling of vacancies; to
6 provide relative to positions and offices, other than congressional, that are based
7 upon congressional districts; to provide for the effectiveness of the Act; and to
8 provide for related matters.

9 Be it enacted by the Legislature of Louisiana:

10 Section 1. R.S. 18:1276.1 is hereby enacted to read as follows:

11 **§1276.1. Congressional districts**

12 **A. Louisiana is divided into six congressional districts, and the qualified**
13 **electors of each district shall elect one representative to the United States House**
14 **of Representatives.**

15 **(1) District 1 is composed of Precincts 1, 2, 3, 4, 5, 7, 8, 9, 10, 11, 12, 13,**
16 **14, 15, 16, 17, 18, 19, 20, 21, 22, 23, 24, 25, 26, 27, 28, 29, 30, 31, 32, 33, 34, 35, 36,**
17 **37, 38, 39, 40, 41, 42, 43, 44, 45, 46, 51, 52, 53, 54, 55, 56, 58, 59, 60, 61, 62, 63, 64,**

1 65, 66, 67, 68, 69, 70, 71, 72, 73, 74, 75, 76, 77, 78, 79, 80, 81, 82, 83, 84, 85, 86, 87,
2 88, 89, 90, 91, 92, 93, 94, 95, 96, 97, 98, 99, 100, 101, 102, 103, 105, 106, 117, 118,
3 119, 120, 121, 122, 123, 124, 125, 126, 127, 128, 129, 130, 132, 134, 136, 192, 198,
4 199, 246, 247, 248, 1-GI, 1-H, 2-H, 3-H, 4-H, 5-H, 6-H, 7-H, 8-H, 9-H, 1-K, 2-K,
5 3-K, 4-K, 5-K, 6-K, 7-K, 8-K, 9-K, 10-K, 11-K, 12-K, 13-KA, 14-K, 16-K, 17-K,
6 18-K, 19-K, 20-K, 25-K, 27-K, 28-K, 34-K, 35-K and 1-L of Jefferson Parish;
7 Lafourche Parish; Precincts 4-9, 4-11, 4-14, 4-15, 4-17, 4-17A, 4-18, 4-20, 4-21,
8 4-22, 4-23, 5-13, 5-15, 5-16, 5-17, 5-18, 7-41, 7-42, 14-1, 14-2, 14-3, 14-4, 14-5,
9 14-6, 14-7, 14-8, 14-9, 14-10, 14-11, 14-14, 14-15, 14-16, 14-17, 14-20, 16-1,
10 16-1A, 16-2, 16-3, 16-4, 17-1, 17-17, 17-18, 17-18A, 17-19 and 17-20 of Orleans
11 Parish; Plaquemines Parish; St. Bernard Parish; St. Tammany Parish and
12 Precincts 15, 17, 18, 26, 27, 27A, 28, 28A, 33, 40, 40A, 41, 42, 42A, 43, 44, 45,
13 45A, 46, 47, 48, 49, 70, 70A, 71, 72, 72A, 73, 74, 111, 111A, 115B, 117, 119, 120,
14 120A, 120B, 121, 121A, 121B, 122, 122A, 123, 124, 125, 127, 127A, 129, 129A,
15 133, 133A, 137, 137A, 137B, 137C, 137D, 139, 141, 141A, 143, 145, 149, 149A
16 and 151 of Tangipahoa Parish.

17 (2) District 2 is composed of Precincts 28, 36, 37, 39, 42, 44, 45, 47, 48,
18 49, 50, 51, 52, 53, 54, 55, 56 and 57 of Ascension Parish; Precincts 1-1, 1-2, 2-1,
19 2-2, 5-1, 5-2 and 6-2 of Assumption Parish; Precincts 1-2, 1-3, 1-4, 1-5, 1-6, 1-10,
20 1-13, 1-14, 1-15, 1-16, 1-17, 1-18, 1-19, 1-21, 1-22, 1-23, 1-24, 1-25, 1-26, 1-27,
21 1-28, 1-29, 1-30, 1-31, 1-32, 1-36, 1-37, 1-38, 1-45, 1-50, 1-51, 1-58, 1-61, 1-62,
22 1-63, 1-67, 1-68, 1-77, 1-84, 1-85, 1-86, 1-91, 1-92, 1-93, 1-94, 1-95, 1-100, 1-101,
23 1-104, 2-1, 2-2, 2-9, 2-11, 2-16, 2-20, 2-22, 2-23, 2-24, 2-27 and 2-30 of East Baton
24 Rouge Parish; Precincts 1, 2, 3, 6, 7, 8, 10, 11, 12, 13A, 13B, 13C, 14A, 15, 16, 19,
25 19A, 20, 21, 22 and 23 of Iberville Parish; Precincts 57, 104, 107, 108, 115, 116,
26 131, 133, 138, 150, 151, 152, 153, 154, 155, 156, 157A, 157B, 170, 171, 172, 173,
27 174, 175, 176, 177, 178, 179A, 179B, 180, 181, 182, 183, 184, 185A, 185B, 187,
28 188, 189, 190, 191, 193, 194A, 194B, 195, 196, 197A, 197B, 197C, 200, 201, 202,
29 203, 204, 205, 210, 211, 212A, 212B, 213A, 213B, 213C, 214A, 214B, 215, 216A,

1 216B, 217, 225, 226, 227, 228, 229, 230, 231, 232A, 232B, 234, 235, 236, 237, 238,
 2 1-G, 2-G, 3-G, 4-G, 5-G, 6-G, 7-G, 8-G, 9-G, 10-G, 11-G, 12-G, 13-G, 13-KB,
 3 15-K, 21-K, 22-K, 23-K, 24-K, 26-K, 29-K, 30-K, 31-K, 33-K, 1-W, 2-W, 3-W,
 4 4-W, 5-W, 6-W and 7-W of Jefferson Parish; Precincts 1-1, 1-2, 1-5, 1-6, 2-1,
 5 2-2, 2-3, 2-4, 2-6, 2-6A, 2-7, 3-1, 3-3, 3-5, 3-8, 3-9, 3-12, 3-14, 3-15, 3-18, 3-19,
 6 3-20, 4-2, 4-3, 4-4, 4-5, 4-6, 4-7, 4-8, 5-1, 5-2, 5-3, 5-4, 5-5, 5-7, 5-8, 5-9, 5-10, 5-11,
 7 5-12, 6-1, 6-2, 6-4, 6-6, 6-7, 6-8, 6-9, 7-1, 7-2, 7-4, 7-5, 7-6, 7-7, 7-8, 7-9A, 7-10,
 8 7-11, 7-12, 7-13, 7-14, 7-15, 7-16, 7-17, 7-18, 7-19, 7-20, 7-21, 7-23, 7-24, 7-25,
 9 7-25A, 7-26, 7-27, 7-27B, 7-28, 7-28A, 7-29, 7-30, 7-32, 7-33, 7-34, 7-35, 7-37,
 10 7-37A, 7-40, 8-1, 8-2, 8-4, 8-6, 8-7, 8-8, 8-9, 8-12, 8-13, 8-14, 8-15, 8-19, 8-20,
 11 8-21, 8-22, 8-23, 8-24, 8-25, 8-26, 8-27, 8-28, 8-30, 9-1, 9-3, 9-3A, 9-4, 9-5, 9-5A,
 12 9-6B, 9-6C, 9-6D, 9-6E, 9-6F, 9-7, 9-8, 9-8A, 9-9, 9-10, 9-11, 9-12, 9-13, 9-14,
 13 9-15, 9-16, 9-17, 9-19, 9-21, 9-23, 9-25, 9-26, 9-28, 9-28C, 9-28E, 9-29, 9-30,
 14 9-30A, 9-31, 9-31A, 9-31B, 9-31D, 9-32, 9-33, 9-34A, 9-35, 9-35A, 9-36, 9-36B,
 15 9-37, 9-38, 9-38A, 9-39, 9-39B, 9-40, 9-40A, 9-40C, 9-41, 9-41A, 9-41B, 9-41C,
 16 9-41D, 9-42, 9-42C, 9-43A, 9-43B, 9-43C, 9-43E, 9-43F, 9-43G, 9-43H, 9-43I,
 17 9-43J, 9-43K, 9-43L, 9-43M, 9-43N, 9-44, 9-44A, 9-44B, 9-44D, 9-44E, 9-44F,
 18 9-44G, 9-44I, 9-44J, 9-44L, 9-44M, 9-44N, 9-44O, 9-44P, 9-44Q, 9-45, 9-45A,
 19 10-3, 10-6, 10-7, 10-8, 10-9, 10-11, 10-12, 10-13, 10-14, 11-2, 11-3, 11-4, 11-5,
 20 11-8, 11-9, 11-10, 11-11, 11-12, 11-13, 11-14, 11-17, 12-1, 12-2, 12-3, 12-4, 12-5,
 21 12-6, 12-7, 12-8, 12-9, 12-10, 12-11, 12-12, 12-13, 12-14, 12-16, 12-17, 12-19, 13-1,
 22 13-2, 13-3, 13-4, 13-5, 13-6, 13-7, 13-8, 13-9, 13-10, 13-11, 13-12, 13-13, 13-14,
 23 13-15, 13-16, 14-12, 14-13A, 14-18A, 14-19, 14-21, 14-23, 14-24A, 14-25, 14-26,
 24 15-1, 15-2, 15-3, 15-5, 15-6, 15-8, 15-9, 15-10, 15-11, 15-12, 15-12A, 15-13,
 25 15-13A, 15-13B, 15-14, 15-14A, 15-14B, 15-14C, 15-14D, 15-14E, 15-14F,
 26 15-14G, 15-15, 15-15A, 15-15B, 15-16, 15-17, 15-17A, 15-17B, 15-18, 15-18A,
 27 15-18B, 15-18C, 15-18D, 15-18E, 15-18F, 15-19, 15-19A, 15-19B, 15-19C, 16-5,
 28 16-6, 16-7, 16-8, 16-9, 17-2, 17-3, 17-4, 17-5, 17-6, 17-7, 17-8, 17-9, 17-10, 17-11,
 29 17-12, 17-13, 17-13A, 17-14, 17-15 and 17-16 of Orleans Parish; Precincts 1-1,

1 1-2, 1-3, 1-5, 2-1, 2-2, 2-3, 2-4, 2-5, 4-1, 4-2, 4-3, 4-4, 7-1, 7-2, 7-3 and 7-4 of St.
 2 Charles Parish; St. James Parish; Precincts 1-1, 1-2, 1-3, 1-4, 1-5, 2-1, 2-2, 2-3,
 3 2-4, 3-1, 3-2, 3-3, 3-4, 4-1, 4-2, 4-3, 4-8, 4-9, 5-2, 5-5, 6-1, 6-3, 6-4, 7-5 and 7-7 of
 4 St. John the Baptist Parish and Precincts 1-1, 3-1A, 4-2, 4-4, 4-5 and 5-1 of West
 5 Baton Rouge Parish.

6 (3) District 3 is composed of Precincts 1-1, 1-2A, 1-2B, 1-3A, 1-3B, 1-4A,
 7 1-4B, 1-5A, 1-5B, 1-6, 1-7, 1-8, 1-9, 2-2, 5-2A, 5-2B, 5-3, 5-4, 6-1, 6-2, 6-3A, 6-3B,
 8 6-4, 6-5, 6-6, 6-7, 6-8, 6-9, 6-10, 6-11, 6-12, 6-13, 6-14, 6-15 and 6-16 of Acadia
 9 Parish; Calcasieu Parish; Cameron Parish; Iberia Parish; Lafayette Parish;
 10 Precincts 1-1 and 1-4 of St. Martin Parish; St. Mary Parish; Terrebonne Parish
 11 and Vermilion Parish.

12 (4) District 4 is composed of Precincts 2-1, 2-3, 2-4, 2-5, 3-1, 3-2, 3-3A,
 13 3-3B, 3-4, 3-5, 3-6, 3-7, 4-1, 4-2, 4-3, 4-4, 4-5, 4-6, 5-1A, 5-1B, 5-5, 7-2, 7-3 and
 14 7-4 of Acadia Parish; Allen Parish; Beauregard Parish; Bienville Parish;
 15 Bossier Parish; Caddo Parish; Claiborne Parish; De Soto Parish; Evangeline
 16 Parish; Precincts 1-1, 1-2, 1-3, 2-1, 2-2, 3-1 and 3-2 of Grant Parish; Jefferson
 17 Davis Parish; Natchitoches Parish; Red River Parish; Sabine Parish; Vernon
 18 Parish and Webster Parish.

19 (5) District 5 is composed of Avoyelles Parish; Caldwell Parish;
 20 Catahoula Parish; Concordia Parish; East Carroll Parish; Franklin Parish;
 21 Precincts 2-3, 3-3, 4-1, 4-2, 5-1, 5-2, 6-1, 6-2, 6-3, 7-1, 7-2, 7-3, 7-4, 8-1, 8-2 and
 22 8-3 of Grant Parish; Jackson Parish; La Salle Parish; Lincoln Parish; Madison
 23 Parish; Morehouse Parish; Ouachita Parish; Precincts 1, 2, 3, 4, 5, 6, 7, 8, 9,
 24 13A, 14, 15A, 16A, 16B, 17, 18, 19A and 22A of Pointe Coupee Parish; Rapides
 25 Parish; Richland Parish; St. Landry Parish; Precincts 1-3, 1-7, 2-1, 2-2, 2-3, 2-4,
 26 3-1, 3-1A, 3-1B, 3-2, 3-3, 3-4, 3-4A, 3-5, 3-6, 3-9, 4-1, 4-1A, 4-2, 4-3, 4-4, 4-4A,
 27 4-5, 4-6, 5-1, 5-2, 5-3, 5-4, 6-1, 6-2, 6-2A, 6-3, 6-3A, 6-3B, 6-4, 7-1, 7-1A, 7-2A,
 28 7-3, 7-4, 7-4A, 8-1, 8-3, 8-4, 8-4A, 9-1, 9-2, 9-3, 9-4 and 9-5 of St. Martin Parish;
 29 Tensas Parish; Union Parish; West Carroll Parish and Winn Parish.

(6) District 6 is composed of Precincts 1, 2, 3, 4, 5, 6, 7, 8, 9, 10, 11, 12, 13, 14, 15, 16, 17, 18, 19, 20, 21, 22, 23, 24, 25, 26, 27, 30, 31, 32, 33, 34, 35, 40, 41, 43, 58, 60 and 61 of Ascension Parish; Precincts 2-3, 3-1, 3-2, 4-1, 4-2, 5-3, 5-4, 6-1, 7-1, 7-2, 8-1 and 9-1 of Assumption Parish; Precincts 1-1, 1-7, 1-8, 1-9, 1-12, 1-33, 1-34, 1-35, 1-39, 1-40, 1-41, 1-42, 1-43, 1-44, 1-46, 1-47, 1-48, 1-49, 1-52, 1-53, 1-54, 1-55, 1-56, 1-57, 1-59, 1-60, 1-64, 1-65, 1-66, 1-69, 1-70, 1-71, 1-72, 1-73, 1-74, 1-75, 1-78, 1-80, 1-81, 1-82, 1-83, 1-87, 1-88, 1-89, 1-90, 1-97, 1-98, 1-99, 1-102, 1-103, 1-105, 1-107, 2-3, 2-4, 2-5, 2-6, 2-7, 2-8, 2-10, 2-12, 2-13, 2-14, 2-15, 2-17, 2-18, 2-19, 2-21, 2-25, 2-26, 2-28, 2-29, 2-31, 2-32, 3-1, 3-2, 3-3, 3-4, 3-5, 3-6, 3-7, 3-8, 3-9, 3-10, 3-11, 3-12, 3-13, 3-14, 3-15, 3-16, 3-17, 3-18, 3-19, 3-20, 3-21, 3-22, 3-23, 3-24, 3-25, 3-26, 3-27, 3-28, 3-29, 3-30, 3-31, 3-32, 3-33, 3-34, 3-35, 3-36, 3-37, 3-38, 3-39, 3-40, 3-41, 3-42, 3-43, 3-44, 3-45, 3-46, 3-47, 3-48, 3-49, 3-50, 3-51, 3-52, 3-53, 3-54 and 3-55 of East Baton Rouge Parish; East Feliciana Parish; Precincts 4, 5, 6A, 13, 14, 14B, 15A, 15B, 17, 17A, 18, 24, 25, 25A, 25B, 26, 26A, 27, 28, 29, 30, 31 and 32 of Iberville Parish; Livingston Parish; Precincts 10A, 10B, 11, 12, 13B, 15B, 20A, 20B, 21, 23 and 24 of Pointe Coupee Parish; Precincts 1-6, 3-1, 3-2, 3-3, 3-4, 3-5, 3-6, 5-1, 5-2, 5-3, 5-4, 5-5, 6-1, 6-2, 6-3, 6-4, 6-5, 6-6, 6-7 and 6-8 of St. Charles Parish; St. Helena Parish; Precincts 4-4, 5-1, 5-3, 5-4, 5-6, 5-7, 7-2, 7-3 and 7-4 of St. John the Baptist Parish; Precincts 1-2 and 1-5 of St. Martin Parish; Precincts 1, 2, 6, 11, 16, 101, 102, 103, 104, 104A, 105, 106, 106A, 106B, 107, 108, 109, 109A, 110, 112, 114, 116 and 118 of Tangipahoa Parish; Washington Parish; Precincts 2-1A, 2-1B, 2-2, 2-3, 3-1B, 3-2, 4-1, 4-3A, 4-3B, 6-1, 6-2, 7-1, 7-2, 7-3 and 7-4 of West Baton Rouge Parish and West Feliciana Parish.

B. The precincts referenced in this Section are those precincts identified as Voting Districts (VTDs) in the 2010 Census Redistricting TIGER/Line Shapefiles for the State of Louisiana.

C. When a precinct referenced in this Section has been subdivided by action of the parish governing authority on a nongeographic basis or subdivided

1 by action of the parish governing authority on a geographic basis in accordance
2 with the provisions of R.S. 18:532.1, the enumeration in this Section of the
3 general precinct designation shall include all nongeographic and all geographic
4 subdivisions thereof, however such subdivisions may be designated. The
5 territorial limits of the districts as provided in this Section shall continue in
6 effect without change regardless of any changes made to the precincts by the
7 parish governing authority.

8 D. This Section shall not reduce the term of office of any member of
9 congress who was elected at the 2010 congressional election or who was elected
10 to fill a vacancy for the remainder of a term that began on January 3, 2011.

11 E. A vacancy in the representation of any congressional district that is
12 filled after January 3, 2013, shall be filled as provided by law from that district
13 as it is described in this Section.

14 F. This Section shall not reduce the term of office of any person holding
15 any position or office on January 3, 2013, for which the appointment or election
16 is based upon a congressional district. Any position or office filled after
17 January 3, 2013, for which the appointment or election is based on a
18 congressional district shall be appointed or elected from that district as it is
19 described in this Section.

20 Section 2. R.S. 18:1276 is hereby repealed effective at noon on January 3, 2013.

21 Section 3. The provisions of Section 1 of this Act shall be effective for the purposes
22 of election of representatives to the United States Congress at the next regularly scheduled
23 election for representatives to the congress in 2012, commencing on the date and at the time
24 that the qualifying period opens for such offices. The effectiveness of Section 1 of this Act
25 for such qualification and election shall not reduce the term of office of any member of the
26 congress or change the district which any member represents pursuant to R.S. 18:1276. For
27 subsequent elections of representatives to the United States Congress and for all other
28 purposes, the provisions of Section 1 of this Act shall become effective at noon on January
29 3, 2013.

The original instrument was prepared by Yolanda Johnson Dixon. The following digest, which does not constitute a part of the legislative instrument, was prepared by Alden A. Clement, Jr.

DIGEST

Riser (SB 24)

Present law provides for seven La. congressional districts.

Proposed law repeals present law, and further redistricts the present La. congressional districts to provide for six La. congressional districts.

Effective for election purposes only for the regular congressional elections in 2012; effective for all purposes on 1/3/2013.

(Enacts R.S. 18:1276.1; repeals R.S. 18:1276)

Summary of Amendments Adopted by Senate

Committee Amendments Proposed by Senate Committee on Senate and Governmental Affairs to the original bill.

1. Adds various precincts to, and deletes various precincts from, the composition of certain congressional districts as set forth in proposed law.
2. Makes various technical changes to proposed law.

Plan Statistics

<u>Districts:</u>	<u># of Members</u>	<u>Actual Population</u>	<u>Ideal Population</u>	<u>Absolute Deviation</u>	<u>Relative Deviation</u>
District 1	1	755,517	755,562	-45	-0.006%
District 2	1	755,600	755,562	38	0.005%
District 3	1	755,575	755,562	13	0.002%
District 4	1	755,584	755,562	22	0.003%
District 5	1	755,629	755,562	67	0.009%
District 6	1	755,467	755,562	-95	-0.013%
Grand Total:	6	4,533,372	4,533,372		

Ideal Population Per Member: 755562
 Number of Districts for Plan Type: 6
 Range of District Populations: 755,467 to 755,629
 Absolute Mean Deviation: 27
 Absolute Range: -95 to 67
 Absolute Overall Range: 162
 Relative Mean Deviation: 0.01%
 Relative Range: -0.01% to 0.01%
 Relative Overall Range: 0.02%

<i>Ideal - Actual:</i>	0
<i>Remainder:</i>	0
<i>Unassigned Population:</i>	0

Total Population

	Total Population	Total White	Total Black	Total Asian	Total American Indian	Total Other	Total Hispanic	Reg Total Jan 2011
District 1	755,517	597,625	110,088	17,354	9,239	21,211	56,470	452,720
	100.000%	79.101%	14.571%	2.297%	1.223%	2.807%	7.474%	78.121%
District 2	755,600	235,867	475,960	20,666	4,070	19,037	43,542	449,474
	100.000%	31.216%	62.991%	2.735%	0.539%	2.519%	5.763%	78.706%
District 3	755,575	527,499	190,804	12,178	12,589	12,505	25,347	447,827
	100.000%	69.814%	25.253%	1.612%	1.666%	1.655%	3.355%	79.611%
District 4	755,584	474,051	252,046	8,705	10,461	10,321	23,463	428,255
	100.000%	62.740%	33.358%	1.152%	1.384%	1.366%	3.105%	75.670%
District 5	755,629	467,675	269,080	6,380	5,668	6,826	15,200	463,655
	100.000%	61.892%	35.610%	0.844%	0.750%	0.903%	2.012%	82.023%
District 6	755,467	533,475	188,907	16,268	4,526	12,291	28,538	438,444
	100.000%	70.615%	25.005%	2.153%	0.599%	1.627%	3.778%	76.783%
Grand Total	4,533,372	2,836,192	1,486,885	81,551	46,553	82,191	192,560	2,680,375
	100.000%	62.563%	32.799%	1.799%	1.027%	1.813%	4.248%	78.480%

Voter Registration

	Reg Total Jan 2011	Reg White Jan 2011	Reg Black Jan 2011	Reg Other Jan 2011	Reg Dem Total Jan 2011	Reg Rep Total Jan 2011	Reg Other Total Jan 2011
District 1	452,720	375,255	49,493	27,972	172,161	166,788	113,771
	78.121%	82.889%	10.932%	6.179%	38.028%	36.841%	25.131%
District 2	449,474	144,131	277,224	28,119	302,309	50,910	96,255
	78.706%	32.067%	61.677%	6.256%	67.258%	11.327%	21.415%
District 3	447,827	328,775	102,599	16,453	215,611	122,602	109,614
	79.611%	73.416%	22.910%	3.674%	48.146%	27.377%	24.477%
District 4	428,255	281,438	132,079	14,738	218,318	116,845	93,092
	75.670%	65.717%	30.841%	3.441%	50.979%	27.284%	21.738%
District 5	463,655	300,937	151,112	11,606	248,965	119,800	94,890
	82.023%	64.905%	32.591%	2.503%	53.696%	25.838%	20.466%
District 6	438,444	330,581	91,570	16,293	197,622	141,245	99,577
	76.783%	75.399%	20.885%	3.716%	45.073%	32.215%	22.711%
Grand Total	2,680,375	1,761,117	804,077	115,181	1,354,986	718,190	607,199

Splits

	Total Population	Total White	Total Black	Total Asian	Total American Indian	Total Other	VAP Total	VAP White	VAP Black	VAP Asian	VAP American Indian	VAP Other	Reg Total Jan 2011	Reg White Jan 2011	Reg Black Jan 2011	Reg Other Jan 2011
District 1																
*Jefferson	232,558	185,952	24,579	8,982	1,695	11,350	186,310	152,063	17,452	6,880	1,286	8,629	138,660	117,589	8,804	12,267
Lafourche	96,318	76,445	13,363	855	3,457	2,198	72,652	59,362	8,945	612	2,187	1,546	53,711	45,827	6,316	1,568
*Orleans	37,918	33,329	2,742	1,116	193	538	31,208	27,623	2,136	886	144	419	25,314	21,843	1,472	1,999
Plaquemines	23,042	16,246	4,951	844	556	445	16,713	12,086	3,367	583	396	281	14,534	10,541	3,075	918
St. Bernard	35,897	26,579	6,705	873	522	1,218	26,720	20,490	4,338	640	370	882	23,358	19,332	2,829	1,197
St. Tammany	233,740	195,364	28,449	3,807	2,182	3,938	173,604	147,964	18,752	2,570	1,579	2,739	143,614	121,851	13,495	8,268
*Tangipahoa	96,044	63,710	29,299	877	634	1,524	72,301	50,579	19,563	655	483	1,021	53,529	38,272	13,502	1,755
District 1	755,517	597,625	110,088	17,354	9,239	21,211	579,508	470,167	74,553	12,826	6,445	15,517	452,720	375,255	49,493	27,972
	100.000%	79.101%	14.571%	2.297%	1.223%	2.807%	100.000%	81.132%	12.865%	2.213%	1.112%	2.678%	78.121%	82.889%	10.932%	6.179%
District 2																
*Ascension	20,113	6,410	13,119	108	73	403	14,577	5,174	9,004	85	56	258	12,293	4,169	7,813	311
*Assumption	7,178	3,185	3,888	11	28	66	5,328	2,509	2,739	7	17	56	4,590	2,128	2,446	16
*East Baton Rouge	109,536	7,666	100,521	446	252	651	79,407	6,948	71,407	362	200	490	63,830	4,699	57,204	1,927
*Iberville	20,429	7,226	12,963	67	47	126	15,787	6,018	9,589	49	39	92	11,494	3,912	7,411	171
*Jefferson	199,994	86,163	92,420	9,661	1,707	10,043	148,845	69,210	63,850	7,230	1,203	7,352	113,417	51,538	51,329	10,550
*Orleans	305,911	80,099	207,705	9,835	1,503	6,769	239,406	72,057	152,558	7,954	1,255	5,582	186,458	48,593	124,176	13,689
*St. Charles	26,648	18,295	7,600	218	212	323	19,549	13,800	5,254	134	141	220	16,274	11,638	4,101	535
St. James	22,102	10,615	11,290	43	52	102	16,401	8,231	8,039	26	41	64	14,703	7,249	7,260	194
*St. John the Baptist	35,471	12,476	22,101	225	166	503	25,711	9,910	15,195	146	114	346	21,157	7,746	12,721	690
*West Baton Rouge	8,218	3,732	4,353	52	30	51	6,072	2,925	3,046	46	23	32	5,258	2,459	2,763	36
District 2	755,600	235,867	475,960	20,666	4,070	19,037	571,083	196,782	340,681	16,039	3,089	14,492	449,474	144,131	277,224	28,119
	100.000%	31.216%	62.991%	2.735%	0.539%	2.519%	100.000%	34.458%	59.655%	2.809%	0.541%	2.538%	78.706%	32.067%	61.677%	6.256%
District 3																
*Acadia	35,072	25,990	8,575	123	160	224	25,687	19,642	5,703	85	110	147	21,222	16,207	4,770	245
Calcasieu	192,768	136,514	49,825	2,550	1,626	2,253	143,756	105,077	34,139	1,846	1,187	1,507	117,844	86,021	27,975	3,848
Cameron	6,839	6,546	135	10	60	88	5,183	5,011	74	9	38	51	5,536	5,272	188	76
Iberia	73,240	45,551	24,091	1,926	428	1,244	53,398	35,137	15,754	1,308	307	892	45,139	30,016	13,917	1,206
Lafayette	221,578	153,706	58,912	3,891	1,290	3,779	167,315	120,566	40,203	2,884	951	2,711	131,124	95,632	30,155	5,337
*St. Martin	1,569	1,273	250	13	5	28	1,178	966	181	9	3	19	1,065	867	171	27
St. Mary	54,650	32,406	18,290	1,058	1,269	1,627	40,746	25,191	12,797	773	837	1,148	31,845	20,072	10,527	1,246
Terrebonne	111,860	78,591	22,072	1,333	7,375	2,489	82,737	60,621	14,647	986	4,725	1,758	59,299	45,337	10,268	3,694
Vermilion	57,999	46,922	8,654	1,274	376	773	42,522	35,424	5,457	902	259	480	34,753	29,351	4,628	774
District 3	755,575	527,499	190,804	12,178	12,589	12,505	562,522	407,635	128,955	8,802	8,417	8,713	447,827	328,775	102,599	16,453
	100.000%	69.814%	25.253%	1.612%	1.666%	1.655%	100.000%	72.466%	22.924%	1.565%	1.496%	1.549%	79.611%	73.416%	22.910%	3.674%
District 4																

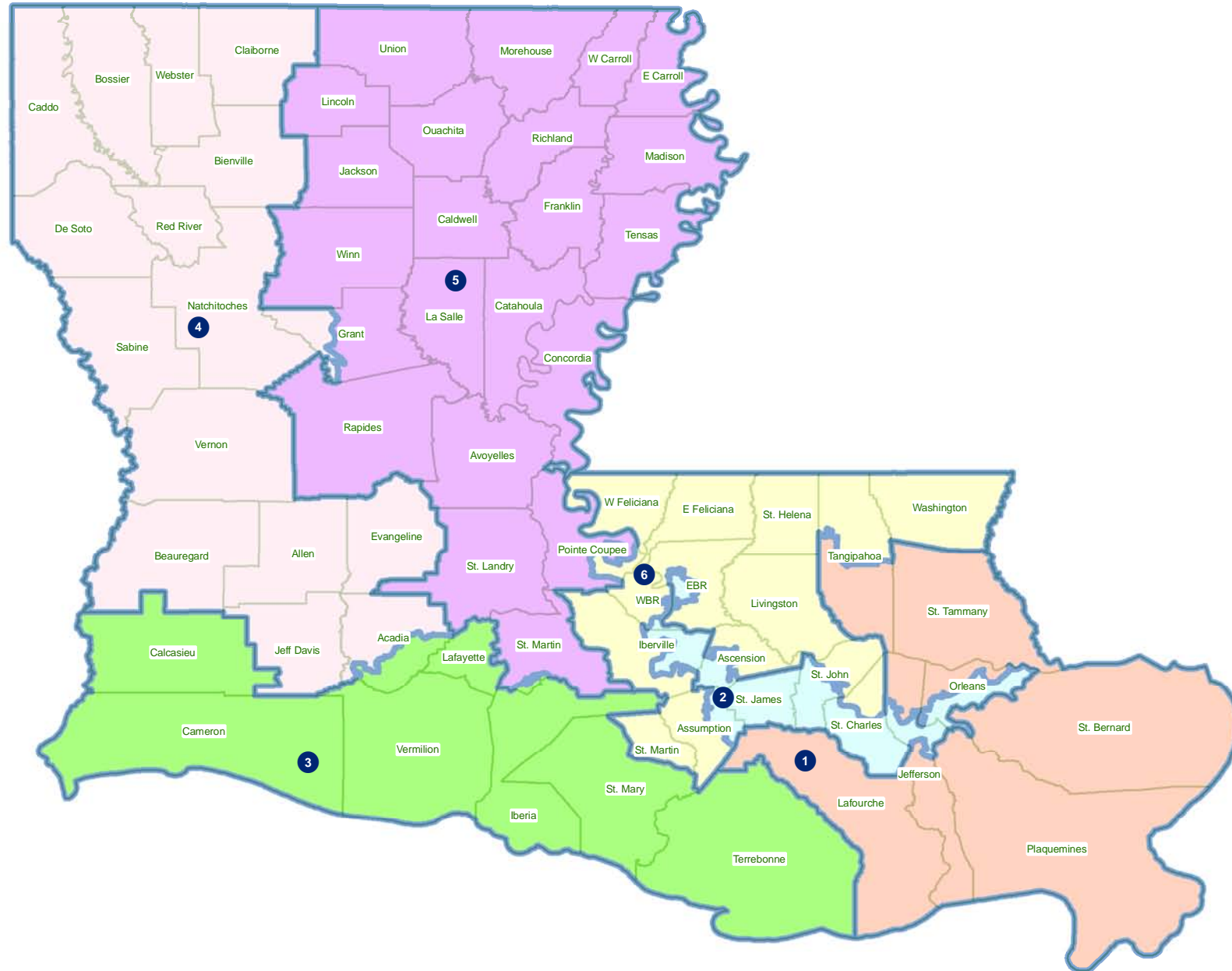
Splits

	Total Population	Total White	Total Black	Total Asian	Total American Indian	Total Other	VAP Total	VAP White	VAP Black	VAP Asian	VAP American Indian	VAP Other	Reg Total Jan 2011	Reg White Jan 2011	Reg Black Jan 2011	Reg Other Jan 2011
District 4																
*Acadia	26,701	23,137	3,070	73	153	268	19,223	16,912	1,965	46	103	197	16,034	14,139	1,671	224
Allen	25,764	18,435	6,192	220	749	168	19,870	14,288	4,828	154	495	105	13,110	10,190	2,397	523
Beauregard	35,654	29,321	5,016	353	652	312	26,359	21,902	3,569	239	460	189	19,924	16,703	2,304	917
Bienville	14,353	7,935	6,153	44	132	89	11,012	6,279	4,544	31	105	53	9,256	5,112	4,085	59
Bossier	116,979	84,430	25,606	2,516	1,139	3,288	86,945	64,692	17,413	1,836	837	2,167	60,834	46,663	11,491	2,680
Caddo	254,969	124,942	122,229	3,230	1,906	2,662	192,315	100,748	85,902	2,363	1,455	1,847	151,374	79,163	66,708	5,503
Claiborne	17,195	8,167	8,820	62	99	47	13,815	6,781	6,889	37	80	28	8,877	4,908	3,872	97
De Soto	26,656	15,456	10,600	54	331	215	20,006	12,055	7,495	42	273	141	16,396	9,663	6,191	542
Evangeline	33,984	23,439	9,862	139	161	383	24,817	17,619	6,661	97	117	323	21,407	15,267	5,973	167
*Grant	5,304	3,572	1,660	13	43	16	4,019	2,791	1,181	9	30	8	3,373	2,268	1,057	48
Jefferson Davis	31,594	25,125	5,836	98	275	260	23,196	18,871	3,891	66	180	188	19,337	15,808	3,132	397
Natchitoches	39,566	21,494	16,778	197	649	448	29,966	17,226	11,771	151	477	341	22,982	13,181	8,878	923
Red River	9,091	5,360	3,633	16	43	39	6,778	4,256	2,450	12	34	26	5,981	3,566	2,377	38
Sabine	24,233	17,155	4,234	84	2,636	124	18,311	13,544	2,835	63	1,796	73	13,837	10,811	2,032	994
Vernon	52,334	39,614	8,313	1,426	1,177	1,804	37,822	29,416	5,349	1,026	848	1,183	21,620	17,881	2,495	1,244
Webster	41,207	26,469	14,044	180	316	198	31,497	20,907	10,110	120	241	119	23,913	16,115	7,416	382
District 4	755,584	474,051	252,046	8,705	10,461	10,321	565,951	368,287	176,853	6,292	7,531	6,988	428,255	281,438	132,079	14,738
	100.000%	62.740%	33.358%	1.152%	1.384%	1.366%	100.000%	65.074%	31.249%	1.112%	1.331%	1.235%	75.670%	65.717%	30.841%	3.441%
District 5																
Avoyelles	42,073	28,188	12,876	174	641	194	31,790	21,850	9,247	126	431	136	23,105	16,874	5,790	441
Caldwell	10,132	8,213	1,778	30	64	47	7,758	6,314	1,336	23	51	34	6,324	5,351	911	62
Catahoula	10,407	6,985	3,318	9	53	42	8,057	5,543	2,438	8	43	25	6,380	4,749	1,596	35
Concordia	20,822	11,959	8,604	59	123	77	15,589	9,298	6,117	41	88	45	12,696	7,997	4,529	170
East Carroll	7,759	2,245	5,398	47	31	38	5,766	1,845	3,830	37	25	29	5,330	1,617	3,664	49
Franklin	20,767	13,930	6,620	65	82	70	15,450	10,838	4,471	42	63	36	13,466	9,408	3,978	80
*Grant	17,005	14,577	1,942	84	342	60	13,139	10,997	1,797	58	244	43	8,527	8,093	227	207
Jackson	16,274	11,084	4,947	67	83	93	12,570	8,681	3,724	39	65	61	9,846	6,879	2,805	162
La Salle	14,890	12,689	1,808	40	215	138	11,366	9,677	1,402	35	143	109	8,427	7,648	621	158
Lincoln	46,735	25,775	19,184	874	230	672	37,130	20,875	14,821	749	183	502	24,016	14,604	8,519	893
Madison	12,093	4,498	7,452	33	55	55	9,071	3,644	5,312	20	45	50	7,634	2,780	4,764	90
Morehouse	27,979	14,345	13,281	142	102	109	21,061	11,583	9,230	102	79	67	18,681	10,048	8,329	304
Ouachita	153,720	92,884	57,194	1,722	705	1,215	113,347	72,316	38,405	1,248	549	829	94,408	59,945	30,997	3,466
*Pointe Coupee	15,213	8,191	6,814	29	51	128	11,355	6,343	4,875	22	43	72	10,326	5,422	4,808	96
Rapides	131,613	83,373	43,150	1,912	1,682	1,496	97,599	64,579	29,368	1,377	1,270	1,005	78,056	53,328	22,107	2,621
Richland	20,725	12,879	7,544	92	96	114	15,440	9,999	5,237	65	70	69	12,939	8,173	4,646	120

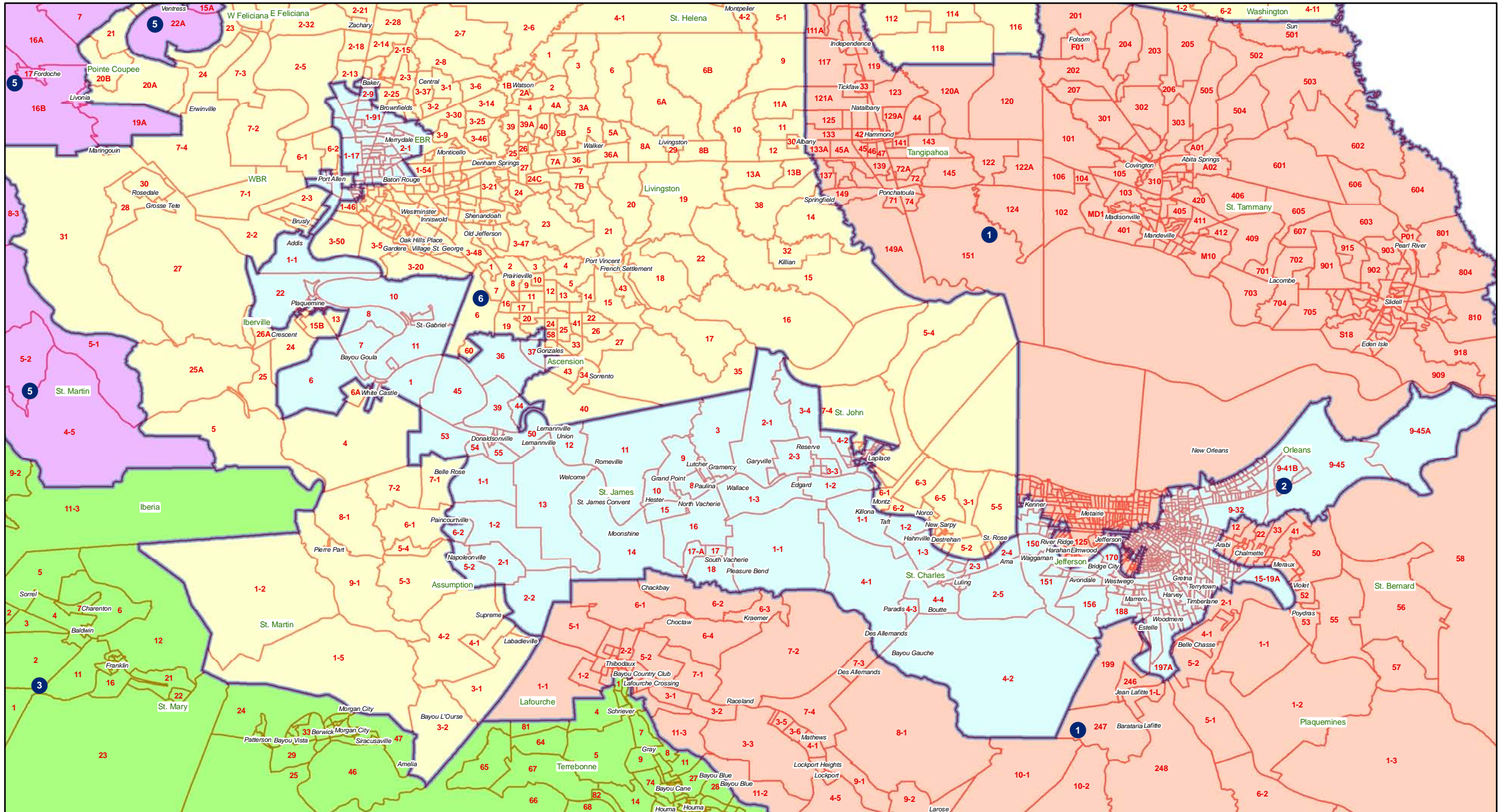
Splits

	Total Population	Total White	Total Black	Total Asian	Total American Indian	Total Other	VAP Total	VAP White	VAP Black	VAP Asian	VAP American Indian	VAP Other	Reg Total Jan 2011	Reg White Jan 2011	Reg Black Jan 2011	Reg Other Jan 2011
District 5																
St. Landry	83,384	46,615	35,153	395	406	815	60,704	35,593	23,997	266	278	570	56,549	31,901	23,591	1,057
*St. Martin	49,148	31,641	16,137	457	324	589	36,048	24,219	10,905	301	209	414	31,791	21,023	9,715	1,053
Tensas	5,252	2,202	2,991	13	15	31	3,923	1,796	2,085	11	9	22	4,131	1,807	2,304	20
Union	22,721	15,682	6,242	49	115	633	17,493	12,568	4,439	31	91	364	14,964	10,863	3,709	392
West Carroll	11,604	9,497	1,870	34	86	117	8,746	7,254	1,330	24	62	76	7,167	6,017	1,096	54
Winn	15,313	10,223	4,777	53	167	93	11,871	8,018	3,619	44	129	61	8,892	6,410	2,406	76
District 5	755,629	467,675	269,080	6,380	5,668	6,826	565,273	363,830	187,985	4,669	4,170	4,619	463,655	300,937	151,112	11,606
	100.000%	61.892%	35.610%	0.844%	0.750%	0.903%	100.000%	64.364%	33.256%	0.826%	0.738%	0.817%	82.023%	64.905%	32.591%	2.503%
District 6																
*Ascension	87,102	72,162	11,347	1,126	513	1,954	61,883	52,163	7,407	731	356	1,226	51,811	44,063	5,443	2,305
*Assumption	16,243	12,450	3,362	57	162	212	12,337	9,687	2,360	44	108	138	10,198	7,965	2,140	93
*East Baton Rouge	330,635	207,261	102,013	13,118	1,661	6,582	257,099	170,927	69,889	10,109	1,286	4,888	188,787	133,452	46,606	8,729
East Feliciana	20,267	10,783	9,250	67	127	40	16,075	8,775	7,123	58	94	25	13,411	7,629	5,126	656
*Iberville	12,958	9,054	3,657	57	70	120	10,098	7,236	2,669	36	59	98	8,958	6,502	2,343	113
Livingston	128,026	117,601	6,941	906	1,055	1,523	92,696	85,855	4,535	565	782	959	71,580	66,508	2,985	2,087
*Pointe Coupee	7,589	5,819	1,613	40	20	97	5,972	4,730	1,145	22	14	61	5,138	4,162	888	88
*St. Charles	26,132	18,245	6,795	357	159	576	19,023	13,645	4,614	223	122	419	15,431	11,275	3,353	803
St. Helena	11,203	5,034	6,014	16	72	67	8,440	4,036	4,291	11	60	42	8,432	3,816	4,517	99
*St. John the Baptist	10,453	7,025	2,843	189	71	325	7,857	5,498	1,932	144	50	233	6,628	4,720	1,544	364
*St. Martin	1,443	1,399	10	8	21	5	1,163	1,135	4	6	15	3	993	976	0	17
*Tangipahoa	25,053	16,496	8,082	78	200	197	18,376	12,552	5,496	55	148	125	15,135	10,307	4,487	341
Washington	47,168	31,482	14,884	145	305	352	35,305	24,363	10,374	101	238	229	25,608	17,973	7,239	396
*West Baton Rouge	15,570	10,539	4,779	62	55	135	11,789	8,142	3,471	46	44	86	9,538	6,785	2,645	108
West Feliciana	15,625	8,125	7,317	42	35	106	12,907	6,412	6,364	24	33	74	6,796	4,448	2,254	94
District 6	755,467	533,475	188,907	16,268	4,526	12,291	571,020	415,156	131,674	12,175	3,409	8,606	438,444	330,581	91,570	16,293
	100.000%	70.615%	25.005%	2.153%	0.599%	1.627%	100.000%	72.704%	23.059%	2.132%	0.597%	1.507%	76.783%	75.399%	20.885%	3.716%

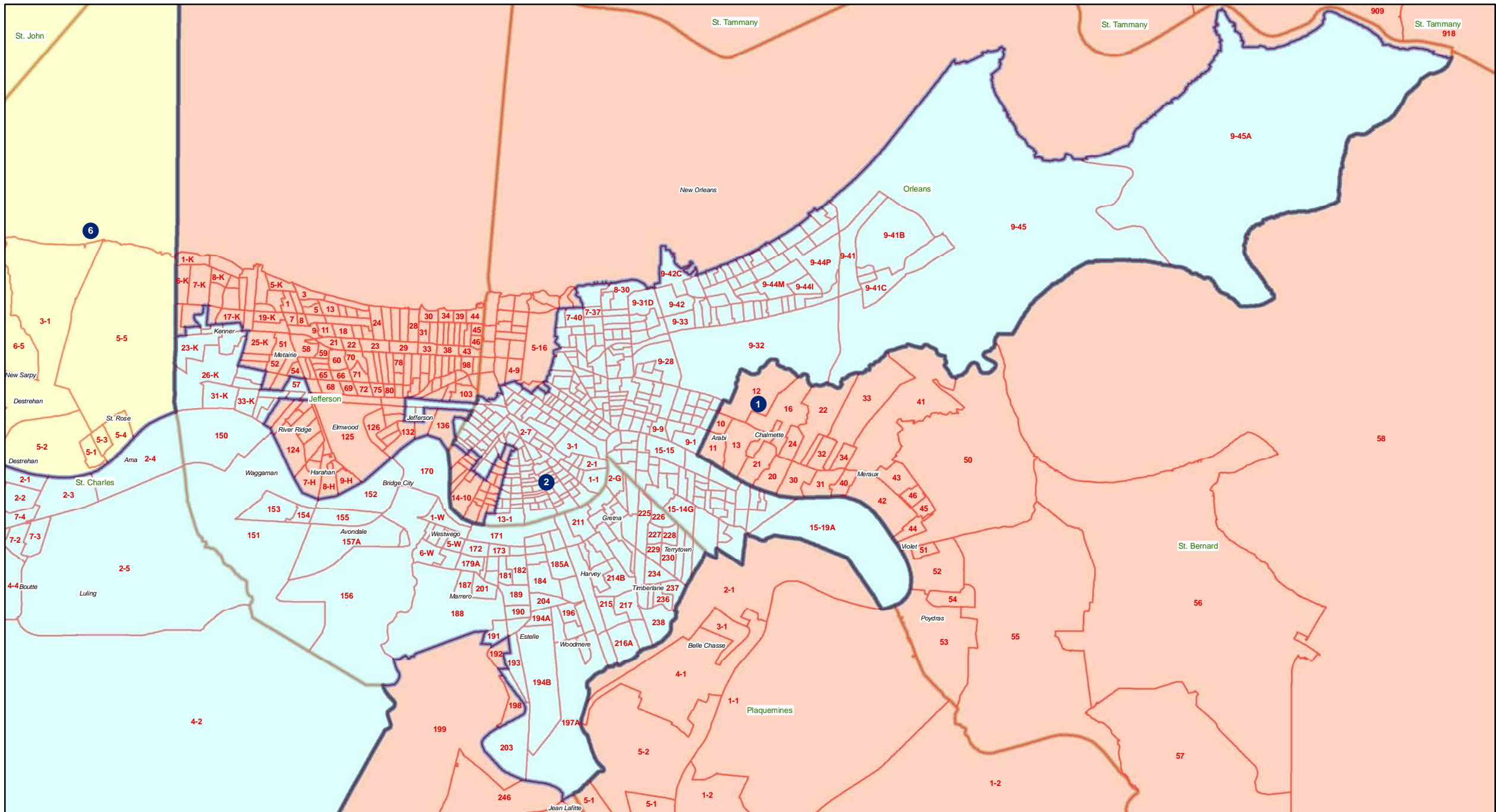
Congress - Statewide



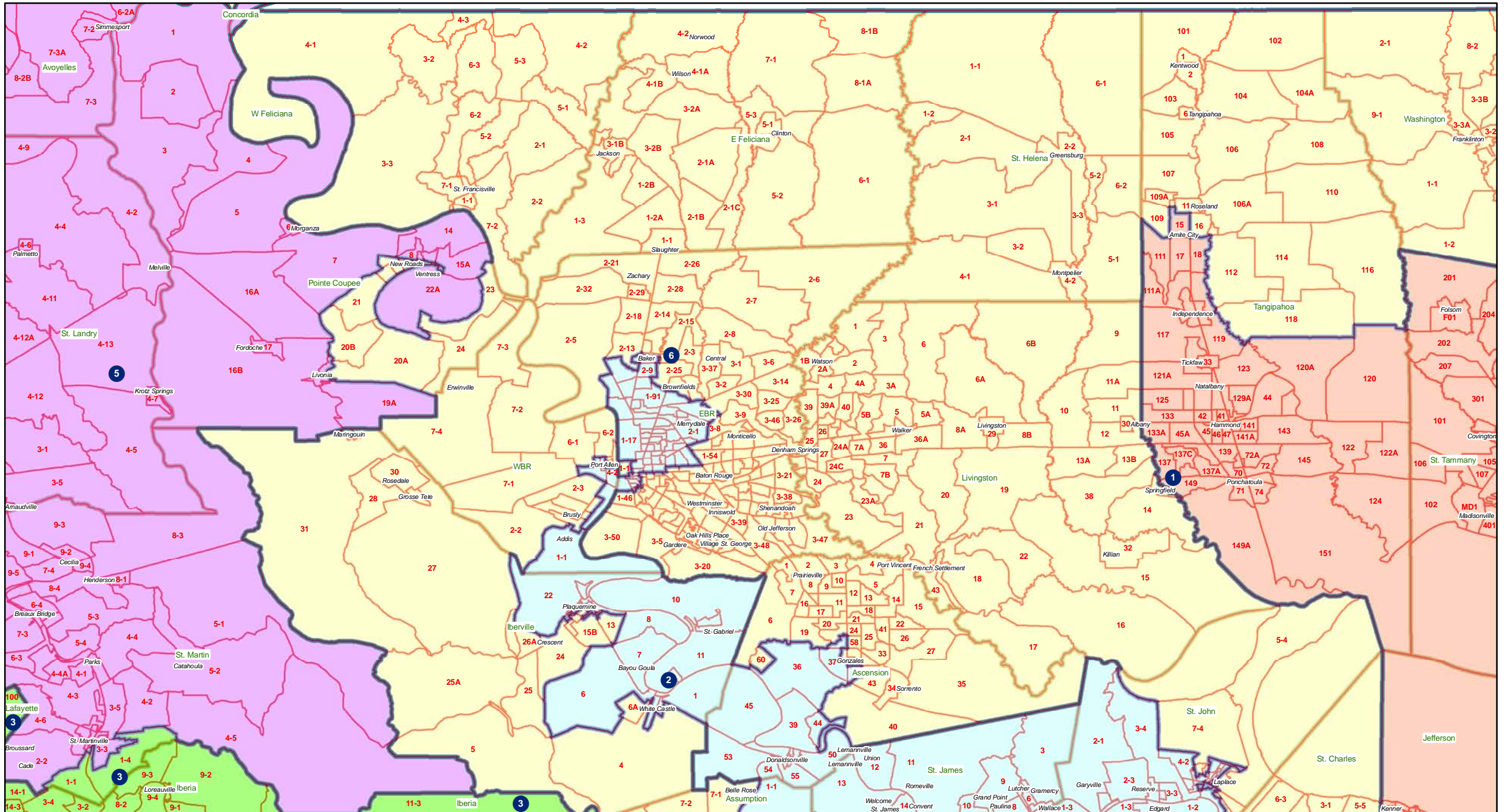
Congress - River area



Congress - Jefferson - Orleans



Congress - Pointe Coupee - East Baton Rouge - Iberville (part) - Ascension - Tangipahoa (part)



Congress - Grant

