

First Extraordinary Session, 2011

SENATE BILL NO. 33

BY SENATOR WILLARD-LEWIS

SENATE. Provides for the redistricting of the Louisiana Senate.

1 AN ACT

2 To enact R.S. 24:35 and to repeal R.S. 24:35.1, relative to legislative redistricting; to provide
3 for the redistricting of the Senate of the Legislature of Louisiana; to provide for
4 effective dates; and to provide for related matters.

5 Be it enacted by the Legislature of Louisiana:

6 Section 1. R.S. 24:35 is hereby enacted to read as follows:

7 **§35. Membership of the Senate**

8 **A. The Senate of the Legislature of Louisiana shall be composed of**
9 **thirty-nine members. The state shall be divided into the following senatorial**
10 **districts and one senator shall be chosen from each of the districts:**

11 **(1) District 1 is composed of Precincts 150, 151, 156, 157A, 157B, 199, 246, 247,**
12 **248, 1-GI, 1-L, 2-W, 3-W, 4-W, 6-W and 7-W of Jefferson Parish; Precincts 1-3, 1-4,**
13 **6-1, 6-2, 6-3, 6-4, 7-1, 7-3, 8-1, 9-1 and 9-3 of Plaquemines Parish; St. Bernard Parish**
14 **and Precincts 601, 602, 603, 604, 606, 705, 706, 801, 804, 805, 806, 807, 808, 810, 811,**
15 **812, 813, 815, 816, 817, 901, 902, 903, 905, 906, 913, 914, 915, 916, 917, 918 and P01 of**
16 **St. Tammany Parish.**

17 **(2) District 2 is composed of Precincts 9-1, 9-3, 9-3A, 9-4, 9-5, 9-5A, 9-6B, 9-6C,**

1 9-6D, 9-6E, 9-6F, 9-7, 9-8, 9-8A, 9-32, 9-34A, 9-35, 9-35A, 9-36, 9-36B, 9-37, 9-38, 9-38A,
 2 9-39, 9-39B, 9-40, 9-40A, 9-40C, 9-41, 9-41A, 9-41B, 9-41C, 9-41D, 9-42C, 9-43A, 9-43B,
 3 9-43C, 9-43E, 9-43F, 9-43G, 9-43H, 9-43I, 9-43J, 9-43K, 9-43L, 9-43M, 9-43N, 9-44,
 4 9-44A, 9-44B, 9-44D, 9-44E, 9-44F, 9-44G, 9-44I, 9-44J, 9-44L, 9-44M, 9-44N, 9-44O,
 5 9-44P, 9-44Q, 9-45 and 9-45A of Orleans Parish and Precincts 802, 803, 809, 814, 904,
 6 907, 908, 909, 910, 911, 912, 921, S01, S02, S03, S04, S05, S06, S07, S08, S09, S10, S11,
 7 S12, S13, S15, S16, S17, S18, S19, S21, S22, S23, S24 and S25 of St. Tammany Parish.

8 (3) District 3 is composed of Precincts 225, 226, 227, 228, 229, 230, 231, 232A,
 9 1-G, 2-G, 3-G, 4-G, 5-G, 6-G, 7-G and 10-G of Jefferson Parish and Precincts 6-1, 6-2,
 10 6-4, 7-1, 7-2, 7-4, 7-6, 8-1, 8-2, 8-4, 8-6, 8-7, 8-8, 8-12, 8-19, 8-20, 8-21, 8-22, 8-23, 8-24,
 11 9-9, 9-10, 9-11, 9-12, 9-13, 9-14, 9-15, 9-16, 9-17, 9-19, 9-21, 9-23, 9-25, 9-26, 9-28, 9-28C,
 12 9-28E, 9-29, 9-30, 9-31, 15-1, 15-2, 15-3, 15-5, 15-6, 15-8, 15-9, 15-10, 15-11, 15-12,
 13 15-12A, 15-13, 15-13A, 15-13B, 15-14, 15-14A, 15-14B, 15-14C, 15-14D, 15-14E, 15-14F,
 14 15-14G, 15-15, 15-15A, 15-15B, 15-16, 15-17, 15-17A, 15-17B, 15-18, 15-18A, 15-18B,
 15 15-18C, 15-18D, 15-18F, 15-19, 15-19B and 15-19C of Orleans Parish.

16 (4) District 4 is composed of Precincts 3-3, 3-5, 3-8, 3-9, 3-12, 3-14, 3-15, 3-18,
 17 3-19, 3-20, 4-2, 4-3, 4-4, 4-5, 4-6, 4-7, 4-8, 4-9, 4-11, 4-14, 4-15, 4-17, 4-17A, 4-18, 4-20,
 18 4-21, 4-22, 4-23, 5-1, 5-2, 5-3, 5-4, 5-5, 5-7, 5-8, 5-9, 5-10, 5-11, 5-12, 5-13, 5-15, 5-16,
 19 5-17, 5-18, 6-6, 6-7, 6-8, 6-9, 7-5, 7-7, 7-8, 7-9A, 7-10, 7-11, 7-12, 7-13, 7-14, 7-15, 7-16,
 20 7-17, 7-18, 7-19, 7-20, 7-21, 7-23, 7-24, 7-25, 7-25A, 7-26, 7-27, 7-27B, 7-28, 7-28A, 7-29,
 21 7-30, 7-32, 7-33, 7-34, 7-35, 7-37, 7-37A, 7-40, 7-41, 7-42, 8-9, 8-13, 8-14, 8-15, 8-25, 8-26,
 22 8-27, 8-28, 8-30, 9-30A, 9-31A, 9-31B, 9-31D, 9-33, 9-42, 14-25, 14-26, 16-6, 16-7, 16-8,
 23 16-9, 17-2, 17-3, 17-4, 17-5, 17-6, 17-7, 17-8, 17-9, 17-10, 17-11, 17-12, 17-13, 17-13A,
 24 17-14, 17-15, 17-16, 17-17, 17-18, 17-18A, 17-19 and 17-20 of Orleans Parish.

25 (5) District 5 is composed of Precincts 171, 173, 180, 181, 187, 195, 196, 197C,
 26 200, 201, 205, 210, 211, 212A, 213A, 213B, 213C, 214A, 214B, 215, 216A, 216B, 217, 234,
 27 235, 236, 237, 238, 8-G, 9-G, 11-G, 12-G and 13-G of Jefferson Parish and Precincts 1-1,
 28 1-2, 1-5, 1-6, 2-1, 2-2, 2-3, 2-4, 2-6, 2-6A, 2-7, 3-1, 10-3, 10-6, 10-7, 10-8, 10-9, 10-11,
 29 10-12, 10-13, 10-14, 11-2, 11-3, 11-4, 11-5, 11-8, 11-9, 11-10, 11-11, 11-12, 11-13, 11-14,

1 11-17, 12-1, 12-2, 12-3, 12-4, 12-5, 12-6, 12-7, 12-8, 12-9, 12-10, 12-11, 12-12, 12-13,
 2 12-14, 12-16, 12-17, 12-19, 13-1, 13-11, 13-12, 13-13, 13-14, 13-15, 14-23 and 14-24A of
 3 Orleans Parish.

4 (6) District 6 is composed of Precincts 1-98, 2-6, 2-8, 3-1, 3-2, 3-3, 3-9, 3-12, 3-15,
 5 3-16, 3-21, 3-22, 3-25, 3-26, 3-28, 3-30, 3-32, 3-33, 3-34, 3-37, 3-38, 3-43, 3-45, 3-46, 3-47
 6 and 3-53 of East Baton Rouge Parish; Precincts 9 of Livingston Parish; Precincts 4-1,
 7 4-2 and 5-1 of St. Helena Parish and Precincts 40, 40A, 42, 42A, 45, 45A, 46, 47, 48, 49,
 8 70, 70A, 71, 72, 72A, 73, 74, 117, 121, 121A, 125, 127, 127A, 133, 133A, 137B, 139, 141,
 9 149A and 151 of Tangipahoa Parish.

10 (7) District 7 is composed of Precincts 152, 153, 154, 155, 170, 172, 174, 175, 176,
 11 177, 178, 179A, 179B, 182, 183, 184, 185A, 185B, 188, 189, 190, 191, 192, 193, 194A,
 12 194B, 197A, 197B, 198, 202, 203, 204, 212B, 232B, 1-W and 5-W of Jefferson Parish;
 13 Precincts 13-2, 13-3, 13-4, 13-5, 13-6, 13-7, 13-8, 13-9, 13-10, 13-16, 14-1, 14-2, 14-3,
 14 14-4, 14-5, 14-6, 14-7, 14-8, 14-9, 14-10, 14-11, 14-12, 14-13A, 14-14, 14-15, 14-16, 14-17,
 15 14-18A, 14-19, 14-20, 14-21, 15-18E, 15-19A, 16-1, 16-1A, 16-2, 16-3, 16-4, 16-5 and 17-1
 16 of Orleans Parish and Precincts 1-1, 1-2, 2-1, 3-1, 4-1, 5-1 and 5-2 of Plaquemines
 17 Parish.

18 (8) District 8 is composed of Precincts 36, 37, 39, 42, 44, 45, 47, 48, 49, 50, 51,
 19 52, 53, 54, 55, 56, 57 and 60 of Ascension Parish; Precincts 1-1, 1-2, 2-1, 2-2, 4-1, 4-2,
 20 5-1, 5-2, 6-1, 6-2 and 7-1 of Assumption Parish; Precincts 1, 2, 3, 6, 7, 8, 10, 11, 12, 13,
 21 13A, 13B, 13C, 14, 14A, 15, 16, 19, 19A, 20 and 23 of Iberville Parish; Precincts 1-2, 1-3,
 22 1-4, 2-1, 2-1A, 2-3, 2-3A, 2-4, 2-4A, 2-5, 2-7, 2-9, 2-10, 5-1, 5-1A and 5-1B of Lafourche
 23 Parish; Precincts 1-1 of St. Charles Parish; St. James Parish and Precincts 1-1, 1-2, 1-3,
 24 1-4, 1-5, 2-1, 2-2, 2-3, 2-4, 3-1, 3-2, 3-3, 3-4, 4-1, 4-3 and 4-9 of St. John the Baptist
 25 Parish.

26 (9) District 9 is composed of Precincts 3, 4, 5, 10, 11, 12, 13, 14, 15, 16, 17, 18,
 27 19, 20, 21, 22, 23, 24, 25, 26, 27, 28, 29, 30, 31, 32, 33, 34, 35, 36, 37, 38, 39, 40, 41, 42, 43,
 28 44, 45, 46, 60, 66, 69, 70, 71, 72, 73, 74, 75, 76, 77, 78, 79, 80, 81, 82, 83, 84, 85, 86, 87, 88,
 29 89, 90, 91, 92, 93, 94, 95, 96, 97, 98, 99, 100, 101, 102, 103, 106, 107, 127, 128, 129, 130,

131, 132, 133, 134, 136 and 138 of Jefferson Parish.

(10) District 10 is composed of Precincts 1, 2, 7, 8, 9, 51, 52, 53, 54, 55, 56, 57, 58, 59, 61, 62, 63, 64, 65, 67, 68, 105, 116, 117, 118, 119, 120, 121, 122, 123, 124, 125, 126, 1-H, 2-H, 3-H, 4-H, 5-H, 6-H, 7-H, 8-H, 9-H, 1-K, 2-K, 3-K, 4-K, 5-K, 6-K, 7-K, 8-K, 9-K, 10-K, 11-K, 12-K, 13-KA, 14-K, 15-K, 16-K, 17-K, 18-K, 19-K, 20-K, 25-K, 27-K, 28-K, 34-K and 35-K of Jefferson Parish.

(11) District 11 is composed of Precincts 101, 102, 103, 104, 105, 106, 107, 304, 305, 306, 307, 308, 309, 310, 311, 312, 313, 401, 402, 403, 404, 405, 406, 407, 408, 409, 410, 411, 412, 413, 414, 415, 416, 417, 418, 419, 420, 421, 422, 423, 424, 426, 427, 605, 607, 701, 702, 703, 704, A01, A02, A03, A04, C01, C02, C03, C04, C05, C06, C07, C08, C09, C10, C11, M01, M02, M03, M04, M05, M06, M07, M08, M09, M10 and MD1 of St. Tammany Parish and Precincts 120, 120B, 122, 122A, 124, 141A, 143 and 145 of Tangipahoa Parish.

(12) District 12 is composed of Precincts 201, 202, 203, 204, 205, 206, 207, 301, 302, 303, 501, 502, 503, 504, 505 and F01 of St. Tammany Parish; Precincts 1, 2, 6, 11, 15, 16, 17, 18, 26, 27, 27A, 28, 28A, 33, 41, 43, 44, 101, 102, 103, 104, 104A, 105, 106, 106A, 106B, 107, 108, 109, 109A, 110, 111, 111A, 112, 114, 115B, 116, 118, 119, 120A, 121B, 123, 129 and 129A of Tangipahoa Parish and Washington Parish.

(13) District 13 is composed of Precincts 3-6 and 3-14 of East Baton Rouge Parish; Precincts 1, 1A, 1B, 1C, 1D, 2, 2A, 3, 3A, 4, 4A, 5, 5A, 5B, 6, 6A, 6B, 7, 7A, 8A, 8B, 10, 11, 11A, 12, 13A, 13B, 19, 20, 23, 23A, 23B, 24, 24A, 24B, 24C, 24D, 25, 26, 26A, 26B, 26C, 27, 28A, 28B, 29, 30, 35, 35A, 36, 36A, 39, 39A, 40, 40A and 41 of Livingston Parish and Precincts 137, 137A, 137C, 137D and 149 of Tangipahoa Parish.

(14) District 14 is composed of Precincts 1-1, 1-3, 1-4, 1-5, 1-6, 1-10, 1-13, 1-14, 1-15, 1-16, 1-17, 1-18, 1-19, 1-21, 1-22, 1-23, 1-24, 1-25, 1-26, 1-27, 1-28, 1-29, 1-30, 1-31, 1-32, 1-36, 1-37, 1-38, 1-39, 1-45, 1-46, 1-50, 1-51, 1-57, 1-58, 1-59, 1-61, 1-62, 1-63, 1-64, 1-65, 1-67, 1-68, 1-73, 1-85, 1-100, 1-102, 1-107, 3-5, 3-20, 3-23, 3-44, 3-50 and 3-55 of East Baton Rouge Parish.

(15) District 15 is composed of Precincts 1-2, 1-54, 1-55, 1-60, 1-70, 1-71, 1-77,

1 1-78, 1-81, 1-82, 1-83, 1-84, 1-86, 1-87, 1-88, 1-91, 1-92, 1-93, 1-94, 1-95, 1-97, 1-101,
 2 1-104, 2-1, 2-2, 2-3, 2-4, 2-5, 2-9, 2-10, 2-11, 2-12, 2-13, 2-14, 2-15, 2-16, 2-17, 2-18, 2-19,
 3 2-20, 2-22, 2-23, 2-24, 2-25, 2-27, 2-30, 2-31, 3-8, 3-24, 3-42 and 3-54 of East Baton
 4 Rouge Parish.

5 (16) District 16 is composed of Precincts 1-7, 1-8, 1-9, 1-12, 1-33, 1-34, 1-35,
 6 1-40, 1-41, 1-42, 1-43, 1-44, 1-47, 1-48, 1-49, 1-52, 1-53, 1-56, 1-66, 1-69, 1-72, 1-74, 1-75,
 7 1-80, 1-89, 1-90, 1-99, 1-103, 1-105, 3-4, 3-7, 3-10, 3-11, 3-13, 3-17, 3-18, 3-19, 3-27, 3-29,
 8 3-31, 3-35, 3-36, 3-39, 3-40, 3-41, 3-48, 3-49, 3-51 and 3-52 of East Baton Rouge Parish.

9 (17) District 17 is composed of Precincts 2-3, 3-1, 3-2, 5-3, 5-4, 7-2, 8-1 and 9-1
 10 of Assumption Parish; Precincts 2-7, 2-21, 2-26, 2-28, 2-29 and 2-32 of East Baton
 11 Rouge Parish; East Feliciana Parish; Precincts 4, 5, 6A, 14B, 15A, 15B, 17, 17A, 18, 21,
 12 22, 24, 25, 25A, 25B, 26, 26A, 27, 28, 29, 30, 31 and 32 of Iberville Parish; Pointe
 13 Coupee Parish; Precincts 1-1, 1-2, 2-1, 2-2, 3-1, 3-2, 3-3, 5-2, 6-1 and 6-2 of St. Helena
 14 Parish; Precincts 1-2 and 1-5 of St. Martin Parish and West Baton Rouge Parish.

15 (18) District 18 is composed of Precincts 1, 2, 3, 4, 5, 6, 7, 8, 9, 10, 11, 12, 13, 14,
 16 15, 16, 17, 18, 19, 20, 21, 22, 23, 24, 25, 26, 27, 28, 30, 31, 32, 33, 34, 35, 40, 41, 43, 58 and
 17 61 of Ascension Parish and Precincts 7B, 14, 15, 16, 17, 18, 21, 22, 31, 32, 33, 34, 38 and
 18 43 of Livingston Parish.

19 (19) District 19 is composed of Precincts 104, 108, 115, 13-KB, 21-K, 22-K,
 20 23-K, 24-K, 26-K, 29-K, 30-K, 31-K and 33-K of Jefferson Parish; Precincts 3-1, 3-2,
 21 3-3, 3-4, 3-5, 3-6, 4-1, 6-3, 7-1, 7-2, 7-3 and 7-4 of Lafourche Parish; Precincts 1-2, 1-3,
 22 1-5, 1-6, 2-1, 2-2, 2-3, 2-4, 2-5, 3-1, 3-2, 3-3, 3-4, 3-5, 3-6, 4-1, 4-2, 4-3, 4-4, 5-1, 5-2, 5-3,
 23 5-4, 5-5, 6-1, 6-2, 6-3, 6-4, 6-5, 6-6, 6-7, 6-8, 7-1, 7-2, 7-3 and 7-4 of St. Charles Parish
 24 and Precincts 4-2, 4-4, 4-8, 5-1, 5-2, 5-3, 5-4, 5-5, 5-6, 5-7, 6-1, 6-3, 6-4, 7-2, 7-3, 7-4, 7-5
 25 and 7-7 of St. John the Baptist Parish.

26 (20) District 20 is composed of Precincts 2-12, 2-13, 2-14, 4-2, 4-3, 4-4, 4-5, 4-6,
 27 8-1, 9-1, 9-2, 10-1, 10-2, 10-3, 10-4, 10-5, 10-6, 10-7, 10-8, 10-9, 10-10, 10-11, 10-12,
 28 10-13, 10-14, 10-15, 10-16, 11-1, 11-2, 11-3 and 11-4 of Lafourche Parish and Precincts
 29 14, 19, 20, 21, 23, 24, 25, 27, 28, 29, 31, 32, 33, 34, 35, 36, 38, 40, 41, 42, 43, 44, 45, 46, 47,

1 48, 49, 52, 53, 54, 55, 56, 57, 58, 59, 60, 61, 62, 63, 68, 70, 71, 72, 73, 78, 80, 82, 83, 88 and
2 89 of Terrebonne Parish.

3 (21) District 21 is composed of Precincts 6-3, 11-1, 11-2, 11-3, 11-4, 11-5, 12-1,
4 12-2 and 12-3 of Iberia Parish; Precincts 1-1, 2-2, 2-6, 2-8, 2-11, 5-2, 6-1, 6-2 and 6-4 of
5 Lafourche Parish; St. Mary Parish and Precincts 1, 4, 5, 7, 8, 9, 10, 11, 12, 13, 15, 17,
6 18, 51, 64, 65, 66, 67, 69, 74, 76, 81, 84, 85, 86, 87 and 90 of Terrebonne Parish.

7 (22) District 22 is composed of Precincts 1-1, 1-2, 1-3, 2-1, 2-2, 2-3, 3-1, 3-2, 3-3,
8 3-4, 4-1, 4-2, 4-3, 4-4, 5-1, 5-2, 5-3, 5-4, 5-5, 6-1, 6-2, 6-4, 7-1, 7-2, 7-3, 7-4, 7-5, 8-1, 8-2,
9 8-4, 8-5, 9-1, 9-2, 9-3, 9-4, 9-5, 10-2, 10-3, 10-4, 10-5, 10-6, 10-7, 12-4, 13-1, 13-2, 13-3,
10 13-4, 14-1, 14-3 and 14-4 of Iberia Parish; Precincts 99 and 100 of Lafayette Parish;
11 Precincts 3-1, 3-3, 3-5, 4-5, 4-7, 4-12 and 4-13 of St. Landry Parish and Precincts 1-1,
12 1-3, 1-4, 1-7, 2-1, 2-2, 2-3, 2-4, 3-1, 3-1A, 3-1B, 3-2, 3-3, 3-4, 3-4A, 3-5, 3-6, 3-9, 4-1,
13 4-1A, 4-2, 4-3, 4-4, 4-4A, 4-5, 4-6, 5-1, 5-2, 5-3, 5-4, 6-1, 6-2, 6-3, 6-3A, 6-3B, 6-4, 7-1A,
14 7-2A, 7-4, 7-4A, 8-1, 8-3, 8-4, 8-4A, 9-1, 9-2, 9-3, 9-4 and 9-5 of St. Martin Parish.

15 (23) District 23 is composed of Precincts 30A, 33, 34, 38, 39, 40, 41, 42, 43, 44,
16 45, 46, 47, 48, 49, 60, 65, 66, 67, 69, 70, 72, 73, 74, 75, 76, 77, 78, 79, 80, 81, 82, 83, 84, 85,
17 86, 87, 88, 89, 90, 91, 92, 93, 94, 95, 96, 97A, 97B, 98, 101, 102, 103, 104, 105, 106, 107,
18 108, 109, 110 and 111 of Lafayette Parish.

19 (24) District 24 is composed of Precincts 2, 4, 5, 6, 7, 9, 10, 11, 12, 13, 14, 15, 16,
20 17, 18, 19, 20, 21, 22, 23, 24, 25, 50, 51, 52, 53, 54, 55, 56, 57, 58, 59, 61, 62, 63, 64 and
21 68 of Lafayette Parish; Precincts 1-1, 1-2, 1-2A, 1-3, 1-3A, 1-4, 1-4A, 1-6, 1-7, 1-8, 1-9,
22 1-10, 1-11, 1-12, 1-13, 1-14, 1-15, 1-15A, 1-16, 1-17, 1-18, 1-20, 1-21, 1-22, 1-23, 1-25,
23 1-26, 1-26A, 1-28, 1-28A, 1-29, 2-1, 2-4, 3-2, 3-4, 3-6, 4-2, 4-3, 4-4, 4-6, 4-8, 4-9, 4-10,
24 4-11, 4-12A, 5-3, 5-6 (Part) except that portion north of state Highway 103 and west of
25 Interstate Highway 49; 6-1, 6-3, 6-4, 6-10, 6-11A, 6-15 and 6-16 of St. Landry Parish
26 and Precincts 6-2A, 7-1 and 7-3 of St. Martin Parish.

27 (25) District 25 is composed of Precincts 2-2, 2-3, 2-4, 2-5, 4-1, 4-2, 4-3, 4-4, 4-5,
28 4-6, 5-1A, 5-1B, 5-2A, 5-2B, 5-3, 5-4, 5-5, 6-1, 6-2, 6-3A, 6-3B, 6-4, 6-5, 6-6, 6-7, 6-8, 6-9,
29 6-10, 6-11, 6-12, 6-13, 6-14, 6-15 and 6-16 of Acadia Parish; Precincts 260, 261, 262, 333,

1 336, 337, 338, 339, 362, 363, 364, 365, 366, 367N, 367S, 368, 369, 370, 371N, 371S, 800,
 2 801, 860N, 860S, 861E and 861W of Calcasieu Parish; Cameron Parish and Jefferson
 3 Davis Parish.

4 (26) District 26 is composed of Precincts 1-1, 1-2A, 1-2B, 1-3A, 1-3B, 1-4A, 1-4B,
 5 1-5A, 1-5B, 1-6, 1-7, 1-8, 1-9, 2-1, 3-1, 3-3A, 3-3B, 3-4, 3-6 and 3-7 of Acadia Parish;
 6 Precincts 1, 3, 8, 26, 27, 28A, 28B, 29, 31, 32, 35, 36, 37 and 71 of Lafayette Parish;
 7 Precincts 2-2, 2-3, 2-5, 2-6, 2-7, 2-8 and 2-9 of St. Landry Parish and Vermilion Parish.

8 (27) District 27 is composed of Precincts 162E, 162W, 163, 164, 165, 166, 167,
 9 300, 301, 302, 303, 304, 305, 306, 307, 308, 309E, 309W, 310, 311, 312, 313E, 313W, 314,
 10 315E, 315W, 316E, 316W, 317, 318, 319, 320, 321, 322, 323, 324, 325, 326, 327, 328, 329,
 11 330, 331, 332N, 332S, 334, 335, 360, 361, 400, 401, 402, 403, 404, 405, 406, 407, 408, 440,
 12 441, 461, 462, 463, 464, 466E, 466W, 467 and 468 of Calcasieu Parish.

13 (28) District 28 is composed of Precincts 3-2, 3-5, 7-2, 7-3 and 7-4 of Acadia
 14 Parish; Allen Parish; Precincts 2-1A, 2-2B, 2-4A, 2-4B, 2-4D, 2-5C, 2-7, 2-8, 3-1A, 3-1B,
 15 3-1C, 3-3A, 4-1, 4-2, 5-1, 7-1, 7-2, 7-3, 8-1, 8-2A, 8-2B, 8-3A, 9-1A, 9-1C, 9-2, 9-3A, 9-4A,
 16 9-5C, 9-6A, 9-6B, 10-2B, 10-2C, 10-3A, 10-3D, 10-4 and 10-5C of Avoyelles Parish;
 17 Evangeline Parish; Precincts 1-5, 1-19, 1-24, 5-1, 5-2, 5-4, 5-5, 5-6 (Part) Tract 960200
 18 - Blocks 1012, 1013, 1014, 1015, 1016, 1017 and 5-8, 6-2, 6-5, 6-6, 6-7, 6-8, 6-9, 6-11,
 19 6-13, 6-14 and 6-16A of St. Landry Parish.

20 (29) District 29 is composed of Precincts 3-1, 3-9, 3-10, 4-6 and 4-7 of
 21 Natchitoches Parish; Precincts C17, C18, C19, C22, C23, C26, C27, C30, C31, C32,
 22 C33, C34, C35, C36, C37, C38, C40, C41, C42, N5, N6, N7, N8, N9, N10, N11, N12, N13,
 23 N14, N15, N16, N17, N18, N19, N22, N26, N27, N28, N29, S2, S7, S8, S9, S10, S11, S13,
 24 S14, S15, S16, S17, S18, S19, S20, S21, S22, S23, S24, S25, S26, S27, S28 and S29 of
 25 Rapides Parish; Sabine Parish and Precincts 6-1, 6-2, 6-3 and 6-4 of Vernon Parish.

26 (30) District 30 is composed of Beauregard Parish; Precincts 160E, 160W, 161,
 27 460E, 460W, 465, 469, 560, 561, 562, 600, 601, 602, 603, 660, 661, 662, 663, 664, 700,
 28 701, 702, 703, 760, 761 and 762 of Calcasieu Parish and Precincts 1-1, 1-1B, 1-2, 1-2A,
 29 1-3, 1-3B, 1-3C, 1-3D, 1-4, 1-4A, 1-4B, 1-4C, 1-4D, 1-5, 1-5A, 1-6, 1-6A, 1-6B, 1-7, 1-7A,

1 1-7B, 1-8, 1-8A, 1-8C, 1-8E, 1-8F, 1-9, 2-1, 2-1A, 2-2, 2-2A, 2-3, 2-3A, 2-4, 2-4E, 3-1, 3-2,
 2 3-3, 3-4, 3-5, 4-1, 4-2, 4-3, 4-3A, 4-3C, 4-3E, 4-3F, 4-3G, 4-3J, 4-3K, 4-3L, 4-3M, 4-3N,
 3 5-1, 5-1A, 5-2, 5-2A, 7-1, 7-2, 7-2A, 7-3, 7-4, 7-4A, 7-5, 7-5A, 7-5C, 8-1, 8-2 and 8-3 of
 4 Vernon Parish.

5 (31) District 31 is composed of Bienville Parish; Precincts 2-1, 3-2 and 3-3 of
 6 Grant Parish; Precincts 1-1, 1-2, 1-3, 2-1, 2-2, 3-1, 3-3, 6-2, 9-1, 10-1, 10-2, 10-3, 10-5,
 7 11-1, 11-2, 11-3, 12-1 and 12-2 of Lincoln Parish; Precincts 1-1, 1-3, 1-3A, 1-4, 1-4B, 1-5,
 8 1-5A, 1-6, 1-8, 1-9A, 1-10A, 1-11, 1-13, 3-2, 3-3, 3-4, 3-5, 3-6, 3-7, 3-8, 4-1, 4-2, 4-3, 4-4,
 9 4-5 and 4-8 of Natchitoches Parish; Precincts C1, C2, C3, C4, C5, C6, C7, C8, C9, C10,
 10 C11, C13, C14, C15, C20, C21, C24, C25, C28, C39, N1, N2, N3, N4, N20, N21, S1, S4,
 11 S5 and S6 of Rapides Parish and Red River Parish.

12 (32) District 32 is composed of Precincts 1-1, 1-2, 2-2A, 2-2C, 2-3A, 2-5A, 2-5B,
 13 3-3D, 5-2, 6-1A, 6-2A, 7-3A, 11-1 and 11-2A of Avoyelles Parish; Caldwell Parish;
 14 Catahoula Parish; Precincts 1-3 (Part) that portion of north West of U.S. Highway 65;
 15 3-1, 3-2, 3-3, 4-1, 4-2, 4-3, 4-4, 4-6, 5-2, 5-3, 5-4, 5-5, 5-6 and 5-7 of Concordia Parish;
 16 Franklin Parish; La Salle Parish; Precincts 25, 26, 56, 57 and 58 of Ouachita Parish;
 17 Precincts N23, N24 and N25 of Rapides Parish; Precincts 1, 2, 3, 4, 5, 6, 7, 8, 9 and 10
 18 of Richland Parish and West Feliciana Parish.

19 (33) District 33 is composed of Precincts 2, 3, 4, 6, 20, 21, 22, 23, 24, 25, 26, 27,
 20 28, 29, 30, 34, 35, 39, 40, 41, 42, 43, 44, 45, 47, 48, 49, 50, 51, 53 and 54 of Morehouse
 21 Parish; Precincts 1, 2, 4, 5, 6, 7, 8, 32, 33, 35, 36, 37, 38, 41, 42, 43, 44, 44A, 45, 46, 49,
 22 50, 51, 52, 53, 64, 71, 75, 76 and 77 of Ouachita Parish; Precincts 2, 3, 4, 5, 6, 7, 8, 9, 10,
 23 11, 12, 13, 14, 15, 16, 17, 18, 19, 20, 21, 22, 23, 24, 25, 26, 27, 28 and 29 of Union Parish
 24 and West Carroll Parish.

25 (34) District 34 is composed of Precincts 1-1, 1-2, 1-3 (Part) that portion
 26 southeast of U.S. Highway 65; 1-4, 2-1, 2-4 and 5-1 of Concordia Parish; East Carroll
 27 Parish; Madison Parish; Precincts 1, 5, 7, 8, 9, 10, 12, 13, 14, 15, 16, 17, 18, 31, 33, 36,
 28 37, 38, 52 and 55 of Morehouse Parish; Precincts 3, 9, 9A, 10, 11, 12, 13, 14, 15, 16, 17,
 29 18, 19, 20, 21, 22, 23, 24, 27, 28, 29, 30, 60, 63, 65, 66, 67, 68, 69, 70, 72, 73, 74 and 79 of

1 Ouachita Parish; Precincts 11, 12, 13, 14, 15, 16, 17, 18, 19, 20, 21, 22, 23, 24, 25, 26, 27,
2 28, 29, 30, 31, 32, 33, 34 and 35 of Richland Parish and Tensas Parish.

3 (35) District 35 is composed of Precincts 1-1, 1-2, 1-3, 2-2, 2-3, 3-1, 4-1, 4-2, 5-1,
4 5-2, 6-1, 6-2, 6-3, 7-1, 7-2, 7-3, 7-4, 8-1, 8-2 and 8-3 of Grant Parish; Jackson Parish;
5 Precincts 3-2, 3-4, 3-5, 4-1, 4-2, 4-3, 4-4, 4-5, 5-1, 5-2, 5-3, 5-4, 6-1, 6-3, 6-4, 6-5, 7-1, 7-2,
6 8-1, 8-2, 8-3, 9-2, 9-3 and 10-4 of Lincoln Parish; Precincts 1-1A, 1-2, 1-4A, 1-7, 1-9,
7 1-10, 1-10B, 1-12, 1-14, 2-1, 2-2, 2-3, 2-4, 2-5, 2-6, 2-7, 2-7A, 2-8, 2-9 and 4-9 of
8 Natchitoches Parish; Precincts 31, 34, 39, 40, 47, 48, 54, 55, 59, 61, 62 and 78 of
9 Ouachita Parish and Winn Parish.

10 (36) District 36 is composed of Precincts 2-1, 2-17A, 2-18A, 2-18B, 2-18C, 2-21A,
11 2-21B, 2-21C, 2-21D, 2-22A, 2-22B, 3-1, 3-2, 3-3, 3-4, 4-1A, 4-2, 4-3A, 4-3B, 4-3C, 4-4A,
12 4-4B, 4-5A, 4-6, 4-7, 4-9, 4-11A, 4-11B and 4-11C of Bossier Parish; Claiborne Parish;
13 Precincts 1 of Union Parish and Webster Parish.

14 (37) District 37 is composed of Precincts 1-1, 1-2, 1-3, 1-3A, 1-4, 1-4A, 1-5, 2-2,
15 2-3, 2-4, 2-5, 2-6, 2-7, 2-8, 2-9, 2-10, 2-11, 2-11A, 2-12A, 2-12B, 2-12C, 2-13, 2-14, 2-15,
16 2-16, 2-16A, 2-17B, 2-19, 2-20, 2-23, 4-8A, 4-8B, 4-8C, 4-8D and 4-10 of Bossier Parish
17 and Precincts 6, 7, 8, 9, 10, 11, 12, 13, 14, 15, 16, 17, 20, 21, 22, 24, 26, 27, 48, 49, 64, 76,
18 77, 99, 102, 104, 109 and 129 of Caddo Parish.

19 (38) District 38 is composed of Precincts 4, 56, 62, 63, 65, 66, 68, 72, 75, 78, 79,
20 84, 85, 87, 88, 89, 90, 91, 92, 93, 94, 95, 97, 100, 101, 103, 105, 107, 108, 110, 122, 123,
21 125, 126, 127, 128, 132, 133, 134 and 159 of Caddo Parish and De Soto Parish.

22 (39) District 39 is composed of Precincts 1, 2, 3, 5, 23, 25, 28, 29, 30, 31, 32, 34,
23 35, 36, 37, 38, 39, 40, 41, 42, 43, 44, 45, 46, 47, 50, 51, 52, 53, 54, 55, 57, 58, 59, 60, 61, 67,
24 69, 70, 71, 73, 74, 80, 81, 82, 83, 86, 98, 106, 130, 135, 136, 137, 138, 139, 140, 142, 143,
25 144, 145, 146, 149, 150, 151, 154, 155, 156, 157 and 158 of Caddo Parish.

26 B. The precincts referenced in this Section are those precincts identified as
27 Voting Districts (VTDs) in the 2010 Census Redistricting TIGER/Line Shapefiles for
28 the State of Louisiana.

29 C. When a precinct referenced in this Section has been subdivided by action of

1 **the parish governing authority on a nongeographic basis or subdivided by action of the**
2 **parish governing authority on a geographic basis in accordance with the provisions of**
3 **R.S. 18:532.1, the enumeration in this Section of the general precinct designation shall**
4 **include all nongeographic and all geographic subdivisions thereof, however such**
5 **subdivisions may be designated. The territorial limits of the districts as provided in this**
6 **Section shall continue in effect without change regardless of any changes made to the**
7 **precincts by the parish governing authority.**

8 Section 2.(A) The provisions of Section 1 of this Act shall be effective for the limited
9 purposes of qualifying candidates for and electing members to the Senate of the Legislature
10 of Louisiana at the next regularly scheduled election for members of the Senate in 2011,
11 commencing on the date and at the time that the qualifying period opens for such offices.
12 The effectiveness of Section 1 of this Act for such qualification and election shall not reduce
13 the term of office of any member of the Senate nor change any Senate district as established
14 in R.S. 24:35.1 until such provisions of law are repealed pursuant to Section 4 of this Act.

15 (B) Except as provided in Subsection A of this Section, the provisions of Section 1
16 of this Act shall be effective at 10:00 a.m. on January 9, 2012.

17 Section 3. A vacancy in the office of a member elected to serve a term of office
18 commencing at 10:00 a.m. on January 9, 2012, shall be filled, as required by law from the
19 district created by Section 1 of this Act from which the member was elected.

20 Section 4. R.S. 24:35.1 is hereby repealed, effective at 10:00 a.m., January 9, 2012.

21 Section 5. The provisions of this Section and Sections 2 and 3 of this Act shall
22 become effective upon signature by the governor or, if not signed by the governor, upon
23 expiration of the time for bills to become law without signature by the governor, as provided
24 by Article III, Section 18 of the Constitution of Louisiana. If vetoed by the governor and
25 subsequently approved by the legislature, this Act shall become effective on the day
26 following such approval.

The original instrument and the following digest, which constitutes no part of the legislative instrument, were prepared by Yolanda J. Dixon.

DIGEST

Proposed law redistricts the thirty-nine present La. Senate districts.

Effective upon signature of the governor or lapse of time for gubernatorial action.

(Adds R.S. 24:35; repeals R.S. 24:35.1)

Plan Statistics

<u>Districts:</u>	<u># of Members</u>	<u>Actual Population</u>	<u>Ideal Population</u>	<u>Absolute Deviation</u>	<u>Relative Deviation</u>
District 1	1	120,406	116,240	4,166	3.584%
District 2	1	118,168	116,240	1,928	1.659%
District 3	1	111,053	116,240	-5,187	-4.462%
District 4	1	111,267	116,240	-4,973	-4.278%
District 5	1	116,052	116,240	-188	-0.162%
District 6	1	120,032	116,240	3,792	3.262%
District 7	1	116,577	116,240	337	0.290%
District 8	1	110,347	116,240	-5,893	-5.070%
District 9	1	114,028	116,240	-2,212	-1.903%
District 10	1	112,039	116,240	-4,201	-3.614%
District 11	1	121,670	116,240	5,430	4.671%
District 12	1	121,321	116,240	5,081	4.371%
District 13	1	118,958	116,240	2,718	2.338%
District 14	1	115,785	116,240	-455	-0.391%
District 15	1	118,058	116,240	1,818	1.564%
District 16	1	118,106	116,240	1,866	1.605%
District 17	1	116,923	116,240	683	0.588%
District 18	1	110,908	116,240	-5,332	-4.587%
District 19	1	111,046	116,240	-5,194	-4.468%
District 20	1	116,242	116,240	2	0.002%
District 21	1	121,985	116,240	5,745	4.942%
District 22	1	121,775	116,240	5,535	4.762%
District 23	1	120,896	116,240	4,656	4.006%
District 24	1	121,168	116,240	4,928	4.240%
District 25	1	120,244	116,240	4,004	3.445%
District 26	1	121,256	116,240	5,016	4.315%
District 27	1	118,161	116,240	1,921	1.653%
District 28	1	113,848	116,240	-2,392	-2.058%
District 29	1	112,039	116,240	-4,201	-3.614%
District 30	1	112,474	116,240	-3,766	-3.240%
District 31	1	111,156	116,240	-5,084	-4.374%
District 32	1	116,009	116,240	-231	-0.199%
District 33	1	115,023	116,240	-1,217	-1.047%
District 34	1	118,551	116,240	2,311	1.988%
District 35	1	112,333	116,240	-3,907	-3.361%
District 36	1	116,928	116,240	688	0.592%
District 37	1	110,770	116,240	-5,470	-4.706%
District 38	1	111,806	116,240	-4,434	-3.815%
District 39	1	117,964	116,240	1,724	1.483%

Grand Total:	39	4,533,372	4,533,360
---------------------	-----------	------------------	------------------

Ideal Population Per Member:	116240
Number of Districts for Plan Type:	39
Range of District Populations:	110,347 to 121,985
Absolute Mean Deviation:	298
Absolute Range:	-5,893 to 5,745
Absolute Overall Range:	11,638
Relative Mean Deviation:	2.84%
Relative Range:	-5.07% to 4.94%
Relative Overall Range:	10.01%

<i>Ideal - Actual:</i>	-12
<i>Remainder:</i>	12
<i>Unassigned Population:</i>	0

Total Population

	Total Population	Total White	Total Black	Total Asian	Total American Indian	Total Other	Total Hispanic	Reg Total Jan 2011
District 1	120,406	87,695	24,371	3,460	1,861	3,019	7,839	75,064
	100.000%	72.833%	20.241%	2.874%	1.546%	2.507%	6.510%	83.951%
District 2	118,168	40,579	68,359	6,027	682	2,521	5,002	69,265
	100.000%	34.340%	57.849%	5.100%	0.577%	2.133%	4.233%	79.593%
District 3	111,053	37,140	66,723	2,457	780	3,953	8,744	63,935
	100.000%	33.443%	60.082%	2.212%	0.702%	3.560%	7.874%	75.244%
District 4	111,267	38,209	67,833	1,894	479	2,852	6,988	66,339
	100.000%	34.340%	60.964%	1.702%	0.430%	2.563%	6.280%	75.185%
District 5	116,052	42,017	63,771	5,283	734	4,247	9,898	70,514
	100.000%	36.205%	54.950%	4.552%	0.632%	3.660%	8.529%	77.938%
District 6	120,032	83,460	31,479	2,268	752	2,073	4,677	72,879
	100.000%	69.531%	26.226%	1.889%	0.626%	1.727%	3.896%	80.321%
District 7	116,577	78,606	28,767	5,303	1,207	2,694	7,762	72,995
	100.000%	67.428%	24.676%	4.549%	1.035%	2.311%	6.658%	80.405%
District 8	110,347	44,646	63,812	449	443	997	2,366	67,682
	100.000%	40.460%	57.828%	0.407%	0.401%	0.904%	2.144%	82.054%
District 9	114,028	90,564	12,947	4,421	666	5,430	14,103	68,212
	100.000%	79.423%	11.354%	3.877%	0.584%	4.762%	12.368%	73.616%
District 10	112,039	87,958	12,964	4,319	729	6,069	17,700	65,957
	100.000%	78.507%	11.571%	3.855%	0.651%	5.417%	15.798%	74.193%
District 11	121,670	106,436	10,691	1,760	1,046	1,737	5,460	76,697
	100.000%	87.479%	8.787%	1.447%	0.860%	1.428%	4.488%	85.872%
District 12	121,321	83,996	34,634	613	873	1,205	3,236	69,612
	100.000%	69.235%	28.547%	0.505%	0.720%	0.993%	2.667%	76.329%
District 13	118,958	109,766	5,973	864	953	1,402	3,560	67,456
	100.000%	92.273%	5.021%	0.726%	0.801%	1.179%	2.993%	78.376%
District 14	115,785	33,912	75,627	4,112	424	1,710	3,981	59,935
	100.000%	29.289%	65.317%	3.551%	0.366%	1.477%	3.438%	67.300%
District 15	118,058	25,562	87,054	2,770	420	2,252	4,265	63,920
	100.000%	21.652%	73.738%	2.346%	0.356%	1.908%	3.613%	75.096%
District 16	118,106	89,139	21,736	4,739	504	1,988	5,231	71,600
	100.000%	75.474%	18.404%	4.012%	0.427%	1.683%	4.429%	74.714%
District 17	116,923	73,835	41,079	501	636	872	2,119	77,222
	100.000%	63.148%	35.133%	0.428%	0.544%	0.746%	1.812%	86.756%
District 18	110,908	93,181	13,442	1,315	713	2,257	4,955	65,234
	100.000%	84.016%	12.120%	1.186%	0.643%	2.035%	4.468%	81.994%
District 19	111,046	66,479	39,091	1,085	886	3,505	7,837	64,767
	100.000%	59.866%	35.203%	0.977%	0.798%	3.156%	7.057%	79.486%
District 20	116,242	86,314	16,209	1,219	9,015	3,485	5,524	60,955
	100.000%	74.254%	13.944%	1.049%	7.755%	2.998%	4.752%	70.502%
District 21	121,985	81,700	33,232	1,854	2,718	2,481	4,854	70,508
	100.000%	66.975%	27.243%	1.520%	2.228%	2.034%	3.979%	77.811%
District 22	121,775	83,111	33,720	2,383	770	1,791	3,230	77,122
	100.000%	68.250%	27.690%	1.957%	0.632%	1.471%	2.652%	86.292%
District 23	120,896	100,058	14,929	3,137	765	2,007	4,750	72,241
	100.000%	82.764%	12.349%	2.595%	0.633%	1.660%	3.929%	76.941%
District 24	121,168	49,875	68,581	639	590	1,483	2,688	78,096
	100.000%	41.162%	56.600%	0.527%	0.487%	1.224%	2.218%	88.746%
District 25	120,244	98,518	18,230	1,427	918	1,151	2,448	74,571
	100.000%	81.932%	15.161%	1.187%	0.763%	0.957%	2.036%	83.910%
District 26	121,256	94,618	22,371	1,715	704	1,848	3,889	70,537
	100.000%	78.032%	18.449%	1.414%	0.581%	1.524%	3.207%	79.560%
District 27	118,161	73,635	40,862	1,261	899	1,504	3,189	72,724
	100.000%	62.318%	34.582%	1.067%	0.761%	1.273%	2.699%	82.470%
District 28	113,848	78,300	32,409	610	1,528	1,001	2,107	65,900
	100.000%	68.776%	28.467%	0.536%	1.342%	0.879%	1.851%	77.443%
District 29	112,039	86,738	18,362	1,583	4,030	1,326	3,592	65,957
	100.000%	77.418%	16.389%	1.413%	3.597%	1.184%	3.206%	77.901%
District 30	112,474	90,531	15,697	1,857	2,100	2,289	5,244	56,196
	100.000%	80.491%	13.956%	1.651%	1.867%	2.035%	4.662%	68.345%
District 31	111,156	41,092	66,994	1,001	998	1,071	1,958	63,376
	100.000%	36.968%	60.270%	0.901%	0.898%	0.964%	1.761%	76.184%
District 32	116,009	86,729	27,597	309	804	570	1,624	68,191
	100.000%	74.761%	23.789%	0.266%	0.693%	0.491%	1.400%	76.832%
District 33	115,023	92,091	19,902	1,175	581	1,274	2,570	75,176
	100.000%	80.063%	17.303%	1.022%	0.505%	1.108%	2.234%	86.422%
District 34	118,551	35,542	81,122	783	427	677	1,631	73,233
	100.000%	29.980%	68.428%	0.660%	0.360%	0.571%	1.376%	85.085%
District 35	112,333	84,521	24,737	916	1,127	1,032	2,873	64,760
	100.000%	75.241%	22.021%	0.815%	1.003%	0.919%	2.558%	74.362%

Total Population

	Total Population	Total White	Total Black	Total Asian	Total American Indian	Total Other	Total Hispanic	Reg Total Jan 2011
District 36	116,928	81,462	32,395	1,048	993	1,030	2,869	66,263
	100.000%	69.669%	27.705%	0.896%	0.849%	0.881%	2.454%	74.768%
District 37	110,770	76,100	27,315	2,996	999	3,360	6,896	59,440
	100.000%	68.701%	24.659%	2.705%	0.902%	3.033%	6.226%	69.997%
District 38	111,806	67,927	40,025	1,504	1,129	1,221	3,048	67,536
	100.000%	60.754%	35.799%	1.345%	1.010%	1.092%	2.726%	79.455%
District 39	117,964	34,150	81,843	494	670	807	1,853	68,308
	100.000%	28.950%	69.380%	0.419%	0.568%	0.684%	1.571%	79.083%
Grand Total	4,533,372	2,836,192	1,486,885	81,551	46,553	82,191	192,560	2,680,375
	100.000%	62.563%	32.799%	1.799%	1.027%	1.813%	4.248%	78.480%

Voter Registration

	Reg Total Jan 2011	Reg White Jan 2011	Reg Black Jan 2011	Reg Other Jan 2011	Reg Dem Total Jan 2011	Reg Rep Total Jan 2011	Reg Other Total Jan 2011
District 1	75,064	57,874	12,230	4,960	34,001	20,362	20,701
	83.951%	77.100%	16.293%	6.608%	45.296%	27.126%	27.578%
District 2	69,265	24,460	39,677	5,128	41,511	12,843	14,911
	79.593%	35.314%	57.283%	7.403%	59.931%	18.542%	21.527%
District 3	63,935	23,276	35,768	4,891	40,717	8,531	14,687
	75.244%	36.406%	55.944%	7.650%	63.685%	13.343%	22.972%
District 4	66,339	22,737	39,560	4,042	44,022	8,341	13,976
	75.185%	34.274%	59.633%	6.093%	66.359%	12.573%	21.068%
District 5	70,514	24,719	39,419	6,376	43,281	9,324	17,909
	77.938%	35.055%	55.902%	9.042%	61.379%	13.223%	25.398%
District 6	72,879	55,424	14,833	2,622	30,023	25,619	17,237
	80.321%	76.049%	20.353%	3.598%	41.196%	35.153%	23.652%
District 7	72,995	49,292	17,399	6,304	35,146	17,702	20,147
	80.405%	67.528%	23.836%	8.636%	48.149%	24.251%	27.601%
District 8	67,682	28,156	38,378	1,148	49,162	7,897	10,623
	82.054%	41.600%	56.703%	1.696%	72.637%	11.668%	15.695%
District 9	68,212	58,441	4,666	5,105	23,323	28,834	16,055
	73.616%	85.676%	6.840%	7.484%	34.192%	42.271%	23.537%
District 10	65,957	54,191	4,833	6,933	22,370	26,902	16,685
	74.193%	82.161%	7.328%	10.511%	33.916%	40.787%	25.297%
District 11	76,697	67,686	4,921	4,090	19,653	37,817	19,227
	85.872%	88.251%	6.416%	5.333%	25.624%	49.307%	25.069%
District 12	69,612	50,528	17,270	1,814	35,885	18,797	14,930
	76.329%	72.585%	24.809%	2.606%	51.550%	27.003%	21.447%
District 13	67,456	63,174	2,306	1,976	23,169	26,324	17,963
	78.376%	93.652%	3.419%	2.929%	34.347%	39.024%	26.629%
District 14	59,935	15,455	41,867	2,613	39,130	8,249	12,556
	67.300%	25.786%	69.854%	4.360%	65.287%	13.763%	20.949%
District 15	63,920	17,196	44,452	2,272	44,469	8,096	11,355
	75.096%	26.902%	69.543%	3.554%	69.570%	12.666%	17.764%
District 16	71,600	59,313	8,545	3,742	23,763	31,437	16,400
	74.714%	82.839%	11.934%	5.226%	33.189%	43.906%	22.905%
District 17	77,222	50,062	25,614	1,546	47,886	15,341	13,995
	86.756%	64.829%	33.169%	2.002%	62.011%	19.866%	18.123%
District 18	65,234	55,927	6,615	2,692	25,857	21,902	17,475
	81.994%	85.733%	10.140%	4.127%	39.637%	33.575%	26.788%
District 19	64,767	40,977	20,770	3,020	33,701	15,557	15,509
	79.486%	63.268%	32.069%	4.663%	52.034%	24.020%	23.946%
District 20	60,955	49,747	7,591	3,617	30,449	14,878	15,628
	70.502%	81.613%	12.453%	5.934%	49.953%	24.408%	25.639%
District 21	70,508	49,946	18,044	2,518	34,383	19,150	16,975
	77.811%	70.837%	25.591%	3.571%	48.765%	27.160%	24.075%
District 22	77,122	55,055	19,805	2,262	41,429	19,653	16,040
	86.292%	71.387%	25.680%	2.933%	53.719%	25.483%	20.798%
District 23	72,241	63,077	5,836	3,328	22,098	31,337	18,806
	76.941%	87.315%	8.079%	4.607%	30.589%	43.378%	26.032%
District 24	78,096	33,503	42,523	2,070	49,535	12,740	15,821
	88.746%	42.900%	54.450%	2.651%	63.428%	16.313%	20.258%
District 25	74,571	62,914	9,867	1,790	38,581	18,756	17,234
	83.910%	84.368%	13.232%	2.400%	51.737%	25.152%	23.111%
District 26	70,537	57,587	11,267	1,683	37,523	16,261	16,753
	79.560%	81.641%	15.973%	2.386%	53.196%	23.053%	23.751%
District 27	72,724	46,996	23,361	2,367	38,787	16,335	17,602
	82.470%	64.622%	32.123%	3.255%	53.335%	22.462%	24.204%
District 28	65,900	48,158	16,436	1,306	42,119	11,918	11,863
	77.443%	73.077%	24.941%	1.982%	63.914%	18.085%	18.002%
District 29	65,957	55,063	7,965	2,929	29,386	21,732	14,839
	77.901%	83.483%	12.076%	4.441%	44.553%	32.949%	22.498%
District 30	56,196	47,608	6,053	2,535	26,075	15,026	15,095
	68.345%	84.718%	10.771%	4.511%	46.400%	26.739%	26.861%
District 31	63,376	25,140	36,482	1,754	40,394	10,572	12,410
	76.184%	39.668%	57.564%	2.768%	63.737%	16.681%	19.582%
District 32	68,191	54,540	12,752	898	35,806	18,826	13,560
	76.832%	79.981%	18.700%	1.317%	52.508%	27.608%	19.885%
District 33	75,176	62,312	10,791	2,073	28,295	30,324	16,557
	86.422%	82.888%	14.354%	2.758%	37.638%	40.337%	22.024%
District 34	73,233	22,706	48,693	1,835	48,130	11,022	14,080
	85.085%	31.005%	66.491%	2.506%	65.722%	15.051%	19.226%
District 35	64,760	51,269	11,755	1,736	28,752	21,421	14,587
	74.362%	79.168%	18.152%	2.681%	44.398%	33.078%	22.525%

Voter Registration

	Reg Total Jan 2011	Reg White Jan 2011	Reg Black Jan 2011	Reg Other Jan 2011	Reg Dem Total Jan 2011	Reg Rep Total Jan 2011	Reg Other Total Jan 2011
District 36	66,263	48,278	16,307	1,678	27,907	23,306	15,050
	74.768%	72.858%	24.610%	2.532%	42.116%	35.172%	22.713%
District 37	59,440	44,890	11,682	2,868	21,425	23,612	14,403
	69.997%	75.522%	19.653%	4.825%	36.045%	39.724%	24.231%
District 38	67,536	43,283	21,717	2,536	32,117	21,637	13,782
	79.455%	64.089%	32.156%	3.755%	47.555%	32.038%	20.407%
District 39	68,308	20,157	46,027	2,124	44,726	9,809	13,773
	79.083%	29.509%	67.382%	3.109%	65.477%	14.360%	20.163%
Grand Total	2,680,375	1,761,117	804,077	115,181	1,354,986	718,190	607,199

Splits

	Total Population	Total White	Total Black	Total Asian	Total American Indian	Total Other	VAP Total	VAP White	VAP Black	VAP Asian	VAP American Indian	VAP Other	Reg Total Jan 2011	Reg White Jan 2011	Reg Black Jan 2011	Reg Other Jan 2011
District 1																
*Jefferson	28,552	17,082	8,773	1,234	523	940	21,067	13,492	5,624	910	379	662	16,764	11,008	4,377	1,379
*Plaquemines	6,149	2,832	2,527	441	262	87	4,604	2,236	1,777	328	200	63	5,002	2,674	1,834	494
St. Bernard	35,897	26,579	6,705	873	522	1,218	26,720	20,490	4,338	640	370	882	23,358	19,332	2,829	1,197
*St. Tammany	49,808	41,202	6,366	912	554	774	37,023	31,138	4,304	616	419	546	29,940	24,860	3,190	1,890
District 1	120,406	87,695	24,371	3,460	1,861	3,019	89,414	67,356	16,043	2,494	1,368	2,153	75,064	57,874	12,230	4,960
	100.000%	72.833%	20.241%	2.874%	1.546%	2.507%	100.000%	75.330%	17.942%	2.789%	1.530%	2.408%	83.951%	77.100%	16.293%	6.608%
District 2																
*Orleans	65,991	3,121	56,544	4,987	164	1,175	47,828	2,724	40,223	3,822	140	919	39,446	1,970	34,247	3,229
*St. Tammany	52,177	37,458	11,815	1,040	518	1,346	39,196	29,448	7,686	734	385	943	29,819	22,490	5,430	1,899
District 2	118,168	40,579	68,359	6,027	682	2,521	87,024	32,172	47,909	4,556	525	1,862	69,265	24,460	39,677	5,128
	100.000%	34.340%	57.849%	5.100%	0.577%	2.133%	100.000%	36.969%	55.053%	5.235%	0.603%	2.140%	79.593%	35.314%	57.283%	7.403%
District 3																
*Jefferson	30,327	15,247	11,544	917	273	2,346	22,860	12,448	7,787	716	188	1,721	15,751	9,206	5,051	1,494
*Orleans	80,726	21,893	55,179	1,540	507	1,607	62,110	19,638	39,536	1,248	405	1,283	48,184	14,070	30,717	3,397
District 3	111,053	37,140	66,723	2,457	780	3,953	84,970	32,086	47,323	1,964	593	3,004	63,935	23,276	35,768	4,891
	100.000%	33.443%	60.082%	2.212%	0.702%	3.560%	100.000%	37.762%	55.694%	2.311%	0.698%	3.535%	75.244%	36.406%	55.944%	7.650%
District 4																
*Orleans	111,267	38,209	67,833	1,894	479	2,852	88,234	32,948	50,955	1,561	393	2,377	66,339	22,737	39,560	4,042
District 4	111,267	38,209	67,833	1,894	479	2,852	88,234	32,948	50,955	1,561	393	2,377	66,339	22,737	39,560	4,042
	100.000%	34.340%	60.964%	1.702%	0.430%	2.563%	100.000%	37.342%	57.750%	1.769%	0.445%	2.694%	75.185%	34.274%	59.633%	6.093%
District 5																
*Jefferson	67,156	21,779	37,629	4,282	393	3,073	49,454	17,390	26,264	3,246	263	2,291	37,584	12,197	21,388	3,999
*Orleans	48,896	20,238	26,142	1,001	341	1,174	41,021	18,657	20,140	900	304	1,020	32,930	12,522	18,031	2,377
District 5	116,052	42,017	63,771	5,283	734	4,247	90,475	36,047	46,404	4,146	567	3,311	70,514	24,719	39,419	6,376
	100.000%	36.205%	54.950%	4.552%	0.632%	3.660%	100.000%	39.842%	51.289%	4.582%	0.627%	3.660%	77.938%	35.055%	55.902%	9.042%
District 6																
*East Baton Rouge	66,471	51,132	11,981	1,775	430	1,153	50,595	40,472	7,723	1,258	314	828	43,173	36,280	5,230	1,663
*Livingston	1,769	1,556	184	5	20	4	1,297	1,152	129	3	11	2	1,151	1,039	81	31
*St. Helena	3,970	1,500	2,410	4	27	29	2,912	1,177	1,692	4	22	17	2,844	1,068	1,736	40
*Tangipahoa	47,822	29,272	16,904	484	275	887	35,931	23,693	11,063	366	212	597	25,711	17,037	7,786	888
District 6	120,032	83,460	31,479	2,268	752	2,073	90,735	66,494	20,607	1,631	559	1,444	72,879	55,424	14,833	2,622
	100.000%	69.531%	26.226%	1.889%	0.626%	1.727%	100.000%	73.284%	22.711%	1.798%	0.616%	1.591%	80.321%	76.049%	20.353%	3.598%
District 7																
*Jefferson	62,735	35,225	21,594	3,371	708	1,837	47,254	28,041	14,998	2,442	503	1,270	38,590	22,288	13,065	3,237
*Orleans	36,949	29,967	4,749	1,529	205	499	31,421	25,713	3,840	1,309	157	402	24,873	19,137	3,093	2,643
*Plaquemines	16,893	13,414	2,424	403	294	358	12,109	9,850	1,590	255	196	218	9,532	7,867	1,241	424

Splits

	Total Population	Total White	Total Black	Total Asian	Total American Indian	Total Other	VAP Total	VAP White	VAP Black	VAP Asian	VAP American Indian	VAP Other	Reg Total Jan 2011	Reg White Jan 2011	Reg Black Jan 2011	Reg Other Jan 2011
District 7	116,577	78,606	28,767	5,303	1,207	2,694	90,784	63,604	20,428	4,006	856	1,890	72,995	49,292	17,399	6,304
	100.000%	67.428%	24.676%	4.549%	1.035%	2.311%	100.000%	70.061%	22.502%	4.413%	0.943%	2.082%	80.405%	67.528%	23.836%	8.636%
District 8																
*Ascension	18,890	5,763	12,632	104	63	328	13,642	4,648	8,653	83	47	211	11,571	3,772	7,524	275
*Assumption	13,537	6,372	6,953	23	61	128	10,123	5,049	4,921	16	37	100	8,807	4,252	4,517	38
*Iberville	17,555	5,482	11,877	56	41	99	13,786	4,772	8,871	40	34	69	9,831	2,911	6,777	143
*Lafourche	15,837	9,515	5,872	141	145	164	11,932	7,712	3,917	104	96	103	8,961	5,811	2,940	210
*St. Charles	1,302	152	1,148	1	1	0	1,044	151	891	1	1	0	563	19	536	8
St. James	22,102	10,615	11,290	43	52	102	16,401	8,231	8,039	26	41	64	14,703	7,249	7,260	194
*St. John the Baptist	21,124	6,747	14,040	81	80	176	15,557	5,468	9,861	48	64	116	13,246	4,142	8,824	280
District 8	110,347	44,646	63,812	449	443	997	82,485	36,031	45,153	318	320	663	67,682	28,156	38,378	1,148
	100.000%	40.460%	57.828%	0.407%	0.401%	0.904%	100.000%	43.682%	54.741%	0.386%	0.388%	0.804%	82.054%	41.600%	56.703%	1.696%
District 9																
*Jefferson	114,028	90,564	12,947	4,421	666	5,430	92,659	75,120	9,391	3,396	511	4,241	68,212	58,441	4,666	5,105
District 9	114,028	90,564	12,947	4,421	666	5,430	92,659	75,120	9,391	3,396	511	4,241	68,212	58,441	4,666	5,105
	100.000%	79.423%	11.354%	3.877%	0.584%	4.762%	100.000%	81.071%	10.135%	3.665%	0.551%	4.577%	73.616%	85.676%	6.840%	7.484%
District 10																
*Jefferson	112,039	87,958	12,964	4,319	729	6,069	88,899	71,383	9,114	3,323	560	4,519	65,957	54,191	4,833	6,933
District 10	112,039	87,958	12,964	4,319	729	6,069	88,899	71,383	9,114	3,323	560	4,519	65,957	54,191	4,833	6,933
	100.000%	78.507%	11.571%	3.855%	0.651%	5.417%	100.000%	80.297%	10.252%	3.738%	0.630%	5.083%	74.193%	82.161%	7.328%	10.511%
District 11																
*St. Tammany	106,651	93,602	8,900	1,687	911	1,551	78,082	69,447	5,832	1,108	632	1,063	67,947	59,905	4,238	3,804
*Tangipahoa	15,019	12,834	1,791	73	135	186	11,234	9,816	1,145	55	96	122	8,750	7,781	683	286
District 11	121,670	106,436	10,691	1,760	1,046	1,737	89,316	79,263	6,977	1,163	728	1,185	76,697	67,686	4,921	4,090
	100.000%	87.479%	8.787%	1.447%	0.860%	1.428%	100.000%	88.744%	7.812%	1.302%	0.815%	1.327%	85.872%	88.251%	6.416%	5.333%
District 12																
*St. Tammany	25,104	23,102	1,368	168	199	267	19,303	17,931	930	112	143	187	15,908	14,596	637	675
*Tangipahoa	49,049	29,412	18,382	300	369	586	36,592	23,043	12,657	226	280	386	28,096	17,959	9,394	743
Washington	47,168	31,482	14,884	145	305	352	35,305	24,363	10,374	101	238	229	25,608	17,973	7,239	396
District 12	121,321	83,996	34,634	613	873	1,205	91,200	65,337	23,961	439	661	802	69,612	50,528	17,270	1,814
	100.000%	69.235%	28.547%	0.505%	0.720%	0.993%	100.000%	71.641%	26.273%	0.481%	0.725%	0.879%	76.329%	72.585%	24.809%	2.606%
District 13																
*East Baton Rouge	6,077	5,405	520	50	53	49	4,489	4,068	316	32	38	35	3,621	3,370	159	92
*Livingston	103,674	95,673	5,149	716	845	1,291	74,658	69,497	3,290	443	616	812	57,728	54,002	2,021	1,705
*Tangipahoa	9,207	8,688	304	98	55	62	6,920	6,579	194	63	43	41	6,107	5,802	126	179
District 13	118,958	109,766	5,973	864	953	1,402	86,067	80,144	3,800	538	697	888	67,456	63,174	2,306	1,976
	100.000%	92.273%	5.021%	0.726%	0.801%	1.179%	100.000%	93.118%	4.415%	0.625%	0.810%	1.032%	78.376%	93.652%	3.419%	2.929%

Splits

	Total Population	Total White	Total Black	Total Asian	Total American Indian	Total Other	VAP Total	VAP White	VAP Black	VAP Asian	VAP American Indian	VAP Other	Reg Total Jan 2011	Reg White Jan 2011	Reg Black Jan 2011	Reg Other Jan 2011
District 14																
*East Baton Rouge	115,785	33,912	75,627	4,112	424	1,710	89,056	29,898	53,956	3,442	356	1,404	59,935	15,455	41,867	2,613
District 14	115,785	33,912	75,627	4,112	424	1,710	89,056	29,898	53,956	3,442	356	1,404	59,935	15,455	41,867	2,613
	100.000%	29.289%	65.317%	3.551%	0.366%	1.477%	100.000%	33.572%	60.587%	3.865%	0.400%	1.577%	67.300%	25.786%	69.854%	4.360%
District 15																
*East Baton Rouge	118,058	25,562	87,054	2,770	420	2,252	85,118	21,570	59,605	2,016	328	1,599	63,920	17,196	44,452	2,272
District 15	118,058	25,562	87,054	2,770	420	2,252	85,118	21,570	59,605	2,016	328	1,599	63,920	17,196	44,452	2,272
	100.000%	21.652%	73.738%	2.346%	0.356%	1.908%	100.000%	25.341%	70.026%	2.368%	0.385%	1.879%	75.096%	26.902%	69.543%	3.554%
District 16																
*East Baton Rouge	118,106	89,139	21,736	4,739	504	1,988	95,832	74,590	15,726	3,649	402	1,465	71,600	59,313	8,545	3,742
District 16	118,106	89,139	21,736	4,739	504	1,988	95,832	74,590	15,726	3,649	402	1,465	71,600	59,313	8,545	3,742
	100.000%	75.474%	18.404%	4.012%	0.427%	1.683%	100.000%	77.834%	16.410%	3.808%	0.419%	1.529%	74.714%	82.839%	11.934%	5.226%
District 17																
*Assumption	9,884	9,263	297	45	129	150	7,542	7,147	178	35	88	94	5,981	5,841	69	71
*East Baton Rouge	15,674	9,777	5,616	118	82	81	11,416	7,277	3,970	74	48	47	10,368	6,537	3,557	274
East Feliciana	20,267	10,783	9,250	67	127	40	16,075	8,775	7,123	58	94	25	13,411	7,629	5,126	656
*Iberville	15,832	10,798	4,743	68	76	147	12,099	8,482	3,387	45	64	121	10,621	7,503	2,977	141
Pointe Coupee	22,802	14,010	8,427	69	71	225	17,327	11,073	6,020	44	57	133	15,464	9,584	5,696	184
*St. Helena	7,233	3,534	3,604	12	45	38	5,528	2,859	2,599	7	38	25	5,588	2,748	2,781	59
*St. Martin	1,443	1,399	10	8	21	5	1,163	1,135	4	6	15	3	993	976	0	17
West Baton Rouge	23,788	14,271	9,132	114	85	186	17,861	11,067	6,517	92	67	118	14,796	9,244	5,408	144
District 17	116,923	73,835	41,079	501	636	872	89,011	57,815	29,798	361	471	566	77,222	50,062	25,614	1,546
	100.000%	63.148%	35.133%	0.428%	0.544%	0.746%	100.000%	64.953%	33.477%	0.406%	0.529%	0.636%	86.756%	64.829%	33.169%	2.002%
District 18																
*Ascension	88,325	72,809	11,834	1,130	523	2,029	62,818	52,689	7,758	733	365	1,273	52,533	44,460	5,732	2,341
*Livingston	22,583	20,372	1,608	185	190	228	16,741	15,206	1,116	119	155	145	12,701	11,467	883	351
District 18	110,908	93,181	13,442	1,315	713	2,257	79,559	67,895	8,874	852	520	1,418	65,234	55,927	6,615	2,692
	100.000%	84.016%	12.120%	1.186%	0.643%	2.035%	100.000%	85.339%	11.154%	1.071%	0.654%	1.782%	81.994%	85.733%	10.140%	4.127%
District 19																
*Jefferson	17,715	4,260	11,548	99	110	1,698	12,962	3,399	8,124	77	85	1,277	9,219	1,796	6,753	670
*Lafourche	17,053	13,077	3,392	79	249	256	12,981	10,282	2,297	58	159	185	9,867	7,963	1,658	246
*St. Charles	51,478	36,388	13,247	574	370	899	37,528	27,294	8,977	356	262	639	31,142	22,894	6,918	1,330
*St. John the Baptist	24,800	12,754	10,904	333	157	652	18,011	9,940	7,266	242	100	463	14,539	8,324	5,441	774
District 19	111,046	66,479	39,091	1,085	886	3,505	81,482	50,915	26,664	733	606	2,564	64,767	40,977	20,770	3,020
	100.000%	59.866%	35.203%	0.977%	0.798%	3.156%	100.000%	62.486%	32.724%	0.900%	0.744%	3.147%	79.486%	63.268%	32.069%	4.663%
District 20																

Splits

	Total Population	Total White	Total Black	Total Asian	Total American Indian	Total Other	VAP Total	VAP White	VAP Black	VAP Asian	VAP American Indian	VAP Other	Reg Total Jan 2011	Reg White Jan 2011	Reg Black Jan 2011	Reg Other Jan 2011
District 20																
*Lafourche	48,130	40,663	2,347	499	2,925	1,696	36,024	31,090	1,542	346	1,836	1,210	25,142	23,435	784	923
*Terrebonne	68,112	45,651	13,862	720	6,090	1,789	50,435	35,467	9,215	534	3,936	1,283	35,813	26,312	6,807	2,694
District 20	116,242	86,314	16,209	1,219	9,015	3,485	86,459	66,557	10,757	880	5,772	2,493	60,955	49,747	7,591	3,617
	100.000%	74.254%	13.944%	1.049%	7.755%	2.998%	100.000%	76.981%	12.442%	1.018%	6.676%	2.883%	70.502%	81.613%	12.453%	5.934%
District 21																
*Iberia	8,289	3,164	4,980	47	26	72	5,852	2,474	3,279	28	21	50	5,436	2,231	3,122	83
*Lafourche	15,298	13,190	1,752	136	138	82	11,715	10,278	1,189	104	96	48	9,741	8,618	934	189
St. Mary	54,650	32,406	18,290	1,058	1,269	1,627	40,746	25,191	12,797	773	837	1,148	31,845	20,072	10,527	1,246
*Terrebonne	43,748	32,940	8,210	613	1,285	700	32,302	25,154	5,432	452	789	475	23,486	19,025	3,461	1,000
District 21	121,985	81,700	33,232	1,854	2,718	2,481	90,615	63,097	22,697	1,357	1,743	1,721	70,508	49,946	18,044	2,518
	100.000%	66.975%	27.243%	1.520%	2.228%	2.034%	100.000%	69.632%	25.048%	1.498%	1.924%	1.899%	77.811%	70.837%	25.591%	3.571%
District 22																
*Iberia	64,951	42,387	19,111	1,879	402	1,172	47,546	32,663	12,475	1,280	286	842	39,703	27,785	10,795	1,123
*Lafayette	3,476	2,383	972	30	23	68	2,569	1,821	658	21	16	53	2,144	1,500	573	71
*St. Landry	7,310	6,924	310	16	33	27	5,380	5,121	217	10	21	11	5,128	4,791	242	95
*St. Martin	46,038	31,417	13,327	458	312	524	33,878	23,976	9,032	304	202	364	30,147	20,979	8,195	973
District 22	121,775	83,111	33,720	2,383	770	1,791	89,373	63,581	22,382	1,615	525	1,270	77,122	55,055	19,805	2,262
	100.000%	68.250%	27.690%	1.957%	0.632%	1.471%	100.000%	71.141%	25.043%	1.807%	0.587%	1.421%	86.292%	71.387%	25.680%	2.933%
District 23																
*Lafayette	120,896	100,058	14,929	3,137	765	2,007	93,891	78,795	10,733	2,362	561	1,440	72,241	63,077	5,836	3,328
District 23	120,896	100,058	14,929	3,137	765	2,007	93,891	78,795	10,733	2,362	561	1,440	72,241	63,077	5,836	3,328
	100.000%	82.764%	12.349%	2.595%	0.633%	1.660%	100.000%	83.922%	11.431%	2.516%	0.598%	1.534%	76.941%	87.315%	8.079%	4.607%
District 24																
*Lafayette	62,458	25,004	35,897	362	324	871	45,579	20,117	24,351	253	236	622	37,853	15,901	20,648	1,304
*St. Landry	54,031	23,374	29,624	265	249	519	39,072	18,107	20,250	175	170	370	37,534	16,691	20,184	659
*St. Martin	4,679	1,497	3,060	12	17	93	3,348	1,209	2,054	6	10	69	2,709	911	1,691	107
District 24	121,168	49,875	68,581	639	590	1,483	87,999	39,433	46,655	434	416	1,061	78,096	33,503	42,523	2,070
	100.000%	41.162%	56.600%	0.527%	0.487%	1.224%	100.000%	44.811%	53.018%	0.493%	0.473%	1.206%	88.746%	42.900%	54.450%	2.651%
District 25																
*Acadia	33,069	26,859	5,678	120	181	231	24,013	19,879	3,768	82	122	162	20,049	16,624	3,191	234
*Calcasieu	48,742	39,988	6,581	1,199	402	572	36,478	30,692	4,290	836	293	367	29,649	25,210	3,356	1,083
Cameron	6,839	6,546	135	10	60	88	5,183	5,011	74	9	38	51	5,536	5,272	188	76
Jefferson Davis	31,594	25,125	5,836	98	275	260	23,196	18,871	3,891	66	180	188	19,337	15,808	3,132	397
District 25	120,244	98,518	18,230	1,427	918	1,151	88,870	74,453	12,023	993	633	768	74,571	62,914	9,867	1,790
	100.000%	81.932%	15.161%	1.187%	0.763%	0.957%	100.000%	83.777%	13.529%	1.117%	0.712%	0.864%	83.910%	84.368%	13.232%	2.400%
District 26																

Splits

	Total Population	Total White	Total Black	Total Asian	Total American Indian	Total Other	VAP Total	VAP White	VAP Black	VAP Asian	VAP American Indian	VAP Other	Reg Total Jan 2011	Reg White Jan 2011	Reg Black Jan 2011	Reg Other Jan 2011
District 26																
*Acadia	22,687	16,659	5,697	48	112	171	16,523	12,586	3,709	32	77	119	13,701	10,382	3,129	190
*Lafayette	34,748	26,261	7,114	362	178	833	25,276	19,833	4,461	248	138	596	18,886	15,154	3,098	634
*St. Landry	5,822	4,776	906	31	38	71	4,338	3,618	642	19	20	39	3,197	2,700	412	85
Vermilion	57,999	46,922	8,654	1,274	376	773	42,522	35,424	5,457	902	259	480	34,753	29,351	4,628	774
District 26	121,256	94,618	22,371	1,715	704	1,848	88,659	71,461	14,269	1,201	494	1,234	70,537	57,587	11,267	1,683
	100.000%	78.032%	18.449%	1.414%	0.581%	1.524%	100.000%	80.602%	16.094%	1.355%	0.557%	1.392%	79.560%	81.641%	15.973%	2.386%
District 27																
*Calcasieu	118,161	73,635	40,862	1,261	899	1,504	88,182	57,239	28,285	943	683	1,032	72,724	46,996	23,361	2,367
District 27	118,161	73,635	40,862	1,261	899	1,504	88,182	57,239	28,285	943	683	1,032	72,724	46,996	23,361	2,367
	100.000%	62.318%	34.582%	1.067%	0.761%	1.273%	100.000%	64.910%	32.076%	1.069%	0.775%	1.170%	82.470%	64.622%	32.123%	3.255%
District 28																
*Acadia	6,017	5,609	270	28	20	90	4,374	4,089	191	17	14	63	3,506	3,340	121	45
Allen	25,764	18,435	6,192	220	749	168	19,870	14,288	4,828	154	495	105	13,110	10,190	2,397	523
*Avoyelles	31,862	19,276	11,772	140	512	162	24,120	15,087	8,476	101	342	114	17,187	11,642	5,192	353
Evangeline	33,984	23,439	9,862	139	161	383	24,817	17,619	6,661	97	117	323	21,407	15,267	5,973	167
*St. Landry	16,221	11,541	4,313	83	86	198	11,914	8,747	2,888	62	67	150	10,690	7,719	2,753	218
District 28	113,848	78,300	32,409	610	1,528	1,001	85,095	59,830	23,044	431	1,035	755	65,900	48,158	16,436	1,306
	100.000%	68.776%	28.467%	0.536%	1.342%	0.879%	100.000%	70.310%	27.080%	0.506%	1.216%	0.887%	77.443%	73.077%	24.941%	1.982%
District 29																
*Natchitoches	1,709	1,577	69	2	51	10	1,285	1,188	56	2	30	9	1,005	956	20	29
*Rapides	84,718	66,711	14,045	1,485	1,289	1,188	64,019	51,437	9,784	1,053	970	775	50,296	42,505	5,909	1,882
Sabine	24,233	17,155	4,234	84	2,636	124	18,311	13,544	2,835	63	1,796	73	13,837	10,811	2,032	994
*Vernon	1,379	1,295	14	12	54	4	1,053	990	6	8	45	4	819	791	4	24
District 29	112,039	86,738	18,362	1,583	4,030	1,326	84,668	67,159	12,681	1,126	2,841	861	65,957	55,063	7,965	2,929
	100.000%	77.418%	16.389%	1.413%	3.597%	1.184%	100.000%	79.320%	14.977%	1.330%	3.355%	1.017%	77.901%	83.483%	12.076%	4.441%
District 30																
Beauregard	35,654	29,321	5,016	353	652	312	26,359	21,902	3,569	239	460	189	19,924	16,703	2,304	917
*Calcasieu	25,865	22,891	2,382	90	325	177	19,096	17,146	1,564	67	211	108	15,471	13,815	1,258	398
*Vernon	50,955	38,319	8,299	1,414	1,123	1,800	36,769	28,426	5,343	1,018	803	1,179	20,801	17,090	2,491	1,220
District 30	112,474	90,531	15,697	1,857	2,100	2,289	82,224	67,474	10,476	1,324	1,474	1,476	56,196	47,608	6,053	2,535
	100.000%	80.491%	13.956%	1.651%	1.867%	2.035%	100.000%	82.061%	12.741%	1.610%	1.793%	1.795%	68.345%	84.718%	10.771%	4.511%
District 31																
Bienville	14,353	7,935	6,153	44	132	89	11,012	6,279	4,544	31	105	53	9,256	5,112	4,085	59
*Grant	1,509	764	724	2	9	10	1,176	625	541	2	3	5	976	490	471	15
*Lincoln	23,439	6,954	15,612	414	93	366	18,767	5,961	12,053	388	81	284	10,456	3,061	6,967	428
*Natchitoches	21,246	8,713	11,776	106	384	267	15,778	7,064	8,133	82	292	207	12,348	5,432	6,389	527

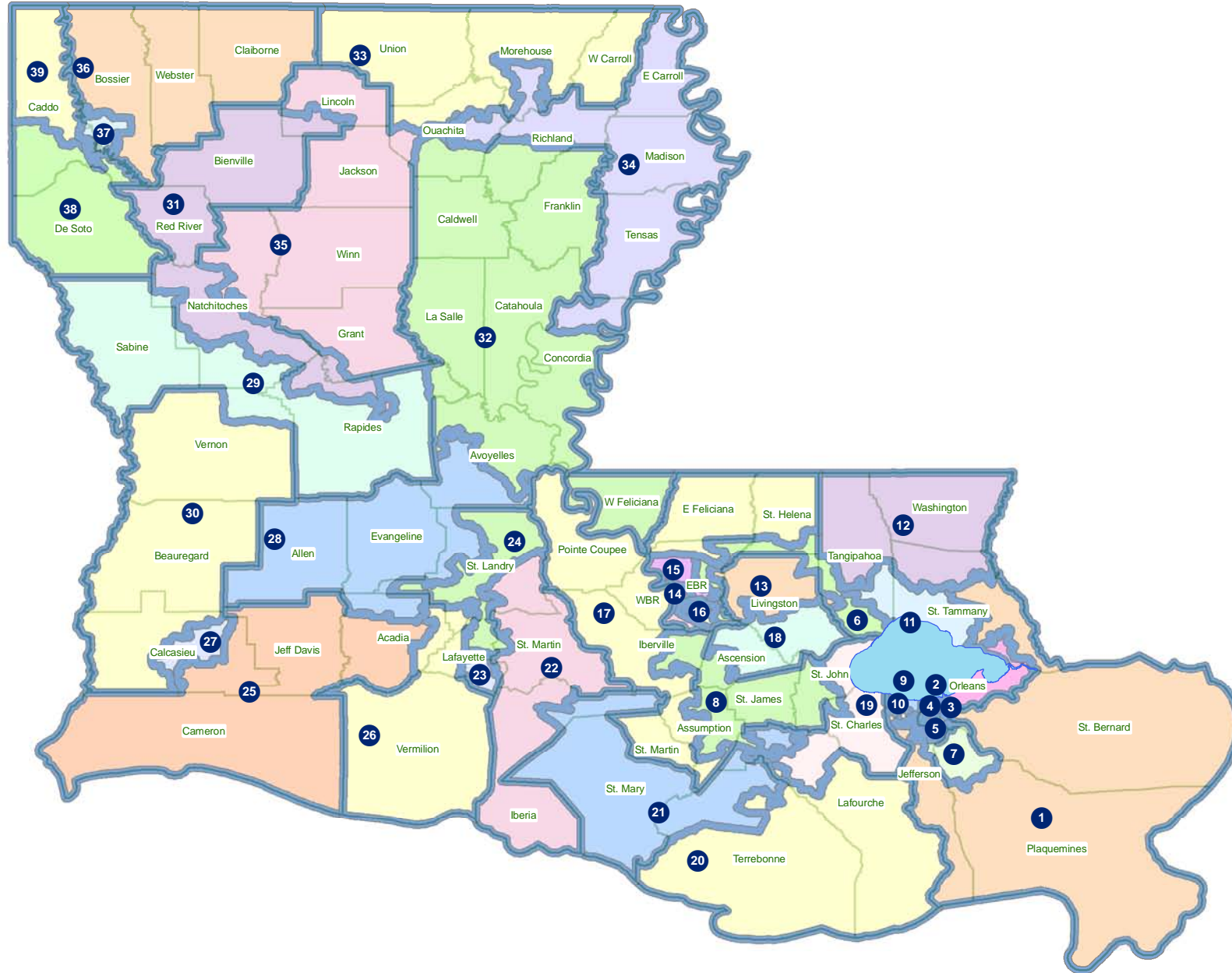
Splits

	Total Population	Total White	Total Black	Total Asian	Total American Indian	Total Other	VAP Total	VAP White	VAP Black	VAP Asian	VAP American Indian	VAP Other	Reg Total Jan 2011	Reg White Jan 2011	Reg Black Jan 2011	Reg Other Jan 2011
District 31																
*Rapides	41,518	11,366	29,096	419	337	300	29,677	9,294	19,579	316	262	226	24,359	7,479	16,193	687
Red River	9,091	5,360	3,633	16	43	39	6,778	4,256	2,450	12	34	26	5,981	3,566	2,377	38
District 31	111,156	41,092	66,994	1,001	998	1,071	83,188	33,479	47,300	831	777	801	63,376	25,140	36,482	1,754
	100.000%	36.968%	60.270%	0.901%	0.898%	0.964%	100.000%	40.245%	56.859%	0.999%	0.934%	0.963%	76.184%	39.668%	57.564%	2.768%
District 32																
*Avoyelles	10,211	8,912	1,104	34	129	32	7,670	6,763	771	25	89	22	5,918	5,232	598	88
Caldwell	10,132	8,213	1,778	30	64	47	7,758	6,314	1,336	23	51	34	6,324	5,351	911	62
Catahoula	10,407	6,985	3,318	9	53	42	8,057	5,543	2,438	8	43	25	6,380	4,749	1,596	35
*Concordia	13,657	9,767	3,704	39	88	59	10,431	7,417	2,884	25	69	36	8,220	6,290	1,818	111
Franklin	20,767	13,930	6,620	65	82	70	15,450	10,838	4,471	42	63	36	13,466	9,408	3,978	80
La Salle	14,890	12,689	1,808	40	215	138	11,366	9,677	1,402	35	143	109	8,427	7,648	621	158
*Ouachita	9,653	8,856	661	23	64	49	7,143	6,621	438	11	47	26	6,259	5,683	385	191
*Rapides	5,377	5,296	9	8	56	8	3,903	3,848	5	8	38	4	3,401	3,344	5	52
*Richland	5,290	3,956	1,278	19	18	19	4,068	3,026	1,005	11	16	10	3,000	2,387	586	27
West Feliciana	15,625	8,125	7,317	42	35	106	12,907	6,412	6,364	24	33	74	6,796	4,448	2,254	94
District 32	116,009	86,729	27,597	309	804	570	88,753	66,459	21,114	212	592	376	68,191	54,540	12,752	898
	100.000%	74.761%	23.789%	0.266%	0.693%	0.491%	100.000%	74.881%	23.790%	0.239%	0.667%	0.424%	76.832%	79.981%	18.700%	1.317%
District 33																
*Morehouse	17,073	11,793	5,035	103	66	76	13,055	9,472	3,415	69	52	47	11,408	8,274	2,950	184
*Ouachita	64,087	55,294	7,034	989	314	456	48,032	42,131	4,687	669	242	303	41,790	37,254	3,091	1,445
*Union	22,259	15,507	5,963	49	115	625	17,154	12,422	4,251	31	91	359	14,811	10,767	3,654	390
West Carroll	11,604	9,497	1,870	34	86	117	8,746	7,254	1,330	24	62	76	7,167	6,017	1,096	54
District 33	115,023	92,091	19,902	1,175	581	1,274	86,987	71,279	13,683	793	447	785	75,176	62,312	10,791	2,073
	100.000%	80.063%	17.303%	1.022%	0.505%	1.108%	100.000%	81.942%	15.730%	0.912%	0.514%	0.902%	86.422%	82.888%	14.354%	2.758%
District 34																
*Concordia	7,165	2,192	4,900	20	35	18	5,158	1,881	3,233	16	19	9	4,476	1,707	2,711	59
East Carroll	7,759	2,245	5,398	47	31	38	5,766	1,845	3,830	37	25	29	5,330	1,617	3,664	49
Madison	12,093	4,498	7,452	33	55	55	9,071	3,644	5,312	20	45	50	7,634	2,780	4,764	90
*Morehouse	10,906	2,552	8,246	39	36	33	8,006	2,111	5,815	33	27	20	7,273	1,774	5,379	120
*Ouachita	59,941	12,930	45,869	558	177	407	42,774	11,094	30,800	456	136	288	34,450	7,235	25,811	1,404
*Richland	15,435	8,923	6,266	73	78	95	11,372	6,973	4,232	54	54	59	9,939	5,786	4,060	93
Tensas	5,252	2,202	2,991	13	15	31	3,923	1,796	2,085	11	9	22	4,131	1,807	2,304	20
District 34	118,551	35,542	81,122	783	427	677	86,070	29,344	55,307	627	315	477	73,233	22,706	48,693	1,835
	100.000%	29.980%	68.428%	0.660%	0.360%	0.571%	100.000%	34.093%	64.258%	0.728%	0.366%	0.554%	85.085%	31.005%	66.491%	2.506%
District 35																
*Grant	20,800	17,385	2,878	95	376	66	15,982	13,163	2,437	65	271	46	10,924	9,871	813	240

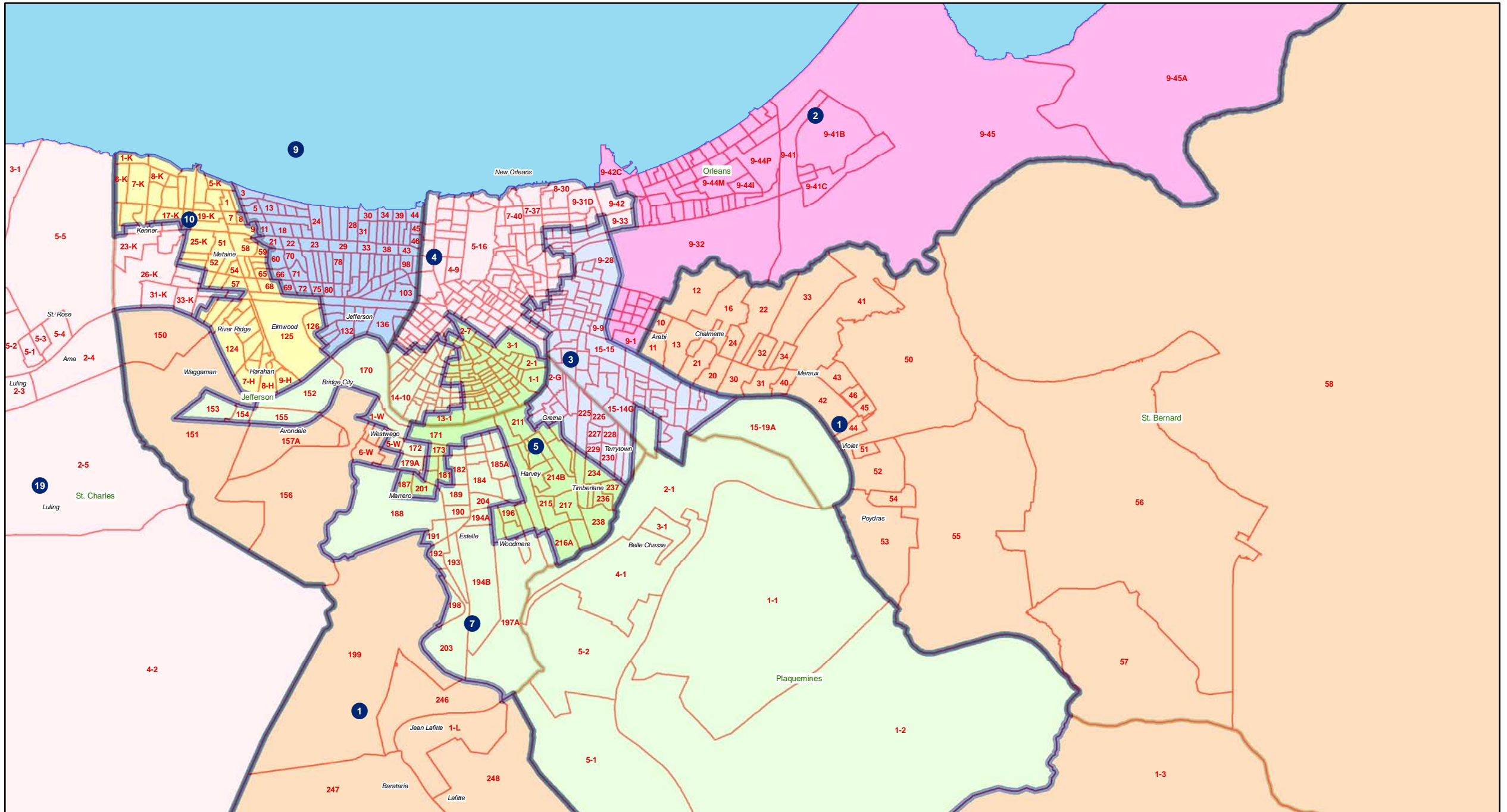
Splits

	Total Population	Total White	Total Black	Total Asian	Total American Indian	Total Other	VAP Total	VAP White	VAP Black	VAP Asian	VAP American Indian	VAP Other	Reg Total Jan 2011	Reg White Jan 2011	Reg Black Jan 2011	Reg Other Jan 2011
District 35																
Jackson	16,274	11,084	4,947	67	83	93	12,570	8,681	3,724	39	65	61	9,846	6,879	2,805	162
*Lincoln	23,296	18,821	3,572	460	137	306	18,363	14,914	2,768	361	102	218	13,560	11,543	1,552	465
*Natchitoches	16,611	11,204	4,933	89	214	171	12,903	8,974	3,582	67	155	125	9,629	6,793	2,469	367
*Ouachita	20,039	15,804	3,630	152	150	303	15,398	12,470	2,480	112	124	212	11,909	9,773	1,710	426
Winn	15,313	10,223	4,777	53	167	93	11,871	8,018	3,619	44	129	61	8,892	6,410	2,406	76
District 35	112,333	84,521	24,737	916	1,127	1,032	87,087	66,220	18,610	688	846	723	64,760	51,269	11,755	1,736
	100.000%	75.241%	22.021%	0.815%	1.003%	0.919%	100.000%	76.039%	21.369%	0.790%	0.971%	0.830%	74.362%	79.168%	18.152%	2.681%
District 36																
*Bossier	58,064	46,651	9,252	806	578	777	42,974	34,811	6,712	551	425	475	33,320	27,159	4,964	1,197
Claiborne	17,195	8,167	8,820	62	99	47	13,815	6,781	6,889	37	80	28	8,877	4,908	3,872	97
*Union	462	175	279	0	0	8	339	146	188	0	0	5	153	96	55	2
Webster	41,207	26,469	14,044	180	316	198	31,497	20,907	10,110	120	241	119	23,913	16,115	7,416	382
District 36	116,928	81,462	32,395	1,048	993	1,030	88,625	62,645	23,899	708	746	627	66,263	48,278	16,307	1,678
	100.000%	69.669%	27.705%	0.896%	0.849%	0.881%	100.000%	70.685%	26.966%	0.799%	0.842%	0.707%	74.768%	72.858%	24.610%	2.532%
District 37																
*Bossier	58,915	37,779	16,354	1,710	561	2,511	43,971	29,881	10,701	1,285	412	1,692	27,514	19,504	6,527	1,483
*Caddo	51,855	38,321	10,961	1,286	438	849	40,947	31,319	7,731	951	344	602	31,926	25,386	5,155	1,385
District 37	110,770	76,100	27,315	2,996	999	3,360	84,918	61,200	18,432	2,236	756	2,294	59,440	44,890	11,682	2,868
	100.000%	68.701%	24.659%	2.705%	0.902%	3.033%	100.000%	72.070%	21.706%	2.633%	0.890%	2.701%	69.997%	75.522%	19.653%	4.825%
District 38																
*Caddo	85,150	52,471	29,425	1,450	798	1,006	64,993	41,937	20,730	1,029	605	692	51,140	33,620	15,526	1,994
De Soto	26,656	15,456	10,600	54	331	215	20,006	12,055	7,495	42	273	141	16,396	9,663	6,191	542
District 38	111,806	67,927	40,025	1,504	1,129	1,221	84,999	53,992	28,225	1,071	878	833	67,536	43,283	21,717	2,536
	100.000%	60.754%	35.799%	1.345%	1.010%	1.092%	100.000%	63.521%	33.206%	1.260%	1.033%	0.980%	79.455%	64.089%	32.156%	3.755%
District 39																
*Caddo	117,964	34,150	81,843	494	670	807	86,375	27,492	57,441	383	506	553	68,308	20,157	46,027	2,124
District 39	117,964	34,150	81,843	494	670	807	86,375	27,492	57,441	383	506	553	68,308	20,157	46,027	2,124
	100.000%	28.950%	69.380%	0.419%	0.568%	0.684%	100.000%	31.829%	66.502%	0.443%	0.586%	0.640%	79.083%	29.509%	67.382%	3.109%

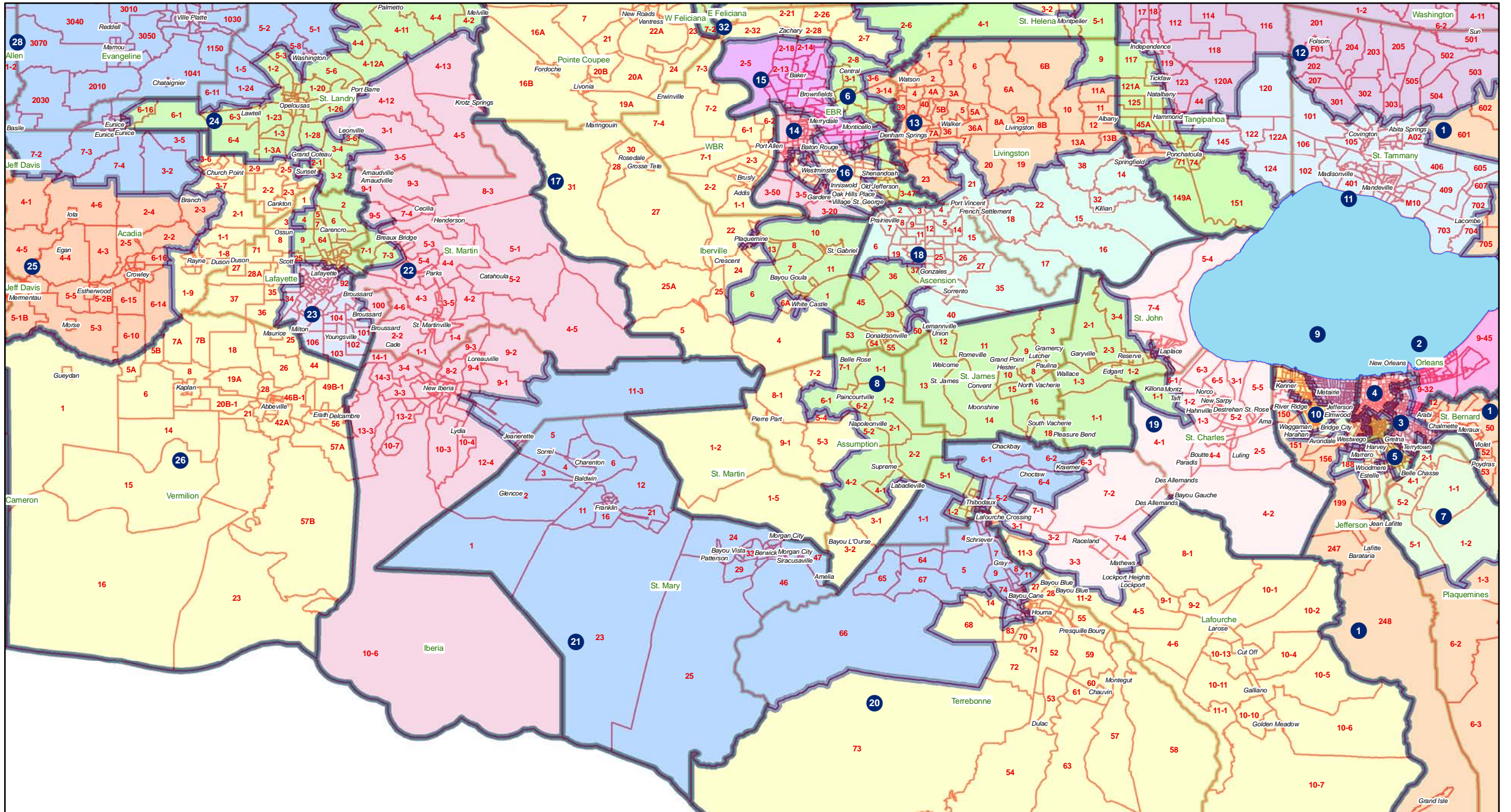
Senate - Statewide



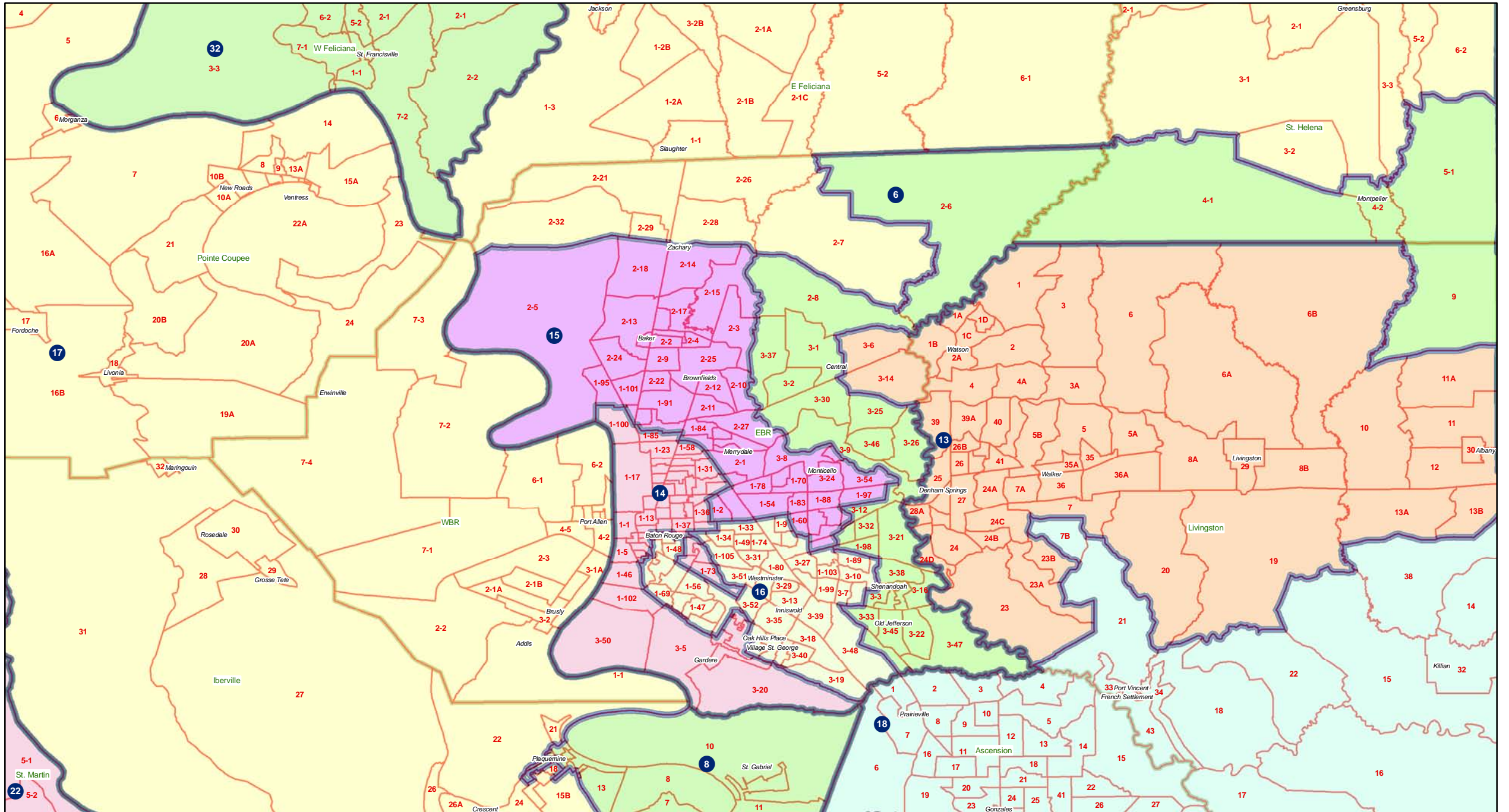
Senate - Jefferson - Orleans



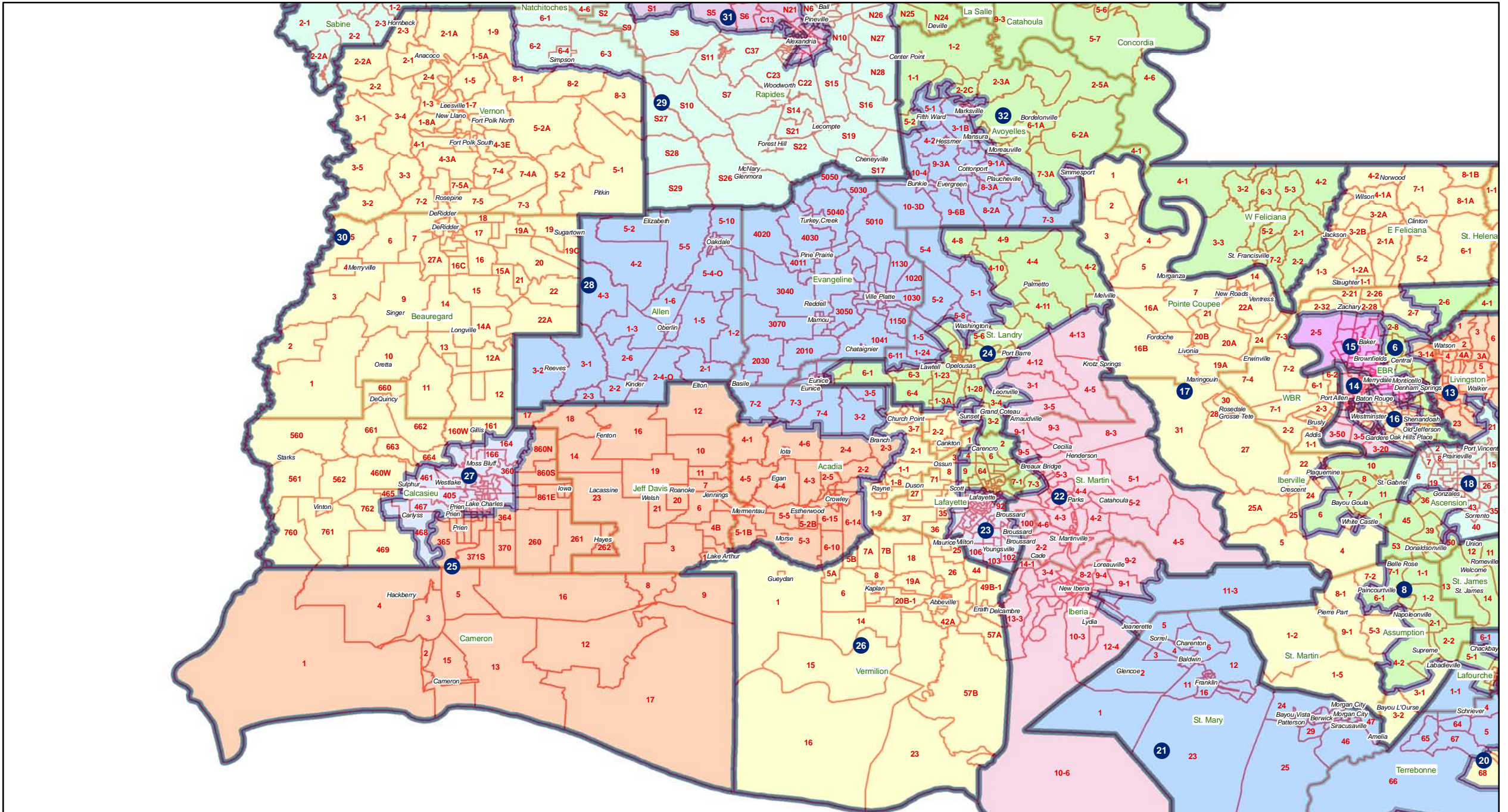
Senate - Acadiana - Bayou - River



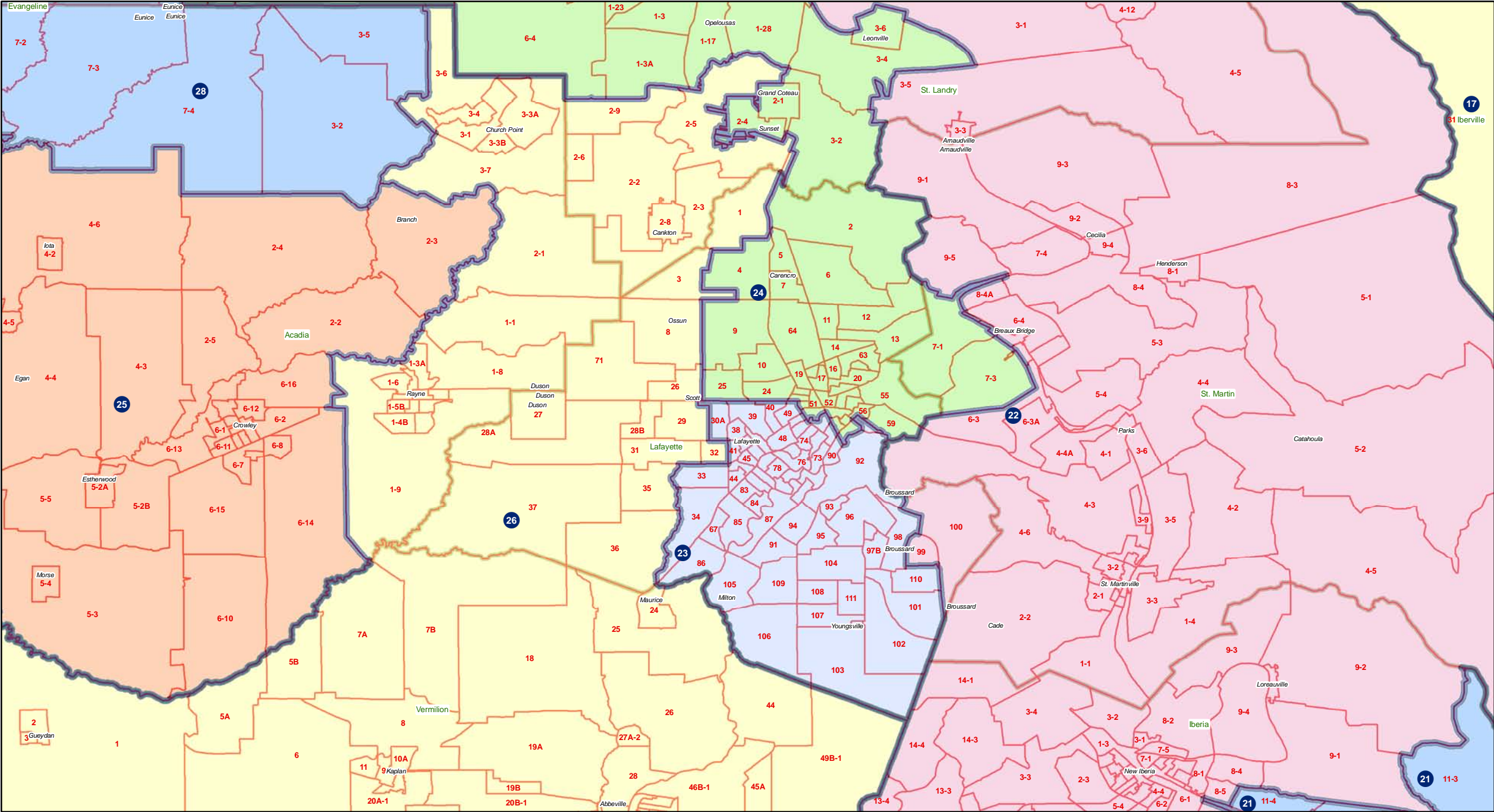
Senate - Baton Rouge



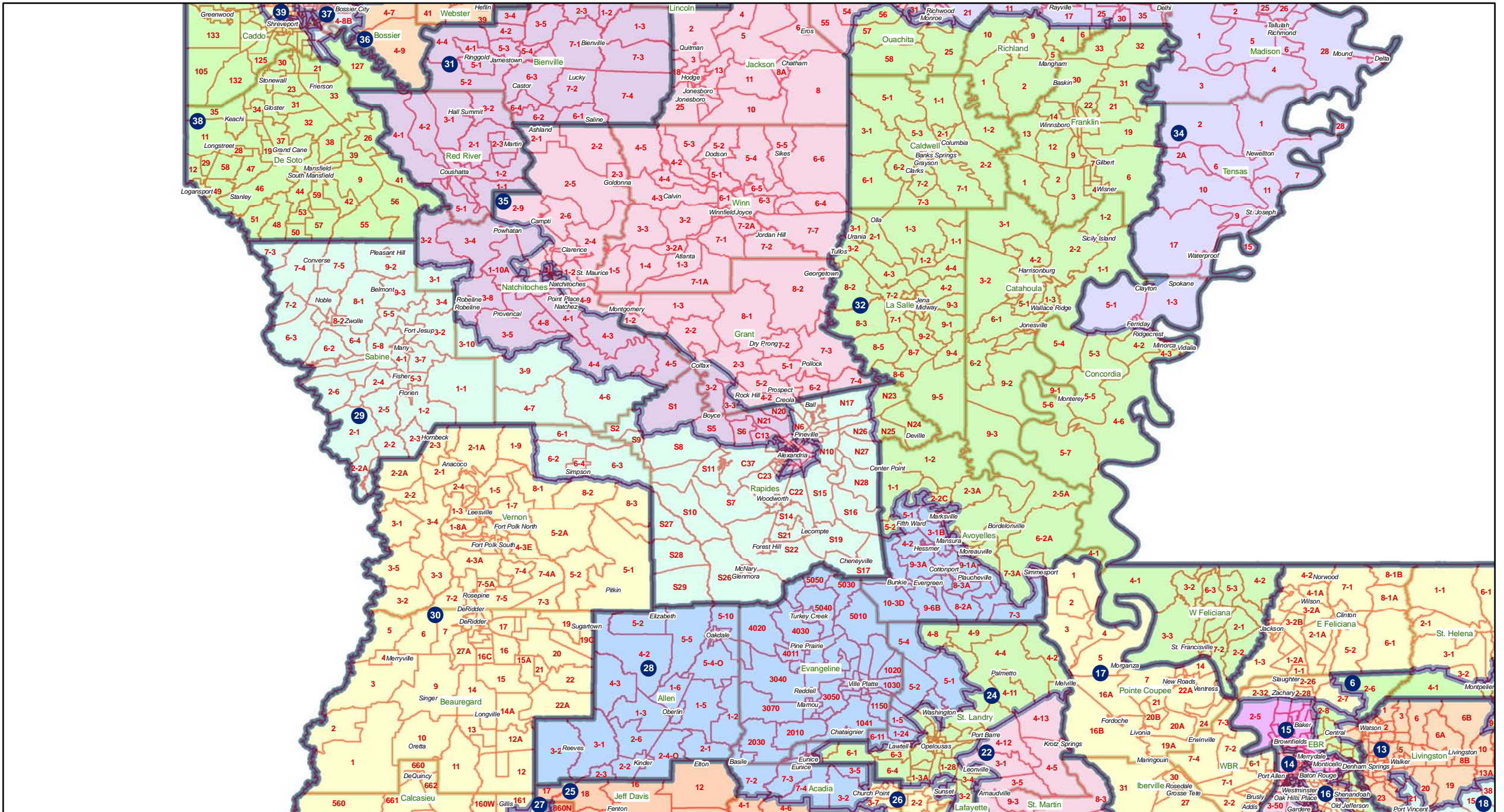
Senate - Southwest



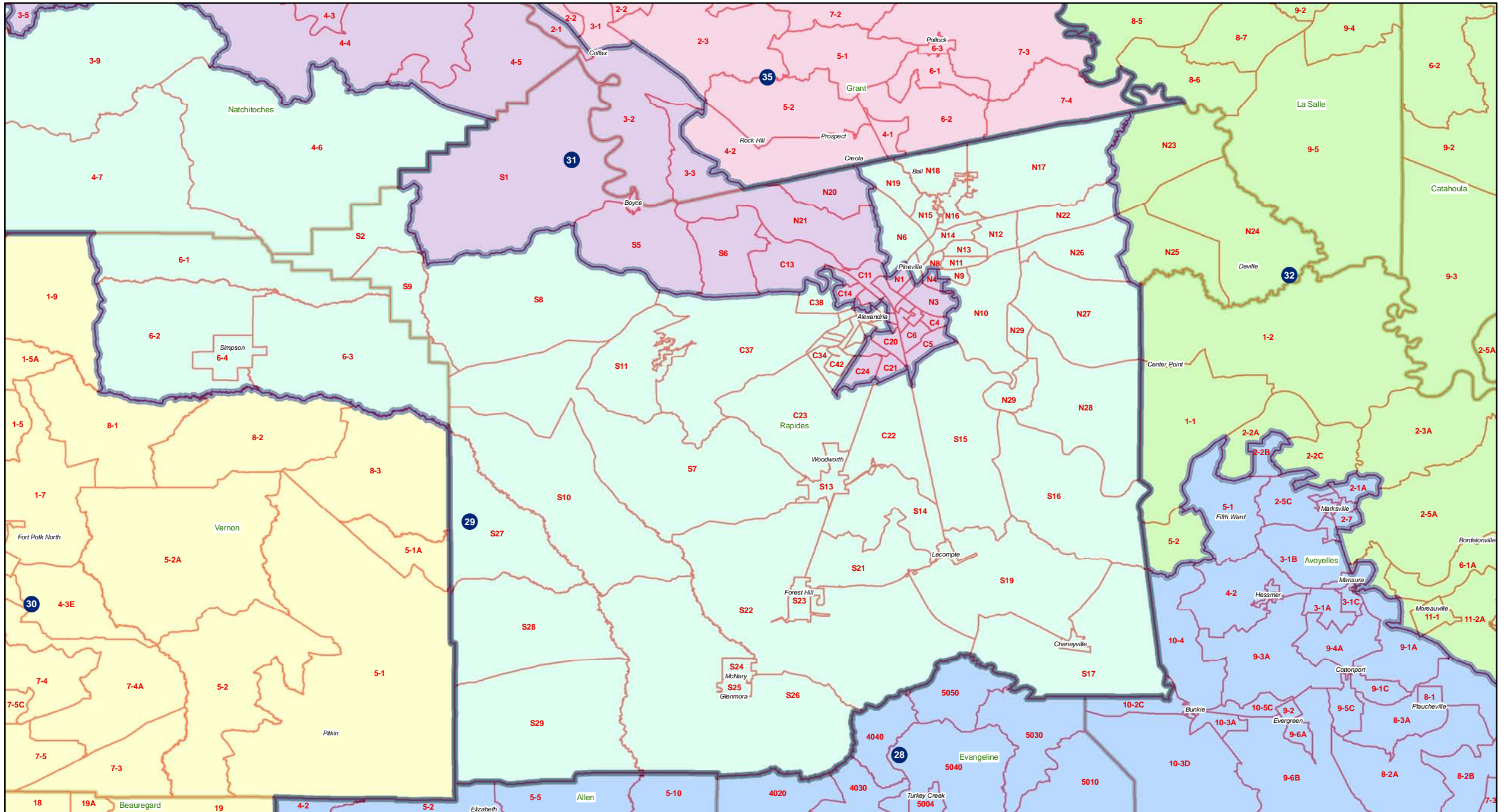
Senate - Lafayette



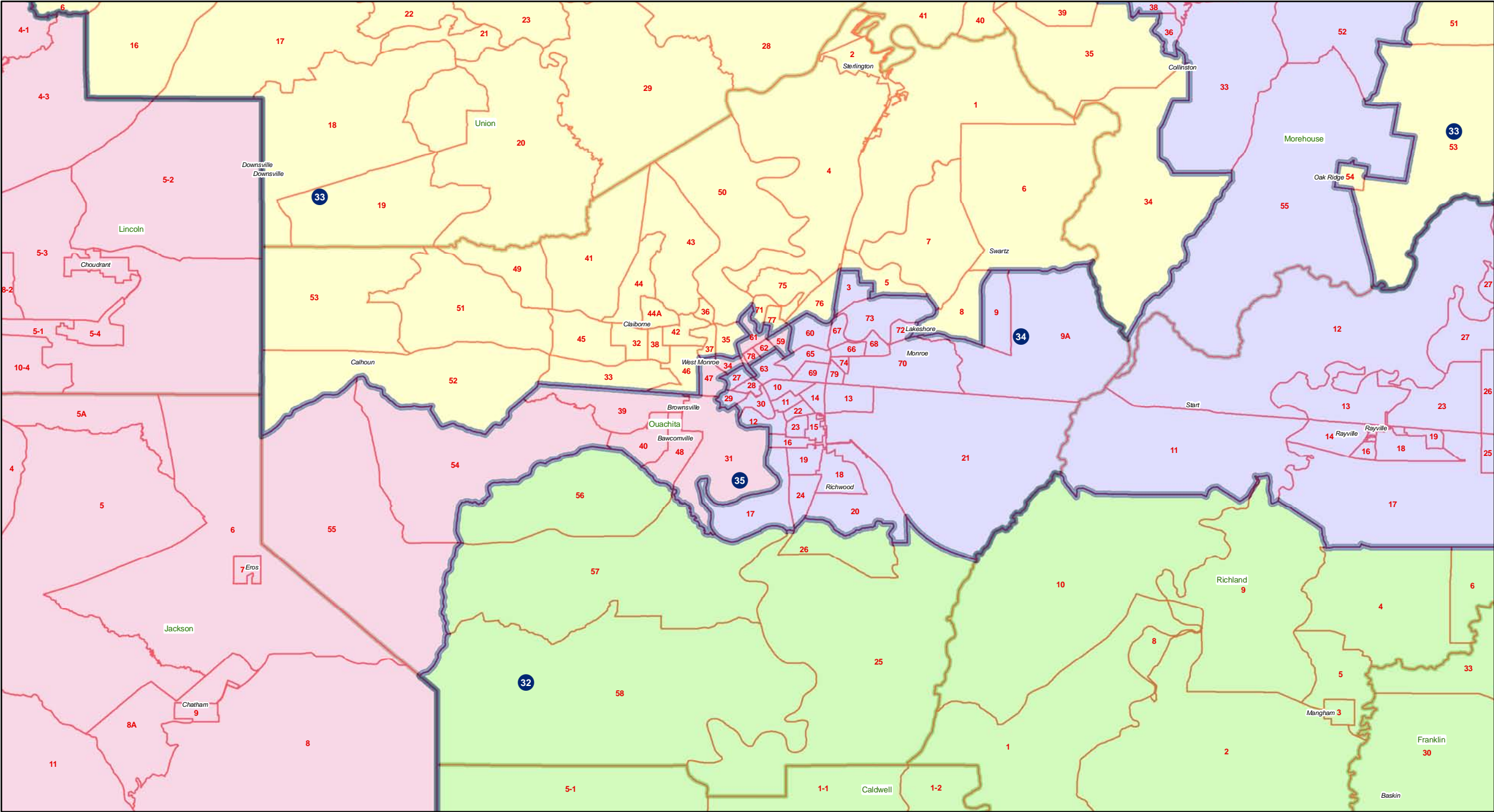
Senate - Central



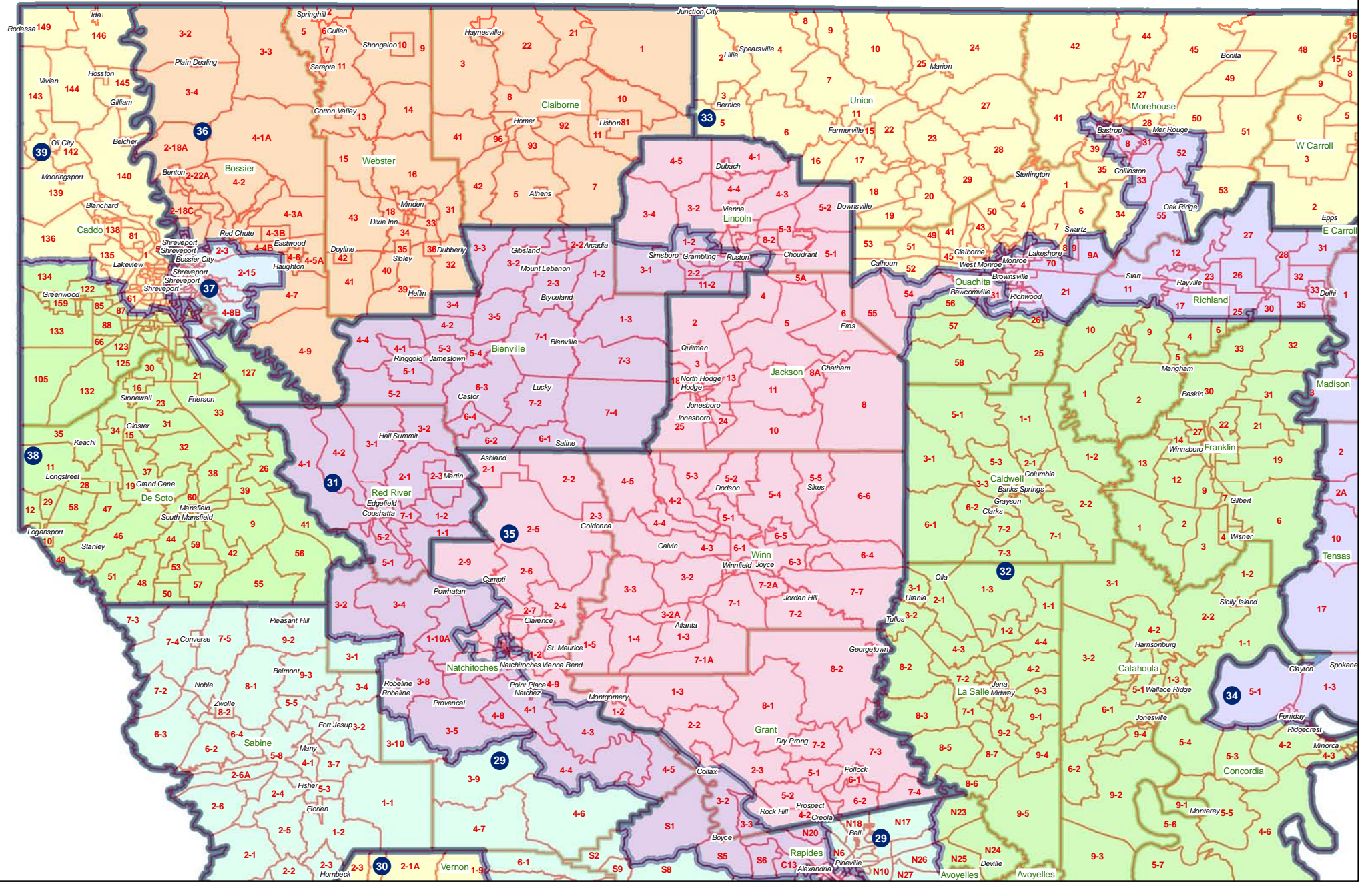
Senate - Rapides



Senate - Ouachita



Senate - Northwest



Senate - Shreveport

